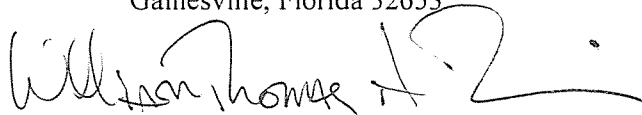


# **FISCAL YEARS 2012/2013 - 2016/2017**

## **LIST OF PRIORITY PROJECTS**

### **ENDORSEMENT**

This List of Priority Projects has been developed  
consistent with federal and state requirements and  
approved on May 2, 2011 by the  
Metropolitan Transportation Planning Organization (MTPO)  
For the Gainesville Urbanized Area  
2009 NW 67 Place  
Gainesville, Florida 32653

  
W. Thomas Hawkins, Chair

The preparation of this report has been financed in part through grants from the Federal Highway Administration and Federal Transit Administration, U.S. Department of Transportation, under the State Planning and Research Program, Section 505 [or Metropolitan Planning Program, Section 104(f)] of Title 23, U.S. Code. The contents of this report do not necessarily reflect the official views or policy of the U.S. Department of Transportation.

May 2, 2011



## TABLE OF CONTENTS

<u>Section</u>	<u>Page</u>
<b>I</b>	<b>INTRODUCTION ..... 1</b>
	Purpose of this Report.....1
	Methodology Used for Setting Priorities .....1
	Development .....1
	Transportation System Modifications Selected from the Gainesville Metropolitan Area 2035 Transportation Plan- The Livable Community Reinvestment Plan .....3
	Relationship to the Management Systems .....3
	MTPO Urban Design Policies.....3
	Public Involvement and Service Equity .....3
	Freight Shippers .....3
	Public Transportation Users.....4
	Safety and Security in the Transportation Planning Process.....4
<b>II</b>	<b>PROJECT PRIORITIES .....5</b>
<b>APPENDIX A</b>	<b>TRANSPORTATION PLANS AND PROGRAMS - EIGHT METROPOLITAN PLANNING AREAS TO BE CONSIDERED ..... A-1</b>
<b>APPENDIX B</b>	<b>ROADS OPERATING AT AN UNACCEPTABLE HIGHWAY LEVEL OF SERVICE .....B-1</b>
	Roads Operating at an Unacceptable Highway Level of Service .....B-3
<b>APPENDIX C</b>	<b>METROPOLITAN TRANSPORTATION PLANNING ORGANIZATION FOR THE GAINESVILLE METROPOLITAN AREA ADOPTED YEAR 2025 LIVABLE COMMUNITY REINVESTMENT COST FEASIBLE PLAN.....C-1</b>
<b>APPENDIX D</b>	<b>REGIONAL TRANSIT SYSTEM SUPPLEMENTAL INFORMATION ..... D-1</b>
	Fiscal Years 2012/2013 - 2016/2017 Public Transportation Priorities Supplemental Information Priority 6 and 7 Projects ..... D-3
<b>APPENDIX E</b>	<b>SAFETY PROJECT SUPPLEMENTAL MATERIAL ..... E-1</b>

**TABLE OF CONTENTS (Continued)**

<u>Section</u>	<u>Page</u>
<b>APPENDIX F    FEDERAL FUNDS OBLIGATION PROJECT LIST FISCAL YEAR 2009 [10/01/2008 - 09/30/2009].....</b>	<b>F-1</b>
<b>APPENDIX G    SUPPLEMENTAL SURFACE TRANSPORTATION PROGRAM (STP) FUND-ELIGIBLE PROJECTS.....</b>	<b>G-1</b>
Alachua County and City of Gainesville Nonprioritized Surface Transportation Program (STP) Fund-Eligible Projects.....	G-3

## LIST OF TABLES

<b><u>Table</u></b>	<b><u>Page</u></b>
1A Bicycle/Pedestrian Priorities- Enhancement Fund.....	9
1B Bicycle/Pedestrian Priorities- Alachua County-Maintained Facilities.....	10
1C Bicycle/Pedestrian Priorities- City of Gainesville-Maintained Facilities.....	11
2A Capacity/Multimodal Priorities- State Highway System .....	13
2B Capacity/Multimodal Priorities- Alachua County-Maintained Facilities.....	14
2C Capacity/Multimodal Priorities- City of Gainesville-Maintained Facilities .....	15
3 Intelligent Transportation System Priorities .....	17
4 Landscaping Priorities.....	21
5A Project, Development and Environment (PD&E) Study Priorities- State Highway System .....	23
5B Project, Development and Environment (PD&E) Study Priorities- Alachua County-Maintained Facilities .....	24
5C Project, Development and Environment (PD&E) Study Priorities- City of Gainesville-Maintained Facilities .....	25
6 Public Transportation Priorities .....	27
7A Right-Of-Way Priorities- State Highway System .....	31
7B Right-Of-Way Priorities- Alachua County-Maintained Facilities.....	32
7C Right-Of-Way Priorities- City of Gainesville-Maintained Facilities .....	33
8 Safe Routes To School Priorities .....	35
9 Safety Priorities.....	37
10 Strategic Intermodal System Priorities .....	39
11 Surface Transportation Program (STP) Fund Priorities.....	41
12A Traffic Operations Priorities- State Highway System.....	43
12B Traffic Operations Priorities- Local Facilities.....	44
13 Transit Corridor Development Priorities .....	33
14 Transportation Disadvantaged Priorities- Transportation Disadvantaged Trust Fund.....	34

## LIST OF TABLES (Continued)

<b><u>Table</u></b>		<b><u>Page</u></b>
15	Transportation Disadvantaged Priorities- Federal Transit Administration Section 5310- Capital Funding/Equipment Program .....	49
16	Transportation Disadvantaged Priorities- Federal Transit Administration Section 5311- Nonurbanized Area Formula Program .....	50
17	Transportation Disadvantaged Priorities- Federal Transit Administration Section 5316- Job Access and Reverse Commute .....	51
18	Transportation Disadvantaged Priorities- Federal Transit Administration Section 5317- New Freedom Program .....	52
19	Transportation Regional Incentive Program (TRIP) Priorities .....	55

## LIST OF ILLUSTRATIONS

<b><u>Illustration</u></b>	<b><u>Page</u></b>
I MTPO Calendar.....	2
II Fiscal Years 2012/2013 - 2016/2017 Enhancement Priorities .....	8
III Fiscal Years 2012/2013 - 2016/2017 Capacity/Multimodal Priorities.....	12
IV Fiscal Years 2012/2013 - 2016/2017 Intelligent Transportation System (ITS) Priorities .....	16
V Fiscal Years 2012/2013 - 2016/2017 Landscaping Priorities .....	20
VI Fiscal Years 2012/2013 - 2016/2017 Project, Development and Environment (PD&E) Study Priorities .....	22
VII Fiscal Years 2012/2013 - 2016/2017 Public Transportation Priorities .....	26
VIII Fiscal Years 2012/2013 - 2016/2017 Right-Of-Way Priorities.....	30
IX Fiscal Years 2012/2013 - 2016/2017 Safe Routes To School Priorities.....	34
X Fiscal Years 2012/2013 - 2016/2017 Safety Priorities.....	36
XI Fiscal Years 2012/2013 - 2016/2017 Strategic Intermodal System Priorities .....	38
XII Fiscal Years 2012/2013 - 2016/2017 Surface Transportation Program (STP) Fund Priorities .....	40
XIII Fiscal Years 2012/2013 - 2016/2017 Traffic Operations Priorities .....	42
XIV Fiscal Years 2012/2013 - 2016/2017 Transit Corridor Development Priorities.....	46
XV Fiscal Years 2012/2013 - 2016/2017 Transportation Regional Incentive Program (TRIP) Priorities.....	54
XVI MTPO Year 2035 Cost Feasible Livable Community Reinvestment Plan Priority Ranking of Projects.....	C-10

(page left blank intentionally)

# **I**

## **INTRODUCTION**

Each Spring, the Metropolitan Transportation Planning Organization (MTPO) for the Gainesville Urbanized Area approves a five-year program for transportation system modification projects to be funded with federal, state and local funds. This five-year program is referred to as the "Transportation Improvement Program (TIP)."

The process that is used to develop the TIP is described in Illustration I. As show in this illustration, the TIP has the following three phases:

- Spring- MTPO approves priority lists for projects it wants Florida Department of Transportation (FDOT) to fund;
- Late Fall- FDOT reports to the MTPO what projects it proposes to fund; and
- Spring- MTPO decides which federally-funded projects to approve.

## **PURPOSE**

This report develops a list of needed, but unfunded, transportation projects. The projects listed later in this report are determined by the MTPO to be necessary to effectively implement the adopted long range transportation plan. Projects selected for funding will be incorporated into the MTPO's Fiscal Years 2012/2013 - 2016/2017 TIP.

## **METHODOLOGY**

The following methodology has been used to establish the priorities contained in this report:

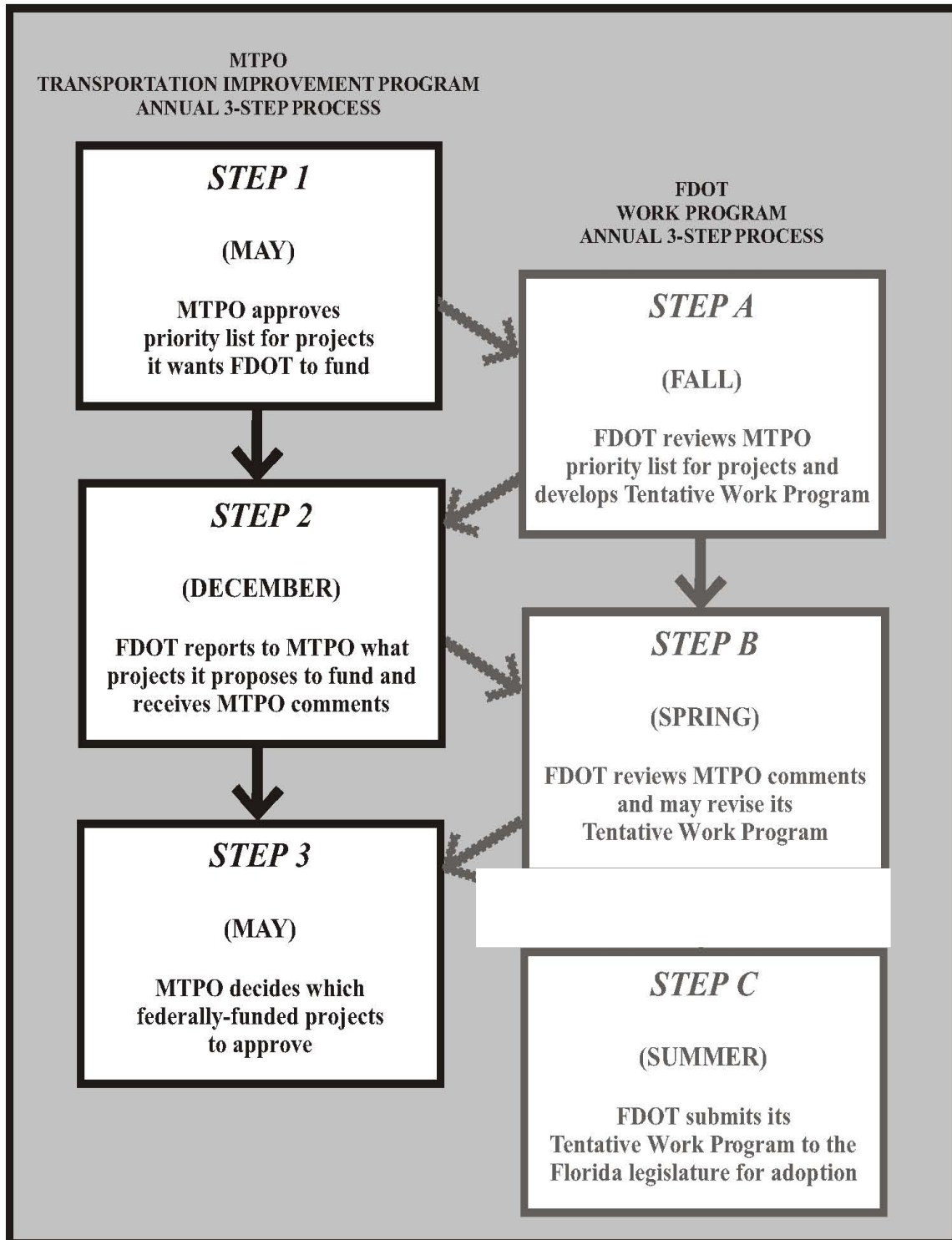
- March- draft report distributed to the MTPO Advisory Committees that identifies transportation priorities submitted last year and, of those, which ones were funded;
- April- MTPO Advisory Committees develop recommended transportation priorities for the coming year; and
- May- MTPO approves transportation priorities for the coming year and submits a "List of Priority Projects" to FDOT.

## **DEVELOPMENT**

Section 134 (f) of title 23, United States Code states that, in developing transportation programs, metropolitan planning organizations shall consider the eight contained in Appendix A. These areas have been considered in the development of the project priorities contained in this report.

## ILLUSTRATION I

### MTPO CALENDAR



## **TRANSPORTATION SYSTEM MODIFICATIONS SELECTED FROM THE GAINESVILLE METROPOLITAN AREA 2035 TRANSPORTATION PLAN- THE LIVABLE COMMUNITY REINVESTMENT PLAN**

The transportation system modifications that have been identified as priorities from the adopted Livable Community Reinvestment Plan are listed in the Public Transportation Priorities, Surface Transportation Program Fund Priorities and Traffic Operations Priorities project tables.

### **RELATIONSHIP TO THE MANAGEMENT SYSTEMS**

The transportation priorities contained in this report are developed from available information from the management systems required for the Gainesville Metropolitan Area as a result of the Safe, Accountable, Flexible, Efficient Transportation Equity Act: A Legacy for Users (SAFETEA-LU). The congestion management system (CMS) for the Gainesville Metropolitan Area was fully operational by October 1, 1997.

### **MTPO URBAN DESIGN POLICIES**

The MTPO has, over the years, adopted various urban design and streetscape policies. These policies have been consolidated into a document entitled "MTPO Urban Design Policy Manual." Therefore, unless otherwise stated within this "List of Priority Projects" document, all priority project recommendations shall be in conformance with the "MTPO Urban Design Policy Manual" document.

### **PUBLIC INVOLVEMENT AND SERVICE EQUITY**

Citizen involvement in the TIP three-step process is promoted through the MTPO's Public Involvement Process which was developed and adopted pursuant to 23 CFR 450.316(b)(1) requirements. The MTPO's Public Involvement Plan describes a process to involve the public, including private transportation operators, in the transportation planning process, including the annual development of the TIP, in accordance with Chapter 339.175(7), Florida Statutes. In addition, the MTPO's Public Involvement Plan includes strategies to address service equity, including outreach to socioeconomic communities that have traditionally been underrepresented in the transportation planning process. The MTPO sponsors workshops and charrettes, as necessary, regarding projects in the TIP.

MTPO staff provides local news media notification of meetings when the List of Priority Projects is scheduled for review and approval by the MTPO and its Advisory Committees, thereby providing citizens an opportunity to participate in the development of the List of Priority Projects. To inform the general public and other interested persons who may want to review and comment on the List of Priority Projects, public notice is also provided through the Clerk of the City of Gainesville, who places meeting notices on City's Community Calendar and in the local newspaper's listing of public meetings of the week.

### **FREIGHT SHIPPERS**

The MTPO maintains a database of freight shippers that serve and/or are based in the Gainesville Metropolitan Area. Correspondence is sent to the freight shippers inviting them to participate in the development of the TIP. Freight shippers are notified of the MTPO meeting dates when the List of Priority Projects and the TIP documents are considered by the MTPO.

## **PUBLIC TRANSPORTATION USERS**

The MTPO coordinates with Regional Transit System (RTS) staff for public involvement in the development of the TIP. The Regional Transit System Advisory Board provides input for transit projects to be included in the List of Priority Projects. In addition, RTS staff conducts transit forums to gather public input. The Alachua County Transportation Disadvantaged Coordinating Board (ACTDCB), which includes public transportation users, provides input for transportation disadvantaged projects to be included in the List of Priority Projects. Each year, MTPO staff solicits input from RTS and ACTDCB for projects to be included in the List of Priority Projects.

## **SAFETY AND SECURITY IN THE TRANSPORTATION PLANNING PROCESS**

The Florida Department of Transportation supports a network of Community Traffic Safety Teams. These Teams are comprised of state and local technical expertise for transportation system management and planning, public safety, including police and fire personnel, and education. In addition to MTPO staff, the Alachua County Traffic Safety Team (ACTST) is comprised of representatives from:

<b>STATE OF FLORIDA</b>	<b>ALACHUA COUNTY</b>	<b>CITY OF GAINESVILLE</b>
Florida Department of Transportation	Fire Rescue	Fire Rescue
Florida Highway Patrol	School Board	Police Department
University of Florida (UF) T2 Center	Sheriff's Office	Public Works Department
UF Facilities Planning & Construction	Public Works Department	

The MTPO receives ACTST recommendations for safety-funded projects in the List of Priority Projects. Currently, the focus of transportation system security is on airport facilities.

## II

### PROJECT PRIORITIES

#### **BICYCLE/PEDESTRIAN/ENHANCEMENT PRIORITIES**

Table 1A identifies enhancement-funded bicycle/pedestrian project priorities for the Fiscal Years 2012/2013 - 2016/2017 TIP. Table 1B identifies Alachua County-maintained facility bicycle/pedestrian project priorities. Table 1C identifies City of Gainesville-maintained facility bicycle/pedestrian project priorities.

#### **CAPACITY/MULTIMODAL PRIORITIES**

Table 2A identifies State Highway System capacity/multimodal project priorities for the Fiscal Years 2012/2013 - 2016/2017 TIP. Table 2B identifies Alachua County-maintained facility capacity/multimodal project priorities. Table 2C identifies City of Gainesville-maintained capacity/multimodal project priorities.

#### **INTELLIGENT TRANSPORTATION SYSTEM (ITS) PRIORITIES**

Table 3 identifies ITS project priorities for the Fiscal Years 2012/2013 - 2016/2017 TIP.

#### **LANDSCAPING PRIORITIES**

Table 4 identifies landscaping project priorities for the Fiscal Years 2012/2013 - 2016/2017 TIP.

#### **PROJECT, DEVELOPMENT AND ENVIRONMENT (PD&E) STUDY PRIORITIES**

Table 5A identifies State Highway System PD&E study project priorities for the Fiscal Years 2012/2013 - 2016/2017 TIP. Table 5B identifies Alachua County-maintained facility PD&E study project priorities. Table 5C identifies City of Gainesville-maintained facility PD&E study project priorities.

#### **PUBLIC TRANSPORTATION PRIORITIES**

Table 6 identifies public transportation project priorities. This category includes: commuter assistance projects; intermodal facility projects; park-and-ride facility projects railroad right-of-way projects; transit system projects for the Fiscal Years 2012/2013 - 2016/2017.

#### **RIGHT-OF-WAY(ROW) PRIORITIES**

Table 7A identifies State Highway System ROW project priorities for the Fiscal Years 2012/2013 - 2016/2017 TIP. Table 7B identifies Alachua County-maintained facility ROW project priorities. Table 7C identifies City of Gainesville-maintained facility ROW project priorities.

### **SAFE ROUTES TO SCHOOL PRIORITIES**

Table 8 identifies transportation safe routes to school project priorities developed by the School Board of Alachua County (SBAC) staff, Bicycle/Pedestrian Advisory Board (B/PAB) and Alachua County Traffic Safety Team (ACTST) for the Fiscal Years 2012/2013 - 2016/2017 TIP.

### **SAFETY PRIORITIES**

Table 9 identifies transportation safety project priorities developed by the Technical Advisory Committee (TAC) and Alachua County Traffic Safety Team (ACTST) for the Fiscal Years 2012/2013 - 2016/2017 TIP.

### **STRATEGIC INTERMODAL SYSTEM (SIS) PRIORITIES**

Table 10 identifies SIS project priorities for the Fiscal Years 2012/2013 - 2016/2017 TIP.

### **SURFACE TRANSPORTATION PROGRAM (STP) FUND PRIORITIES**

Table 11 identifies STP-eligible capacity modification priorities. This category includes: bicycle facility projects; Non-State resurfacing projects; pedestrian facility (including school safety concern) projects; road construction and reconstruction projects; streetlighting; and additional public transportation, traffic operations and transportation disadvantaged projects for the Fiscal Years 2012/2013 - 2016/2017 TIP.

### **TRAFFIC OPERATIONS PRIORITIES**

Table 12A identifies State Highway System traffic operations project priorities. Table 12B identifies local facility traffic operations project priorities. This category includes: congestion management system (CMS) projects; intelligent transportation system (ITS) projects; and intersection modification projects for the Fiscal Years 2012/2013 - 2016/2017 TIP.

### **TRANSIT CORRIDOR DEVELOPMENT PRIORITIES**

Table 13 identifies transit corridor development project priorities for the Fiscal Years 2012/2013 - 2016/2017 TIP.

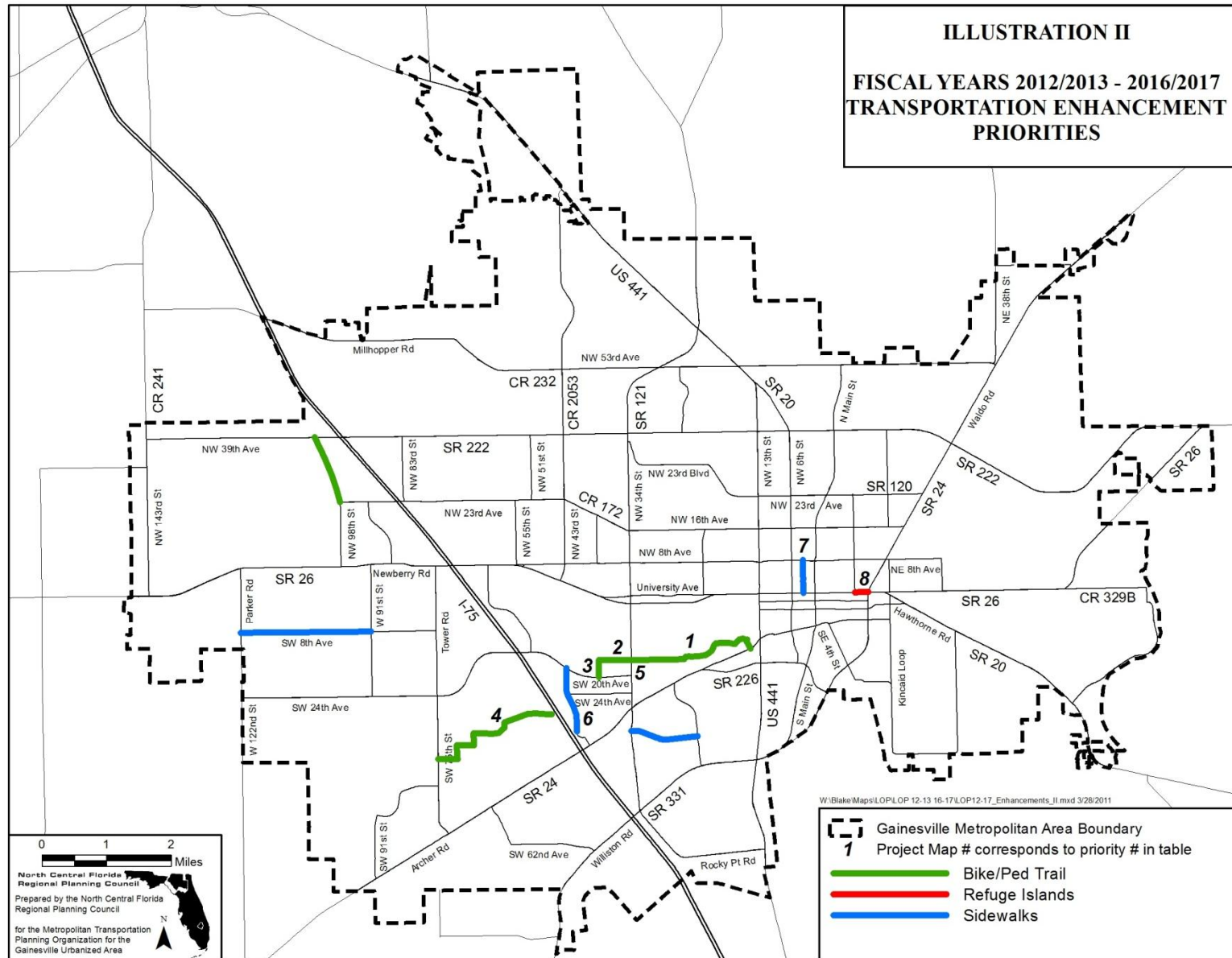
### **TRANSPORTATION DISADVANTAGED PRIORITIES**

Table 14, Table 15, Table 16, Table 17 and Table 18 identify transportation disadvantaged project priorities for the Fiscal Years 2012/2013 - 2016/2017 TIP.

### **TRANSPORTATION REGIONAL INCENTIVE PROGRAM (TRIP) PRIORITIES**

Table 19 identifies TRIP project priorities for the Fiscal Years 2012/2013 - 2016/2017 TIP.

(page left blank intentionally)



**TABLE 1A**

**BICYCLE/PEDESTRIAN PRIORITIES-  
ENHANCEMENT FUND  
FISCAL YEARS 2012/2013 - 2016/2017  
(within the Gainesville Metropolitan Area)**

(Note: Projects in italic text are partially funded, as identified in the Transportation Improvement Program.)

<b>NUMBER</b>	<b>PROJECT</b>	<b>LOCATION</b>	<b>DESCRIPTION</b>
<i>1</i> <i>FDOTTWP</i>	<i>UF Cross Campus Trail</i> <i>[part of Archer Braid*]</i>	<i>FM: SW 34 Street [SR 121]</i> <i>TO: Archer Road [SR 24]</i>	<i>Construct bicycle/pedestrian trail</i>
2	Hull Road Parking Area [part of the Archer Braid*]	FM: End of Hull Road Parking Area TO: SW 34 Street [SR 121]	Construct bicycle/pedestrian trail
3	Hull Road Connector [part of the Bivens Braid*]	FM: SW 20 Avenue TO: End of Hull Road Parking Area	Construct bicycle/pedestrian trail
4	Lake Kanapaha Trail	FM: Tower Road TO: Interstate 75	Construct bicycle/pedestrian trail
5	SW 34 Street Grade-Separated Crossing [part of the Archer Braid*]	AT: SW 34 Street	Construct bicycle/pedestrian grade-separated crossing
6	SW 43 Street	FM: SW 40 Boulevard TO: SW 20 Avenue	Construct ADA-compliant sidewalk
7	NW 3 Street	FM: W University Avenue TO: NW 8 Avenue	Construct ADA-compliant sidewalk
8	E University Avenue [SR 26]	FM: E 9 Street TO: Waldo Road [SR 24]	Pedestrian refuge islands
9	Bus Stop Upgrades	AT: RTS Systemwide	Construct bus stops and sidewalk connections

\*2004 Alachua Countywide Bicycle Master Plan Addendum

ADA- Americans with Disabilities Act

FDOTTWP- Florida Department of Transportation Tentative Work Program-funded project

RTS- Regional Transit System

UF- University of Florida

Initial Enhancement Priorities were developed by the Bicycle/Pedestrian Advisory Board.

**TABLE 1B**

**BICYCLE/PEDESTRIAN PRIORITIES-  
ALACHUA COUNTY-MAINTAINED FACILITIES  
FISCAL YEARS 2012/2013 - 2016/2017  
(within the Gainesville Metropolitan Area)**

(Note: Projects in italic text are partially funded, as identified in the Transportation Improvement Program.)

<b>NUMBER</b>	<b>PROJECT</b>	<b>LOCATION</b>	<b>DESCRIPTION</b>
NA <i>FDOTTWP</i>	<i>SW 8 Avenue Multi-Use Offroad Facility</i>	<i>FM: Parker Road TO: SW 91 Street</i>	<i>Construct Multi-Use Offroad Facility</i>
NA	NW 98 Street Multi-Use Offroad Facility	FM: NW 23 Avenue TO: NW 39 Avenue [SR 222]	Construct bicycle/pedestrian trail

\*2004 Alachua Countywide Bicycle Master Plan Addendum

ADA- Americans with Disabilities Act

FDOTTWP- Florida Department of Transportation Tentative Work Program-funded project

RTS- Regional Transit System

UF- University of Florida

Bicycle/Pedestrian Priorities- Alachua County-Maintained Facilities are derived from the adopted Year 2035 Livable Community Reinvestment Plan. These projects were included in the Long Range Transportation Plan at the request of Alachua County.

**TABLE 1C**

**BICYCLE/PEDESTRIAN PRIORITIES-  
CITY OF GAINESVILLE-MAINTAINED FACILITIES  
FISCAL YEARS 2012/2013 - 2016/2017  
(within the Gainesville Metropolitan Area)**

(Note: Projects in italic text are partially funded, as identified in the Transportation Improvement Program.)

<b>NUMBER</b>	<b>PROJECT</b>	<b>LOCATION</b>	<b>DESCRIPTION</b>
<i><b>Partially Funded</b></i>	<i>SW 35 Place Sidewalk</i>	<i>FM: SW 34 Street [SR 121] TO: SW 23 Terrace</i>	<i>Construct ADA-compliant concrete sidewalk</i>

\*2004 Alachua Countywide Bicycle Master Plan Addendum

ADA- Americans with Disabilities Act  
RTS- Regional Transit System  
UF- University of Florida

Bicycle/Pedestrian Priorities- City of Gainesville-Maintained Facilities are derived from the adopted Year 2035 Livable Community Reinvestment Plan. These projects were included in the Long Range Transportation Plan at the request of the City of Gainesville.



**TABLE 2A**

**CAPACITY / MULTIMODAL PRIORITIES- STATE HIGHWAY SYSTEM  
FISCAL YEARS 2012/2013 - 2016/2017  
(within the Gainesville Metropolitan Area)**

(Note: Projects in italic text are partially funded, as identified in the Transportation Improvement Program.)

<b>NUMBER</b>	<b>PROJECT</b>	<b>LOCATION</b>	<b>DESCRIPTION</b>
1	SE 16 Avenue [SR 226]	FM: Main Street [SR 329] TO: Williston Road [SR 331]	Reconstruct MTPO-approved Transportation System Management (TSM) Alternative
2 <i>Partially Funded</i>	<i>NW 34 Street [SR 121]</i>	<i>FM: NW 16 Avenue TO: US 441</i>	<i>Construction of center turnlanes along this facility</i>
3	University Avenue [SR 26]	FM: Gale Lemerand Drive TO: Waldo Road [SR 24]	Conduct Multimodal Emphasis Corridor Study
4	W 13 Street [US 441]	FM: Archer Road [SR 24] TO: NW 33 Avenue	Conduct Multimodal Emphasis Corridor Study
5	Waldo Road Multiway Boulevard	FM: E University Avenue [SR 26] TO: NE 39 Avenue [SR 222]	Redesign to support bus rapid transit, multi-use trail and corridor redevelopment study (PD&E)
6	Bus Rapid Transit (BRT) Corridor Infrastructure-partial	FM: Santa Fe Village TO: Gainesville Regional Airport	Installation of BRT infrastructure
7	Archer Road [SR 24] BRT	FM: MTPO Boundary TO: SW 45 Street	Dedicated lane(s) design, additional roadway capacity and corridor management study (PD&E)
8	Williston Road [SR 121]	FM: SW 62 Avenue TO: SW 35 Way	Additional roadway capacity and corridor management study (PD&E)

Initial Capacity/Multimodal Priorities were developed by MTPO staff, based on the Year 2035 Long Range Transportation Plan Cost Feasible Plan projects.

**TABLE 2B**

**CAPACITY / MULTIMODAL PRIORITIES-  
ALACHUA COUNTY-MAINTAINED FACILITIES  
FISCAL YEARS 2012/2013 - 2016/2017  
(within the Gainesville Metropolitan Area)**

(Note: Projects in italic text are partially funded, as identified in the Transportation Improvement Program.)

<b>NUMBER</b>	<b>PROJECT</b>	<b>LOCATION</b>	<b>DESCRIPTION</b>
1	SW 20 Avenue	FM: SW 61 Street TO: SW 52 Street	4-laning and multi-use path
2	SW 8 Avenue- Phase 2	FM: SW 143 Street TO: SW 122 Street	2-lane roadway and multi-use path
3	NW 23 Avenue	FM: NW 59 Terrace TO: NW 51 Street	4-laning and resurfacing
4	NW 23 Avenue	FM: Ft. Clarke Boulevard TO: NW 83 Street	4-laning
5	SE 43 Street	FM: Hawthorne Road [SR 20] TO: University Avenue [SR 26]	Construction of two-way left turnlanes, multi-use path and signalization
6	SW 45 Street/ SW 47 Street	FM: Archer Road [SR 24] TO: SW 30 Avenue	New roadway with travel lanes, BRT dedicated transit lanes and multi-use path
7	SW 30 Avenue	FM SW 47 Street TO: SW 43 Street	New Interstate 75 overpass with travel lanes, BRT dedicated transit lanes and the Archer Braid Trail
8	NW 83 Street	FM: NW 39 Avenue [SR 222] TO: NW 46 Avenue	New roadway with travel lanes, BRT dedicated transit lanes and the Millhopper Greenway
9	NW 83 Street	FM: NW 23 Avenue TO: NW 39 Avenue [SR 222]	BRT dedicated transit lanes
10	Ft. Clarke Boulevard/ NW 83 Street Corridor	FM: Newberry Road [SR 26] TO: NW 23 Avenue	BRT dedicated transit lanes & new multimodal-only Interstate 75 overpass
11	NW 46 Avenue	FM: NW 98 Street TO: NW 83 Street	New roadway with travel lanes, BRT dedicated transit lanes & new multi-use path and new Interstate 75 overpass

Initial Capacity/Multimodal Priorities- Alachua County -Maintained Facilities were developed by MTPO staff, based on the Year 2035 Long Range Transportation Plan Cost Feasible Plan projects. These projects were included in the Long Range Transportation Plan at the request of Alachua County.

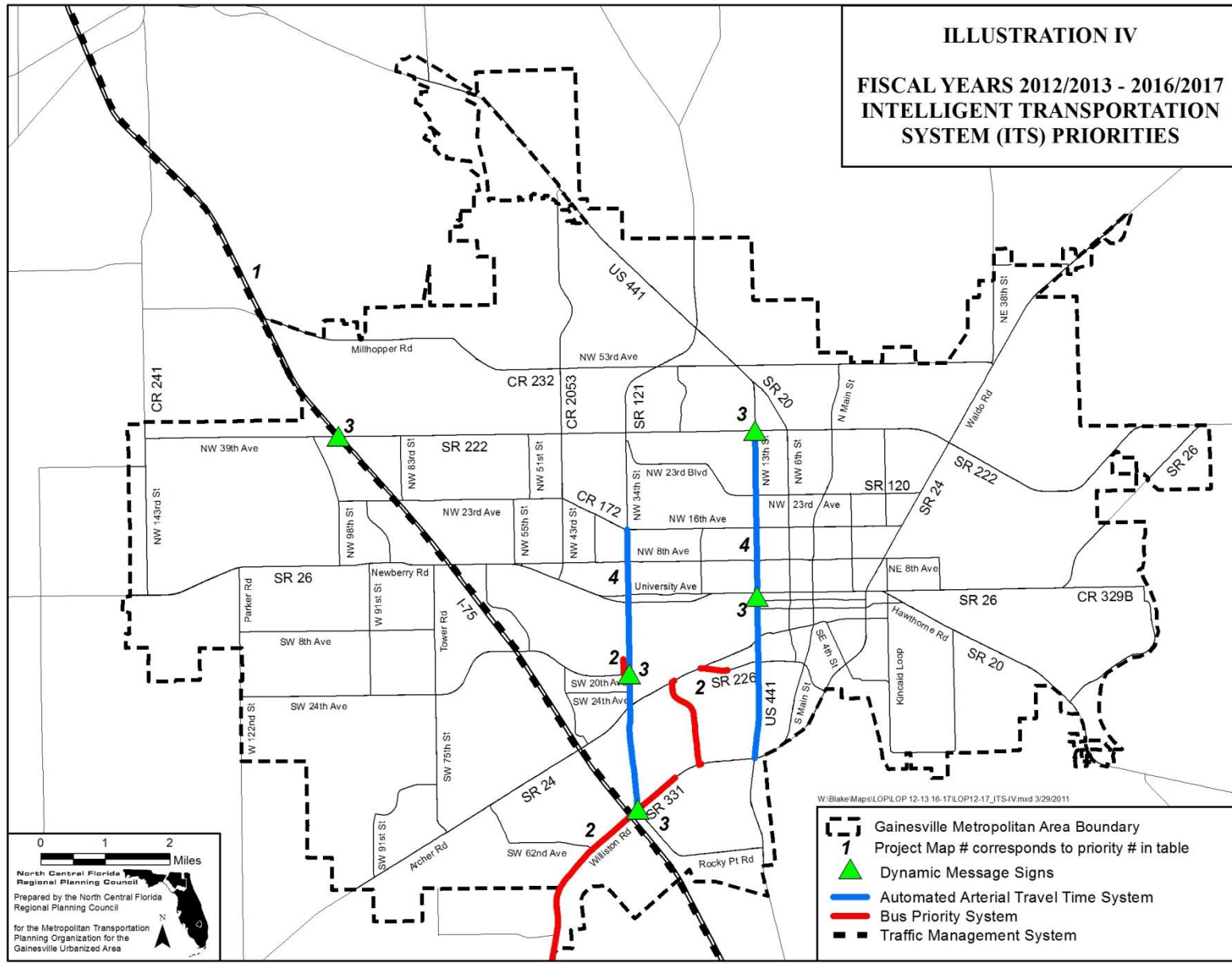
**TABLE 2C**

**CAPACITY / MULTIMODAL PRIORITIES-  
CITY OF GAINESVILLE-MAINTAINED FACILITIES  
FISCAL YEARS 2012/2013 - 2016/2017  
(within the Gainesville Metropolitan Area)**

(Note: Projects in italic text are partially funded, as identified in the Transportation Improvement Program.)

<b>NUMBER</b>	<b>PROJECT</b>	<b>LOCATION</b>	<b>DESCRIPTION</b>
NA	SE 4 Street- Phase 2	FM: Williston Road [SR 331] TO: Depot Avenue	Reconstruction
NA	SW 62 Boulevard	FM: Archer Road [SR 24] TO: Newberry Road [SR 24]	Four lanes plus two additional BRT lanes in the middle

Initial Capacity/Multimodal Priorities- City of Gainesville -Maintained Facilities were developed by MTPO staff, based on the Year 2035 Long Range Transportation Plan Cost Feasible Plan projects. These projects were included in the Long Range Transportation Plan at the request of the City of Gainesville.



**TABLE 3**

**INTELLIGENT TRANSPORTATION SYSTEM (ITS) PRIORITIES  
FISCAL YEARS 2012/2013 - 2016/2017  
(Gainesville Metropolitan Area/Countywide)**

<b>NUMBER</b>	<b>PROJECT</b>	<b>LOCATION</b>	<b>DESCRIPTION</b>
1	Traffic Management System- Phase V- Interstate 75	FM: Marion Countyline TO: Columbia Countyline	<p>A. Add Dynamic Message Signs (DMS) to alert motorists of traffic conditions and travel times.</p> <p>B. Add pan-tilt-zoom traffic surveillance cameras for active traffic management of the freeway. This allows operators at the Gainesville Traffic Management Center (TMC) to alert motorists of existing conditions using the DMS and the 511 information hotline.</p> <p>C. Add traffic detection technology so automated alerts can be sent to the Gainesville TMC operators when highway speeds drop below a certain threshold as well as for highway traffic studies and travel time collection.</p>
2	Regional Transit System- Bus Priority System-	-	Adding signal priority to heavily used bus routes for University of Florida students will make those routes more reliable, thus resulting in higher passenger capacity and fewer vehicles on the road.
	A. Route 9- Archer Road [SR 24]	FM: SW 23 Terrace TO: SW 23 Drive	
	Route 9- Williston Road [SR 331]	FM: SW 25 Terrace TO: Columbia Countyline	
	B. Route 20- SW 34 Street [SR 121]	FM: SW 20 Avenue TO: Hull Road	
	C. Route 21- SW 34 Street [SR 121]	FM: SW 20 Avenue TO: Hull Road	
	D. Route 35- Archer Road [SR 24]	FM: NW 13 Street [US 441] TO Waldo Road [SR 24]	
	Route 35- SW 16 Avenue [SR 226]	FM: Archer Road [SR 24] TO: Shealy Drive	
	Route 35- SW 34 Street [SR 121]	FM: SW 35 Place TO: SW 16 Avenue [SR 226]	
	Route 35- SW 16 Avenue [SR 226]	FM: SW 34 Street [SR TO Waldo Road [SR 24]	
3	Dynamic Message Signs on State Highway Arterials	-	Dynamic message on arterials will alert drivers of existing traffic conditions, alternate routes, detour routes in the event interstate 75 is shut down, and travel times.
	A. SW 34 Street [SR 121]	AT: SW 20 Avenue [southbound]	
	B. SW 34 Street [SR 121]	AT: Williston Road [SR 331] [eastbound]	
	C. W 13 Street [US 441]	AT: University Avenue [SR 26]	
	D. NW 13 Street [US 441]	AT: NW 39 Avenue [SR 222] [westbound]	
	E. NW 13 Street [US 441]	AT: NW 39 Avenue [SR 222] [northbound]	
	F. NW 39 Avenue [SR 222]	AT: Interstate 75 [eastbound]	

**TABLE 3 (Continued)**

**INTELLIGENT TRANSPORTATION SYSTEM (ITS) PRIORITIES  
FISCAL YEARS 2012/2013 - 2016/2017  
(Gainesville Metropolitan Area/Countywide)**

<b>NUMBER</b>	<b>PROJECT</b>	<b>LOCATION</b>	<b>DESCRIPTION</b>
4	Expand Automated Arterial Travel Time System-		Expanding the Arterial Travel Time System will provide motorists with more real time information via Google map or DMS for actual travel times to various spots in the urban area. Motorists may be able to make a different route choice based on information they receive. The travel times can also be used for traffic studies to measure development-related impacts
	A. W 13 Street [US 441]	FM: Williston Road [SR 331] TO: NW 39 Avenue [SR 222]	
	B. SW 34 Street [SR 121]	FM: Interstate 75 TO: NW 16 Avenue	
5	Travel Demand Management	AT: Gainesville Metropolitan Areawide	Information technologies project that addresses travel demand strategies, such as high occupancy vehicle (HOV) lanes and other travel demand technologies.

Initial ITS Priorities were developed by City of Gainesville Traffic Operations staff.

(page left blank intentionally)



**TABLE 4**

**LANDSCAPING PRIORITIES-  
STATE HIGHWAY SYSTEM (SHS) ONLY\*  
FISCAL YEARS 2012/2013 - 2016/2017  
(within the Gainesville Metropolitan Area)**

(Note: Projects in italic text are partially funded, as identified in the Transportation Improvement Program.)

<b>NUMBER</b>	<b>PROJECT</b>	<b>LOCATION</b>	<b>DESCRIPTION</b>
1	SW 34 Street [SR 121]	FM: Williston Road [SR 331] TO: Archer Road [SR 24]	provide shade tree landscaping for pedestrian facilities where possible and landscaping to grassed medians where it is not possible
2	Williston Road [SR331]	FM: SW 34 Street [SR 121] TO: SW 23 Terrace	provide shade tree landscaping for pedestrian facilities where possible and landscaping to grassed medians where it is not possible
3	West 6 Street Rail/Trail	FM: Depot Avenue TO: NW 16 Avenue	provide shade tree landscaping for pedestrian facilities where possible and landscaping to grassed medians where it is not possible
4	NW 13 Street [US 441]	FM: NW 39 Avenue [SR 222] TO: NW 6 Street [SR 20]	provide shade tree landscaping for pedestrian facilities where possible and landscaping to grassed medians where it is not possible
5	NW 39 Avenue [SR 222]	FM: NW 43 Street TO: NW 34 Street [SR 121]	provide shade tree landscaping for pedestrian facilities where possible and landscaping to grassed medians where it is not possible
6	Hawthorne Road [SR 20]	FM: SE 27 Street TO: SE 55 Boulevard	provide shade tree landscaping for pedestrian facilities where possible and landscaping to grassed medians where it is not possible
7	Archer Road [SR 24]	FM: SW 91 Street TO: Interstate 75	provide shade tree landscaping for pedestrian facilities where possible and landscaping to grassed medians where it is not possible
8	Newberry Road [SR 26]	FM: NW 98 Street TO: Interstate 75	provide shade tree landscaping for pedestrian facilities where possible and landscaping to grassed medians where it is not possible

\* Projects must be constructible within the available State Road right-of-way.

Initial Landscaping Priorities were developed by Alachua County and City of Gainesville Public Works Department staff.



**TABLE 5A**

**PROJECT, DEVELOPMENT AND ENVIRONMENT (PD&E) STUDY PRIORITIES  
STATE HIGHWAY SYSTEM  
FISCAL YEARS 2012/2013 - 2016/2017  
(within the Gainesville Metropolitan Area)**

(Note: Projects in italic text are partially funded, as identified in the Transportation Improvement Program.)

<b>NUMBER</b>	<b>PROJECT</b>	<b>LOCATION</b>	<b>DESCRIPTION</b>
1	NW 34 Street [SR 121]	FM: NW 16 Avenue TO: US 441	conduct PD&E study in order to add turnlanes in various locations
2	University Avenue [SR 26]	FM: Gale Lemerand Drive TO: Waldo Road [SR 24]	Conduct Multimodal Emphasis Corridor Study
3	W 13 Street [US 441]	FM: Archer Road [SR 24] TO: NW 33 Avenue	Conduct Multimodal Emphasis Corridor Study
4	Waldo Road Multiway Boulevard	FM: E University Avenue [SR 26] TO: NE 39 Avenue [SR 222]	Redesign to support bus rapid transit, multi-use trail and corridor redevelopment study (PD&E)
5	Archer Road [SR 24] BRT	FM: MTPO Boundary TO: SW 45 Street	Dedicated lane(s) design, additional roadway capacity and corridor management study (PD&E)
6	Williston Road [SR 121]	FM: SW 62 Avenue TO: SW 35 Way	Additional roadway capacity and corridor management study (PD&E)

Initial PD&E Study Priorities were developed by MTPO staff, based on the Year 2035 Long Range Transportation Plan Cost Feasible Plan projects.

**TABLE 5B**

**PROJECT, DEVELOPMENT AND ENVIRONMENT (PD&E) STUDY PRIORITIES  
ALACHUA COUNTY-MAINTAINED FACILITIES  
FISCAL YEARS 2012/2013 - 2016/2017  
(within the Gainesville Metropolitan Area)**

(Note: Projects in italic text are partially funded, as identified in the Transportation Improvement Program.)

<b>NUMBER</b>	<b>PROJECT</b>	<b>LOCATION</b>	<b>DESCRIPTION</b>
1	SW 20 Avenue Reconstruction	FM: SW 61 Street TO: SW 52 Street	Conduct PD&E study in order to construct a 4-lane divided facility and multi-use path
2	SW 8 Avenue- Phase 2	FM: SW 143 Street TO: SW 122 Street	Conduct PD&E study for 2-lane roadway and multi-use path
3	NW 23 Avenue	FM: NW 59 Terrace TO: NW 51 Street	Conduct PD&E study for 4-laning and resurfacing
4	NW 23 Avenue	FM: Ft. Clarke Boulevard TO: NW 83 Street	Conduct PD&E study for 4-laning
5	SE 43 Street	FM: Hawthorne Road [SR 20] TO: University Avenue [SR 26]	Conduct PD&E study for construction of two-way left turnlanes, multi-use path and signalization
6	SW 45 Street/ SW 47 Street	FM: Archer Road [SR 24] TO: SW 30 Avenue	Conduct PD&E study for new roadway with travel lanes, BRT dedicated transit lanes and multi-use path
7	SW 30 Avenue	FM SW 47 Street TO: SW 43 Street	Conduct PD&E study for new Interstate 75 overpass with travel lanes, BRT dedicated transit lanes and the Archer Braid Trail
8	NW 83 Street	FM: NW 39 Avenue [SR 222] TO: NW 46 Avenue	Conduct PD&E study for new roadway with travel lanes, BRT dedicated transit lanes and the Millhopper Greenway
9	NW 83 Street	FM: NW 23 Avenue TO: NW 39 Avenue [SR 222]	Conduct PD&E study for BRT dedicated transit lanes
10	Ft. Clarke Boulevard/ NW 83 Street Corridor	FM: Newberry Road [SR 26] TO: NW 23 Avenue	Conduct PD&E study for BRT dedicated transit lanes & new multimodal-only Interstate 75 overpass
11	NW 46 Avenue	FM: NW 98 Street TO: NW 83 Street	Conduct PD&E study for new roadway with travel lanes, BRT dedicated transit lanes & new multi-use path and new Interstate 75 overpass

Initial PD&E Study Priorities- Alachua County-Maintained Facilities were developed by MTPO staff, based on the Year 2035 Long Range Transportation Plan Cost Feasible Plan projects. These projects were included in the Long Range Transportation Plan at the request of Alachua County.

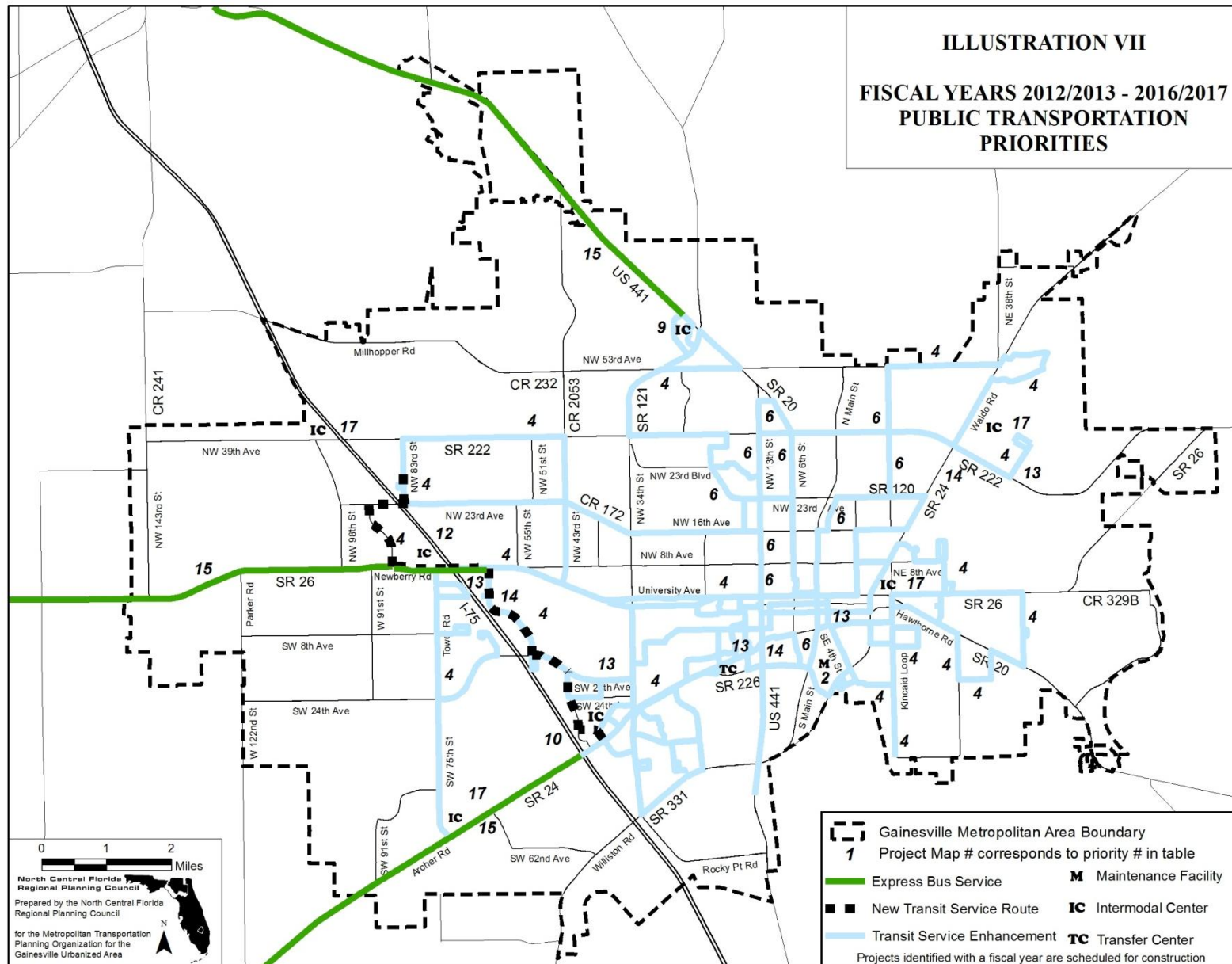
**TABLE 5C**

**PROJECT, DEVELOPMENT AND ENVIRONMENT (PD&E) STUDY PRIORITIES  
CITY OF GAINESVILLE-MAINTAINED FACILITIES  
FISCAL YEARS 2012/2013 - 2016/2017  
(within the Gainesville Metropolitan Area)**

(Note: Projects in italic text are partially funded, as identified in the Transportation Improvement Program.)

<b>NUMBER</b>	<b>PROJECT</b>	<b>LOCATION</b>	<b>DESCRIPTION</b>
NA	SE 4 Street- Phase 2	FM: Williston Road [SR 331] TO: Depot Avenue	Conduct PD&E study for reconstruction
NA	SW 62 Boulevard	FM: Archer Road [SR 24] TO: Newberry Road [SR 24]	Conduct PD&E study for four lanes plus two additional BRT lanes in the middle

Initial PD&E Study Priorities- City of Gainesville-Maintained Facilities were developed by MTPO staff, based on the Year 2035 Long Range Transportation Plan Cost Feasible Plan projects. These projects were included in the Long Range Transportation Plan at the request of the City of Gainesville.



**TABLE 6**

**PUBLIC TRANSPORTATION PRIORITIES  
FISCAL YEARS 2012/2013 - 2016/2017  
(within the Gainesville Metropolitan Area)**

(Note: Projects in italic text are partially funded, as identified in the Transportation Improvement Program.)

<b>NUMBER</b>	<b>PROJECT</b>	<b>LOCATION</b>	<b>DESCRIPTION</b>
<i>1</i> <b>Funded Annually</b>	<i>Block Grant- Public Transit Operating</i>	<i>Regional Transit System (RTS) Systemwide</i>	<i>Operating Assistance [Funded annually by State]*</i>
2 2A 2B 2C	Enhance Bus Service Facilities- RTS Phase 2 of 4 Maintenance Facility RTS Phase 3 of 4 Maintenance Facility RTS Phase 4 of 4 Maintenance Facility	RTS Systemwide	Design, engineering and construction of RTS maintenance facilities [\$52.4 million unfunded; <i>RTS Phase 1 of 4 Maintenance Facility is funded</i> ]
<i>3</i> <b>Partially Funded</b>	<i>Capital Equipment- purchase of rolling stock</i>	<i>RTS Systemwide</i>	<i>30 new buses for replacement of aged fleet and expansion of services, including vehicles and service vehicles</i>
4	Service Development Funding - to include any of the TDP service enhancements	RTS Systemwide	Implementation of new routes, increased frequencies of routes and extended hours of service as per RTS Transit Development Plan, MTPO 2035 Transportation Plan and City Comprehensive Plan
5	Enhance Bus Service	RTS Systemwide	Implement increases of service frequencies of routes and extended hours of service according to the RTS Transit Development Plan and MTPO 2025 Transportation Plan
6	RTS Bus Stop Amenities	RTS Systemwide	Purchase and install bus shelters bicycle racks, etc.
7	Regional Intermodal Transportation Center	AT: Archer Road [SR 24] & SW 16 Avenue [SR 226] intersection	Planning, design, engineering and construction of a regional multimodal regional transportation center [site not determined]
8	Commuter Assistance	RTS Systemwide	Commuter Assistance Grants
9	Park-and-Ride Lot with bus service	AT: US 441/SR 121	Construct park-n-ride lot with transit service
10	Archer Road [SR 24] Intermodal Center [Butler Plaza]	AT: Interstate 75	Construct transit transfer facility with park-n-ride lot- Butler Plaza
11	Capital Equipment- Purchase Fare Collection Equipment	RTS Systemwide	Purchase new fareboxes for existing fleet, upgrade vault, ticket vending and card service equipment
12	Newberry Road [SR 26] Transfer Station with Park-and-Ride	Oaks Mall Area	Station would include park-and-ride lot with connections to future BRT service
13	Capital- Construct BRT Stations	Along Preferred Configuration	Construct transit stations along preferred BRT configuration(s)

**TABLE 6 (Continued)**

**PUBLIC TRANSPORTATION PRIORITIES  
FISCAL YEARS 2012/2013 - 2016/2017  
(within the Gainesville Metropolitan Area)**

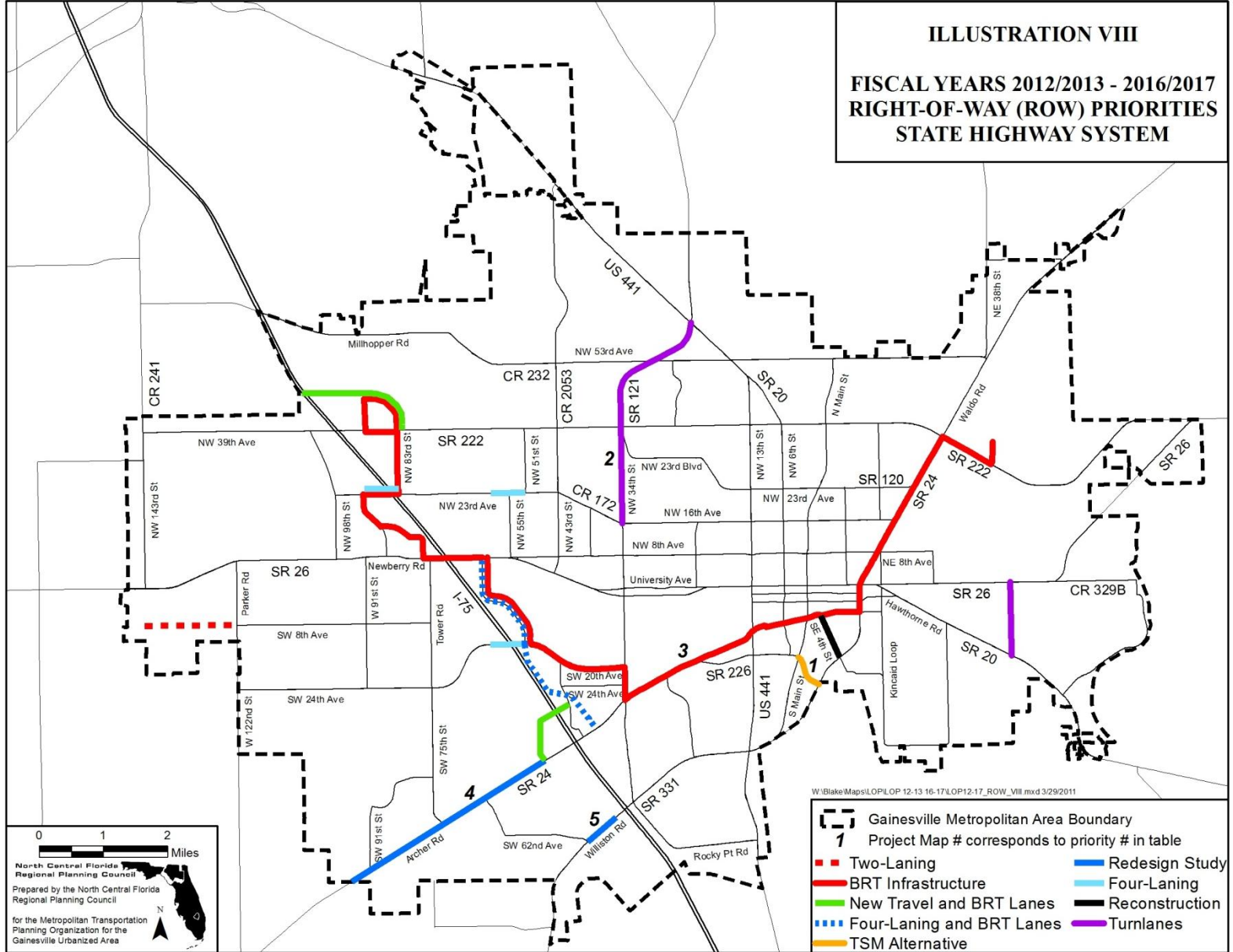
(Note: Projects in italic text are partially funded, as identified in the Transportation Improvement Program.)

<b>NUMBER</b>	<b>PROJECT</b>	<b>LOCATION</b>	<b>DESCRIPTION</b>
14	Service- Bus Rapid Transit (BRT)	Preferred BRT Configuration	Implement BRT service according to BRT Study and System Map
15	Capital- Construct Park-And-Ride Lots to Support Express Bus Service	Transportation Corridors- State Road 20; State Road 26; State Road 24; State Road 222; & US 441	Locations and funding to be determined
16	Limited Stop Bus Service to Outlying Municipalities or Unincorporated Alachua County to Park-And-Ride Lots or Traditional Neighborhood developments [note: no funding available and no locations determined- service priority contingent on community funding support]	Transportation Corridors- State Road 20; State Road 26; State Road 24; State Road 222; & US 441	Initiate full funding agreement with Alachua County for services outside Gainesville City Limit, including ADA trips.  Implement park-and-n-ride service from areas outside Gainesville City Limit into the City of Gainesville, Cities to include Alachua, Archer, Hawthorne, High Springs and Newberry
17	Intermodal Centers	AT: Five Points- [SR 20 @ SR 24]; Gainesville Regional Airport; SpringHills/Santa Fe College [SR 222 @ I-75]; & Archer Road [SR 24] & Tower Road intersection	Construct transit transfer facility with park-n-ride lot [no sites determined]

\* Block Grant program is an annual formula program with funds provided by State legislation.

Initial Public Transportation Priorities were developed by Regional Transit System (RTS) staff, based on the RTS Transit Development Plan.

(page left blank intentionally)



**TABLE 7A**

**RIGHT-OF-WAY (ROW) PRIORITIES-  
STATE HIGHWAY SYSTEM  
FISCAL YEARS 2012/2013 - 2016/2017  
(within the Gainesville Metropolitan Area)**

(Note: Projects in italic text are partially funded, as identified in the Transportation Improvement Program.)

<b>NUMBER</b>	<b>PROJECT</b>	<b>LOCATION</b>	<b>DESCRIPTION</b>
1	SE 16 Avenue [SR 226]	FM: Main Street [SR 329] TO: Williston Road [SR 331]	Acquire necessary ROW for reconstruction for MTPO-approved Transportation System Management (TSM) Alternative
2	NW 34 Street [SR 121]	FM: NW 16 Avenue TO: US 441	Acquire necessary ROW for construction of center turnlanes along this facility
3	Bus Rapid Transit (BRT) Corridor Infrastructure-partial	FM: Santa Fe Village TO: Gainesville Regional Airport	Acquire necessary ROW for installation of BRT infrastructure
4	Archer Road [SR 24] BRT	FM: MTPO Boundary TO: SW 45 Street	Acquire necessary ROW for Dedicated lane(s) design, and additional roadway capacity
5	Williston Road [SR 121]	FM: SW 62 Avenue TO: SW 35 Way	Acquire necessary ROW for additional roadway capacity

Initial ROW Priorities were developed by MTPO staff, based on the Year 2035 Long Range Transportation Plan Cost Feasible Plan projects.

**TABLE 7B**

**RIGHT-OF-WAY (ROW) PRIORITIES-  
ALACHUA COUNTY-MAINTAINED FACILITIES  
FISCAL YEARS 2012/2013 - 2016/2017  
(within the Gainesville Metropolitan Area)**

(Note: Projects in italic text are partially funded, as identified in the Transportation Improvement Program.)

<b>NUMBER</b>	<b>PROJECT</b>	<b>LOCATION</b>	<b>DESCRIPTION</b>
1	SW 20 Avenue Reconstruction	FM: SW 61 Street TO: SW 52 Street	Acquire necessary ROW to construct a 4-lane divided facility and multi-use path
2	SW 8 Avenue- Phase 2	FM: SW 143 Street TO: SW 122 Street	Acquire necessary ROW for 2-lane roadway and multi-use path
3	NW 23 Avenue	FM: NW 59 Terrace TO: NW 51 Street	Acquire necessary ROW for 4-laning and resurfacing
4	NW 23 Avenue	FM: Ft. Clarke Boulevard TO: NW 83 Street	Acquire necessary ROW for 4-laning
5	SE 43 Street	FM: Hawthorne Road [SR 20] TO: University Avenue [SR 26]	Acquire necessary ROW for construction of two-way left turnlanes, multi-use path and signalization
6	SW 45 Street/ SW 47 Street	FM: Archer Road [SR 24] TO: SW 30 Avenue	Acquire necessary ROW for new roadway with travel lanes, BRT dedicated transit lanes and multi-use path
7	SW 30 Avenue	FM SW 47 Street TO: SW 43 Street	Acquire necessary ROW for new Interstate 75 overpass with travel lanes, BRT dedicated transit lanes and the Archer Braid Trail
8	NW 83 Street	FM: NW 39 Avenue [SR 222] TO: NW 46 Avenue	Acquire necessary ROW for new roadway with travel lanes, BRT dedicated transit lanes and the Millhopper Greenway
9	NW 83 Street	FM: NW 23 Avenue TO: NW 39 Avenue [SR 222]	Acquire necessary ROW for BRT dedicated transit lanes
10	Ft. Clarke Boulevard/ NW 83 Street Corridor	FM: Newberry Road [SR 26] TO: NW 23 Avenue	Acquire necessary ROW for BRT dedicated transit lanes & new multimodal-only Interstate 75 overpass
11	NW 46 Avenue	FM: NW 98 Street TO: NW 83 Street	Acquire necessary ROW for new roadway with travel lanes, BRT dedicated transit lanes & new multi-use path and new Interstate 75 overpass

Initial ROW Priorities- Alachua County-Maintained Facilities were developed by MTPO staff, based on the Year 2035 Long Range Transportation Plan Cost Feasible Plan projects. These projects were included in the Long Range Transportation Plan at the request of Alachua County.

**TABLE 7C**

**RIGHT-OF-WAY (ROW) PRIORITIES-  
CITY OF GAINESVILLE-MAINTAINED FACILITIES  
FISCAL YEARS 2012/2013 - 2016/2017  
(within the Gainesville Metropolitan Area)**

(Note: Projects in italic text are partially funded, as identified in the Transportation Improvement Program.)

<b>NUMBER</b>	<b>PROJECT</b>	<b>LOCATION</b>	<b>DESCRIPTION</b>
NA	SE 4 Street- Phase 2	FM: Williston Road [SR 331] TO: Depot Avenue	Acquire necessary ROW for reconstruction
NA	SW 62 Boulevard	FM: Archer Road [SR 24] TO: Newberry Road [SR 24]	Acquire necessary ROW for four lanes plus two additional BRT lanes in the middle

Initial ROW Priorities- City of Gainesville-Maintained Facilities were developed by MTPO staff, based on the Year 2035 Long Range Transportation Plan Cost Feasible Plan projects. These projects were included in the Long Range Transportation Plan at the request of the City of Gainesville.



**TABLE 8**

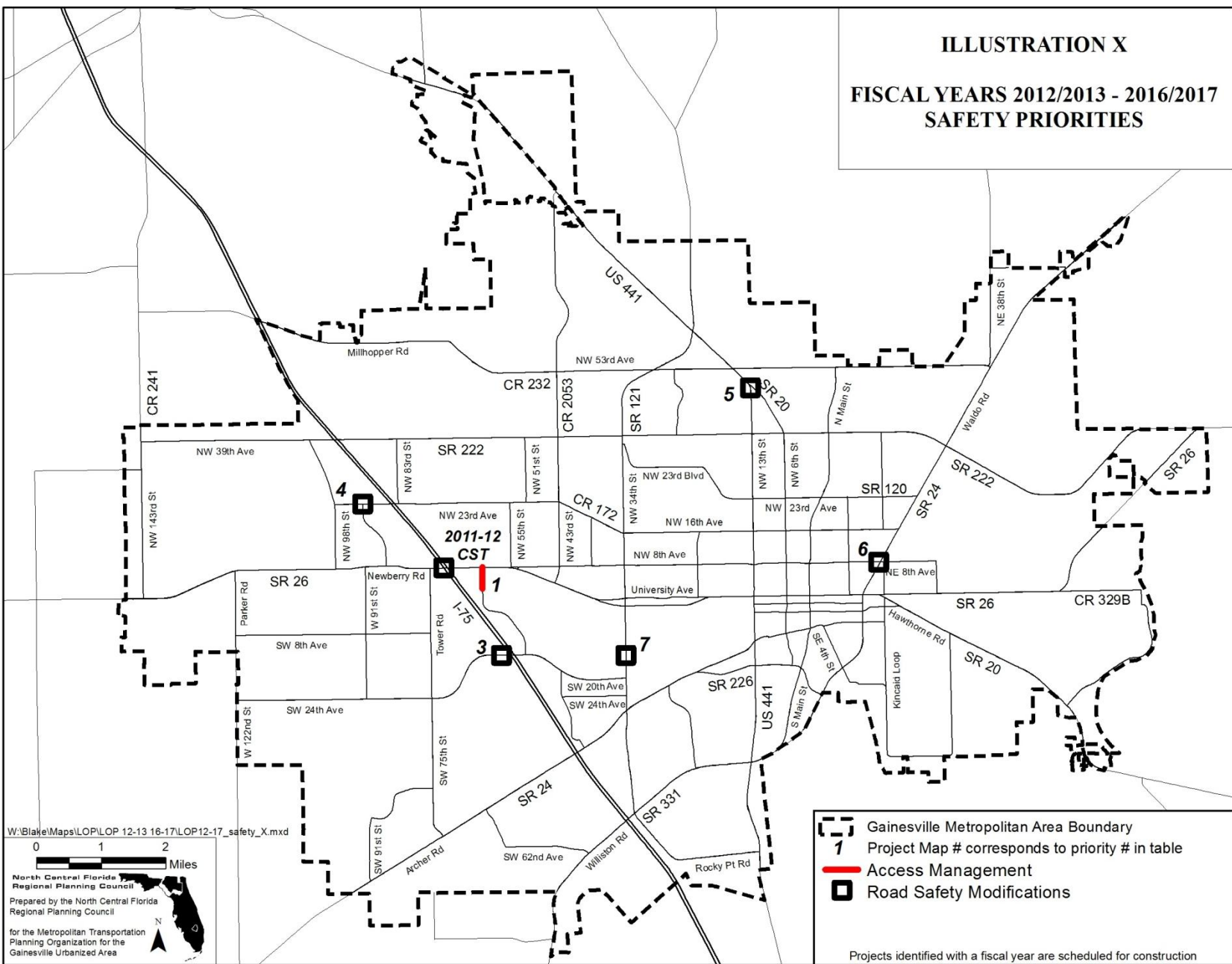
**SAFE ROUTES TO SCHOOL\* PRIORITIES**  
**FISCAL YEARS 2012/2013 - 2016/2017**  
**(within the Gainesville Metropolitan Area)**

(Note: Projects in italic text are partially funded, as identified in the Transportation Improvement Program.)

<b>NUMBER</b>	<b>PROJECT</b>	<b>LOCATION</b>	<b>DESCRIPTION</b>
1	NE 8 Avenue	FM: NE 25 Street TO: 2800 Block	Construct pedestrian access to the Horizon Center/Lofton School
2	NW 23 Avenue/ NW 16 Boulevard/ NW 16 Avenue Corridor	FM: NW 57 Terrace TO: NW 13 Street	Widen sidewalks to accommodate multimodal use
3	NW 39th Avenue [Elementary School H Area]	FM: Powerline Easement TO: NW 112 Street	Construct pedestrian access to the new Elementary School H from adjacent neighborhoods
4	Norton Trail	FM: NW 39 Avenue TO: NW 45 Avenue	Construct pedestrian/bicycle access to Norton Elementary School

\* Kindergarten through 8-Grade within a 2-mile radius of a school campus

Initial Safe Routes to School Priorities were developed by the Alachua County Traffic Safety Team.



**TABLE 9**

**SAFETY PRIORITIES**  
**FISCAL YEARS 2012/2013 - 2016/2017**  
**(within the Gainesville Metropolitan Area)**

<b>NUMBER</b>	<b>PROJECT</b>	<b>LOCATION</b>	<b>DESCRIPTION</b>
1	SW 62 Boulevard	AT: NW 4 Place / Oaks Mall entrance	Access management*
2	Santa Fe College Area	Areawide	Traffic analysis on/off campus
3 <i>Partially Funded</i>	SW 20 Avenue	AT: SW 61 Street	Install eastbound left turnlane on SW 20 Avenue
4	Hidden Oaks Elementary School Right Turnlane	AT: NW 23 Avenue / Fort Clarke Boulevard	Construct right turnlane into school
5	NW 13 Street [US 441]	AT: NW 6 Street [SR 20]	Realign intersection
6	University Avenue [SR 26]	AT: Waldo Road [SR 24]	Intersection modifications to enhance pedestrian/cyclist crossing consisting of: ----- 1. adding Rail/Trail Signage to provide wayfinding and increase aesthetics ----- 2. adding ladder striping to crosswalks ----- 3. adding pedestrian refuges at the medians ----- 4. install a vegetative median on State Road 331 (Williston Road) at the State Road 26 (E. University Avenue) intersection
7	SW 34 Street [SR 121]	AT: Hull Road	Extend southbound left turnlane

\*At this intersection, the observed major crash pattern is angle collisions involving southbound through and eastbound left-turning vehicles. Eastbound vehicles exiting the mall fail to yield the right-of-way and collide with southbound vehicles. This type of crash accounted for 82% of all crashes at this intersection. Peak periods were observed between 1:00 pm to 2:00 pm and 5:00 pm to 6:00 pm. Therefore, explore the possibility of a raised median on NW 62 Boulevard to restrict turning movements, particularly eastbound left. Traffic exiting the mall traveling towards north has several other exit options with signalized and non-signalized driveways along Newberry Road and a signalized driveway at NW 62 Street & NW 1 Place.

Initial Safety Priorities were developed by the Alachua County Traffic Safety Team.



**TABLE 10**

**STRATEGIC INTERMODAL SYSTEM PRIORITIES  
FISCAL YEARS 2012/2013 - 2016/2017  
(within the Gainesville Metropolitan Area)**

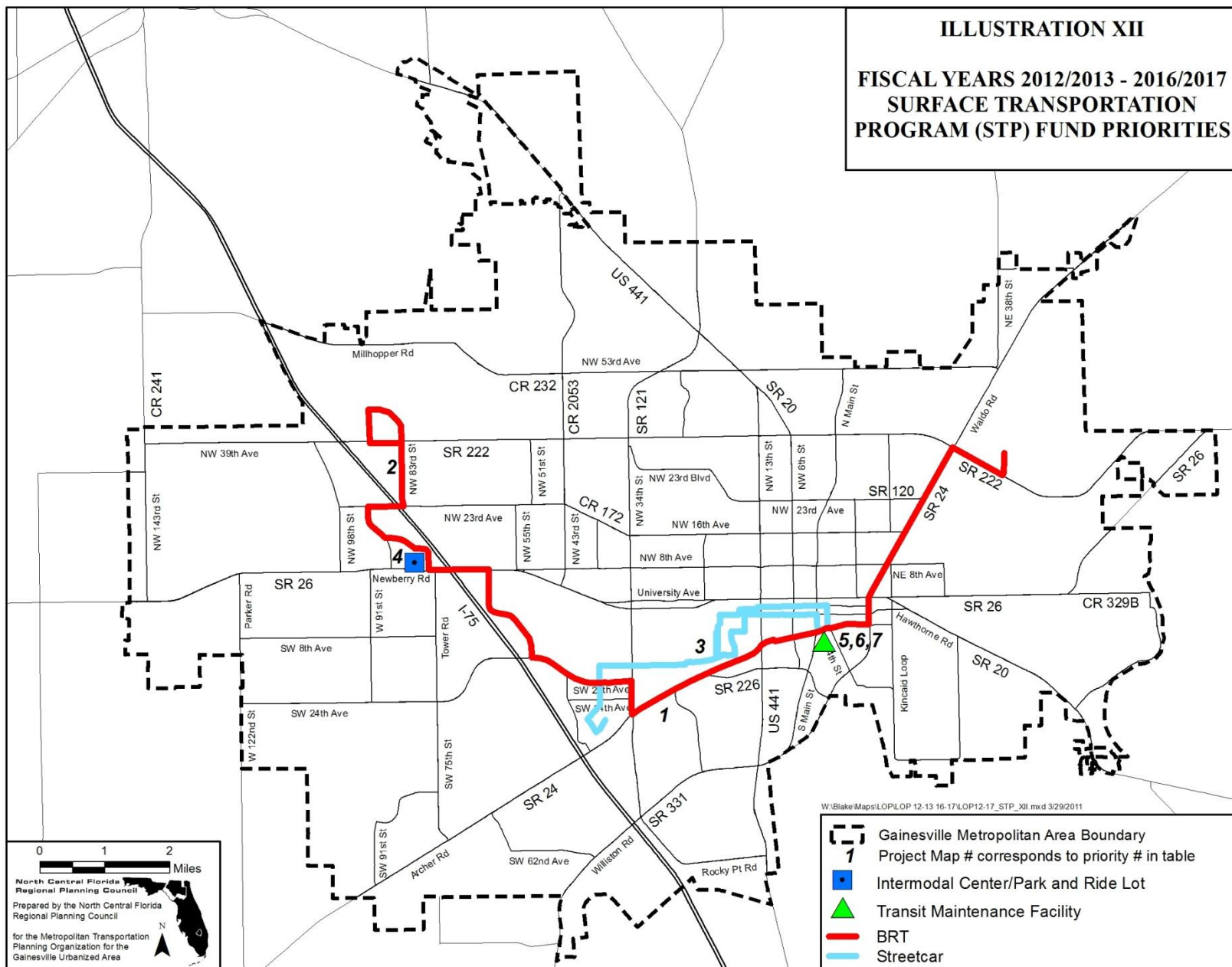
(Note: Projects in italic text are partially funded, as identified in the Transportation Improvement Program.)

<b>NUMBER</b>	<b>PROJECT</b>	<b>LOCATION</b>	<b>DESCRIPTION</b>
1	Interstate 75 Interchange	AT: Williston Road [SR 121] AT: Archer Road [SR 24] AT: Newberry Road [SR 26] AT: NW 39 Avenue [SR 222]	Interchange modifications per SIS Cost Feasible Plan
2 <i>Partially Funded</i>	<i>New gateway entrance to the Gainesville Regional Airport from Waldo Road [SR 24]</i>	<i>FM: Waldo Road [SR 24] TO: Airport Terminal (north of N 39 Avenue [SR 222])</i>	<i>Ingress-egress to the airline terminal and modal connectivity to the north central Florida region</i>
3	NE 39 Avenue [SR 222] access to airport	FM: NE 39 Avenue [SR 222] TO: Airport Terminal  (Gainesville Regional Airport)	Reconfigure ingress-egress, improve curb-and-gutter system, add bike lanes and sidewalks, install stormwater drainage, install traffic guidance system of signs and signals; and install bike lockers
4	Extension of Airport Industrial Park Road	FM: airport service road TO: NE 49 Road  (east end of Airport Industrial Park)	Extend existing service road to provide access to Waldo Road  (Extend existing access road through east end of Airport Industrial Park, from Waldo Road [SR 24])

Note: The MTPO endorses the priorities #2, #3, and #4 listed above:

1. provided they do not compete with roadway capacity construction funding typically available from the Surface Transportation Program (STP); and
2. with the understanding that these funds do not come from existing funds that could be used for other projects within the Gainesville Metropolitan Area.

Initial SIS Priorities were developed by Gainesville Regional Airport staff and the SIS Cost Feasible Plan.



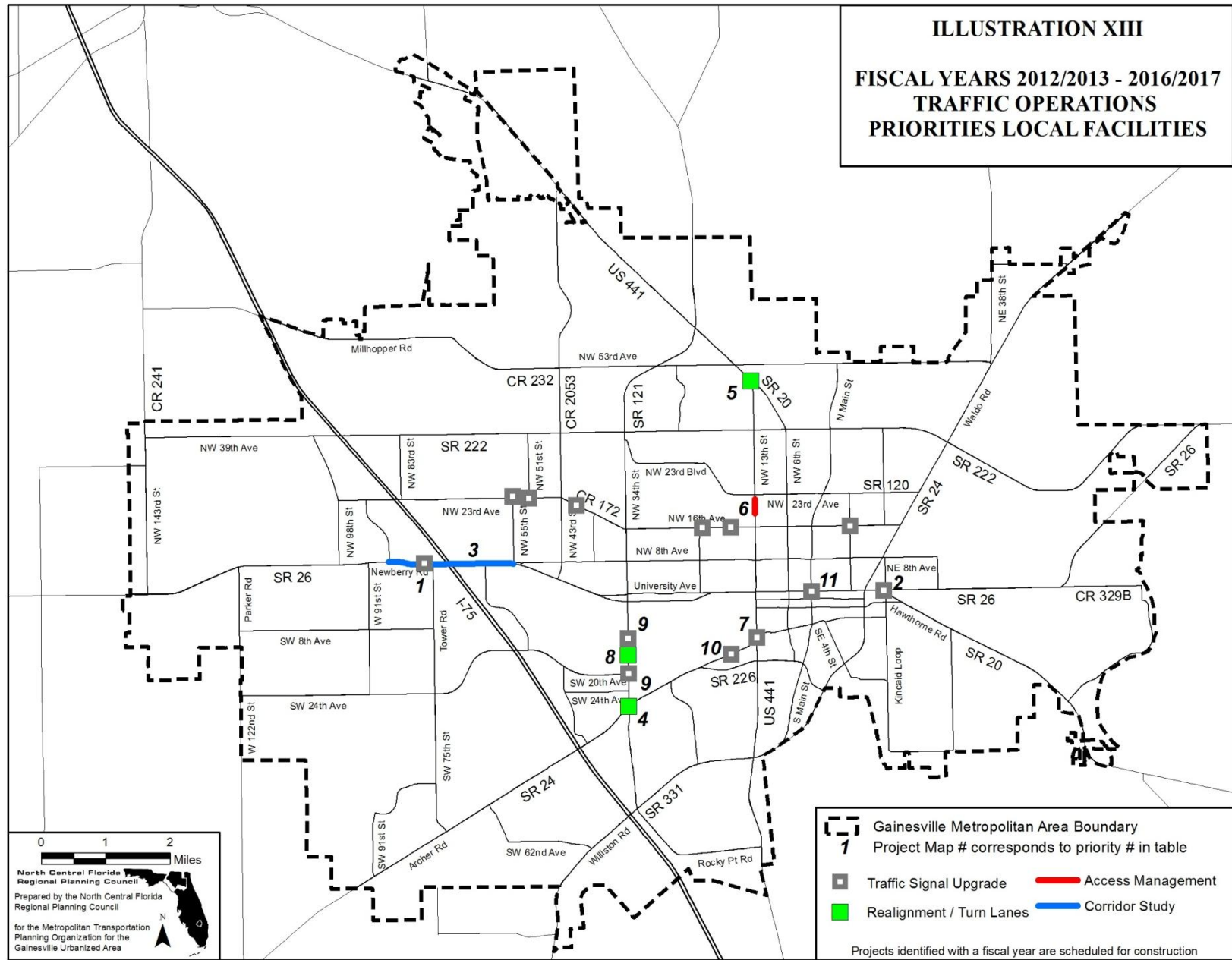
**TABLE 11**

**SURFACE TRANSPORTATION PROGRAM (STP) FUND PRIORITIES  
FISCAL YEARS 2012/2013 - 2016/2017  
(within the Gainesville Metropolitan Area)**

(Note: Projects in italic text are partially funded, as identified in the Transportation Improvement Program.)

<b>NUMBER</b>	<b>PROJECT</b>	<b>LOCATION</b>	<b>DESCRIPTION</b>
1	Oaks Mall to Airport Bus Rapid Transit (BRT) Alternatives Analysis	FM: Oaks Mall TO: Airport (via Archer Road and Downtown)	Conduct BRT Alternatives Analysis
2	Santa Fe to Oaks Mall BRT Feasibility Study and Alternatives Analysis	FM: Santa Fe TO: Oaks Mall	Conduct BRT Feasibility Study and Alternatives Analysis
3	Streetcar Feasibility Study	FM: Downtown TO: Butler Plaza (via University of Florida)	Conduct Streetcar feasibility study
4	Intermodal Center/Park-N-Ride Lot	AT: Ft. Clarke Boulevard/ Newberry Road area	Construct Intermodal Center/Park-N-Ride Lot
5	Transit Maintenance Facility	AT: Regional Transit System (RTS) location	Construct transit maintenance facility expansion- Phase 2 of 4
6	Transit Maintenance Facility	AT: RTS location	Construct transit maintenance facility expansion- Phase 3 of 4
7	Transit Maintenance Facility	AT: RTS location	Construct transit maintenance facility expansion- Phase 4 of 4

Initial STP Fund Priorities were developed by MTPO staff, based on the Year 2035 Long Range Transportation Plan Cost Feasible Plan projects



**TABLE 12A**

**TRAFFIC OPERATIONS PRIORITIES-  
STATE HIGHWAY SYSTEM (SHS) ONLY  
FISCAL YEARS 2012/2013 - 2016/2017  
(within the Gainesville Metropolitan Area)**

(Note: Projects in italic text are partially funded, as identified in the Transportation Improvement Program.)

<b>NUMBER</b>	<b>PROJECT</b>	<b>LOCATION</b>	<b>DESCRIPTION</b>
1	Newberry Road [SR 26]	AT: NW 76 Street	Reconstruction of traffic signal
2	University Avenue [SR 26]	AT: Hawthorne Road [SR 20]	Reconstruction of traffic signal
3	Newberry Road [SR 26]	FM: Ft Clarke Boulevard TO: NW 8 Avenue	Corridor study
4	SW 34 Street [SR 121]	AT: Archer Road [SR 24]	Add right turnlanes
5	NW 13 Street [US 441]	AT: NW 6 Street [SR 20]	Intersection realignment/construction/ signalization
6	NW 13 Street [US 441]	FM: 2100 block TO: 2200 block	Access management and pedestrian refuge islands
7 <i>Partially Funded*</i>	<i>SW 13 Street [US 441]</i>	<i>AT: Archer Road [SR 24]</i>	<i>Signal reconstruction and retaining wall modifications</i>
8	SW 34 Street [SR 121]	AT: Hull Road	Extend southbound left turnlane; install northbound right exclusive right turnlane variable message board
9	SW 34 Street [SR 121]	AT: Radio Road AT: SW 20 Avenue	Traffic signal replacement to address structural deficiency
10 <i>Partially Funded</i>	<i>Archer Road [SR 24]</i>	<i>AT: Center Drive/VA Entrance</i>	<i>Traffic signal replacement to address structural deficiency</i>
11	University Avenue [SR 26]	AT: W 3 Street, W 2 Street, W 1 Street, E 1 Street & E 3 Street	Replace five existing galvanized mast arms with MTPO-approved mast arms
12	Traffic Signal Upgrade- Non-SHS	At various intersections (see Table 12B)	Replace existing signal with horizontal mast arm signals

\* This project is partially funded with University of Florida Campus Development Agreement funds.

Initial Traffic Operations Priorities were developed by the City of Gainesville/Alachua County Traffic Operations Team.

**TABLE 12B**

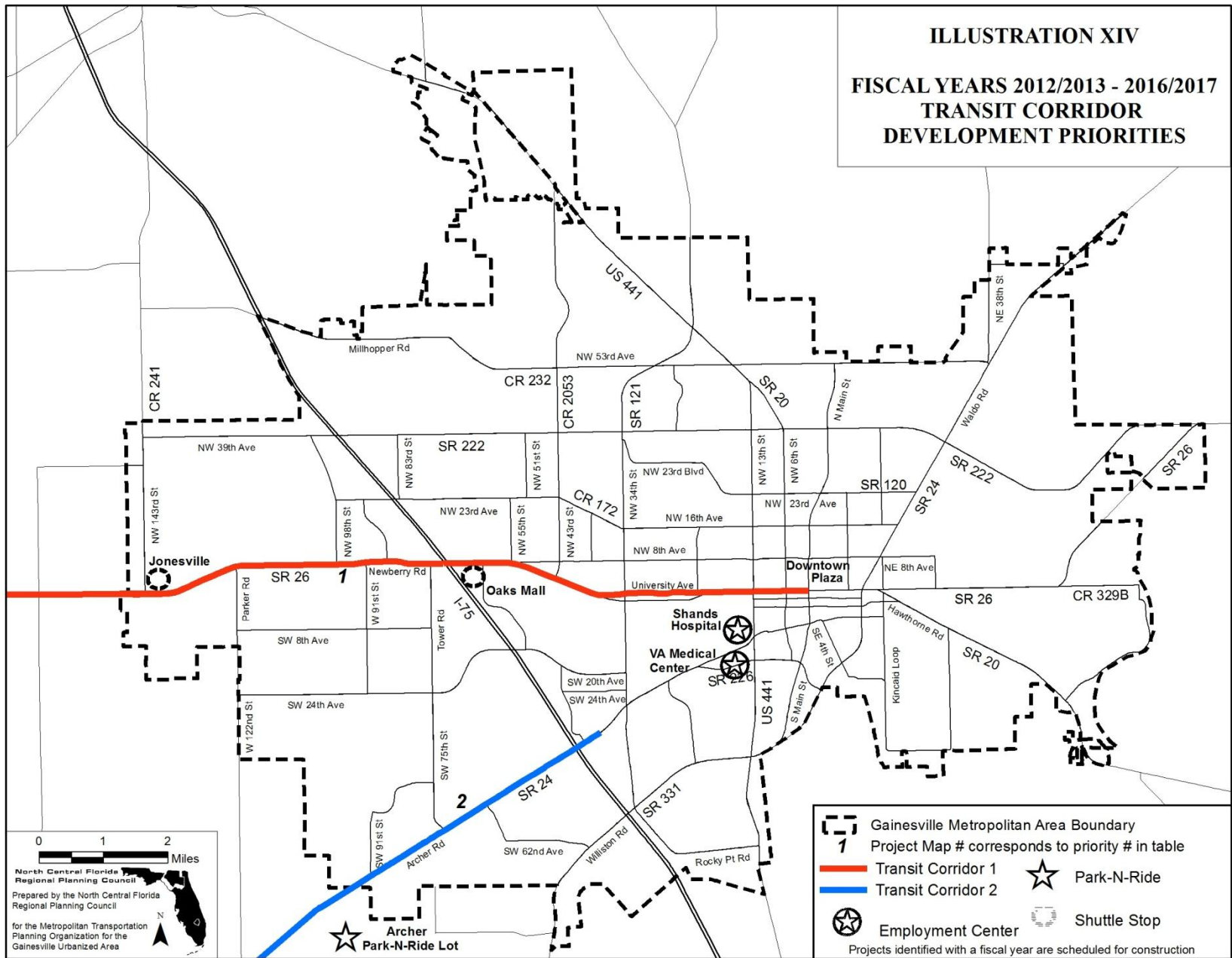
**TRAFFIC OPERATIONS PRIORITIES-  
LOCAL FACILITIES  
FISCAL YEARS 2012/2013 - 2016/2017  
(within the Gainesville Metropolitan Area)**

(Note: Projects in italic text are partially funded, as identified in the Transportation Improvement Program.)

<b>NUMBER</b>	<b>PROJECT</b>	<b>LOCATION</b>	<b>DESCRIPTION</b>
1	NE 16 Avenue	AT: NE 9 Street	Traffic signal reconstruction to mast arms
2	NW 16 Avenue	AT NW 2 Street	Traffic signal reconstruction to mast arms
3	NW 16 Avenue	AT: NW 16 Terrace	Traffic signal reconstruction to mast arms
4	NW 16 Avenue	AT: NW 22 Terrace	Traffic signal reconstruction to mast arms
5	NW 16 Boulevard	AT NW 41 Street	Traffic signal reconstruction to mast arms
6	NW 23 Avenue	AT: NW 51 Street	Traffic signal reconstruction to mast arms
7	NW 23 Avenue	AT: NW 55 Street	Traffic signal reconstruction to mast arms

Initial Traffic Operations Priorities were developed by the City of Gainesville/Alachua County Traffic Operations Team.

(page left blank intentionally)



**TABLE 13**

**TRANSIT CORRIDOR DEVELOPMENT PRIORITIES  
FISCAL YEARS 2012/2013 - 2016/2017  
(within the Gainesville Metropolitan Area)**

<b>NUMBER</b>	<b>PROJECT</b>	<b>LOCATION</b>	<b>DESCRIPTION</b>
1	Newberry Road [SR 26]	FM: City of Newberry TO: City of Gainesville	Express bus service from Newberry Road park-n-ride lot to the City of Gainesville
2	Archer Road [SR 24]	FM: City of Archer TO: Gainesville	Express bus service from Archer Road park-n-ride lot to the City of Gainesville

Initial Transit Corridor Development Priorities were developed by MTPO staff, based on the Regional Transit System Transit Development Plan.

**TABLE 14**

**TRANSPORTATION DISADVANTAGED PRIORITIES-  
TRANSPORTATION DISADVANTAGED TRUST FUND  
FISCAL YEARS 2012/2013 - 2016/2017  
(Alachua County Areas Outside of the Gainesville Metropolitan Area)**

<b>NUMBER</b>	<b>PROJECT</b>	<b>LOCATION</b>	<b>DESCRIPTION</b>
1	Provision of paratransit trips for vital medical purposes (dialysis, cancer care).	Areas outside of the Gainesville Metropolitan Area	Provide paratransit trips to eligible individuals with state TD Trust Funds.
2	Provision of paratransit trips for medical purposes (doctor appointments, pharmacy, physical therapy).	Areas outside of the Gainesville Metropolitan Area	Provide paratransit trips to eligible individuals with state TD Trust Funds.
3	Provision of paratransit trips for employment purposes.	Areas outside of the Gainesville Metropolitan Area	Provide paratransit trips to eligible individuals with state TD Trust Funds.
4	Provision of paratransit trips for shopping purposes.	Areas outside of the Gainesville Metropolitan Area	Provide paratransit trips to eligible individuals with state TD Trust Funds.
5	CTC <sup>1</sup> Paratransit Van Fleet Expansion- TD Trust Funds	Countywide	Purchase two lift-equipped paratransit vans each year with any TD Trust Funds remaining after all TD Trust Fund paratransit trip priorities have been fulfilled.

- Notes: 1. The grant funds allocated from the TD Trust Fund are for the specific purpose of purchasing passenger trips for non-sponsored transportation disadvantaged individuals, or for equipment to be utilized by a CTC. Twenty-five percent of the TD Trust Fund allocation may be spent to purchase capital equipment.
2. The Alachua County Transportation Disadvantaged Coordinating Board, in cooperation with the CTC, prioritize the use of the state TD Trust Funds. The current and past TD Trust Fund allocations are sufficient to provide trips under priorities 1 and 2 on a first come, first served basis.

Initial Transportation Disadvantaged Priorities were developed by the Alachua County Transportation Disadvantaged Coordinating Board.

<sup>1</sup> CTC- Community Transportation Coordinator

**TABLE 15**

**TRANSPORTATION DISADVANTAGED PRIORITIES-  
FEDERAL TRANSIT ADMINISTRATION SECTION 5310-  
CAPITAL FUNDING/EQUIPMENT PROGRAM  
FISCAL YEARS 2012/2013 - 2016/2017  
(Alachua Countywide)**

<b>NUMBER</b>	<b>PROJECT</b>	<b>LOCATION</b>	<b>DESCRIPTION</b>
1	RTS <sup>1</sup> Paratransit Van Fleet Expansion- Section 5310 funds	Countywide	Purchase a replacement vehicle to provide transportation for the elderly and disabled in Alachua County and the City of Gainesville
2*	Quality of Life Community Services Accessible Taxicab Fleet Expansion- Section 5310 funds	Countywide	Purchase accessible taxicab vehicles

Note: Capital expenditures shall be in accordance with U.S.C. Section 5310 funding eligibility criteria.

<sup>1</sup> RTS- Regional Transit System

\* In accordance with Chapter 427, Florida Statutes, the service provider (Quality of Life Community Services Taxicab) must execute a coordination agreement with the Alachua County Community Transportation Coordinator (MV Transportation) in order to receive these funds.

Initial Transportation Disadvantaged Priorities were developed by the Alachua County Transportation Disadvantaged Coordinating Board.

**TABLE 16**

**TRANSPORTATION DISADVANTAGED PRIORITIES-  
FEDERAL TRANSIT ADMINISTRATION SECTION 5311-  
NONURBANIZED AREA FORMULA PROGRAM  
FISCAL YEARS 2012/2013 - 2016/2017  
(Alachua County Areas Outside of the Gainesville Urbanized Area)**

<b>NUMBER</b>	<b>PROJECT</b>	<b>LOCATION</b>	<b>DESCRIPTION</b>
1	Provision of paratransit trips that cannot be provided with TD Trust Funds.	Areas outside of the Gainesville Urbanized Area	Maintain the fixed route between the Oaks mall and Santa Fe College in the unincorporated portions of the Gainesville Urbanized Area. Provide demand response service in the nonurbanized areas of Alachua County
2	RTS <sup>1</sup> Paratransit Van Fleet Expansion- Section 5311 funds	Countywide- Nonurbanized	Purchase two demand response vehicles

Note: Capital and operating expenditures shall be in accordance with U.S.C. Section 5311 funding eligibility criteria.

<sup>1</sup> RTS- Regional Transit System

Initial Transportation Disadvantaged Priorities were developed by the Alachua County Transportation Disadvantaged Coordinating Board.

**TABLE 17**

**TRANSPORTATION DISADVANTAGED PRIORITIES-  
FEDERAL TRANSIT ADMINISTRATION SECTION 5316-  
JOB ACCESS AND REVERSE COMMUTE PROGRAM  
FISCAL YEARS 2012/2013 - 2016/2017  
(Gainesville Metropolitan Area)**

<b>NUMBER</b>	<b>PROJECT</b>	<b>LOCATION</b>	<b>DESCRIPTION</b>
1	Job Access and Reverse Commute (JARC) Program	Areas within the Gainesville Metropolitan Area and outside the Regional Transit System fixed-route Americans with Disabilities Act (ADA) service area	Use FTA grant to provide job access and job-related transportation to TD-eligible individuals.

Initial Transportation Disadvantaged Priorities were developed by the Alachua County Transportation Disadvantaged Coordinating Board.

**TABLE 18**

**TRANSPORTATION DISADVANTAGED PRIORITIES-  
FEDERAL TRANSIT ADMINISTRATION SECTION 5317-  
NEW FREEDOM PROGRAM  
FISCAL YEARS 2012/2013 - 2016/2017  
(Gainesville Metropolitan Area/Alachua County)**

<b>NUMBER</b>	<b>PROJECT</b>	<b>LOCATION</b>	<b>DESCRIPTION</b>
1	New Freedom Program	Areas within the Gainesville Metropolitan Area and outside the Regional Transit System fixed-route Americans with Disabilities Act (ADA) service area	Use FTA grant to provide paratransit service to disabled citizens
2	Regional Transit System Capital Purchase of Replacement Paratransit Vehicle	Countywide	Purchase replacement paratransit vehicle to provide transportation to the elderly and disabled in Alachua County and the City of Gainesville
3*	Quality of Life Community Services Taxicab Operating Capital- Section 5317 funds	Countywide	Operating subsidies for transportation disadvantaged persons needing taxicab service

\* In accordance with Chapter 427, Florida Statutes, the service provider (Quality of Life Community Services Taxicab) must execute a coordination agreement with the Alachua County Community Transportation Coordinator (MV Transportation) in order to receive these funds.

Initial Transportation Disadvantaged Priorities were developed by the Alachua County Transportation Disadvantaged Coordinating Board.

(page left blank intentionally)



**TABLE 19**

**TRANSPORTATION REGIONAL INCENTIVE PROGRAM (TRIP) PRIORITIES  
FISCAL YEARS 2012/2013 - 2016/2017  
(within the Gainesville Metropolitan Area)**

(Note: Projects in italic text are partially funded, as identified in the Transportation Improvement Program.)

<b>NUMBER</b>	<b>PROJECT</b>	<b>LOCATION</b>	<b>DESCRIPTION</b>
1	SW 62 Connector	FM: Williston Road [SR 331] TO: Newberry Road [SR 26]	SW 62 Boulevard extension project, including extension of SW 40 Boulevard south to SW 34 Street, extending it east to connect at Williston Road – regionally significant project: 1. would alleviate congestion along Interstate-75 between Newberry Road and Williston Road, and other state roads such as Archer Road [SR 24], SW 34 Street [SR 121], Newberry Road [SR 26]; 2. improve system connectivity; and 3. add roadway capacity.
2	Archer Road	FM: Levy Countyline TO: Tower Road	Reconstruct as a 4-lane facility

Initial TRIP Priorities were developed by MTPO staff, based Alachua County and City of Gainesville Comprehensive Plan Transportation Elements.

(page left blank intentionally)

## **APPENDIX A**

### **TRANSPORTATION PLANS AND PROGRAMS- EIGHT METROPOLITAN PLANNING FACTORS TO BE CONSIDERED**

The following is a listing of the factors to be considered in the Safe, Accountable, Flexible, Efficient Transportation Equity Act: A Legacy for Users (SAFETEA-LU) that was enacted August 10, 2005 as Public Law 109-59. As required by SAFETEA-LU, these factors are being addressed in the development of transportation plans and programs.

**FACTOR 1** The metropolitan transportation planning process shall provide for consideration of projects and strategies that will support the economic vitality of the metropolitan area, especially by enabling global competitiveness, productivity, and efficiency;

**FACTOR 2** The metropolitan transportation planning process shall provide for consideration of projects and strategies that will increase the safety of the transportation system for motorized and nonmotorized users;

**FACTOR 3** The metropolitan transportation planning process shall provide for consideration of projects and strategies that will increase the security of the transportation system for motorized and nonmotorized users;

**FACTOR 4** The metropolitan transportation planning process shall provide for consideration of projects and strategies that will increase the accessibility and mobility options available to people and for freight;

**FACTOR 5** The metropolitan transportation planning process shall provide for consideration of projects and strategies that will protect and enhance the environment, promote energy conservation, and improve quality of life;

**FACTOR 6** The metropolitan transportation planning process shall provide for consideration of projects and strategies that will enhance the integration and connectivity of the transportation system, across and between modes, for people and freight;

**FACTOR 7** The metropolitan transportation planning process shall provide for consideration of projects and strategies that will promote efficient system management and operation; and

**FACTOR 8** The metropolitan transportation planning process shall provide for consideration of projects and strategies that will emphasize the preservation of the existing transportation system.

(Page left blank intentionally)

## **APPENDIX B**

### **ROADS OPERATING AT AN UNACCEPTABLE HIGHWAY LEVEL OF SERVICE**

(page left blank intentionally)

**ROADS OPERATING AT AN UNACCEPTABLE HIGHWAY LEVEL OF SERVICE  
GAINESVILLE METROPOLITAN AREA, 2009  
[does not include reserve trips]**

ROADWAY FACILITY	FROM	TO	2009 AADT	2009 LOS	2008 MSV	2009 MSV
SW 13 <sup>TH</sup> ST. [US 441] (S-3)	ARCHER RD.	UNIVERSITY AVE.	34,500	F	28,200	28,200
NW 13 <sup>TH</sup> ST [US 441]. (S-4)	UNIVERSITY AVE.	NW 29 <sup>TH</sup> RD.	31,500	F	28,200	28,200
NEWBERRY ROAD [SR 26] (S-14)	NW 122 <sup>ND</sup> ST.	INTERSTATE 75 (West Ramp)	37,250	F	35,500	35,500
NEWBERRY ROAD [SR 26] (S-15)	INTERSTATE 75 (West Ramp)	NW 8 <sup>TH</sup> AVENUE	49,500	F	43,700	43,700
SW 2 <sup>ND</sup> AVE. [SR 26A] (S-21)	NEWBERRY RD.	SW 34 <sup>TH</sup> ST.	15,200	E	12,495	12,495
NW 34 <sup>TH</sup> ST. [SR 121] (S-25)	UNIVERSITY AVE.	NW 16 <sup>TH</sup> AVE.	18,750	F	15,960	15,960
ARCHER RD. [SR 24] (S-47)	GMA BOUNDARY	SW 75 <sup>TH</sup> ST.	19,000	E	15,960	15,960
ARCHER RD. [SR 24] (S-55)	SW 34 <sup>TH</sup> ST.	SW 16 <sup>TH</sup> AVE.	51,250	F	50,300	50,300
NW 23 <sup>RD</sup> AVENUE (A-9)	NW 98 <sup>TH</sup> ST.	NW 55 <sup>TH</sup> ST.	16,815	F	15,675	15,675
SW 20 <sup>TH</sup> AVE. (A-15)	SW 75 <sup>TH</sup> ST.	SW 62 <sup>ND</sup> BD.	15,866	F	15,675	15,675
SW 20 <sup>TH</sup> AVE. (A-16)	SW 62 <sup>ND</sup> BD.	SW 34 <sup>TH</sup> ST.	21,524	F	15,675	15,675
N MAIN ST. (A-18)	NW 23 <sup>RD</sup> AVE.	NW 39 <sup>TH</sup> AVE.	11,562	E	11,550	11,550
NW 83 <sup>RD</sup> ST. (A-23)	NW 23 <sup>RD</sup> AVE.	NW 39 <sup>TH</sup> AVE.	13,851	E	13,680	13,680
RADIO RD./MUSEUM DR. (G-32)	SW 34 <sup>TH</sup> ST.	SW 13 <sup>TH</sup> ST.	13,621	F	11,260	11,260
GALE LEMERAND DR. (G-39)	MUSEUM DR.	UNIVERSITY AVE.	12,368	F	10,530	10,530

# Maximum service volume (MSV) for LOS D is not attainable (NA).

\* Roadway is within the City of Gainesville Transportation Concurrency Exception Area (TCEA).

(page left blank intentionally)

## APPENDIX C

### YEAR 2035 LIVABLE COMMUNITY REINVESTMENT PLAN (GAINESVILLE METROPOLITAN AREA)

**TABLE 1**

#### **YEAR 2035 BICYCLE/PEDESTRIAN COST FEASIBLE PLAN**

<b>SEGMENT PRIORITY</b>	<b>DESCRIPTION</b>	<b>FROM/TO</b>	<b>LENGTH (IN MILES)</b>	<b>ESTIMATED COST IN MILLIONS (2007 DOLLARS)</b>
<b>Surface Transportation Program (STP) Enhancements</b> ( <i>Cost Feasible Plan Revenues = \$11.5 million</i> )				
B-1	Cross Campus Greenway	Archer Road to SW 34 Street	2.1	\$1.9
B-2	Hull Road Parking Area	SW 34 Street to End of Hull Road Parking Area	0.2	\$0.2
B-3	Hull Road Connector	Hull Road Parking Area/SW 20 Avenue	0.5	\$0.5
B-4	Lake Kanapaha Trail	Tower Road west to Interstate 75	2.3	\$2.1
B-5	SW 34 Street Grade Separated Crossing	SW 34 Street at Hull Road	0.2	\$7.0
<b>TOTAL STP ENHANCEMENT FUNDED PROJECTS</b>				<b>\$11.7</b>
<b>LOCAL FUNDS</b>				
<b>Alachua County Projects (identified as Cost Feasible by Year 2020)</b>				
NA	SW 8 Avenue multi-use offroad facility	SW 122 Street to SW 91 Street	2.0	\$0.4
NA	NW 98 Street multi-use offroad facility	NW 23 Avenue to NW 39 Avenue	1.0	\$0.3
<b>TOTAL ALACHUA COUNTY PROJECTS</b>				<b>\$0.7</b>
<b>LOCAL FUNDS</b>				
<b>City of Gainesville Projects (identified as Cost Feasible by Year 2015)</b>				
NA	SW 35 Place sidewalk	SW 34 Street to SW 23 Terrace	1.1	\$0.5
<b>TOTAL CITY OF GAINESVILLE PROJECTS</b>				<b>\$0.5</b>
<b>GRAND TOTAL BICYCLE/PEDESTRIAN PROJECTS</b>				<b>\$12.9</b>

NA- Not applicable

**TABLE 2**

**YEAR 2035 ROADWAY COST FEASIBLE PLAN**

<b>PRIORITY</b>	<b>DESCRIPTION</b>	<b>FROM/TO</b>	<b>LENGTH (IN MILES)</b>	<b>ESTIMATED COST IN MILLIONS (IN 2010 DOLLARS)</b>
<b>STRATEGIC INTERMODAL SYSTEM (SIS) (<i>Cost Feasible Plan Revenues = \$6.4 million</i>)</b>				
-	<b>Interstate 75 Interchange Modifications</b>	At Williston Road At Archer Road At Newberry Road At NW 39 Ave	-	\$6.4
<b>TOTAL STRATEGIC INTERMODAL SYSTEM</b>				<b>\$6.4</b>
<b>STATE HIGHWAY SYSTEM (<i>Cost Feasible Plan Revenues = \$92.0 million year of expenditure dollars</i>)</b>				
S-1	<b>State Road 226 (SE 16 Avenue)</b> widen to four lanes	Main Street to Williston Road	0.6	\$15.0
S-2	<b>State Road 121 (NW 34 Street)-</b> construction of turnlanes to improve safety and traffic flow	NW 16 Avenue to US 441	3.5	\$6.0
S-3	<b>State Road 26 (University Avenue) Multimodal Emphasis Corridor Study</b> (see footnote <sup>a</sup> )	Gale Lemerand Drive to Waldo Road	1.5	\$4.75
S-4	<b>US 441 (W. 13 Street) Multimodal Emphasis Corridor Study</b> (see footnote <sup>a</sup> )	NW 33 Avenue to Archer Road	2.8	\$4.75
S-5	<b>Waldo Road Multiway Boulevard</b> redesign to support bus rapid transit, multi-trail and corridor redevelopment study (PD&E) (see footnote <sup>b</sup> )	University Avenue to NE 39 Avenue	2.5	\$3.0
S-6	<b>Bus Rapid Transit (BRT) Corridor Infrastructure- Partial</b>	Santa Fe Village to Gainesville Regional Airport	14.0	\$28.0
7	<b>State Road 24 (Archer Road) BRT</b> Dedicated Lane(s) design, additional roadway capacity and corridor management study (PD&E)	MTPO Boundary to SW 45 Street	3.5	\$0.5
8	<b>State Road 121 (Williston Road)</b> additional roadway capacity and corridor management study (PD&E)	SW 62 Avenue to SW 35 Way	0.5	\$0.5
<b>TOTAL STATE HIGHWAY SYSTEM</b>				<b>\$62.5</b>

**TABLE 2 (Continued)****YEAR 2035 ROADWAY COST FEASIBLE PLAN**

<b>PRIORITY</b>	<b>DESCRIPTION</b>	<b>FROM/TO</b>	<b>LENGTH (IN MILES)</b>	<b>ESTIMATED COST (IN MILLIONS)</b>
<b>Alachua County Transit and Roadway Projects (local funds identified as Cost Feasible by the Year 2020)</b>				
1	<b>SW 20 Avenue</b> , four laning and multi-use path	SW 52 Blvd to SW 61 Blvd	0.5	\$8.8
2	<b>SW 8 Avenue-Phase 2</b> , two lane roadway and multi-use path	SW 122 Street to SW 143 Street	0.7	\$2.7
3	<b>NW 23 Avenue</b> , four laning and resurfacing	NW 51 Street to NW 59 Terrace	0.7	\$1.8
4	<b>NW 23 Avenue</b> , four laning	NW 83 Street to Ft. Clarke Blvd.	0.5	\$12.0
5	<b>SE 43 Street</b> , construction of two-way left turn lanes, multi-use path and signalization	SR 26 (University Avenue) to SR 20 (Hawthorne Road)	1.1	\$0.9
6	<b>SW 45 / 47 Street</b> , new roadway with travel lanes, BRT Dedicated Transit Lanes and multi-use path	Archer Road to SW 30 Avenue	0.8	\$4.5
7	<b>SW 30 Avenue</b> , new Interstate 75 overpass with travel lanes, BRT Dedicated Transit Lanes and the Archer Braid Trail	SW 43 Street to SW 47 Street	0.5	\$13.0
8	<b>NW 83 Street</b> , new roadway with travel lanes, BRT Dedicated Transit Lanes and the Millhopper Greenway	NW 46 Avenue to NW 39 Avenue (SR 222)	0.4	\$2.5
9	<b>NW 83 Street</b> , BRT Dedicated Transit Lanes	NW 23 Avenue to NW 39 Avenue	1.0	\$7.8
10	<b>Ft. Clarke/NW 83 Street Corridor</b> , BRT Dedicated Transit Lanes & new multi-modal only Interstate 75 overpass	NW 23 Avenue to Newberry Road (SR 26)	1.0	\$14.0

**TABLE 2 (Continued)****YEAR 2035 ROADWAY COST FEASIBLE PLAN**

<b>PRIORITY</b>	<b>DESCRIPTION</b>	<b>FROM/TO</b>	<b>LENGTH (IN MILES)</b>	<b>ESTIMATED COST (IN MILLIONS)</b>
11	NW 46 Avenue , new roadway with travel lanes, BRT Dedicated Transit Lanes, multi-use path and new Interstate 75 overpass	NW 83 Street to NW 98 Street	1.3	\$15.5
<b>TOTAL ALACHUA COUNTY TRANSIT AND ROADWAY SYSTEM</b>				<b>\$83.5</b>
<b>City of Gainesville Projects (local funds identified as Cost Feasible by the Year 2020)</b>				
N/A	SE 4 Street- Phase 2 reconstruction	Williston Road to Depot Avenue	0.7	\$2.3
N/A	SW 62 Boulevard-four lanes plus two additional BRT lanes in the middle	Newberry Road to Archer Road	3.2	\$111.0
<b>TOTAL CITY OF GAINESVILLE ROADWAY SYSTEM</b>				<b>\$113.3</b>
<b>GRAND TOTAL COMBINED ROADWAY SYSTEMS</b>				<b>\$265.7</b>

<sup>a</sup>Multimodal corridors are defined as major transportation facilities which accommodate automobile, truck, bus, bicycle and pedestrian travel and link different modes together, such as bikes on buses, car and walk and/or park and ride. These projects employ policies and design elements that ensure that the safety and convenience of all users of a transportation system are considered in all phases of project planning and development. Typical elements of a multimodal corridor include sidewalks, bicycle lanes (or wide, paved shoulders), shared-use bicycle and pedestrian paths, designated bus lanes, safe and accessible transit stops and frequent and safe crossings for pedestrians, including median islands, accessible pedestrian signals, and curb extensions. These projects do not include lane reductions.

<sup>b</sup>Waldo Road Multiway Boulevard includes the reconstruction of the Waldo Road Corridor to support commercial and residential redevelopment and enhanced pedestrian crossings to the proposed Waldo Road Bus Rapid Transit line.

*Note- Estimated costs are shown in Year 2010 dollars, except for the Strategic Intermodal System project that is shown in Year 2009 dollars.*

**TABLE 3**

**YEAR 2035 TRANSIT COST FEASIBLE PLAN**

<b>PROJECT PRIORITY</b>	<b>DESCRIPTION</b>	<b>FROM/TO</b>	<b>LENGTH (IN MILES)</b>	<b>ESTIMATED COST IN MILLIONS (2010 DOLLARS)</b>
<b>Transit</b> ( <i>Cost Feasible Plan Revenues = \$3.7 million</i> )				
T-1	Transit Maintenance Facility	Not Applicable (NA)	NA	\$50.0
<b>TOTAL</b>				<b>\$50.0</b>

<b>Surface Transportation Program</b> ( <i>Cost Feasible Plan Revenues = \$36.1 million</i> )				
F-1	Oaks Mall to Airport Bus Rapid Transit Alternatives Analysis	Oaks Mall to Airport (via Archer Road and Downtown)	NA	\$0.4
F-2	Santa Fe to Oaks Mall Bus Rapid Transit Feasibility Study and Alternatives Analysis	Santa Fe to Oaks Mall	NA	\$0.6
F-3	Streetcar Feasibility Study	Downtown to Butler Plaza via University of Florida	9.0 (One-way)	\$1.0
F-4	Intermodal Center/Park and Ride Lot	(location to be determined)	NA	\$1.4
F-5	Transit Maintenance Facility	NA	NA	\$50.0
<b>TOTAL</b>				<b>\$53.4</b>

## YEAR 2035 COST FEASIBLE PLAN

### INTELLIGENT TRANSPORTATION SYSTEM (ITS) APPENDIX

PROJECT PRIORITY	PROJECT NAME	DESCRIPTION	ESTIMATED COST (2010 DOLLARS)
1	<p><b><u>Interstate 75 Intelligent Transportation System Corridor</u></b></p> <p>Marion County line to Columbia County Line</p>	<p>A. Add Dynamic Message Signs (DMS) to alert motorists of traffic conditions and travel times.</p> <p>B. Add pan-tilt-zoom traffic surveillance cameras for active traffic management of the freeway. This will allow operators at the Gainesville Traffic Management Center (TMC) to alert motorists of existing conditions using the Dynamic Message Signs and the 511 information hotline.</p> <p>C. Add traffic detection technology so automated alerts can be sent to Gainesville Traffic Management Center (TMC) operators when highway speeds drop below a certain threshold as well as for highway traffic studies and travel time collection.</p>	\$9,900,000
2	<p><b><u>Regional Transportation System Bus Priority System</u></b></p> <p>Adding signal priority to heavily used bus routes for University of Florida students will make those routes more reliable, thus resulting in higher passenger capacity and fewer vehicles on the road.</p>	<p>A. <b><u>Route #9</u></b>  <b><u>State Road 24 (Archer Road)</u></b> from SW 23 Terrace to SW 23 Drive  <b><u>State Road 331 (Williston Road)</u></b> from SW 25 Terrace to SW 23 Street</p> <p>B. <b><u>Route # 20</u></b>  <b><u>State Road 121 (SW 34 Street)</u></b> from Hull Road to SW 20 Avenue</p> <p>C. <b><u>Route# 21</u></b>  <b><u>State Road 121 (SW 34 Street)</u></b> from Hull Road to SW 20 Avenue</p> <p>D. <b><u>Route #35</u></b>  <b><u>State Road 24 (Archer Road)</u></b> from SW 23 Terrace to State Road 226 (SW 2 Avenue)  <b><u>State Road 226 (SW 16 Avenue)</u></b> from State Road 24 (Archer Road) to Shealy Drive  <b><u>State Road 12 (SW 34th Street)</u></b> from SW 35 Place to State Road 226 (SW 16 Avenue)  <b><u>State Road 226 (SW 16 Avenue)</u></b> from State Road 121 (SW 34 Street) to SW 23 Street</p>	\$600,000

## YEAR 2035 COST FEASIBLE PLAN

### INTELLIGENT TRANSPORTATION SYSTEM (ITS) APPENDIX (Continued)

PROJECT PRIORITY	PROJECT NAME	DESCRIPTION	ESTIMATED COST (2010 DOLLARS)
3	<p><b><u>Dynamic Message Signs on State Highway Arterials</u></b></p> <p>Dynamic message on the arterials will alert drivers of existing traffic conditions, alternate routes, detour routes in the event Interstate 75 is shut down, and travel times.</p>	<p>A. State Road 121 (SW 34 Street) @ SW 20 Avenue (Southbound)</p> <p>B. State Road 121 (SW 34 Street) @ State Road 331 (Eastbound)</p> <p>C. State Road 25 (W 13 Steet) @ State Road 26 (W University Avenue)</p> <p>D. State Road 25 (NW 13 Street) @ State Road 222 (NW 39 Avenue) (Westbound)</p> <p>E. State Road 25 (NW 13 Street) @ State Road 222 (NW 39 Avenue) (Northbound)</p> <p>F. State Road 222 (NW 39 Avenue) @ State Road 93 (Eastbound)</p>	\$700,000
4	<p><b><u>Expand Automated Arterial Travel Time System</u></b></p> <p>Expanding the Arterial Travel Time System will provide motorists with more real time information via Google maps or Dynamic Message Signs for actual travel times to various spots in the urban area. Motorists may be able to make a different route choice based on the information they receive. The travel times can also be used for traffic studies to measure development related impacts.</p>	<p>A. <b><u>State Road 25 (NW 13 Avenue)</u></b> State Road 222 (NW 39 Avenue) to State Road 331 (Williston Road)</p> <p>B. <b><u>State Road 121 (SW 34 Street)</u></b> NW 16 Avenue to State Road 93 (Interstate 75) Southbound Ramp</p>	\$600,000
5	<p><b><u>Travel Demand Management</u></b></p> <p>Information technologies project that addresses travel demand strategies, such as high occupancy vehicle (HOV) lanes, high occupancy toll (HOT) lanes and other travel demand management technologies.</p>	Gainesville Metropolitan Areawide	(to be determined)
<b>GRAND TOTAL INTELLIGENT TRANSPORTATION SYSTEM PROJECTS</b>			<b>\$11,800,000</b>

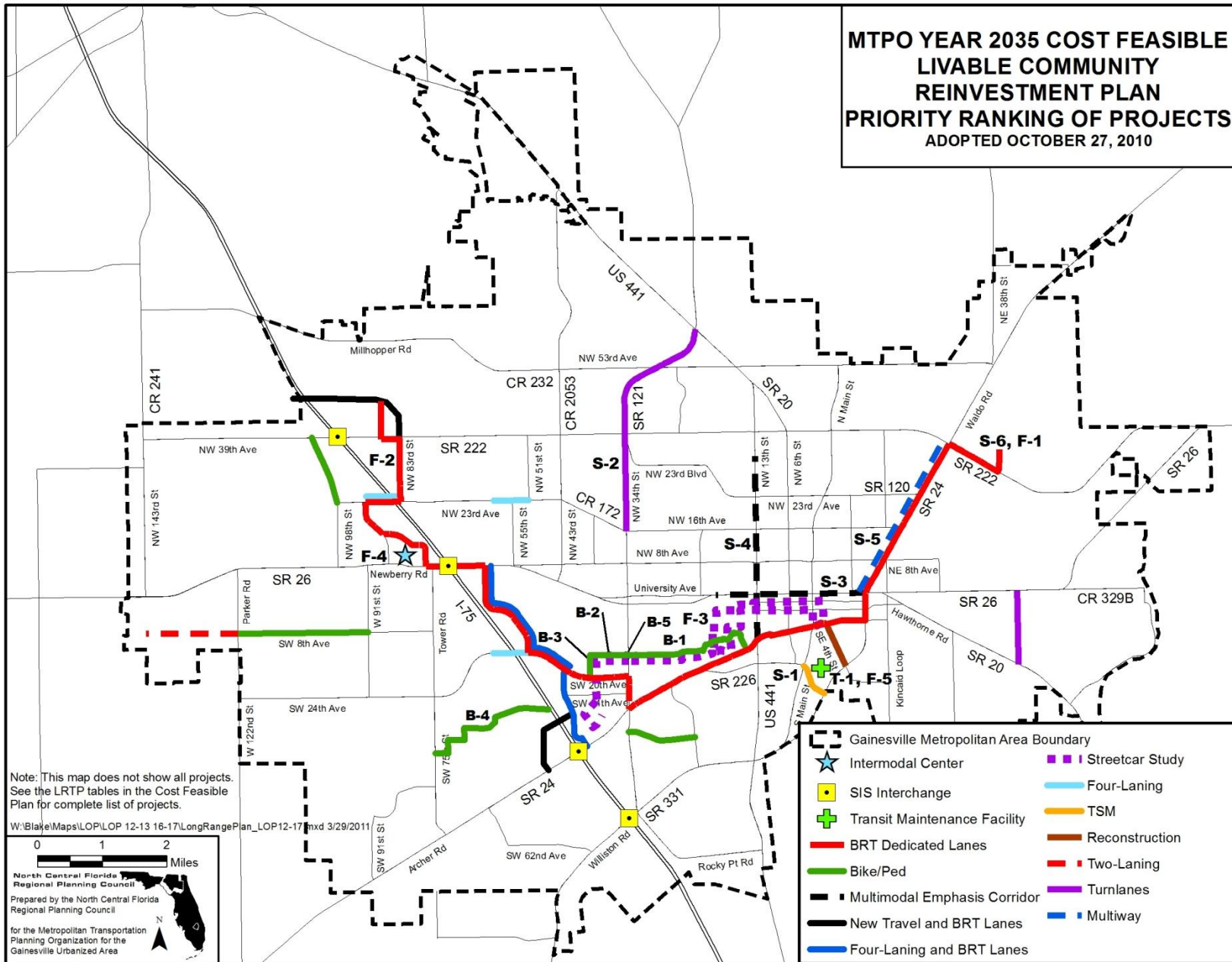
NA- Not applicable

## YEAR 2035 LONG RANGE TRANSPORTATION PLAN

### EXISTING PLUS COMMITTED (E+C) CAPACITY PROJECTS APPENDIX

FACILITY/LOCATION	TYPE	FISCAL YEAR	SOURCE
I-75 at SR 26 (W Newberry Road) (SE quadrant of interchange only)	Interchange Modification/Operational Improvement	2011	FDOT WP
SE 4 Street from Williston Road to Depot Avenue- Phase 1	Reconstruction- Design & Right-of-Way	2014	MTPO - TIP
SW 8 Avenue to SW 20 Avenue: Connection of SW 8 Avenue to SW 61 Street	New Road Connection - SW 8 Ave to SW 61 St	2012	MTPO - TIP
SW 8 Ave from SW 122 Street to SW 143 Street- Phase 1	New Roadways/2 lane reconstruction	2015	Alachua County CIP
SR 121 (NW 34 Street/NW 22 Street) from NW 58 Avenue to NW 67 Place	4-laning	2015	City of Gainesville
SR 226 (SE 16 Avenue) from Main Street to Williston Road	4-laning- Preliminary Engineering	2013	MTPO - TIP
SR 329 (Main Street) from Depot Avenue to NW 8 Avenue	Road Diet - Resurface/Reduce from 4 lanes to 2 lanes with center turn lane	under construction	FDOT WP
SR 329 (Main Street) from NW 8 Ave to NW 16 Avenue	Road Diet - Resurface/Reduce from 4 lanes to 2 lanes with center turn lane	under construction	Alachua County budget
SW 40 Boulevard Extension to SW 47 Avenue	New 2-lane roadway	2014	Gainesville CIP
Depot Avenue from US 441/SR 25/SW 13 Street to Williston Road	Reconstruction	2012	FDOT WP; Gainesville CIP
SW 6 Street from SW 4 Avenue to University Avenue	Reconstruction	2012	Gainesville CIP

**MTPO YEAR 2035 COST FEASIBLE  
LIVABLE COMMUNITY  
REINVESTMENT PLAN  
PRIORITY RANKING OF PROJECTS  
ADOPTED OCTOBER 27, 2010**



(page left blank intentionally)

## **APPENDIX D**

### **REGIONAL TRANSIT SYSTEM SUPPLEMENTAL INFORMATION**

(page left blank intentionally)

**FISCAL YEARS 2012/2013 - 2016/2017**  
**PUBLIC TRANSPORTATION PRIORITIES**  
**SUPPLEMENTAL INFORMATION**  
**PRIORITY 4 AND 5 PROJECTS**

<b>PROJECT</b>	<b>LOCATION</b>	<b>DESCRIPTION</b>
<b>PRIORITY 6 EXISTING ROUTE SERVICE ENHANCEMENTS</b>		
Enhance bus service via N 23 Avenue	RTS Route 10	Increase fixed-route service to 40 minutes
Enhance bus service via W 43 Street	RTS Route 43	Increase fixed-route service to 30 minutes
Enhance bus service via Archer Road	RTS Routes 1, 8 & 11	Extend fixed-route hours to 11:00 pm
Enhance bus service for southeast and northwest areas	RTS Routes 6 & 11	Increase fixed-route service to 30 minutes
Enhance bus service for southeast and northeast areas	RTS Routes 2 & 24	Increase fixed-route service to 30 minutes
Enhance Saturday service	RTS Routes 14, 75, 400, 402, 403, 404, 405, 406, 409 & 410	Extend fixed-route service to 7:58 pm
Enhance bus service via Archer Road and Tower Road	RTS Route 75	Increase fixed-route service to 35 minutes; extend Saturday fixed-route service to 7:58 pm; add Sunday fixed-route service; and increase weekend fixed-route service to 45 minutes
Enhance bus service for southeast area	RTS Route 7	Increase fixed-route service to 30 minutes
Enhance Sunday service	RTS Route 410	Add Sunday fixed-route service
<b>PRIORITY 7 NEW TRANSIT ROUTES</b>		
Enhance bus service via Fort Clarke Boulevard	RTS Route 23	Implement new route to provide service from the Oaks Mall to SFC
Enhance bus service from Urban Core to Airport Area	RTS Route 25	Implement new route to provide service from the University of Florida to the Airport Area
Enhance bus service via W 62 Boulevard and N 23 Avenue	RTS Route 62	Implement new route to provide service from Oaks Mall to Butler Plaza
Enhance bus service within Urban Core	RTS Route 46	Implement new circulator route to provide service between downtown and the University of Florida
Enhance bus service via N 39 Avenue	RTS Route 39	Implement new route to provide service from Spring Hill Development to Gainesville Regional Airport
Enhance bus service for southwest and northwest areas	RTS Route 44	Implement new route to provide service from Shands to Hunters Crossing

(page left blank intentionally)

## **APPENDIX E**

### **SAFETY PROJECT**

#### **SUPPLEMENTAL MATERIAL**

[There is no Safety Project Supplemental Material in Year 2010.]

(page left blank intentionally)

**APPENDIX F**

**FEDERAL FUNDS OBLIGATION PROJECT LIST**

**FISCAL YEAR 2009**

**[10/01/2008 - 09/30/2009]**

(page left blank intentionally)

10/04/10 10.43.52

PAGE: 1

FLORIDA DEPARTMENT OF TRANSPORTATION  
=====

FEDERAL OBLIGATIONS REPORT
INPUT SELECTION

-----

FEDERAL FISCAL YEAR = 2010 (10/01/2009 - 09/30/2010)

SORT = S (BY ITEM)

DISTRICT/COUNTY/STATEWIDE = GAINESVILLE MTP0

10/04/10  
10.43.52  
GAINESVILLE MTPO

FLORIDA DEPARTMENT OF TRANSPORTATION  
FEDERAL OBLIGATIONS - PROJECT DETAIL  
FFY 2010 (10/01/2009 - 09/30/2010)

PAGE 1  
FPMOBL10 (A)

\*\*\*\*\*  
\*\*HIGHWAYS\*\*  
\*\*\*\*\*

ITEM NO	DESCRIPTION	OLD ITEM							
COUNTY	RDWY ID	PROJ LGTH	FAC	TYPE OF WORK	EXIST/IMPROVE/ADD (LANES)	PRELIMINARY	RIGHT-OF-WAY	RAILROADS & UTILITIES	GRANTS & MISC.
FEDERAL AID NUMBER					FUND	ENGINEERING		CONSTRUCTION	
2073552	SR 20								
FROM SR 24 TO SE 14TH ST.									
ALACHUA				RESURFACING					
26080000	.182 MI			3	3	0			
3761 036 P					SL	0	0	58,986	0
2077564	SR 200 (US 301)								
FROM NE 76TH PLACE TO SR 24									
ALACHUA				RESURFACING					
26060000	5.965 MI			2	2	0			
ARRA 637 B					FSF1	0	0	3,741,863	0
2078123	SR 121 / GAINESVILLE								
NEAR SR 25 REBUILD X-ING				RR#625952-L					
ALACHUA				RAILROAD CROSSING					
26100000	.020 MI			2	0	0			
3231 022 P					ACSA	0	0	254,000	0
2078378	SR 24 (ARCHER ROAD)								
FROM SW 40TH BLVD TO SR 121 (SW 34TH ST.)									
ALACHUA				SAFETY PROJECT					
26090000	.949 MI			6	0	0			
3761 037 P					HSP	0	0	749,961	0
2113653	SW 62ND BLVD.								
4-LANE ARTERIAL CONNECTOR									
ALACHUA				PRELIMINARY ENGINEERING					
26000094	1.516 MI			4	0	0			
S124 002 R					EB	3,000	0	0	0
2113655	SW 62ND BLVD.								
4 LANE ARTERIAL CONNECTOR									
ALACHUA				TRAFFIC OPS IMPROVEMENT					
26000094	1.516 MI			4	0	0	0	0	0
SFT2 247 R					HPP	0	0	0	0
S117 003 R					EB	0	0	134,753	0
				** ITEM TOTALS **		0	0	134,753	0

10/04/10  
10.43.52  
GAINESVILLE MTPO

FLORIDA DEPARTMENT OF TRANSPORTATION  
FEDERAL OBLIGATIONS - PROJECT DETAIL  
FFY 2010 (10/01/2009 - 09/30/2010)

PAGE 2  
FPMOBL10 (A)

\*\*\*\*\*  
\*\*HIGHWAYS\*\*  
\*\*\*\*\*

ITEM NO	DESCRIPTION	OLD ITEM							
COUNTY	RDWY ID PROJ LGTH	TYPE OF WORK	EXIST/IMPROVE/ADD (LANES)	PRELIMINARY	RIGHT-OF-WAY	RAILROADS &	CONSTRUCTION	GRANTS &	MISC.
FEDERAL AID NUMBER	FAC AUTH DATE FUND			ENGINEERING		UTILITIES			
2129498	I-75 OPERATIONAL								
IMPROVEMENT @ SR26									
ALACHUA		INTERCHANGE IMPROVEMENT							
26260000	.494 MI	0 0 0							
0752 146 I		HSP		0	0	0	3,642,984	0	
		NH		0	0	0	238,160	0	
		** ITEM TOTALS **		0	0	0	3,881,144	0	
4230281	SR 200 (US 301)								
CSX RAILROAD OVERPASS									
ALACHUA		INTERCHANGE IMPROVEMENT							
26130000	1.898 MI	2 2 0							
3114 030 P		ACEN		0	0	0	148,387	0	
		EBNH		0	0	0	-69,335	0	
		** ITEM TOTALS **		0	0	0	79,052	0	
4246321	I-75 FRONTAGE ROAD								
FROM US 441 TO END OF SECTION									
ALACHUA		RESURFACING							
26260058	1.550 MI	2 2 0							
0752 144 I		IMAC		11,000	0	0	0	0	
4246851	I-75								
@ US 441 OPERATIONAL IMPROVEMENTS									
ALACHUA		INTERCHANGE IMPROVEMENT							
26260000	.167 MI	0 0 0							
0752 147 I		SA		636,844	0	0	0	0	
4262082	SR 121/NW 34TH ST.								
SR 222/NW 39TH AVE/MP5.86 TO NW 55TH BLVD /MP7.730									
ALACHUA		SIDEWALK							
26250000	1.870 MI	2 2 0							
ARRA 607 B		FSSL		0	0	0	298,710	0	
		SE		0	0	0	0	0	
		** ITEM TOTALS **		0	0	0	298,710	0	
4262251	SR 45(US 41)								
@SW 30TH AVE									
ALACHUA		ADD TURN LANE(S)							
26030000	.001 MI	2 0 0							
ARRA 045 B		FSSL		0	0	0	-2,031	0	

10/04/10  
10.43.52  
GAINESVILLE MTPO

FLORIDA DEPARTMENT OF TRANSPORTATION  
FEDERAL OBLIGATIONS - PROJECT DETAIL  
FFY 2010 (10/01/2009 - 09/30/2010)

PAGE 3  
FPMOBL10 (A)

\*\*\*\*\*  
\*\*HIGHWAYS\*\*  
\*\*\*\*\*

ITEM NO	DESCRIPTION	OLD ITEM							
COUNTY	TYPE OF WORK								
RDWY ID PROJ LGTH	EXIST/IMPROVE/ADD (LANES)								
FEDERAL AID NUMBER FAC AUTH DATE FUND									
ARRA 045 B	SL		0	0	0	5,671	0		
** ITEM TOTALS **			0	0	0	3,640	0		
4262281 CR 329/MAIN ST.									
FROM NW 8TH AVE TO NW 23RD AVE									
ALACHUA RESURFACING									
26600000 1.056 MI 4 4 0									
ARRA 046 B	EB		0	0	0	3,414	0		
	FSSL		0	0	0	-7,925	0		
	SL		0	0	0	14,845	0		
** ITEM TOTALS **			0	0	0	10,334	0		
4262941 SW 122ND STREET									
FROM: SR 24 TO: SW 89TH AVENUE									
ALACHUA WIDEN/RESURFACE EXIST LANES									
26000019 .343 MI 2 2 0									
ARRA 048 B	EB		0	0	0	6,777	0		
	FSSL		0	0	0	9,528	0		
	SL		0	0	0	9,206	0		
** ITEM TOTALS **			0	0	0	25,511	0		
4272151 SR 200 ( US 301 )									
@ HAWTHORNE - REBUILD RR CROSSING #627443-W									
ALACHUA RAILROAD CROSSING									
26060000 .100 MI 4 0 0									
3114 033 P	SA		0	0	375,000	0	0		
4273261 NE 15TH ST									
FROM SR 222 TO 4400 BLOCK									
ALACHUA SIDEWALK									
.000 0 0 0									
SRTS 101 A	ACSA		0	0	0	68,388	0		
	SA		0	0	0	11,794	0		
	SR2E		0	0	0	0	0		
	SR2S		0	0	0	78,234	0		
** ITEM TOTALS **			0	0	0	158,416	0		
HIGHWAYS TOTALS:			10,422,214	650,844	0	629,000	9,142,370	0	

10/04/10  
10.43.52  
GAINESVILLE MTPO

FLORIDA DEPARTMENT OF TRANSPORTATION  
FEDERAL OBLIGATIONS - PROJECT DETAIL  
FFY 2010 (10/01/2009 - 09/30/2010)

PAGE 4  
FPMOBL10 (A)

\*\*\*\*\*  
\*\*TRANSPORTATION PLANNING\*\*  
\*\*\*\*\*

ITEM NO	DESCRIPTION	OLD ITEM						
COUNTY	RDWY ID	PROJ LGTH	FAC	TYPE OF WORK EXIST/IMPROVE/ADD (LANES)	PRELIMINARY ENGINEERING	RIGHT-OF-WAY	RAILROADS & UTILITIES	GRANTS & CONSTRUCTION MISC.
FEDERAL AID NUMBER				FUND				
2140947	GAINESVILLE UPWP /PL							
FY 2008/2009 & 2009/2010				TRANSPORTATION PLANNING				
ALACHUA								
	.000			0 0 0				
0241 046 M				PL	285,319	0	0	0
2140949	GAINESVILLE UPWP/PL							
FY 2010/2011 & 2011/2012				TRANSPORTATION PLANNING				
ALACHUA								
	.000			0 0 0				
0241 048 M				PL	198,134	0	0	0
PLANNING TOTALS:					483,453	0	0	0

10/04/10  
10.43.52  
GAINESVILLE MTPO

FLORIDA DEPARTMENT OF TRANSPORTATION  
FEDERAL OBLIGATIONS - PROJECT DETAIL  
FFY 2010 (10/01/2009 - 09/30/2010)

PAGE 5  
FPMOBL10 (A)

\*\*\*\*\*  
\*\*PTO: TRANSIT\*\*  
\*\*\*\*\*

ITEM NO	DESCRIPTION	OLD ITEM							
COUNTY	TYPE OF WORK								
RDWY ID	PROJ LGTH	EXIST/IMPROVE/ADD (LANES)	PRELIMINARY	RIGHT-OF-WAY	RAILROADS &	CONSTRUCTION	GRANTS &		
FEDERAL AID NUMBER	FAC	AUTH DATE	FUND	ENGINEERING	UTILITIES		MISC.		
4048331	CITY OF GAINESVILLE								
STP FLEX FUNDS	PURCHASE OF PARATRANSIT BUSES								
ALACHUA	PURCHASE VEHICLES/EQUIPMENT								
FTAX 002 A	.000	0 0 0	SA	0	0	0	0	250,000	
4263201	ARRA GAINESVILLE								
PURCHASE TRANSIT VEHICLES									
ALACHUA	CAPITAL FOR FIXED ROUTE								
FTAX 002 A	.000	0 0 0	FSSL	0	0	0	0	1,571,294	
TRANSIT TOTALS:			1,821,294	0	0	0	0	1,821,294	
GRAND TOTALS:			12,726,961	1,134,297	0	629,000	9,142,370	1,821,294	

10/04/10  
10.43.52  
GAINESVILLE MTPO

FLORIDA DEPARTMENT OF TRANSPORTATION  
FEDERAL OBLIGATIONS - SYSTEM SUMMARY  
FFY 2010 (10/01/2009 - 09/30/2010)

PAGE 1  
FPMOBL10 (B)

\*\*\*\*\*  
\*\*HIGHWAYS\*\*  
\*\*\*\*\*

WORK PROGRAM FUND	TOTAL	ENGINEERING	RIGHT-OF-WAY	UTILITIES	CONSTRUCTION	MISC.
ACEN - ADVANCE CONSTRUCTION (EBNH)	148,387	0	0	0	148,387	0
ACSA - ADVANCE CONSTRUCTION (SA)	322,388	0	0	254,000	68,388	0
EB - EQUITY BONUS	147,944	3,000	0	0	144,944	0
EBNH - EQUITY BONUS SUPPLEMENTING NH	-69,335	0	0	0	-69,335	0
FSF1 - FED STIMULUS, S/W MANAGED	3,741,863	0	0	0	3,741,863	0
FSSL - FED STIMULUS, AREAS <= 200K	298,282	0	0	0	298,282	0
HPP - HIGH PRIORITY PROJECTS	0	0	0	0	0	0
HSP - SAFETY (HIWAY SAFETY PROGRAM)	4,392,945	0	0	0	4,392,945	0
IMAC - IM (AC/REGULAR)	11,000	11,000	0	0	0	0
NH - PRINCIPAL ARTERIALS	238,160	0	0	0	238,160	0
SA - STP, ANY AREA	1,023,638	636,844	0	375,000	11,794	0
SE - STP, ENHANCEMENT	0	0	0	0	0	0
SL - STP, AREAS <= 200K	88,708	0	0	0	88,708	0
SR2E - SAFE ROUTES - EITHER	0	0	0	0	0	0
SR2S - SAFE ROUTES - INFRASTRUCTURE	78,234	0	0	0	78,234	0
HIGHWAYS TOTALS:	10,422,214	650,844	0	629,000	9,142,370	0

10/04/10  
10.43.52  
GAINESVILLE MTPO

FLORIDA DEPARTMENT OF TRANSPORTATION  
FEDERAL OBLIGATIONS - SYSTEM SUMMARY  
FFY 2010 (10/01/2009 - 09/30/2010)  
\*\*\*\*\*  
\*\*TRANSPORTATION PLANNING\*\*  
\*\*\*\*\*

WORK PROGRAM FUND		TOTAL	ENGINEERING	RIGHT-OF-WAY	UTILITIES	CONSTRUCTION	MISC.
PL	- METRO PLAN (85% FA; 15% OTHER)	483,453	483,453	0	0	0	0
PLANNING TOTALS:		483,453	483,453	0	0	0	0

10/04/10  
10.43.52  
GAINESVILLE MTPO

FLORIDA DEPARTMENT OF TRANSPORTATION  
FEDERAL OBLIGATIONS - SYSTEM SUMMARY  
FFY 2010 (10/01/2009 - 09/30/2010)  
\*\*\*\*\*  
\*\*PTO: TRANSIT\*\*  
\*\*\*\*\*

PAGE 3  
FPMOBL10 (B)

WORK PROGRAM FUND	TOTAL	ENGINEERING	RIGHT-OF-WAY	UTILITIES	CONSTRUCTION	MISC.
FSSL - FED STIMULUS, AREAS <= 200K	1,571,294	0	0	0	0	1,571,294
SA - STP, ANY AREA	250,000	0	0	0	0	250,000
TRANSIT TOTALS:	1,821,294	0	0	0	0	1,821,294
GRAND TOTALS:	12,726,961	1,134,297	0	629,000	9,142,370	1,821,294

10/04/10  
10.43.52  
GAINESVILLE MTPO

FLORIDA DEPARTMENT OF TRANSPORTATION  
FEDERAL OBLIGATIONS - OVERALL SUMMARY  
FFY 2010 (10/01/2009 - 09/30/2010)

PAGE 1  
FPMOBL10 (C)

WORK PROGRAM FUND	TOTAL	ENGINEERING	RIGHT-OF-WAY	UTILITIES	CONSTRUCTION	MISC.
ACEN - ADVANCE CONSTRUCTION (EBNH)	148,387	0	0	0	148,387	0
ACSA - ADVANCE CONSTRUCTION (SA)	322,388	0	0	254,000	68,388	0
EB - EQUITY BONUS	147,944	3,000	0	0	144,944	0
EBNH - EQUITY BONUS SUPPLEMENTING NH	-69,335	0	0	0	-69,335	0
FSP1 - FED STIMULUS, S/W MANAGED	3,741,863	0	0	0	3,741,863	0
FSSL - FED STIMULUS, AREAS <= 200K	1,869,576	0	0	0	298,282	1,571,294
HPP - HIGH PRIORITY PROJECTS	0	0	0	0	0	0
HSP - SAFETY (HIWAY SAFETY PROGRAM)	4,392,945	0	0	0	4,392,945	0
IMAC - IM (AC/REGULAR)	11,000	11,000	0	0	0	0
NH - PRINCIPAL ARTERIALS	238,160	0	0	0	238,160	0
PL - METRO PLAN (85% FA; 15% OTHER)	483,453	483,453	0	0	0	0
SA - STP, ANY AREA	1,273,638	636,844	0	375,000	11,794	250,000
SE - STP, ENHANCEMENT	0	0	0	0	0	0
SL - STP, AREAS <= 200K	88,708	0	0	0	88,708	0
SR2E - SAFE ROUTES - EITHER	0	0	0	0	0	0
SR2S - SAFE ROUTES - INFRASTRUCTURE	78,234	0	0	0	78,234	0
GRAND TOTALS:	12,726,961	1,134,297	0	629,000	9,142,370	1,821,294

**APPENDIX G**

**SUPPLEMENTAL SURFACE TRANSPORTATION PROGRAM  
(STP) FUND-ELIGIBLE PROJECTS**

(page left blank intentionally)

**ALACHUA COUNTY AND CITY OF GAINESVILLE  
NONPRIORITIZED SURFACE TRANSPORTATION PROGRAM  
(STP) FUND-ELIGIBLE PROJECTS**

<b>PROJECT</b>	<b>LOCATION</b>	<b>DESCRIPTION</b>
Archer Road	FM: SW 91 Street TO: SW 75 Street	Reconstruct as a 4-lane divided facility
County Road 225	AT: NE 53 Avenue	Reconstruct intersection and signalize
Lake Shore Drive/ County Road 329B	FM: Hawthorne Road TO: State Road 26	Mill and resurface; add paved shoulders and turnbays
North Main Street	FM: N 39 Avenue TO: N 53 Avenue	Mill and resurface
NE 8 Avenue	FM: N Main Street TO: NE Boulevard	Mill and resurface
Rocky Point Road	FM: Williston Road TO: SW 13 Street	Reconstruct with wider lanes, paved shoulders, turnbays; mill and resurface existing pavement
SE 4 Street	FM: Williston Road TO: Depot Avenue	Mill and resurface
SE 16 Avenue	FM: Main Street TO: Williston Road	Reconstruct as a 4-lane divided facility
State Roads 26/26A	FM: NW 38 Street TO: Gale Lemarand Drive	Implement one-way pair configuration
SW 8 Avenue	FM: SW 122 Street TO: Tower Road	Resurface/reconstruct; add paved shoulders and sidewalk on one side
SW 20 Avenue	AT: SW 34 Street	Construct grade-separated crossing
SW 35 Place	FM: SW 34 Street TO: SW 23 Terrace	Mill and resurface
SW 62 Boulevard	FM: SW 20 Avenue TO: Newberry Road	Mill and resurface
SW 91 Street	FM: SW 24 Avenue TO Newberry Road	Mill and resurface; add paved shoulders

(page left blank intentionally)

**NORTH CENTRAL FLORIDA REGIONAL PLANNING COUNCIL  
TRANSPORTATION PLANNING STAFF**

Scott R. Koons, AICP, Executive Director

Marlie Sanderson, AICP, Director of Transportation Planning

Lynn Franson-Godfrey, AICP, Senior Planner

\* Michael Escalante, AICP, Senior Planner

\*\* Steven Dopp, Senior Planner

\*\* Blake Harvey, Planning Intern

Suwan Shen, Planning Intern

\* Primary Responsibility

\*\* Secondary Responsibility