

FISCAL YEARS 2011/2012 - 2015/2016

LIST OF PRIORITY PROJECTS

Approved by the
Metropolitan Transportation Planning Organization (MTPO)
for the Gainesville Urbanized Area
2009 NW 67 Place
Gainesville, Florida



Paula DeLaney, Chair

The preparation of this report has been financed in part through grants from the Federal Highway Administration and Federal Transit Administration, U.S. Department of Transportation, under the State Planning and Research Program, Section 505 [or Metropolitan Planning Program, Section 104(f)] of Title 23, U.S. Code. The contents of this report do not necessarily reflect the official views or policy of the U.S. Department of Transportation.

May 10, 2010

(PAGE LEFT BLANK INTENTIONALLY)

TABLE OF CONTENTS

<u>Section</u>	<u>Page</u>
I	INTRODUCTION1
	Purpose of this Report.....1
	Methodology Used for Setting Priorities1
	Development.....3
	Transportation System Modifications Selected from the Gainesville Metropolitan Area 2025 Transportation Plan- The Livable Community Reinvestment Plan.....3
	Relationship to the Management Systems3
	MTPO Urban Design Policies3
	Public Involvement and Service Equity.....3
	Safety and Security in the Transportation Planning Process4
II	PROJECT PRIORITIES5
APPENDIX A	TRANSPORTATION PLANS AND PROGRAMS - EIGHT METROPOLITAN PLANNING AREAS TO BE CONSIDERED..... A-1
APPENDIX B	ROADS OPERATING AT AN UNACCEPTABLE HIGHWAY LEVEL OF SERVICEB-1
	Roads Operating at an Unacceptable Highway Level of ServiceB-3
APPENDIX C	METROPOLITAN TRANSPORTATION PLANNING ORGANIZATION FOR THE GAINESVILLE METROPOLITAN AREA ADOPTED YEAR 2025 LIVABLE COMMUNITY REINVESTMENT COST FEASIBLE PLAN.....C-1
APPENDIX D	REGIONAL TRANSIT SYSTEM SUPPLEMENTAL INFORMATION..... D-1
	Fiscal Years 2011/2012 - 2015/2016 Public Transportation Priorities Supplemental Information Priority 6 and 7 Projects..... D-3

TABLE OF CONTENTS (Continued)

<u>Section</u>	<u>Page</u>
APPENDIX E SAFETY PROJECT SUPPLEMENTAL MATERIAL	E-1
APPENDIX F FEDERAL FUNDS OBLIGATION PROJECT LIST FISCAL YEAR 2009 [10/01/2008 - 09/30/2009]	F-1
APPENDIX G SUPPLEMENTAL SURFACE TRANSPORTATION PROGRAM (STP) FUND-ELIGIBLE PROJECTS.....	G-1
Alachua County and City of Gainesville Nonprioritized Surface Transportation Program (STP) Fund-Eligible Projects	G-3
APPENDIX H CITY OF GAINESVILLE PUBLIC WORKS DEPARTMENT SUPPLEMENTAL INFORMATION	H-1
City of Gainesville Public Works Department February 26, 2009 Transportation Priorities by Category	H-3

LIST OF TABLES

<u>Table</u>	<u>Page</u>
1 Fiscal Years 2011/2012 - 2015/2016 Enhancement Priorities.....	9
2 Fiscal Years 2011/2012 - 2015/2016 Intelligent Transportation System Priorities..	11
3 Fiscal Years 2011/2012 - 2015/2016 Landscaping Priorities	13
4 Fiscal Years 2011/2012 - 2015/2016 Project, Development and Environment (PD&E) Study Priorities	15
5 Fiscal Years 2011/2012 - 2015/2016 Public Transportation Priorities.....	17
6 Fiscal Years 2011/2012 - 2015/2016 Right-Of-Way Priorities	21
7 Fiscal Years 2011/2012 - 2015/2016 Safe Routes To School Priorities.....	23
8 Fiscal Years 2011/2012 - 2015/2016 Safety Priorities	25
9 Fiscal Years 2011/2012 - 2015/2016 Strategic Intermodal System Priorities	27
10 Fiscal Years 2011/2012 - 2015/2016 Surface Transportation Program (STP) Fund Priorities	29
11 Fiscal Years 2011/2012 - 2015/2016 Traffic Operations Priorities.....	31
12 Fiscal Years 2011/2012 - 2015/2016 Transit Corridor Development Priorities.....	33
13 Fiscal Years 2011/2012 - 2015/2016 Transportation Disadvantaged Priorities- Transportation Disadvantaged Trust Fund.....	34
14 Fiscal Years 2011/2012 - 2015/2016 Transportation Disadvantaged Priorities- Federal Transit Administration Section 5311- Nonurbanized Area Formula Program.....	35
15 Fiscal Years 2011/2012 - 2015/2016 Transportation Disadvantaged Priorities- Federal Transit Administration Section 5316- Job Access and Reverse Commute	36
16 Fiscal Years 2011/2012 - 2015/2016 Transportation Disadvantaged Priorities- Federal Transit Administration Section 5317- New Freedom Program	37
17 Fiscal Years 2011/2012 - 2015/2016 Transportation Regional Incentive Program (TRIP) Priorities.....	39

LIST OF ILLUSTRATIONS

<u>Illustration</u>	<u>Page</u>
I MTPO Calendar.....	2
II Fiscal Years 2011/2012 - 2015/2016 Enhancement Priorities	8
III Fiscal Years 2011/2012 - 2015/2016 Intelligent Transportation System (ITS) Priorities	10
IV Fiscal Years 2011/2012 - 2015/2016 Landscaping Priorities.....	12
V Fiscal Years 2011/2012 - 2015/2016 Project, Development and Environment (PD&E) Study Priorities	14
VI Fiscal Years 2011/2012 - 2015/2016 Public Transportation Priorities	16
VII Fiscal Years 2011/2012 - 2015/2016 Right-Of-Way Priorities.....	20
VIII Fiscal Years 2011/2012 - 2015/2016 Safe Routes To School Priorities.....	22
IX Fiscal Years 2011/2012 - 2015/2016 Safety Priorities	24
X Fiscal Years 2011/2012 - 2015/2016 Strategic Intermodal System Priorities	26
XI Fiscal Years 2011/2012 - 2015/2016 Surface Transportation Program (STP) Fund Priorities	28
XII Fiscal Years 2011/2012 - 2015/2016 Traffic Operations Priorities	30
XIII Fiscal Years 2011/2012 - 2015/2016 Transit Corridor Development Priorities	32
XIV Fiscal Years 2011/2012 - 2015/2016 Transportation Regional Incentive Program (TRIP) Priorities	38
XV MTPO Year 2025 Cost Feasible Livable Community Reinvestment Plan Priority Ranking of Projects.....	C-6

I

INTRODUCTION

Each Spring, the Metropolitan Transportation Planning Organization (MTPO) for the Gainesville Urbanized Area approves a five-year program for transportation system modification projects to be funded with federal, state and local funds. This five-year program is referred to as the "Transportation Improvement Program (TIP)."

The process that is used to develop the TIP is described in Illustration I. As show in this illustration, the TIP has the following three phases:

- Summer- MTPO approves priority lists for projects it wants Florida Department of Transportation (FDOT) to fund;
- Late Fall- FDOT reports to the MTPO what projects it proposes to fund; and
- Spring- MTPO decides which federally-funded projects to approve.

PURPOSE

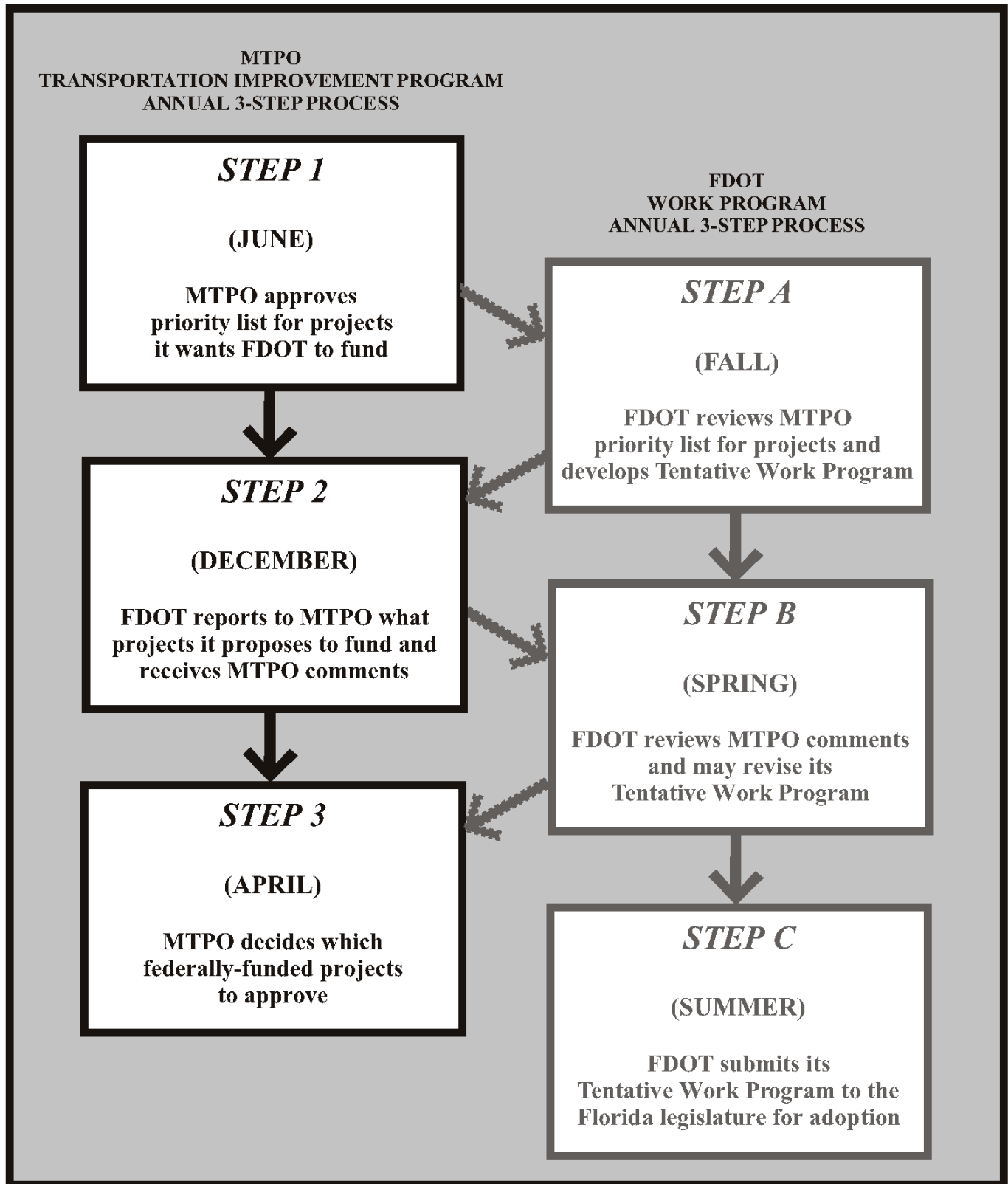
This report develops a list of needed, but unfunded, transportation projects. The projects listed later in this report are determined by the MTPO to be necessary to effectively implement the adopted long range transportation plan. Projects selected for funding will be incorporated into the MTPO's Fiscal Years 2011/2011 - 2015/2016 TIP.

METHODOLOGY

The following methodology has been used to establish the priorities contained in this report:

- March- draft report distributed to the MTPO Advisory Committees that identifies transportation priorities submitted last year and, of those, which ones were funded;
- April- MTPO Advisory Committees develop recommended transportation priorities for the coming year; and
- May- MTPO approves transportation priorities for the coming year and submits a "List of Priority Projects" to FDOT.

ILLUSTRATION I
MTPO CALENDAR



DEVELOPMENT

Section 134 (f) of title 23, United States Code states that, in developing transportation programs, metropolitan planning organizations shall consider the eight contained in Appendix A. These areas have been considered in the development of the project priorities contained in this report.

TRANSPORTATION SYSTEM MODIFICATIONS SELECTED FROM THE GAINESVILLE METROPOLITAN AREA 2025 TRANSPORTATION PLAN- THE LIVABLE COMMUNITY REINVESTMENT PLAN

The transportation system modifications that have been identified as priorities from the adopted Livable Community Reinvestment Plan are listed in the Public Transportation Priorities, Surface Transportation Program Fund Priorities and Traffic Operations Priorities project tables.

RELATIONSHIP TO THE MANAGEMENT SYSTEMS

The transportation priorities contained in this report are developed from available information from the management systems required for the Gainesville Metropolitan Area as a result of the Safe, Accountable, Flexible, Efficient Transportation Equity Act: A Legacy for Users (SAFETEA-LU). The congestion management system (CMS) for the Gainesville Metropolitan Area was fully operational by October 1, 1997.

MTPO URBAN DESIGN POLICIES

The MTPO has, over the years, adopted various urban design and streetscape policies. These policies have been consolidated into a document entitled "MTPO Urban Design Policy Manual." Therefore, unless otherwise stated within this "List of Priority Projects" document, all priority project recommendations shall be in conformance with the "MTPO Urban Design Policy Manual" document.

PUBLIC INVOLVEMENT AND SERVICE EQUITY

Citizen involvement in the TIP three-step process is promoted through the MTPO's Public Involvement Process which was developed and adopted pursuant to 23 CFR 450.316(b)(1) requirements. The MTPO's Public Involvement Plan describes a process to involve the public, including private transportation operators, in the transportation planning process, including the annual development of the TIP, in accordance with Chapter 339.175(7), Florida Statutes. In addition, the MTPO's Public Involvement Plan includes strategies to address service equity, including outreach to socioeconomic communities that have traditionally been underrepresented in the transportation planning process. The MTPO sponsors workshops and charrettes, as necessary, regarding projects in the TIP.

MTPO staff provides local news media notification of meetings when the List of Priority Projects is scheduled for review and approval by the MTPO and its Advisory Committees,

thereby providing citizens an opportunity to participate in the development of the List of Priority Projects. To inform the general public and other interested persons who may want to review and comment on the List of Priority Projects, public notice is also provided through the Clerk of the City of Gainesville, who places meeting notices on City's Community Calendar and in the local newspaper's listing of public meetings of the week.

FREIGHT SHIPPERS

The MTPO maintains a database of freight shippers that serve and/or are based in the Gainesville Metropolitan Area. Correspondence is sent to the freight shippers inviting them to participate in the development of the TIP. Freight shippers are notified of the MTPO meeting dates when the List of Priority Projects and the TIP documents are considered by the MTPO.

PUBLIC TRANSPORTATION USERS

The MTPO coordinates with Regional Transit System (RTS) staff for public involvement in the development of the TIP. The Regional Transit System Advisory Board provides input for transit projects to be included in the List of Priority Projects. In addition, RTS staff conducts transit forums to gather public input. The Alachua County Transportation Disadvantaged Coordinating Board (ACTDCB), which includes public transportation users, provides input for transportation disadvantaged projects to be included in the List of Priority Projects. Each year, MTPO staff solicits input from RTS and ACTDCB for projects to be included in the List of Priority Projects.

SAFETY AND SECURITY IN THE TRANSPORTATION PLANNING PROCESS

The Florida Department of Transportation supports a network of Community Traffic Safety Teams. These Teams are comprised of state and local technical expertise for transportation system management and planning, public safety, including police and fire personnel, and education. In addition to MTPO staff, the Alachua County Traffic Safety Team (ACTST) is comprised of representatives from:

STATE OF FLORIDA	ALACHUA COUNTY	CITY OF GAINESVILLE
Florida Department of Transportation	Fire Rescue	Fire Rescue
Florida Highway Patrol	School Board	Police Department
University of Florida (UF) T2 Center	Sheriff's Office	Public Works Department
UF Facilities Planning & Construction	Public Works Department	

The MTPO receives ACTST recommendations for safety-funded projects in the List of Priority Projects. Currently, the focus of transportation system security is on airport facilities.

II

PROJECT PRIORITIES

ENHANCEMENT PRIORITIES

Table 1 identifies enhancement project priorities for the Fiscal Years 2011/2012 - 2015/2016 TIP.

INTELLIGENT TRANSPORTATION SYSTEM (ITS) PRIORITIES

Table 2 identifies ITS project priorities for the Fiscal Years 2011/2012 - 2015/2016 TIP.

LANDSCAPING PRIORITIES

Table 3 identifies landscaping project priorities for the Fiscal Years 2011/2012 - 2015/2016 TIP.

PROJECT, DEVELOPMENT AND ENVIRONMENT (PD&E) STUDY PRIORITIES

Table 4 identifies PD&E study project priorities for the Fiscal Years 2011/2012 - 2015/2016 TIP.

PUBLIC TRANSPORTATION PRIORITIES

Table 5 identifies public transportation project priorities. This category includes: commuter assistance projects; intermodal facility projects; park-and-ride facility projects railroad right-of-way projects; transit system projects for the Fiscal Years 2010/2011 - 2014/2015.

RIGHT-OF-WAY PRIORITIES

Table 6 identifies right-of-way project priorities for the Fiscal Years 2011/2012 - 2015/2016 TIP.

SAFE ROUTES TO SCHOOL PRIORITIES

Table 7 identifies transportation safe routes to school project priorities developed by the Bicycle/Pedestrian Advisory Board (B/PAB) and Alachua County Traffic Safety Team (ACTST) for the Fiscal Years 2011/2012 - 2015/2016 TIP.

SAFETY PRIORITIES

Table 8 identifies transportation safety project priorities developed by the Technical Advisory Committee (TAC) and Alachua County Traffic Safety Team (ACTST) for the Fiscal Years 2011/2012 - 2015/2016 TIP.

STRATEGIC INTERMODAL SYSTEM (SIS) PRIORITIES

Table 9 identifies SIS project priorities for the Fiscal Years 2011/2012 - 2015/2016 TIP.

SURFACE TRANSPORTATION PROGRAM (STP) FUND PRIORITIES

Table 10 identifies STP-eligible capacity modification priorities. This category includes: bicycle facility projects; Non-State resurfacing projects; pedestrian facility (including school safety concern) projects; road construction and reconstruction projects; streetlighting; and additional public transportation, traffic operations and transportation disadvantaged projects for the Fiscal Years 2011/2012 - 2015/2016 TIP.

TRAFFIC OPERATIONS PRIORITIES

Table 11 identifies traffic operations project priorities. This category includes: congestion management system (CMS) projects; intelligent transportation system (ITS) projects; and intersection modification projects for the Fiscal Years 2011/2012 - 2015/2016 TIP.

TRANSIT CORRIDOR DEVELOPMENT PRIORITIES

Table 12 identifies transit corridor development project priorities for the Fiscal Years 2011/2012 - 2015/2016 TIP.

TRANSPORTATION DISADVANTAGED PRIORITIES

Table 13, Table 14, Table 15 and Table 16 identify transportation disadvantaged project priorities for the Fiscal Years 2011/2012 - 2015/2016 TIP.

TRANSPORTATION REGIONAL INCENTIVE PROGRAM (TRIP) PRIORITIES

Table 17 identifies TRIP project priorities for the Fiscal Years 2011/2012 - 2015/2016 TIP.

(page left blank intentionally)

ILLUSTRATION II

FISCAL YEARS 2011/2012 - 2015/2016 TRANSPORTATION PRIORITIES

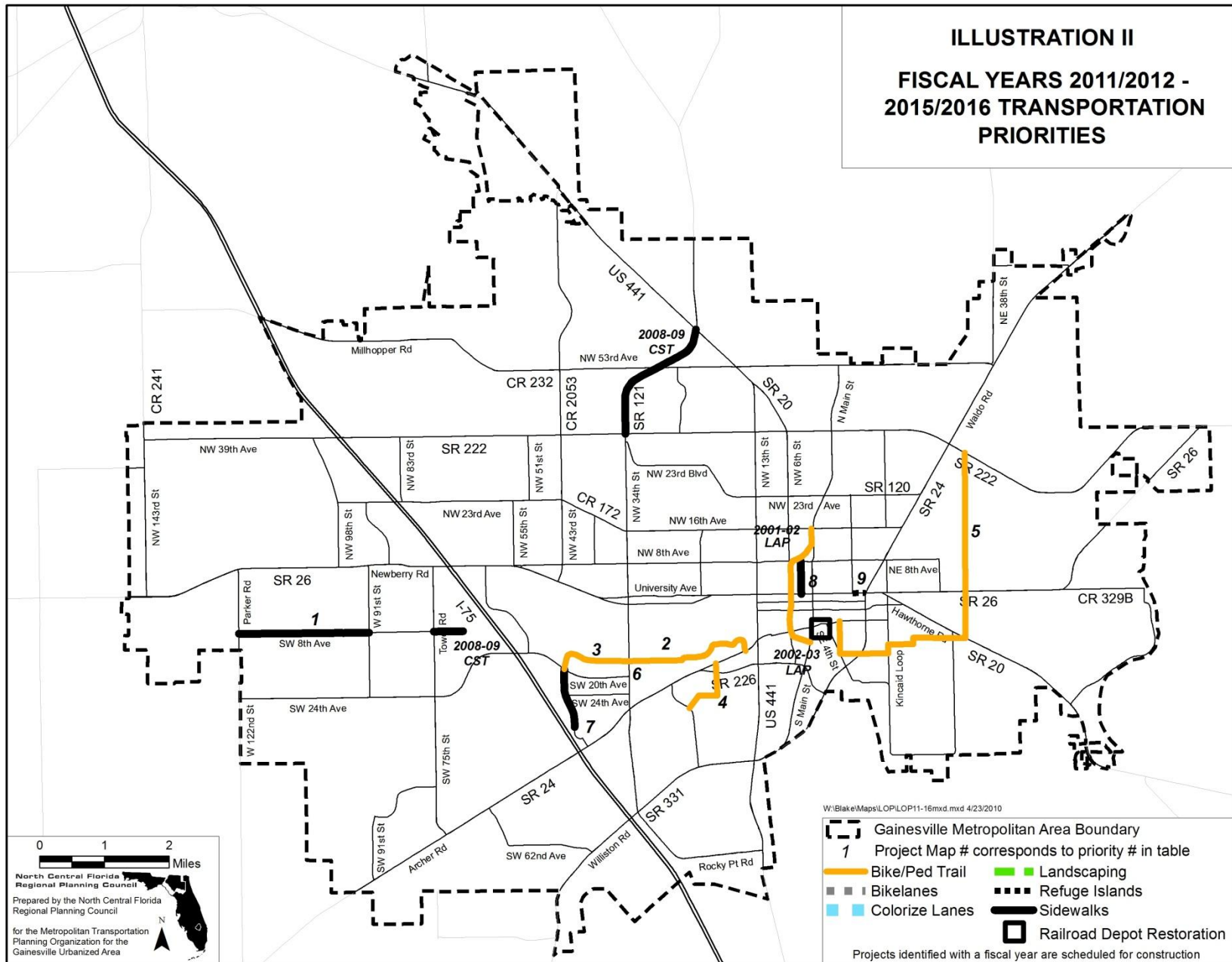


TABLE 1
FISCAL YEARS 2011/2012 - 2015/2016
ENHANCEMENT PRIORITIES
(within the Gainesville Metropolitan Area)

(Note: Projects in italic text are partially funded, as identified in the Transportation Improvement Program.)

NUMBER	PROJECT	LOCATION	DESCRIPTION
1 <i>Partially Funded</i>	SW 8 Avenue	FM: Parker Road TO: SW 91 Street	Construct ADA-compliant concrete sidewalk
2	UF Cross Campus Trail [part of Archer Braid*]	FM: SW 34 Street [SR 121] TO: Archer Road [SR 24]	Construct bicycle/pedestrian trail
3	Hull Road Extension Trail North [part of the Archer Braid*]	FM: SW 20 Avenue TO: SW 34 Street [SR 121]	Construct bicycle/pedestrian trail
4	SW 23 Road Trail [part of the Bivens Braid*]	FM: SW 23 Terrace TO: Archer Road [SR 24]	Construct bicycle/pedestrian trail
5	Downtown East Central Trail	FM: Depot Avenue TO: NE 39 Avenue [SR 222]	Construct bicycle/pedestrian trail
6	Hull Road Extension Trail North [part of the Archer Braid*]	AT: SW 34 Street	Construct bicycle/pedestrian grade-separated crossing
7	SW 43 Street	FM: SW 40 Boulevard TO: SW 20 Avenue	Construct ADA-compliant sidewalk
8	NW 3 Street	FM: W University Avenue TO: NW 8 Avenue	Construct ADA-compliant sidewalk
9	E University Avenue [SR 26]	FM: E 9 Street TO: Waldo Road [SR 24]	Pedestrian refuge islands
10	Bus Stop Upgrades for ADA compliance	AT: RTS Systemwide	Construct ADA-compliant stops and sidewalk connections

*2004 Alachua Countywide Bicycle Master Plan Addendum

ADA- Americans with Disabilities Act
RTS- Regional Transit System
UF- University of Florida

Initial Enhancement Priorities were developed by the Bicycle/Pedestrian Advisory Board.

TABLE 2

FISCAL YEARS 2011/2012 - 2015/2016
INTELLIGENT TRANSPORTATION SYSTEM (ITS) PRIORITIES
(Gainesville Metropolitan Area/Countywide)

NUMBER	PROJECT	LOCATION	DESCRIPTION
1	Traffic Management System- Phase V- Interstate 75	FM: Marion Countyline TO: Columbia Countyline	Install real-time monitoring and surveillance equipment, including message boards. Equip the regional TMC (operated by the City of Gainesville) with necessary ITS equipment to operate.
2	Traffic Management System- Phase VI-	-	Place dynamic message signs throughout the Gainesville Metropolitan Area and major corridors in and through Alachua County. These Signs, that will provide real time information to motorist related to traffic conditions, road closures and homeland security, will be connected to the existing Gainesville Area Traffic Management System operated by the City of Gainesville.
	US 301	FM: Marion Countyline TO: Columbia Countyline	
	US 441	FM: Marion Countyline TO: Columbia Countyline	
	Newberry Road [SR 26]	FM: Gilchrist Countyline TO: W 34 Street [SR 121]	
	Archer Road [SR 24]	FM: Levy Countyline TO: US 441	
	N 39 Avenue [SR 222]	FM: NW 143 Street [CR 241] TO: SR 26	
	Williston Road [SR 121/331]	FM: Levy Countyline TO: SR 121	
	W 34 Street [SR 121]	FM: Williston Road [SR 331] TO: Union Countyline	
	Waldo Road [SR 24]	FM: University Avenue [SR 26] TO: Bradford Countyline	
	Main Street	FM: Williston Road [SR 331] TO: N 53 Avenue	
	University Avenue [SR 26]	FM: W 34 Street [SR 121] TO: Putnam Countyline	
	NW 43 Street	FM: Newberry Road [SR 26] TO: US 441	
	Hawthorne Road	FM: University Avenue [SR 26] TO: Putnam Countyline	
	N 8 Avenue	FM: Newberry Road [SR 26] TO: Waldo Road [SR 24]	
	N 23 Avenue [SR 120]	FM: NW 13 Street [US 441] TO Waldo Road [SR 24]	
	NW 23 Avenue	FM NW 98 Street TO NW 43 Street	
	N 16 Avenue/Boulevard	FM: NW 43 Street TO: Waldo Road [SR 24]	
	W 6 Street	FM SW 16 Avenue [SR 226] TO: US 441	
	N 53 Avenue	FM: NW 43 Street TO Waldo Road [SR 24]	

Initial ITS Priorities were developed by City of Gainesville Traffic Operations staff.

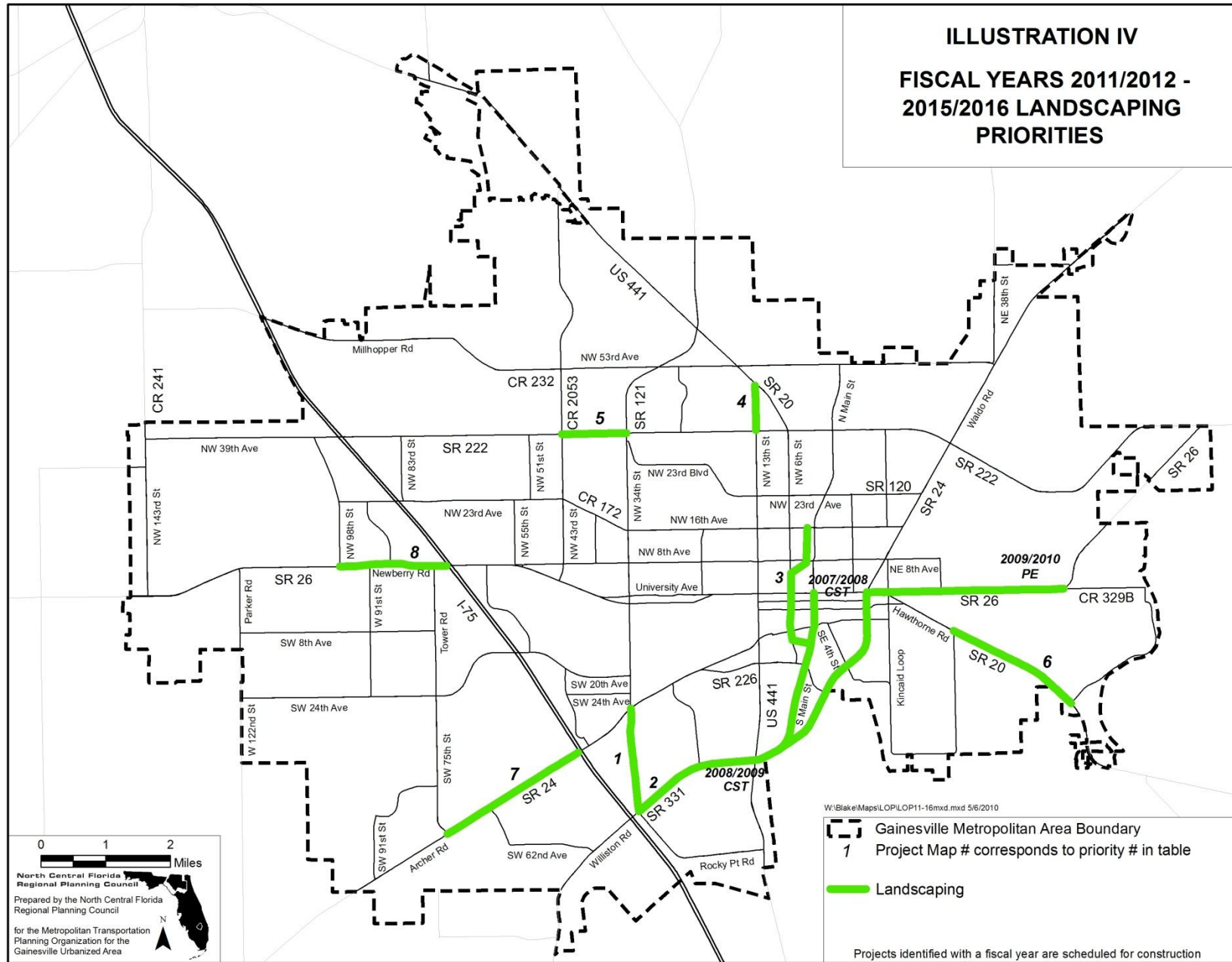


TABLE 3

FISCAL YEARS 2011/2012 - 2015/2016

LANDSCAPING PRIORITIES-

STATE HIGHWAY SYSTEM (SHS) ONLY*

(within the Gainesville Metropolitan Area)

(Note: Projects in italic text are partially funded, as identified in the Transportation Improvement Program.)

NUMBER	PROJECT	LOCATION	DESCRIPTION
1	SW 34 Street [SR 121]	FM: Williston Road [SR331] TO: Archer Road [SR 24]	provide shade tree landscaping for pedestrian facilities where possible and landscaping to grassed medians where it is not possible
2	Williston Road [SR331]	FM: SW 34 Street [SR 121] TO: SW 23 Terrace	provide shade tree landscaping for pedestrian facilities where possible and landscaping to grassed medians where it is not possible
3	West 6 Street Rail/Trail	FM: Depot Avenue TO: NW 16 Avenue	provide shade tree landscaping for pedestrian facilities where possible and landscaping to grassed medians where it is not possible
4	NW 13 Street [US 441]	FM: NW 39 Avenue [SR 222] TO: NW 6 Street [SR 20]	provide shade tree landscaping for pedestrian facilities where possible and landscaping to grassed medians where it is not possible
5	NW 39 Avenue [SR 222]	FM: NW 43 Street TO: NW 34 Street [SR 121]	provide shade tree landscaping for pedestrian facilities where possible and landscaping to grassed medians where it is not possible
6	Hawthorne Road [SR 20]	FM: SE 27 Street TO: SE 55 Boulevard	provide shade tree landscaping for pedestrian facilities where possible and landscaping to grassed medians where it is not possible
7	Archer Road [SR 24]	FM: SW 91 Street TO: Interstate 75	provide shade tree landscaping for pedestrian facilities where possible and landscaping to grassed medians where it is not possible
8	Newberry Road [SR 26]	FM: NW 98 Street TO: Interstate 75	provide shade tree landscaping for pedestrian facilities where possible and landscaping to grassed medians where it is not possible

* Projects must be constructible within the available State Road right-of-way.

Initial Landscaping Priorities were developed by Alachua County and City of Gainesville Public Works Department staff.

TABLE 4

FISCAL YEARS 2011/2012 - 2015/2016

PROJECT, DEVELOPMENT AND ENVIRONMENT (PD&E) STUDY PRIORITIES
(within the Gainesville Metropolitan Area)

(Note: Projects in italic text are partially funded, as identified in the Transportation Improvement Program.)

NUMBER	PROJECT	LOCATION	DESCRIPTION
1	SW 20 Avenue Reconstruction	FM: SW 62 Boulevard TO: SW 34 Street [SR 121]	conduct PD&E study in order to construct a 2-lane divided facility
2	NW 34 Street [SR 121]	FM: NW 16 Avenue TO: US 441	conduct PD&E study in order to add turnlanes in various locations

Initial PD&E Study Priorities were developed by MTPO staff, based on the Year 2025 Long Range Transportation Plan Cost Feasible Plan projects.

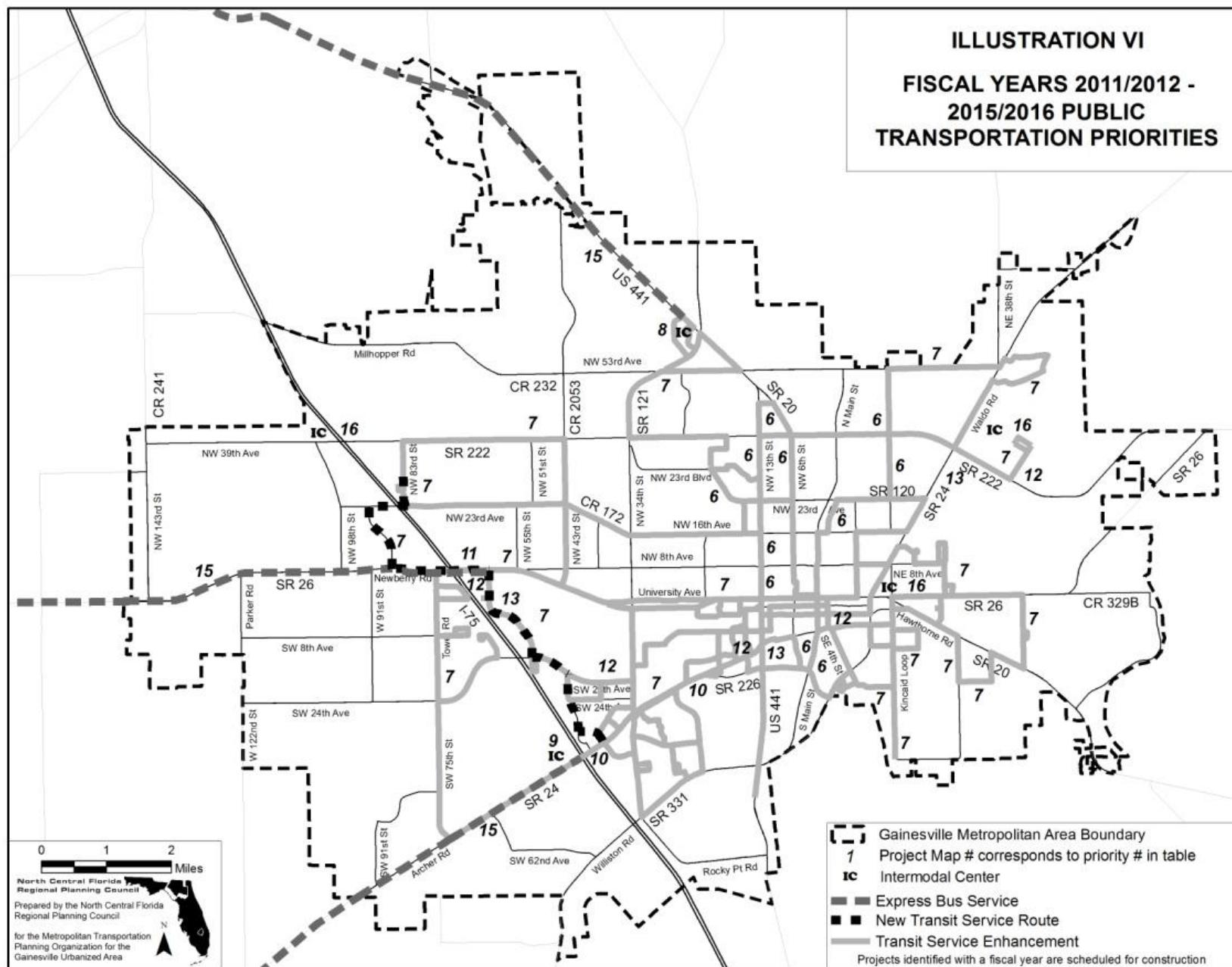


TABLE 5

**FISCAL YEARS 2011/2012 - 2015/2016
PUBLIC TRANSPORTATION PRIORITIES
(within the Gainesville Metropolitan Area)**

(Note: Projects in italic text are partially funded, as identified in the Transportation Improvement Program.)

NUMBER	PROJECT	LOCATION	DESCRIPTION
<i>1</i> Funded Annually	<i>Block Grant- Public Transit Operating</i>	<i>Regional Transit System (RTS) Systemwide</i>	<i>Operating Assistance [Funded annually by State]*</i>
<i>2</i> Partially Funded	<i>Enhance Bus Service Facilities</i>	<i>RTS Systemwide</i>	<i>Design, engineering and construction of RTS maintenance facilities [\$47 million unfunded]</i>
<i>3</i> Partially Funded	<i>Capital Equipment- purchase of rolling stock</i>	<i>RTS Systemwide</i>	<i>50 new buses for replacement of aged fleet and expansion of services, including vehicles and service vehicles</i>
4	Regional Intermodal Transportation Center	AT: Archer Road [SR 24] & SW 16 Avenue [SR 226] intersection	Planning, design, engineering and construction of a regional multimodal regional transportation center [site not determined]
5	Commuter Assistance	RTS Systemwide	Commuter Assistance Grants
6	Enhance Bus Service	RTS Systemwide	Implement increases of service frequencies of routes and extended hours of service according to the RTS Transit Development Plan and MTPO 2025 Transportation Plan
7	Service Development Funding - to include any of the TDP service enhancements	RTS Systemwide	Implementation of new routes, increased frequencies of routes and extended hours of service as per RTS Transit Development Plan, MTPO 2025 Transportation Plan and City Comprehensive Plan
8	Park-and-Ride Lot with bus service	AT: US 441/SR 121	Construct park-n-ride lot with transit service
9	Archer Road [SR 24] Intermodal Center [Butler Plaza]	AT: Interstate 75	Construct transit transfer facility with park-n-ride lot- Butler Plaza
10	Capital Equipment- Purchase Fare Collection Equipment	RTS Systemwide	Purchase new fareboxes for existing fleet, upgrade vault, ticket vending and card service equipment

TABLE 5 (Continued)

**FISCAL YEARS 2011/2012 - 2015/2016
PUBLIC TRANSPORTATION PRIORITIES
(within the Gainesville Metropolitan Area)**

(Note: Projects in italic text are partially funded, as identified in the Transportation Improvement Program.)

NUMBER	PROJECT	LOCATION	DESCRIPTION
11	Newberry Road [SR 26] Transfer Station with Park-and-Ride	Oaks Mall Area	Station would include park-and-ride lot with connections to future BRT service
12	Capital- Construct BRT Stations	Along Preferred Configuration	Construct transit stations along preferred BRT configuration(s)
13	Service- Bus Rapid Transit (BRT)	Preferred BRT Configuration	Implement BRT service according to BRT Study and System Map
14	Capital- Construct Park-And-Ride Lots to Support Express Bus Service	Transportation Corridors- State Road 20; State Road 26; State Road 24; State Road 222; & US 441	Locations and funding to be determined
15	Limited Stop Bus Service to Outlying Municipalities or Unincorporated Alachua County to Park-And-Ride Lots or Traditional Neighborhood developments	Transportation Corridors- State Road 20; State Road 26; State Road 24; State Road 222; & US 441	Initiate full funding agreement with Alachua County for services outside Gainesville City Limit, including ADA trips. Implement park-and-ride service from areas outside Gainesville City Limit into the City of Gainesville, Cities to include Alachua, Archer, Hawthorne, High Springs and Newberry
16	Intermodal Centers	AT: Five Points- [SR 20 @ SR 24]; Gainesville Regional Airport; SpringHills/Santa Fe College [SR 222 @ I-75]; & Archer Road [SR 24] & Tower Road intersection	Construct transit transfer facility with park-n-ride lot [no sites determined]

* Block Grant program is an annual formula program with funds provided by State legislation.

Initial Public Transportation Priorities were developed by Regional Transit System (RTS) staff, based on the RTS Transit Development Plan.

(page left blank intentionally)

TABLE 6

**FISCAL YEARS 2011/2012 - 2015/2016
RIGHT-OF-WAY (ROW) PRIORITIES
(within the Gainesville Metropolitan Area)**

(Note: Projects in italic text are partially funded, as identified in the Transportation Improvement Program.)

NUMBER	PROJECT	LOCATION	DESCRIPTION
1	SE 16 Avenue [SR 226]	FM: Main Street [SR 329] TO: Williston Road [SR 331]	Acquire necessary ROW for reconstruction from 2-Lane to 4-Lane facility with instreet bikelanes
2	SW 20 Avenue Reconstruction	FM: SW 62 Boulevard TO: SW 34 Street [SR 121]	Acquire necessary ROW for reconstruction implementing the SW 20 Avenue Corridor Planning Study recommendations
3	NW 34 Street [SR 121]	FM: NW 16 Avenue TO: US 441	Acquire necessary ROW for construction of center turnlanes along this facility
4 <i>Partially Funded</i>	<i>Depot Avenue Corridor</i>	<i>FM: SW 13 Street [US 441] TO: Williston Road [SR 331]</i>	<i>Acquire necessary ROW for reconstruction of existing facilities</i>

Initial ROW Priorities were developed by MTPO staff, based on the Year 2025 Long Range Transportation Plan Cost Feasible Plan projects.

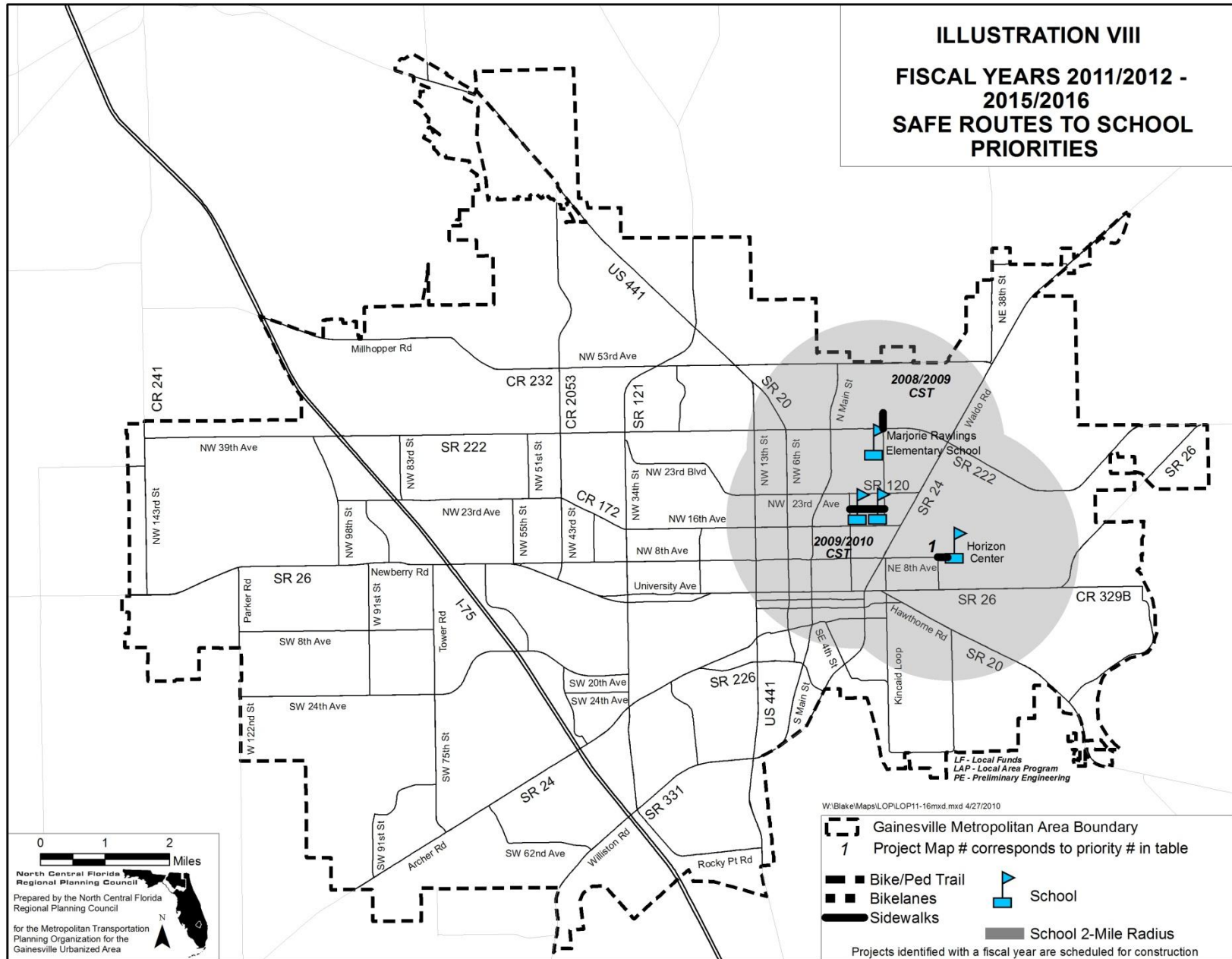


TABLE 7

**FISCAL YEARS 2011/2012 - 2015/2016
SAFE ROUTES TO SCHOOL* PRIORITY
(within the Gainesville Metropolitan Area)**

(Note: Projects in italic text are partially funded, as identified in the Transportation Improvement Program.)

NUMBER	PROJECT	LOCATION	DESCRIPTION
1	NE 8 Avenue	FM: NE 25 Street TO: 2800 Block	Construct pedestrian access to the Horizon Center

* Kindergarten through 8-Grade within a 2-mile radius of a school campus

Initial Safe Routes to School Priorities were developed by the Alachua County Traffic Safety Team.

ILLUSTRATION IX

FISCAL YEARS 2011/2012 - 2015/2016 SAFETY PRIORITIES

0 1 2 Miles

North Central Florida Regional Planning Council

Prepared by the North Central Florida Regional Planning Council

for the Metropolitan Transportation Planning Organization for the Gainesville Urbanized Area

Legend:

- 1 Project Map # corresponds to priority # in table
- Safety Study Area
- Road Safety Modifications
- Sidewalks
- Bike Facility Modifications
- Bike/Pedestrian Facility Modifications

Projects identified with a fiscal year are scheduled for construction

TABLE 8
FISCAL YEARS 2011/2012 - 2015/2016
SAFETY PRIORITIES
(within the Gainesville Metropolitan Area)

NUMBER	PROJECT	LOCATION	DESCRIPTION
1 <i>Partially Funded</i>	SW 20 Avenue	AT: SW 61 Street	Install eastbound left turnlane on SW 20 Avenue
2	Interstate 75 Interchange	AT: NW 39 Avenue [SR 222]	Lengthen the northbound exit ramp to NW 39 Avenue, plus related safety and intersection modifications at Interstate 75 Exit 390
3	SW 62 Boulevard	AT: NW 4 Place / Oaks Mall entrance	Access management*
4	Hidden Oaks Elementary School Right Turnlane	AT: NW 23 Avenue / Fort Clarke Boulevard	Construct right turnlane into school
5	NW 13 Street [US 441]	AT: NW 6 Street [SR 20]	Realign intersection
6	SW 34 Street [SR 121]	AT: SW 35 Place	Intersection modifications

*At this intersection, the observed major crash pattern is angle collisions involving southbound through and eastbound left-turning vehicles. Eastbound vehicles exiting the mall fail to yield the right-of-way and collide with southbound vehicles. This type of crash accounted for 82% of all crashes at this intersection. Peak periods were observed between 1:00 pm to 2:00 pm and 5:00 pm to 6:00 pm. Therefore, explore the possibility of a raised median on NW 62 Boulevard to restrict turning movements, particularly eastbound left. Traffic exiting the mall traveling towards north has several other exit options with signalized and non-signalized driveways along Newberry Road and a signalized driveway at NW 62 Street & NW 1 Place.

Initial Safety Priorities were developed by the Alachua County Traffic Safety Team.

ILLUSTRATION X
FISCAL YEARS 2011/2012 -
2015/2016 STRATEGIC
INTERMODAL SYSTEM PRIORITIES

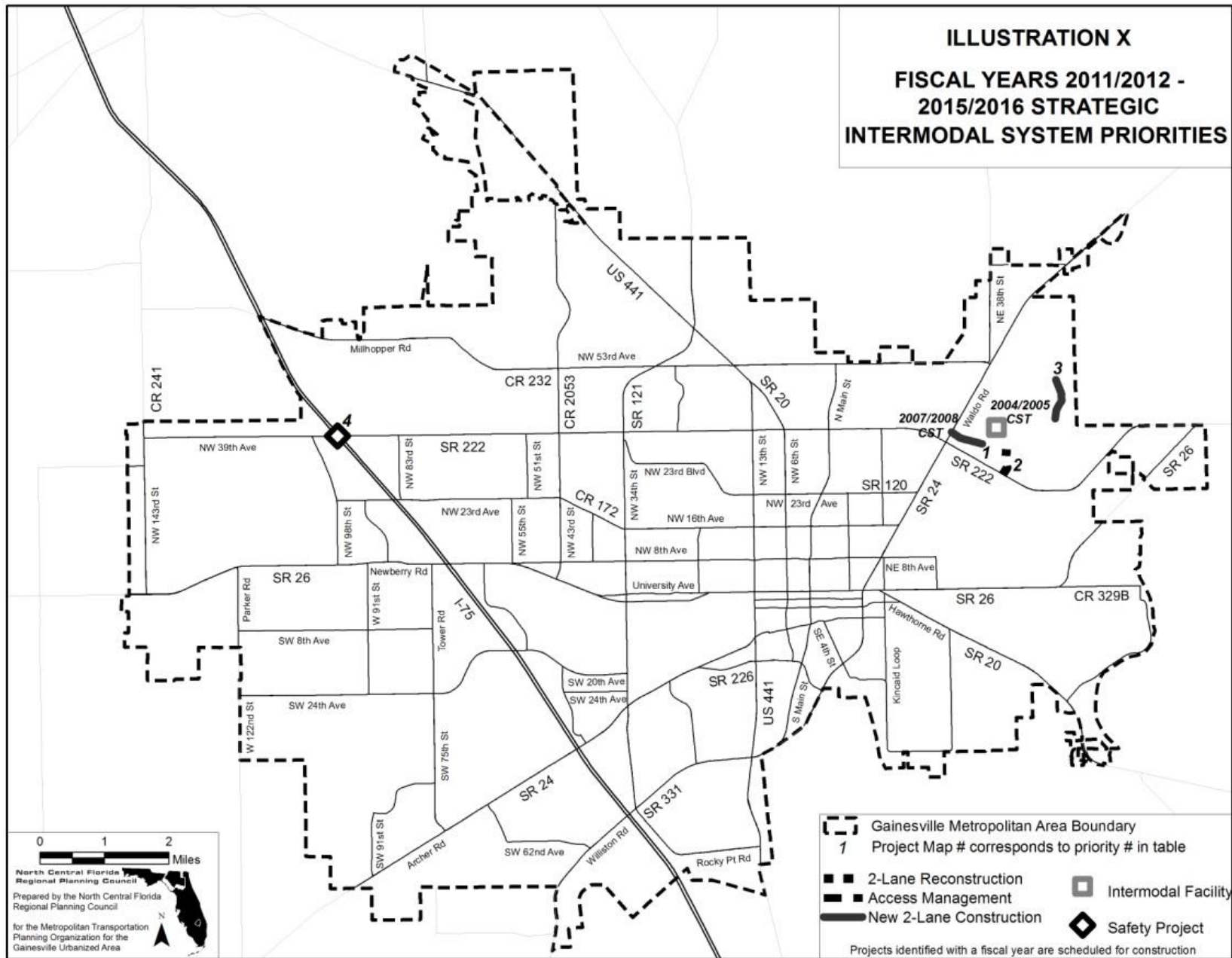


TABLE 9

FISCAL YEARS 2011/2012 - 2015/2016

STRATEGIC INTERMODAL SYSTEM PRIORITIES

(within the Gainesville Metropolitan Area)

(Note: Projects in italic text are partially funded, as identified in the Transportation Improvement Program.)

NUMBER	PROJECT	LOCATION	DESCRIPTION
<i>1</i> <i>Partially</i> <i>Funded</i>	<i>New gateway entrance to the Gainesville Regional Airport from Waldo Road [SR 24]</i>	<i>FM: Waldo Road [SR 24]</i> <i>TO: Airport Terminal</i> <i>(north of N 39 Avenue [SR 222])</i>	<i>Ingress-egress to the airline terminal and modal connectivity to the north central Florida region</i>
2	NE 39 Avenue [SR 222] access to airport	FM: NE 39 Avenue [SR 222] TO: Airport Terminal (Gainesville Regional Airport)	Reconfigure ingress-egress, improve curb-and-gutter system, add bike lanes and sidewalks, install stormwater drainage, install traffic guidance system of signs and signals; and install bike lockers
3	Extension of Airport Industrial Park Road	FM: airport service road TO: NE 49 Road (east end of Airport Industrial Park)	Extend existing service road to provide access to Waldo Road (Extend existing access road through east end of Airport Industrial Park, from Waldo Road [SR 24])
4	Interstate 75 Interchange	AT: NW 39 Avenue [SR 222]	Lengthen the northbound exit ramp to NW 39 Avenue, plus related safety and intersection modifications at Interstate 75 Exit 390

Note: The MTPO endorses the priorities #1, #2, and #3 listed above:

1. provided they do not compete with roadway capacity construction funding typically available from the Surface Transportation Program (STP); and
2. with the understanding that these funds do not come from existing funds that could be used for other projects within the Gainesville Metropolitan Area.

Initial SIS Priorities were developed by Gainesville Regional Airport staff.

TABLE 10

**FISCAL YEARS 2011/2012 - 2015/2016
SURFACE TRANSPORTATION PROGRAM (STP) FUND PRIORITIES
(within the Gainesville Metropolitan Area)**

(Note: Projects in italic text are partially funded, as identified in the Transportation Improvement Program.)

NUMBER	PROJECT	LOCATION	DESCRIPTION
1	SE 16 Avenue [SR 226]	FM: Main Street [SR 329] TO: Williston Road [SR 331]	Reconstruct from 2-Lane to 4-Lane facility with instreet bikelanes
2	SW 20 Avenue Reconstruction	FM: SW 62 Boulevard TO: SW 34 th Street [SR 121]	Reconstruct implementing the SW 20 Avenue Corridor Planning Study recommendations
3	NW 34 Street [SR 121]	FM: NW 16 Avenue TO: US 441	Construction of center turnlanes along this facility
<i>4 Partially Funded</i>	<i>Depot Avenue Corridor</i>	<i>FM: SW 13 Street [US 441] TO: Williston Road [SR 331]</i>	<i>Reconstruction of existing facilities</i>

Initial STP Fund Priorities were developed by MTPO staff, based on the Year 2025 Long Range Transportation Plan Cost Feasible Plan projects

TABLE 11

**FISCAL YEARS 2011/2012 - 2015/2016
TRAFFIC OPERATIONS PRIORITIES-
STATE HIGHWAY SYSTEM (SHS) ONLY
(within the Gainesville Metropolitan Area)**

(Note: Projects in italic text are partially funded, as identified in the Transportation Improvement Program.)

NUMBER	PROJECT	LOCATION	DESCRIPTION
1	Santa Fe College Area	Areawide	Traffic analysis on/off campus
2	Newberry Road [SR 26]	FM: Ft Clarke Boulevard TO: NW 8 Avenue	Corridor/area study to look at options to address traffic flow on Newberry Road, including intersection modifications
3	SW 34 Street [SR 121]	AT: Archer Road [SR 24]	Add right turnlanes
4	NW 13 Street [US 441]	AT: NW 6 Street [SR 20]	Intersection realignment/construction/signalization
5	NW 13 Street [US 441]	FM: 2100 block TO: 2200 block	Access management and pedestrian refuge islands
6	SW 13 Street [US 441]	AT: Archer Road [SR 24]	Signal reconstruction and retaining wall modifications
7	NE 39 Avenue [SR 222]	AT: NE 2 Street (See Appendix H)	Realign intersection and install horizontal mast arm traffic signals
8	SW 34 Street [SR 121]	AT: Radio Road AT: SW20 Avenue	Traffic signal reconstruction to mast arms
9 <i>Partially Funded</i>	<i>Archer Road [SR 24]</i>	<i>AT: Newell Drive AT: SW 18 Street/VA</i>	<i>Traffic signal reconstruction to mast arms</i>
10	University Avenue [SR 26]	AT: W 3 Street, W 2 Street, W 1 Street, E 1 Street & E 3 Street	Replace five existing galvanized mast arms with MTPO-approved mast arms
11	Traffic Signal Upgrade-Non-SHS	At various intersections (see Appendix H)	Replace existing signal with horizontal mast arm signals

Initial Traffic Operations Priorities were developed by Alachua County and City of Gainesville Public Works Department staff.

TABLE 12

**FISCAL YEARS 2011/2012 - 2015/2016
TRANSIT CORRIDOR DEVELOPMENT PRIORITIES
(within the Gainesville Metropolitan Area)**

NUMBER	PROJECT	LOCATION	DESCRIPTION
1	Newberry Road [SR 26]	FM: City of Newberry TO: City of Gainesville	Express bus service from Newberry Road park-n-ride lot to the City of Gainesville
2	Archer Road [SR 24]	FM: City of Archer TO: Gainesville	Express bus service from Archer Road park-n-ride lot to the City of Gainesville

Initial Transit Corridor Development Priorities were developed by MTPO staff, based on the Regional Transit System Transit Development Plan.

TABLE 13

**FISCAL YEARS 2011/2012 - 2015/2016
TRANSPORTATION DISADVANTAGED PRIORITIES-
TRANSPORTATION DISADVANTAGED TRUST FUND
(Alachua County Areas Outside of the Gainesville Metropolitan Area)**

NUMBER	PROJECT	LOCATION	DESCRIPTION
1	Provision of paratransit trips for vital medical purposes (dialysis, cancer care).	Areas outside of the Gainesville Metropolitan Area	Provide paratransit trips to eligible individuals with state TD Trust Funds.
2	Provision of paratransit trips for medical purposes (doctor appointments, pharmacy, physical therapy).	Areas outside of the Gainesville Metropolitan Area	Provide paratransit trips to eligible individuals with state TD Trust Funds.
3	Provision of paratransit trips for employment purposes.	Areas outside of the Gainesville Metropolitan Area	Provide paratransit trips to eligible individuals with state TD Trust Funds.
4	Provision of paratransit trips for shopping purposes.	Areas outside of the Gainesville Metropolitan Area	Provide paratransit trips to eligible individuals with state TD Trust Funds.
5	CTC ¹ Paratransit Van Fleet Expansion- TD Trust Funds	Countywide	Purchase two lift-equipped paratransit vans each year with any TD Trust Funds remaining after all TD Trust Fund paratransit trip priorities have been fulfilled.

- Notes: 1. The grant funds allocated from the TD Trust Fund are for the specific purpose of purchasing passenger trips for non-sponsored transportation disadvantaged individuals, or for equipment to be utilized by a CTC. Twenty-five percent of the TD Trust Fund allocation may be spent to purchase capital equipment.
2. The Alachua County Transportation Disadvantaged Coordinating Board, in cooperation with the CTC, prioritize the use of the state TD Trust Funds. The current and past TD Trust Fund allocations are sufficient to provide trips under priorities 1 and 2 on a first come, first served basis.

Initial Transportation Disadvantaged Priorities were developed by the Alachua County Transportation Disadvantaged Coordinating Board.

¹ CTC- Community Transportation Coordinator

TABLE 14

**FISCAL YEARS 2011/2012 - 2015/2016
TRANSPORTATION DISADVANTAGED PRIORITIES-
FEDERAL TRANSIT ADMINISTRATION SECTION 5311-
NONURBANIZED AREA FORMULA PROGRAM
(Alachua County Areas Outside of the Gainesville Metropolitan Area)**

NUMBER	PROJECT	LOCATION	DESCRIPTION
1	Provision of paratransit trips that cannot be provided with TD Trust Funds.	Areas outside of the Gainesville Metropolitan Area	Provide paratransit trips to TD-eligible individuals.
2	MTPO ¹ Paratransit Van Fleet Expansion- Section 5311 funds	Countywide	Purchase two lift-equipped paratransit vans each year with any Section 5311 funding remaining after all Section 5311 paratransit trip priorities have been fulfilled.

Note: Capital and operating expenditures shall be in accordance with U.S.C. Section 5311 funding eligibility criteria.

¹ MTPO- Metropolitan Transportation Planning Organization

Initial Transportation Disadvantaged Priorities were developed by the Alachua County Transportation Disadvantaged Coordinating Board.

TABLE 15

**FISCAL YEARS 2011/2012 - 2015/2016
TRANSPORTATION DISADVANTAGED PRIORITIES-
FEDERAL TRANSIT ADMINISTRATION SECTION 5316-
JOB ACCESS AND REVERSE COMMUTE PROGRAM
(Gainesville Metropolitan Area)**

NUMBER	PROJECT	LOCATION	DESCRIPTION
1	Job Access and Reverse Commute (JARC) Program	Areas within the Gainesville Metropolitan Area and outside the Regional Transit System fixed-route Americans with Disabilities Act (ADA) service area	Use FTA grant to provide job access and job-related transportation to TD-eligible individuals.

Initial Transportation Disadvantaged Priorities were developed by the Alachua County Transportation Disadvantaged Coordinating Board.

TABLE 16

**FISCAL YEARS 2011/2012 - 2015/2016
TRANSPORTATION DISADVANTAGED PRIORITIES-
FEDERAL TRANSIT ADMINISTRATION SECTION 5317-
NEW FREEDOM PROGRAM
(Gainesville Metropolitan Area)**

NUMBER	PROJECT	LOCATION	DESCRIPTION
1	New Freedom Program	Areas within the Gainesville Metropolitan Area and outside the Regional Transit System fixed-route Americans with Disabilities Act (ADA) service area	Use FTA grant to provide paratransit service to disabled citizens

Initial Transportation Disadvantaged Priorities were developed by the Alachua County Transportation Disadvantaged Coordinating Board.

ILLUSTRATION XIV
FISCAL YEARS 2011/2016
2015/2016 TRANSPORTATION
REGIONAL INCENTIVE PROGRAM
(TRIP) PRIORITIES

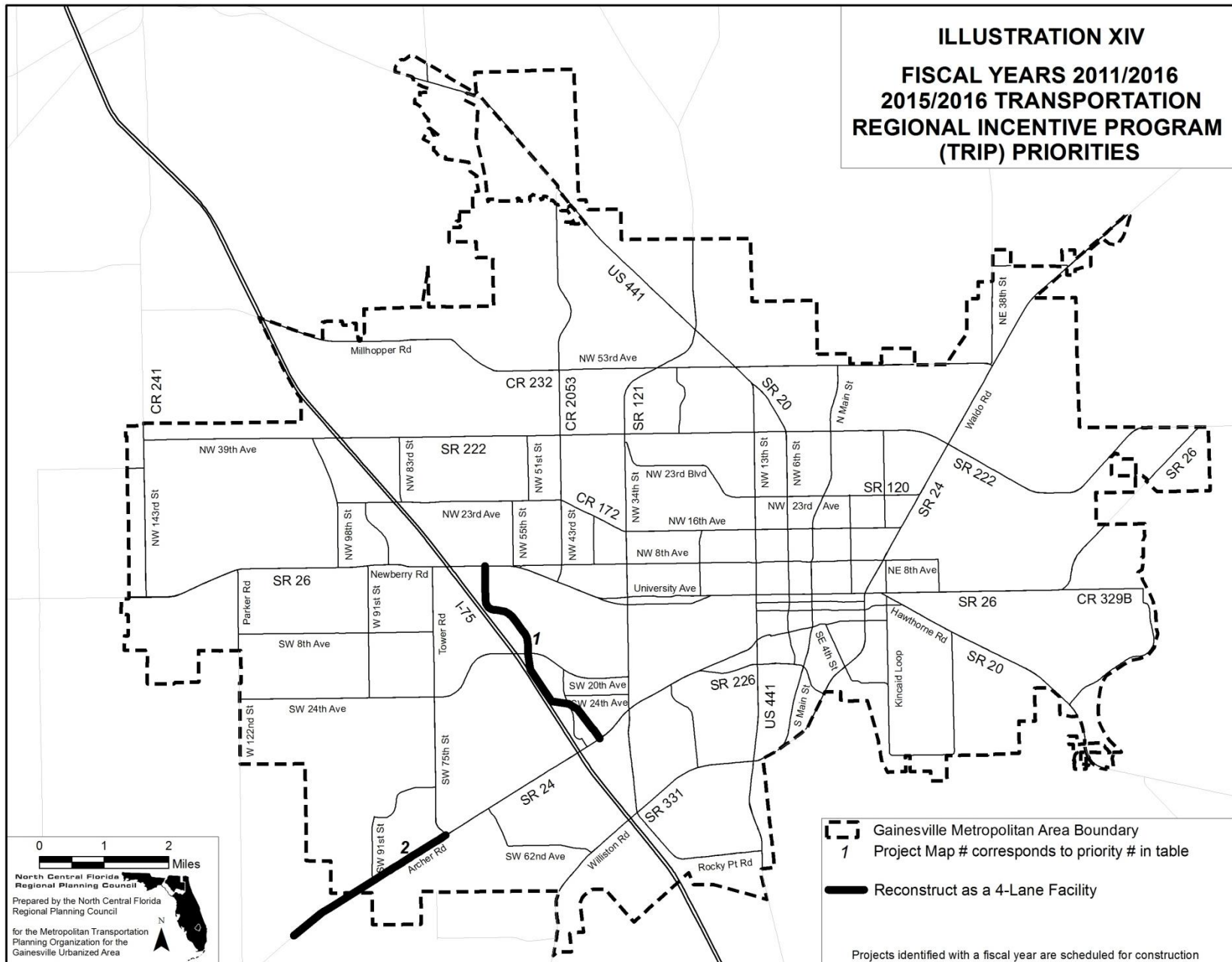


TABLE 17

FISCAL YEARS 2011/2012 - 2015/2016
TRANSPORTATION REGIONAL INCENTIVE PROGRAM (TRIP) PRIORITIES
(within the Gainesville Metropolitan Area)

(Note: Projects in italic text are partially funded, as identified in the Transportation Improvement Program.)

NUMBER	PROJECT	LOCATION	DESCRIPTION
1	SW 62 Connector	FM: Williston Road [SR 331] TO: Newberry Road [SR 26]	SW 62 Boulevard extension project, including extension of SW 40 Boulevard south to SW 34 Street, extending it east to connect at Williston Road – regionally significant project: 1. would alleviate congestion along Interstate-75 between Newberry Road and Williston Road, and other state roads such as Archer Road [SR 24], SW 34 Street [SR 121], Newberry Road [SR 26]; 2. improve system connectivity; and 3. add roadway capacity.
2	Archer Road	FM: Levy Countyline TO: Tower Road	Reconstruct as a 4-lane facility

Initial TRIP Priorities were developed by MTPO staff, based Alachua County and City of Gainesville Comprehensive Plan Transportation Elements.

(page left blank intentionally)

APPENDIX A

TRANSPORTATION PLANS AND PROGRAMS- EIGHT METROPOLITAN PLANNING FACTORS TO BE CONSIDERED

The following is a listing of the factors to be considered in the Safe, Accountable, Flexible, Efficient Transportation Equity Act: A Legacy for Users (SAFETEA-LU) that was enacted August 10, 2005 as Public Law 109-59. As required by SAFETEA-LU, these factors are being addressed in the development of transportation plans and programs.

FACTOR 1 The metropolitan transportation planning process shall provide for consideration of projects and strategies that will support the economic vitality of the metropolitan area, especially by enabling global competitiveness, productivity, and efficiency;

FACTOR 2 The metropolitan transportation planning process shall provide for consideration of projects and strategies that will increase the safety of the transportation system for motorized and nonmotorized users;

FACTOR 3 The metropolitan transportation planning process shall provide for consideration of projects and strategies that will increase the security of the transportation system for motorized and nonmotorized users;

FACTOR 4 The metropolitan transportation planning process shall provide for consideration of projects and strategies that will increase the accessibility and mobility options available to people and for freight;

FACTOR 5 The metropolitan transportation planning process shall provide for consideration of projects and strategies that will protect and enhance the environment, promote energy conservation, and improve quality of life;

FACTOR 6 The metropolitan transportation planning process shall provide for consideration of projects and strategies that will enhance the integration and connectivity of the transportation system, across and between modes, for people and freight;

FACTOR 7 The metropolitan transportation planning process shall provide for consideration of projects and strategies that will promote efficient system management and operation; and

FACTOR 8 The metropolitan transportation planning process shall provide for consideration of projects and strategies that will emphasize the preservation of the existing transportation system.

(Page left blank intentionally)

APPENDIX B

ROADS OPERATING AT AN UNACCEPTABLE HIGHWAY LEVEL OF SERVICE

(page left blank intentionally)

**ROADS OPERATING AT AN UNACCEPTABLE HIGHWAY LEVEL OF SERVICE
GAINESVILLE METROPOLITAN AREA, 2008
[does not include reserve trips]**

ROADWAY FACILITY	FROM	TO	2008 AADT	2008 LOS	2007 MSV	2008 MSV
SW 13 ST. [US 441] (S-3)	ARCHER RD.	UNIVERSITY AVE.	34,500	F	28,900	28,200
NW 13 ST [US 441]. (S-4)	UNIVERSITY AVE.	NW 29 RD.	33,000	F	28,900	28,200
ARCHER RD. [SR 24] (S-11)	SW 16 AVE.	SW 13 ST.	33,500	F	28,900	28,200
NEWBERRY ROAD [SR 26] (S-14)	NW 122 ST.	INTERSTATE 75 (West Ramp)	38,000	F	34,700	35,500
NEWBERRY ROAD [SR 26] (S-15)	INTERSTATE 75 (West Ramp)	NW 8 AVENUE	51,000	F	44,700	43,700
UNIVERSITY AVE. [SR 26] (S-18)	GALE LEMERAND DR.	W 13 ST.	30,500	E	28,900	28,200
SW 2 AVE. [SR 26A] (S-21)	NEWBERRY RD.	SW 34 ST.	14,900	E	13,230	12,495
SW 2 AVE. [SR 26A] (S-22)	SW 34 ST.	UNIVERSITY AVE.	13,650	F	13,120	12,160
NW 34 ST. [SR 121] (S-25)	UNIVERSITY AVE.	NW 16 AVE.	19,250	F	16,170	15,960
ARCHER RD. [SR 24] (S-47)	GMA BOUNDARY	SW 75 ST.	19,500	F	16,275	15,960
ARCHER RD. [SR 24] (S-55)	SW 34 ST.	SW 16 AVE.	54,500	F	53,500	50,300
NW 23 AVE. (A-9)	NW 98 ST.	NW 55 ST.	17,034	F	15,580	15,675
SW 75 ST. (A-13)	ARCHER RD.	SW 8 AVE.	27,680	F	15,580	15,675
SW 20 AVE. (A-15)	SW 75 ST.	SW 62 BD	16,595	F	15,580	15,675
SW 20 AVE. (A-16)	SW 62 BD.	SW 34 ST.	22,833	F	15,580	15,675
RADIO RD./MUSEUM DR. (G-32)	SW 34 ST.	SW 13TH ST.	13,506	F	13,230	10,725

Maximum service volume (MSV) for LOS D is not attainable (NA).

* Roadway is within the City of Gainesville Transportation Concurrency Exception Area (TCEA).

(page left blank intentionally)

APPENDIX C

YEAR 2025 LIVABLE COMMUNITY REINVESTMENT PLAN (GAINESVILLE METROPOLITAN AREA)

LONG RANGE TRANSPORTATION PLAN TABLE 1

YEARS 2011 TO 2025 COST FEASIBLE PLAN (FOR ENHANCEMENT PROJECTS- SEE TABLE 5)

FISCAL YEAR	CUMULATIVE REVENUE (IN MILLIONS)	PROJECT DESCRIPTION	COST (IN MILLIONS)
2011	\$2.76	Traffic Management System- Update and construction of an integrated traffic signalization system	\$16.00
2012	\$5.52		
2013	\$8.28		
2014	\$11.04		
2015	\$13.80		
2016	\$16.26		
2017	\$18.72	SE 16 Avenue [SR 226] - widen to four lane divided	\$5.28
2018	\$21.18		
2019	\$23.64	SW 20 Avenue Reconstruction	\$12.00
2020	\$26.10		
2021	\$28.58		
2022	\$31.06		
2023	\$33.54		
2024	\$36.02	NW 34 Street [SR 121] Turnlanes	\$1.75
2025	\$38.50	Depot Avenue Corridor Reconstruction (total project cost is \$15.84 million, of which \$4.8 million is funded with SAFETEA-LU High PriorityProject funds) [FN # 4205371]	\$3.47
	\$8.20	Archer Road/SW 16 Avenue- construction of intersection modifications at Archer Road/SW 16 Avenue and Archer Road/Gale Lemerand Drive, including access on a portion of Archer Road and a new north-south connection between Archer Road and SW 16 Avenue and SW 16 Avenue with associated intersection modifications	\$8.20
TOTAL	\$46.70		\$46.70

**LONG RANGE TRANSPORTATION PLAN
TABLE 2**

**YEARS 2006 TO 2010 COMMITTED PROJECTS
(FOR ENHANCEMENT PROJECTS- SEE TABLE 3)**

FISCAL YEAR	PROJECT DESCRIPTION	AMOUNT PROGRAMMED (IN MILLIONS)
2006	Airport Intermodal Facility [FN # 4068473]	\$0.30
	SW 24 Avenue- Reconstruct as two-lane divided	\$10.00
	University of Florida Pedestrian and Service Access Improvements (Section 117 Earmark) [FN # 2113654]	\$1.00
2007	-	-
2008	Main Street [SR 329]- Reconstruct as 3-lane undivided (Depot Avenue to N. 8 Avenue) [FN # 2077851]	\$14.20
2009	Hull Road Right-Of-Way [FN # 2113352]	\$2.23
2010	Hull Road Right-Of-Way [FN # 2113352]	\$1.93

**LONG RANGE TRANSPORTATION PLAN
TABLE 3**

YEARS 2006 TO 2010 COMMITTED ENHANCEMENT PROJECTS

FISCAL YEAR	PROJECT DESCRIPTION	AMOUNT PROGRAMMED (IN MILLIONS)
2006	Gainesville Train Depot Restoration [FN # 4046281]	\$0.750
	Gainesville-Hawthorne Trail Urban Connector [FN # 4046251]	\$0.480
2007	W. 6 Street [SR 20] Rail/Trail [FN # 2113632]	\$0.665
2008	-	-
2009	Hull Road Extension Bicycle/Pedestrian Trail [FN # 2112452]	\$0.002
2010	-	-
2011	Archer Road [SR 24] Rail-Trail Segment 2 [FN # 2078376]	\$0.645

**LONG RANGE TRANSPORTATION PLAN
TABLE 4**

YEARS 2007 TO 2011 SAFETEA-LU HIGH PRIORITY PROJECTS

PROJECT DESCRIPTION	AMOUNT PROGRAMMED (IN MILLIONS)
Airport Access Road Construction [FN # 2076144]	\$1.60
SW 62 - 24 Avenue [FN # 2113653]	\$1.60
Improve North-South Corridor between Archer Road and Newberry Road to provide congestion relief to Interstate 75 corridor, State Road 121, State Road 24 and State Road 26 [FN # 2113653]	\$2.40 \$1.50
Depot Avenue Reconstruction- (total project cost is \$15.8) [FN # 4205371]	\$4.80
NE 19 Street/NE 19 Terrace [FN # 4205411]	\$0.80
NE 19 Drive/NE 20 Street and NE 25 Street [FN # 4205412]	\$1.60
Regional Transit System (RTS) Bus Facility Expansion [FN # 4068476]	\$3.34
RTS Facility Expansion [FN # 4068476]	\$1.00
RTS Bus Rapid Transit Study [FN # 4068475]	\$0.42
RTS Bus Replacement [FN # 4068472]	\$3.30

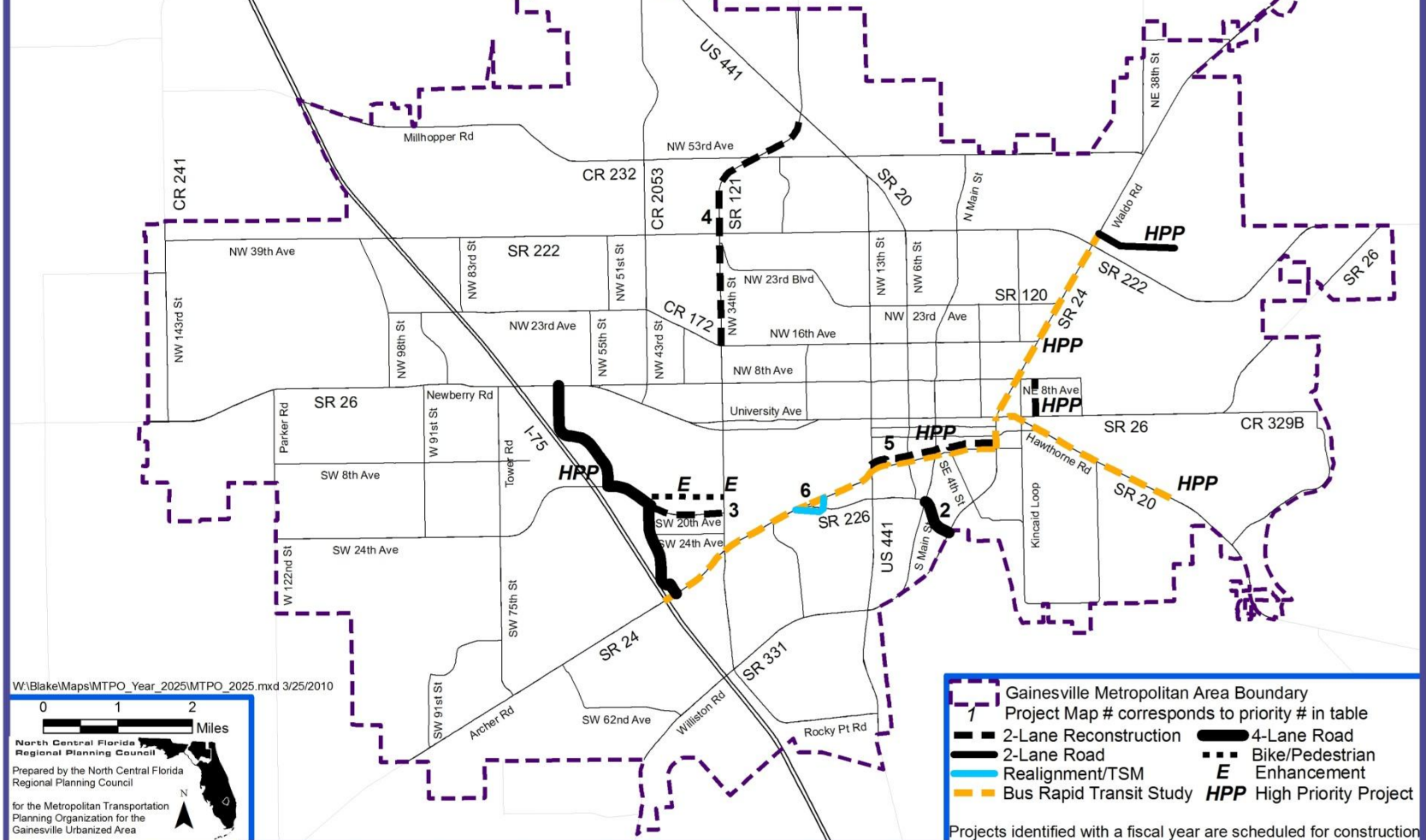
**LONG RANGE TRANSPORTATION PLAN
TABLE 5**

YEARS 2011 TO 2024 ENHANCEMENT PROJECTS

FISCAL YEAR	CUMULATIVE REVENUE (IN MILLIONS)	PROJECT DESCRIPTION	COST (IN MILLIONS)
2011	\$0.42	Hull Road Bicycle/Pedestrian Facility	\$1.04
2012	\$0.84		
2013	\$1.26		
2014	\$1.68	Bicycle/Pedestrian Crossing at Hull Road and SW 34 Street [SR 121]	\$4.03
2015	\$2.10		
2016	\$2.48		
2017	\$2.86		
2018	\$3.24		
2019	\$3.62		
2020	\$4.00		
2021	\$4.32		
2022	\$4.64		
2023	\$4.96		
2024	\$5.28		
2025	\$5.60		
TOTAL	\$5.60	-	\$5.07

MTPO YEAR 2025 COST FEASIBLE LIVABLE COMMUNITY REINVESTMENT PLAN PRIORITY RANKING OF PROJECTS **ADOPTED NOVEMBER 3, 2005 AMENDED MAY 31, 2007**

Note -Priority 1 is a systemwide coordinated
Traffic Management System
-Priority 6 is the Archer Road @ SW 16th Avenue
intersection modifications



W:\Blake\Maps\MTPO_Year_2025\MTPO_2025.mxd 3/25/2010

0 1 2
Miles

North Central Florida
Regional Planning Council

Prepared by the North Central Florida
Regional Planning Council

for the Metropolitan Transportation
Planning Organization for the
Gainesville Urbanized Area

APPENDIX D

REGIONAL TRANSIT SYSTEM SUPPLEMENTAL INFORMATION

(page left blank intentionally)

**FISCAL YEARS 2011/2012 - 2015/2016
PUBLIC TRANSPORTATION PRIORITIES
SUPPLEMENTAL INFORMATION
PRIORITY 6 AND 7 PROJECTS**

PROJECT	LOCATION	DESCRIPTION
PRIORITY 6 EXISTING ROUTE SERVICE ENHANCEMENTS		
Enhance bus service via N 23 Avenue	RTS Route 10	Increase fixed-route service to 40 minutes
Enhance bus service via W 43 Street	RTS Route 43	Increase fixed-route service to 30 minutes
Enhance bus service via Archer Road	RTS Routes 1, 8 & 11	Extend fixed-route hours to 11:00 pm
Enhance bus service for southeast and northwest areas	RTS Routes 6 & 11	Increase fixed-route service to 30 minutes
Enhance bus service for southeast and northeast areas	RTS Routes 2 & 24	Increase fixed-route service to 30 minutes
Enhance Saturday service	RTS Routes 14, 75, 400, 402, 403, 404, 405, 406, 409 & 410	Extend fixed-route service to 7:58 pm
Enhance bus service via Archer Road and Tower Road	RTS Route 75	Increase fixed-route service to 35 minutes; extend Saturday fixed-route service to 7:58 pm; add Sunday fixed-route service; and increase weekend fixed-route service to 45 minutes
Enhance bus service for southeast area	RTS Route 7	Increase fixed-route service to 30 minutes
Enhance Sunday service	RTS Route 410	Add Sunday fixed-route service
PRIORITY 7 NEW TRANSIT ROUTES		
Enhance bus service via Fort Clarke Boulevard	RTS Route 23	Implement new route to provide service from the Oaks Mall to SFC
Enhance bus service from Urban Core to Airport Area	RTS Route 25	Implement new route to provide service from the University of Florida to the Airport Area
Enhance bus service via W 62 Boulevard and N 23 Avenue	RTS Route 62	Implement new route to provide service from Oaks Mall to Butler Plaza
Enhance bus service within Urban Core	RTS Route 46	Implement new circulator route to provide service between downtown and the University of Florida
Enhance bus service via N 39 Avenue	RTS Route 39	Implement new route to provide service from Spring Hill Development to Gainesville Regional Airport
Enhance bus service for southwest and northwest areas	RTS Route 44	Implement new route to provide service from Shands to Hunters Crossing

(page left blank intentionally)

APPENDIX E

SAFETY PROJECT

SUPPLEMENTAL MATERIAL

[There is no Safety Project Supplemental Material in Year 2010.]

(page left blank intentionally)

APPENDIX F

FEDERAL FUNDS OBLIGATION PROJECT LIST

FISCAL YEAR 2009

[10/01/2008 - 09/30/2009]

(page left blank intentionally)

10/16/09 16.12.38

PAGE: 1

FLORIDA DEPARTMENT OF TRANSPORTATION
=====

FEDERAL OBLIGATIONS REPORT

INPUT SELECTION

FEDERAL FISCAL YEAR = 2009 (10/01/2008 - 09/30/2009)

SORT = S (BY ITEM)

DISTRICT/COUNTY/STATEWIDE = GAINESVILLE MTPD

10/16/09
16.12.38
GAINESVILLE MTPO

FLORIDA DEPARTMENT OF TRANSPORTATION
FEDERAL OBLIGATIONS - PROJECT DETAIL
FFY 2009 (10/01/2008 - 09/30/2009)

PAGE 1
FPMOBL10(A)

HIGHWAYS

ITEM NO	DESCRIPTION	FUND	TYPE OF WORK	PRELIMINARY	RIGHT-OF-WAY	RAILROADS & UTILITIES	CONSTRUCTION	GRANTS & MISC.
RDWY ID	PROJ LGTH	FAC	EXIST/IMPROVE/ADD (LANES)	ENGINEERING				
FEDERAL AID NUMBER								
207352	SR 20							
	FROM SR 24 TO SE 14TH ST.							
ALACHUA								
26080000	.182 MI	3	RESURFACING	0	0	0	415,356	0
3761 036 P			SL					
2076144	SR 24/WALDO ROAD							
	@ GAINESVILLE REGIONAL AIRPORT							
ALACHUA								
26050000	.100 MI	2	NEW ROAD CONSTRUCTION	0	0	0	5,342	0
SFTL 218 R			HPP					
2076652	SR 26							
	FROM SR26A E /STADIUM DR TO SR 24/WALDO ROAD							
ALACHUA								
26070000	2.236 MI	4	RESURFACING	0	0	0	2,009,011	0
4121 011 P			SL					
2077963	SR 26							
	@ SR 222 & @ CR 234							
ALACHUA								
26130000	2.777 MI	2	INTERSECTION (MODIFY)	0	0	0	-1,468,249	0
4121 010 P			ACSA	0	0	0	1,489,304	0
			SA	0	0	0	21,055	0
			** ITEM TOTALS **					
2078311	US 301 / SR 26							
	CSX RAIL OVERPASS							
ALACHUA								
26060000	.660 MI	4	INTERSECTION (NEW)	111,185	0	0	0	0
4121 008 P			EB					
2078378	SR 24 (ARCHER ROAD)							
	FROM SW 40TH BLVD TO SR 121 (SW 34TH ST.)							
ALACHUA								
26090000	.949 MI	6	SAFETY PROJECT	184,563	0	0	0	0
3761 034 P			HSP					

*****HIGHLIGHTS*****										
ITEM NO	DESCRIPTION	*****				OLD ITEM				
COUNTY	TYPE OF WORK	*****								
RDWY ID	PROJ LGTH	EXIST/IMPROVE/ADD (LANES)	FUND	PRELIMINARY	RIGHT-OF-WAY	RAILROADS & UTILITIES	CONSTRUCTION	GRANTS & MISC.		
FEDERAL AID NUMBER	FAC	AUTH DATE		ENGINEERING						
2078379	SR 24 IN ARCHER									
FLORIDA NORTHERN RR	NEW INSTALLATION	RR#622511-D								
ALACHUA	RAILROAD CROSSING									
26090600	.091 MI	2	0							
3761 035 P	EB			0		165,000	0			
2113653	SW 62ND BLVD.									
4-LANE ARTERIAL CONNECTOR										
ALACHUA	PRELIMINARY ENGINEERING									
26000094	1.692 MI	2	0							
S124 002 R	S117			125,000	0	0				
2113655	SW 62ND BLVD.									
4 LANE ARTERIAL CONNECTOR										
ALACHUA	TRAFFIC OPS IMPROVEMENT									
26000094	1.692 MI	2	0							
SFT2 247 R	HPP			0						
SFT2 270 R	HPP			0						
SFT2 312 R	HPP			0						
S117 003 R	S117			0						
** ITEM TOTALS **										
2129498	I-75 OPERATIONAL									
IMPROVEMENT @ SR26										
ALACHUA	INTERCHANGE (MODIFY)									
26260000	.494 MI	0	0							
0752 140 I	NHAC			103,465	0	0				
4205371	DEPOT AVE/SW 9TH AVE									
FROM SW 13TH ST TO SE 3RD ST										
ALACHUA	FLEXIBLE PAVEMENT RECONSTRUCT.									
26090500	1.700 MI	2	2							
SFTL 238 R	HPP			750,400	0	0				
4205372	DEPOT AVE/SW 9TH AVE									
FROM MAIN STREET TO SE 7TH STREET										
ALACHUA	FLEXIBLE PAVEMENT RECONSTRUCT.									
26090500	.443 MI	2	2							
SFT2 238 R	HPP			0						

FLORIDA DEPARTMENT OF TRANSPORTATION
FEDERAL OBLIGATIONS - PROJECT DETAIL
FFY 2009 (10/01/2008 - 09/30/2009)

HIGHWAYS

10/16/09
16.12.38
GAINESVILLE MTFD

ITEM NO	DESCRIPTION	OLD ITEM					
*****	*****	*****					
COUNTY	TYPE OF WORK						
EDNY ID	PROJ LGTH	EXIST/IMPROVE/ADD (LANES)					
FEDERAL AID NUMBER	FAC	AUTH DATE	FUND	PRELIMINARY ENGINEERING	RIGHT-OF-WAY	RAILROADS & UTILITIES	CONSTRUCTION
							GRANTS & MISC.
4205411	NE 19 ST/NE 19 TERR						
ALACHUA	FROM NE 3RD AVE. TO NE 8TH AVE.						
26000058	NEW ROAD CONSTRUCTION						
SFT2 289 R	.405 MI	2	HPP	0	0	0	619,921
4205412	NE 25TH ST/NE 19 DR						
ALACHUA	FROM SR 26/UNIVERSITY BVD TO NE 8TH AVE.						
26000032	RESURFACING						
SFT2 290 R	.500 MI	2	HPP	0	0	0	1,239,840
4230281	SR 200 (US 301)						
ALACHUA	CSX RAILROAD OVERPASS						
26130000	INTERCHANGE (MODIFY)						
3114 030 P	1.898 MI	2	EBNH	0	0	0	10,277,711
4243661	SR 25 (US 441)						
ALACHUA	PAINES PRAIRIE PRESERVE VISITOR CENTER						
26010000	PRELIMINARY ENGINEERING						
SBFL 008 R	.010 MI	0	SB	120,000	0	0	0
8887 533 A			SB	40,000	0	0	0
			SB	160,000	0	0	0
	** ITEM TOTALS **						
4245211	I-75						
ALACHUA	FROM MARION C/L TO 3000' NORTH						
26260000	SAFETY PROJECT						
0753 153 I	.800 MI	0	IMAC	0	0	0	385,606
4246321	I-75 FRONTAGE ROAD						
ALACHUA	FROM US 441 TO END OF SECTION						
26260058	RESURFACING						
0752 144 I	1.550 MI	2	IMAC	25,538	0	0	0

10/16/09
16.12.38
GAINESVILLE MTPO

FLORIDA DEPARTMENT OF TRANSPORTATION
FEDERAL OBLIGATIONS - PROJECT DETAIL
FFY 2009 (10/01/2008 - 09/30/2009)

PAGE 4
FPMOBL10(A)

*****HIGHWAYS*****

ITEM NO	DESCRIPTION	OLD ITEM	PRELIMINARY	RIGHT-OF-WAY	RAILROADS & UTILITIES	CONSTRUCTION	GRANTS & MISC.
COUNTY	TYPE OF WORK		ENGINEERING				
FEDERAL AID NUMBER	EXIST/IMPROVE/ADD (LANES)	FUND					
SR	FAC	DATE					
4255521	SR 24/ALACHUA CO.,						
ALACHUA	XING 622511D-INSTALL LED LIGHTS						
	RAIL SAFETY PROJECT						
	0	0	0	0	13,036	0	0
00S2 046 J	RHP						
4262061	WEST 6TH STREET						
FROM: SE 2ND AVENUE TO: NW 16TH AVENUE							
ALACHUA	BIKE PATH/TRAIL						
	0	0	0	0	0	1,000,000	0
ARRA 042 B	FSSL		0	0	0	9,009	0
	SL		0	0	0	1,009,009	0
	** ITEM TOTALS **		0	0	0		
4262071	NE 8TH AVENUE						
FROM: SR 329/MAIN STREET TO: NE BLVD							
ALACHUA	RESURFACING						
2600032	2	0	0	0	0	300,000	0
ARRA 043 B	FSSL		0	0	0	2,703	0
	SL		0	0	0	302,703	0
	** ITEM TOTALS **		0	0	0		
4262081	SR 121/NW 34TH ST.						
FROM: SR 222/NW 39TH AVE TO: US 441							
ALACHUA	BIKE LANE/SIDEWALK						
2625000	2	0	0	0	0	1,000,000	0
ARRA 044 B	FSSL		0	0	0		
4262251	SR 45(US 41)						
@SW 30TH AVE							
ALACHUA	ADD TURN LANE(S)						
2603000	2	0	0	0	0	439,124	0
ARRA 045 B	FSSL		0	0	0		
4262281	CR 329/MAIN ST.						
FROM NW 8TH AVE TO NW 23RD AVE							
ALACHUA	RESURFACING						
2660000	4	0	0	0	0	951,007	0
ARRA 046 B	FSSL		0	0	0	9,910	0
	SL		0	0	0	960,917	0
	** ITEM TOTALS **		0	0	0		

10/16/09
16.12.38
GAINESVILLE MTPO

FLORIDA DEPARTMENT OF TRANSPORTATION
FEDERAL OBLIGATIONS - PROJECT DETAIL
FFY 2009 (10/01/2008 - 09/30/2009)
=====

PAGE 5
FPMOBL10(A)

HIGHWAYS

ITEM NO	DESCRIPTION	TYPE OF WORK	PRELIMINARY	RIGHT-OF-WAY	RAILROADS & UTILITIES	CONSTRUCTION	GRANTS & MISC.
RDWY ID	PROJ LGTH	EXIST/IMPROVE/ADD (LANES)	ENGINEERING				
FEDERAL AID NUMBER	FAC	AUTH DATE	FUND				
4262941	SW 122ND STREET						
FROM: SR 24	TO: SW 89TH AVENUE						
ALACHUA							
26000019	.343 MI	2	0	0	0	393,385	0
ARRA 048 B			FSSL	0	0	5,855	0
			SL	0	0	399,240	0
		** ITEM TOTALS **					
4263981	NW CR 235A						
FROM: US 441 (SR 25)	TO: SANTA FE HIGH SCHOOL						
ALACHUA							
26000000	1.100 MI	2	0	0	0	150,000	0
ARRA 038 B			FSSE	0	0	1,500	0
			SE	0	0	151,500	0
		** ITEM TOTALS **					
4264051	SW 8TH AVENUE						
FROM: SW 75TH ST/TOWER RD	TO: SW 67TH TERRACE						
ALACHUA							
26000000	1.000 MI	0	0	0	0	110,000	0
ARRA 039 B			FSSE	0	0	1,100	0
			SE	0	0	111,100	0
		** ITEM TOTALS **					
HIGHWAYS TOTALS:			28,105,575	1,460,151	0	178,036	26,467,388
							0

ITEM NO	DESCRIPTION	OLD ITEM					
COUNTY	TYPE OF WORK						
RWDY ID	PROJ LGTH	EXIST/IMPROVE/ADD	(LANES)				
FEDERAL AID NUMBER	FAC	AUTH DATE	FUND	PRELIMINARY ENGINEERING	RIGHT-OF-WAY	RAILROADS & UTILITIES	CONSTRUCTION
							MISC.
2140947	GAINSVILLE UPWP /PL						
FY 2008/2009 & 2009/2010	TRANSPORTATION PLANNING						
ALACHUA							
.000	0	0	0	550,864	0	0	0
0241 046 M	PL						
				550,864	0	0	0
PLANNING TOTALS:				550,864	0	0	0

10/16/09
16.12.38
GAINESVILLE MTEO

FLORIDA DEPARTMENT OF TRANSPORTATION
FEDERAL OBLIGATIONS - SYSTEM SUMMARY
FFY 2009 (10/01/2008 - 09/30/2009)

PAGE 1
FPMOBL0(B)

HIGHWAYS

WORK PROGRAM FUND	TOTAL	ENGINEERING	RIGHT-OF-WAY	UTILITIES	CONSTRUCTION	MISC.
ACSA - ADVANCE CONSTRUCTION (SA)	-1,468,249	0	0	0	-1,468,249	0
EB - EQUITY BONUS	10,277,711	111,185	0	165,000	10,277,711	0
EBNH - EQUITY BONUS SUPPLEMENTING NH	260,000	0	0	0	260,000	0
FSSE - FED STIMULUS, ENHANCEMENT	4,083,516	0	0	0	4,083,516	0
FSSL - FED STIMULUS, AREAS <= 200K	8,908,672	750,400	0	0	8,158,272	0
HPP - HIGH PRIORITY PROJECTS	184,563	184,563	0	0	0	0
HSP - SAFETY (HIWAY SAFETY PROGRAM)	411,144	25,538	0	0	385,606	0
IMAC - IM (AC/REGULAR)	103,465	103,465	0	0	0	0
NHAC - NH (AC/REGULAR)	13,036	0	0	13,036	0	0
RHP - RAIL HIGHWAY X-INGS - PROT DEV	1,489,304	0	0	0	1,489,304	0
SA - STP, ANY AREA	160,000	160,000	0	0	0	0
SB - SCENIC BYWAYS	2,600	0	0	0	2,600	0
SE - STP, ENHANCEMENT	2,451,844	0	0	0	2,451,844	0
SL - STP, AREAS <= 200K	951,784	135,000	0	0	826,784	0
SL17 - STP EARMARKS - 2005						
HIGHWAYS TOTALS:	28,105,575	1,460,151	0	178,036	26,467,388	0

10/16/09
16.12.38
GAINESVILLE MTPO

FLORIDA DEPARTMENT OF TRANSPORTATION
FEDERAL OBLIGATIONS - SYSTEM SUMMARY
FFY 2009 (10/01/2008 - 09/30/2009)

PTC: TRANSIT

PAGE 3
FM0BL10(B)

WORK PROGRAM FUND		TOTAL	ENGINEERING	RIGHT-OF-WAY	UTILITIES	CONSTRUCTION	MISC.
FSSL - FED STIMULUS, AREAS <= 200K		692,296	0	0	0	0	692,296
SA - STP, ANY AREA		250,000	0	0	0	0	250,000
TRANSIT TOTALS:		942,296	0	0	0	0	942,296
GRAND TOTALS:		29,598,735	2,011,015	0	178,036	26,467,388	942,296

WORK PROGRAM FUND	TOTAL	ENGINEERING	RIGHT-OF-WAY	UTILITIES	CONSTRUCTION	MISC.
ACSA - ADVANCE CONSTRUCTION (SA)	-1,468,249	0	0	0	-1,468,249	0
EB - EQUITY BONUS	276,185	111,185	0	165,000	0	0
EBNH - EQUITY BONUS SUPPLEMENTING NH	10,277,711	0	0	0	10,277,711	0
FSSE - FED STIMULUS, ENHANCEMENT	260,000	0	0	0	260,000	0
FSSL - FED STIMULUS, AREAS <= 200K	4,775,812	0	0	0	4,083,516	692,296
HPP - HIGH PRIORITY PROJECTS	8,908,672	750,400	0	0	8,158,272	0
IMAC - IM (AC/REGULAR)	184,563	184,563	0	0	0	0
IMAC - NH (AC/REGULAR)	411,144	25,538	0	0	385,606	0
NHAC - NH (AC/REGULAR)	103,465	103,465	0	0	0	0
PL - METRO PLAN (85% FA; 15% OTHER)	550,864	550,864	0	0	0	0
RHP - RAIL HIGHWAY X-INGS - PROT DEV	13,036	0	0	13,036	0	0
SA - STP, ANY AREA	1,739,304	0	0	0	1,489,304	250,000
SB - SCENIC BYWAYS	160,000	160,000	0	0	0	0
SE - STP, ENHANCEMENT	2,600	0	0	0	2,600	0
SL - STP, AREAS <= 200K	2,451,844	0	0	0	2,451,844	0
SL17 - STP, EARNINGS - 2005	351,784	125,000	0	0	826,784	0
GRAND TOTALS:	29,598,735	2,011,015	0	178,036	26,467,388	942,296

APPENDIX G

**SUPPLEMENTAL SURFACE TRANSPORTATION PROGRAM
(STP) FUND-ELIGIBLE PROJECTS**

(page left blank intentionally)

**ALACHUA COUNTY AND CITY OF GAINESVILLE
NONPRIORITIZED SURFACE TRANSPORTATION PROGRAM
(STP) FUND-ELIGIBLE PROJECTS**

PROJECT	LOCATION	DESCRIPTION
Archer Road	FM: SW 91 Street TO: SW 75 Street	Reconstruct as a 4-lane divided facility
County Road 225	AT: NE 53 Avenue	Reconstruct intersection and signalize
Lake Shore Drive/ County Road 329B	FM: Hawthorne Road TO: State Road 26	Mill and resurface; add paved shoulders and turnbays
North Main Street	FM: N 39 Avenue TO: N 53 Avenue	Mill and resurface
NE 8 Avenue	FM: N Main Street TO: NE Boulevard	Mill and resurface
Rocky Point Road	FM: Williston Road TO: SW 13 Street	Reconstruct with wider lanes, paved shoulders, turnbays; mill and resurface existing pavement
SE 4 Street	FM: Williston Road TO: Depot Avenue	Mill and resurface
SE 16 Avenue	FM: Main Street TO: Williston Road	Reconstruct as a 4-lane divided facility
State Roads 26/26A	FM: NW 38 Street TO: Gale Lemarand Drive	Implement one-way pair configuration
SW 8 Avenue	FM: SW 122 Street TO: Tower Road	Resurface/reconstruct; add paved shoulders and sidewalk on one side
SW 20 Avenue	AT: SW 34 Street	Construct grade-separated crossing
SW 35 Place	FM: SW 34 Street TO: SW 23 Terrace	Mill and resurface
SW 62 Boulevard	FM: SW 20 Avenue TO: Newberry Road	Mill and resurface
SW 91 Street	FM: SW 24 Avenue TO Newberry Road	Mill and resurface; add paved shoulders

(page left blank intentionally)

APPENDIX H

CITY OF GAINESVILLE PUBLIC WORKS DEPARTMENT SUPPLEMENTAL INFORMATION

(page left blank intentionally)

APPENDIX H

City of Gainesville Public Works Department February 25, 2010

Traffic Operations Priorities			
<i>Number</i>	<i>Project</i>	<i>Location (at)</i>	<i>Description</i>
1	NE 16th Ave	NE 9th St	Traffic signal reconstruction to mast arms
2	NW 16th Ave	NW 2nd St	Traffic signal reconstruction to mast arms
3	NW 16th Ave	NW 16th Ter	Traffic signal reconstruction to mast arms
4	NW 16th Ave	NW 22nd Ter	Traffic signal reconstruction to mast arms
5	NW 16th Blvd	NW 41st St	Traffic signal reconstruction to mast arms
6	NW 23rd Ave	NW 51st St	Traffic signal reconstruction to mast arms
7	NW 23rd Ave	NW 55th St	Traffic signal reconstruction to mast arms
8	NE 39th Ave	NE 2nd St	Traffic signal reconstruction to mast arms

\\tip\priorities\lop1015\gvilletopriorities.xlsx

(page left blank intentionally)

**NORTH CENTRAL FLORIDA REGIONAL PLANNING COUNCIL
TRANSPORTATION PLANNING STAFF**

Scott R. Koons, AICP, Executive Director

Marlie Sanderson, AICP, Director of Transportation Planning

Lynn Franson-Godfrey, AICP, Senior Planner

* Michael Escalante, AICP, Senior Planner

Steven Dopp, Senior Planner

** Blake Harvey, Planning Intern

Suwan Shen, Planning Intern

* Primary Responsibility

** Secondary Responsibility