



List of Priority Projects

Fiscal Years 2013-14 to 2017-18

June 4, 2012

Metropolitan Transportation Planning Organization
for the Gainesville Urbanized Area

List of Priority Projects

Fiscal Years 2013-14 to 2017-18

ENDORSEMENT

This List of Priority Projects has been developed
consistent with federal and state requirements and
approved on June 4, 2012 by the
Metropolitan Transportation Planning Organization
for the Gainesville Urbanized Area
2009 NW 67th Place
Gainesville, FL 32653-1603



Mike Byerly, Chair

The preparation of this report has been financed in part through grants from the Federal Highway Administration and Federal Transit Administration, United States Department of Transportation, under The State Planning and Research Program, Section 505 [or Metropolitan Planning Program, Section 104(f)] of Title 23, United States Code. The contents of this report do not necessarily reflect the official views or policy of the United States Department of Transportation.

Approved by the

Metropolitan Transportation Planning Organization
for the Gainesville Urbanized Area

2009 NW 67th Place
Gainesville, Florida 32653
www.ncfrpc.org/mtpo
352.955.2200

With Assistance from:
North Central Florida Regional Planning Council
2009 NW 67th Place
Gainesville, FL 32653
www.ncfrpc.org

June 4, 2012

Table of Contents

Chapter I: Introduction	3
A. Purpose of this Report	3
B. Methodology Used for Setting Priorities.....	3
C. Development.....	3
D. Transportation System Modifications Selected From the Gainesville Metropolitan Area 2035 Transportation Plan - The Livable Community Reinvestment Plan	5
E. Relationship to the Management Systems	5
F. Metropolitan Transportation Planning Organization for the Gainesville Urbanized Area Urban Design Policies.....	5
G. Public Involvement and Service Equity	5
H. Freight Shippers	6
I. Public Transportation Users.....	6
J. Safety and Security in the Transportation System Planning Process	6
Chapter II: Project Priorities	11
A. Bicycle/Pedestrian Enhancement Priorities.....	11
B. Capacity/Multimodal Priorities.....	11
C. Intelligent Transportation System Priorities	11
D. Landscaping Priorities	11
E. Project, Development and Environment Study Priorities	11
F. Public Transportation Priorities	11
G. Right-of-Way Priorities	11
H. Safe Routes to School Priorities	12
I. Safety Priorities	12
J. Strategic Intermodal System Priorities	12
K. Surface Transportation Program Fund Priorities.....	12
L. Traffic Operations Priorities	12
M. Transit Corridor Development Priorities	12
N. Transportation Disadvantaged Priorities	12
O. Transportation Regional Incentive Program Priorities	13

Tables

Table 1A Bicycle/Pedestrian Priorities - Enhancement Fund Fiscal Years 2013-14 to 2017-18	15
Table 1B Bicycle/Pedestrian Priorities - Alachua County - Maintained Facilities	16
Table 1C Bicycle/Pedestrian Priorities - City of Gainesville-Maintained Facilities	17
Table 2A Capacity/Multimodal Priorities - State Highway System	19
Table 2B Capacity/Multimodal Priorities - Alachua County-Maintained Facilities	20
Table 2C Capacity/Multimodal Priorities - City of Gainesville-Maintained Facilities	21
Table 3 Intelligent Transportation System Priorities.....	23
Table 4 Landscaping Priorities - State Highway System Only*	27
Table 5A Project, Development and Environment Study Priorities State Highway System.....	31
Table 5B Project, Development and Environment Study Priorities Alachua County - Maintained Facilities	32
Table 5C Project, Development and Environment Study Priorities City of Gainesville - Maintained Facilities.....	34
Table 6 Public Transportation Priorities.....	37
Table 7A Right-of-Way Priorities - State Highway System	41
Table 7B Right-of-Way Priorities - Alachua County-Maintained Facilities.....	42
Table 7C Right-of-Way Priorities - City of Gainesville-Maintained Facilities	43
Table 8 Safe Routes to School* Priorities.....	45
Table 9 Safety Priorities.....	47
Table 10 Strategic Intermodal System Priorities	49
Table 11 Surface Transportation Program Fund Priorities.....	53
Table 12A Traffic Operations Priorities - State Highway System Only.....	55
Table 12B Traffic Operations Priorities - Local Facilities	57
Table 13 Transit Corridor Development Priorities.....	59
Table 14 Transportation Disadvantaged Priorities - Transportation Disadvantaged Trust Fund	60
Table 15 Transportation Disadvantaged Priorities - Federal Transit Administration Section 5310 - Capital Funding/Equipment Program	61
Table 16 Transportation Disadvantaged Priorities - Federal Transit Administration Section 5311 - Nonurbanized Area Formula Program.....	62
Table 17 Transportation Disadvantaged Priorities - Federal Transit Administration Section 5316 - Job Access And Reverse Commute Program	63
Table 18 Transportation Disadvantaged Priorities - Federal Transit Administration Section 5317 - New Freedom Program	64
Table 19 Transportation Regional Incentive Program Priorities.....	67
Table B-1 Roads Operating at an Unacceptable Highway Level of Service Gainesville Metropolitan Area, 2010.....	B-3
Table C-1 Year 2035 Bicycle/Pedestrian Cost Feasible Plan	C-3
Table C-2 Year 2035 Cost Feasible Plan.....	C-4

Table C-3 Year 2035 Transit Cost Feasible Plan.....	C-7
Table C-4 Year 2035 Cost Feasible Plan Intelligent Transportation System Appendix	C-8
Table C-5 Year 2035 Long Range Transportation Plan Existing Plus Committed Capacity Projects Appendix	C-11
Table D-1 Fiscal Years 2012-13 to 2016-17 Public Transportation Priorities Supplemental Information Priority 4 and 5 Projects	D-5
Table G-1 Alachua County and City of Gainesville Nonprioritized Surface Transportation Program Fund-Eligible Projects	G-3

Illustrations

Illustration I Metropolitan Transportation Planning Organization for the Gainesville Urbanized Area Calendar.....	4
Illustration II Transportation Enhancement Priorities	14
Illustration III Capacity/Multimodal Priorities State Highway System.....	18
Illustration IV Intelligent Transportation System Priorities.....	22
Illustration V Landscaping Priorities.....	26
Illustration VI Project, Development and Environment Priorities	30
Illustration VII Public Transportation Priorities	36
Illustration VIII Right-of-Way Priorities State Highway System	40
Illustration IX Safe Routes to School Priorities.....	44
Illustration X Safety Priorities.....	46
Illustration XI Strategic Intermodal System Priorities	48
Illustration XII Surface Transportation Program Fund Priorities	52
Illustration XIII Traffic Operations Priorities Local Facilities	54
Illustration XIV Transit Corridor Development Priorities	58
Illustration XV Transportation Regional Incentive Program Priorities	66
Illustration XVI Year 2035 Long Range Transportation Plan Cost Feasible Priority Ranking of Projects	C-13

Appendix

Appendix A: Transportation Plans and Programs - Eight Metropolitan Planning Factors to be Considered	A-3
Appendix B: Roads Operating at an Unacceptable Highway Level of Service	B-3
Appendix C: 2035 Long Range Transportation Plan - Livable Community Reinvestment Plan.....	C-3
Appendix D: Regional Transit System Supplemental Information.....	D-3
Appendix E: Safety Projects Supplemental Material	E-3
Appendix F: Federal Funds Obligation Project List, Fiscal Year 2010-11	F-3
Appendix G: Supplemental Surface Transportation Program Fund-Eligible Projects.....	G-3

THIS PAGE LEFT BLANK INTENTIONALLY

Introduction

THIS PAGE LEFT BLANK INTENTIONALLY

Chapter I: Introduction

Each spring, the Metropolitan Transportation Planning Organization for the Gainesville Urbanized Area approves a five-year program for transportation system modification projects to be funded with federal, state and local funds. This five-year program is referred to as the Transportation Improvement Program.

The Transportation Improvement Program has the following three phases.

- Spring - The Metropolitan Transportation Organization for the Gainesville Urbanized Area approves priority lists for projects it wants Florida Department of Transportation to fund;
- Late Fall - The Florida Department of Transportation reports to the Metropolitan Transportation Planning Organization for the Gainesville Urbanized Area what projects it proposes to fund; and
- Spring - The Metropolitan Transportation Planning Organization for the Gainesville Urbanized Area decides which federally-funded projects to approve.

A. Purpose of this Report

This report develops a list of needed, but unfunded, transportation projects. The projects listed later in this report are determined by the Metropolitan Transportation Planning Organization for the Gainesville Urbanized Area to be necessary to effectively implement the adopted 2035 Long Range Transportation Plan, the *Livable Community Reinvestment Plan*. Projects selected for funding will be incorporated into the Metropolitan Transportation Planning Organization for the Gainesville Urbanized Area Fiscal Years 2013-14 to 2017-18 Transportation Improvement Program.

B. Methodology Used for Setting Priorities

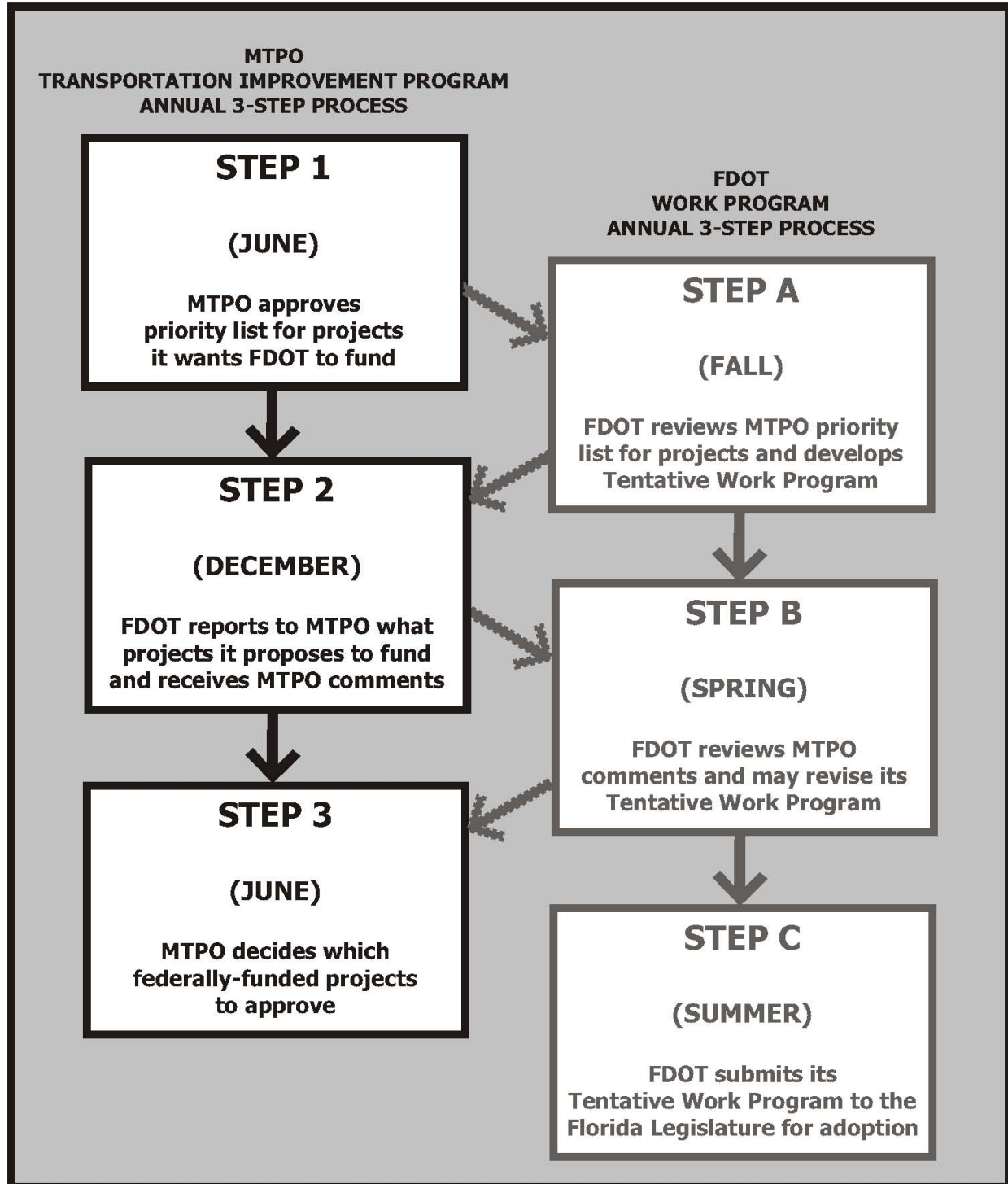
The following methodology has been used to establish the priorities contained in this report.

- March - Draft report distributed to the Metropolitan Transportation Planning Organization for the Gainesville Urbanized Area advisory committees that identifies transportation priorities submitted last year and, of those, which ones were funded;
- May - The Metropolitan Transportation Planning Organization for the Gainesville Urbanized Area advisory committees develop recommended transportation priorities for the coming year; and
- June - The Metropolitan Transportation Planning Organization for the Gainesville Urbanized Area approves transportation priorities for the coming year and submits a List of Priority Projects to the Florida Department of Transportation.

C. Development

Section 134(f) of Title 23, United States Code states that, in developing transportation programs, metropolitan planning organizations shall consider the eight factors contained in Appendix A. These factors have been considered in the development of the project priorities contained in this report.

Illustration I
Metropolitan Transportation Planning Organization
for the Gainesville Urbanized Area
Calendar



FDOT= Florida Department of Transportation
MTPO= Metropolitan Transportation Planning Organization for the Gainesville Urbanized Area

t:\mike\tp\priorities\top1217\calendar.cdr

D. Transportation System Modifications Selected From the Gainesville Metropolitan Area 2035 Transportation Plan - The Livable Community Reinvestment Plan

The transportation system modifications that have been identified as priorities from the adopted 2035 Long Range Transportation Plan, the *Livable Community Reinvestment Plan* are listed in the Public Transportation Priorities, Surface Transportation Program Fund Priorities and Traffic Operations Priorities project tables.

E. Relationship to the Management Systems

The transportation priorities contained in this report are developed from available information from the management systems required for the Gainesville Metropolitan Area as in accordance with the Safe, Accountable, Flexible, Efficient Transportation Equity Act: A Legacy for Users. The congestion management system for the Gainesville Metropolitan Area was fully operational by October 1, 1997.

F. Metropolitan Transportation Planning Organization for the Gainesville Urbanized Area Urban Design Policies

The Metropolitan Transportation Planning Organization for the Gainesville Urbanized Area has, over the years, adopted various urban design and streetscape policies. These policies have been consolidated into a document entitled Metropolitan Transportation Planning Organization for the Gainesville Urbanized Area Urban Design Policy Manual. Therefore, unless otherwise stated within this List of Priority Projects document, all priority project recommendations shall be in conformance with the Metropolitan Transportation Planning Organization for the Gainesville Urbanized Area Urban Design Policy Manual document.

G. Public Involvement and Service Equity

Citizen involvement in the Transportation Improvement Program three-step process is promoted through the Metropolitan Transportation Planning Organization for the Gainesville Urbanized Area Public Involvement Process which was developed and adopted pursuant to 23 Code of Federal Regulations 450.316(b)(1) requirements. The Metropolitan Transportation Planning Organization for the Gainesville Urbanized Area Public Involvement Plan describes a process to involve the public, including private transportation operators, in the transportation planning process, including the annual development of the Transportation Improvement Program, in accordance with Section 339.175(7), Florida Statutes. In addition, the Metropolitan Transportation Planning Organization for the Gainesville Urbanized Area Public Involvement Plan includes strategies to address service equity, including outreach to socio-economic communities that have traditionally been underrepresented in the transportation planning process. The Metropolitan Transportation Planning Organization for the Gainesville Urbanized Area sponsors workshops and charrettes, as necessary, regarding projects in the Transportation Improvement Program.

The Metropolitan Transportation Planning Organization for the Gainesville Urbanized Area provides local news media notification of meetings when the List of Priority Projects is scheduled for review and approval by the Metropolitan Transportation Planning Organization for the Gainesville Urbanized Area and its advisory committees, thereby providing citizens an opportunity to participate in the development of the List of Priority Projects. To inform the general public and other interested persons who may want to review and comment on the List of Priority Projects, public notice is also provided through the Clerk of the City of Gainesville, who places meeting notices on City Community Calendar and in the local newspaper listing of public meetings of the week.

H. Freight Shippers

The Metropolitan Transportation Planning Organization for the Gainesville Urbanized Area maintains a database of freight shippers that serve and/or are based in the Gainesville Metropolitan Area. Correspondence is sent to the freight shippers inviting them to participate in the development of the Transportation Improvement Program. Freight shippers are notified of the Metropolitan Transportation Planning Organization for the Gainesville Urbanized Area meeting dates when the List of Priority Projects and the Transportation Improvement Program documents are considered by the Metropolitan Transportation Planning Organization for the Gainesville Urbanized Area.

I. Public Transportation Users

The Metropolitan Transportation Planning Organization for the Gainesville Urbanized Area coordinates with Regional Transit System staff for public involvement in the development of the Transportation Improvement Program. The Regional Transit System Advisory Board provides input for transit projects to be included in the List of Priority Projects. In addition, Regional Transit System staff conducts transit forums to gather public input. The Alachua County Transportation Disadvantaged Coordinating Board, which includes public transportation users, provides input for transportation disadvantaged projects to be included in the List of Priority Projects. Each year, the Metropolitan Transportation Planning Organization for the Gainesville Urbanized Area solicits input from the Regional Transit System and the Alachua County Transportation Disadvantaged Coordinating Board for projects to be included in the List of Priority Projects.

J. Safety and Security in the Transportation System Planning Process

The Florida Department of Transportation supports a network of Community Traffic Safety Teams. These Teams are comprised of state and local technical expertise for transportation system management and planning, public safety, including police and fire personnel, and education. In addition to a Metropolitan Transportation Planning Organization for the Gainesville Urbanized Area representative, the Alachua County Traffic Safety Team is comprised of representatives from:

State of Florida	Alachua County	City of Gainesville
Florida Department of Transportation	Fire Rescue	Fire Rescue
Florida Highway Patrol	School Board	Police Department
University of Florida T ² Center	Sheriff's Office	Public Works Department
UF Facilities Planning & Construction	Public Works Department	-

UF = University of Florida

T² = Technology Transfer

The Metropolitan Transportation Planning Organization for the Gainesville Urbanized Area receives Alachua County Traffic Safety Team recommendations for safety-funded projects in the List of Priority Projects. Currently, the focus of transportation system security is on airport facilities.

THIS PAGE LEFT BLANK INTENTIONALLY

Project Priorities

THIS PAGE LEFT BLANK INTENTIONALLY

Chapter II: Project Priorities

A. Bicycle/Pedestrian Enhancement Priorities

Table 1A identifies enhancement-funded bicycle/pedestrian project priorities for the Fiscal Years 2013-14 to 2017-18 Transportation Improvement Program. Table 1B identifies Alachua County-maintained facility bicycle/pedestrian project priorities. Table 1C identifies City of Gainesville-maintained facility bicycle/pedestrian project priorities.

B. Capacity/Multimodal Priorities

Table 2A identifies State Highway System capacity/multimodal project priorities for the Fiscal Years 2013-14 to 2017-18 Transportation Improvement Program. Table 2B identifies Alachua County-maintained facility capacity/multimodal project priorities. Table 2C identifies City of Gainesville-maintained capacity/multimodal project priorities.

C. Intelligent Transportation System Priorities

Table 3 identifies intelligent transportation system project priorities for the Fiscal Years 2013-14 to 2017-18 Transportation Improvement Program.

D. Landscaping Priorities

Table 4 identifies landscaping project priorities for the Fiscal Years 2013-14 to 2017-18 Transportation Improvement Program.

E. Project, Development and Environment Study Priorities

Table 5A identifies State Highway System Project Design and Environment study project priorities for the Fiscal Years 2013-14 to 2017-18 Transportation Improvement Program. Table 5B identifies Alachua County-maintained facility Project Design and Environment study project priorities. Table 5C identifies City of Gainesville-maintained facility Project Design and Environment study project priorities.

F. Public Transportation Priorities

Table 6 identifies public transportation project priorities. This category includes: commuter assistance projects; intermodal facility projects; park-and-ride facility projects; railroad right-of-way projects; and transit system projects for the Fiscal Years 2013-14 to 2017-18.

G. Right-of-Way Priorities

Table 7A identifies State Highway System Right-of-way project priorities for the Fiscal Years 2013-14 to 2017-18 Transportation Improvement Program. Table 7B identifies Alachua County-maintained facility Right-of-way project priorities. Table 7C identifies City of Gainesville-maintained facility Right-of-way project priorities.

H. Safe Routes to School Priorities

Table 8 identifies transportation safe routes to school project priorities developed by the School Board of Alachua County staff, Bicycle/Pedestrian Advisory Board and Alachua County Traffic Safety Team for the Fiscal Years 2013-14 to 2017-18 Transportation Improvement Program.

I. Safety Priorities

Table 9 identifies transportation safety project priorities developed by the Metropolitan Transportation Planning Organization for the Gainesville Urbanized Area Technical Advisory Committee and Alachua County Traffic Safety Team for the Fiscal Years 2013-14 to 2017-18 Transportation Improvement Program.

J. Strategic Intermodal System Priorities

Table 10 identifies Strategic Intermodal System project priorities for the Fiscal Years 2013-14 to 2017-18 Transportation Improvement Program.

K. Surface Transportation Program Fund Priorities

Table 11 identifies Surface Transportation Program-eligible capacity modification priorities. This category includes: bicycle facility projects; Non-State resurfacing projects; pedestrian facility (including school safety concern) projects; road construction and reconstruction projects; streetlighting; and additional public transportation, traffic operations and transportation disadvantaged projects for the Fiscal Years 2013-14 to 2017-18 Transportation Improvement Program.

L. Traffic Operations Priorities

Table 12A identifies State Highway System traffic operations project priorities. Table 12B identifies local facility traffic operations project priorities. This category includes: congestion management system projects; intelligent transportation system projects; and intersection modification projects for the Fiscal Years 2013-14 to 2017-18 Transportation Improvement Program.

M. Transit Corridor Development Priorities

Table 13 identifies transit corridor development project priorities for the Fiscal Years 2013-14 to 2017-18 Transportation Improvement Program.

N. Transportation Disadvantaged Priorities

Table 14, Table 15, Table 16, Table 17 and Table 18 identify transportation disadvantaged project priorities for the Fiscal Years 2013-14 to 2017-18 Transportation Improvement Program.

O. Transportation Regional Incentive Program Priorities

Table 19 identifies Transportation Regional Incentive Program project priorities for the Fiscal Years 2013-14 to 2017-18 Transportation Improvement Program.

Illustration II Transportation Enhancement Priorities Fiscal Years 2013-14 to 2017-18



Table 1A
Bicycle/Pedestrian Priorities - Enhancement Fund
Fiscal Years 2013-14 to 2017-18
(within the Gainesville Metropolitan Area)

Number	Project	Location	Description
1 <i>Partially Funded</i>	<i>UF Cross Campus Trail [part of Archer Braid*]</i>	<i>FM: Gale Lemerand Drive TO: Archer Road [SR 24]</i>	<i>Construct bicycle/pedestrian trail</i>
2	Hull Road Parking Area [part of the Archer Braid*]	FM: End of Hull Road Parking Area TO: SW 34 Street [SR 121]	Construct bicycle/pedestrian trail
3	Hull Road Connector [part of the Bivens Braid*]	FM: SW 20 Avenue TO: End of Hull Road Parking Area	Construct bicycle/pedestrian trail
4	Lake Kanapaha Trail	FM: Tower Road TO: Interstate 75	Construct bicycle/pedestrian trail
5	SW 34 Street Grade-Separated Crossing [part of the Archer Braid*]	AT: SW 34 Street [SR 121]	Construct bicycle/pedestrian grade-separated crossing
6	SW 43 Street	FM: SW 40 Boulevard TO: SW 20 Avenue	Construct ADA-compliant sidewalk
7	NW 3 Street	FM: W University Avenue TO: NW 8 Avenue	Construct ADA-compliant sidewalk
8	E University Avenue [SR 26]	FM: E 9 Street TO: Waldo Road [SR 24]	Pedestrian refuge islands
9	Bus Stop Upgrades	AT: RTS Systemwide	Construct bus stops and sidewalk connections

Note: Projects in italic text are partially funded, as shown in the Transportation Improvement Program.

*2004 Alachua Countywide Bicycle Master Plan Addendum

ADA = Americans with Disabilities Act of 1990
FM = From
RTS = Regional Transit System
UF = University of Florida

E = East
NW = Northwest
SW = Southwest
W = West

Initial Enhancement Priorities were developed by the Bicycle/Pedestrian Advisory Board.

Table 1B
Bicycle/Pedestrian Priorities - Alachua County - Maintained Facilities
Fiscal Years 2013-14 to 2017-18
(within the Gainesville Metropolitan Area)

Number	Project	Location	Description
NA FDOTTWP	<i>SW 8 Avenue Multi-Use Offroad Facility</i>	<i>FM: Parker Road TO: SW 91 Street</i>	<i>Construct Multi-Use Offroad Facility</i>
NA	NW 98 Street Multi-Use Offroad Facility	FM: NW 23 Avenue TO: NW 39 Avenue [SR 222]	Construct bicycle/pedestrian trail

Note: Projects in italic text are partially funded, as shown in the Transportation Improvement Program.)

FM = From
RTS = Regional Transit System
SW = Southwest
ADA = Americans with Disabilities Act of 1990
FDOTTWP = Florida Department of Transportation Tentative Work Program-funded project

NA = Not Applicable
SR = State Road
UF = University of Florida

Bicycle/Pedestrian Priorities- Alachua County-Maintained Facilities are derived from the adopted 2035 Long Range Transportation Plan, the *Livable Community Reinvestment Plan*. These projects were included in the 2035 Long Range Transportation Plan, the *Livable Community Reinvestment Plan* at the request of Alachua County.

Table 1C
Bicycle/Pedestrian Priorities - City of Gainesville-Maintained Facilities
Fiscal Years 2013-14 to 2017-18
(within the Gainesville Metropolitan Area)

Number	Project	Location	Description
NA Partially Funded	<i>SW 35 Place Sidewalk</i>	<i>FM: SW 34 Street [SR 121] TO: SW 23 Terrace</i>	<i>Construct ADA-compliant concrete sidewalk</i>
NA	West 6 Street Rail/Trail	FM: NW 16 Avenue TO: NW 23 Avenue	Construct Rail/Trail

Note: Projects in italic text are partially funded, as shown in the Transportation Improvement Program.

ADA = Americans with Disabilities Act of 1990
NA = Not Applicable
SW = Southwest

FM = From
SR = State Road

Bicycle/Pedestrian Priorities- City of Gainesville-Maintained Facilities are derived from the adopted 2035 Livable Community Reinvestment Plan, the *Livable Community Reinvestment Plan*. These projects were included in the 2035 Long Range Transportation Plan, the *Livable Community Reinvestment Plan* at the request of the City of Gainesville.

Illustration III
Capacity/Multimodal Priorities State Highway System
Fiscal Years 2013-14 to 2017-18



Table 2A
Capacity/Multimodal Priorities - State Highway System
Fiscal Years 2013-14 to 2017-18
(within the Gainesville Metropolitan Area)

Number	Project	Location	Description
1 <i>Partially Funded</i>	<i>SE 16 Avenue [SR 226]</i>	<i>FM: Main Street [SR 329] TO: Williston Road [SR 331]</i>	<i>Reconstruct MTPO-approved TSM Alternative</i>
2 <i>Partially Funded</i>	<i>NW 34 Street [SR 121]</i>	<i>FM: NW 16 Avenue TO: US 441</i>	<i>Construction of center turnlanes along this facility</i>
3	University Avenue [SR 26]	FM: Gale Lemerand Drive TO: Waldo Road [SR 24]	Conduct Multimodal Emphasis Corridor Study
4	W 13 Street [US 441]	FM: Archer Road [SR 24] TO: NW 33 Avenue	Conduct Multimodal Emphasis Corridor Study
5	Waldo Road Multiway Boulevard	FM: E University Avenue [SR 26] TO: NE 39 Avenue [SR 222]	Redesign to support bus rapid transit, multi-use trail and corridor redevelopment study (PD&E)
6	Bus Rapid Transit (BRT) Corridor Infrastructure-partial	FM: Santa Fe Village TO: Gainesville Regional Airport	Installation of BRT infrastructure
7	Archer Road [SR 24] BRT	FM: MTPO Boundary TO: SW 45 Street	Dedicated lane(s) design, additional roadway capacity and corridor management study (PD&E)
8	Williston Road [SR 121]	FM: SW 62 Avenue TO: SW 35 Way	Additional roadway capacity and corridor management study (PD&E)

Note: Projects in italic text are partially funded, as shown in the Transportation Improvement Program.

BRT = Bus Rapid Transit

NW = Northwest

SE = Southeast

TSM = Transportation System Management

MTPO = Metropolitan Transportation Planning Organization for the Gainesville Urbanized Area

FM = From

PD&E = Project Design and Environment

SW = Southwest

Initial Capacity/Multimodal Priorities were developed by Metropolitan Transportation Planning Organization for the Gainesville Urbanized Area, based on the 2035 Long Range Transportation Plan, the *Livable Community Reinvestment Plan*, Cost Feasible Plan projects.

Table 2B
Capacity/Multimodal Priorities - Alachua County-Maintained Facilities
Fiscal Years 2013-14 to 2017-18
(within the Gainesville Metropolitan Area)

Number	Project	Location	Description
1	SW 20 Avenue	FM: SW 61 Street TO: SW 52 Street	4-laning and multi-use path
2	SW 8 Avenue - Phase 2	FM: SW 143 Street TO: SW 122 Street	2-lane roadway and multi-use path
3	NW 23 Avenue	FM: NW 59 Terrace TO: NW 51 Street	4-laning and resurfacing
4	NW 23 Avenue	FM: Ft. Clarke Boulevard TO: NW 83 Street	4-laning
5	SE 43 Street	FM: Hawthorne Road [SR 20] TO: University Avenue [SR 26]	Construction of two-way left turnlanes, multi-use path and signalization
6	SW 45 Street / SW 47 Street	FM: Archer Road [SR 24] TO: SW 30 Avenue	New roadway with travel lanes, BRT dedicated transit lanes and multi-use path
7	SW 30 Avenue	FM: SW 47 Street TO: SW 43 Street	New Interstate 75 overpass with travel lanes, BRT dedicated transit lanes and the Archer Braid Trail
8	NW 83 Street	FM: NW 39 Avenue [SR 222] TO: NW 46 Avenue	New roadway with travel lanes, BRT dedicated transit lanes and the Millhopper Greenway
9	NW 83 Street	FM: NW 23 Avenue TO: NW 39 Avenue [SR 222]	BRT dedicated transit lanes
10	Ft. Clarke Boulevard / NW 83 Street Corridor	FM: Newberry Road [SR 26] TO: NW 23 Avenue	BRT dedicated transit lanes & new multimodal-only Interstate 75 overpass
11	NW 46 Avenue	FM: NW 98 Street TO: NW 83 Street	New roadway with travel lanes, BRT dedicated transit lanes & new multi-use path and new Interstate 75 overpass

Note: Projects in italic text are partially funded, as shown in the Transportation Improvement Program.

BRT = Bus Rapid Transit

SE = Southeast

FM = From

SW = Southwest

Ft = Fort

MTPO = Metropolitan Transportation Planning Organization for the Gainesville Urbanized Area

NW = Northwest

Initial Capacity/Multimodal Priorities - Alachua County-Maintained Facilities were developed by Metropolitan Transportation Planning Organization for the Gainesville Urbanized Area, based on the 2035 Long Range Transportation Plan Cost Feasible Plan, the *Livable Community Reinvestment Plan* projects. These projects were included in the 2035 Long Range Transportation Plan Cost Feasible Plan, the *Livable Community Reinvestment Plan* at the request of Alachua County.

Table 2C
Capacity/Multimodal Priorities - City of Gainesville-Maintained Facilities
Fiscal Years 2013-14 to 2017-18
(within the Gainesville Metropolitan Area)

Number	Project	Location	Description
NA	SE 4 Street- Phase 2	FM: Williston Road [SR 331] TO: Depot Avenue	Reconstruction
NA	SW 62 Boulevard	FM: Archer Road [SR 24] TO: Newberry Road [SR 24]	Four lanes plus two additional BRT lanes in the middle
NA	Hull Road Extension	FM: SW 43 Street TO: SW 34 Street	Construct Hull Road extension with approved 150-foot right-of-way cross-section
NA	SW 6 Street	FM: SW 16 Avenue [SR 226] TO: W University Avenue [SR 26]	Urban cross-section with bikelanes reconstruction from SW 4 Avenue to West University Avenue and add medians, bikelanes and onstreet parking from SW 16 Avenue to SW 4 Avenue
NA	SW 40 Boulevard	FM: SW 34 Street [SR 121] TO: Archer Road [SR 24]	Construct 2-lane extension
NA	SW 47 Avenue	FM: SW 34 Street [SR 121] TO: Williston Road [SR 331]	Construct 2-lane extension

Note: Projects in italic text are partially funded, as shown in the Transportation Improvement Program.

BRT = Bus Rapid Transit
NA = Not Applicable
SR = State Road
W = West

FM = From
SE = Southeast
SW = Southwest

Initial Capacity/Multimodal Priorities- City of Gainesville-Maintained Facilities were developed by Metropolitan Transportation Planning Organization for the Gainesville Urbanized Area, based on the 2035 Long Range Transportation Plan, the *Livable Community Reinvestment Plan*, Cost Feasible Plan projects. These projects were included in the 2035 Long Range Transportation Plan, the *Livable Community Reinvestment Plan* at the request of the City of Gainesville.

Illustration IV Intelligent Transportation System Priorities Fiscal Years 2013-14 to 2017-18



Table 3
Intelligent Transportation System Priorities
Fiscal Years 2013-14 to 2017-18
(Gainesville Metropolitan Area/Countywide)

Number	Project	Location	Description
1	Traffic Management System- Phase V- Interstate 75	FM: Marion County line TO: Columbia County line	<p>A. Add Dynamic Message Signs to alert motorists of traffic conditions and travel times.</p> <p>B. Add pan-tilt-zoom traffic surveillance cameras for active traffic management of the freeway. This allows operators at the Gainesville Traffic Management Center to alert motorists of existing conditions using Dynamic Message Signs and the 511 information hotline.</p> <p>C. Add traffic detection technology so automated alerts can be sent to the Gainesville Traffic Management Center operators when highway speeds drop below a certain threshold as well as for highway traffic studies and travel time collection.</p>
	Regional Transit System - Bus Priority System-	-	
2	A. Route 9- Archer Road [SR 24]	FM: SW 23 Terrace TO: SW 23 Drive	
	Route 9- Williston Road [SR 331]	FM: SW 25 Terrace TO: SW 23 Terrace	
	B. Route 20 - SW 34 Street [SR 121]	FM: SW 20 Avenue TO: Hull Road	
	C. Route 21 - SW 34 Street [SR 121]	FM: SW 20 Avenue TO: Hull Road	
	D. Route 35- Archer Road [SR 24]	FM: Center Drive TO: Lemerand Drive	
		FM: SW 23 Terrace TO: SW 16 Avenue [SR 226]	
	Route 35- SW 16 Avenue [SR 226]	FM: Archer Road [SR 24] TO: Shealy Drive	
	Route 35- SW 34 Street [SR 121]	FM: SW 35 Place TO: Williston Road [SR 331]	
	Route 35- Williston Road [SR 331]	FM: SW 34 Street [SR 121] TO: SW 23 Terrace	
			Adding signal priority to heavily used bus routes for University of Florida students will make those routes more reliable, thus resulting in higher passenger capacity and fewer vehicles on the road.

Table 3 (Continued)
Intelligent Transportation System Priorities
Fiscal Years 2013-14 to 2017-18
(Gainesville Metropolitan Area/Countywide)

Number	Project	Location	Description
3	Dynamic Message Signs on State Highway Arterials	-	Dynamic message on arterials will alert drivers of existing traffic conditions, alternate routes, detour routes in the event Interstate 75 is shut down, and travel times.
4	Expand Automated Arterial Travel Time System-		Expanding the Arterial Travel Time System will provide motorists with more real time information via Google map or Dynamic Message Signs for actual travel times to various spots in the urban area.
	A. W 13 Street [US 441]	FM: Williston Road [SR 331] TO: NW 39 Avenue [SR 222]	Motorists may be able to make a different route choice based on information they receive. The travel times can also be used for traffic studies to measure development-related impacts
	B. SW 34 Street [SR 121]	FM: Interstate 75 TO: NW 16 Avenue	
5	Travel Demand Management	AT: Gainesville Metropolitan Areawide	Information technologies project that addresses travel demand strategies, such as HOV lanes and other travel demand technologies.

HOV = High Occupancy Vehicles
SE = Southeast
SW = Southwest
W = West

FM = From
NW = Northwest
SR = State Road
TMC = Traffic Management Center

Initial intelligent transportation system priorities were developed by City of Gainesville Traffic Operations staff.

THIS PAGE LEFT BLANK INTENTIONALLY

Illustration V
Landscaping Priorities
Fiscal Years 2013-14 to 2017-18

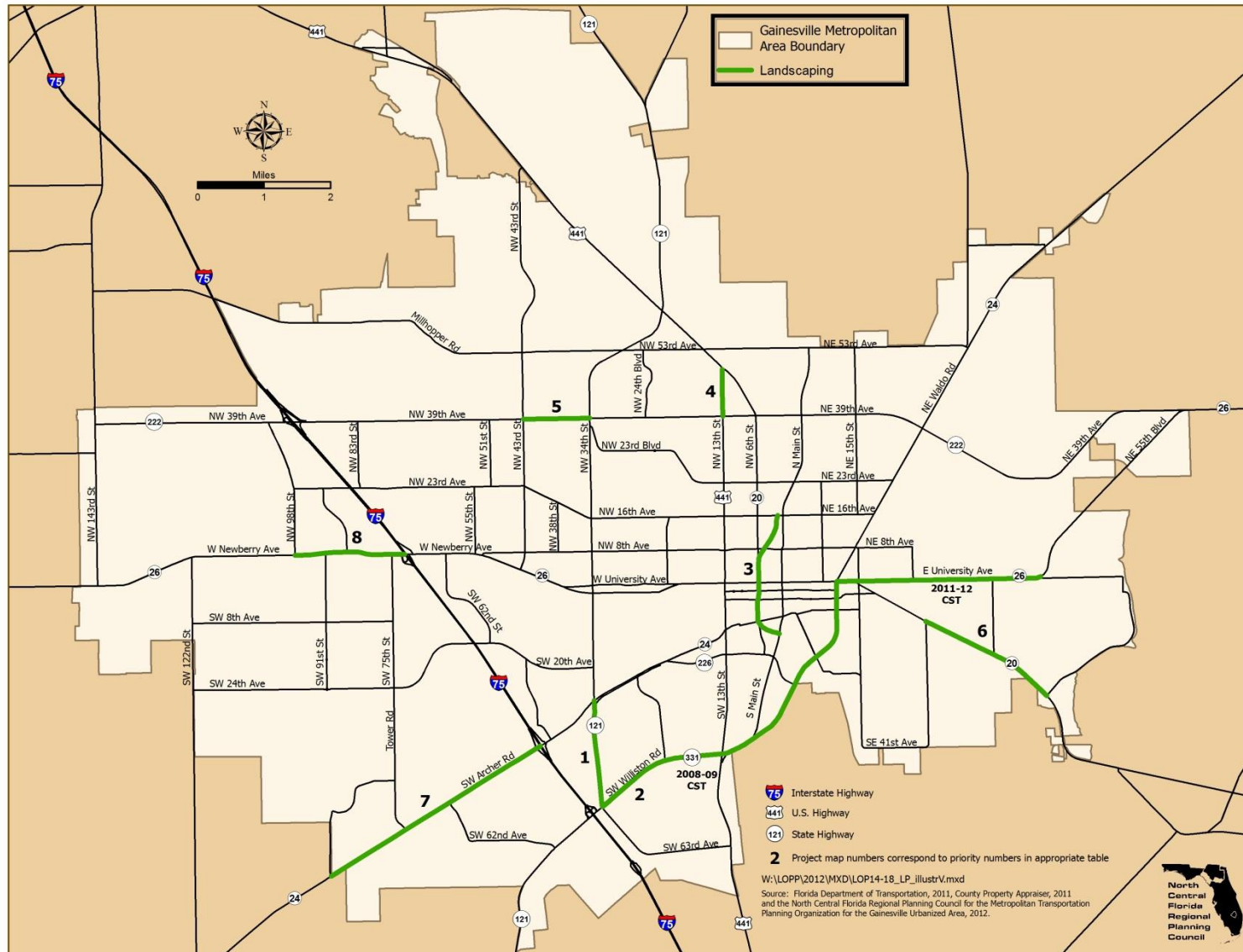


Table 4
Landscaping Priorities - State Highway System Only*
Fiscal Years 2013-14 to 2017-18
(within the Gainesville Metropolitan Area)

Number	Project	Location	Description
1	SW 34 Street [SR 121]	FM: Williston Road [SR 331] TO: Archer Road [SR 24]	provide shade tree landscaping for pedestrian facilities where possible and landscaping to grassed medians where it is not possible
2	Williston Road [SR 331]	FM: SW 34 Street [SR 121] TO: SW 23 Terrace	provide shade tree landscaping for pedestrian facilities where possible and landscaping to grassed medians where it is not possible
3	West 6 Street Rail/Trail	FM: Depot Avenue TO: NW 16 Avenue	provide shade tree landscaping for pedestrian facilities where possible and landscaping to grassed medians where it is not possible
4	NW 13 Street [US 441]	FM: NW 39 Avenue [SR 222] TO: NW 6 Street [SR 20]	provide shade tree landscaping for pedestrian facilities where possible and landscaping to grassed medians where it is not possible
5	NW 39 Avenue [SR 222]	FM: NW 43 Street TO: NW 34 Street [SR 121]	provide shade tree landscaping for pedestrian facilities where possible and landscaping to grassed medians where it is not possible
6	Hawthorne Road [SR 20]	FM: SE 27 Street TO: SE 55 Boulevard	provide shade tree landscaping for pedestrian facilities where possible and landscaping to grassed medians where it is not possible
7	Archer Road [SR 24]	FM: SW 91 Street TO: Interstate 75	provide shade tree landscaping for pedestrian facilities where possible and landscaping to grassed medians where it is not possible

Table 4 (Continued)
Landscaping Priorities - State Highway System Only*
Fiscal Years 2013-14 to 2017-18
(within the Gainesville Metropolitan Area)

Number	Project	Location	Description
8	Newberry Road [SR 26]	FM: NW 98 Street TO: Interstate 75	provide shade tree landscaping for pedestrian facilities where possible and landscaping to grassed medians where it is not possible

Note: Projects in italic text are partially funded, as shown in the Transportation Improvement Program.

* Projects must be constructible within the available State Road right-of-way.

FM = From
SE = Southeast
SR = State Road

NW = Northwest
SW = Southwest

Initial Landscaping Priorities were developed by Alachua County and City of Gainesville Public Works Department staff.

THIS PAGE LEFT BLANK INTENTIONALLY

Illustration VI
Project, Development and Environment (PD&E) Priorities
Fiscal Years 2013-14 to 2017-18



Table 5A
Project, Development and Environment Study Priorities
State Highway System
Fiscal Years 2013-14 to 2017-18
(within the Gainesville Metropolitan Area)

Number	Project	Location	Description
1	NW 34 Street [SR 121]	FM: NW 16 Avenue TO: US 441	conduct PD&E study in order to add turnlanes in various locations
2	Oaks Mall to Airport BRT	FM: Oaks Mall TO: Airport (via Archer Road and Downtown)	Conduct PD&E study
3	Santa Fe to Oaks Mall BRT	FM: Santa Fe College TO: Oaks Mall	Conduct PD&E study
4	University Avenue [SR 26]	FM: Gale Lemerand Drive TO: Waldo Road [SR 24]	Conduct Multimodal Emphasis Corridor Study
5	W 13 Street [US 441]	FM: Archer Road [SR 24] TO: NW 33 Avenue	Conduct Multimodal Emphasis Corridor Study
6	Waldo Road Multiway Boulevard	FM: E University Avenue [SR 26] TO: NE 39 Avenue [SR 222]	Redesign to support bus rapid transit, multi-use trail and corridor redevelopment study (PD&E)
7	Archer Road [SR 24] BRT	FM: MTPO Boundary TO: SW 45 Street	Dedicated lane(s) design, additional roadway capacity and corridor management study (PD&E)
8	Williston Road [SR 121]	FM: SW 62 Avenue TO: SW 35 Way	Additional roadway capacity and corridor management study (PD&E)

Note: Projects in italic text are partially funded, as shown in the Transportation Improvement Program.

BRT = Bus Rapid Transit

FM = From

NW = Northwest

US = United States

MTPO = Metropolitan Transportation Planning Organization for the Gainesville Urbanized Area

PD&E = Project Design and Environment Study

E = East

NE = Northeast

SR = State Road

Initial Project Design and Environment Study Priorities were developed by Metropolitan Transportation Planning Organization for the Gainesville Urbanized Area, based on the 2035 Long Range Transportation Plan, the *Livable Community Reinvestment Plan*, Cost Feasible Plan projects.

Table 5B
Project, Development and Environment Study Priorities
Alachua County - Maintained Facilities
Fiscal Years 2013-14 to 2017-18
(within the Gainesville Metropolitan Area)

Number	Project	Location	Description
1	SW 20 Avenue Reconstruction	FM: SW 61 Street TO: SW 52 Street	Conduct PD&E study in order to construct a 4-lane divided facility and multi-use path
2	SW 8 Avenue- Phase 2	FM: SW 143 Street TO: SW 122 Street	Conduct PD&E study for 2-lane roadway and multi-use path
3	NW 23 Avenue	FM: NW 59 Terrace TO: NW 51 Street	Conduct PD&E study for 4-laning and resurfacing
4	NW 23 Avenue	FM: Ft. Clarke Boulevard TO: NW 83 Street	Conduct PD&E study for 4-laning
5	SE 43 Street	FM: Hawthorne Road [SR 20] TO: University Avenue [SR 26]	Conduct PD&E study for construction of two-way left turnlanes, multi-use path and signalization
6	SW 45 Street / SW 47 Street	FM: Archer Road [SR 24] TO: SW 30 Avenue	Conduct PD&E study for new roadway with travel lanes, BRT dedicated transit lanes and multi-use path
7	SW 30 Avenue	FM: SW 47 Street TO: SW 43 Street	Conduct PD&E study for new Interstate 75 overpass with travel lanes, BRT dedicated transit lanes and the Archer Braid Trail
8	NW 83 Street	FM: NW 39 Avenue [SR 222] TO: NW 46 Avenue	Conduct PD&E study for new roadway with travel lanes, BRT dedicated transit lanes and the Millhopper Greenway
9	NW 83 Street	FM: NW 23 Avenue TO: NW 39 Avenue [SR 222]	Conduct PD&E study for BRT dedicated transit lanes
10	Ft. Clarke Boulevard / NW 83 Street Corridor	FM: Newberry Road [SR 26] TO: NW 23 Avenue	Conduct PD&E study for BRT dedicated transit lanes & new multimodal-only Interstate 75 overpass

Table 5B (Continued)
Project, Development and Environment Study Priorities
Alachua County - Maintained Facilities
Fiscal Years 2013-14 to 2017-18
(within the Gainesville Metropolitan Area)

Number	Project	Location	Description
11	NW 46 Avenue	FM: NW 98 Street TO: NW 83 Street	Conduct PD&E study for new roadway with travel lanes, BRT dedicated transit lanes & new multi-use path and new Interstate 75 overpass

Note: Projects in italic text are partially funded, as shown in the Transportation Improvement Program.

BRT = Bus Rapid Transit
Ft. = Fort
NW = Northwest
SE = Southeast

FM = From
PD&E = Project Design and Environment Study
SR = State Road
SW = Southwest

Initial Project Design and Environment Study Priorities- Alachua County-Maintained Facilities were developed by Metropolitan Transportation Planning Organization for the Gainesville Urbanized Area, based on the 2035 Long Range Transportation Plan, the *Livable Community Reinvestment Plan*, Cost Feasible Plan projects. These projects were included in the 2035 Long Range Transportation Plan, the *Livable Community Reinvestment Plan* at the request of Alachua County.

Table 5C
Project, Development and Environment Study Priorities
City of Gainesville - Maintained Facilities
Fiscal Years 2013-14 to 2017-18
(within the Gainesville Metropolitan Area)

Number	Project	Location	Description
NA	SE 4 Street- Phase 2	FM: Williston Road [SR 331] TO: Depot Avenue	Conduct PD&E study for reconstruction
NA	SW 62 Boulevard	FM: Archer Road [SR 24] TO: Newberry Road [SR 24]	Conduct PD&E study for four lanes plus two additional BRT lanes in the middle
NA	Hull Road Extension	FM: SW 20 Avenue TO: SW 34 Street [SR 121]	Conduct PD&E study for MTPO-approved 150-foot cross-section

Note: Projects in italic text are partially funded, as shown in the Transportation Improvement Program.

BRT = Bus Rapid Transit

FM = From

NA = Not Applicable

SR = State Road

SE = Southeast

SW = Southwest

MTPO = Metropolitan Transportation Planning Organization for the Gainesville Urbanized Area

PD&E = Project Design and Environment Study

Initial Project Design and Environment Study Priorities- City of Gainesville-Maintained Facilities were developed by Metropolitan Transportation Planning Organization for the Gainesville Urbanized Area, based on the 2035 Long Range Transportation Plan, the *Livable Community Reinvestment Plan*, Cost Feasible Plan projects. These projects were included in the 2035 Long Range Transportation Plan, the *Livable Community Reinvestment Plan* at the request of the City of Gainesville.

THIS PAGE LEFT BLANK INTENTIONALLY

Illustration VII
Public Transportation Priorities
Fiscal Years 2013-14 to 2017-18

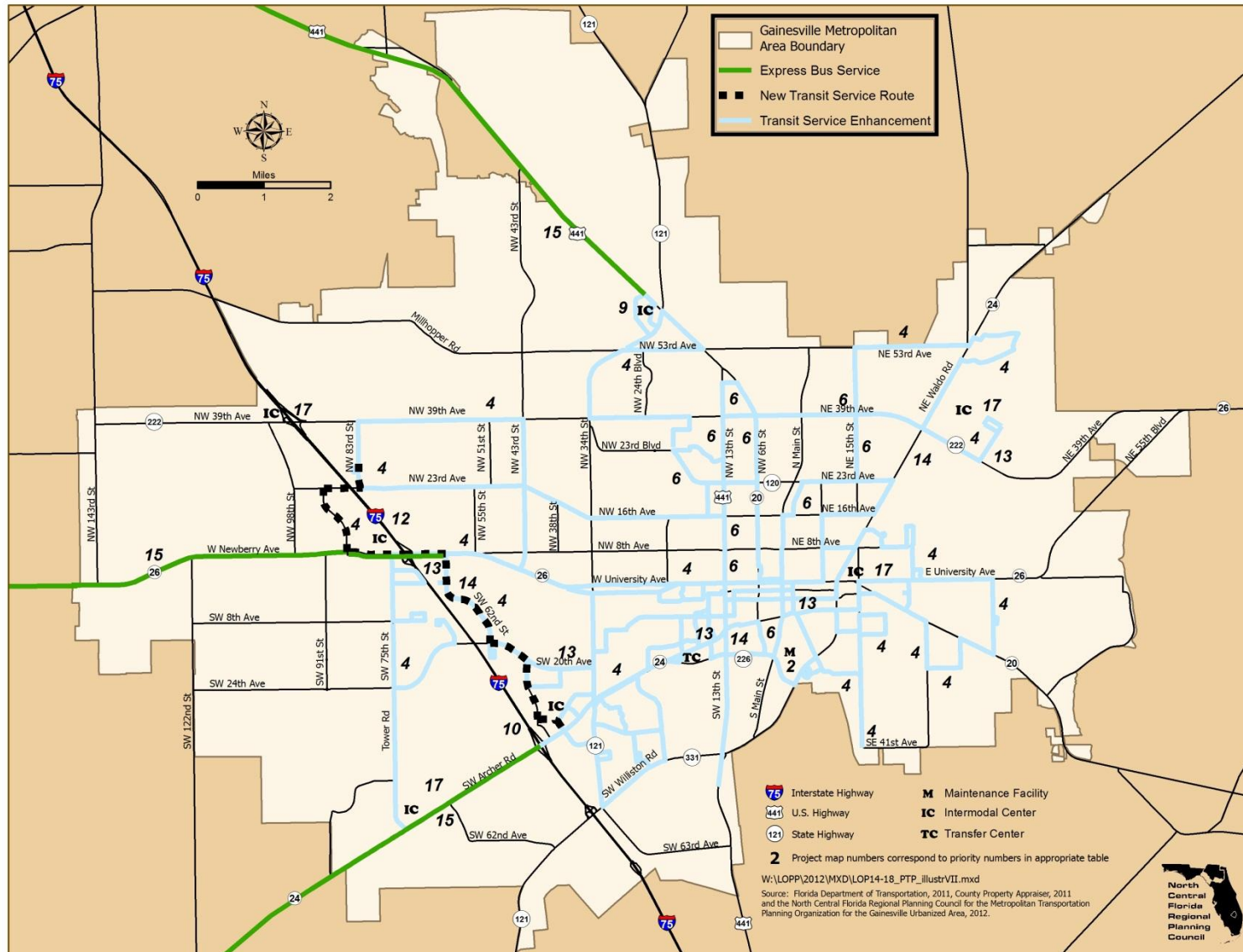


Table 6
Public Transportation Priorities
Fiscal Year 2013-14 to 2017-18
(within the Gainesville Metropolitan Area)

Number	Project	Location	Description
1 Funded Annually	<i>Block Grant- Public Transit Operating</i>	<i>RTS Systemwide</i>	<i>Operating Assistance [Funded annually by State]*</i>
2	<i>Enhance Bus Service Facilities-</i>	RTS Systemwide	Design, engineering and construction of RTS maintenance facilities [\$52.4 million unfunded; <i>RTS Phase 1 of 4 Maintenance Facility is funded</i>]
2A Partially Funded	<i>RTS Phase 2 of 4 Maintenance Facility</i>		
2B	<i>RTS Phase 3 of 4 Maintenance Facility</i>		
2C	<i>RTS Phase 4 of 4 Maintenance Facility</i>		
3 Partially Funded	<i>Capital Equipment- purchase of rolling stock</i>	<i>RTS Systemwide</i>	<i>30 new buses for replacement of aged fleet and expansion of services, including vehicles and service vehicles</i>
4	Service Development Funding - to include any of the TDP service enhancements	RTS Systemwide	Implementation of new routes, increased frequencies of routes and extended hours of service as per RTS Transit Development Plan, MTPO 2035 Long Range Transportation Plan and City Comprehensive Plan
5	Enhance Bus Service	RTS Systemwide	Implement increases of service frequencies of routes and extended hours of service according to the RTS Transit Development Plan and MTPO 2035 Transportation Plan
6	RTS Bus Stop Amenities	RTS Systemwide	Purchase and install bus shelters bicycle racks, etc.
7	Regional Intermodal Transportation Center	AT: Archer Road [SR 24] & SW 16 Avenue [SR 226] intersection	Planning, design, engineering and construction of a regional multimodal regional transportation center [site not determined]
8	Commuter Assistance	RTS Systemwide	Commuter Assistance Grants

Table 6 (Continued)
Public Transportation Priorities
Fiscal Years 2013-14 to 2017-18
(within the Gainesville Metropolitan Area)

Number	Project	Location	Description
9	Park-and-Ride Lot with bus service	AT: US 441 / SR 121	Construct park-n-ride lot with transit service
10	Archer Road [SR 24] Intermodal Center [Butler Plaza]	AT: Interstate 75	Construct transit transfer facility with park-n-ride lot- Butler Plaza
11	Capital Equipment- Purchase Fare Collection Equipment	RTS Systemwide	Purchase new fareboxes for existing fleet, upgrade vault, ticket vending and card service equipment
12	Newberry Road [SR 26] Transfer Station with Park-and-Ride	Oaks Mall Area	Station would include park-and-ride lot with connections to future BRT service
13	Capital- Construct BRT Stations	Along Preferred Configuration	Construct transit stations along preferred BRT configuration(s)
14	Service- Bus Rapid Transit (BRT)	Preferred BRT Configuration	Implement BRT service according to BRT Study and System Map
15	Capital- Construct Park-And-Ride Lots to Support Express Bus Service	Transportation Corridors- State Road 20; State Road 26; State Road 24; State Road 222; & US 441	Locations and funding to be determined
16	Limited Stop Bus Service to Outlying Municipalities or Unincorporated Alachua County to Park-And-Ride Lots or Traditional Neighborhood developments [note: no funding available and no locations determined- service priority contingent on community funding support]	Transportation Corridors- State Road 20; State Road 26; State Road 24; State Road 222; & US 441	Initiate full funding agreement with Alachua County for services outside Gainesville City Limit, including ADA trips. Implement park-and-ride service from areas outside Gainesville City Limit into the City of Gainesville, Cities to include Alachua, Archer, Hawthorne, High Springs and Newberry

Table 6 (Continued)
Public Transportation Priorities
Fiscal Years 2013-14 to 2017-18
(within the Gainesville Metropolitan Area)

Number	Project	Location	Description
17	Intermodal Centers	AT: Five Points - [SR 20 @ SR 24]; Gainesville Regional Airport; SpringHills / Santa Fe College [SR 222 @ I-75]; & Archer Road [SR 24] & Tower Road intersection	Construct transit transfer facility with park-n-ride lot [no sites determined]

Note: Projects in italic text are partially funded, as shown in the Transportation Improvement Program.

@ = at

BRT = Bus Rapid Transit

PD&E = Project Design and Environment Study

SR = State Road

US = United States

MTPO = Metropolitan Transportation Planning Organization for the Gainesville Urbanized Area

ADA = Americans with Disabilities Act of 1990

I = Interstate

RTS = Regional Transit System

TDP = Transportation Disadvantaged Plan

* Block Grant program is an annual formula program with funds provided by State legislation.

Initial Public Transportation Priorities were developed by Regional Transit System staff, based on the Regional Transit System Transit Development Plan.

Illustration VIII Right-of-Way Priorities State Highway System Fiscal Years 2013-14 to 2017-18



Table 7A
Right-of-Way Priorities - State Highway System
Fiscal Years 2013-14 to 2017-18
(within the Gainesville Metropolitan Area)

Number	Project	Location	Description
1 <i>Partially Funded</i>	<i>SE 16 Avenue [SR 226]</i>	<i>FM: Main Street [SR 329] TO: Williston Road [SR 331]</i>	<i>Acquire necessary ROW for reconstruction for MTPO-approved TSM Alternative</i>
2	NW 34 Street [SR 121]	FM: NW 16 Avenue TO: US 441	Acquire necessary ROW for construction of center turnlanes along this facility
3	BRT Corridor Infrastructure-partial	FM: Santa Fe Village TO: Gainesville Regional Airport	Acquire necessary ROW for installation of BRT infrastructure
4	Archer Road [SR 24] BRT	FM: MTPO Boundary TO: SW 45 Street	Acquire necessary ROW for Dedicated lane(s) design, and additional roadway capacity
5	Williston Road [SR 121]	FM: SW 62 Avenue TO: SW 35 Way	Acquire necessary ROW for additional roadway capacity

Note: Projects in italic text are partially funded, as shown in the Transportation Improvement Program.

BRT = Bus Rapid Transit

NW = Northwest

SR = State Road

TSM = Transportation System Management

MTPO = Metropolitan Transportation Planning Organization for the Gainesville Urbanized Area

FM = From

ROW = Right-of-way

US = United States

Initial Right-of-way Priorities were developed by Metropolitan Transportation Planning Organization for the Gainesville Urbanized Area, based on the 2035 Long Range Transportation Plan, the *Livable Community Reinvestment Plan*, Cost Feasible Plan projects.

Table 7B
Right-of-Way Priorities - Alachua County-Maintained Facilities
Fiscal Years 2013-14 to 2017-18
(within the Gainesville Metropolitan Area)

Number	Project	Location	Description
1	SW 20 Avenue Reconstruction	FM: SW 61 Street TO: SW 52 Street	Acquire necessary ROW to construct a 4-lane divided facility and multi-use path
2 <i>Partially Funded</i>	<i>SW 8 Avenue- Phase 2</i>	<i>FM: SW 143 Street TO: SW 122 Street</i>	<i>Acquire necessary ROW for 2-lane roadway and multi-use path</i>
3	NW 23 Avenue	FM: NW 59 Terrace TO: NW 51 Street	Acquire necessary ROW for 4-laning and resurfacing
4	NW 23 Avenue	FM: Ft. Clarke Boulevard TO: NW 83 Street	Acquire necessary ROW for 4-laning
5	SE 43 Street	FM: Hawthorne Road [SR 20] TO: University Avenue [SR 26]	Acquire necessary ROW for construction of two-way left turnlanes, multi-use path and signalization
6	SW 45 Street / SW 47 Street	FM: Archer Road [SR 24] TO: SW 30 Avenue	Acquire necessary ROW for new roadway with travel lanes, BRT dedicated transit lanes and multi-use path
7	SW 30 Avenue	FM: SW 47 Street TO: SW 43 Street	Acquire necessary ROW for new Interstate 75 overpass with travel lanes, BRT dedicated transit lanes and the Archer Braid Trail
8	NW 83 Street	FM: NW 39 Avenue [SR 222] TO: NW 46 Avenue	Acquire necessary ROW for new roadway with travel lanes, BRT dedicated transit lanes and the Millhopper Greenway
9	NW 83 Street	FM: NW 23 Avenue TO: NW 39 Avenue [SR 222]	Acquire necessary ROW for BRT dedicated transit lanes
10	Ft. Clarke Boulevard / NW 83 Street Corridor	FM: Newberry Road [SR 26] TO: NW 23 Avenue	Acquire necessary ROW for BRT dedicated transit lanes & new multimodal-only Interstate 75 overpass
11	NW 46 Avenue	FM: NW 98 Street TO: NW 83 Street	Acquire necessary ROW for new roadway with travel lanes, BRT dedicated transit lanes & new multi-use path and new Interstate 75 overpass

Note: Projects in italic text are partially funded, as shown in the Transportation Improvement Program.

BRT = Bus Rapid Transit
FM = From
Ft = Fort
NW = Northwest

ROW = Right-of-way
SR = State Road
SW = Southwest

Initial Right-of-way Priorities- Alachua County-Maintained Facilities were developed by Metropolitan Transportation Planning Organization for the Gainesville Urbanized Area, based on the 2035 Long Range Transportation Plan, the *Livable Community Reinvestment Plan*, Cost Feasible Plan projects. These projects were included in the 2035 Long Range Transportation Plan, the *Livable Community Reinvestment Plan* at the request of Alachua County.

Table 7C
Right-of-Way Priorities - City of Gainesville-Maintained Facilities
Fiscal Years 2013-14 to 2017-18
(within the Gainesville Metropolitan Area)

Number	Project	Location	Description
NA	SE 4 Street- Phase 2	FM: Williston Road [SR 331] TO: Depot Avenue	Acquire necessary ROW for reconstruction
NA	SW 62 Boulevard	FM: Archer Road [SR 24] TO: Newberry Road [SR 24]	Acquire necessary ROW for four lanes plus two additional BRT lanes in the middle
NA	Hull Road Extension	FM: SW 20 Avenue TO: SW 34 Street [SR 121]	Identify adequate right-of-way for MTPO-approved 150-foot cross-section

Note: Projects in italic text are partially funded, as shown in the Transportation Improvement Program.

BRT = Bus Rapid Transit

NA = Not Applicable

SR = State Road

SW = Southwest

MTPO = Metropolitan Transportation Planning Organization for the Gainesville Urbanized Area

FM = From

ROW = Right-of-way

SE = Southeast

Initial Right-of-way Priorities- City of Gainesville-Maintained Facilities were developed by Metropolitan Transportation Planning Organization for the Gainesville Urbanized Area, based on the 2035 Long Range Transportation Plan, the *Livable Community Reinvestment Plan*, Cost Feasible Plan projects. These projects were included in the 2035 Long Range Transportation Plan, the *Livable Community Reinvestment Plan* at the request of the City of Gainesville.

Illustration IX
Safe Routes to School Priorities
Fiscal Years 2013-14 to 2017-18

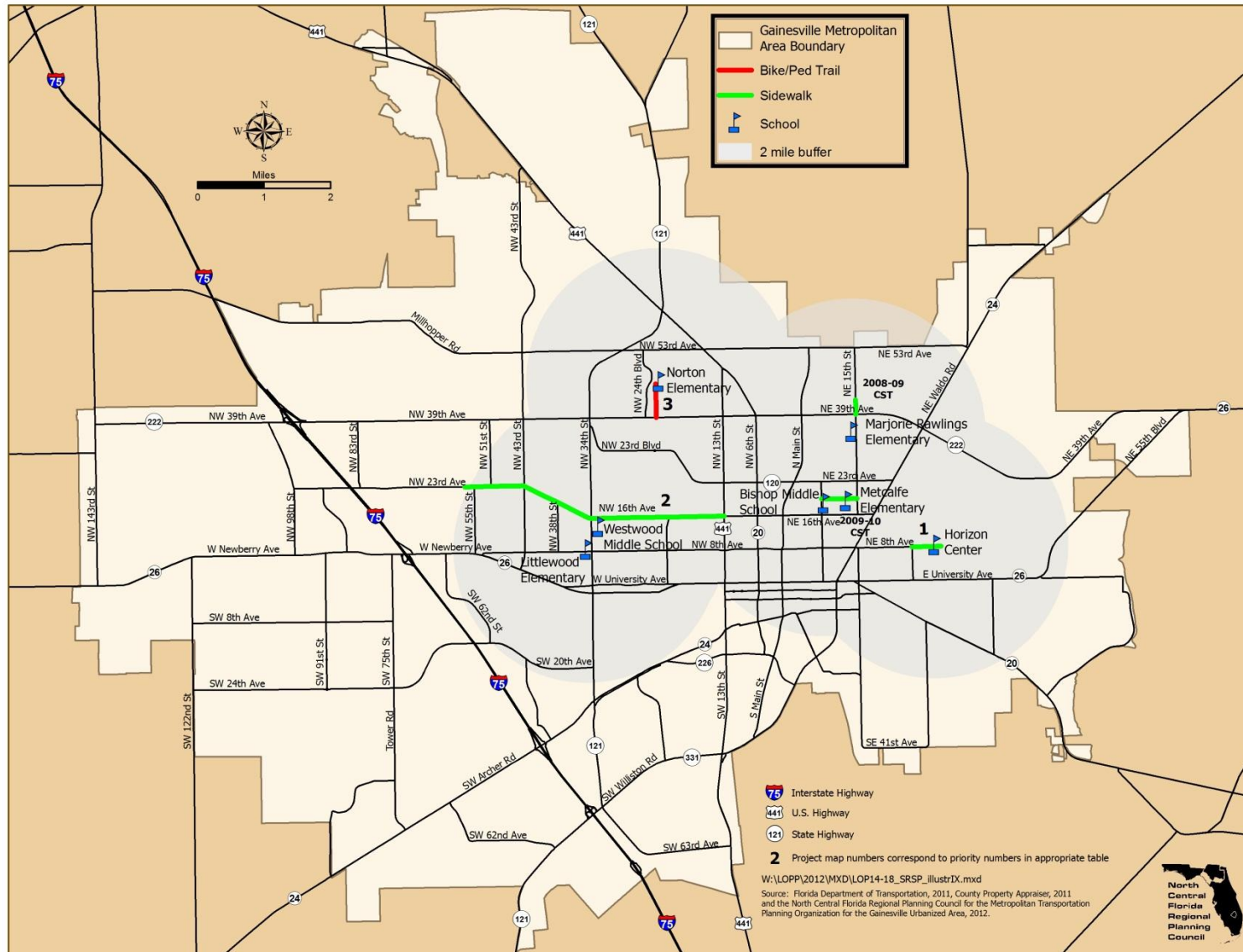


Table 8
Safe Routes to School* Priorities
Fiscal Years 2013-14 to 2017-18
(within the Gainesville Metropolitan Area)

Number	Project	Location	Description
1	NE 8 Avenue	FM: NE 25 Street TO: 2800 Block	Construct pedestrian access to the Horizon Center/Lofton School
2	NW 23 Avenue / NW 16 Boulevard / NW 16 Avenue Corridor	FM: NW 57 Terrace TO: NW 13 Street	Widen sidewalks to accommodate multimodal use
3	Norton Trail	FM: NW 39 Avenue TO: NW 45 Avenue	Construct pedestrian/bicycle access to Norton Elementary School

Note: Projects in italic text are partially funded, as shown in the Transportation Improvement Program.

FM = From
NW = Northwest

NE = Northeast

* Kindergarten through 8-Grade within a 2-mile radius of a school campus

Initial Safe Routes to School Priorities were developed by the Alachua County Traffic Safety Team.

Project Priorities



Table 9
Safety Priorities
Fiscal Years 2013-14 to 2017-18
(within the Gainesville Metropolitan Area)

Number	Project	Location	Description
1	SW 62 Boulevard	AT: NW 4 Place / Oaks Mall entrance	Access management*
2	Santa Fe College Area	Areawide	Traffic analysis on/off campus
3 <i>Partially Funded</i>	<i>SW 20 Avenue</i>	<i>AT: SW 61 Street</i>	<i>Install eastbound left turnlane on SW 20 Avenue</i>
4	Hidden Oaks Elementary School Right Turnlane	AT: NW 23 Avenue / Fort Clarke Boulevard	Construct right turnlane into school
5	NW 13 Street [US 441]	AT: NW 6 Street [SR 20]	Realign intersection
6	University Avenue [SR 26]	AT: Waldo Road [SR 24]	Intersection modifications to enhance pedestrian/cyclist crossing consisting of: 1. adding Rail/Trail Signage to provide wayfinding and increase aesthetics 2. adding ladder striping to crosswalks 3. moving the stop bars further back 4. install a vegetative median on State Road 331 (Williston Road) at the State Road 26 (E. University Avenue) intersection
7	SW 34 Street [SR 121]	AT: Hull Road	Extend southbound left turnlane

Note: Projects in italic text are partially funded, as shown in the Transportation Improvement Program.

E = East

NW = Northwest

SW = Southwest

*At this intersection, the observed major crash pattern is angle collisions involving southbound through and eastbound left-turning vehicles. Eastbound vehicles exiting the Oaks Mall fail to yield the right-of-way and collide with southbound vehicles. This type of crash accounted for 82% of all crashes at this intersection. Peak periods were observed between 1:00 pm to 2:00 pm and 5:00 pm to 6:00 pm. Therefore, explore the possibility of a raised median on NW 62 Boulevard to restrict turning movements, particularly eastbound left. Traffic exiting the Oaks Mall traveling towards north has several other exit options with signalized and non-signalized driveways along State Road 26/Newberry Road and a signalized driveway at NW 62 Street & NW 1 Place.

Initial Safety Priorities were developed by the Alachua County Traffic Safety Team.

Project Priorities

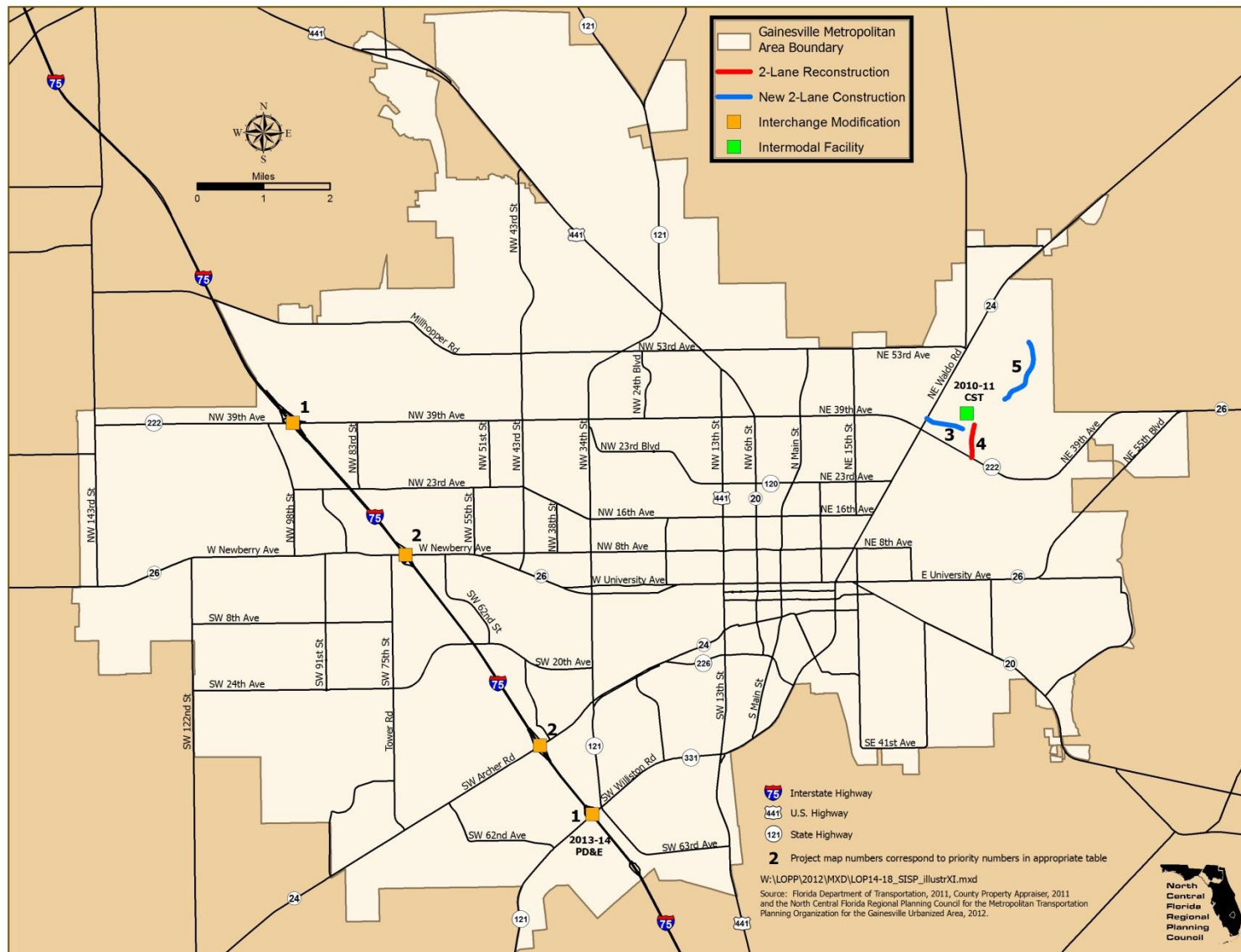


Table 10
Strategic Intermodal System Priorities
Fiscal Years 2013-14 to 2017-18
(within the Gainesville Metropolitan Area)

Number	Project	Location	Description
1 Partially Funded (PD&E)	Interstate 75 Interchange	AT: Williston Road [SR 121] AT: NW 39 Avenue [SR 222]	Interchange modifications per SIS Cost Feasible Plan
2	Interstate 75 Interchange	AT: Archer Road [SR 24] AT: Newberry Road [SR 26]	Interchange modifications per SIS Cost Feasible Plan
3 Partially Funded	New gateway entrance to the Gainesville Regional Airport from Waldo Road [SR 24]	FM: Waldo Road [SR 24] TO: Airport Terminal (north of N 39 Avenue [SR 222])	Ingress-egress to the airline terminal and modal connectivity to the north central Florida region
4	NE 39 Avenue [SR 222] access to airport	FM: NE 39 Avenue [SR 222] TO: Airport Terminal (Gainesville Regional Airport)	Reconfigure ingress-egress, improve curb-and-gutter system, add bike lanes and sidewalks, install stormwater drainage, install traffic guidance system of signs and signals; and install bike lockers

Table 10 (Continued)
Strategic Intermodal System Priorities
Fiscal Years 2013-14 to 2017-18
(within the Gainesville Metropolitan Area)

Number	Project	Location	Description
5	Extension of Airport Industrial Park Road	FM: Airport service road TO: NE 49 Road (east end of Airport Industrial Park)	Extend existing service road to provide access to Waldo Road (Extend existing access road through east end of Airport Industrial Park, from Waldo Road [SR 24])

- Notes: 1. Projects in italic text are partially funded, as shown in the Transportation Improvement Program.
2. Priorities #3, #4, and #5 listed above are endorsed by the Metropolitan Transportation Planning Organization for the Gainesville Urbanized Area with the following conditions:
- A. Provided they do not compete with roadway capacity construction funding typically available from the Surface Transportation Program; and
 - B. With the understanding that these funds do not come from existing funds that could be used for other projects within the Gainesville Metropolitan Area.

FM = From
NE = Northeast
PD&E = Project Design and Environment
SR = State Road
MTPO = Metropolitan Transportation Planning Organization for the Gainesville Urbanized Area

N = North
NW = Northwest
SIS = Strategic Intermodal System

Initial Strategic Intermodal System Priorities were developed by Gainesville Regional Airport staff and the Metropolitan Transportation Planning Organization for the Gainesville Urbanized Area based on the Strategic Intermodal System Cost Feasible Plan.

THIS PAGE LEFT BLANK INTENTIONALLY

Illustration XII
Surface Transportation Program Fund Priorities
Fiscal Years 2013-14 to 2017-18

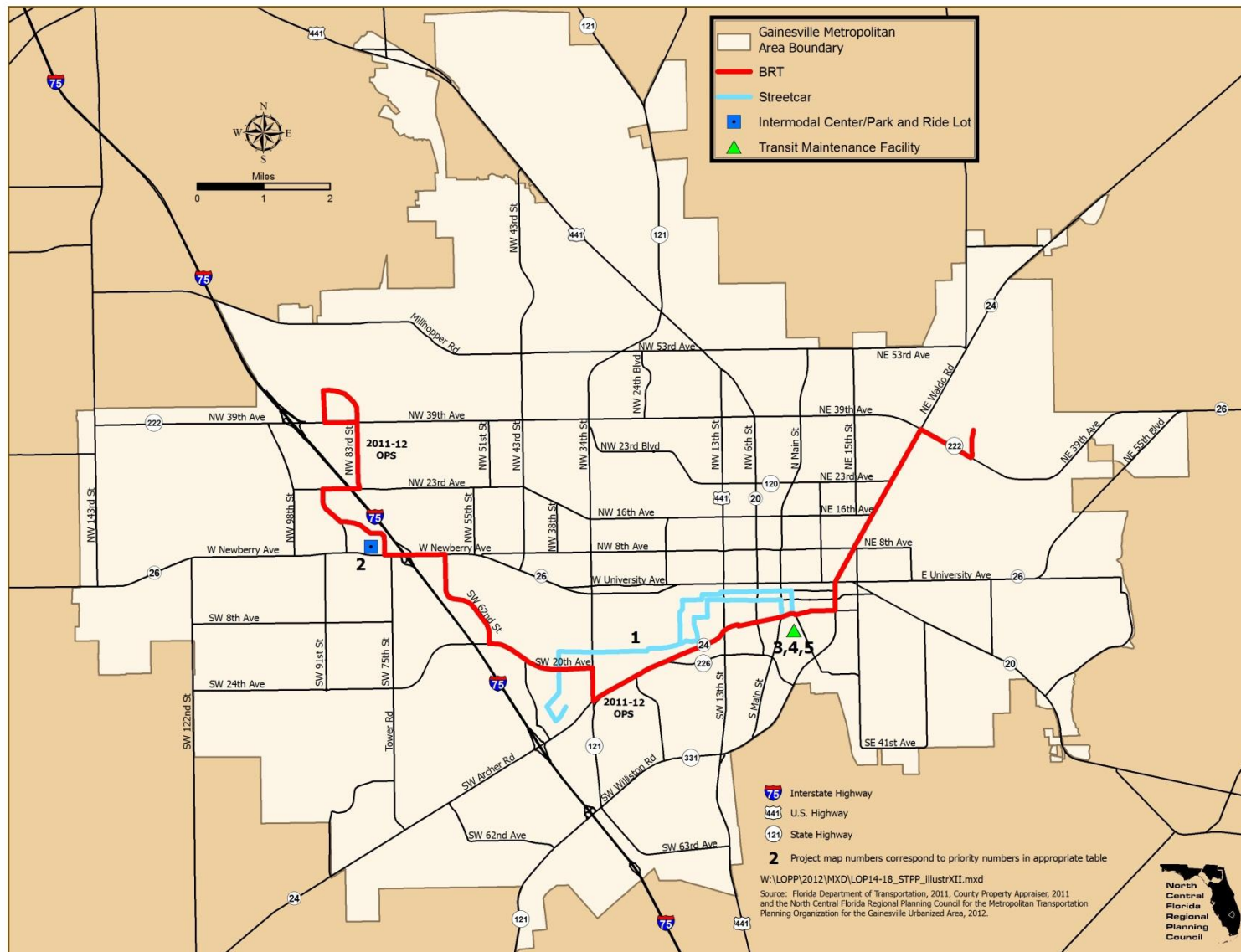


Table 11
Surface Transportation Program Fund Priorities
Fiscal Years 2013-14 to 2017-18
(within the Gainesville Metropolitan Area)

Number	Project	Location	Description
1	Streetcar Feasibility Study	FM: Downtown TO: Butler Plaza (via University of Florida)	Conduct Streetcar feasibility study
2	Intermodal Center/Park-N-Ride Lot	AT: Ft. Clarke Boulevard / Newberry Road area	Construct Intermodal Center / Park-N-Ride Lot
3 <i>Partially Funded</i>	<i>Transit Maintenance Facility</i>	<i>AT: RTS location</i>	<i>Construct transit maintenance facility expansion- Phase 2 of 4</i>
4	Transit Maintenance Facility	AT: RTS location	Construct transit maintenance facility expansion- Phase 3 of 4
5	Transit Maintenance Facility	AT: RTS location	Construct transit maintenance facility expansion- Phase 4 of 4

Note: Projects in italic text are partially funded, as shown in the Transportation Improvement Program.

FM = From

Ft. = Fort

RTS = Regional Transit System

Initial Surface Transportation Program Fund Priorities were developed by Metropolitan Transportation Planning Organization for the Gainesville Urbanized Area, based on the 2035 Long Range Transportation Plan, the *Livable Community Reinvestment Plan*, Cost Feasible Plan projects.

Illustration XIII
Traffic Operations Priorities Local Facilities
Fiscal Years 2013-14 to 2017-18



Table 12A
Traffic Operations Priorities - State Highway System Only
Fiscal Years 2013-14 to 2017-18
(within the Gainesville Metropolitan Area)

Number	Project	Location	Description
1	Newberry Road [SR 26]	AT: NW 76 Street	Reconstruction of traffic signal
2	University Avenue [SR 26]	AT: Hawthorne Road [SR 20]	Reconstruction of traffic signal
3	Newberry Road [SR 26]	FM: Ft Clarke Boulevard TO: NW 8 Avenue	Corridor study
4	SW 34 Street [SR 121]	AT: Archer Road [SR 24]	Enhance right turn movement accommodation, such as the accommodation at the SW 34 Street at SW 20 Avenue intersection
5	NW 13 Street [US 441]	AT: NW 6 Street [SR 20]	Intersection realignment/construction/signalization
6	NW 13 Street [US 441]	FM: 2100 block TO: 2200 block	Access management and pedestrian refuge islands
7 Partially Funded*	<i>SW 13 Street [US 441]</i>	<i>AT: Archer Road [SR 24]</i>	<i>Signal reconstruction and retaining wall modifications</i>
8 Partially Funded	<i>SW 34 Street [SR 121]</i>	<i>AT: Hull Road</i>	<i>Extend southbound left turnlane; install northbound right exclusive right turnlane variable message board</i>
9	SW 34 Street [SR 121]	AT: Radio Road AT: SW 20 Avenue	Traffic signal replacement to address structural deficiency
10	Hawthorne Road [SR 20]	AT: SE 43rd Street	Intersection modification
11	Williston Road [SR 121]	AT: SW 62nd Avenue	Intersection modification
12 Partially Funded	<i>Archer Road [SR 24]</i>	<i>AT: Center Drive / VA Entrance</i>	<i>Traffic signal replacement to address structural deficiency</i>

Table 12A (Continued)
Traffic Operations Priorities- State Highway System Only
Fiscal Years 2013-14 to 2017-18
(within the Gainesville Metropolitan Area)

Number	Project	Location	Description
13	University Avenue [SR 26]	AT: W 3 Street, W 2 Street, W 1 Street, E 1 Street & E 3 Street	Replace five existing galvanized mast arms with MTPO-approved mast arms
14	Traffic Signal Upgrade - Non-SHS	At various intersections (see Table 12B)	Replace existing signal with horizontal mast arm signals

Note: Projects in italic text are partially funded, as shown in the Transportation Improvement Program.

* This project is partially funded with University of Florida Campus Development Agreement funds. Initial Traffic Operations Priorities were developed by the City of Gainesville/Alachua County Traffic Operations Team.

FM = From	NW = Northwest
PD&E = Project Design and Environment	SE = Southeast
SHS = State Highway System	SR = State Road
SW = Southwest	VA = Veterans Administration
MTPO = Metropolitan Transportation Planning Organization for the Gainesville Urbanized Area	

Table 12B
Traffic Operations Priorities - Local Facilities
Fiscal Years 2013-14 to 2017-18
(within the Gainesville Metropolitan Area)

Number	Project	Location	Description
1	NE 8 Avenue	AT: NE 7 Street	Traffic signal reconstruction
2	NW 8 Avenue	AT: NW 10 Street	Traffic signal reconstruction
3	SE 4 Avenue	AT: SE 3 Street	Traffic signal reconstruction
4	SE 3 Avenue	AT: SE 15 Street	Replace traffic signal with roundabout
5	NW 16 Avenue	AT: NW 2 Street	Traffic signal reconstruction to mast arms
6	NW 16 Avenue	AT: NW 16 Terrace	Traffic signal reconstruction to mast arms
7	NE 16 Avenue	AT: NE 9 Street	Traffic signal reconstruction to mast arms
8	NW 16 Avenue	AT: NW 22 Terrace	Traffic signal reconstruction to mast arms
9	NW 23 Avenue	AT: NW 55 Street	Traffic signal reconstruction to mast arms
10	NW 23 Avenue	AT: NW 51 Street	Traffic signal reconstruction to mast arms
11	NW 16 Boulevard	AT: NW 41 Street	Traffic signal reconstruction to mast arms

Note: Projects in italic text are partially funded, as shown in the Transportation Improvement Program.

NE = Northeast

NW = Northwest

Initial Traffic Operations Priorities were developed by the City of Gainesville/Alachua County Traffic Operations Team.

Illustration XIV
Transit Corridor Development Priorities
Fiscal Years 2013-14 to 2017-18



Table 13
Transit Corridor Development Priorities
Fiscal Years 2013-14 to 2017-18
(within the Gainesville Metropolitan Area)

Number	Project	Location	Description
1	Newberry Road [SR 26]	FM: City of Newberry TO: City of Gainesville	Express bus service from Newberry Road park-n-ride lot to the City of Gainesville
2	Archer Road [SR 24]	FM: City of Archer TO: Gainesville	Express bus service from Archer Road park-n-ride lot to the City of Gainesville
3	US 441 [SR 25]	FM: City of High Springs TO: Gainesville	Express bus service from High Springs and Alachua to the City of Gainesville
4	Hawthorne Road [SR 20]	FM: City of Hawthorne TO: Gainesville	Express bus service from Hawthorne to the City of Gainesville

FM = From
US = United States

SR = State Road

Initial Transit Corridor Development Priorities were developed by Metropolitan Transportation Planning Organization for the Gainesville Urbanized Area, based on the Regional Transit System Transit Development Plan.

Table 14
Transportation Disadvantaged Priorities - Transportation Disadvantaged Trust Fund
Fiscal Years 2013-14 to 2017-18
(Alachua County Areas Outside of the Gainesville Metropolitan Area)

Number	Project	Location	Description
1	Provision of paratransit trips for vital medical purposes (dialysis, cancer care).	Areas outside of the Gainesville Metropolitan Area	Provide paratransit trips to eligible individuals with state TD Trust Funds.
2	Provision of paratransit trips for medical purposes (doctor appointments, pharmacy, physical therapy).	Areas outside of the Gainesville Metropolitan Area	Provide paratransit trips to eligible individuals with state TD Trust Funds.
3	Provision of paratransit trips for employment purposes.	Areas outside of the Gainesville Metropolitan Area	Provide paratransit trips to eligible individuals with state TD Trust Funds.
4	Provision of paratransit trips for shopping purposes.	Areas outside of the Gainesville Metropolitan Area	Provide paratransit trips to eligible individuals with state TD Trust Funds.
5	CTC Paratransit Van Fleet Expansion- TD Trust Funds	Countywide	Purchase two lift-equipped paratransit vans each year with any TD Trust Funds remaining after all TD Trust Fund paratransit trip priorities have been fulfilled.

- Notes: 1. The grant funds allocated from the Transportation Disadvantaged Trust Fund are for the specific purpose of purchasing passenger trips for non-sponsored transportation disadvantaged individuals, or for equipment to be utilized by a Community Transportation Coordinator. Twenty-five percent of the Transportation Disadvantaged Trust Fund allocation may be spent to purchase capital equipment.
2. The Alachua County Transportation Disadvantaged Coordinating Board, in cooperation with the Community Transportation Coordinator, prioritize the use of the state Transportation Disadvantaged Trust Funds. The current and past Transportation Disadvantaged Trust Fund allocations are sufficient to provide trips under priorities 1 and 2 on a first come, first served basis.

CTC = Community Transportation Coordinator

TD = Transportation Disadvantaged

Initial Transportation Disadvantaged Priorities were developed by the Alachua County Transportation Disadvantaged Coordinating Board.

Table 15
Transportation Disadvantaged Priorities - Federal Transit Administration
Section 5310 - Capital Funding/Equipment Program
Fiscal Years 2013-14 to 2017-18
(Alachua Countywide)

Number	Project	Location	Description
1	RTS Paratransit Van Fleet Expansion- Section 5310 funds	Countywide	Purchase a replacement vehicle to provide transportation for the elderly and disabled in Alachua County and the City of Gainesville
2*	Quality of Life Community Services Accessible Taxicab Fleet Expansion- Section 5310 funds	Countywide	Purchase accessible taxicab vehicles

Note: Capital expenditures shall be in accordance with United States Code Section 5310 funding eligibility criteria.

* In accordance with Chapter 427, Florida Statutes, the service provider (Quality of Life Community Services Taxicab) must execute a coordination agreement with the Alachua County Community Transportation Coordinator (MV Transportation) in order to receive these funds.

RTS = Regional Transit System

Initial Transportation Disadvantaged Priorities were developed by the Alachua County Transportation Disadvantaged Coordinating Board.

Table 16
Transportation Disadvantaged Priorities - Federal Transit Administration
Section 5311 - Nonurbanized Area Formula Program
Fiscal Years 2013-14 to 2017-18
(Alachua County Areas Outside of the Gainesville Urbanized Area)

Number	Project	Location	Description
1 Partially Funded	<i>Provision of paratransit trips that cannot be provided with TD Trust Funds.</i>	<i>Areas outside of the Gainesville Urbanized Area</i>	<i>Maintain the fixed route between the Oaks mall and Santa Fe College in the unincorporated portions of the Gainesville Urbanized Area. Provide demand response service in the nonurbanized areas of Alachua County</i>
2	RTS Paratransit Van Fleet Expansion- Section 5311 funds	Countywide- Nonurbanized	Purchase two demand response vehicles

Note: Capital and operating expenditures shall be in accordance with United States Code Section 5311 funding eligibility criteria.

RTS = Regional Transit System

TD = Transportation Disadvantaged

Initial Transportation Disadvantaged Priorities were developed by the Alachua County Transportation Disadvantaged Coordinating Board.

Table 17
Transportation Disadvantaged Priorities - Federal Transit Administration
Section 5316 - Job Access And Reverse Commute Program
Fiscal Years 2013-14 to 2017-18
(Gainesville Metropolitan Area)

Number	Project	Location	Description
1	Job Access and Reverse Commute Program	Areas within the Gainesville Metropolitan Area and outside the Regional Transit System fixed-route ADA service area	Use FTA grant to provide job access and job-related transportation to TD-eligible individuals.

ADA = Americans with Disabilities Act of 1990
TD = Transportation Disadvantaged

FTA = Federal Transit Administration

Initial Transportation Disadvantaged Priorities were developed by the Alachua County Transportation Disadvantaged Coordinating Board.

Table 18
Transportation Disadvantaged Priorities - Federal Transit Administration
Section 5317 - New Freedom Program
Fiscal Years 2013-14 to 2017-18
(Gainesville Metropolitan Area/Alachua County)

Number	Project	Location	Description
1	New Freedom Program	Areas within the Gainesville Metropolitan Area and outside the Regional Transit System fixed-route Americans with Disabilities Act of 1990 service area	Use FTA grant to provide paratransit service to disabled citizens
2	Regional Transit System Capital Purchase of Replacement Paratransit Vehicle	Countywide	Purchase replacement paratransit vehicle to provide transportation to the elderly and disabled in Alachua County and the City of Gainesville
3*	Quality of Life Community Services Taxicab Operating Capital- Section 5317 funds	Countywide	Operating subsidies for transportation disadvantaged persons needing taxicab service

* In accordance with Chapter 427, Florida Statutes, the service provider (Quality of Life Community Services Taxicab) must execute a coordination agreement with the Alachua County Community Transportation Coordinator (MV Transportation) in order to receive these funds.

FTA = Federal Transit Administration

Initial Transportation Disadvantaged Priorities were developed by the Alachua County Transportation Disadvantaged Coordinating Board.

THIS PAGE LEFT BLANK INTENTIONALLY

Illustration XV
Transportation Regional Incentive Program Priorities
Fiscal Years 2013-14 to 2017-18



Table 19
Transportation Regional Incentive Program Priorities
Fiscal Years 2013-14 to 2017-18
(within the Gainesville Metropolitan Area)

Number	Project	Location	Description
1	SW 62 Connector	FM: Williston Road [SR 331] TO: Newberry Road [SR 26]	SW 62 Boulevard extension project, including extension of SW 40 Boulevard south to SW 34 Street, extending it east to connect at Williston Road – regionally significant project: 1. would alleviate congestion along Interstate-75 between Newberry Road and Williston Road, and other state roads such as Archer Road [SR 24], SW 34 Street [SR 121], Newberry Road [SR 26]; 2. improve system connectivity; and 3. add roadway capacity.
2	Archer Road	FM: Levy County line TO: Tower Road	Reconstruct as a 4-lane facility

Note: Projects in italic text are partially funded, as shown in the Transportation Improvement Program.

FM = From
SW = Southwest

SR = State Road

Initial Transportation Regional Incentive Program Priorities were developed by Metropolitan Transportation Planning Organization for the Gainesville Urbanized Area, based Alachua County and City of Gainesville Comprehensive Plan Transportation Elements.

THIS PAGE LEFT BLANK INTENTIONALLY

Appendix A Transportation Plans and Programs - Eight Metropolitan Planning Factors to be Considered

THIS PAGE LEFT BLANK INTENTIONALLY

Appendix A: Transportation Plans and Programs - Eight Metropolitan Planning Factors to be Considered

The following is a listing of the factors to be considered pursuant to the Safe, Accountable, Flexible, Efficient Transportation Equity Act: A Legacy for Users that was enacted August 10, 2005 as Public Law 109-59. As required by the Act, these factors are being addressed in the development of transportation plans and programs.

- FACTOR 1 The metropolitan transportation planning process shall provide for consideration of projects and strategies that will support the economic vitality of the metropolitan area, especially by enabling global competitiveness, productivity, and efficiency;
- FACTOR 2 The metropolitan transportation planning process shall provide for consideration of projects and strategies that will increase the safety of the transportation system for motorized and nonmotorized users;
- FACTOR 3 The metropolitan transportation planning process shall provide for consideration of projects and strategies that will increase the security of the transportation system for motorized and nonmotorized users;
- FACTOR 4 The metropolitan transportation planning process shall provide for consideration of projects and strategies that will increase the accessibility and mobility options available to people and for freight;
- FACTOR 5 The metropolitan transportation planning process shall provide for consideration of projects and strategies that will protect and enhance the environment, promote energy conservation, and improve quality of life;
- FACTOR 6 The metropolitan transportation planning process shall provide for consideration of projects and strategies that will enhance the integration and connectivity of the transportation system, across and between modes, for people and freight;
- FACTOR 7 The metropolitan transportation planning process shall provide for consideration of projects and strategies that will promote efficient system management and operation; and
- FACTOR 8 The metropolitan transportation planning process shall provide for consideration of projects and strategies that will emphasize the preservation of the existing transportation system.

THIS PAGE LEFT BLANK INTENTIONALLY

Appendix B

Roads Operating at an Unacceptable Highway Level of Service

THIS PAGE LEFT BLANK INTENTIONALLY

Appendix B: Roads Operating at an Unacceptable Highway Level of Service

Table B-1
Roads Operating at an Unacceptable Highway Level of Service
Gainesville Metropolitan Area, 2010
[does not include reserve trips]

Roadway Facility	From	To	2010 AADT	2010 LOS	2009 MSV	2010 MSV
SW 13 Street [US 441] (S-3)	Archer Road	University Avenue	35,000	F	28,200	28,200
NW 13 Street [US 441]. (S-4)	University Avenue	NW 29 Road	29,500	F	28,200	28,200
Newberry Road [SR 26] (S-14)	NW 122 Street	Interstate 75 (West Ramp)	38,500	F	35,500	35,500
Newberry Road [SR 26] (S-15)	Interstate 75 (West Ramp)	NW 8 Avenue	49,500	F	48,500	43,700
SW 2 Avenue [SR 26A] (S-21)	Newberry Road	SW 34 Street	15,000	E	12,495	12,495
NW 34 Street [SR 121] (S-25)	University Avenue	NW 16 Avenue	18,200	F	15,960	15,960
Archer Road [SR 24] (S-47)	GMA Boundary	SW 75 Street	18,500	E	15,960	15,960
Archer Road [SR 24] (S-55)	SW 34 Street	SW 16 Avenue	52,250	F	50,300	50,300
NW 23 Avenue (A-9)	NW 98 Street	NW 55 Street	15,770	F	15,675	15,675
SW 20 Avenue (A-16)	SW 62 Boulevard	SW 34 Street	21,524	F	15,675	15,675
NW 83 Street (A-23)	NW 23 Avenue	NW 39 Avenue	14,157	F	13,668	13,668
Radio Road/ Museum Drive (G-32)	SW 34 Street	SW 13 Street	13,621	F	11,260	11,260
Gale Lemerand Drive (G-39)	Archer Road	University Avenue	12,368	F	10,530	10,530

AADT = Average Annual Daily Traffic GMA = Gainesville Metropolitan Area NW = Northwest
LOS = Level of Service MSV = Maximum Service Volume SW = Southwest

Maximum service volume for Level of Service D is not attainable.

* Roadway is within the City of Gainesville Transportation Concurrency Exception Area.

THIS PAGE LEFT BLANK INTENTIONALLY

Appendix C

2035 Long Range Transportation Plan - Livable Community Reinvestment Plan

THIS PAGE LEFT BLANK INTENTIONALLY

Appendix C: 2035 Long Range Transportation Plan - Livable Community Reinvestment Plan

Table C-1
Year 2035 Bicycle/Pedestrian Cost Feasible Plan

Segment Priority	Description	From / To	Length (Miles)	Estimated Cost in 2007 Dollars (Millions)
Surface Transportation Program Enhancements <i>(Cost Feasible Plan Revenues = \$11.5 million)</i>				
B-1	Cross Campus Greenway	Archer Road to SW 34 Street	2.1	\$1.9
B-2	Hull Road Parking Area	SW 34 Street to End of Hull Road Parking Area	0.2	\$0.2
B-3	Hull Road Connector	Hull Road Parking Area/SW 20 Avenue	0.5	\$0.5
B-4	Lake Kanapaha Trail	Tower Road west to Interstate 75	2.3	\$2.1
B-5	SW 34 Street Grade Separated Crossing	SW 34 Street at Hull Road	0.2	\$7.0
Total Surface Transportation Program Enhancement Funded Projects				\$11.7
Local Funds- Alachua County Projects (identified as Cost Feasible by Year 2020)				
NA	SW 8 Avenue multi-use offroad facility	SW 122 Street to SW 91 Street	2.0	\$0.4
NA	NW 98 Street multi-use offroad facility	NW 23 Avenue to NW 39 Avenue	1.0	\$0.3
Total Alachua County Projects				\$0.7
Local Funds- City of Gainesville Projects (identified as Cost Feasible by Year 2015)				
NA	SW 35 Place sidewalk	SW 34 Street to SW 23 Terrace	1.1	\$0.5
Total City of Gainesville Projects				\$0.5
Grand Total Bicycle/Pedestrian Projects				\$12.9

NA = Not attainable
SW = Southwest

NW = Northwest

Table C-2
Year 2035 Roadway Cost Feasible Plan

Priority	Description	From / To	Length (Miles)	Estimated Cost in 2010 Dollars (Millions)
Strategic Intermodal System (Cost Feasible Plan Revenues = \$6.4 Million)				
-	Interstate 75 Interchange Modifications	AT Williston Road AT Archer Road AT Newberry Road AT NW 39 Avenue	-	\$6.4
Total Strategic Intermodal System				\$6.4
State Highway System (Cost Feasible Plan Revenues = \$92.0 Million Year of Expenditure Dollars)				
S-1	State Road 226 (SE 16 Avenue) Widen To Four Lanes	Main Street To Williston Road	0.6	\$15.0
S-2	State Road 121 (NW 34 Street)- Construction Of Turnlanes To Improve Safety And Traffic Flow	NW 16 Avenue to US 441	3.5	\$6.0
S-3	State Road 26 (University Avenue) Multimodal Emphasis Corridor Study (See Footnote ^a)	Gale Lemerand Drive to Waldo Road	1.5	\$4.75
S-4	US 441 (W. 13 Street) Multimodal Emphasis Corridor Study (See Footnote ^a)	NW 33 Avenue to Archer Road	2.8	\$4.75
S-5	Waldo Road Multiway Boulevard Redesign To Support Bus Rapid Transit, Multi-Trail And Corridor Redevelopment Study (PD&E) [See Footnote ^b]	University Avenue to NE 39 Avenue	2.5	\$3.0
S-6	BRT Corridor Infrastructure-Partial	Santa Fe Village to Gainesville Regional Airport	14.0	\$28.0
7	State Road 24 (Archer Road) Brt Dedicated Lane(S) Design, Additional Roadway Capacity And Corridor Management Study (PD&E)	MTPO Boundary to SW 45 Street	3.5	\$0.5
8	State Road 121 (Williston Road) Additional Roadway Capacity And Corridor Management Study (PD&E)	SW 62 Avenue to SW 35 Way	0.5	\$0.5
Total State Highway System				\$62.5

Table C-2 (Continued)
Year 2035 Roadway Cost Feasible Plan

Priority	Description	From / To	Length (Miles)	Estimated Cost (Millions)
Alachua County Transit and Roadway Projects <i>(local funds identified as Cost Feasible by the Year 2020)</i>				
1	SW 20 Avenue , four laning and multi-use path	SW 52 Blvd to SW 61 Blvd	0.5	\$8.8
2	SW 8 Avenue-Phase 2 , two lane roadway and multi-use path	SW 122 Street to SW 143 Street	0.7	\$2.7
3	NW 23 Avenue , four laning and resurfacing	NW 51 Street to NW 59 Terrace	0.7	\$1.8
4	NW 23 Avenue , four laning	NW 83 Street to Ft. Clarke Blvd.	0.5	\$12.0
5	SE 43 Street , construction of two-way left turn lanes, multi-use path and signalization	SR 26 (University Avenue) to SR 20 (Hawthorne Road)	1.1	\$0.9
6	SW 45 / 47 Street , new roadway with travel lanes, BRT Dedicated Transit Lanes and multi-use path	Archer Road to SW 30 Avenue	0.8	\$4.5
7	SW 30 Avenue , new Interstate 75 overpass with travel lanes, BRT Dedicated Transit Lanes and the Archer Braid Trail	SW 43 Street to SW 47 Street	0.5	\$13.0
8	NW 83 Street , new roadway with travel lanes, BRT Dedicated Transit Lanes and the Millhopper Greenway	NW 46 Avenue to NW 39 Avenue (SR 222)	0.4	\$2.5
9	NW 83 Street BRT Dedicated Transit Lanes	NW 23 Avenue to NW 39 Avenue	1.0	\$7.8
10	Ft. Clarke/NW 83 Street Corridor , BRT Dedicated Transit Lanes & new multi-modal only Interstate 75 overpass	NW 23 Avenue to Newberry Road (SR 26)	1.0	\$14.0

Table C-2 (Continued)
Year 2035 Roadway Cost Feasible Plan

Priority	Description	From / To	Length (Miles)	Estimated Cost (Millions)
11	NW 46 Avenue , new roadway with travel lanes, BRT Dedicated Transit Lanes, multi-use path and new Interstate 75 overpass	NW 83 Street to NW 98 Street	1.3	\$15.5
Total Alachua County Transit and Roadway System				\$83.5
City of Gainesville Projects <i>(local funds identified as Cost Feasible by the Year 2020)</i>				
N/A	SE 4 Street- Phase 2 reconstruction	Williston Road to Depot Avenue	0.7	\$2.3
N/A	SW 62 Boulevard -four lanes plus two additional BRT lanes in the middle	Newberry Road to Archer Road	3.2	\$111.0
Total City of Gainesville Roadway System				\$113.3
Grand Total Combined Roadway Systems				\$265.7

BRT = Bus Rapid Transit
N/A = Not Applicable
SE = Southeast
SW = Southwest

Ft. = Fort
NW = Northwest
SR = State Road

^aMultimodal corridors are defined as major transportation facilities which accommodate automobile, truck, bus, bicycle and pedestrian travel and link different modes together, such as bikes on buses, car and walk and/or park and ride. These projects employ policies and design elements that ensure that the safety and convenience of all users of a transportation system are considered in all phases of project planning and development. Typical elements of a multimodal corridor include sidewalks, bicycle lanes (or wide, paved shoulders), shared-use bicycle and pedestrian paths, designated bus lanes, safe and accessible transit stops and frequent and safe crossings for pedestrians, including median islands, accessible pedestrian signals, and curb extensions. These projects do not include lane reductions.

^bWaldo Road Multiway Boulevard includes the reconstruction of the Waldo Road Corridor to support commercial and residential redevelopment and enhanced pedestrian crossings to the proposed Waldo Road Bus Rapid Transit line.

Note- Estimated costs are shown in Year 2010 dollars, except for the Strategic Intermodal System project that is shown in Year 2009 dollars.

Table C-3
Year 2035 Transit Cost Feasible Plan

Project Priority	Description	From / To	Length (Miles)	Estimated Cost in 2010 Dollars (Millions)
Transit (<i>Cost Feasible Plan Revenues = \$3.7 million</i>)				
T-1	Transit Maintenance Facility	NA	NA	\$50.0
Total				\$50.0
Surface Transportation Program (<i>Cost Feasible Plan Revenues = \$36.1 million</i>)				
F-1	Oaks Mall to Airport Bus Rapid Transit Alternatives Analysis	Oaks Mall to Airport (via Archer Road and Downtown)	NA	\$0.4
F-2	Santa Fe to Oaks Mall Bus Rapid Transit Feasibility Study and Alternatives Analysis	Santa Fe to Oaks Mall	NA	\$0.6
F-3	Streetcar Feasibility Study	Downtown to Butler Plaza via University of Florida	9.0 (One-way)	\$1.0
F-4	Intermodal Center/Park and Ride Lot	(location to be determined)	NA	\$1.4
F-5	Transit Maintenance Facility	NA	NA	\$50.0
Total				\$53.4

NA = Not Applicable

Table C-4
Year 2035 Cost Feasible Plan
Intelligent Transportation System Appendix

Project Priority	Project Name	Description	Estimated Cost (2010 Dollars)
1	<p><u>Interstate 75 Intelligent Transportation System Corridor</u></p> <p>Marion County line to Columbia County Line</p>	<p>A. Add Dynamic Message Signs to alert motorists of traffic conditions and travel times.</p> <p>B. Add pan-tilt-zoom traffic surveillance cameras for active traffic management of the freeway. This will allow operators at the Gainesville Traffic Management Center to alert motorists of existing conditions using the Dynamic Message Signs and the 511 information hotline.</p> <p>C. Add traffic detection technology so automated alerts can be sent to Gainesville Traffic Management Center operators when highway speeds drop below a certain threshold as well as for highway traffic studies and travel time collection.</p>	\$9,900,000
2	<p><u>Regional Transportation System Bus Priority System</u></p> <p>Adding signal priority to heavily used bus routes for University of Florida students will make those routes more reliable, thus resulting in higher passenger capacity and fewer vehicles on the road.</p>	<p>A. <u>Route #9</u> <u>State Road 24 (Archer Road)</u> from SW 23 Terrace to SW 23 Drive <u>State Road 331 (Williston Road)</u> from SW 25 Terrace to SW 23 Street</p> <p>B. <u>Route # 20</u> <u>State Road 121 (SW 34 Street)</u> from Hull Road to SW 20 Avenue</p> <p>C. <u>Route# 21</u> <u>State Road 121 (SW 34 Street)</u> from Hull Road to SW 20 Avenue</p> <p>D. <u>Route #35</u> <u>State Road 24 (Archer Road)</u> from SW 23 Terrace to State Road 226 (SW 2 Avenue) <u>State Road 226 (SW 16 Avenue)</u> from State Road 24 (Archer Road) to Shealy Drive <u>State Road 12 (SW 34th Street)</u> from SW 35 Place to State Road 226 (SW 16 Avenue) <u>State Road 226 (SW 16 Avenue)</u> from State Road 121 (SW 34 Street) to SW 23 Street</p>	\$600,000

Table C-4 (Continued)
Year 2035 Cost Feasible Plan
Intelligent Transportation System Appendix

Project Priority	Project Name	Description	Estimated Cost (2010 Dollars)
3	<p><u>Dynamic Message Signs on State Highway Arterials</u></p> <p>Dynamic message on the arterials will alert drivers of existing traffic conditions, alternate routes, detour routes in the event Interstate 75 is shut down, and travel times.</p>	<p>A. State Road 121 (SW 34 Street) @ SW 20 Avenue (Southbound)</p> <p>B. State Road 121 (SW 34 Street) @ State Road 331 (Eastbound)</p> <p>C. State Road 25 (W 13 Street) @ State Road 26 (W University Avenue)</p> <p>D. State Road 25 (NW 13 Street) @ State Road 222 (NW 39 Avenue) (Westbound)</p> <p>E. State Road 25 (NW 13 Street) @ State Road 222 (NW 39 Avenue) (Northbound)</p> <p>F. State Road 222 (NW 39 Avenue) @ State Road 93 (Eastbound)</p>	\$700,000
4	<p><u>Expand Automated Arterial Travel Time System</u></p> <p>Expanding the Arterial Travel Time System will provide motorists with more real time information via Google maps or Dynamic Message Signs for actual travel times to various spots in the urban area. Motorists may be able to make a different route choice based on the information they receive. The travel times can also be used for traffic studies to measure development related impacts.</p>	<p>A. <u>State Road 25 (NW 13 Avenue)</u> State Road 222 (NW 39 Avenue) to State Road 331 (Williston Road)</p> <p>B. <u>State Road 121 (SW 34 Street)</u> NW 16 Avenue to State Road 93 (Interstate 75) Southbound Ramp</p>	\$600,000

Table C-4 (Continued)
Year 2035 Cost Feasible Plan
Intelligent Transportation System Appendix

Project Priority	Project Name	Description	Estimated Cost (2010 Dollars)
5	<u>Travel Demand Management</u> Information technologies project that addresses travel demand strategies, such as HOV lanes, HOT lanes and other travel demand management technologies.	Gainesville Metropolitan Areawide	(to be determined)
Grand Total Intelligent Transportation System Projects			\$11,800,000

HOV = High Occupancy Vehicle
NA = Not Applicable
SW = Southwest

HOT = High Occupancy Toll
NW = Northwest

Table C-5
Year 2035 Long Range Transportation Plan
Existing Plus Committed Capacity Projects Appendix

Facility/Location	Type	Fiscal Year	Source
I-75 at SR 26 (W Newberry Road) (SE quadrant of interchange only)	Interchange Modification/Operational Improvement	2011	FDOT WP
SE 4 Street from Williston Road to Depot Avenue- Phase 1	Reconstruction- Design & Right-of-Way	2014	MTPO - TIP
SW 8 Avenue to SW 20 Avenue: Connection of SW 8 Avenue to SW 61 Street	New Road Connection - SW 8 Ave to SW 61 St	2012	MTPO - TIP
SW 8 Ave from SW 122 Street to SW 143 Street- Phase 1	New Roadways/2 lane reconstruction	2015	Alachua County CIP
SR 121 (NW 34 Street/NW 22 Street) from NW 58 Avenue to NW 67 Place	4-laning	2015	City of Gainesville
SR 226 (SE 16 Avenue) from Main Street to Williston Road	4-laning- Preliminary Engineering	2013	MTPO - TIP
SR 329 (Main Street) from Depot Avenue to NW 8 Avenue	Road Diet - Resurface/Reduce from 4 lanes to 2 lanes with center turn lane	under construction	FDOT WP
SR 329 (Main Street) from NW 8 Ave to NW 16 Avenue	Road Diet - Resurface/Reduce from 4 lanes to 2 lanes with center turn lane	under construction	Alachua County budget
SW 40 Boulevard Extension to SW 47 Avenue	New 2-lane roadway	2014	City of Gainesville CIP
Depot Avenue from US 441/SR 25/SW 13 Street to Williston Road	Reconstruction	2012	FDOT WP; City of Gainesville CIP

Table C-5 (Continued)
Year 2035 Long Range Transportation Plan
Existing Plus Committed Capacity Projects Appendix

Facility/Location	Type	Fiscal Year	Source
SW 6 Street from SW 4 Avenue to University Avenue	Reconstruction	2012	City of Gainesville CIP

NW = Northwest

SR = State Road

TIP = Transportation Improvement Program

WP = Work Program

FDOT = Florida Department of Transportation

MTPO = Metropolitan Transportation Organization for the Gainesville Urbanized Areas

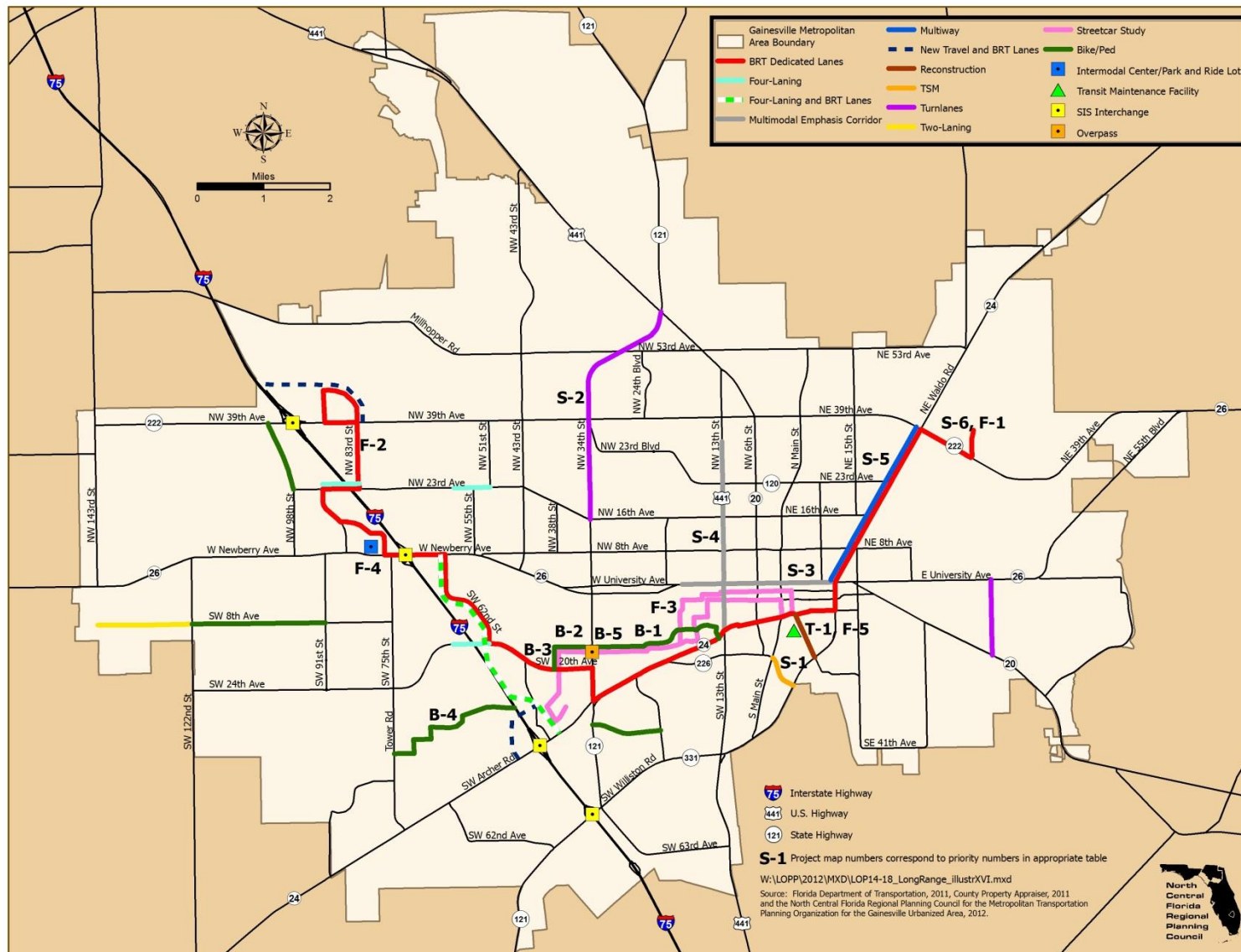
SE = Southeast

SW = Southwest

US = United States

CIP = Capital Improvements Program

Illustration XVI
Year 2035 Long Range Transportation Plan Cost Feasible Priority Ranking of Projects
Adopted October 27, 2010



THIS PAGE LEFT BLANK INTENTIONALLY

Appendix D

Regional Transit System

Supplemental Information

THIS PAGE LEFT BLANK INTENTIONALLY

Appendix D: Regional Transit System Supplemental Information

Table D-1 provides supplemental project descriptions from the Regional Transit System Transit Development Plan for project priorities No. 4 and No. 5 of Table 6 of the List of Priority projects. This supplemental information is provided at the request of the Regional Transit System.

THIS PAGE LEFT BLANK INTENTIONALLY

Table D-1
Fiscal Years 2012-13 to 2016-17
Public Transportation Priorities Supplemental Information
Priority 4 and 5 Projects

Project	Location	Description
Priority 4 New Transit Routes		
Enhance bus service via Fort Clarke Boulevard	RTS Route 23	Implement new route to provide service from the Oaks Mall to SFC
Enhance bus service from Urban Core to Airport Area	RTS Route 25	Implement new route to provide service from the University of Florida to the Airport Area
Enhance bus service via W 62 Boulevard and N 23 Avenue	RTS Route 62	Implement new route to provide service from Oaks Mall to Butler Plaza
Enhance bus service within Urban Core	RTS Route 46	Implement new circulator route to provide service between downtown and the University of Florida
Enhance bus service via N 39 Avenue	RTS Route 39	Implement new route to provide service from Spring Hill Development to Gainesville Regional Airport
Enhance bus service for southwest and northwest areas	RTS Route 44	Implement new route to provide service from Shands to Hunters Crossing
Priority 5 Existing Route Service Enhancements		
Enhance bus service via N 23 Avenue	RTS Route 10	Increase fixed-route service to 40 minutes
Enhance bus service via W 43 Street	RTS Route 43	Increase fixed-route service to 30 minutes
Enhance bus service via Archer Road	RTS Routes 1, 8 & 11	Extend fixed-route hours to 11:00 pm
Enhance bus service for southeast and northwest areas	RTS Routes 6 & 11	Increase fixed-route service to 30 minutes
Enhance bus service for southeast and northeast areas	RTS Routes 2 & 24	Increase fixed-route service to 30 minutes
Enhance Saturday service	RTS Routes 14, 75, 400, 402, 403, 404, 405, 406, 409 & 410	Extend fixed-route service to 7:58 pm
Enhance bus service via Archer Road and Tower Road	RTS Route 75	Increase fixed-route service to 35 minutes; extend Saturday fixed-route service to 7:58 pm; add Sunday fixed-route service; and increase weekend fixed-route service to 45 minutes
Enhance bus service for southeast area	RTS Route 7	Increase fixed-route service to 30 minutes
Enhance Sunday service	RTS Route 410	Add Sunday fixed-route service

N = North
SFC = Santa Fe College

RTS = Regional Transit System
W = West

THIS PAGE LEFT BLANK INTENTIONALLY

Appendix E Safety Project Supplemental Material

THIS PAGE LEFT BLANK INTENTIONALLY

Appendix E: Safety Projects Supplemental Material

There is not any Safety Project Supplemental Material in Year 2012.

THIS PAGE LEFT BLANK INTENTIONALLY

Appendix F

Federal Funds Obligation

Project List

Fiscal Year 2010-11

(10/1/10 to 9/30/11)

THIS PAGE LEFT BLANK INTENTIONALLY

Appendix F: Federal Funds Obligation Project List, Fiscal Year 2010-11 (10/1/10 to (9/30/11)

The Federal Funds Obligation Project List is included in this List of Priority Projects document at the request of the Florida Department of Transportation.

THIS PAGE LEFT BLANK INTENTIONALLY

10/04/11 09.48.52

PAGE: 1

FLORIDA DEPARTMENT OF TRANSPORTATION

=====

FEDERAL OBLIGATIONS REPORT
INPUT SELECTION

FEDERAL FISCAL YEAR = 2011 (10/01/2010 - 09/30/2011)

SORT = S (BY ITEM)

DISTRICT/COUNTY/STATEWIDE = GAINESVILLE MPO

Metropolitan Transportation Planning Organization for the Gainesville Urbanized Area
List of Priority Projects Fiscal Years 2013-14 to 2017-18

10/04/11
09.48.52
GAINESVILLE MTPO

FLORIDA DEPARTMENT OF TRANSPORTATION
FEDERAL OBLIGATIONS - PROJECT DETAIL
FFY 2011 (10/01/2010 - 09/30/2011)

PAGE 1
FPMOBL10 (A)

HIGHWAYS

ITEM NO	DESCRIPTION	OLD ITEM							
COUNTY	RDWY ID	PROJ LGTH	FAC	TYPE OF WORK	EXIST/IMPROVE/ADD (LANES)	FUND	PRELIMINARY ENGINEERING	RIGHT-OF-WAY	RAILROADS & UTILITIES
2076693	SR 24 (ARCHER RD)								
FROM SW 75TH ST TO SW 43RD									
ALACHUA				RESURFACING					
26090000	2.502 MI		2	2	0				
3761 038 P					SL		0	0	0
									2,315,162
2077564	SR 200 (US 301)								
FROM NE 76TH PLACE TO SR 24									
ALACHUA				RESURFACING					
26060000	5.965 MI		2	2	0				
ARRA 637 B					FSF1		0	0	0
					SA		0	0	-103
							0	0	218,954
							0	0	218,851
2113632	W.6TH ST. RAIL CORR.								
FR: SW 2ND AVE. TO NW 10TH AVE									
ALACHUA				BIKE PATH/TRAIL					
26000001	.792 MI		2	0	0				
8887 724 A					EB		0	0	0
					SE		0	0	200
							0	0	665,000
							0	0	665,200
2113653	SW 62ND BLVD.								
4-LANE ARTERIAL CONNECTOR									
ALACHUA				PRELIMINARY ENGINEERING					
26000094	1.516 MI		4	0	0				
S124 002 R					EB		4,291	0	0
									0
2113655	SW 62ND BLVD.								
4 LANE ARTERIAL CONNECTOR									
ALACHUA				TRAFFIC OPS IMPROVEMENT					
26000094	1.516 MI		4	0	0				
SFT2 247 R					EB		0	0	0
S117 003 R					EB		0	0	25,000
					SA		0	0	7,931
							0	0	500
							0	0	33,431
4046281	OLD GAINESVILLE DEPOT								
REHABILITATION									
ALACHUA				MISCELLANEOUS CONSTRUCTION					
26000000	99.000 MI		0	0	0				
4220 020 C					EB		0	0	0
									3,835

Metropolitan Transportation Planning Organization for the Gainesville Urbanized Area
List of Priority Projects Fiscal Years 2013-14 to 2017-18

10/04/11
09.48.52
GAINESVILLE MTP0

FLORIDA DEPARTMENT OF TRANSPORTATION
FEDERAL OBLIGATIONS - PROJECT DETAIL
FFY 2011 (10/01/2010 - 09/30/2011)

PAGE 2
FPMOBL10 (A)

HIGHWAYS

ITEM NO	DESCRIPTION	OLD ITEM							
COUNTY	RDWY ID	PROJ LGTH	TYPE OF WORK	EXIST/IMPROVE/ADD (LANES)	PRELIMINARY	RIGHT-OF-WAY	RAILROADS &	CONSTRUCTION	GRANTS &
FEDERAL AID NUMBER	FAC	AUTH DATE	FUND		ENGINEERING		UTILITIES		MISC.
4205371	DEPOT AVE/SW 9TH RD.								
	FROM US 441/SW 13TH ST TO SR 331/WILLISTON RD								
ALACHUA									
26090500	1.746 MI	2	2	0					
SFTL 238 R				EB	500	0	0	0	0
4205372	DEPOT AVE/SW 9TH AVE								
	FROM MAIN STREET TO SE 7TH STREET								
ALACHUA									
26090500	.443 MI	2	2	0					
SFT2 238 R				SA	0	0	0	500	0
4205411	NE 19 ST/NE 19 TERR								
	FROM NE 3RD AVE. TO NE 8TH AVE.								
ALACHUA									
26000058	.405 MI	2	2	2					
SFT2 289 R				EB	0	0	0	2,640	0
4205412	NE 25TH ST&NE 19 DR.								
	FROM SR 26/UNIVERSITY BVD TO NE 8TH AVE.								
ALACHUA									
26000032	.500 MI	2	2	0					
SFT2 290 R				EB	0	0	0	5,016	0
				SA	0	0	0	500	0
	** ITEM TOTALS **				0	0	0	5,516	0
4230281	SR 200 (US 301)								
	CSX RAILROAD OVERPASS								
ALACHUA									
26130000	1.898 MI	2	2	0					
3114 030 P				ACEN	0	0	0	281,476	0
				EBNH	0	0	0	48,735	0
	** ITEM TOTALS **				0	0	0	330,211	0
4233971	SR 235								
	FROM NW CR 241 TO BRADFORD C/L								
ALACHUA									
26110000	12.699 MI	2	2	0					
2823 008 U				SL	0	0	0	5,665,875	0

Metropolitan Transportation Planning Organization for the Gainesville Urbanized Area
List of Priority Projects Fiscal Years 2013-14 to 2017-18

10/04/11
09.48.52
GAINESVILLE MTP0

FLORIDA DEPARTMENT OF TRANSPORTATION
FEDERAL OBLIGATIONS - PROJECT DETAIL
FFY 2011 (10/01/2010 - 09/30/2011)

PAGE 3
FPMOBL10 (A)

HIGHWAYS

ITEM NO	DESCRIPTION	OLD ITEM								
COUNTY	RDWY ID	PROJ LGTH	FAC	TYPE OF WORK	EXIST/IMPROVE/ADD (LANES)	PRELIMINARY	RIGHT-OF-WAY	RAILROADS & UTILITIES	CONSTRUCTION	GRANTS & MISC.
	FEDERAL AID NUMBER									
4236082	SR 226 (SE 16TH AVE)									
	AT MAIN ST AT SR 331 (WILLISTON RD)									
ALACHUA				INTERSECTION IMPROVEMENT						
26004000	.550 MI	2	2	0						
8887 725 A				SA		419,311	0	0	0	0
4246321	I-75 (SR 93) FRONTAGE									
	ROAD FROM US 441 TO 1.5 MILES NORTH									
ALACHUA				RESURFACING						
26260058	1.550 MI	2	2	0						
0752 144 I				IMAC		30,587	0	0	0	0
0752 145 I				IM		0	0	0	1,587,827	0
				** ITEM TOTALS **		30,587	0	0	1,587,827	0
4246851	I-75 (SR 93)									
	@ US 441 OPERATIONAL IMPROVEMENTS									
ALACHUA				INTERCHANGE IMPROVEMENT						
26260000	.167 MI	0	0	0						
0752 147 I				SA		32,353	0	0	0	0
4252801	SR 26/ORANGE HEIGHTS									
	-REBUILD RAILROAD CROSSING #624994-U									
ALACHUA				RAILROAD CROSSING						
26130000	.200 MI	2	0	0						
4121 012 P				EB		0	0	200,000	0	0
4269821	I-75 (93) RAMP ACCESS									
	RD FROM 39TH AVE. TO END OF ROADWAY									
ALACHUA				RESURFACING						
26260048	.682 MI	2	2	0						
8887 726 A				ACIM		13,581	0	0	0	0
4273271	NE 19TH PL									
	FROM NE 9TH ST TO NE 15TH ST									
ALACHUA				SIDEWALK						
	.000	0	0	0						
SRTS 170 A				SL		6,000	0	0	0	0
				SR2E		74,346	0	0	0	0
				** ITEM TOTALS **		80,346	0	0	0	0

Metropolitan Transportation Planning Organization for the Gainesville Urbanized Area
List of Priority Projects Fiscal Years 2013-14 to 2017-18

10/04/11
09.48.52
GAINESVILLE MTPO

FLORIDA DEPARTMENT OF TRANSPORTATION
FEDERAL OBLIGATIONS - PROJECT DETAIL
FFY 2011 (10/01/2010 - 09/30/2011)

PAGE 4
FPMOBL10 (A)

HIGHWAYS

ITEM NO	DESCRIPTION	OLD ITEM							
COUNTY	TYPE OF WORK								
RDWY ID PROJ LGTH	EXIST/IMPROVE/ADD (LANES)								
FEDERAL AID NUMBER FAC	AUTH DATE FUND								
4273781 SR 45/ARCHER									
INSTALL LED LIGHTS RR X-ING#622512-K									
ALACHUA	RAIL SAFETY PROJECT								
26030000 .200 MI	2 0 0								
00S2 048 J	RHP								
			0	0	34,084	0	0		
4288931 SR 24/SW ARCHER RD									
SW 169TH DR/BOYKIN AVE TO SW 73RD CT/MACDOWELL									
ALACHUA	SIDEWALK								
26090000 .505 MI	2 0 0								
3231 023 P	SE		86,256	0	0	0	0		
4288941 NEWBERRY BIKE/PED									
VARIOUS TRAIL CONNECTIONS TO TRAILHEADS & SCHOOLS									
ALACHUA	BIKE LANE/SIDEWALK								
.000	0 0 0								
8887 929 A	EB		7,500	0	0	0	0		
	SE		175,000	0	0	0	0		
	** ITEM TOTALS **		182,500	0	0	0	0		
4290291 ARCHER BRAID TRAIL									
FROM: SR 24/ARCHER RD TO: KANAPAHA PARK									
ALACHUA	BIKE PATH/TRAIL								
26544000 3.457 MI	2 0 0								
3761 040 P	EB		500	0	0	0	0		
	SE		150,000	0	0	0	0		
	** ITEM TOTALS **		150,500	0	0	0	0		
4300621 SW 30TH AVENUE									
RAIL CROSSING OVER FLORIDA NORTHERN RR									
ALACHUA	RAILROAD CROSSING								
26000000 .001 MI	0 0 0								
8887 930 A	SN		0	0	325,000	0	0		
HIGHWAYS TOTALS:			12,388,357	1,000,225	0	559,084	10,829,048	0	

Metropolitan Transportation Planning Organization for the Gainesville Urbanized Area
List of Priority Projects Fiscal Years 2013-14 to 2017-18

10/04/11
09.48.52
GAINESVILLE MTPO

FLORIDA DEPARTMENT OF TRANSPORTATION
FEDERAL OBLIGATIONS - PROJECT DETAIL
FFY 2011 (10/01/2010 - 09/30/2011)
TRANSPORTATION PLANNING

PAGE 5
FPMOBL10 (A)

ITEM NO	DESCRIPTION	OLD ITEM							
COUNTY	RDWY ID	PROJ LGTH	FAC	EXIST/IMPROVE/ADD (LANES)	PRELIMINARY ENGINEERING	RIGHT-OF-WAY	RAILROADS & UTILITIES	CONSTRUCTION	GRANTS & MISC.
2140949	GAINESVILLE UPWP/PL								
	FY 2010/2011 & 2011/2012								
ALACHUA				TRANSPORTATION PLANNING					
	.000	0	0	0					
0241 048 M				PL	556,643	0	0	0	0
PLANNING TOTALS:					556,643	556,643	0	0	0
GRAND TOTALS:					12,945,000	1,556,868	0	559,084	10,829,048

Metropolitan Transportation Planning Organization for the Gainesville Urbanized Area
List of Priority Projects Fiscal Years 2013-14 to 2017-18

10/04/11
09.48.52
GAINESVILLE MTP0

FLORIDA DEPARTMENT OF TRANSPORTATION
FEDERAL OBLIGATIONS - SYSTEM SUMMARY
FFY 2011 (10/01/2010 - 09/30/2011)

PAGE 1
FPMOBL10(B)

HIGHWAYS

WORK PROGRAM FUND	TOTAL	ENGINEERING	RIGHT-OF-WAY	UTILITIES	CONSTRUCTION	MISC.
ACEN - ADVANCE CONSTRUCTION (EBNH)	281,476	0	0	0	281,476	0
ACIM - ADVANCE CONSTRUCTION (IM)	13,581	13,581	0	0	0	0
EB - EQUITY BONUS	257,413	12,791	0	200,000	44,622	0
EBNH - EQUITY BONUS SUPPLEMENTING NH	48,735	0	0	0	48,735	0
FSP1 - FED STIMULUS, S/W MANAGED	-103	0	0	0	-103	0
IM - INTERSTATE MAINTENANCE	1,587,827	0	0	0	1,587,827	0
IMAC - IM (AC/REGULAR)	30,587	30,587	0	0	0	0
RHP - RAIL HIGHWAY X-INGS - PROT DEV	34,084	0	0	34,084	0	0
SA - STP, ANY AREA	672,118	451,664	0	0	220,454	0
SE - STP, ENHANCEMENT	1,076,256	411,256	0	0	665,000	0
SL - STP, AREAS <= 200K	7,987,037	6,000	0	0	7,981,037	0
SN - STP, MANDATORY NON-URBAN	325,000	0	0	325,000	0	0
SR2E - SAFE ROUTES - EITHER	74,346	74,346	0	0	0	0
HIGHWAYS TOTALS:	12,388,357	1,000,225	0	559,084	10,829,048	0

Metropolitan Transportation Planning Organization for the Gainesville Urbanized Area
List of Priority Projects Fiscal Years 2013-14 to 2017-18

10/04/11
09.48.52
GAINESVILLE MTPO

FLORIDA DEPARTMENT OF TRANSPORTATION
FEDERAL OBLIGATIONS - SYSTEM SUMMARY
FFY 2011 (10/01/2010 - 09/30/2011)
=====

PAGE 2
FPMOBL10 (B)

*****TRANSPORTATION PLANNING*****

WORK PROGRAM FUND	TOTAL	ENGINEERING	RIGHT-OF-WAY	UTILITIES	CONSTRUCTION	MISC.
PL - METRO PLAN (85% FA; 15% OTHER)	556,643	556,643	0	0	0	0
PLANNING TOTALS:	556,643	556,643	0	0	0	0
=====						
GRAND TOTALS:	12,945,000	1,556,868	0	559,084	10,829,048	0
=====						

Metropolitan Transportation Planning Organization for the Gainesville Urbanized Area
List of Priority Projects Fiscal Years 2013-14 to 2017-18

10/04/11
09.48.52
GAINESVILLE MTP0

FLORIDA DEPARTMENT OF TRANSPORTATION
FEDERAL OBLIGATIONS - OVERALL SUMMARY
FFY 2011 (10/01/2010 - 09/30/2011)

PAGE 1
FPMOBL10(C)

WORK PROGRAM FUND	TOTAL	ENGINEERING	RIGHT-OF-WAY	UTILITIES	CONSTRUCTION	MISC.
ACEN - ADVANCE CONSTRUCTION (EBNH)	281,476	0	0	0	281,476	0
ACIM - ADVANCE CONSTRUCTION (IM)	13,581	13,581	0	0	0	0
EB - EQUITY BONUS	257,413	12,791	0	200,000	44,622	0
EBNH - EQUITY BONUS SUPPLEMENTING NH	48,735	0	0	0	48,735	0
FSF1 - FED STIMULUS, S/W MANAGED	-103	0	0	0	-103	0
IM - INTERSTATE MAINTENANCE	1,587,827	0	0	0	1,587,827	0
IMAC - IM (AC/REGULAR)	30,587	30,587	0	0	0	0
PL - METRO PLAN (85% FA; 15% OTHER)	556,643	556,643	0	0	0	0
RHP - RAIL HIGHWAY X-INGS - PROT DEV	34,084	0	0	34,084	0	0
SA - STP, ANY AREA	672,118	451,664	0	0	220,454	0
SE - STP, ENHANCEMENT	1,076,256	411,256	0	0	665,000	0
SL - STP, AREAS <= 200K	7,987,037	6,000	0	0	7,981,037	0
SN - STP, MANDATORY NON-URBAN	325,000	0	0	325,000	0	0
SR2E - SAFE ROUTES - EITHER	74,346	74,346	0	0	0	0
=====	=====	=====	=====	=====	=====	=====
GRAND TOTALS:	12,945,000	1,556,868	0	559,084	10,829,048	0
=====	=====	=====	=====	=====	=====	=====

THIS PAGE LEFT BLANK INTENTIONALLY

Appendix G

Supplemental Surface

Transportation Program Fund-

Eligible Projects

THIS PAGE LEFT BLANK INTENTIONALLY

Appendix G: Supplemental Surface Transportation Program Fund- Eligible Projects

Table G-1
Alachua County and City of Gainesville
Nonprioritized Surface Transportation Program
Fund-Eligible Projects

Project	Location	Description
Archer Road	FM: SW 91 Street TO: SW 75 Street	Reconstruct as a 4-lane divided facility
County Road 225	AT: NE 53 Avenue	Reconstruct intersection and signalize
Lake Shore Drive / County Road 329B	FM: Hawthorne Road TO: State Road 26	Mill and resurface; add paved shoulders and turnbays
North Main Street	FM: N 39 Avenue TO: N 53 Avenue	Mill and resurface
NE 8 Avenue	FM: N Main Street TO: NE Boulevard	Mill and resurface
Rocky Point Road	FM: Williston Road TO: SW 13 Street	Reconstruct with wider lanes, paved shoulders, turnbays; mill and resurface existing pavement
SE 4 Street	FM: Williston Road TO: Depot Avenue	Mill and resurface
SE 16 Avenue	FM: Main Street TO: Williston Road	Reconstruct as a 4-lane divided facility
State Roads 26/26A	FM: NW 38 Street TO: Gale Lemerand Drive	Implement one-way pair configuration
SW 8 Avenue	FM: SW 122 Street TO: Tower Road	Resurface/reconstruct; add paved shoulders and sidewalk on one side
SW 20 Avenue	AT: SW 34 Street	Construct grade-separated crossing
SW 35 Place	FM: SW 34 Street TO: SW 23 Terrace	Mill and resurface
SW 62 Boulevard	FM: SW 20 Avenue TO: Newberry Road	Mill and resurface
SW 91 Street	FM: SW 24 Avenue TO: Newberry Road	Mill and resurface; add paved shoulders

FM = From
NE = Northeast
SW = Southwest

N = North
SE = Southeast

THIS PAGE LEFT BLANK INTENTIONALLY

Metropolitan Transportation Planning Organization for the Gainesville Urbanized Area

List of Priority Projects Team

Scott R. Koons, AICP, Executive Director

- * Marlie Sanderson, AICP, Director of Transportation Planning
- ** Steven Dopp, Senior Planner
- ** Michael Escalante, AICP, Senior Planner
- ** Michael DePalma, Associate Planner
- ** Kevin Parrish, Information Technology and Property Management Director
- ** Carol Laine, Executive Assistant to the Executive Director

- * Primary Responsibility
- ** Secondary Responsibility

Metropolitan Transportation Planning Organization for the Gainesville Urbanized Area

2009 NW 67th Place
Gainesville, FL 32653-1603
352.955.2200

www.ncfrpc.org/mtpo