



Southwest 62nd Boulevard Connector

SR 24 (Archer Road) to SR 26 (Newberry Road)

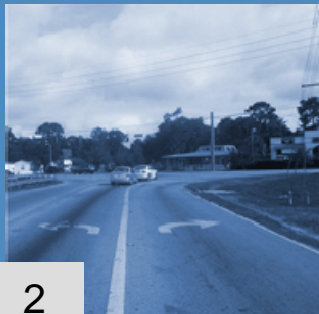




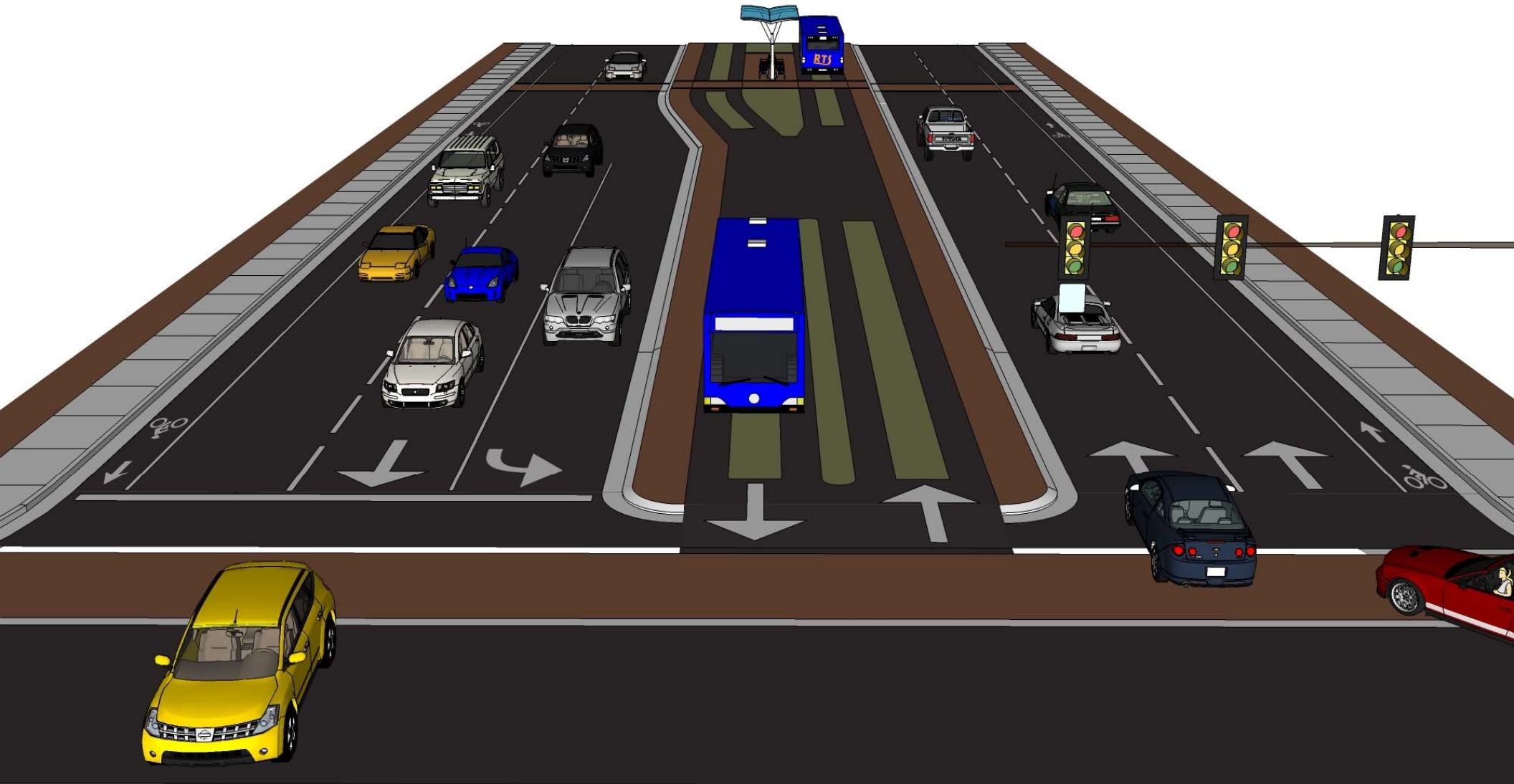
Purpose

November 13, 2008 Meeting

- **Approved Corridor Four four-lane alignment**
- **Requested demonstration of the implementation of Bus Rapid Transit (BRT) in the median**



Modified Alignment for BRT



Modified Alignment

Archer Road to Windmeadows Blvd (No change)

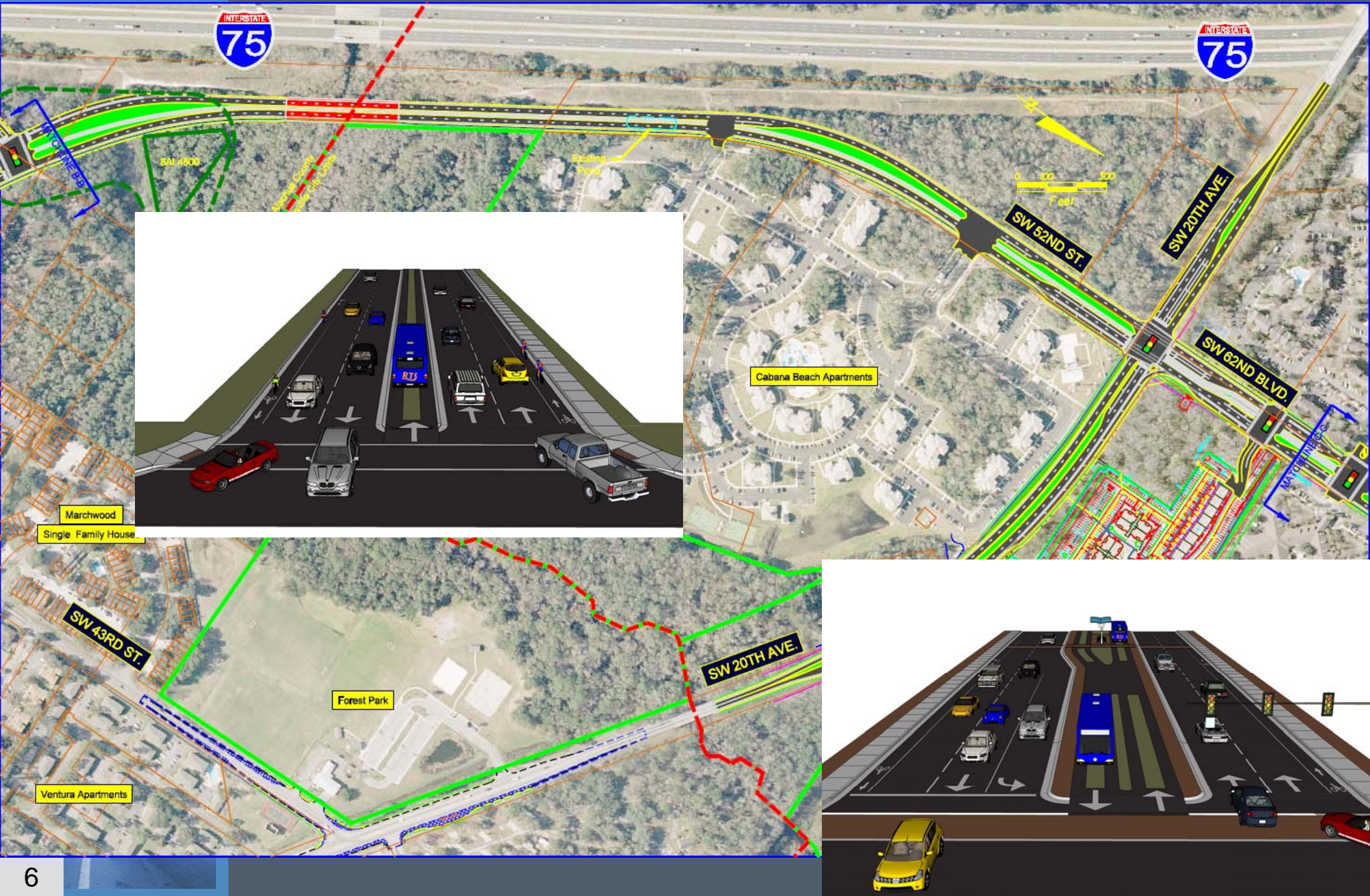


Modified Alignment (40-ft Median) Windmeadows Boulevard to Southwest 40th Boulevard

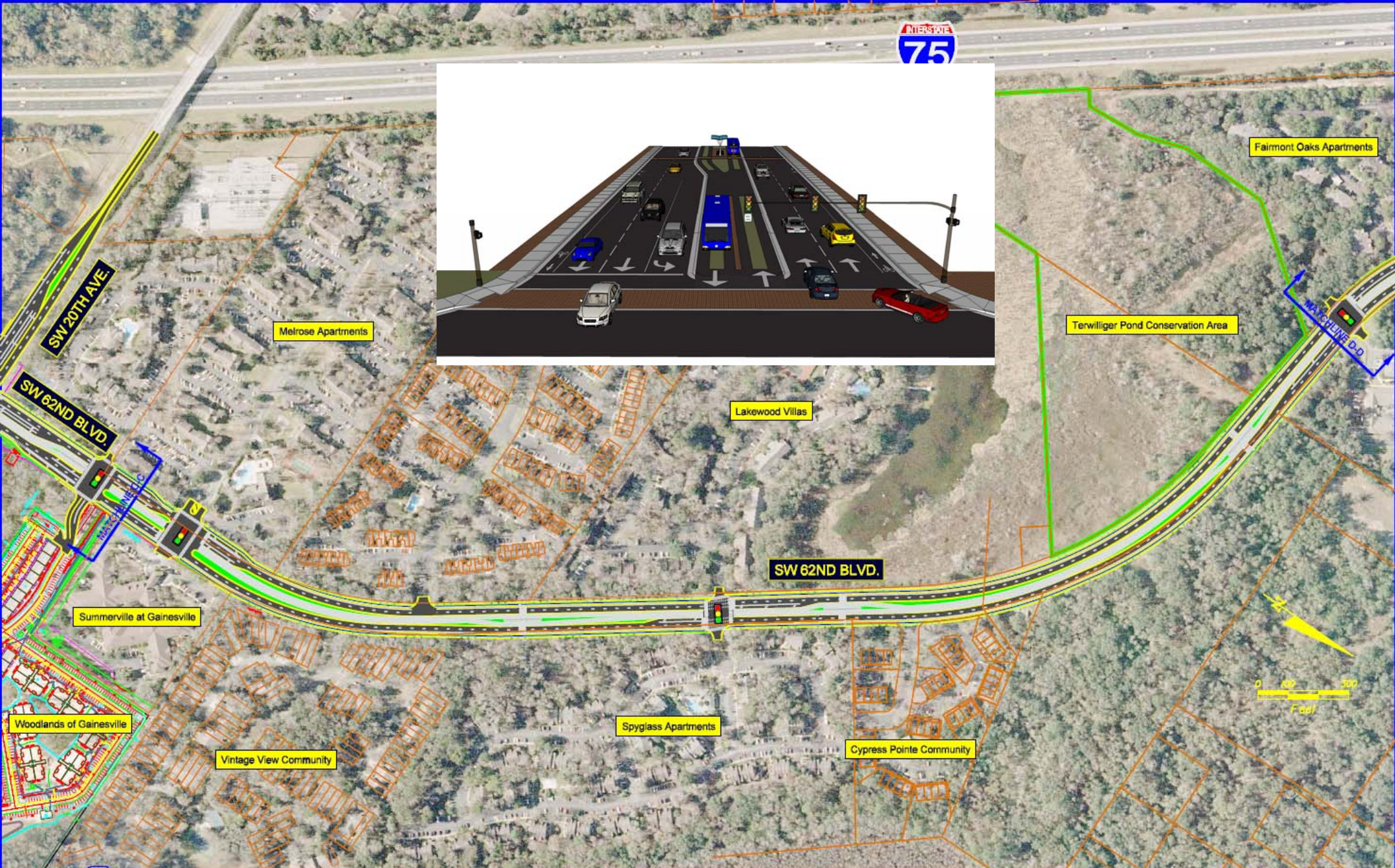


Modified Alignment (Minimum)

Southwest 40th Boulevard to Southwest 20th Avenue



Modified Alignment (26-ft Median for BRT) Southwest 20th Avenue to Southwest 1st Place



Modified Alignment (No Change North of 1st)

Southwest 1st Place to Newberry Road

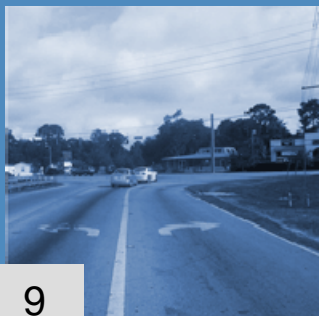




Comparison



Evaluation Factor	Original Cross Section (22-ft Median)	Modified Cross Section (without BRT)	Modified Cross Section (with BRT)
Total Costs	\$86,628,077	\$89,628,077	\$98,868,190
Area Required (acres)	44.25	51.79	51.79
Wetlands Functional Loss	3.90	5.38	5.38
Floodplains (acre-ft)	11.93	12.22	12.22





Next Steps





Next Steps

- **Preliminary Engineering Report**
 - March 2009
- **Environmental Assessment**
 - March 2009
- **Public Hearing**
 - April 2009
- **FHWA Approval**
 - July 2009





Next Steps

