

**HNTB**



# Southwest 62<sup>nd</sup> Boulevard Connector Interim Projects

SR 24 (Archer Road) to SR 26 (Newberry Road)





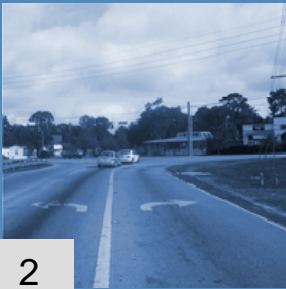
## Purpose/Recommendation

### ■ Recommendation

- Approve the 60% design plans as proposed and direct staff to proceed with the development of the 90% plans.

### ■ Interim Projects

- Southwest 40<sup>th</sup> Boulevard at Archer Road
- Southwest 20<sup>th</sup> Avenue at Southwest 43<sup>rd</sup> Street
- Smart Bus Bay

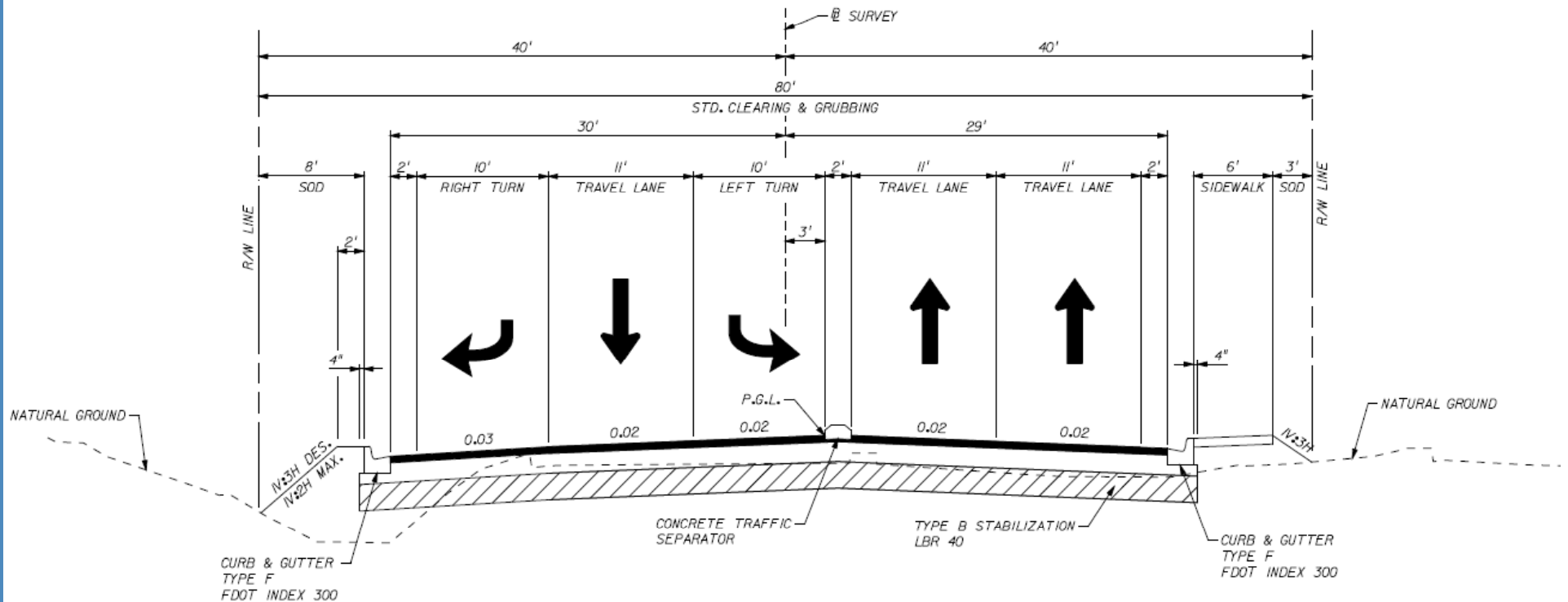




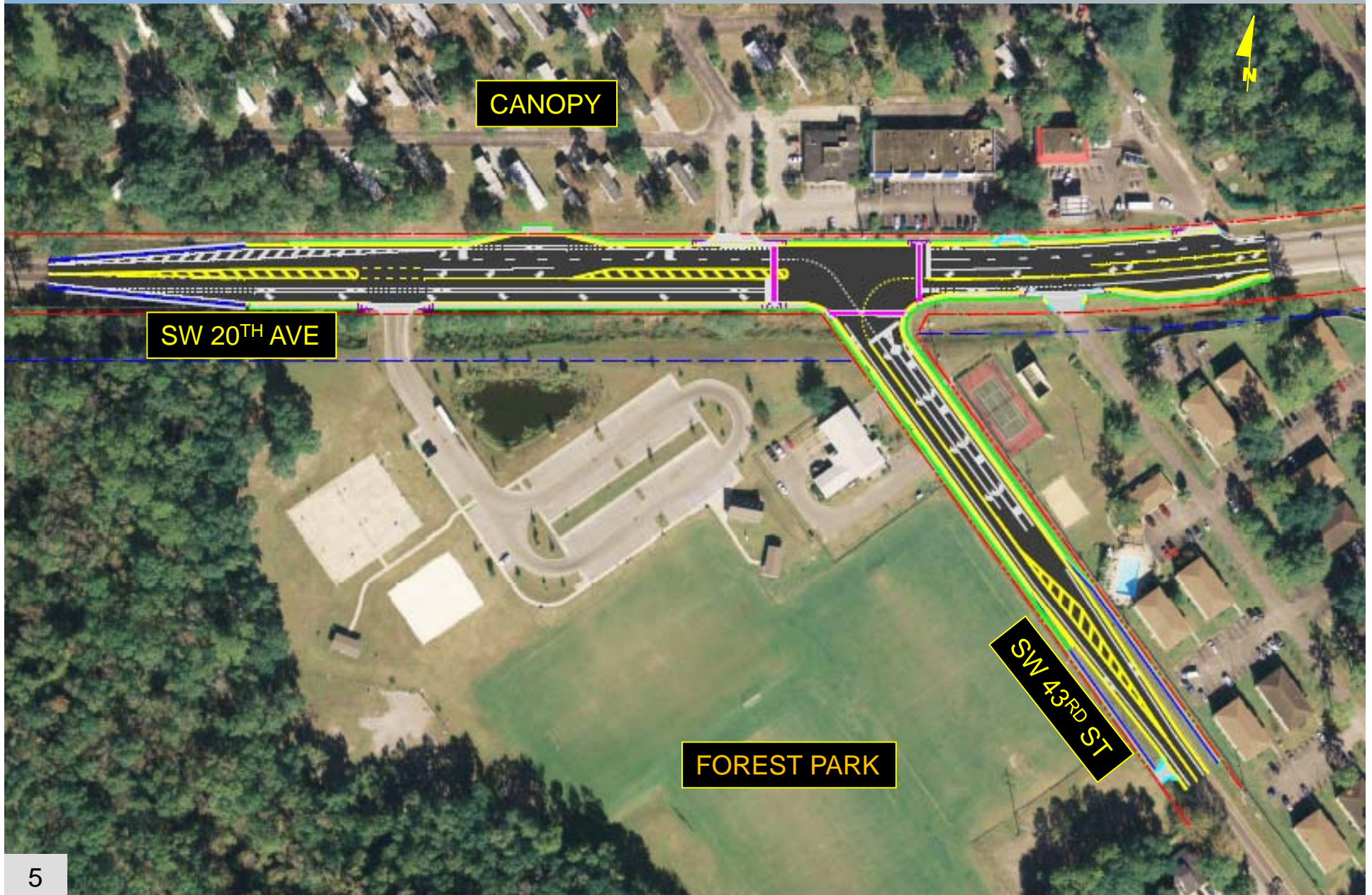
3



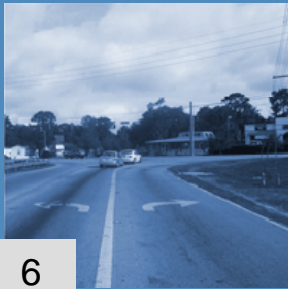
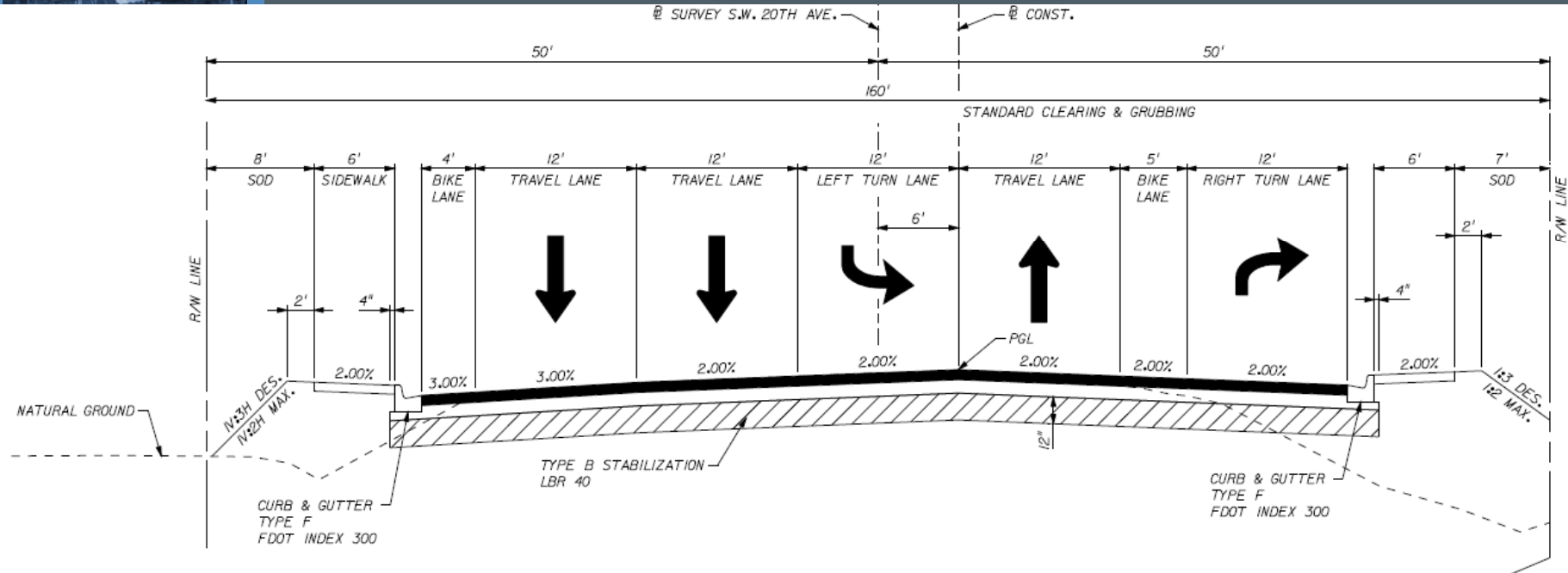
# Typical Section – SW 40<sup>th</sup> Blvd







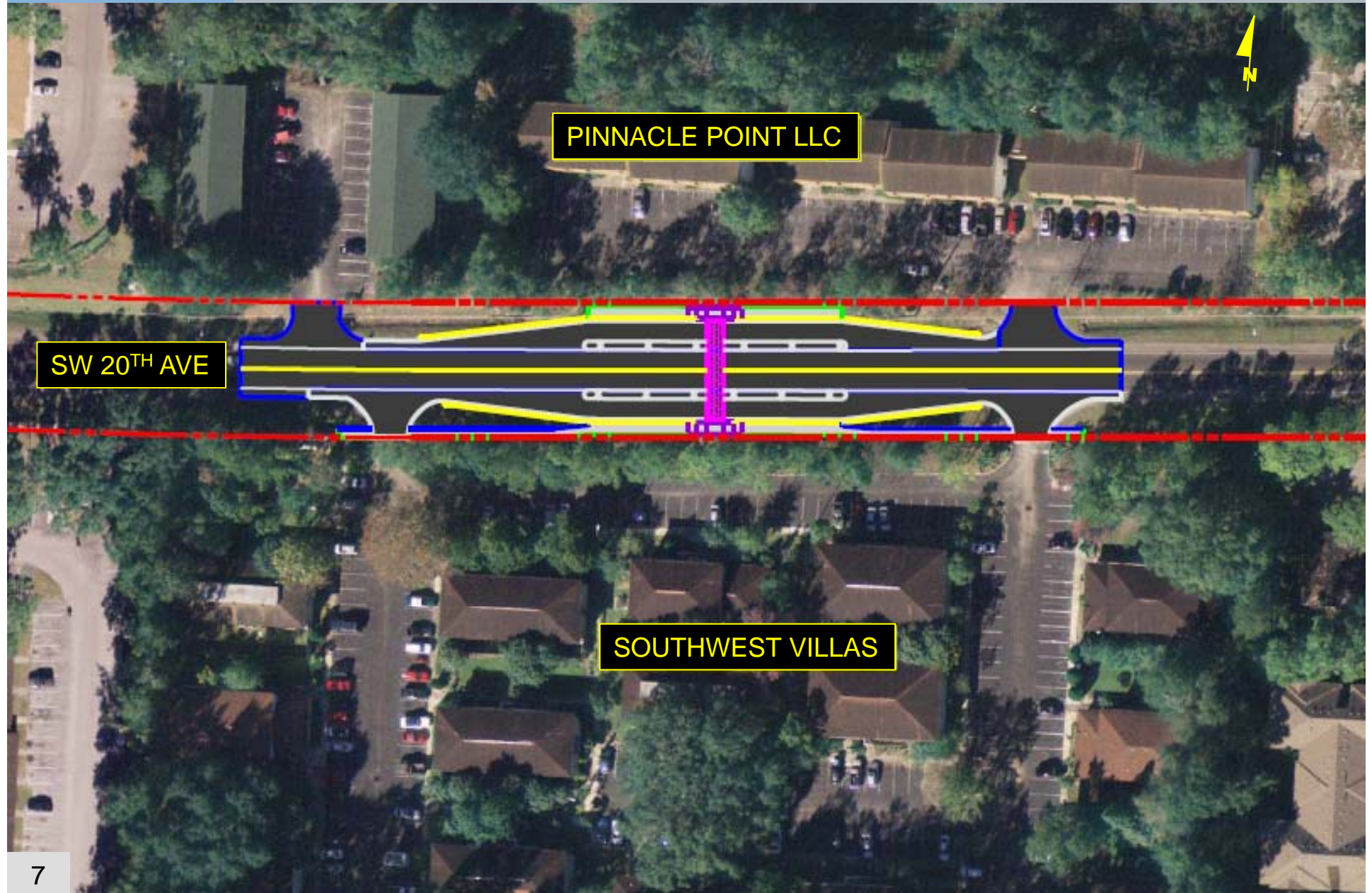
# Typical Section – SW 20<sup>th</sup> Ave



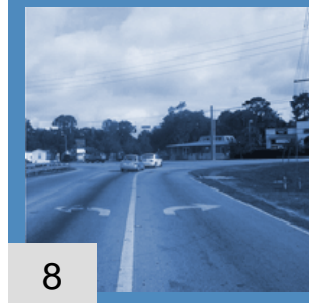
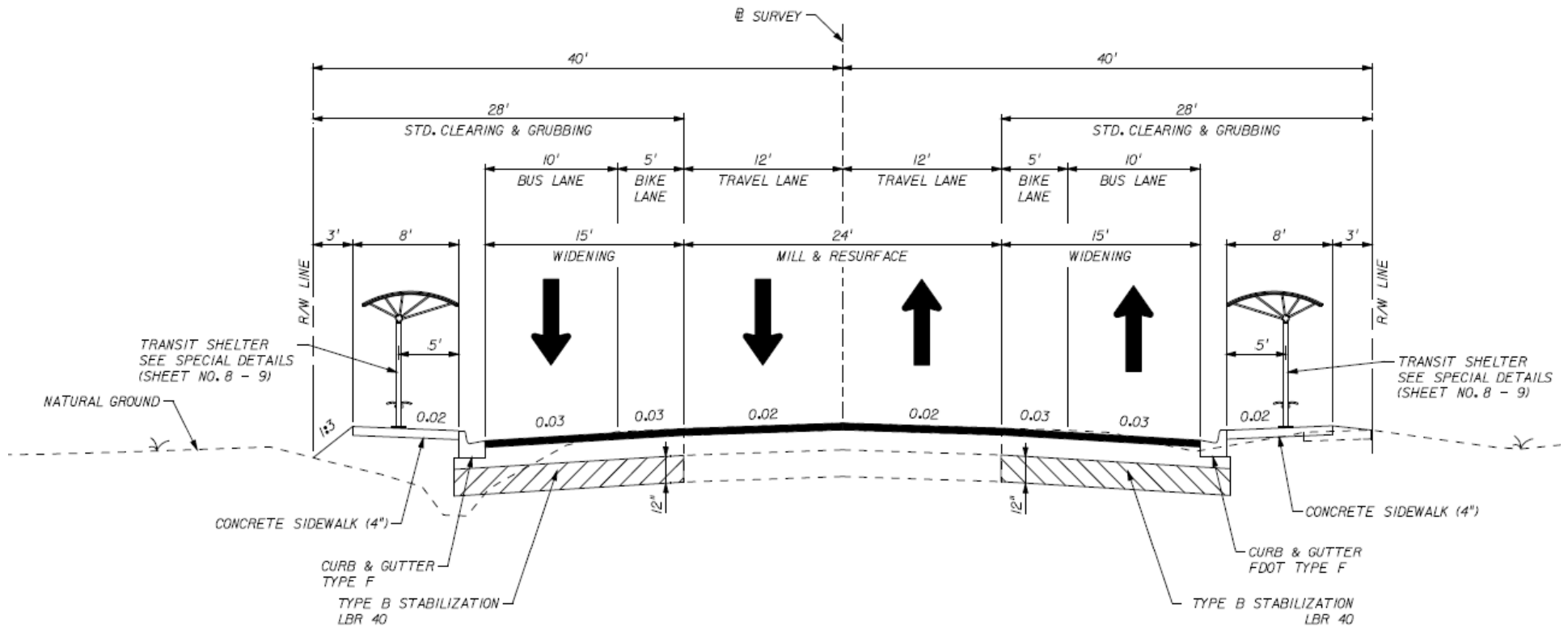




# SW 20<sup>th</sup> Avenue Smart Bus Bay



# Typical Section – Smart Bus Bay







# Bus Shelter





# Schedule



Nov Dec Jan Feb Mar Apr May

**MTPO Review**

**90% Plans**

**Review**

**BOCC Presentation**

**Public Meeting**

**100% Plans**

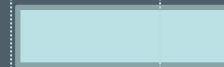
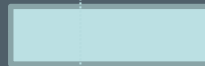
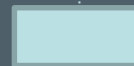
**Review**

**Final Plans**

**Permitting**

**Advertisement**

**Construction Notice to Proceed – October 2010**







## Purpose/Recommendation

### ■ Recommendation

- Approve the 60% design plans as proposed and direct staff to proceed with the development of the 90% plans.

### ■ Interim Projects

- Southwest 40<sup>th</sup> Boulevard at Archer Road
- Southwest 20<sup>th</sup> Avenue at Southwest 43<sup>rd</sup> Street
- Smart Bus Bay

