

# Archer Braid Trail

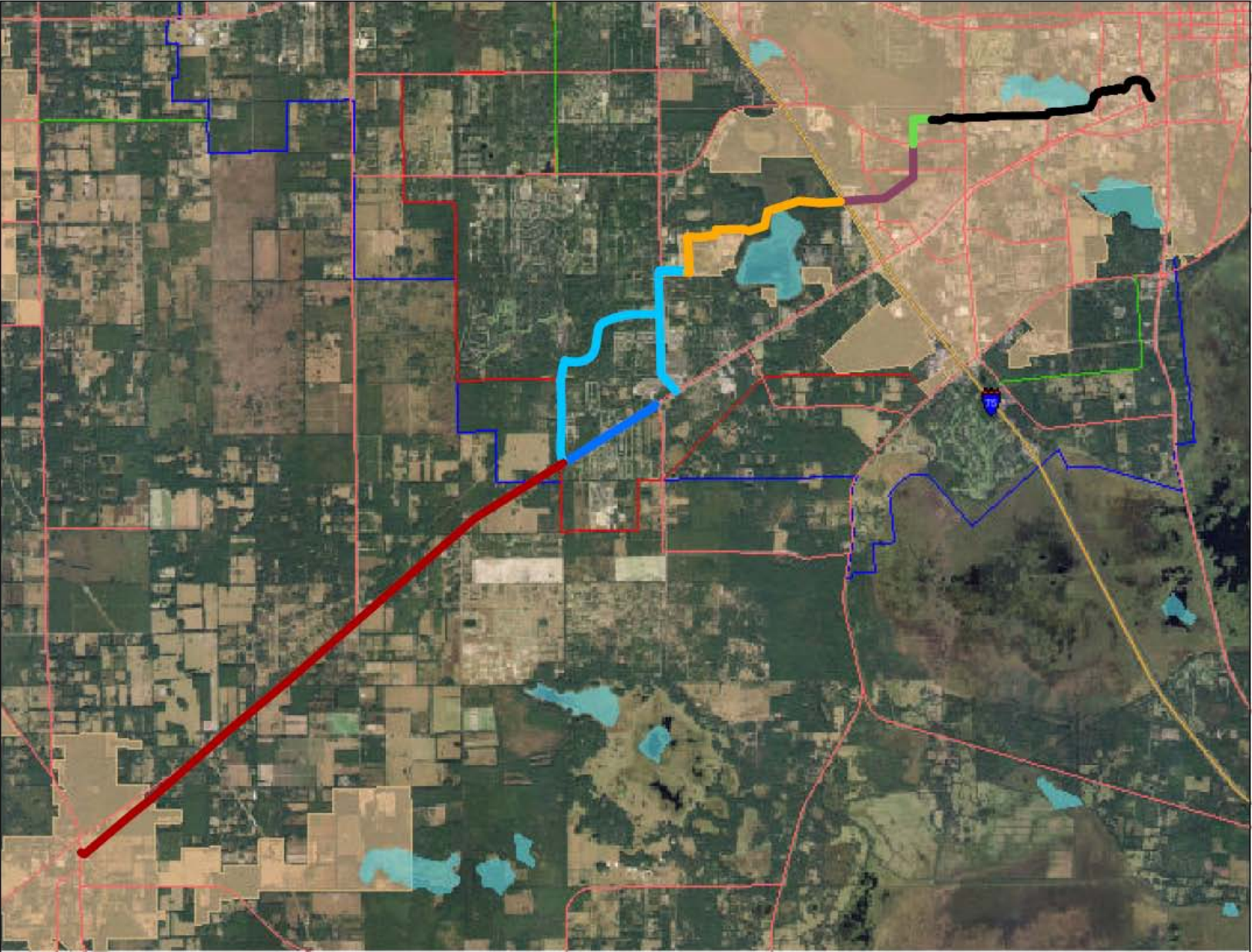
Phase 2: 60% Design Plans

TAC/CAC/BPAB

January 23-24<sup>th</sup>, 2013



# Archer Braid 2012 Status



**Legend**

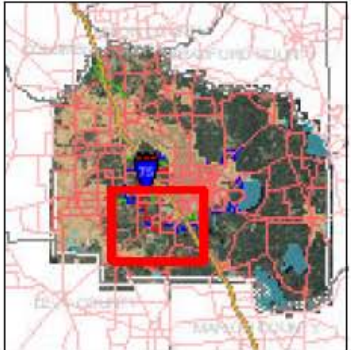
- Cross Campus Greenway FY 2014/15
- Existing Multiuse Trail
- Archer Braid Phase 1 FY 2011/12
- Archer Braid Phase 2 FY 2012/13
- Celebration Pointe to Construct

**Unfunded Segments**

**Status**

- 2011 Enhancement App
- Butler and Existing Path

Prepared by Alachua County  
Growth Management Department  
February 2012  
Data Valid for  
Display Purposes Only



# SW 91<sup>st</sup> Street Segment

Archer Road to SW 46<sup>th</sup> Blvd



# Existing Conditions – SW 91<sup>st</sup> Street

- ▶ 100' Right-of-Way
- ▶ No Sidewalks Or Pathway Within Right-of-Way
- ▶ Drainage Swales Both Sides Except At SW 46<sup>th</sup> Blvd.
- ▶ Raised Median/ Curb And Gutter At SW 46<sup>th</sup> Blvd.
- ▶ Vegetation And Trees To Back Of Swale
- ▶ Minor Utilities

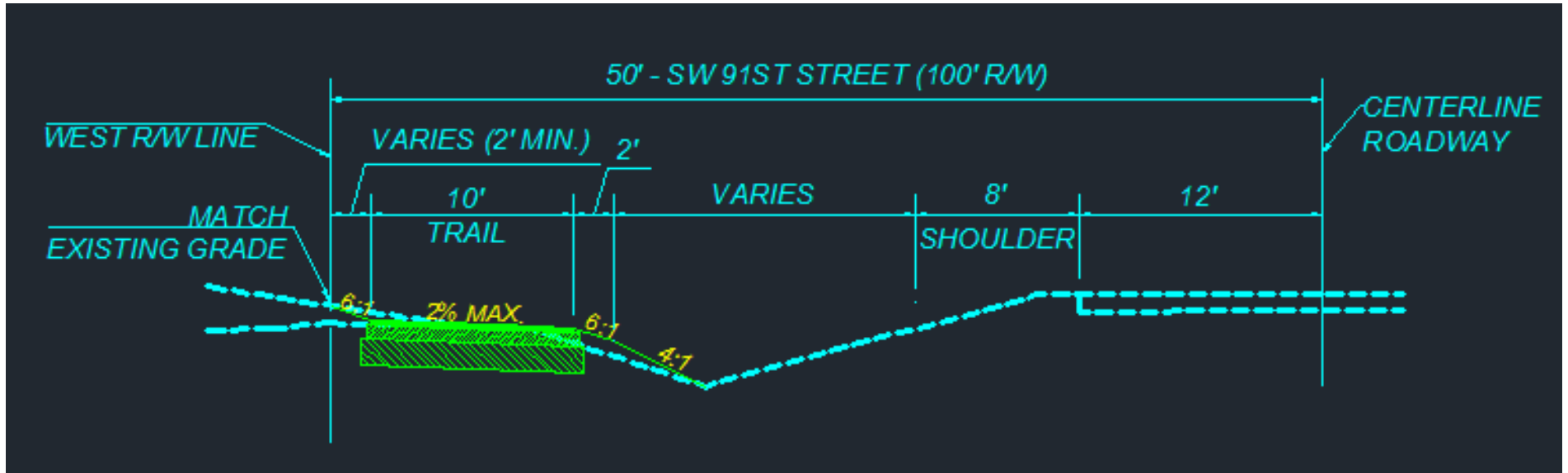


# Proposed Alignment – SW 91<sup>st</sup> Street

- ▶ Trail To Be Located On West Side of Roadway
- ▶ Trail To Be Located Near West R/W Line
- ▶ Most Of The Trail Located 2' Off West R/W Line
- ▶ Exceptions:
  - 10' +/- Off Pavement Edge Along Retention Area
  - Beyond Stop Bar At Intersections

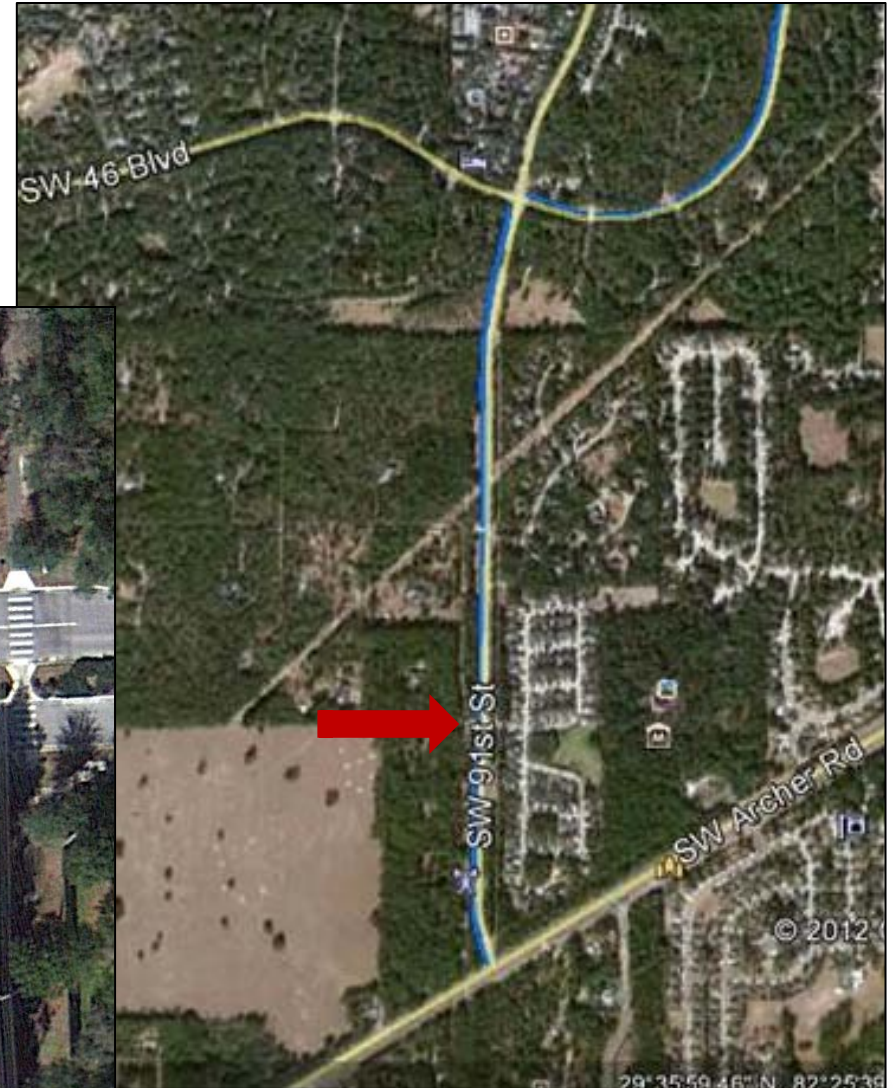


# Proposed Typical – SW 91<sup>st</sup> Street



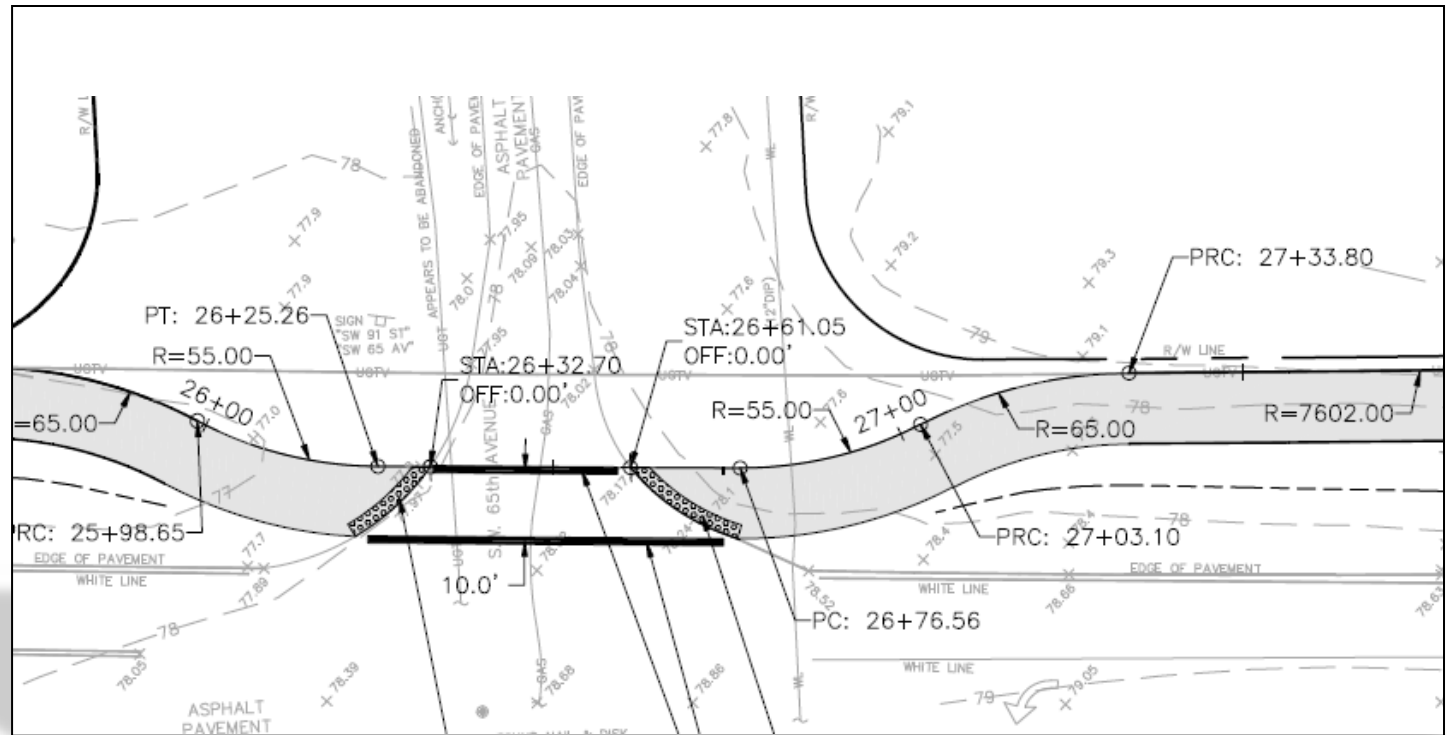
# Deviation from the R/W – SW 91<sup>st</sup> St.

- ▶ SW 65<sup>th</sup> Avenue
- ▶ Beyond Stop Bar
- ▶ Increase Visibility



# Deviation from the R/W – SW 91<sup>st</sup> St.

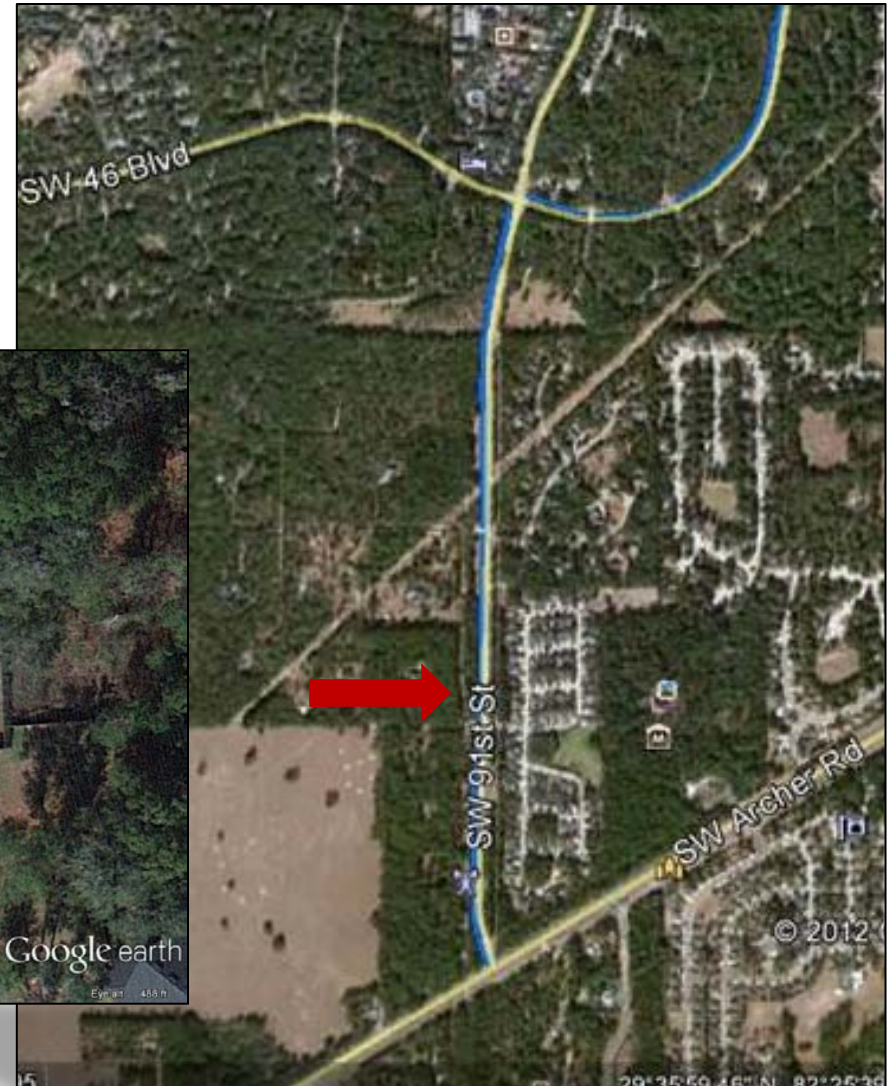
- ▶ SW 65<sup>th</sup> Avenue Intersection





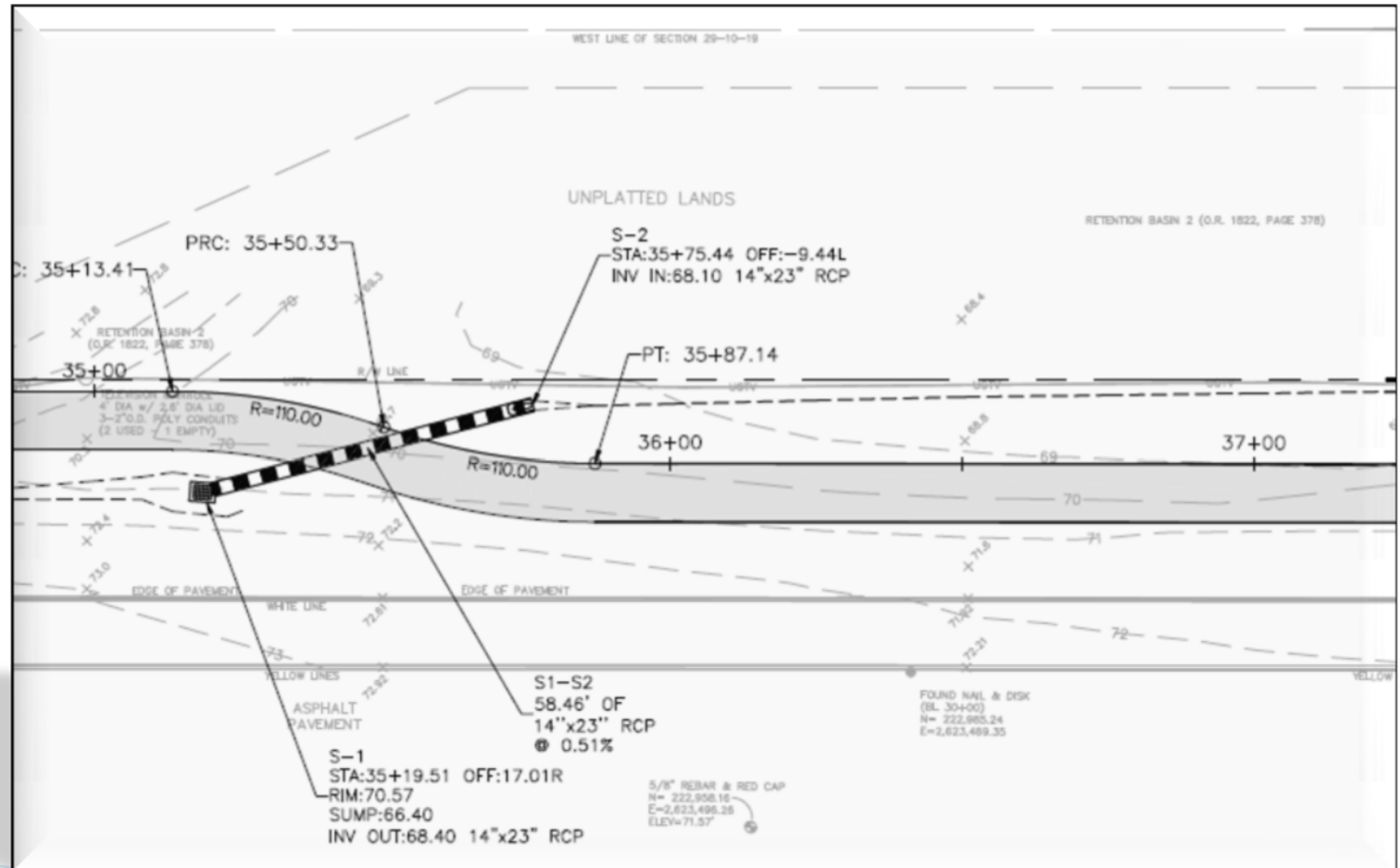
# Deviation from the R/W – SW 91<sup>st</sup> St.

- ▶ Retention Basin 2
- ▶ Capacity Preserved
- ▶ Avoid Volume Reduction



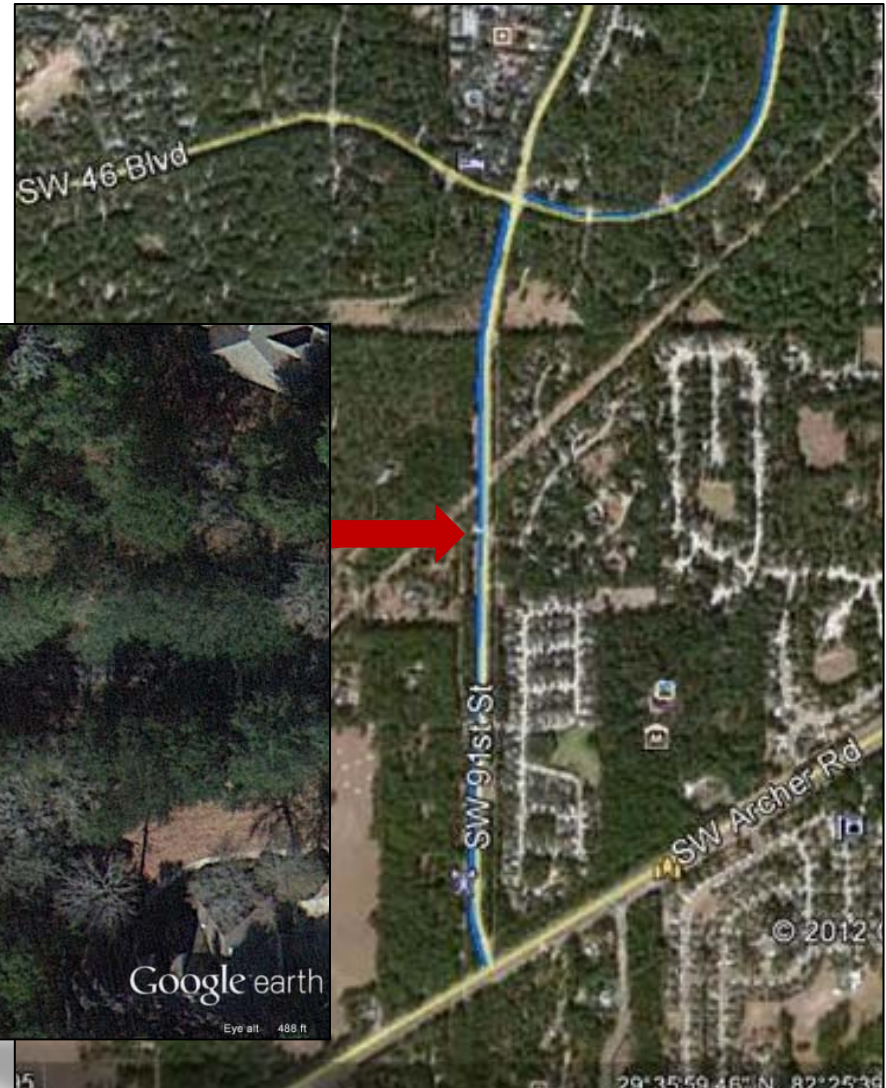
# Deviation from the R/W – SW 91<sup>st</sup> St.

- Retention Basin 2



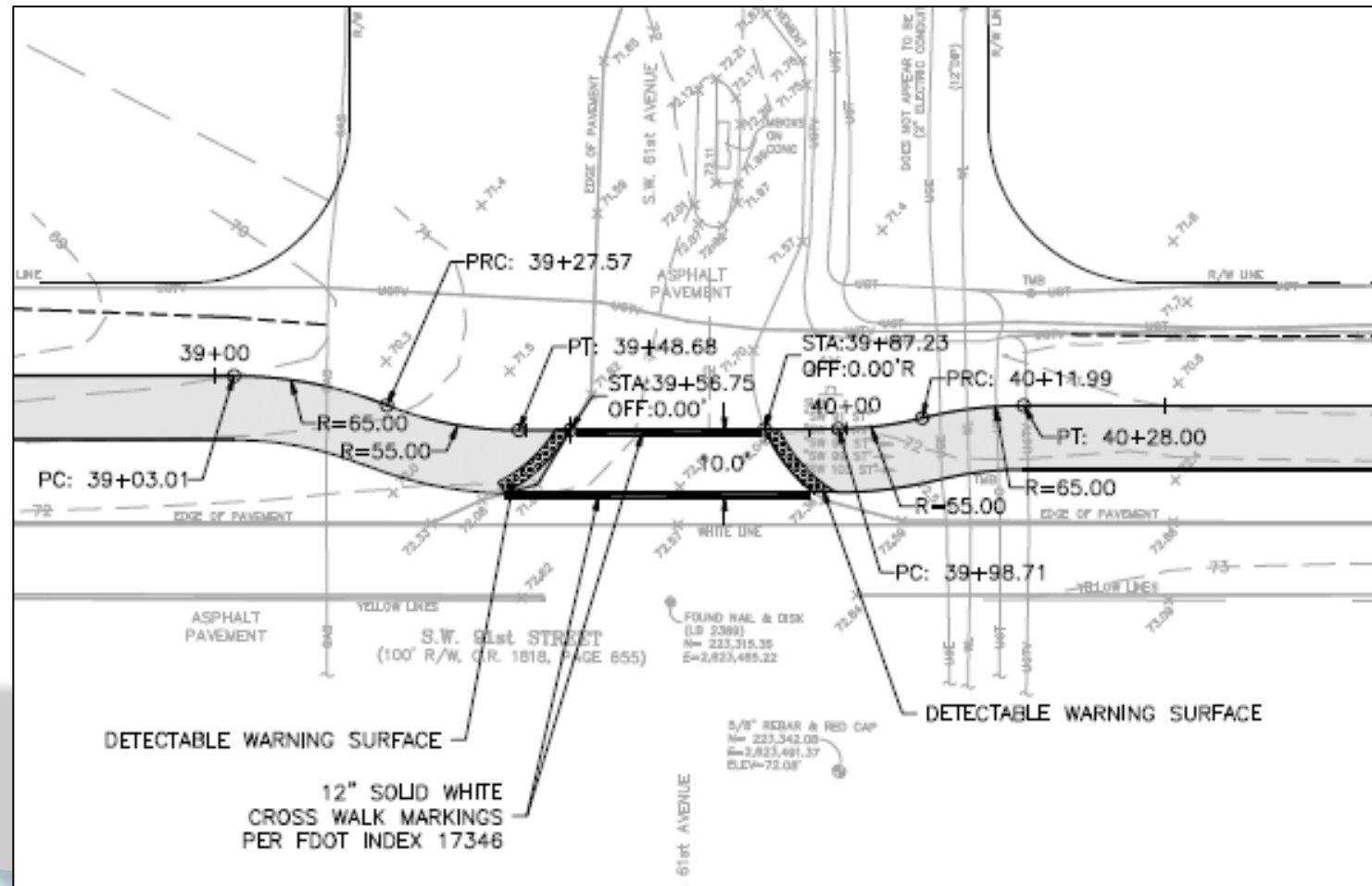
# Deviation from the R/W – SW 91<sup>st</sup> St.

- ▶ SW 61<sup>th</sup> Avenue
- ▶ Beyond Stop Bar
- ▶ Increase Visibility



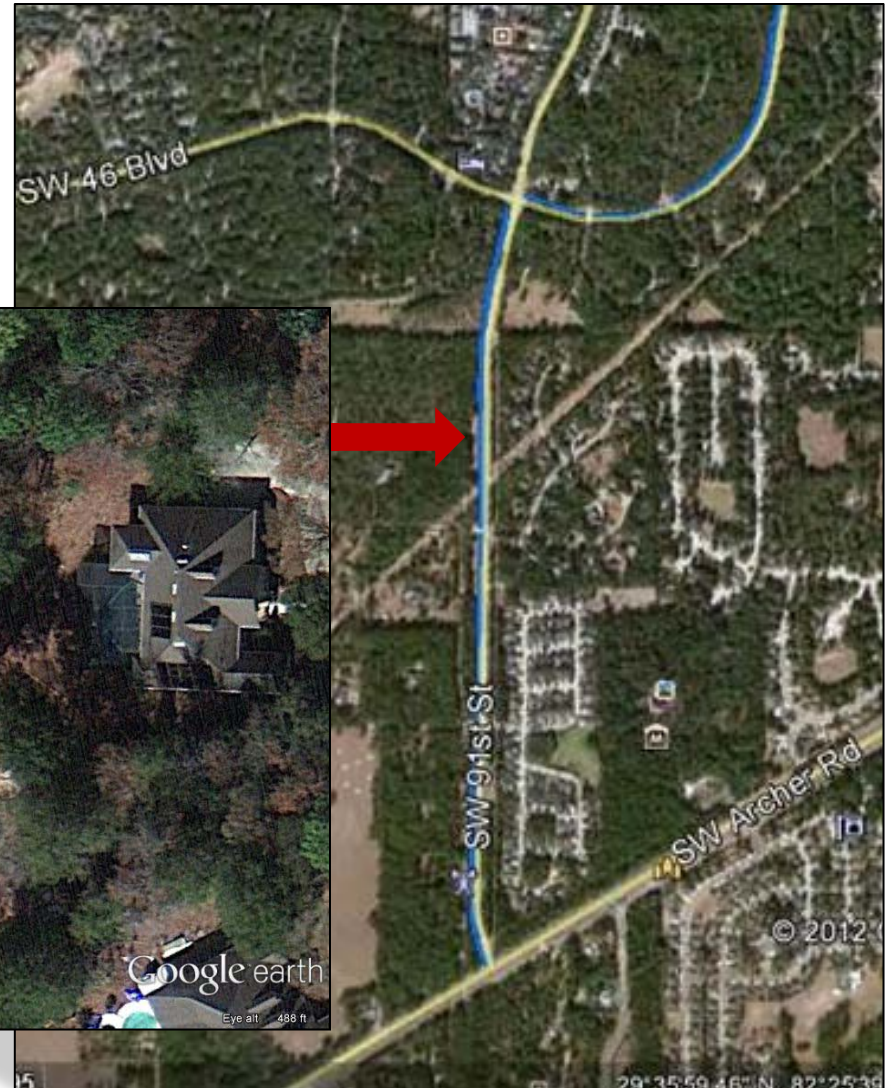
# Deviation from the R/W – SW 91<sup>st</sup> St.

## ▶ SW 61<sup>st</sup> Avenue



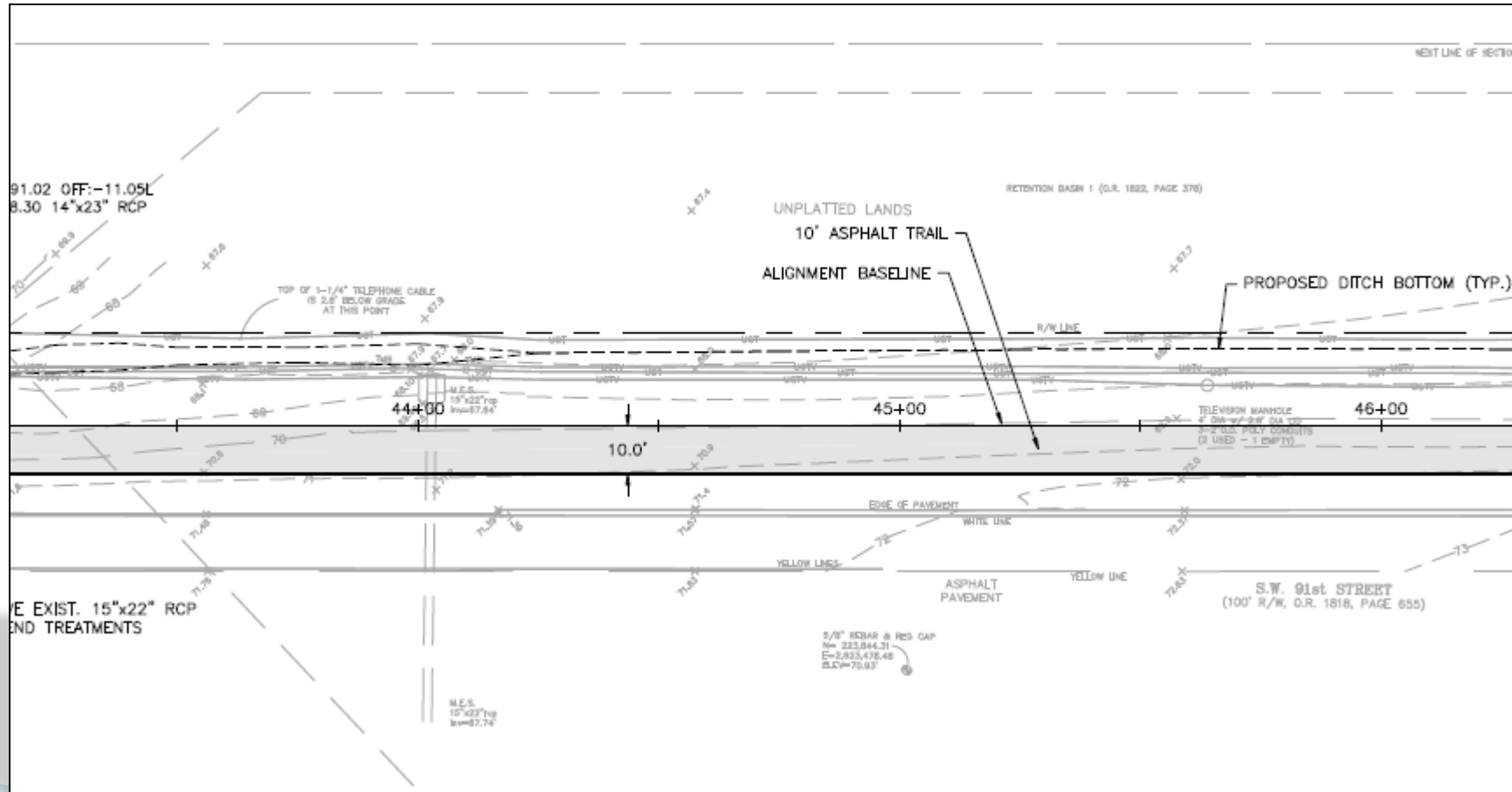
# Deviation from the R/W – SW 91<sup>st</sup> St.

- ▶ Retention Basin 1
- ▶ Capacity Preserved
- ▶ Avoid Volume Reduction



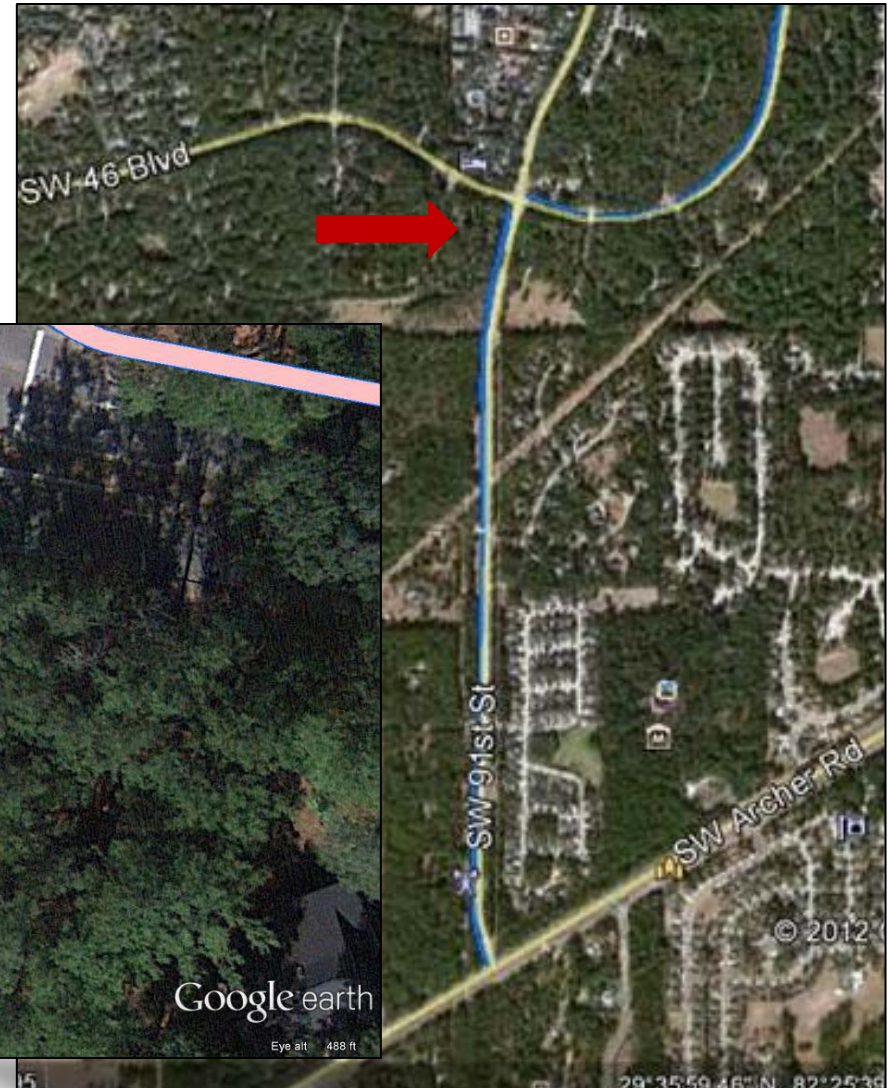
# Deviation from the R/W – SW 91<sup>st</sup> St.

## ► Retention Basin 1



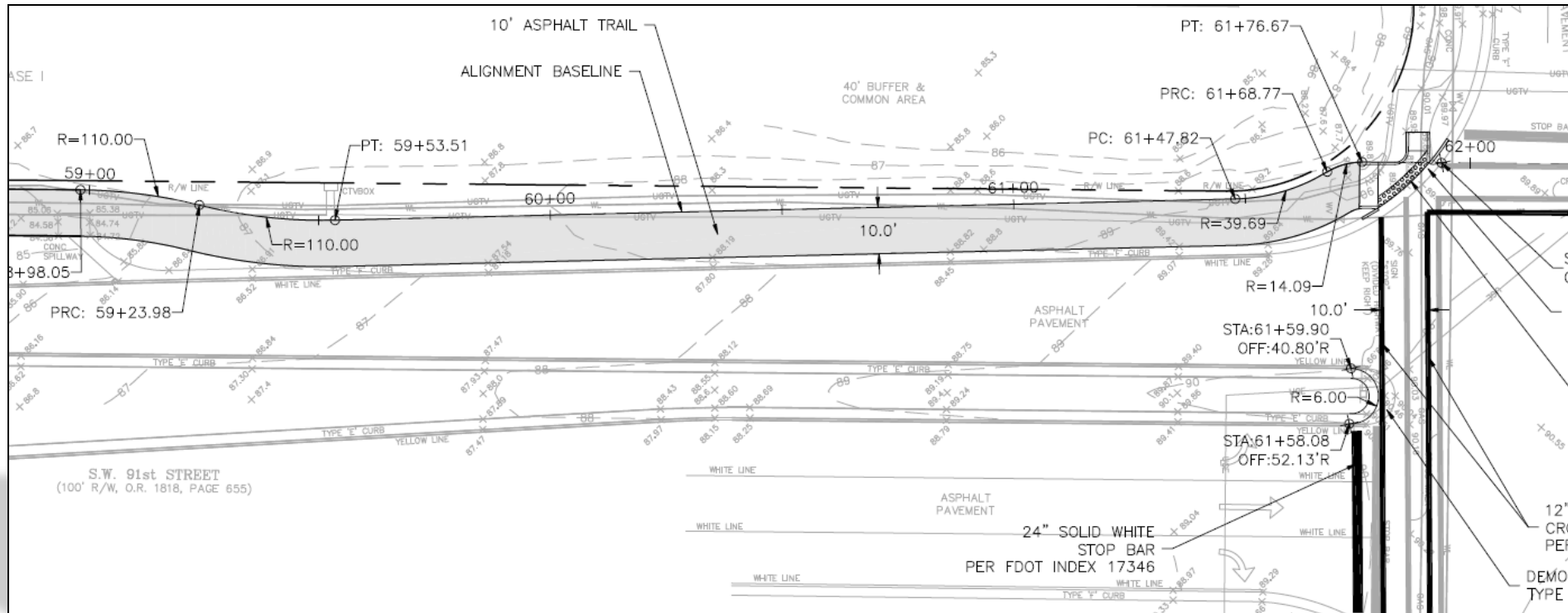
# Deviation from the R/W – SW 91<sup>st</sup> St.

- ▶ Limited Right-of-Way
- ▶ Vegetation Impacts



# Deviation from the R/W – SW 91<sup>st</sup> St.

- SW 91<sup>st</sup> Street south of SW 46<sup>th</sup> Boulevard





# SW 46<sup>th</sup> Boulevard Segment

## SW 91<sup>st</sup> Street to Tower Road



# Existing Conditions – SW 46<sup>th</sup> Blvd.

- ▶ 100' Right-of-Way
- ▶ Centerline Of Roadway 2' South & West Of C/L
- ▶ No Sidewalks Or Trails Within Right-of-Way
- ▶ Drainage Swales Both Sides Except At SW 91<sup>st</sup> St.
- ▶ Raised Median/ Curb And Gutter At SW 91<sup>st</sup> St.
- ▶ Vegetation/Trees/Swale Back
- ▶ Minor Utilities

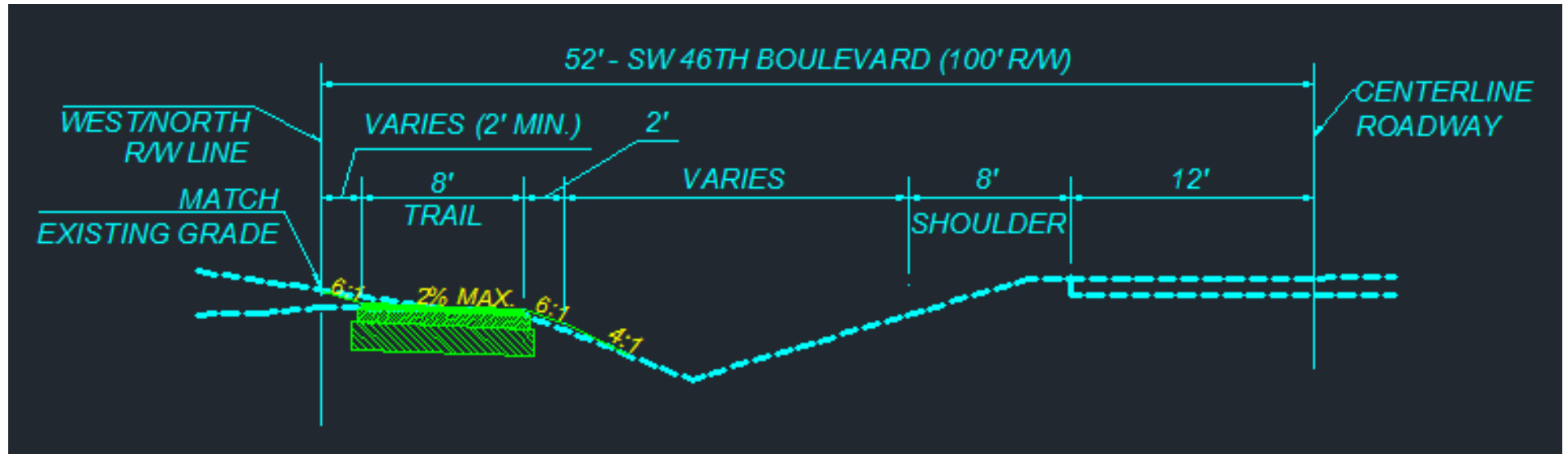


# Proposed Alignment – SW 46<sup>th</sup> Blvd.

- ▶ Trail To Be Located Near West R/W Line
- ▶ Most Of The Trail Located 2' Off West R/W Line
- ▶ Exceptions:
  - Meander To Avoid Obstacles Near SW 91<sup>st</sup> Street.
  - Beyond Areas Of Steep Embankment
  - 10' South Of North R/W Line Near SW 75<sup>th</sup> Street

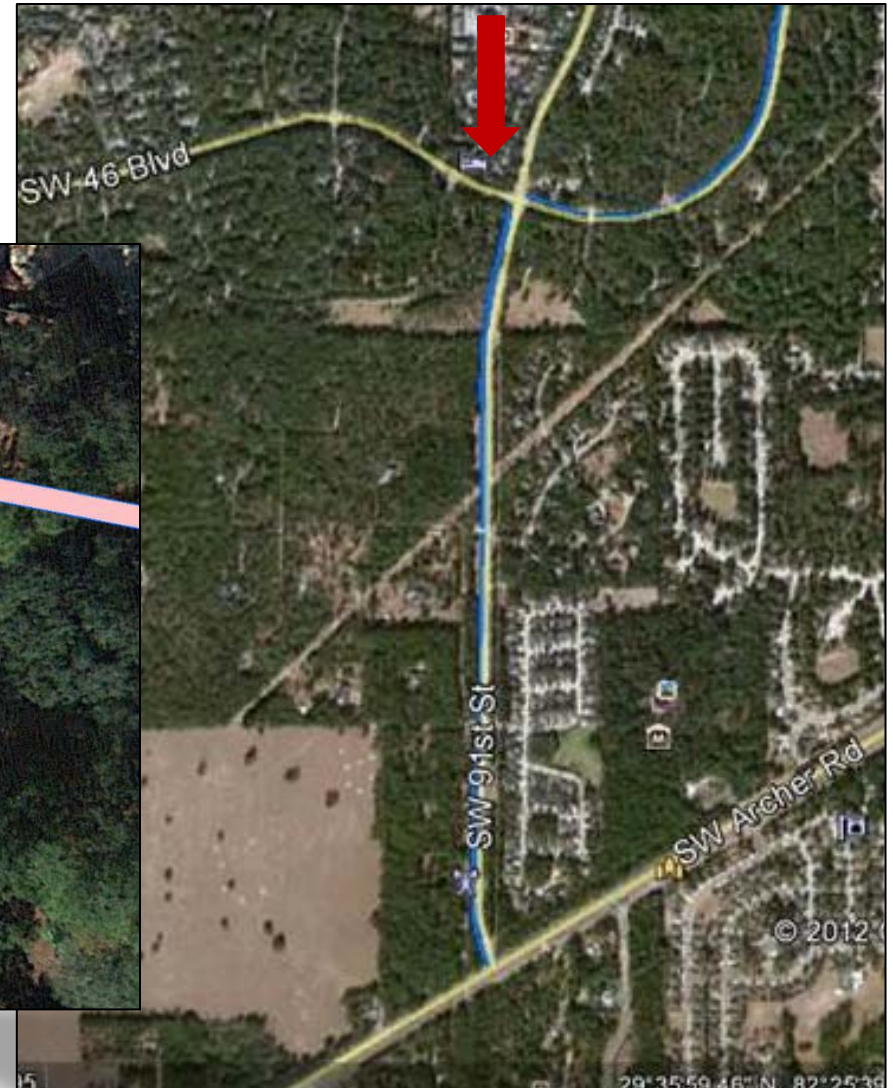
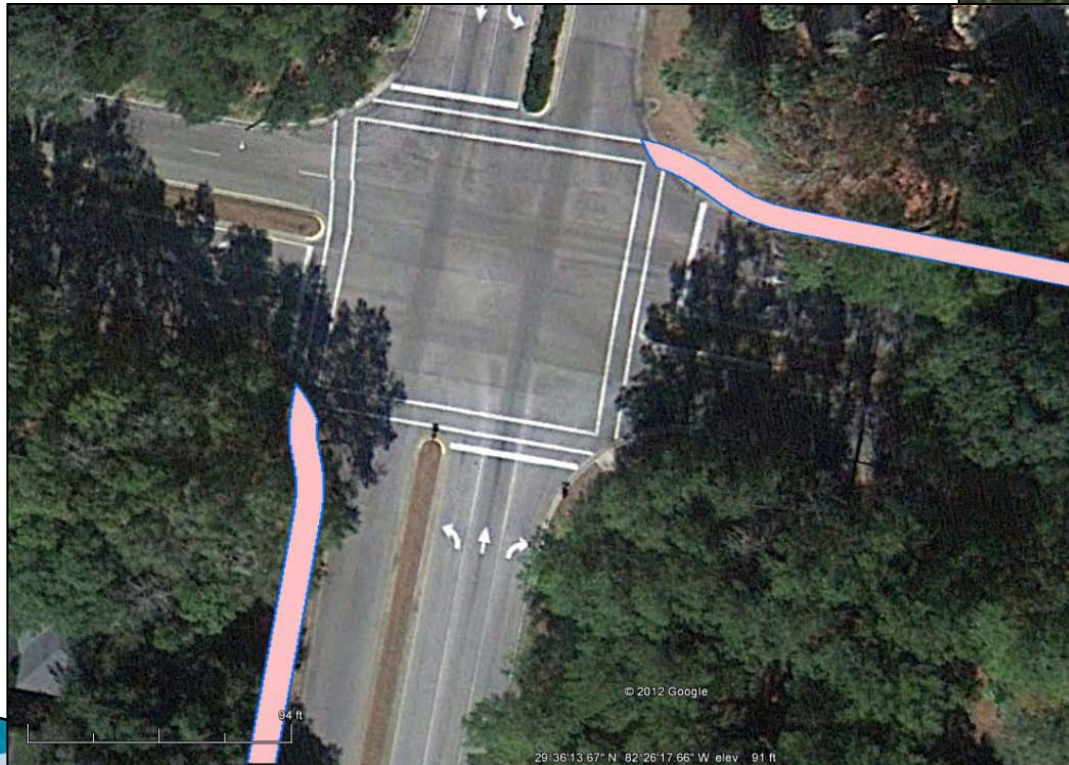


# Proposed Typical – SW 46<sup>th</sup> Blvd.



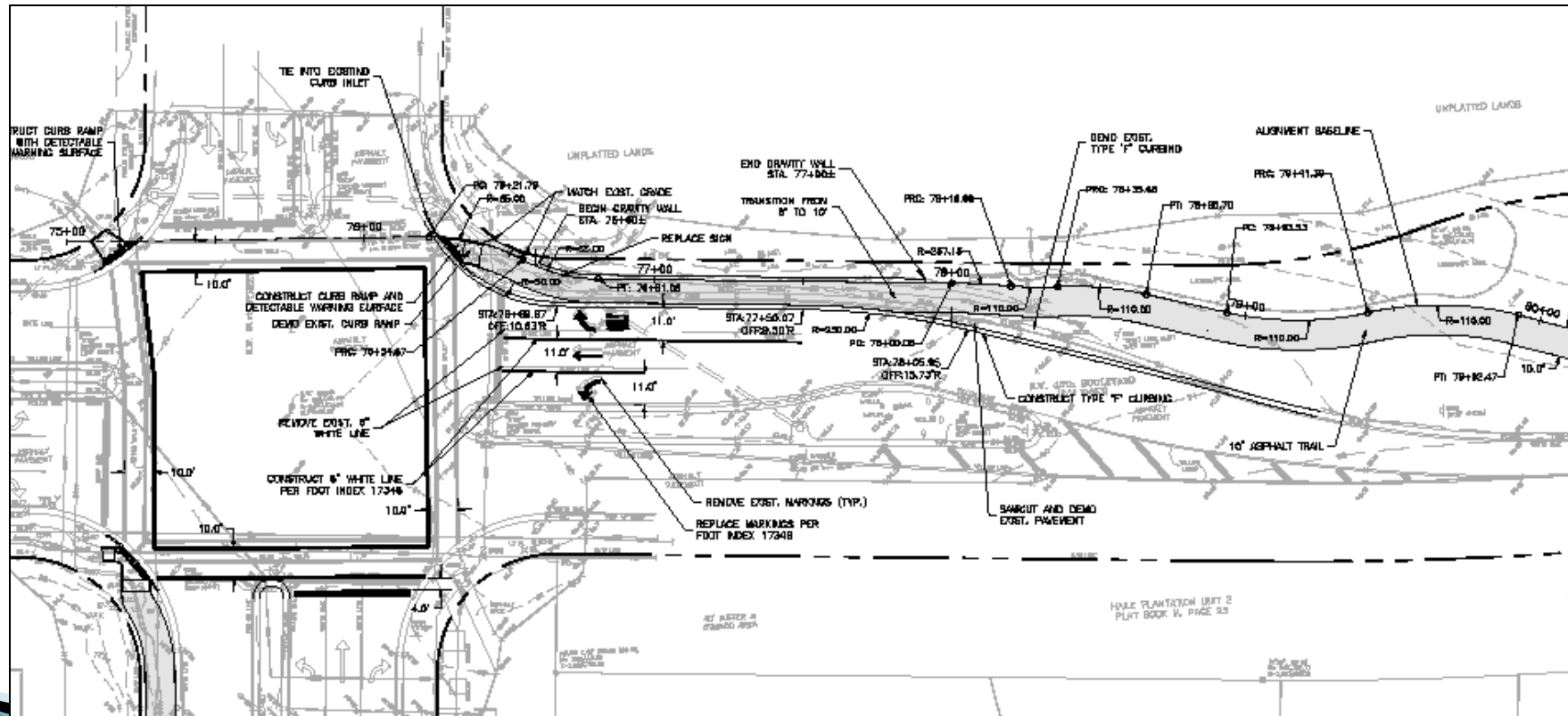
# SW 91<sup>st</sup> Street/SW 46<sup>th</sup> Blvd. Intersection

- ▶ Limited Right-of-Way
- ▶ Grade Change



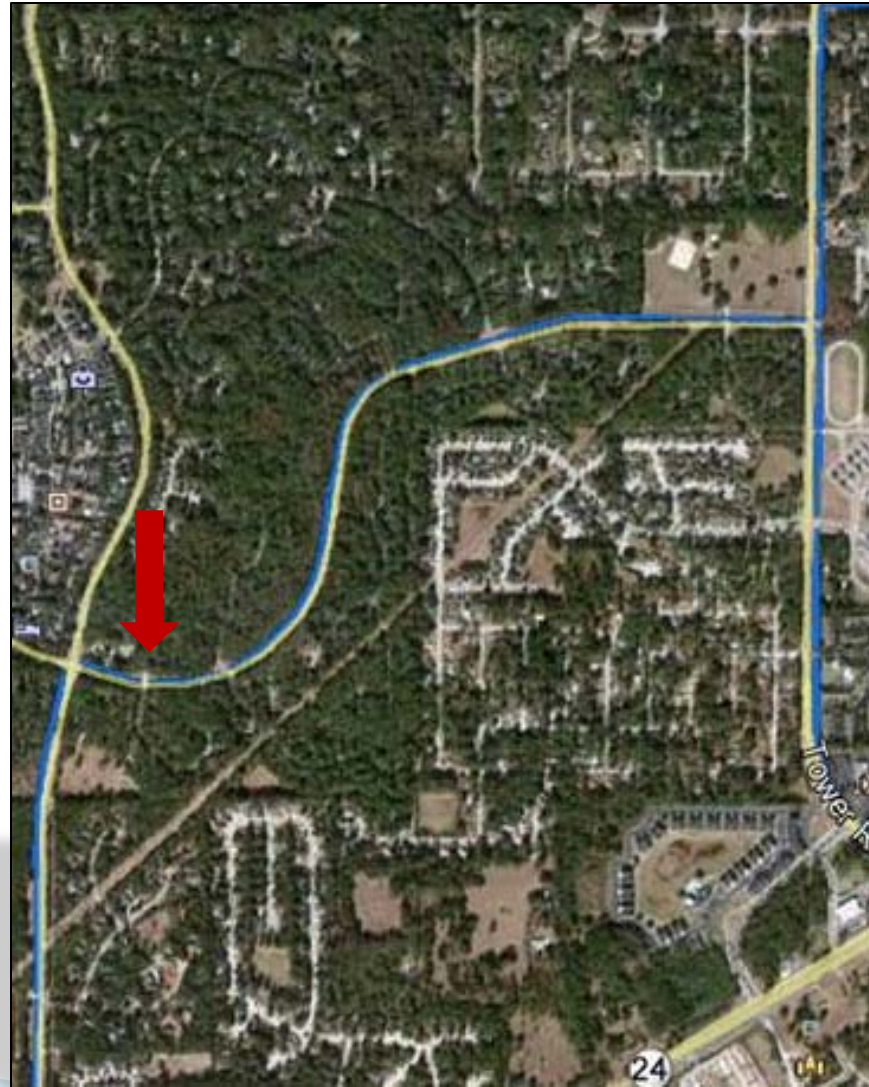
# SW 91<sup>st</sup> Street/SW 46<sup>th</sup> Blvd. Intersection

- ▶ Limited Right-of-Way
- ▶ Grade Change



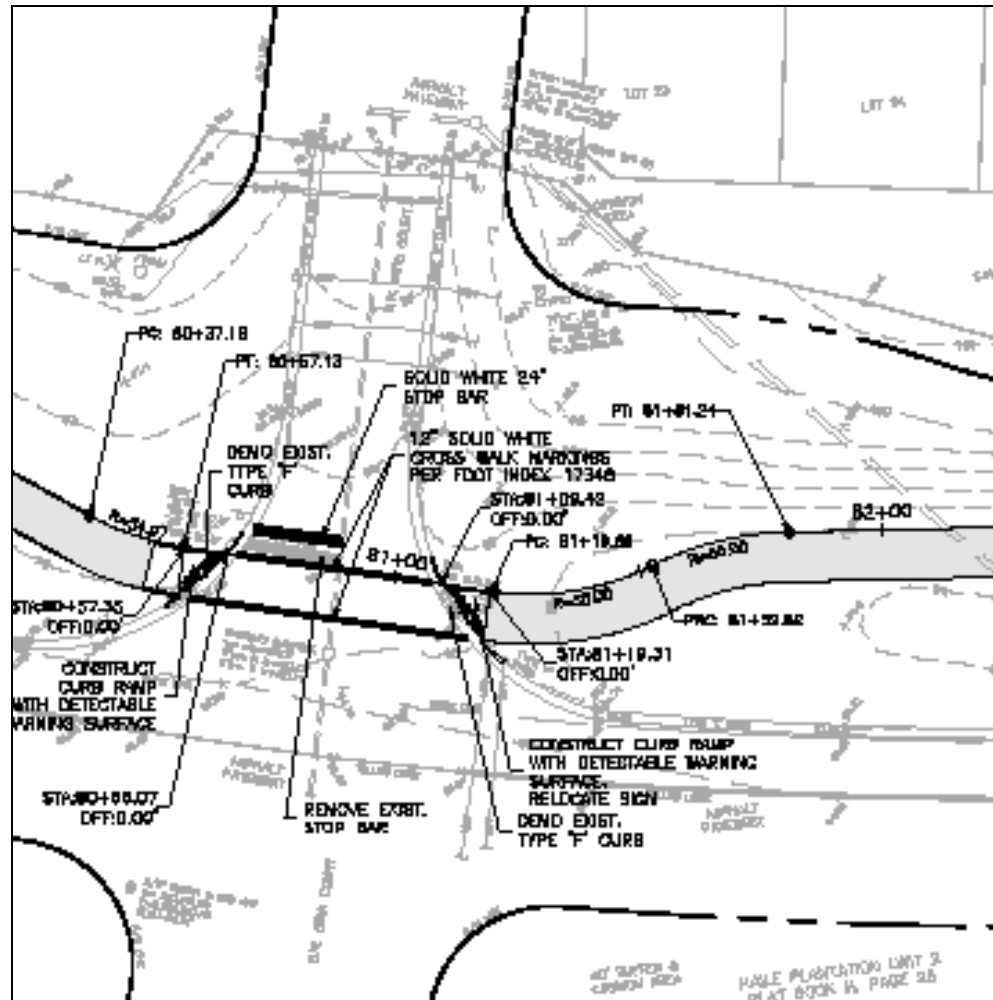
# Deviation from the R/W – SW 46<sup>th</sup> Blvd.

- ▶ SW 88<sup>th</sup> Court
- ▶ Beyond Stop Bar
- ▶ Increase Visibility



# Deviation from the R/W – SW 46<sup>th</sup> Blvd.

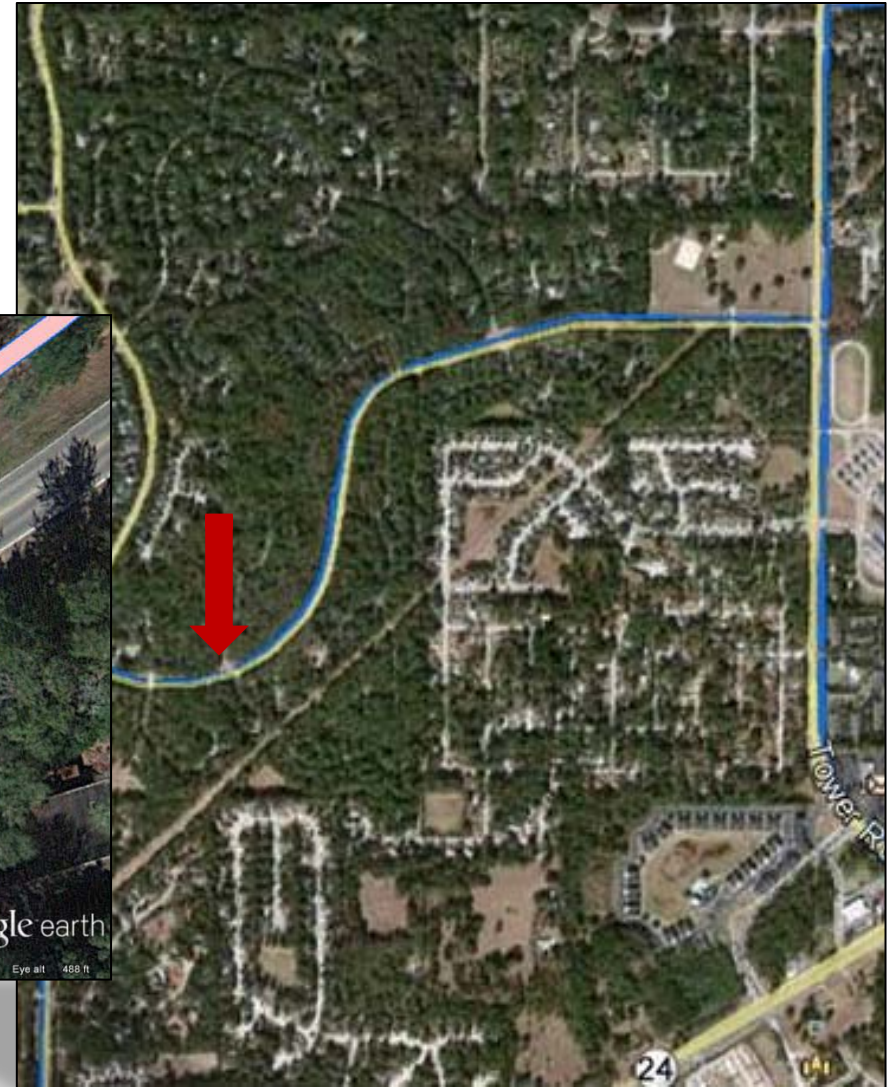
- ▶ SW 88<sup>th</sup> Court





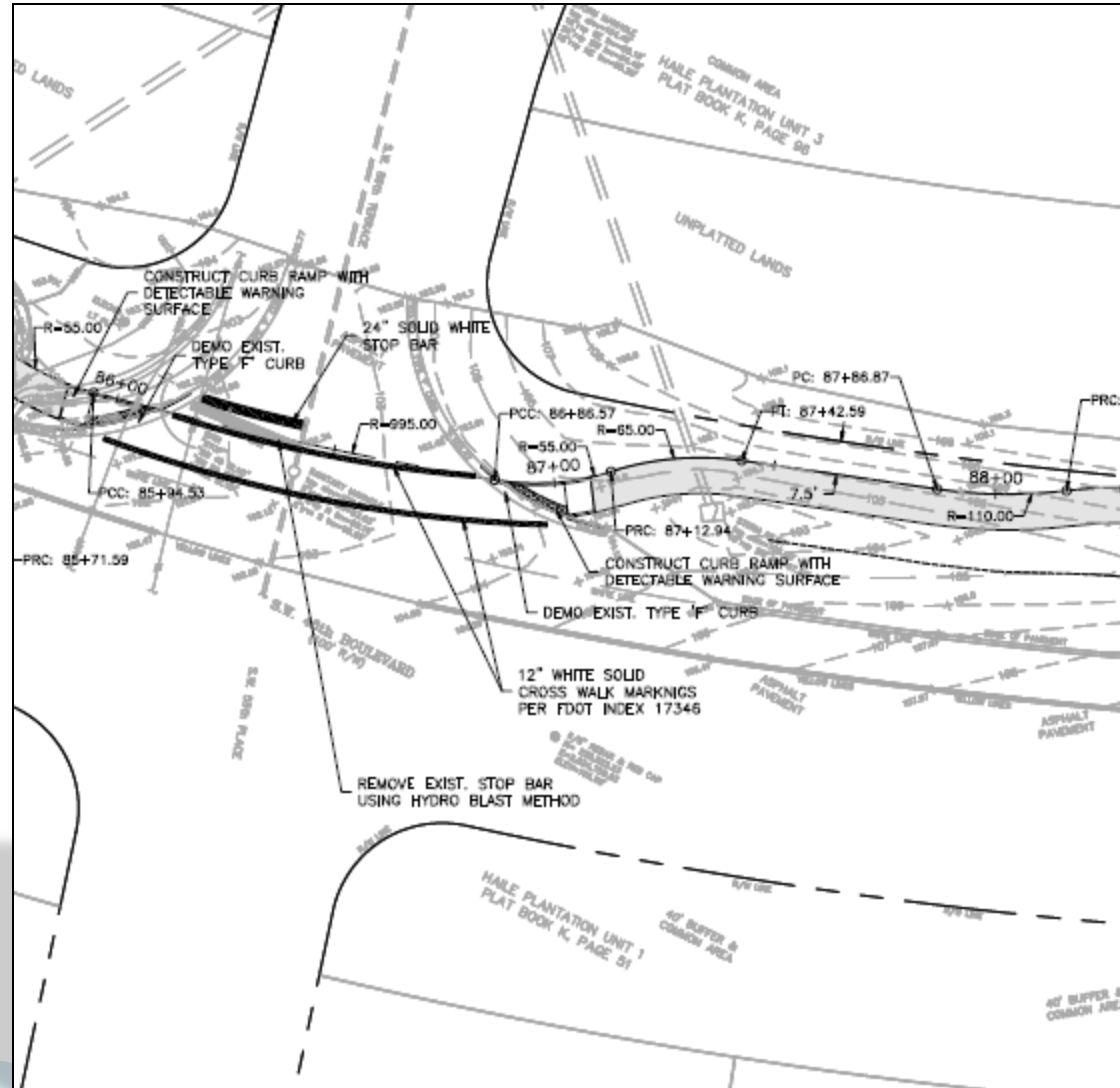
# Deviation from the R/W – SW 46<sup>th</sup> Blvd.

- ▶ SW 86<sup>th</sup> Terrace
- ▶ Beyond Stop Bar
- ▶ Increase Visibility



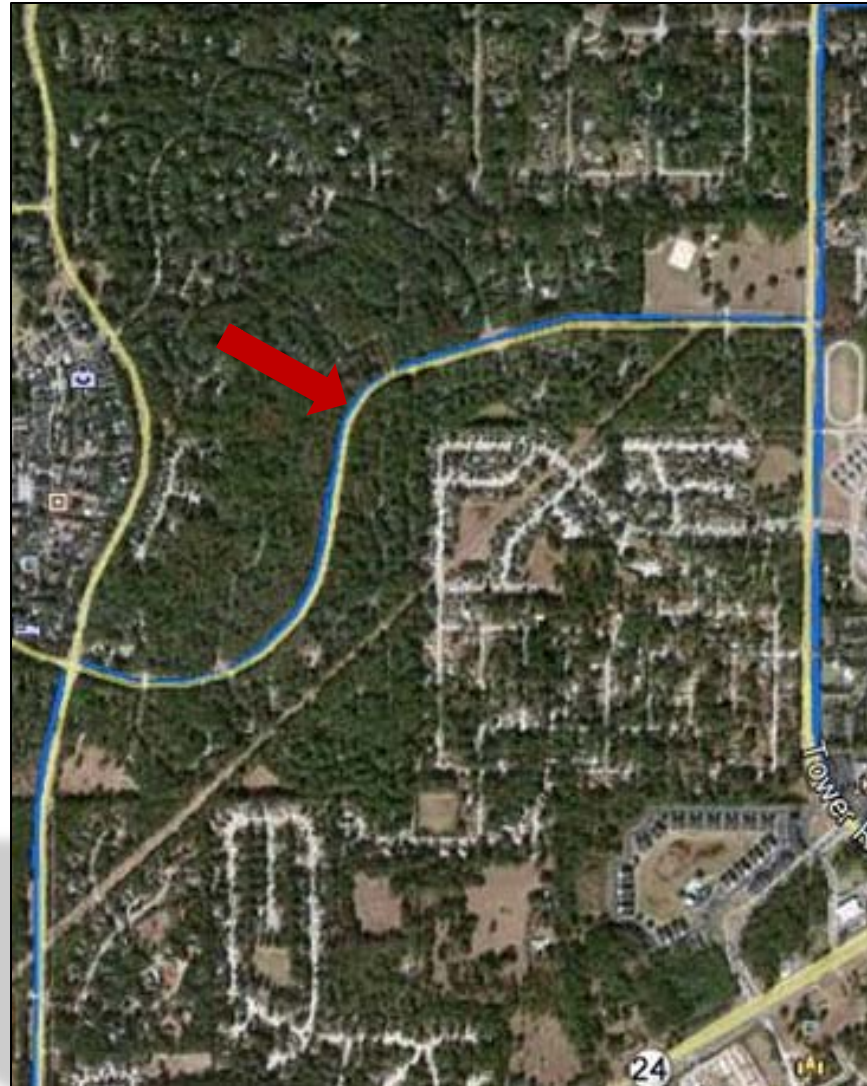
# Deviation from the R/W – SW 46<sup>th</sup> Blvd.

- ▶ SW 86<sup>th</sup> Terrace



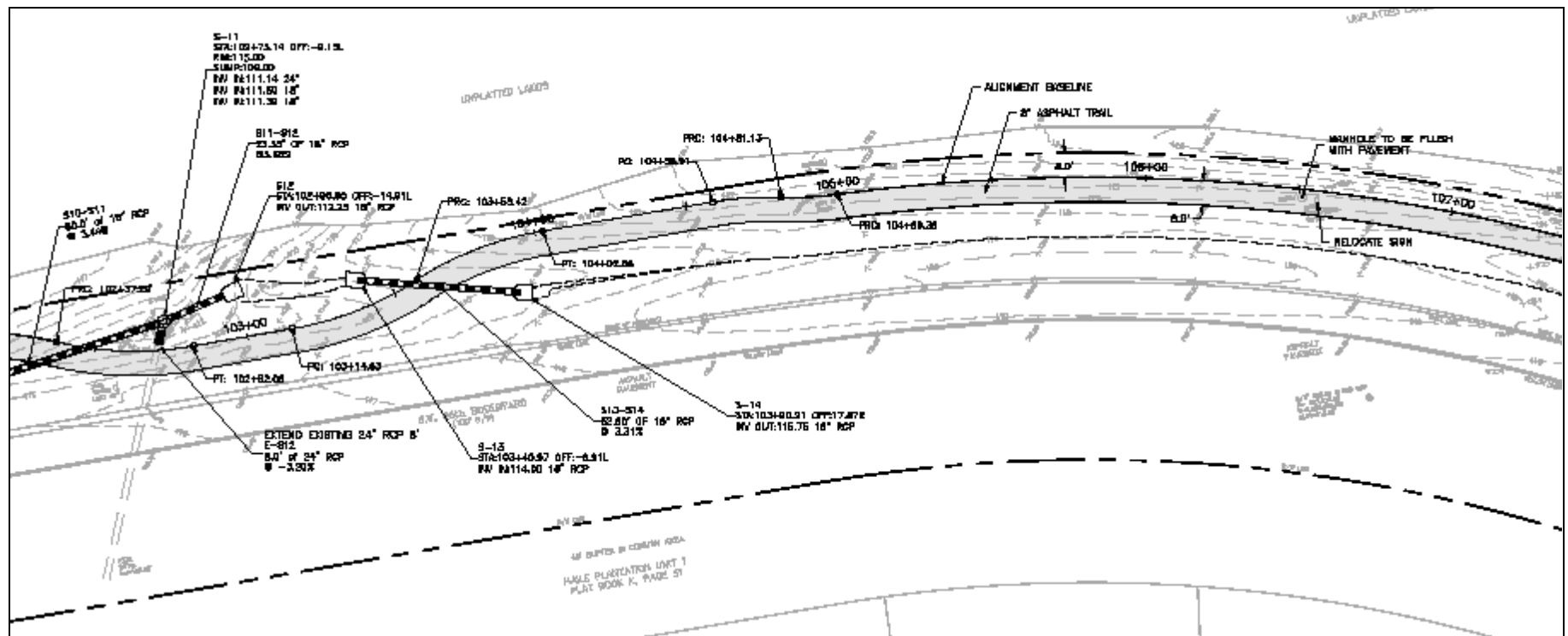
# Deviation from the R/W – SW 46<sup>th</sup> Blvd.

- ▶ North/South “Leg”
- ▶ Drainage Ditch
- ▶ Steep Grades



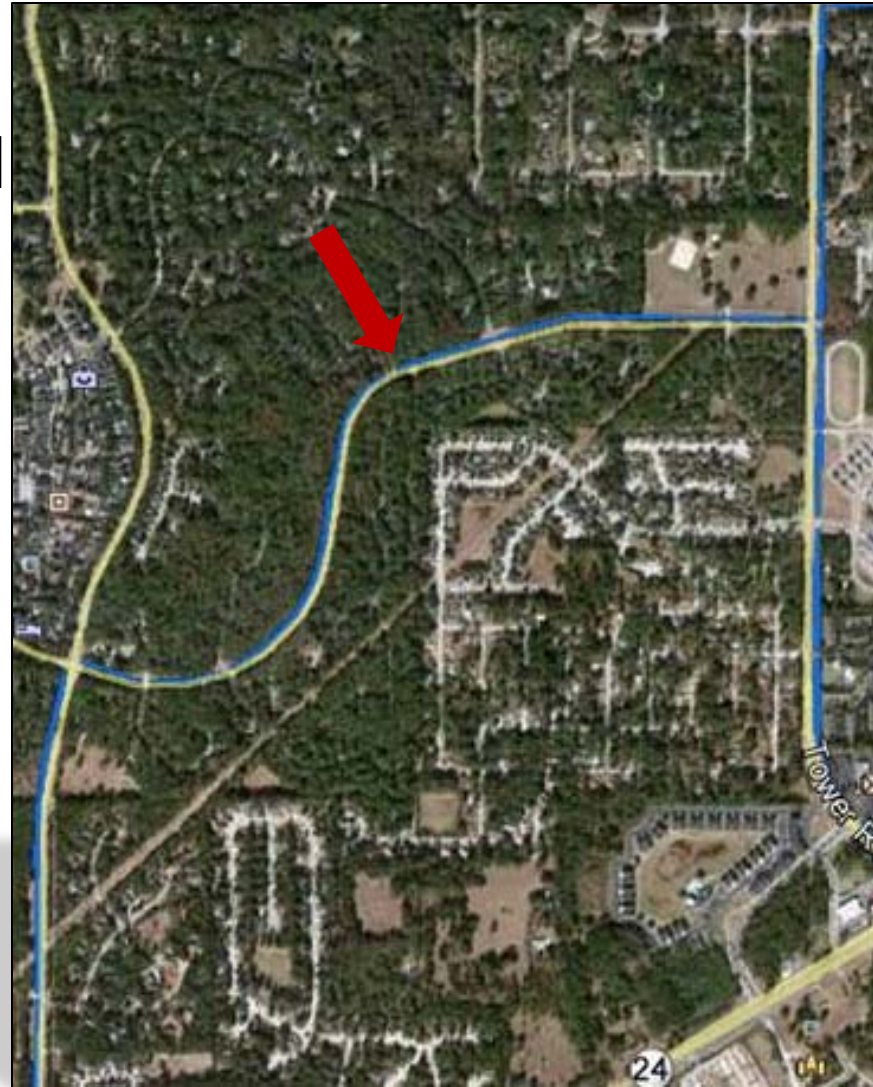
# Deviation from the R/W – SW 46<sup>th</sup> Blvd.

## ▶ North/South “Leg”



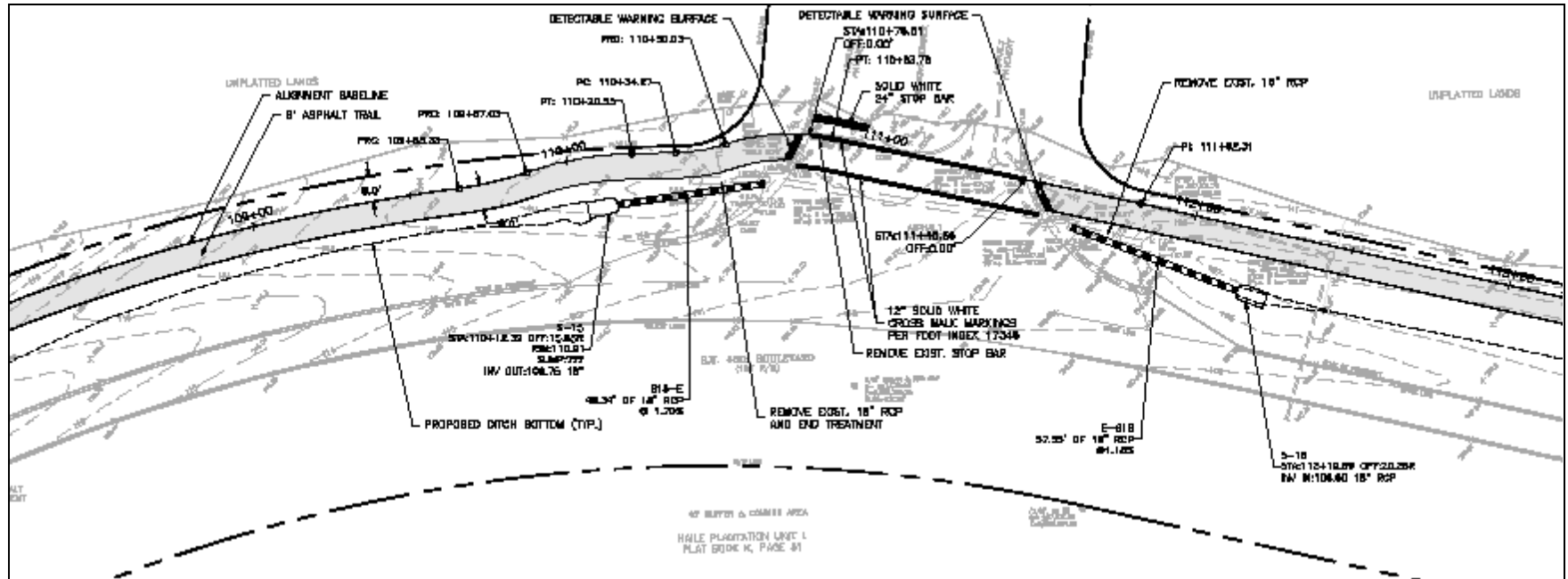
# Deviation from the R/W – SW 46<sup>th</sup> Blvd.

- ▶ SW 83<sup>rd</sup> Terrace
- ▶ Beyond Stop Bar and Behind Storm Inlet
- ▶ Increase Visibility



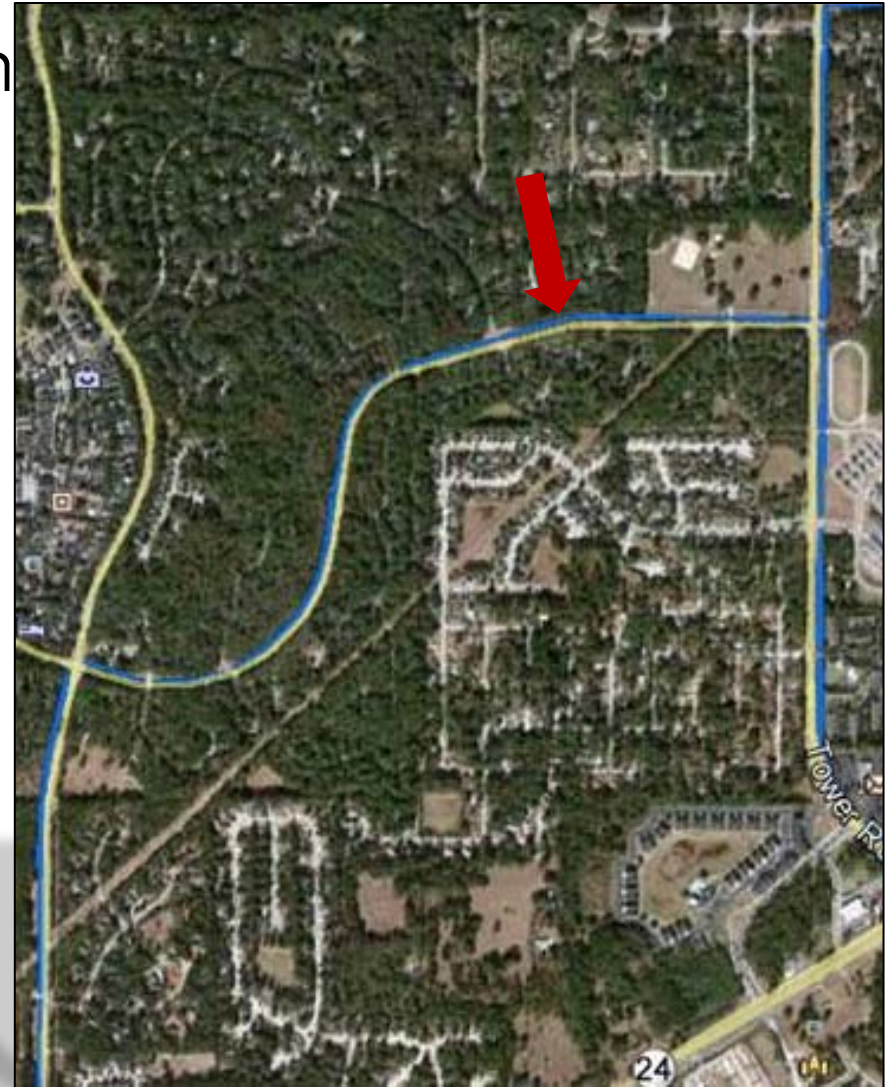
# Deviation from the R/W – SW 46<sup>th</sup> Blvd.

- ▶ SW 83<sup>rd</sup> Terrace



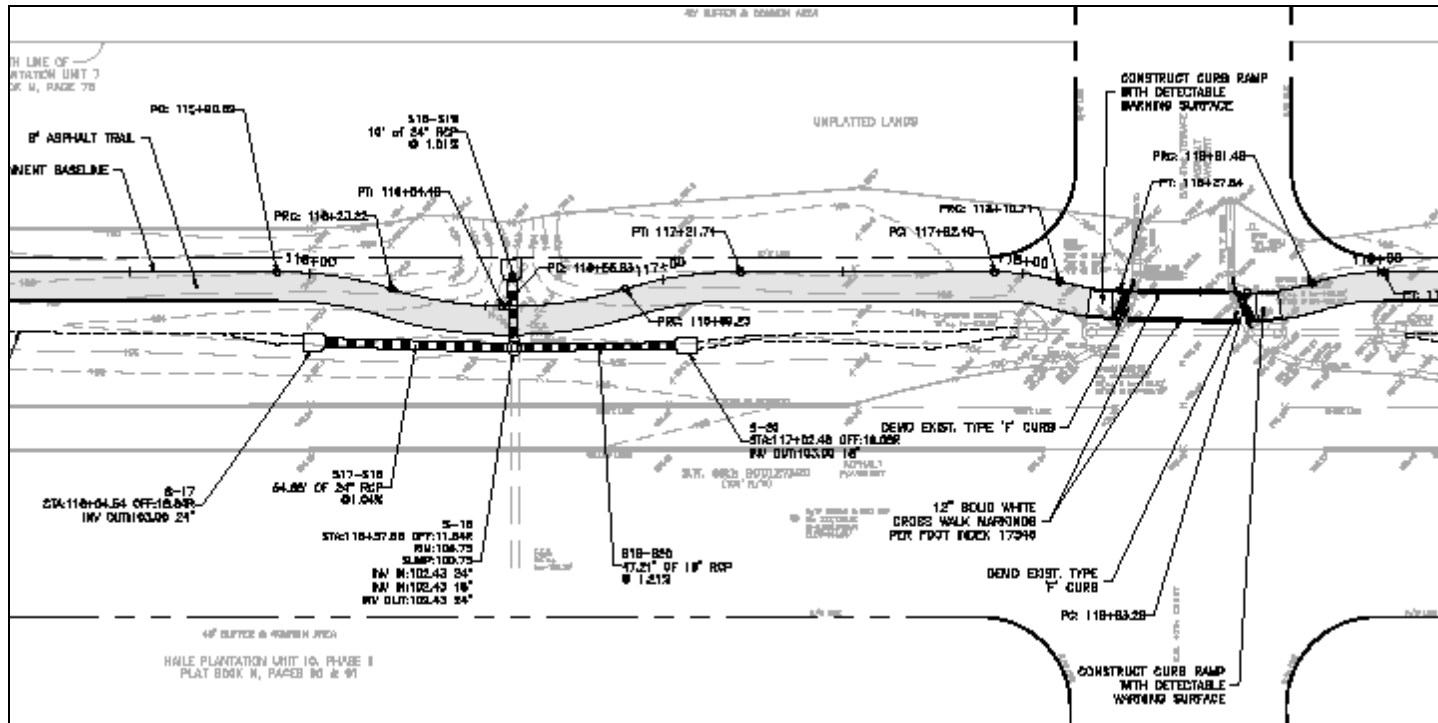
# Deviation from the R/W – SW 46<sup>th</sup> Blvd.

- ▶ SW 81<sup>st</sup> Terrace and Ditch Crossing
- ▶ Beyond Stop Bar
- ▶ Increase Visibility



# Deviation from the R/W – SW 46<sup>th</sup> Blvd.

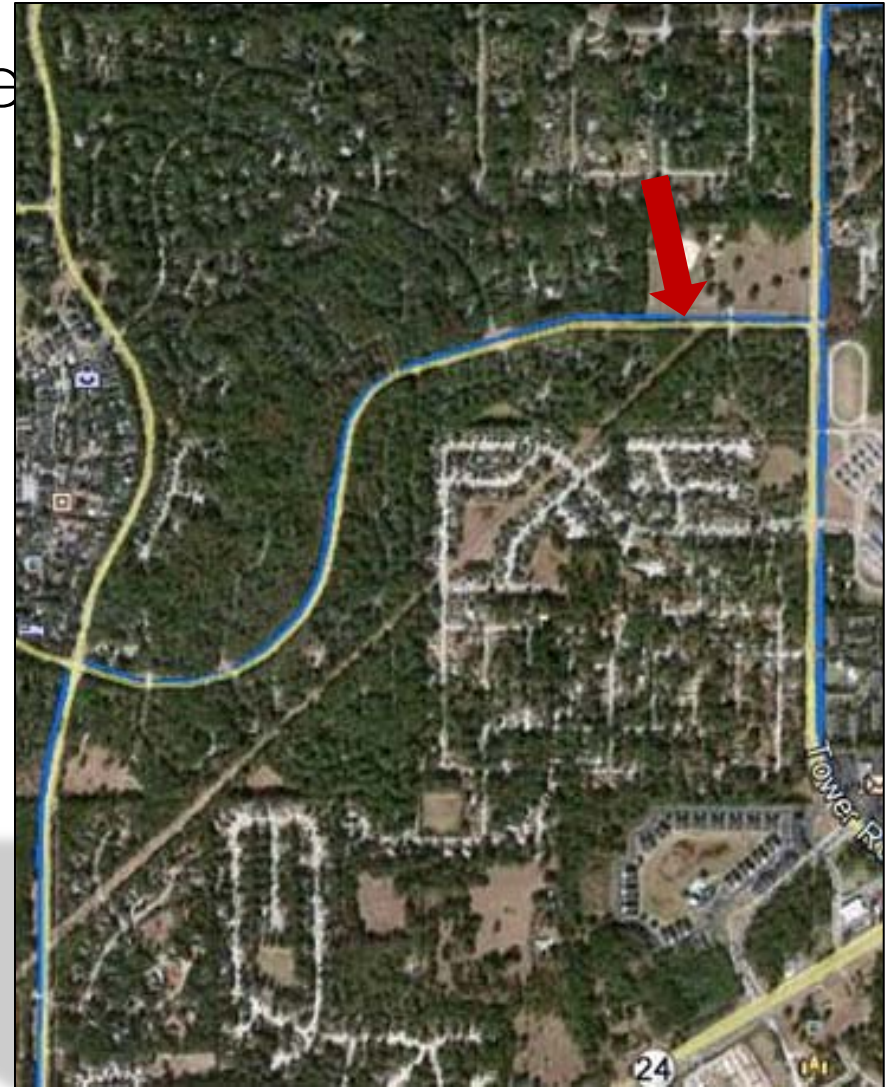
▶ SW 81<sup>st</sup> Terrace





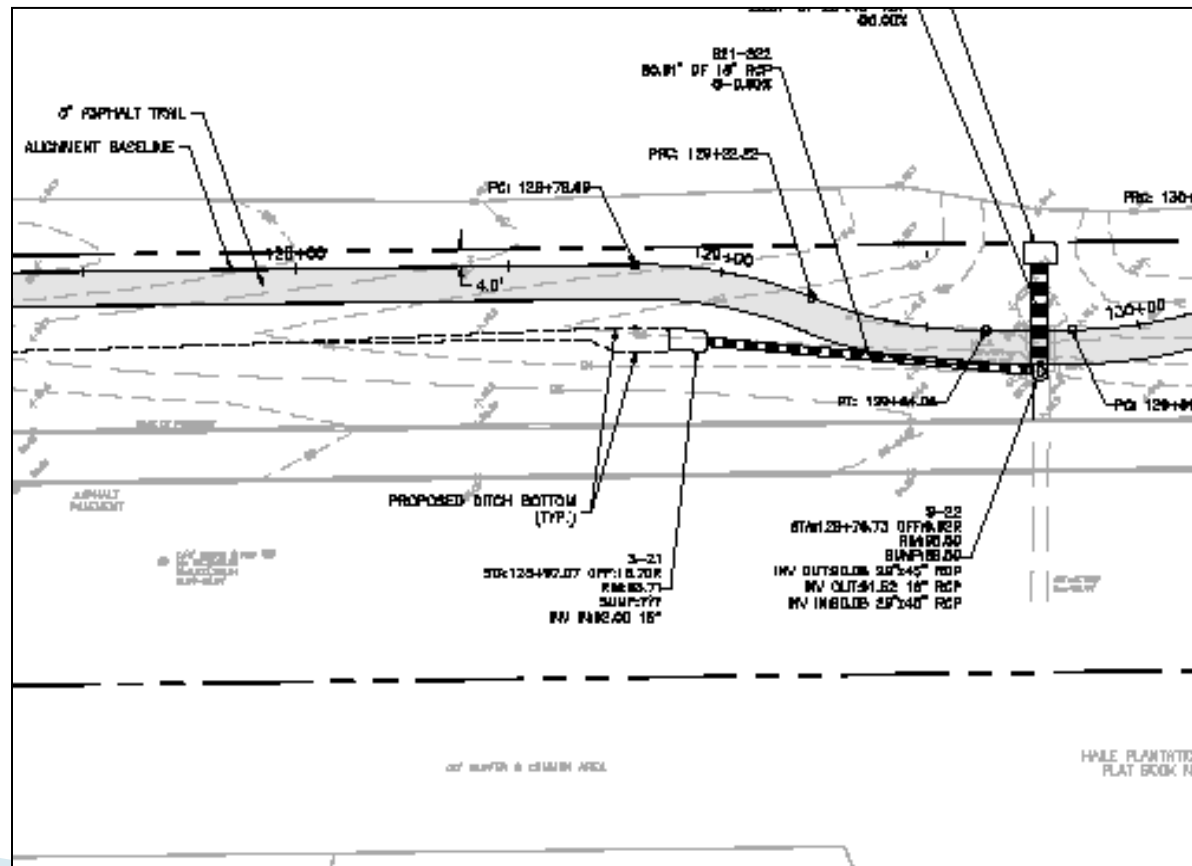
# Deviation from the R/W – SW 46<sup>th</sup> Blvd.

- ▶ Ditch Crossing at Pasture
- ▶ No Need for Handrail



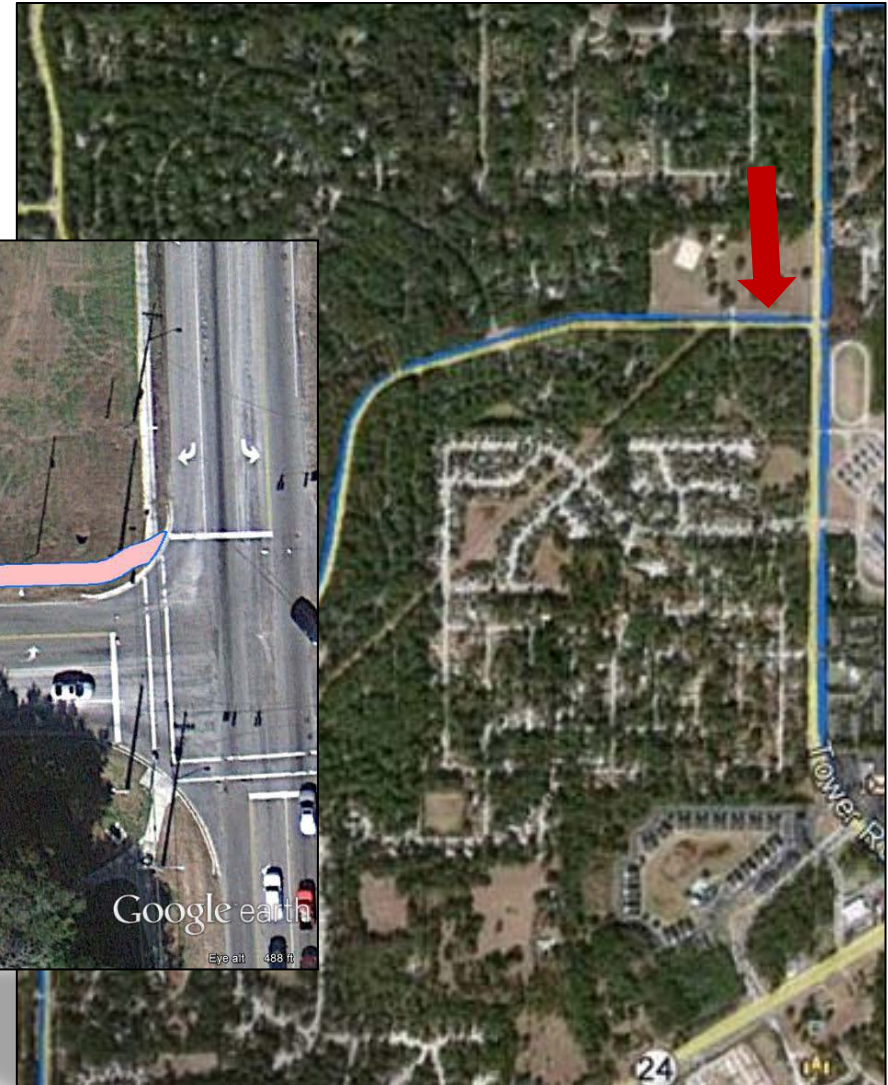
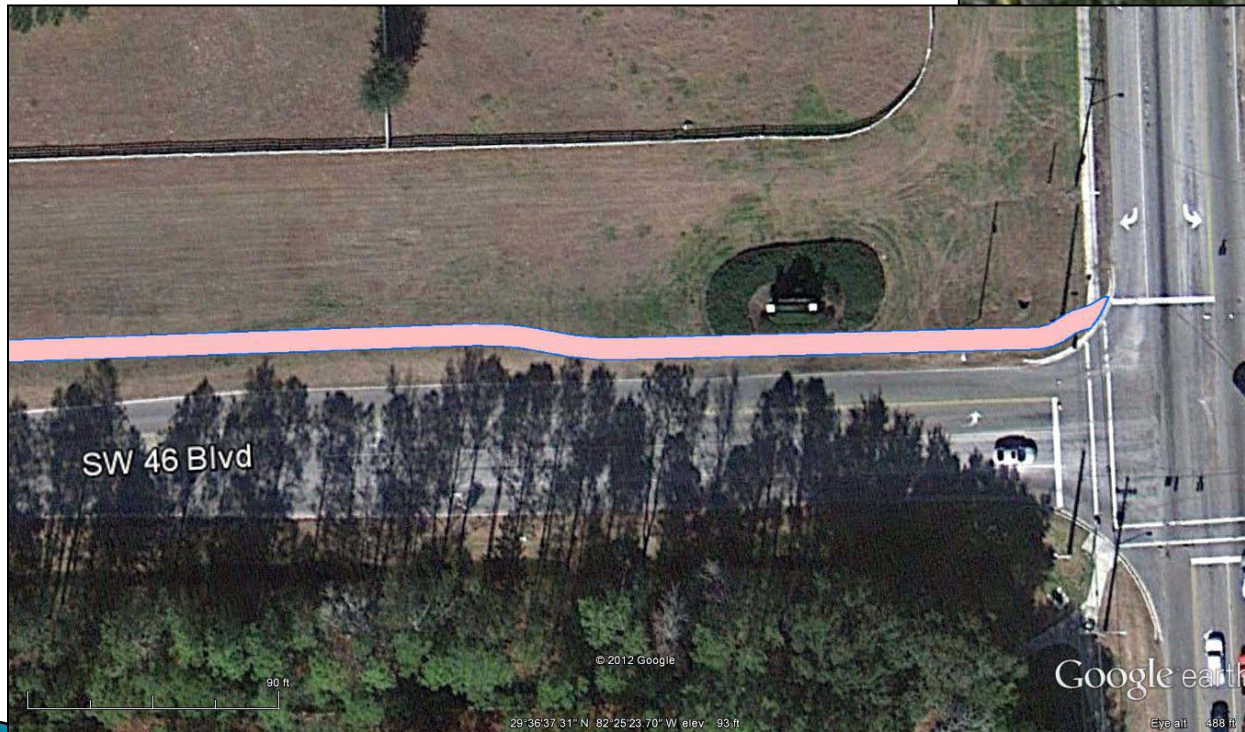
# Deviation from the R/W – SW 46<sup>th</sup> Blvd

## ► Ditch Crossing



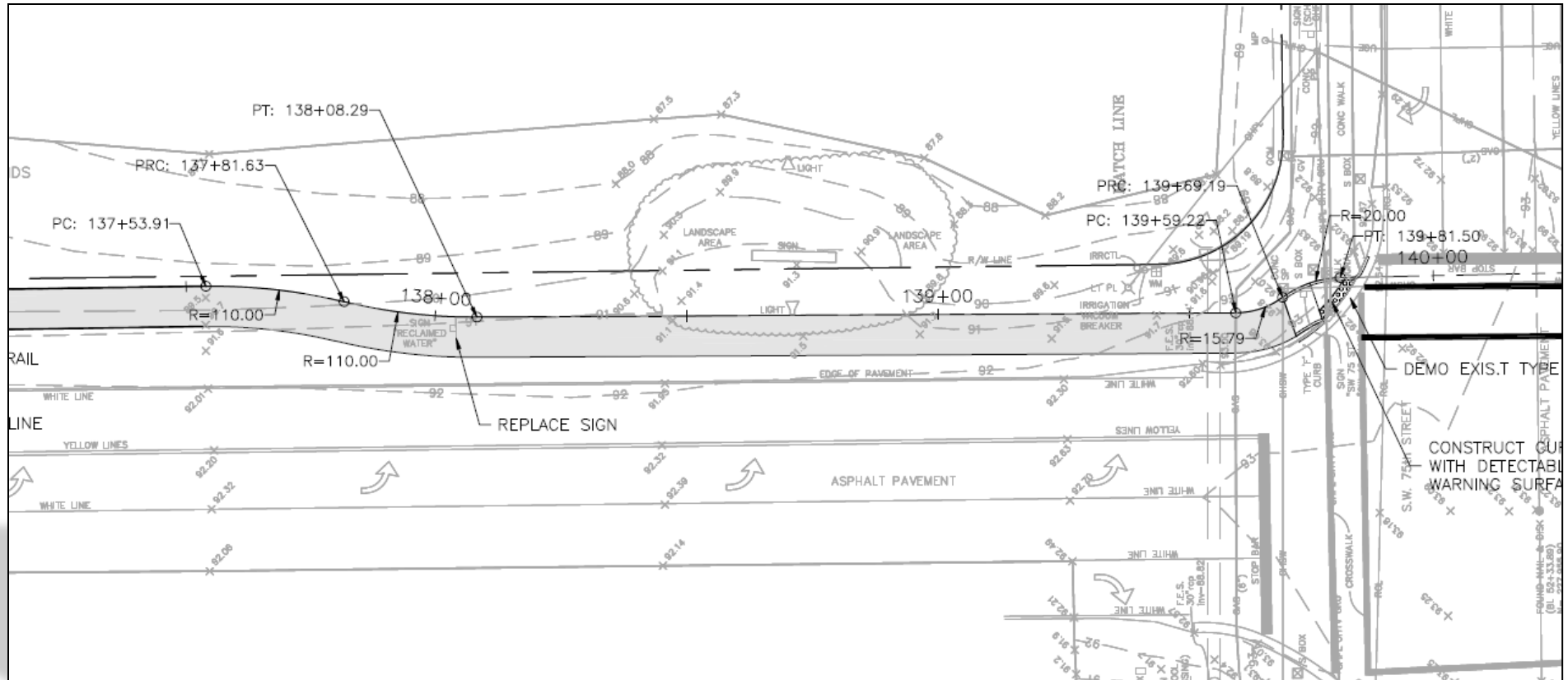
# Deviation from the R/W – SW 46<sup>th</sup> Blvd.

- ▶ Tower Road Intersection
- ▶ Haile Plantation Signage



# Deviation from the R/W – SW 46<sup>th</sup> Blvd.

## ► Tower Road Intersection



# SW 75<sup>th</sup> Street and SW 41<sup>st</sup> Place Segments

Archer Road to Kanapaha Park



# Existing Conditions – SW 75<sup>th</sup> Street

- ▶ Right-of-Way Varies From 110' to 167'
- ▶ 5' Sidewalks Within Right-of-Way
- ▶ Drainage Swales Both Sides Except @ Archer Rd.
- ▶ Urbanized With Minimal Vegetation And Trees
- ▶ Major Utilities

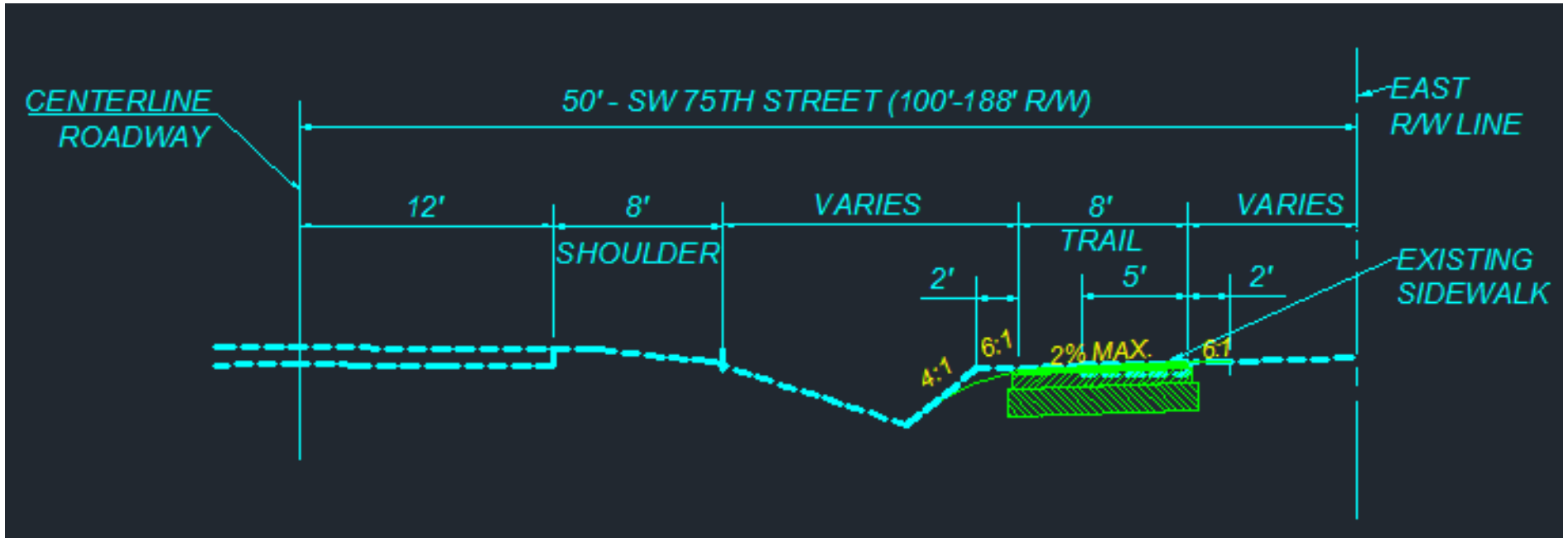


# Proposed Alignment – SW 75<sup>st</sup> Street

- ▶ Trail To Be Located On East Side of Roadway
- ▶ East Side Of Trail Coincides With Existing Sidewalk
- ▶ Exceptions:
  - Kimball Elementary School/Outside R/W/At Existing Sidewalk Edge
  - Beyond Stop Bar At Intersections

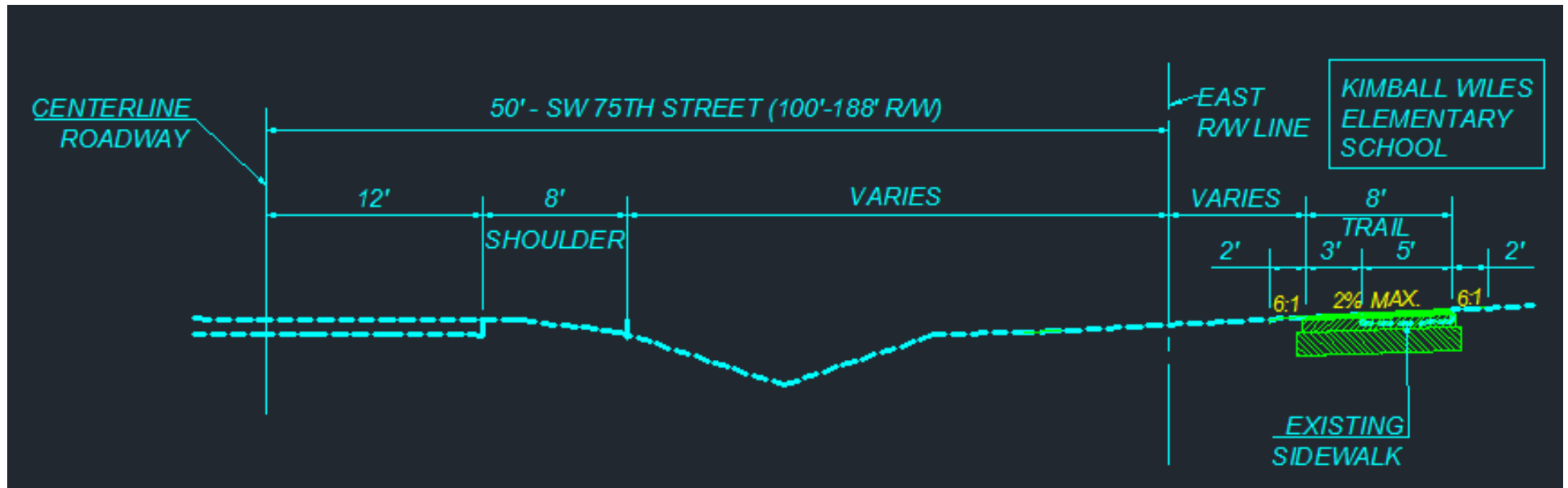


# Proposed Typical 1 – SW 75<sup>th</sup> Street





# Proposed Typical 2 – SW 75<sup>th</sup> Street



# Existing Conditions – SW 41<sup>st</sup> Place

- ▶ 80' Right-of-Way
- ▶ No Sidewalks or Trails Within Right-of-Way
- ▶ Poorly Defined Drainage Swales
- ▶ FEMA 100 Year Flood Plain
- ▶ Vegetation and Trees to Back of Swale
- ▶ Minimal Horizontal and Vertical Geometry Change
- ▶ Minor Utilities

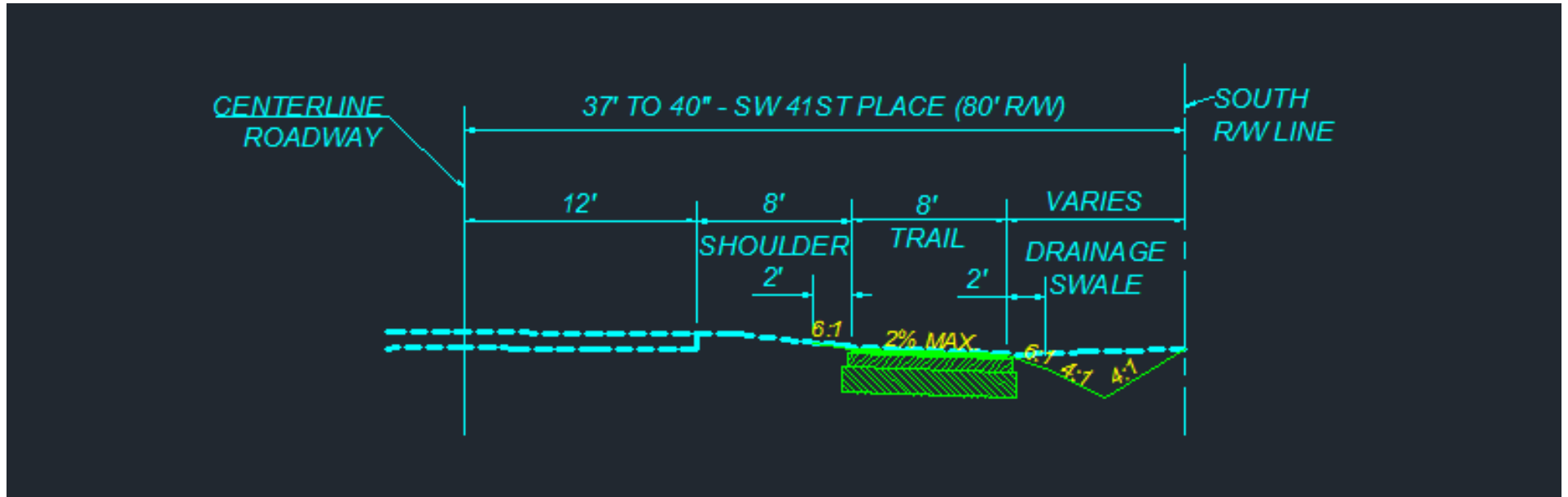


# Proposed Alignment – SW 41<sup>st</sup> Place

- ▶ Trail To Be Located On South Side Of Roadway
- ▶ Trail Located Along South Right-of-Way Line
- ▶ Exceptions:
  - Near SW 75st Intersection
  - Beyond Stop Bar At Intersections



# Proposed Typical – SW 41<sup>st</sup> Place



# Project Schedule

- ▶ February 4<sup>th</sup> – Metropolitan Transportation Planning Organization
- ▶ March 2013 – Final Plans to FDOT
- ▶ April 2013 – Bidding
- ▶ Fall 2013 - Construction



# Questions

Archer Braid Trail

