

Suncoast Connector Task Force Meeting #2

October 23, 2019

College of Central Florida Citrus Learning & Conference Center
3800 South Lecanto Highway, Lecanto, Florida 34461

Objectives

- Provide overview of Florida's Government in the Sunshine Law
- Introduce approach of identifying Avoidance, Minimization, Mitigation, and Enhancement (AMME) considerations
- Discuss avoidance and minimization considerations for developing corridor opportunities
- Discuss potential guiding principles for avoidance and minimization
- Receive public comment
- Identify next steps in preparation for Task Force meeting #3

9:00 am	Registration	
10:00 am	Welcome	Greg Evans, Task Force Chair
10:05 am	Roll Call and Safety Briefing	Hal Beardall & Rafael Montalvo, Facilitators
10:15 am	Government in the Sunshine Law – Video Refresher	David Flynn, Office of the Attorney General
10:30 am	Task Force Meeting #1 Recap and Meeting #2 Objectives	Hal Beardall & Rafael Montalvo, Facilitators
10:50 am	Overview of Public Comments Summary	Ryan Asmus, FDOT Production Lead
11:00 am	Task Force Members Comments Summary	JoAnna Hand, FDOT Project Manager
11:10 am	GIS Interactive Mapping Tool using data layers within Study Area – DEMO	Brian Brooker, FDOT Project Manager
11:30 am	Overview of AMME Considerations including Examples from Prior Corridor Development Initiatives	Huiwei Shen, FDOT Chief Planner
12:00 pm	***Lunch*** on your own	
1:30 pm	Overview of Avoidance and Minimization Considerations Presentation	Ryan Asmus, FDOT Production Lead
1:50 pm	Avoidance and Minimization Considerations Discussion	Hal Beardall & Rafael Montalvo, Facilitators & TF Members
3:00 pm	Break	
3:15 pm	Guiding Principles for Avoidance and Minimization	Hal Beardall & Rafael Montalvo, Facilitators & TF Members
4:15 pm	Next Steps	Greg Evans, Task Force Chair Hal Beardall & Rafael Montalvo, Facilitators
4:30 pm	Public Comment	Greg Evans, Task Force Chair Hal Beardall & Rafael Montalvo, Facilitators
TBD	Adjourn	Greg Evans, Task Force Chair

Public participation is solicited without regard to race, color, national origin, age, sex, religion, disability, or family status. People who require special accommodations under the Americans with Disabilities Act or who require translation services (free of charge) should contact Angela Starke at Angela.Starke@dot.state.fl.us or (407)264-3321 at least seven (7) days prior to the meeting. If you are hearing or speech impaired, please contact the agency using the Florida Relay Service, 1(800)955-8771 (TDD) or 1(800)955-8770 (Voice).



Suncoast Connector Task Force Meeting #2

Roll Call and Safety Briefing



October 23, 2019



State Agencies Involved Within the Study Area

- **Greg Evans - Chair**, Department of Transportation
- **Jason Peters - Vice Chair**, Department of Transportation
- **Chris Stahl**, Department of Environmental Protection
- **Brian McManus**, Department of Economic Opportunity
- **Mary Cross**, Department of Education
- **Paul D. Myers**, Department of Health
- **Chris Wynn**, Fish and Wildlife Conservation Commission
- **The Honorable Pegeen Hanrahan**, Department of Agriculture and Consumer Services
- **Mark Futrell**, Florida Public Service Commission
- **Tim Vanderhoof**, Enterprise Florida
- **Chris Lee**, Department of Business and Professional Regulation
- **Diane Head**, CareerSource Florida
- **Audrey Kidwell**, Volunteer Florida



Local Government Officials

- **Scott Carnahan**, Citrus County
- **The Honorable Mark Hatch**, Dixie County
- **The Honorable Todd Gray**, Gilchrist County
- **The Honorable Betsy Barfield**, Jefferson County
- **The Honorable Anthony Adams**, Lafayette County
- **The Honorable Matt Brooks**, Levy County
- **Brian Kauffman**, Madison County
- **The Honorable Pam Feagle**, Taylor County



Metropolitan Planning Organizations

- **The Honorable Kristin Dozier**, Capital Region TPA
- **The Honorable Jeff Kinnard**, Hernando /Citrus MPO

Regional Planning Councils

- **The Honorable Ronald E. Kitchen, Jr.**, Tampa Bay RPC
- **Chris Rietow**, Apalachee RPC
- **Scott Koons**, North Central Florida RPC





Environmental Groups & WMDs Involved Within the Study Area

Environmental Groups

Thomas Hawkins, 1000 Friends of Florida

Charles Lee, Audubon Florida

Kent Wimmer, Defenders of Wildlife

Janet Bowman, The Nature Conservancy

Local Water Management Districts

Lyle Seigler, Northwest Florida WMD

Steve Minnis, Suwannee River WMD

Michelle Hopkins, Southwest Florida WMD





Community & Non-Profits Involved Within the Study Area

Community Individual or Member of Non-Profit Organization

Christopher Emmanuel, Florida Chamber of Commerce

Ken Armstrong, Florida Trucking Association

Randy Wilkerson, Florida Rural Water Association

Chris Bailey, Florida Internet and Television Association

Susan Ramsey, Florida Economic Development Council

Charles Shinn, Florida Farm Bureau

John Grosskopf, North Florida Community College

Dr. Lawrence Barrett, Florida Gateway College



**FLORIDA GATEWAY
COLLEGE**



The industry that connects and entertains.



- Location address:
College of Central Florida Citrus Learning and Conference Center
3800 S. Lecanto Highway
Lecanto, FL 34461
Phone: 352-746-6721
- Hal Beardall will dial 9-1-1, notify front desk, and meet emergency responders; Chairman Evans will be the backup person
- Who is CPR Certified?
- Review Emergency Evacuation map posted in common area
- Does anyone need assistance evacuating the building?
- Staging area will be outside the main entrance; Hal Beardall will perform roll-call
- Please place all cell phones on silence or vibrate mode



Meeting 1 Recap & Meeting 2 Objectives

Task Force Meeting #2



October 2019

Morning: Plenary Session (All 3 M-CORES Task Forces)

- Welcome and Charge (Secretary Thibault, Senator Galvano)
- Government in Sunshine & Public Records Laws
- M-CORES Overview
- Corridor Planning & Development Overview
- Task Force Products, Work Plan, & Roles

Afternoon: Task Force Meeting

- Introductions
- Task Force Work Plan and Engagement Plan
- Study Area Overview
- Initial Discussion of Study Area Considerations
- Next Steps
- Public Comment

Meeting 1

August 2019

- Overview
- Work Plan

Meetings 2, 3

October, December 2019

- Identify Avoidance and Minimization Considerations
- Develop Guiding Principles
- Review Initial Corridor Opportunities

Meetings 4, 5

March, June 2020

- Identify Mitigation and Enhancement Considerations
- Refine Guiding Principles
- Review Potential Corridor Opportunities; Discuss Implementation Actions

Meetings 6, 7

August, September 2020

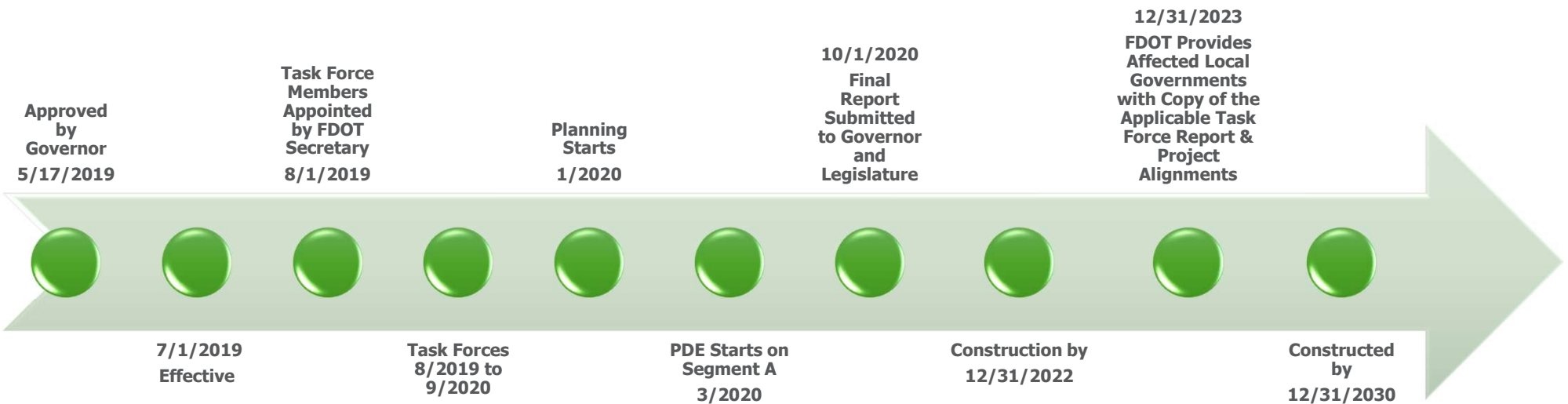
- Receive Public Comment on Draft Recommendations
- Develop Draft Final Report
- Adopt Final Report

- **Meeting agenda** with specific desired outcomes
- **Facilitated discussion**; no formal parliamentary procedures
- **Collaborative recommendations**
- **Documentation** of action items and assignments
- **“Parking lot”** for issues needing more information, further discussion, or resolution in a later process
- **Summary** of each Task Force meeting

- **Introduce** and **clarify** the opportunity
- **Explore** the opportunities, **collect** and **discuss** ideas for corridor considerations
- **Develop** proposals to explore corridor considerations that address public and stakeholder concerns, as feasible
- **Make** initial recommendations
- **Discuss, clarify, and amend** as needed

- Recommendations will be adopted at the **final meeting**
- The Task Force will strive for **consensus on the recommendations as a package to be included in the final report**
- Consensus will be defined and documented as **members being able to support, accept, live with, or agree not to oppose** the package of recommendations for the final report
- The **final report** will be submitted following the conclusion of the last Task Force meeting

- **Share responsibility** for the process and the outcome
- Encourage **honest and free** discussion
- **Direct comments** to the facilitator
- **Be courteous**
- Speak **one at a time**
- Keep comments **concise**
- **Speak to be understood**
- **Ask to understand**
- **Listen actively**
- Use **tent card** to indicate desire to comment



Project construction in any corridor is not eligible for funding until submission of the final report of the corridor task force for that corridor and completion of 30 percent of the design phase of any project within a corridor, except for project phases that are under construction or for which project alignment has been determined.

- **Public Comment Stations and Public Comment Period** at every Task Force meeting
- **Community Open Houses** in each corridor (October, December, March, June)
- **Community Workshops** in each corridor (January/February & April/May)
- **Public Comment Period** on draft recommendations (July)
- **Briefings** to regional and local partner organizations
- **Communication 24/7** through website, email, telephone

- Provide overview of Florida's **Government in the Sunshine Law**
- Introduce approach of identifying **Avoidance, Minimization, Mitigation, and Enhancement (AMME)** considerations
- Discuss **avoidance and minimization considerations** for developing corridor opportunities
- Discuss **guiding principles** for avoidance and minimization
- Receive **public comment**
- Identify **next steps** in preparation for Task Force meeting #3

- Summary of Public Comments
- Summary of Task Force Members Meeting 1 Comments
- GIS Interactive Mapping Tool
- Introduction to Avoidance, Minimization, Mitigation, Enhancement Considerations
- *Lunch – on your own*
- Avoidance and Minimization Considerations
 - Presentation
 - Discussion
 - Potential Guiding Principles
- Next Steps
- Public Comment – **4:30 p.m. start**



m·cores

MULTI-USE CORRIDORS OF REGIONAL ECONOMIC SIGNIFICANCE

FloridaMCORES.com



Suncoast Connector Task Force Meeting #2

Overview of Public Comments Summary



October 23, 2019

Your Voice Is Important

Input Summary



Public Comment for all Task Forces

E-newsletter subscribers <i>(total of all three e-newsletters)</i>	2,699
---	-------

Website visitors (people visiting the site)	13,379
---	--------

Page views	46,871
------------	--------

Public Comments

FDOT.Listens email address	1,440
----------------------------	-------

FloridaMCORES.com comment form	202
--------------------------------	-----

Aug. 27 Public Meeting	151
------------------------	-----

Numbers represent Aug. 1 – Oct. 6

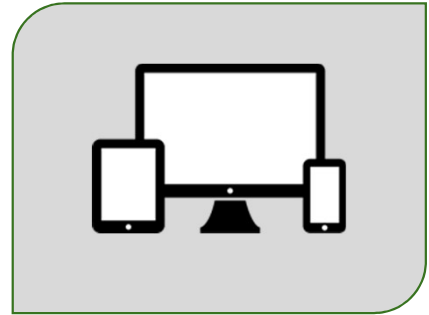


☐ Website: www.FloridaMCORES.com

☐ Court Reporter

☐ Written Comments at Meeting

☐ Public Comment Period
(Concluding Task Force meeting)





Q: Can FDOT widen existing roads, like U.S. 19, through the Northern Turnpike and Suncoast Connectors instead of building new roads?

A: During planning and project development and environmental study (PD&E), all options will be considered, including building new multi-use corridors or improving existing corridors.



Q: Will FDOT develop transit along already established roads that will help low-income workers get to and from their places of employment; and begin major planning of low-income housing in areas where walking to a bus stop is less than a mile in safe, well-paved, well-lit areas?

A: The M-CORES study task forces will make recommendations regarding mobility opportunities within the multi-use corridors.



Q: Is M-CORES necessary to expand services like broadband/water/sewer services into rural areas?

A: The task forces will evaluate the needs of all communities within the study area, and provide potential solutions for shortcomings in those areas. The production team will evaluate the potential solutions, and proactively plan to accommodate for the current and future requirements.



Q: Isn't M-CORES about benefiting a few wealthy individuals (landowners, developers, construction companies)?

A: The task force is charged with holistically looking at the current and future needs of the corridor and providing recommendations on opportunities for enhancements to benefit the communities as a whole, to achieve the purpose of the program. Ultimately, the purpose of M-CORES is to revitalize rural communities, encourage job creation, and provide regional connectivity.



Q: How will you prevent the promise of economic opportunity and protection of our natural resources from becoming a nightmare of over-development and unbridled traffic?

A: The task force is composed of a broad cross section of stakeholders. The task force members are charged with evaluating the study area from their respective expertise and providing recommendations on how the M-CORES program can Avoid, Minimize, Mitigate and Enhance to address those concerns in each community.



Q: Does FDOT believe this program will provide the necessary infrastructure to safely and effectively evacuate Floridians during emergency events?

A: Along with recommendations from the task forces, the FDOT production team will use our standard evaluation process to determine potential solutions to safely and effectively evacuating citizens and visitors in the State of Florida when an emergency event arises.



Q: What is being done to address Florida's crumbling existing infrastructure, which is ranked 40th nationwide in overall cost-effectiveness and condition?

A: Florida must maintain existing state transportation facilities to a level of acceptable standards before adding capacity. Florida has been ranked one of the highest for condition of existing roadways and bridges in the nation.



Q: How will M-CORES address the added threat of climate change, that will affect future generations?

A: M-CORES corridors will be designed for resiliency. This includes hurricane, flooding, and rising sea level resiliency.



Q: How will FDOT and M-CORES address the high price the environment will pay due to new roadways and possible sprawl, including damage to wetlands, rivers and springs, and wildlife corridors?

A: The M-CORES program charges the task force to consider and recommend innovative concepts to combine right-of-way acquisition with the acquisition of lands or easements to facilitate environmental mitigation; or ecosystem, wildlife habitat, or water quality protection or restoration.



Q: Why won't Florida spend the M-CORES money on purchasing more preservation/conservation lands instead?

A: The M-CORES program charges the task force to consider and recommend innovative concepts to combine right-of-way acquisition with the acquisition of lands or easements to facilitate environmental mitigation; or ecosystem, wildlife habitat, or water quality protection or restoration — in order to Avoid, Minimize, Mitigate and Enhance the corridor.



Q: Won't a new toll road lead to urban sprawl and environmental impacts?

A: The task force is charged with holistically looking at the current and future needs of the corridor. One anticipated outcome is recommendations on opportunities to enhance and benefit the communities as a whole, to achieve the purpose of the program while avoiding, minimizing and mitigating where feasible.



Q: Why don't you build more hurricane shelters rather than evacuation routes?

A: Along with recommendations from the task forces, the FDOT production team will use our standard planning and PD&E evaluation process to determine potential solutions to safely and effectively evacuating citizens and visitors in the State of Florida, when an emergency event arises.



Old Town Education Center

823 SE Highway 349

Old Town, FL

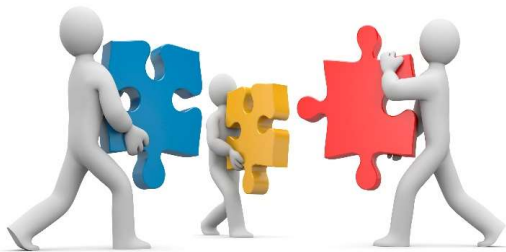
October 24, 2019 (5:30 PM – 7:30 PM)

- ☐ Informal meeting (no live presentation)
- ☐ Looping video presentation
- ☐ Display boards and visuals
- ☐ Project staff to answer questions
- ☐ Comment cards, speak to Court Reporter, or submit online comments on provided laptop



TASK FORCE ENGAGEMENT

- ☐ Task Force Meetings
- ☐ Community Open House Meetings
- ☐ Community Workshops
- ☐ Website: www.FloridaMCORES.com
- ☐ Press Releases



PROJECT DEVELOPMENT & ENVIRONMENT (PD&E) ENGAGEMENT

- ☐ Public Information Meetings
- ☐ Open Houses
- ☐ Website: www.FloridaMCORES.com
- ☐ Press Releases
- ☐ Public Involvement



- **October 24, 2019**
Suncoast Connector Community Open House
Old Town Education Center
823 SE Highway 349, Old Town, FL (5:30 PM – 7:30 PM)
- **December 17, 2019**
Suncoast Connector Task Force Meeting #3
Taylor County-IFAS Auditorium
203 Forest Park Dr., Perry, FL 32348
- **December 19, 2019**
Suncoast Connector Community Open House
Lafayette County-Alton Family Life Center
2365 East US 27, Mayo, FL 32066
- **January & February 2020:** Workshops and Engagement Sessions



Suncoast Connector Task Force Meeting #2

Task Force Members Comments Summary



October 23, 2019

m·c o r e s



- **Alleviate** congestion
- **Support** multiple modes of transportation (shared-use trails, freight and passenger rail, public transit)



- **Connect** rural communities
- **Expand** broadband service



- **Create** jobs
- **Advance** trade and logistics



- **Improve** energy distribution
- **Build** water, sewer and other infrastructure



- **Conserve** wildlife
- **Protect** environmentally sensitive areas



- **Provide** hurricane evacuation routes
- **Enhance** public safety



Alleviate & Support

Capacity

- Existing roads
- Travel demands
- Inflow/Outflow of traffic
- Congestion

Multi-Modal System

- Public transit options
 - Commuter rail systems
 - Bus networks
- Shared-use paths
- Trail network
- Freight trade & logistics
 - Freight rail system
 - Truck only lanes
 - Ports

Accessibility

- Roadway transportation classification analysis
- Access management techniques
- Balance state & individual needs
- Affordability
- Efficiency
- Quality of travel
- Travel options



**Connect
&
Expand**

Interchanges

- Best practices & policies
- By-passes
- Existing infrastructure
 - Feeder roads
 - Businesses
 - Shared use paths/trails
- Innovative designs
- Exits

Broadband

- Availability
- Expanding service options
- Tie-in with the corridor

Destinations

- Education
- Businesses
- Jobs
- Communities
- Essential services
- Land resources
- Major markets
 - Local & regional



**Create
&
Advance**

Economy

- Economic Development
 - Zoning
 - Diversify economics
 - Job creation
 - Preserve current economic activity
- Development as a region
- Planned development
- Future of our children
- Impacts to adjacent counties
- Connectivity
- Proactive approach

Right of Way

- Land acquisition
 - Joint agreements
 - Conservation lands
 - Environmental lands
 - Florida Forever lands
- Co-location of utilities
 - Water
 - Sewer
 - Transmissions
 - Gas
 - Broadband

Innovation

- Interchange management
- Multi modal transportation network



**Create
&
Advance**

Workforce Development

- Manufacturing jobs
- Toll jobs
- Industrial
- Construction
- Emerging markets
- Connecting with local communities – inland ports, rail spurs
- Partnering with schools & vocational rehabilitation

Improving Quality of Life

- Protecting current history
- Revitalize rural communities
- Accessibility
- Public safety

Emerging Technology

- Charging stations
- Smart roads
 - Amber alerts
- High tech communication abilities to prepare for future technology & transportation
 - Autonomous vehicles
 - Connected vehicles
 - Electric vehicles



**Improve
&
Build**

Cost

- Suncoast Parkway
- Driver projections
- Toll revenue
- Construction
- Long term maintenance
- Long Range Transportation Plan

Traffic

- Truck traffic volume (toll vs. free)
- Commuter traffic
- First responders
- Evacuation routes
- Bottlenecks
- Emergency Management

Infrastructure

- Water and sewer
- Utilities
- Pipelines
- Transmission lines
- Maintenance
- Existing roads
- Connectivity options
- Accommodate current & future growth
- Access Management
- Regional evacuation



**Conserve
&
Protect**

Land

- Public
- Private
- Commercial
- Agricultural
- Forestry
- Existing resources
- Land use
 - Policy recommendations
 - Best practices
- Sensitive lands
- Conservation
 - Easements
- Preservation
 - Protected resource values
 - Protecting natural resources
 - Protecting farmland areas
- History
- Eco-tourism
- Community & culture



**Conserve
&
Protect**

Water

- Resources
- Freshwater flows
- Smaller streams that depend on water quality & flow from upland areas
- Hydrology
- Restoring flows
- Sea-level rise
- Flooding & storm surge areas
- Ecological future
- Aquifer recharge

Wildlife

- Re-establish wildlife corridors
- Florida wildlife map
- Protection
- Elevating roadways
- Greenways
- Crossings



**Provide
&
Enhance**

Hurricane Evacuation

- Shelters available
- Flood areas
- Storm surge areas
- Statewide/Regional evacuation plan
 - Routes
 - Roads used
- Evacuation behavior
 - People within the counties who evacuated & did not evacuate
 - People who go to a shelter vs. evacuating
- Availability of resources before & after
- Equity

Public Safety

- First Responders
- Hospitals & healthcare facilities
- Tele-health
- Emergency care
- Crashes
- Services available

Suncoast Parkway 2

Phase 1:

- From US 98 to SR 44
- Currently Under Construction
- Estimated Completion 2022

Phase 2:

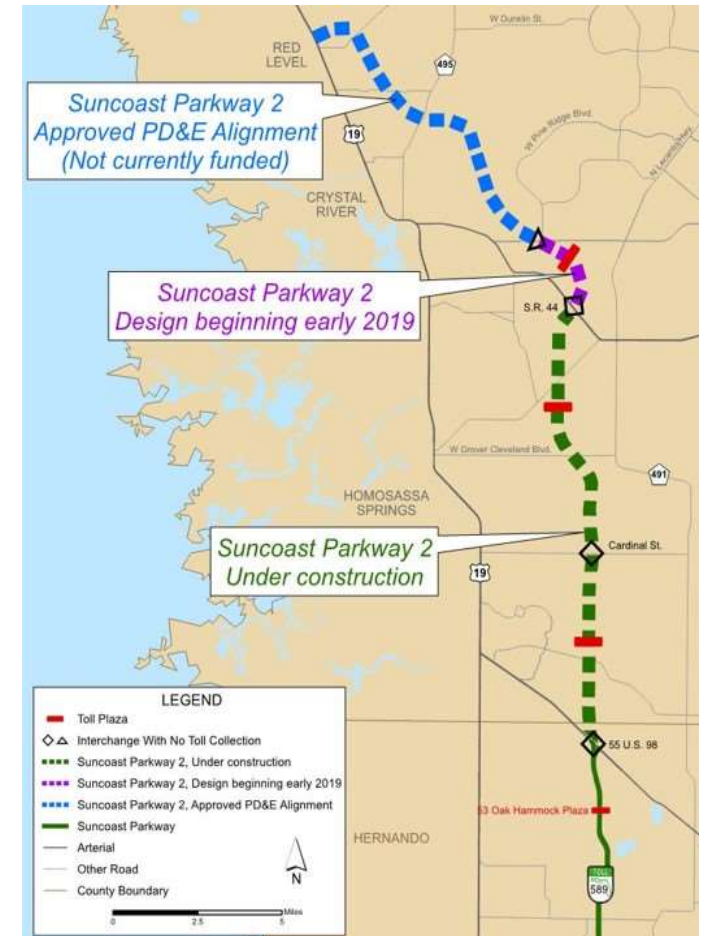
- From SR 44 to CR 486
- Re-evaluation & Design Underway
- Project Letting Scheduled September 2022

Phase 3:

- From CR 486 to US 19
- PD&E Complete & Alignment Optimization Update
- No Letting Date Currently Planned

US 19 (SR 55)

- Corridor Study and Action Plan (1988 - 1998)





FloridaMCORES.com



Suncoast Connector Task Force Meeting #2

GIS Interactive Mapping Tool Demonstration



October 23, 2019



Accessing the Mapping Tool

➤ Website: www.FloridaMCORES.com

(Preferred Web Browser: Chrome or Firefox)



Florida Department of
TRANSPORTATION

E-Updates | FL511 | Site Map

Search FDOT...

Home About FDOT Contact Us Maps & Data Offices Performance Projects



About ▼

Interactive Map ▼

Task Forces ▼

Stay Informed ▼

FAQs

Contact Us



Study Area Map

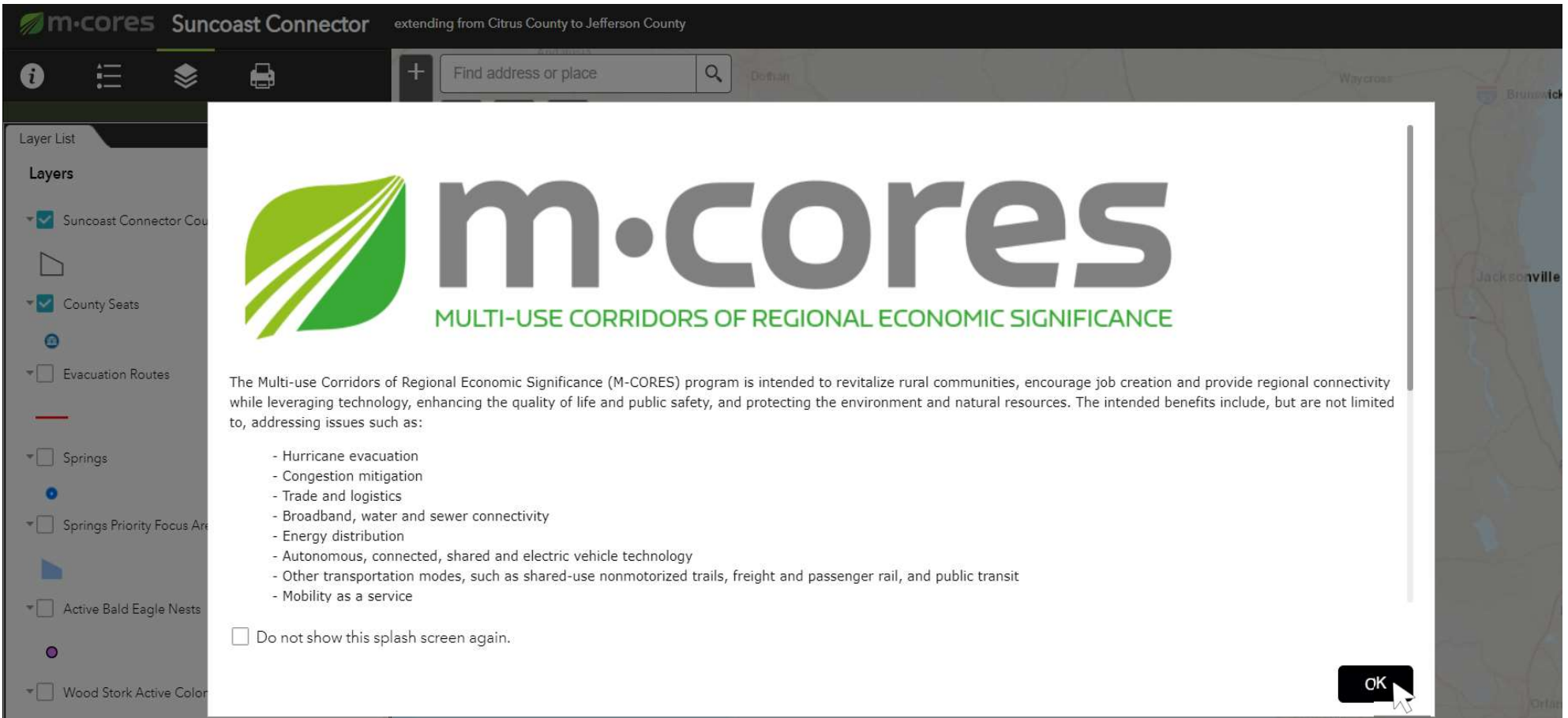
GIS MAPPING TOOLS

Suncoast Connector

Northern Turnpike Connector

Southwest-Central Florida Connector

Multi-Use Corridors
Of Regional Economic Significance



The screenshot shows a web browser displaying the m·cores Suncoast Connector landing page. The page title is "Suncoast Connector" with a subtitle "extending from Citrus County to Jefferson County". The main content area features the m·cores logo and the text "MULTI-USE CORRIDORS OF REGIONAL ECONOMIC SIGNIFICANCE". Below this, a paragraph describes the program's intent to revitalize rural communities, encourage job creation, and provide regional connectivity. A list of intended benefits is provided, including hurricane evacuation, congestion mitigation, trade and logistics, broadband, water and sewer connectivity, energy distribution, autonomous, connected, shared and electric vehicle technology, other transportation modes, and mobility as a service. A checkbox option "Do not show this splash screen again." is visible. An "OK" button is located in the bottom right corner of the splash screen. The background shows a map interface with a layer list on the left and a search bar at the top.

m·cores Suncoast Connector extending from Citrus County to Jefferson County

Find address or place

Layer List

Layers

- ☒ Suncoast Connector Corridor
- ☒ County Seats
- ☐ Evacuation Routes
- ☐ Springs
- ☐ Springs Priority Focus Area
- ☐ Active Bald Eagle Nests
- ☐ Wood Stork Active Colonies

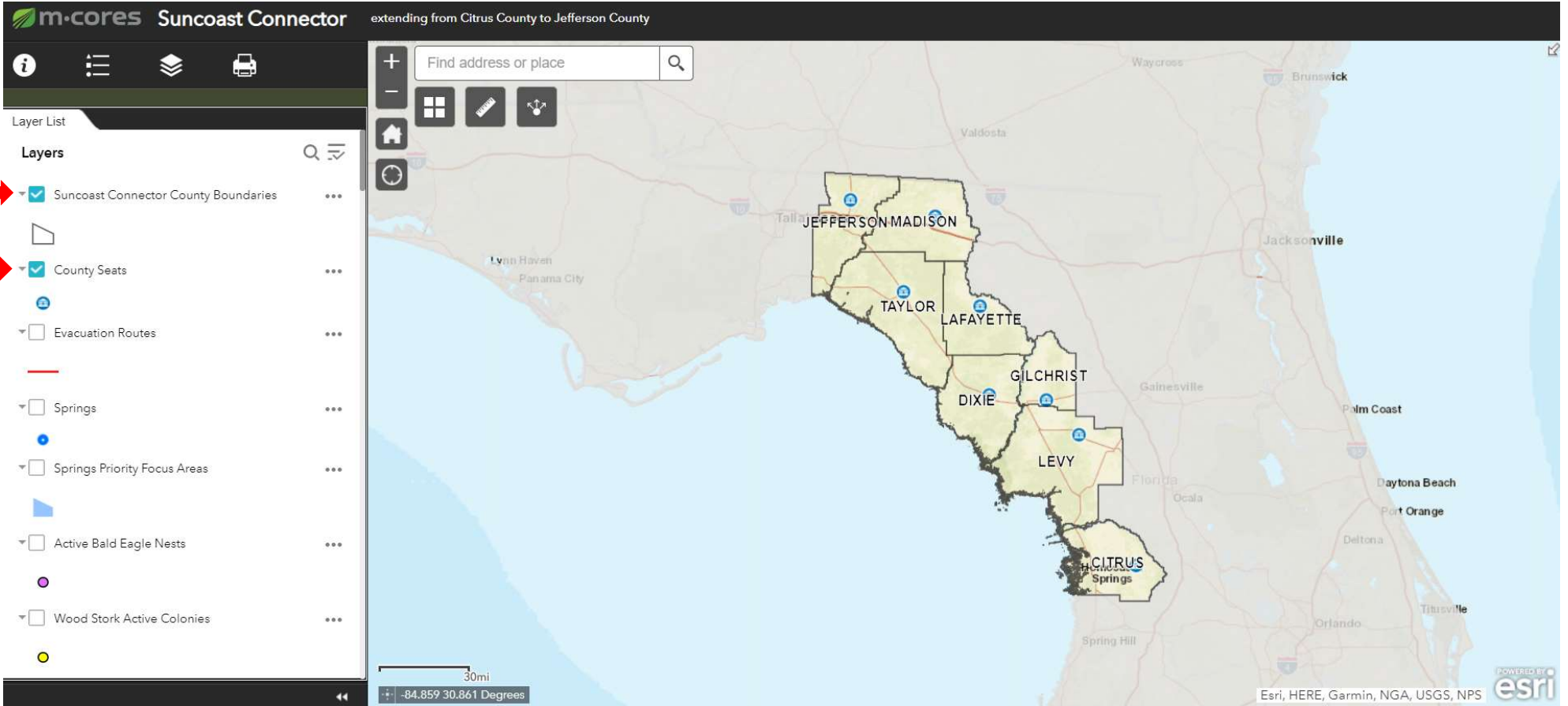
m·cores
MULTI-USE CORRIDORS OF REGIONAL ECONOMIC SIGNIFICANCE

The Multi-use Corridors of Regional Economic Significance (M-CORES) program is intended to revitalize rural communities, encourage job creation and provide regional connectivity while leveraging technology, enhancing the quality of life and public safety, and protecting the environment and natural resources. The intended benefits include, but are not limited to, addressing issues such as:

- Hurricane evacuation
- Congestion mitigation
- Trade and logistics
- Broadband, water and sewer connectivity
- Energy distribution
- Autonomous, connected, shared and electric vehicle technology
- Other transportation modes, such as shared-use nonmotorized trails, freight and passenger rail, and public transit
- Mobility as a service

☐ Do not show this splash screen again.


OK



Source	Layers
University of Florida GeoPlan Center	Suncoast Connector County Boundaries, County Seats, Other Florida Counties, Prime Farmland, Native American Lands
Florida Department of Environmental Protection	Springs, Springs Priority Focus Areas, Surfacewater, Aquatic Preserves, Outstanding Florida Waters, State Parks, Mitigation Banks, Mitigation Bank Service Areas
U.S. Fish & Wildlife Service	Wood Stork Active Colonies, Wood Stork Core Foraging Area, Red Cockaded Woodpecker Consultation Area, Florida Scrub-Jay Consultation Area, Atlantic Sturgeon Critical Habitat, Frosted Flatwoods Salamander Critical Habitat, Piping Plover Critical Habitat, West Indian Manatee Critical Habitat, Wildlife Refuge
Florida Fish & Wildlife Conservation Commission	Active Bald Eagle Nests, Red Cockaded Woodpecker Observation Locations, Wildlife Management Areas
Florida Natural Areas Inventory	Florida Forever Acquired Property, Florida Forever Targeted Property, Florida Conservation Lands Inventory, Florida Ecological Greenways, Florida Wetlands Priority, Aggregated Resource Priorities
Florida Bureau of Archaeological Research	Historical Structures, Historical Cemeteries, Historical Bridges, Historic Resource Group
U.S. Census Bureau	County Boundaries


Source	Layers
Southwest Florida Water Management District	Recharge & Discharge Areas to & from the Floridan Aquifer System, Agriculture & Silviculture, Wetlands, Land Use
Northwest Florida Water Management District	Agriculture & Silviculture, Wetlands, Land Use
Suwannee River Water Management District	Agriculture & Silviculture, Wetlands, Land Use
St. Johns River Water Management District	Agriculture & Silviculture, Wetlands, Land Use
Florida Division of Emergency Management	Evacuation Routes, Storm Surge Zones
Federal Emergency Management Agency	Floodplain
Florida Forest Service	State Forests
Florida Department of Revenue	City Limits






GIS & Mapping Data Downloads


Search Data By Keyword




Search Data By Category



BOATING

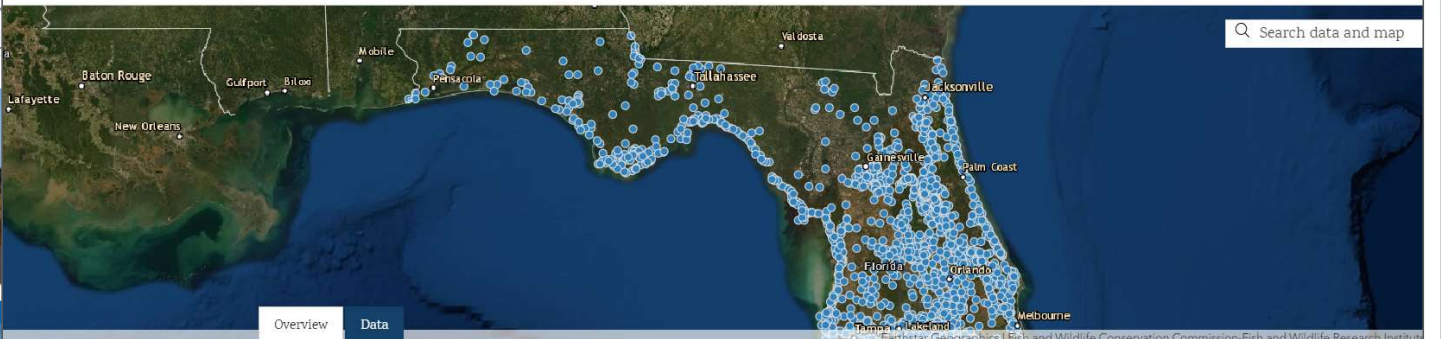




GIS & Mapping Data Downloads

Eagle Nesting

Last updated 3 months ago | 2,614 Records



Overview Data

7/16/2019 Feature Layer Custom License

Known bald eagle nesting territories within the state of Florida were surveyed by the Florida Fish and Wildlife Conservation Commission (FWC) during the 2016 nesting season with fixed-wing or rotary-wing aircraft. Nest locations were determined with the use of aircraft-based Global Positioning System (GPS) units. Accuracy of locations is estimated to be within 0.1 miles of the true location. Locations are given in longitude and latitude to hundredths of a minute. The

About

FWC_OpenData
Shared By: GISL
Data Source: ntr

Download APIs

- Full Dataset
- Spreadsheet
- KML
- Shapefile



FloridaMCORES.com



Overview of AMME Considerations

Task Force Meeting #2



October 2019

	Typical Planning Process	Enhancements
Mobility	Moving vehicles	Moving people and freight
Connectivity	Individual facilities or modes	Multiple modes and types of infrastructure including emerging technologies
Opportunity	Reacting to growth and development	Supporting regional and community visions, job growth, workforce development
Resiliency	Responding to system failures	Preparing for future risks and potential disrupters
Environment	Avoiding, minimizing, mitigating impacts	Enhancing communities and the environment
Safety	Reducing safety risks	Safety and security for all users; enhanced emergency evacuation and response



Understand study area resources

Natural

Cultural

Social

Physical



Identify considerations for how to address resources

Avoid

Minimize

Mitigate

Enhance



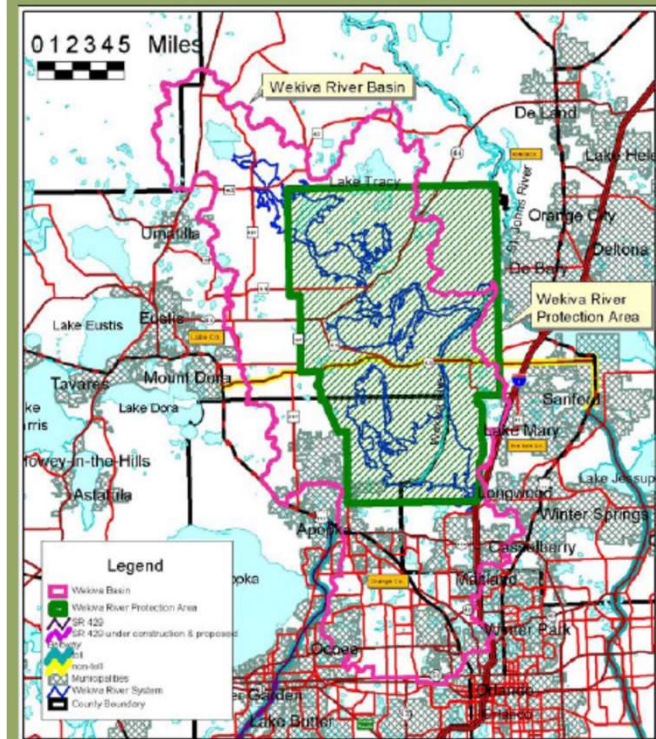
Develop guiding principles for corridor planning and development

	Generally Means..	Example....
Avoid	Avoid significant direct impacts, to the extent feasible	Physically avoid encroaching a resource (<i>e.g., existing conservation lands</i>)
Minimize	Reduce impacts	Change corridor location or design concept to reduce impacts (<i>e.g., limit access in areas not intended for new development</i>)
Mitigate	Offset impacts	Create new resources to offset negative impacts (<i>e.g., new wetlands to compensate for project impacts</i>)
Enhance	Create net benefits	Design corridor to enhance or restore resources (<i>e.g., bridge corridor to restore water flow</i>)

Example 1: Wekiva Basin

- Defined regional connectivity need
- Considerations
 - Wekiva River and springs; surface and groundwater resources
 - State and county parks and preserves
 - Impacts of projected population growth and travel

Figure 2. Wekiva River Protection Area and Wekiva River Surface Water Basin



Source: Department of Community Affairs and St. Johns River Water Management District, October 2002

• Guiding Principles for Wekiva Corridor Location

- Do not encourage or promote additional development from already approved land uses
- **Minimize** any impacts to habitat or species
- **Minimize** impacts on spring-shed or groundwater recharge areas
- **Minimize** direct impacts to wetlands
- **Avoid**, or **mitigate** if required, impacts on conservation lands and their proper management
- Seek to **minimize** impacts on existing neighborhoods and residential communities
- *Others...*



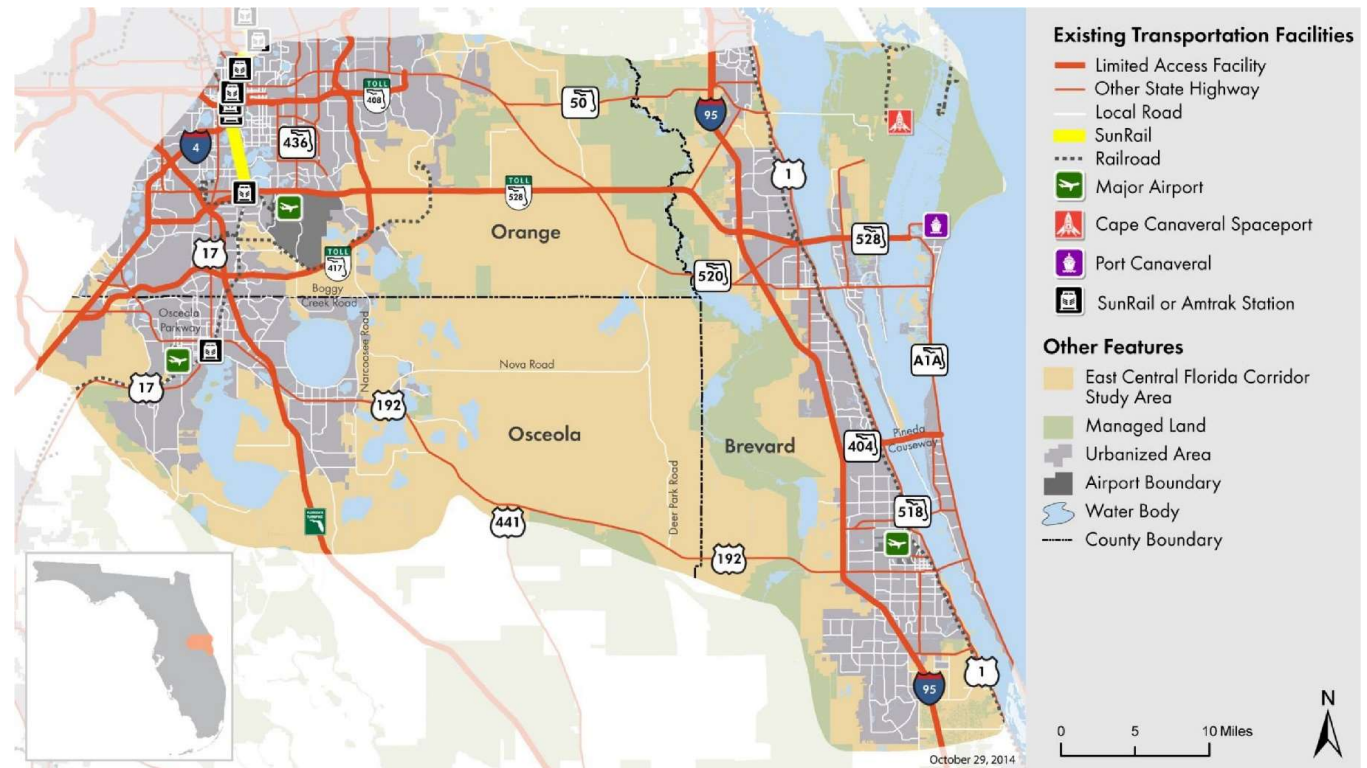
- Guiding Principles for Parkway Design Features & Construction
 - Provide that all new expressways be fully limited access
 - Include the maximum provision for bridging through strategically important wetlands
 - Elevate (bridge) identified functionally significant wildlife corridors
 - Design storm water treatment facilities to **minimize** habitat loss
 - *Others...*

Figure 4. Examples of Elevated Roadway and Wildlife Underpass



Example 2: East Central Florida Corridor

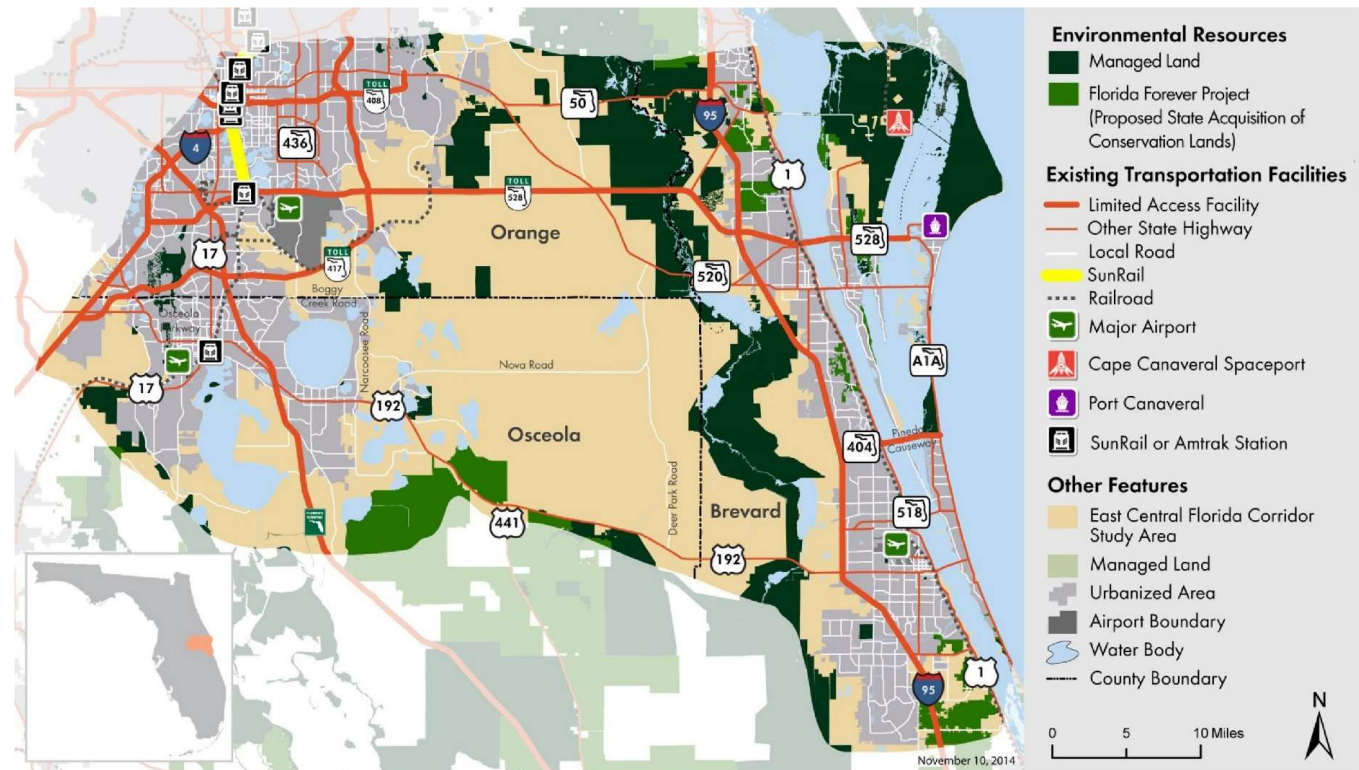
- General regional connectivity needs
- Considerations
 - Environmental resources
 - Agricultural lands
 - Existing communities (urban/rural)
 - Growing economic centers



Example 2: East Central Florida Corridor

Guiding Principle:

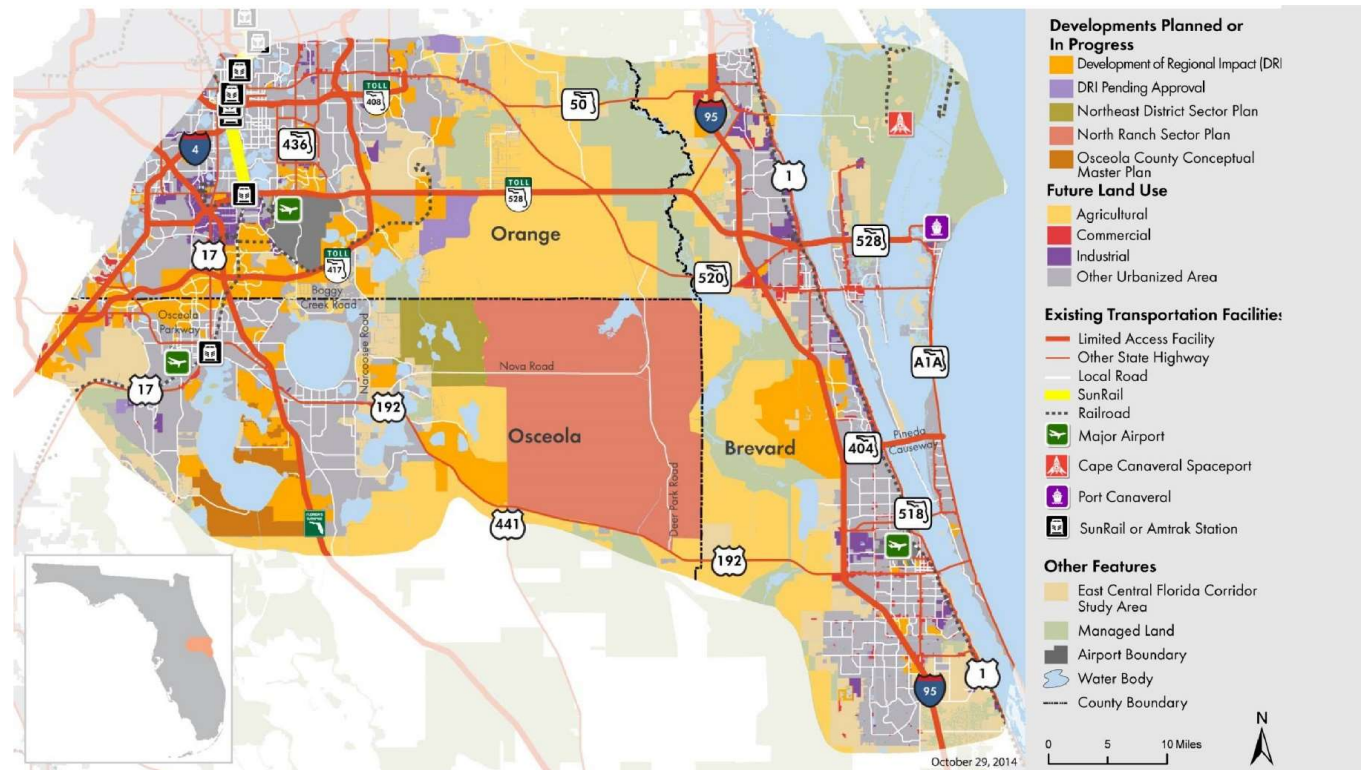
- **Avoid**, to the extent feasible, existing lands currently managed for conservation purposes; where avoidance is not feasible, **minimize** and **mitigate** impacts on these lands



Example 2: East Central Florida Corridor

Guiding Principles:

- ...improve connectivity to and enhance the quality of existing communities and previously approved developments, while **avoiding** or **minimizing** adverse impacts on these communities and developments



Meeting 1

August 2019

- Overview
- Work Plan

Meetings 2, 3

October, December 2019

- Identify Avoidance and Minimization Considerations
- Develop Guiding Principles
- Review Initial Corridor Opportunities

Meetings 4, 5

March, June 2020

- Identify Mitigation and Enhancement Considerations
- Refine Guiding Principles
- Review Potential Corridor Opportunities; Discuss Implementation Actions

Meetings 6, 7

August, September 2020

- Receive Public Comment on Draft Recommendations
- Develop Draft Final Report
- Adopt Final Report



m·cores

MULTI-USE CORRIDORS OF REGIONAL ECONOMIC SIGNIFICANCE

FloridaMCORES.com



Suncoast Connector Task Force Meeting #2

Avoidance & Minimization Considerations



October 23, 2019

Define

Avoidance & Minimization

1

A light green arrow pointing downwards from the first step to the second.

Review

State & Federal Regulation & Laws

2

A light green arrow pointing downwards from the second step to the third.

Identify

Environmental resources: natural, cultural,
social, & physical

3

Examples

Transportation & the environment

4

A light green arrow pointing downwards from the "Examples" box to the "Create" box.

Create

Composite Map

5

A light green arrow pointing downwards from the "Create" box to the "Discuss" box.

Discuss

Questions & approach

6

“Altogether eliminating an adverse environmental impact from a transportation decision by not taking a certain action or parts of an action.”

Avoidance is the first step in the evaluation process

- Includes determining which environmental resource, at the **maximum extent possible**, cannot be impacted by transportation decisions

Avoidance alternatives

- Are those that entirely **avoid** the use of the environmental resource

Avoidance alternatives consider shifts

- Reduced footprints and other modifications in the project development to **preserve** and **protect** the environmental resource

“Reduce adverse impacts on the environment by a transportation decision by limiting the magnitude of the action and its implementation.”

If no feasible and prudent **avoidance** alternatives exist

- **Minimization** efforts should be pursued
- **Minimization** measures to reduce the impact to environmental resources

Evaluations based on availability, feasibility, viability, and cost

- Choosing the alternative that has **reduced** impacts

Considerations resulting in use of an environmental resource without a feasible and prudent **avoidance** alternative

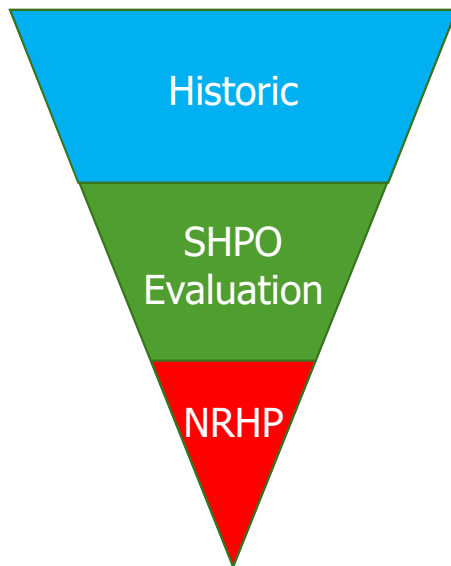
- The alternative that will cause the **least** overall impact (after factoring in mitigation measures) must be considered

- The **Clean Water Act** is a U.S. Federal law that regulates the discharge of pollutants into the nation's surface waters, including lakes, rivers, streams, wetlands, and coastal areas.
- The **purpose** of the **Clean Water Act** is to *restore* and *maintain* clean and healthy waters.
- It is administered by the U.S. Army Corps of Engineers (USACE) and overseen by the U.S. Environmental Protection Agency (EPA).
- Proposed activities are regulated through a permitting process. An individual permit is required for potentially significant impacts.
- Prior to applying for a permit, the permittee must first show:
 - Steps have been taken to **avoid** impacts to wetlands, streams and other aquatic resources
 - Potential impacts have been **minimized**
 - A viable alternative **does not** exist that is less damaging to the aquatic environment
 - The nation's waters would **not** be significantly degraded
 - Compensation will be provided for all remaining unavoidable impacts



- The **purpose** of the **Endangered Species Act** is to *protect* and *recover* imperiled species and the ecosystems upon which they depend.
- It is administered by the U.S. Fish and Wildlife Service (USFWS) and the U.S. National Oceanic and Atmospheric Administration (NOAA) Fisheries Service.
- The FWS maintains a list of endangered species, which include birds, insects, fish, reptiles, mammals, crustaceans, flowers, grasses, and trees.
- Under the Endangered Species Act, species may be listed as either **endangered** or **threatened**.
 - "**Endangered**" means a species is in danger of extinction throughout all, or a significant portion, of its range.
 - "**Threatened**" means a species is likely to become endangered within the foreseeable future.
- All species of plants and animals (except pest insects) are eligible for listing as endangered or threatened.

- **The National Historic Preservation Act of 1966**, was passed primarily to acknowledge the importance of protecting our nation's heritage by preserving historical and archaeological sites



All properties over 50 years old

State Historic Preservation Office (SHPO) Evaluation

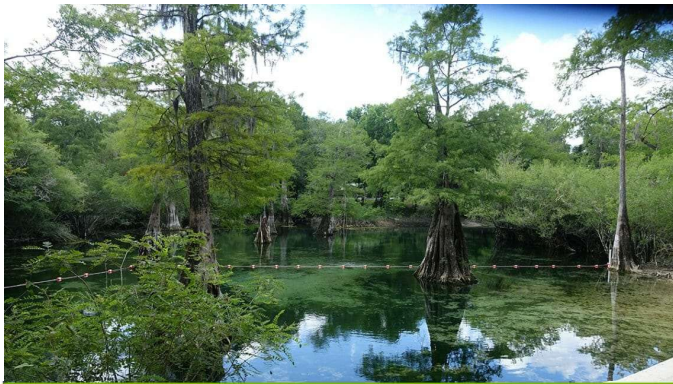
Listed On National Registered of Historic Places (NRHP)
Meets one of the four criteria: be associated with a historical event or person, have distinctive architecture/construction or likely to yield information about history

- Administered by the State Historic Preservation Office (SHPO)
- The **purpose** of the National Historic Preservation Act is:
 - Set Federal Policy for preserving our Nation's Heritage
 - Establish a Federal-State and Federal-Tribal Partnership
 - Establish a National Register of Historic Places and Landmarks
 - Requires a Qualified State Historic Preservation Officer
 - Charges Federal Agencies with Responsible Stewardship

- Health of our groundwater
- Support entire ecosystems
- Offer recreational opportunities such as:
 - Swimming
 - Kayaking
 - Diving



Fanning Spring State Park, Levy County



Rock Bluff Springs, Gilchrist County

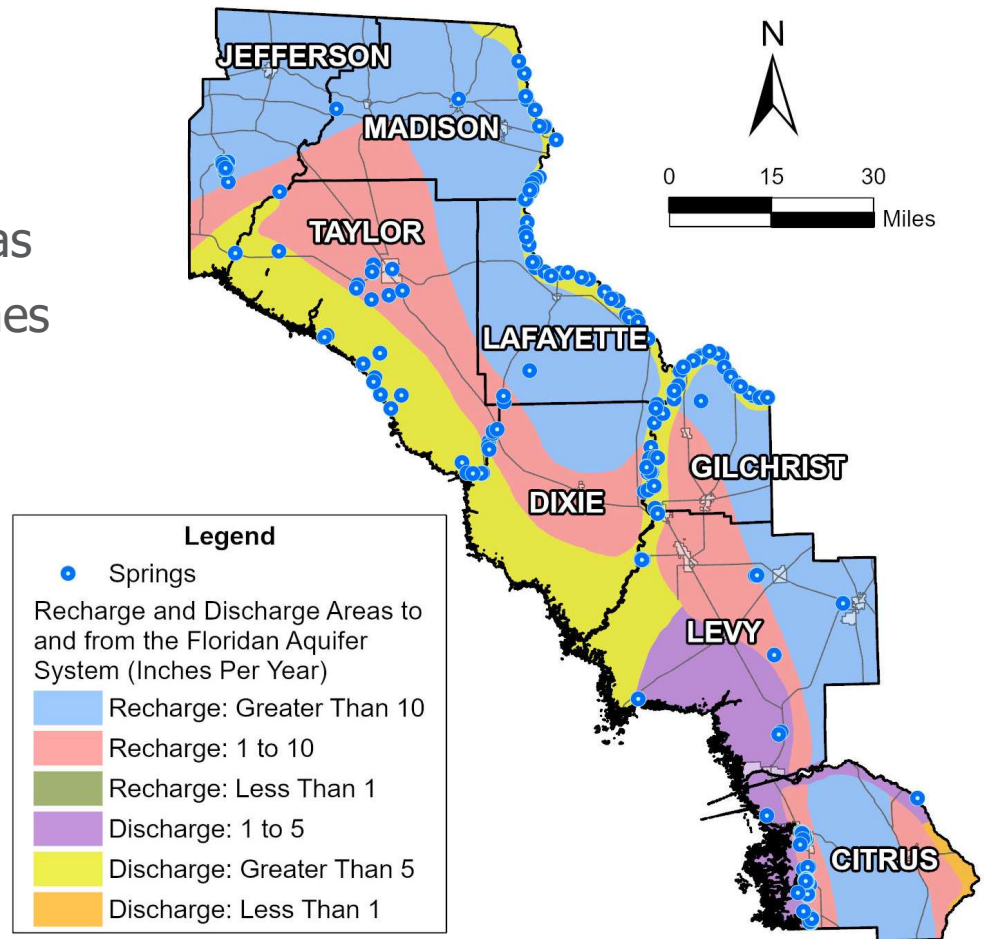


Three Sisters Springs, Citrus County

- **Avoid** spring heads completely
- **Conserve** conveyance to water bodies
- **Minimize** impacts to aquifer recharge areas
- **Minimize** impacts to spring protection zones



Gornto Springs, Dixie County



- Distinct ecosystem that is flooded by water, either permanently or seasonally
 - Four Categories:
 - ✓ Estuarine/Marine – wetlands associated with estuary/ocean
 - ✓ Lacustrine – wetlands associated with lakes
 - ✓ Riverine – wetlands associated with rivers (flowing water)
 - ✓ Palustrine – freshwater wetlands



Estuarine/Marine



Lacustrine

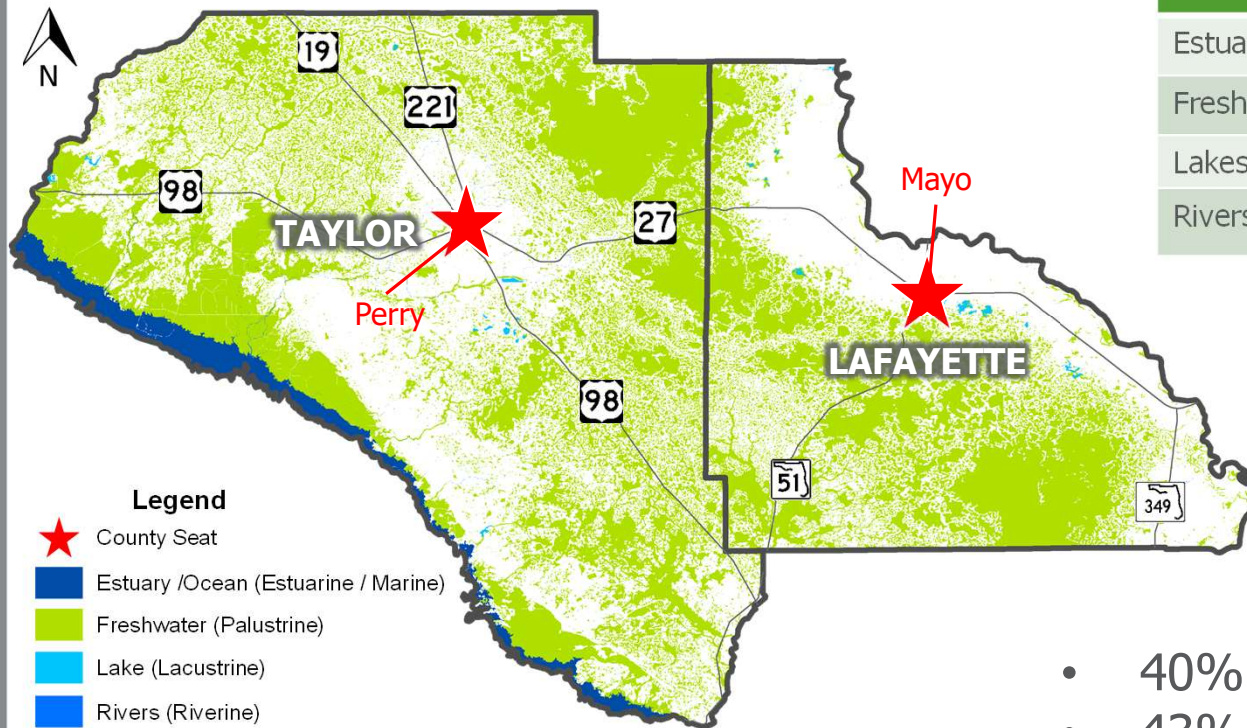


Riverine



Palustrine

Taylor & Lafayette Counties



Wetland Type	Counties (acres)		Total (acres)
	Taylor	Lafayette	
Estuary/Ocean	27,766	0	27,766
Freshwater	284,875	149,751	434,626
Lakes	699	850	1,549
Rivers	812	1,215	2,027

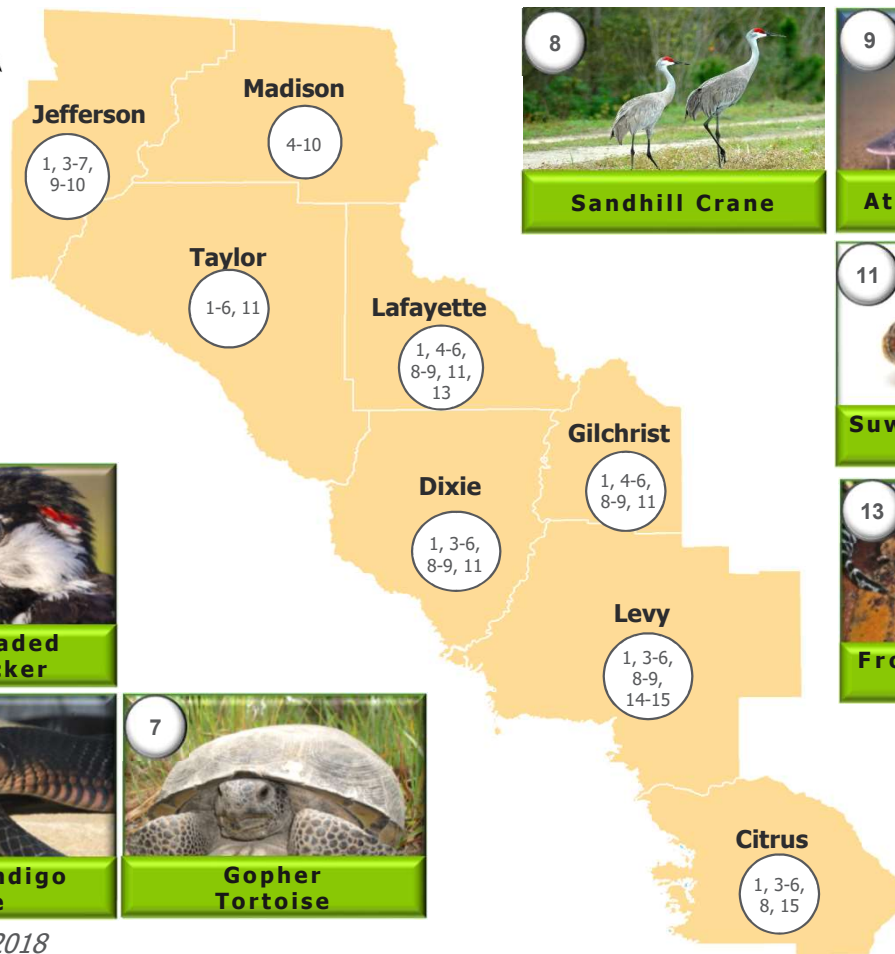
- 40% of Taylor County is wetlands
- 43% of Lafayette County is wetlands

Source: U.S. Fish and Wildlife Service, October 2018

- Avoid wetland impacts, if possible
- If impacts are unavoidable, then impacts are minimized to the maximum extent feasible
- Wetland mitigation practices to be discussed at a later Task Force meeting



Threatened & Endangered Species





Gopher Tortoise Relocation



Bald Eagle Nest



Eastern Indigo Snake Detector Dogs

ATTENTION:
THREATENED EASTERN INDIGO
SNAKES MAY BE PRESENT ON
THIS SITE!!!



Please read the following
information provided by the
U.S. Fish and Wildlife Service
to become familiar with
standard protection measures
for the eastern indigo snake.



■ Jefferson County

■ 23 NRHP Sites

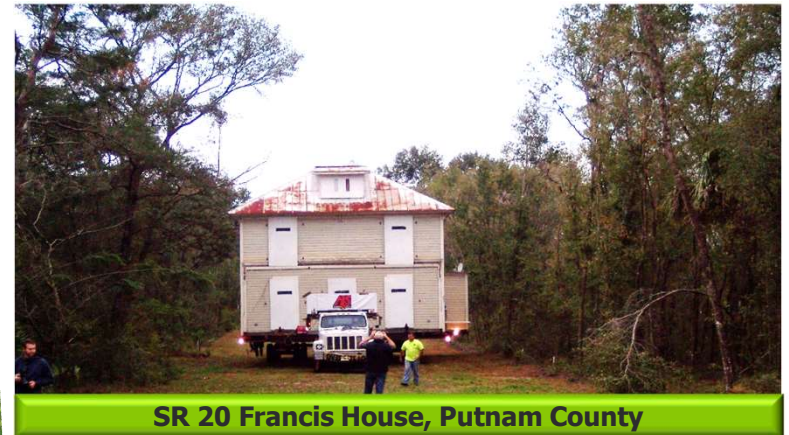
■ Madison County

■ 8 NRHP Sites



Source: National Register of Historic Places, April 2019

- **Avoid** historic cemeteries completely
- **Avoid** any resource that is on the National Register of Historic Places
- **Avoid** other historic bridges, structures, and buildings to the maximum extent feasible
- **Example: State Road 20 house relocation**
 - Relocated & refurbished





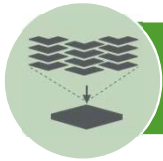
Avoidance & Minimization GIS Layers from S.B. 7068

Description	Source
Florida Forever Acquired Lands	Florida Natural Areas Inventory
Managed Conservation Lands	Florida Natural Areas Inventory
100 Year Floodplains	FEMA
Wetlands	Water Management Districts
Farmland Preservation Areas	Marion County
Agricultural Lands	Water Management Districts
Prime Farmland	Water Management Districts
Aquifer Recharge Areas	Saint John's River Water Management District
Spring Protection Zones and Spring Priority Focus Areas	Florida Department of Environmental Protection
Spring Locations	Florida Department of Environmental Protection
Outstanding Florida Waters	Florida Department of Environmental Protection
Aquatic Preserve Boundaries	Florida Department of Environmental Protection
Surface Waters	Water Management Districts
Florida Ecological Greenways Network	Florida Natural Areas Inventory
Critical Habitats	US Fish and Wildlife Services
Strategic Habitat Conservation Areas Priorities 1 and 2	Florida Natural Areas Inventory
Wildlife Refuges	US Fish and Wildlife Services
Wildlife Management Areas	Florida Fish and Wildlife Conservation Commission



Additional Avoidance & Minimization GIS Layers

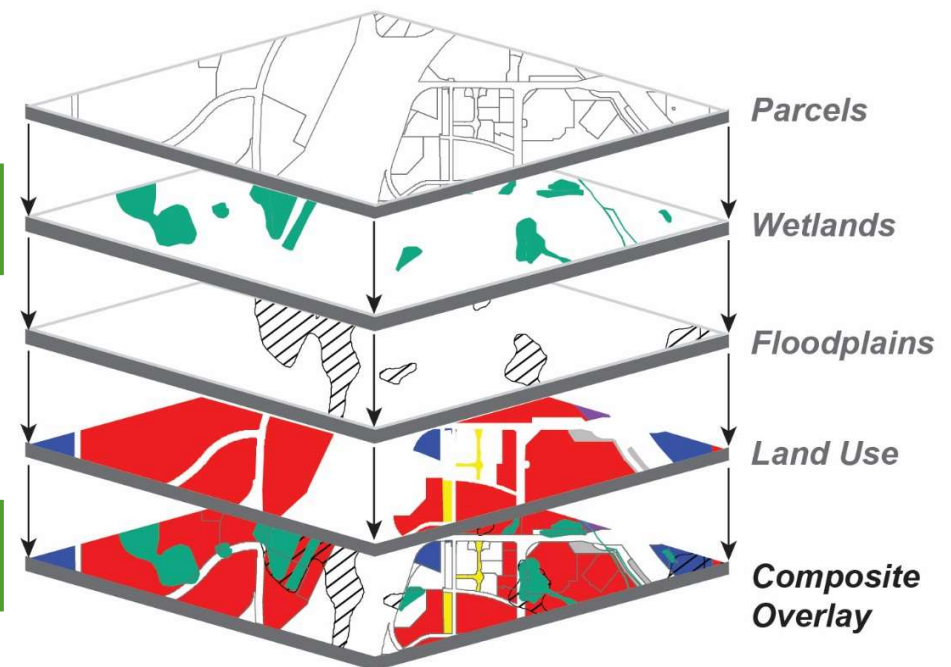
Description	Source
Eagle Nests	Florida Fish and Wildlife Conservation Commission
Mitigation Banks	Florida Department of Environmental Protection
Subsidence Incident Reports	Florida Department of Environmental Protection
Water Management District Lands	Water Management Districts
Florida Forever Targeted Property	Florida Natural Areas Inventory
Florida Wood Stork Core Foraging Areas	US Fish and Wildlife Services
Florida Wood Stork Nesting Colonies	US Fish and Wildlife Services
Statewide Protected Species Consultation Areas	US Fish and Wildlife Services
Historical Bridges	Bureau of Archaeological Research
Historical Cemeteries	Bureau of Archaeological Research
Historical Resources	Bureau of Archaeological Research
Historical Structures	Bureau of Archaeological Research
Native American Lands	University of Florida GeoPlan Center
Gopher Tortoise Relocation Permit Recipient Sites	Fish and Wildlife Research Institute
Wading Bird Rookery Surveys	Florida Fish and Wildlife Conservation Commission
Black Bear Ranges within the State of Florida	Florida Fish and Wildlife Conservation Commission
Florida's Statewide Seagrass	Florida Fish and Wildlife Conservation Commission
Gulf of Mexico Essential Fish Habitats	National Oceanic and Atmospheric Administration
Navigable Waterway Network in Florida	US Department of Transportation
Cemeteries	University of Florida GeoPlan Center



Overlay several layers on one map



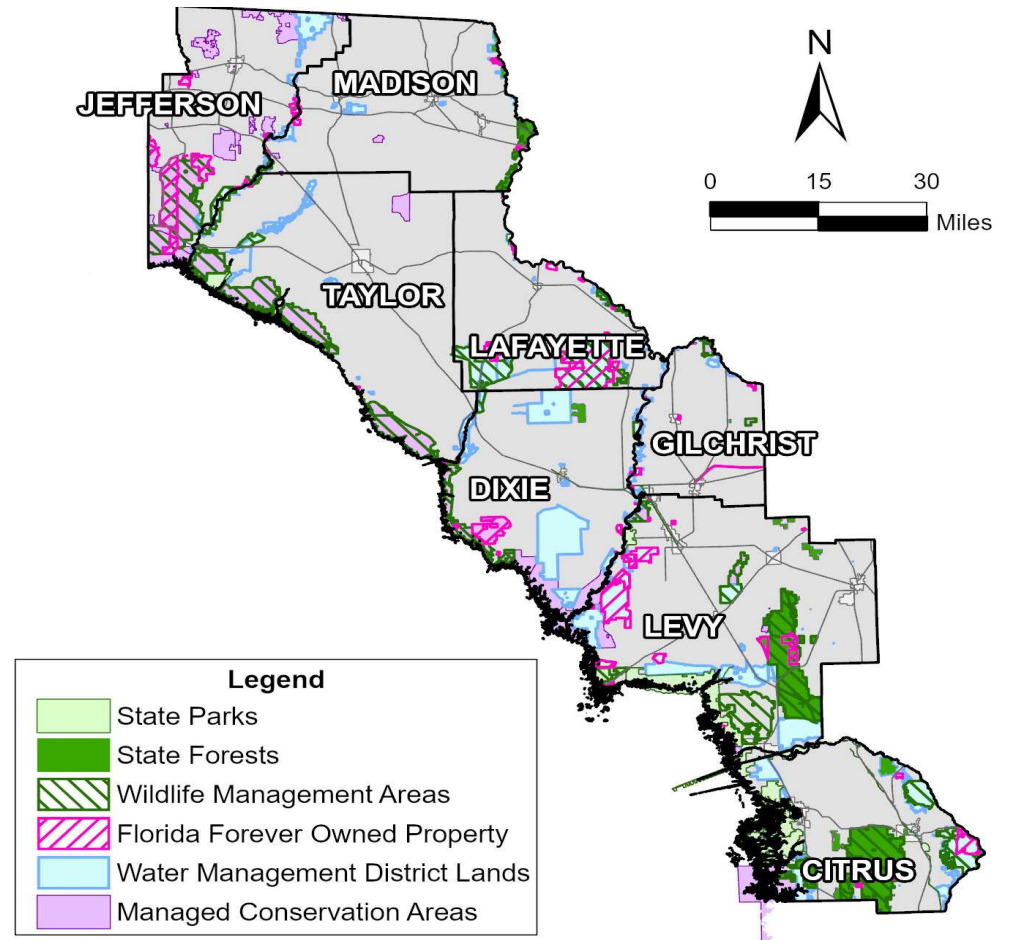
Identify opportunities & constraints



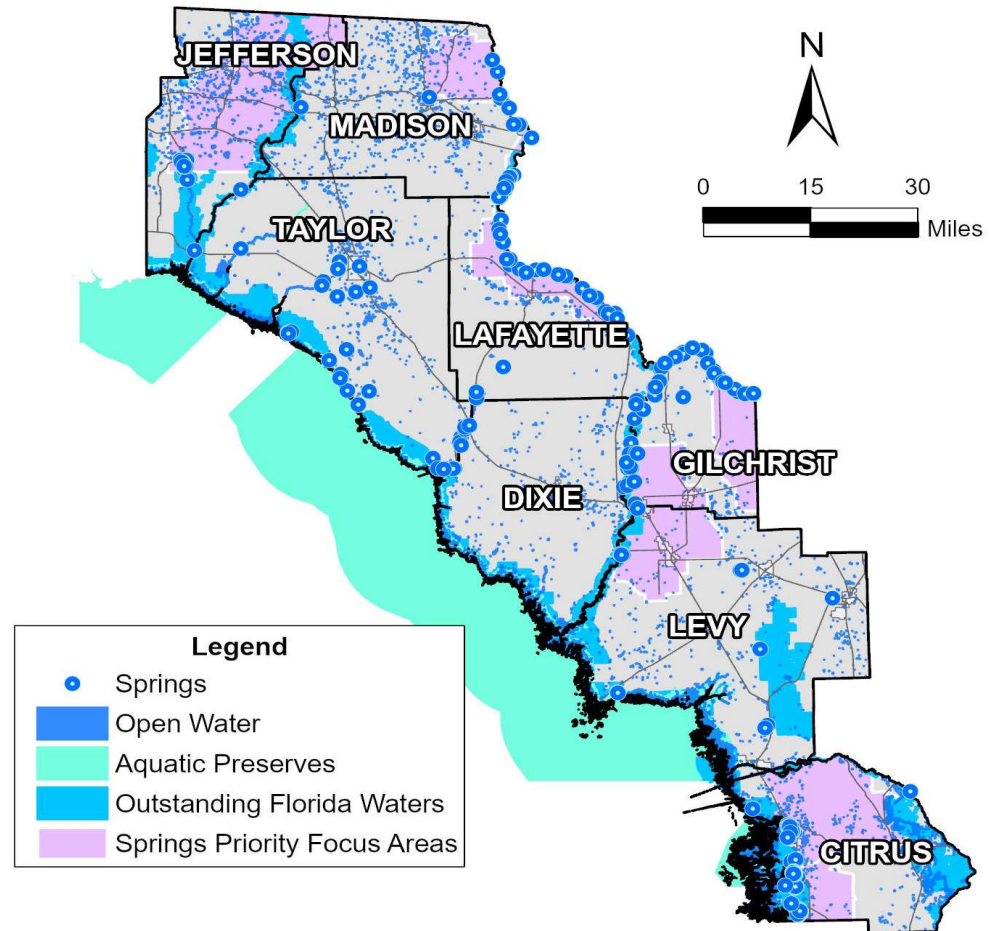
Managed Conservation Lands

- State Parks
- National Parks
- Water Management District Lands

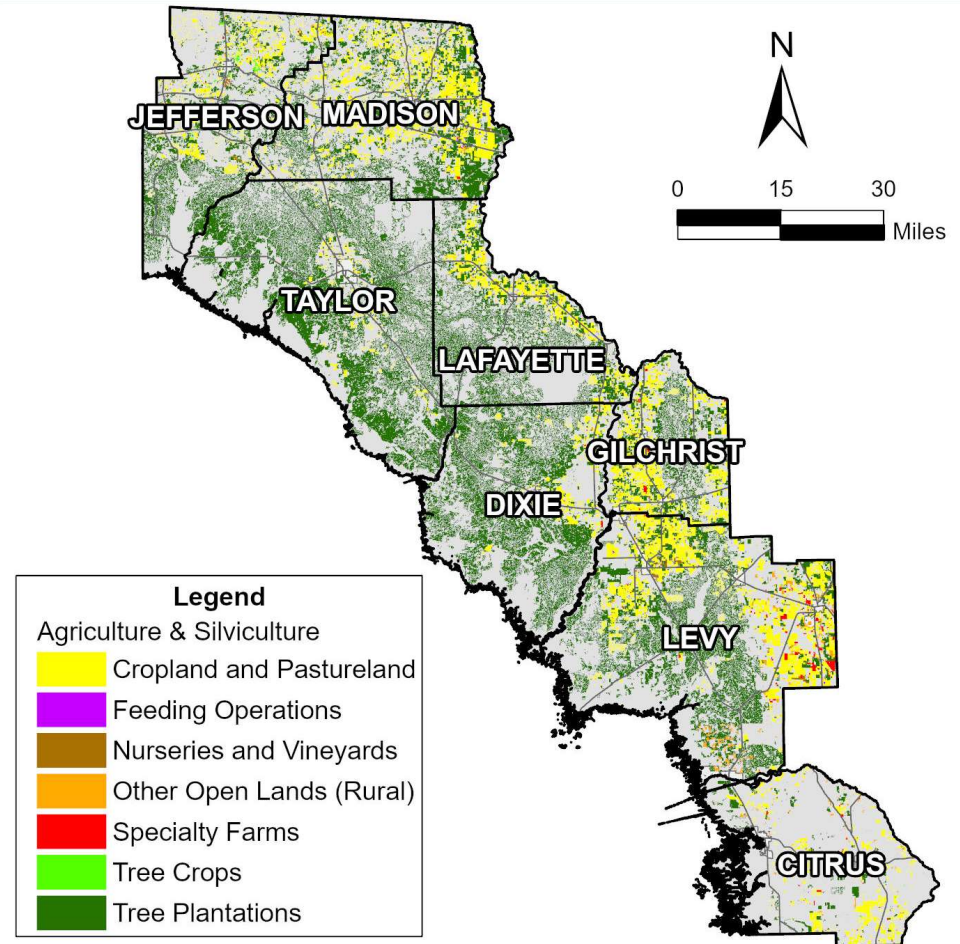
Florida Forever Lands



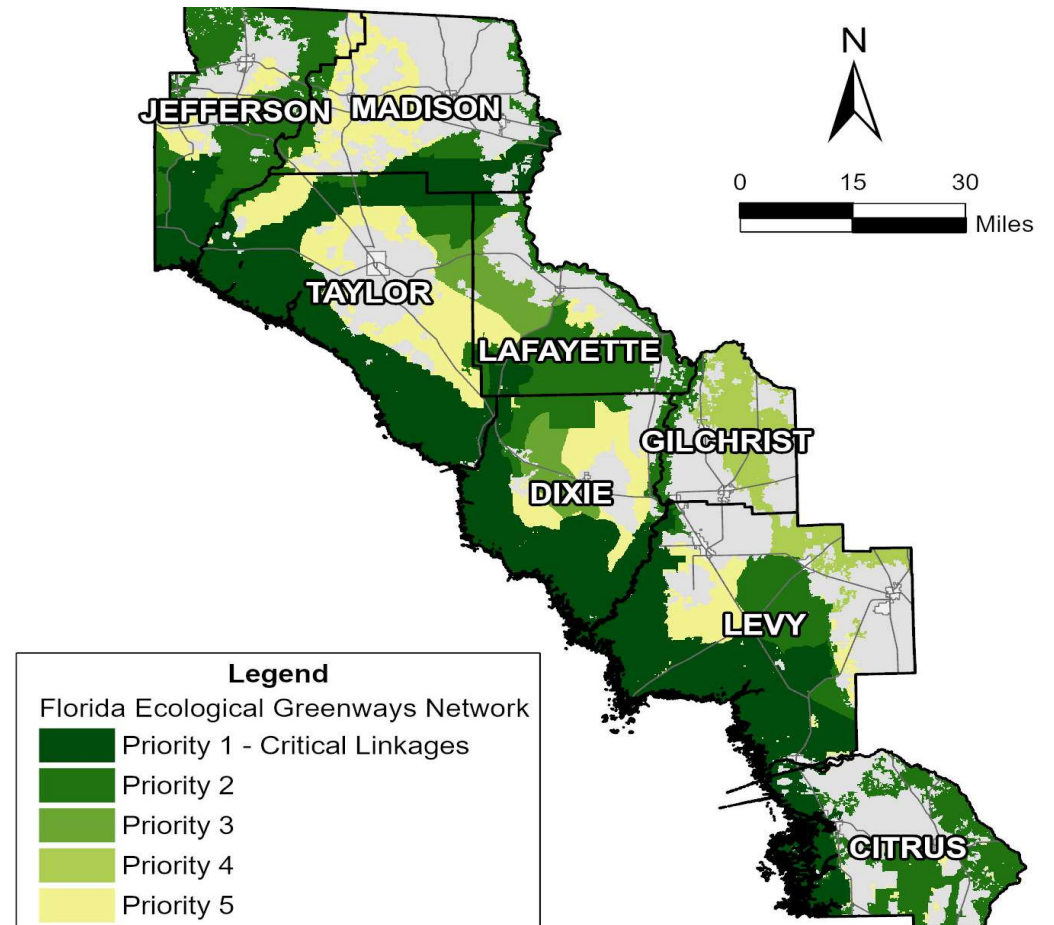
- Spring Locations
- Open Waters
- Spring Priority Focus Areas
- Aquatic Preserve Boundaries
- Outstanding Florida Waters



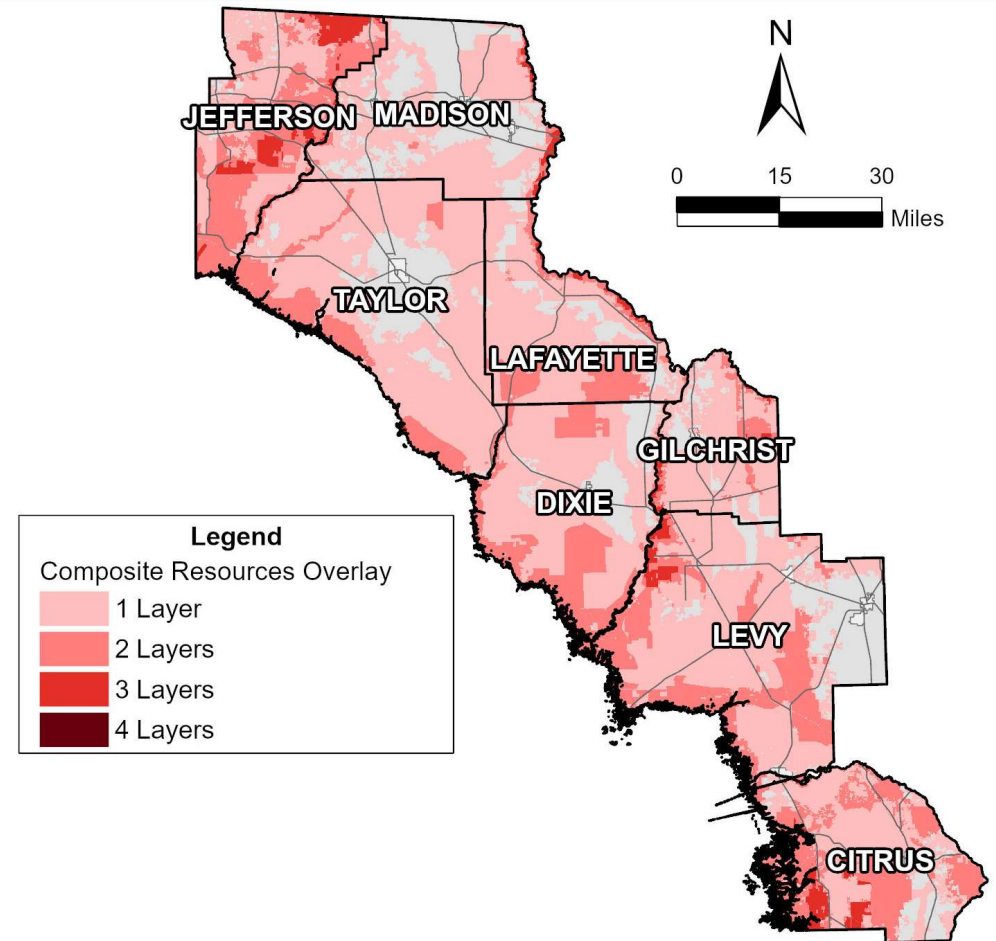
-  Prime Farmland
-  Agricultural Lands



■ Florida Ecological Greenways Network



- Managed Conservation Lands
- Spring Priority Focus Areas
- Florida Ecological Greenways
- Critical Habitats
- Agricultural Lands





m·cores

MULTI-USE CORRIDORS OF REGIONAL ECONOMIC SIGNIFICANCE

FloridaMCORES.com



Suncoast Connector Task Force Meeting #2

Next Steps



October 23, 2019

- Post all presentations from today
- Prepare and distribute meeting summary
- Explore current data sources for and how to collect Regional needs for:
 - Hurricane evacuation, congestion mitigation, trade and logistics
 - Broadband, water, sewer connectivity and regional system planning, energy distribution
 - Autonomous, connected, shared, electric vehicle technology, mobility as a service
 - Other transportation modes, such as shared-use nonmotorized trails, freight and passenger rail, public transit, farming logistics
 - Land Use, Drinking Water
- Financial Feasibility – when will be available and explain process

- Topics to be researched and explored
 - I-75 Relief, Hurricane Evacuation Pattern Changes, Define Co-Locate, Need for Coordination with Turnpike Task Force and Suncoast II, FDOT's Approach on Resiliency, Rail Technical Experts, Review Wekiva TF Report, Drone Footage of Wekiva Progress and Starke By-Pass, Economic Impacts/Benefits of Bypasses
- Push out GIS tool for review
 - Please provide comments/questions/additional suggested layers to Ryan Asmus (ryan.asmus@dot.state.fl.us)
 - Update layers based on input
- Follow up on data layer questions raised during meeting, e.g.
 - Conservation lands (existing v proposed, WMD overlap, ownership, farm land, optimal boundaries, etc.)
 - Wetlands – need or explore further defining types
 - Springs and Aquifer – Swallets, BMAP
 - Wildlife - Corridors
 - Resiliency – Future Sea Levels, Vulnerability for Hurricanes, Flooding
- Draft guiding principles for review/refinement at next meeting

- Meeting materials posted online today
- Meeting summary to be distributed in next 2 weeks
- Please complete meeting evaluation form before you leave today

- Community Open House: October 24, 2019, 5:30 – 7:30 PM
Old Town Education Center, 823 SE Hwy 349, Old Town, FL 32680
- Task Force Meeting #3: December 17, 2019, 10:00 AM
IFAS Auditorium, 203 Forest Park Dr, Perry, FL 32348
- Community Open House: December 19, 2019, 5:30 – 7:30 PM
Alton Family Life Center, 2365 E US 27, Mayo, FL 32066



m-cores

MULTI-USE CORRIDORS OF REGIONAL ECONOMIC SIGNIFICANCE

FloridaMCORES.com