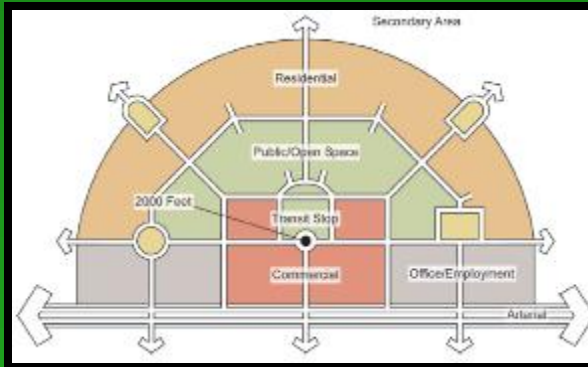


Mobility

ALACHUA COUNTY PLAN TO EFFECTIVELY LINK LAND USE & TRANSPORTATION



LINKING TRANSPORTATION & LAND USE

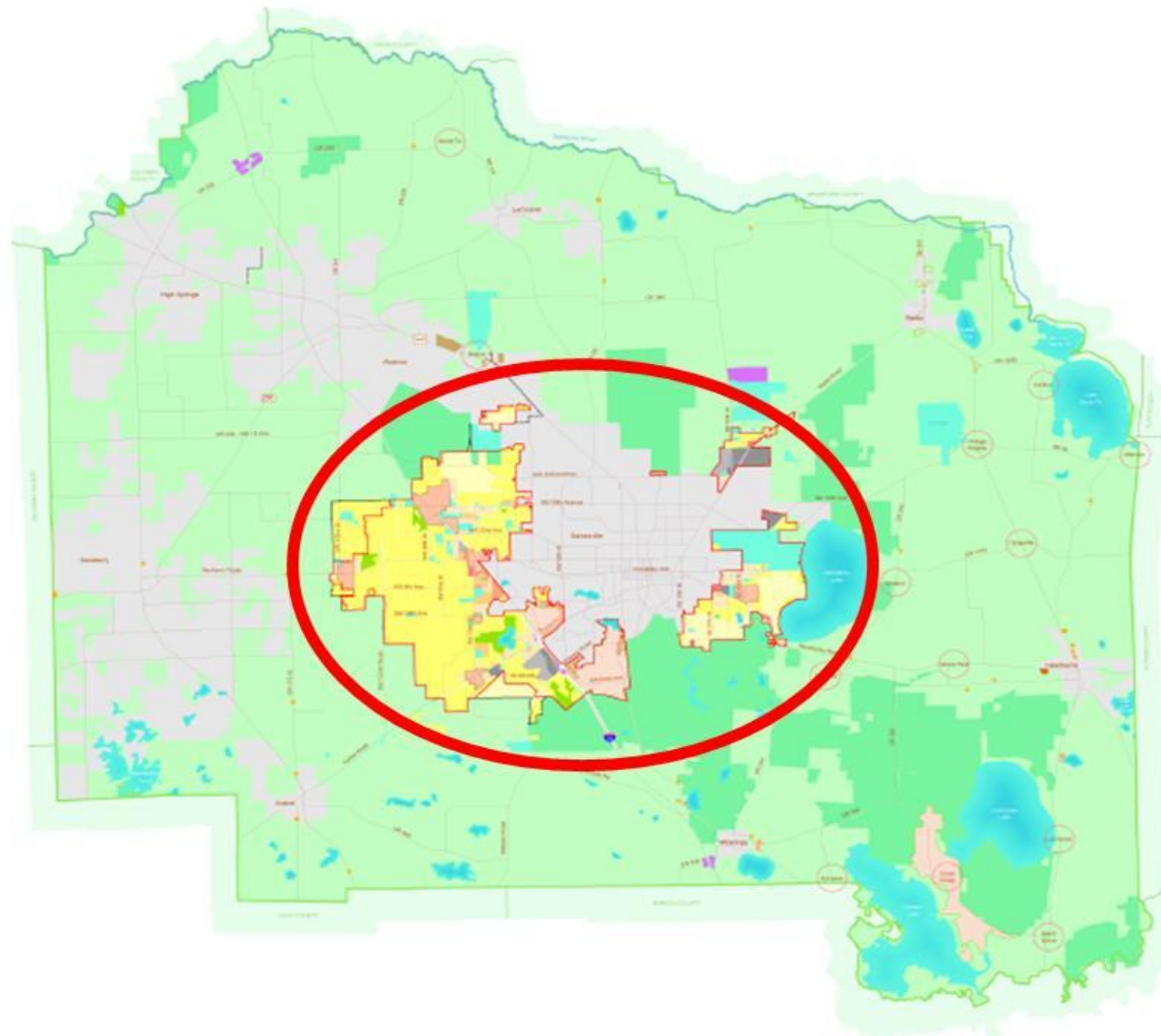


PLAN GREEN * LIVE GREEN

ENVIRONMENT * DEVELOPMENT * ENERGY * MOBILITY * ECONOMY

“REDUCE VEHICLE MILES OF TRAVEL AND PER CAPITA GREEN HOUSE GAS EMISSIONS THROUGH PROVISION OF MOBILITY WITHIN COMPACT, MIXED-USE, INTERCONNECTED DEVELOPMENTS THAT PROMOTE WALKING AND BICYCLING, ALLOW FOR THE INTERNAL CAPTURE OF VEHICULAR TRIPS AND PROVIDE THE DENSITIES AND INTENSITIES NEEDED TO SUPPORT TRANSIT.”

FUTURE LAND USE MAP 2020 - ALACHUA COUNTY, FLORIDA



LEGEND

- Commercial Enclaves
- Rural Commercial - Agriculture
- Rural Cluster
- Urban Services Line
- Urban Cluster Line
- Municipality Separator
- Water Bodies
- Municipalities
- Special Area Studies
- Activity Centers
- Recreation
- Preservation
- Commercial
- Tourist/Entertainment
- Institutional
- County Solid Waste Management Facility
- Light Industrial
- Heavy Industrial
- Estate Residential
- Low Density Residential
- Medium Density Residential
- Medium High Density Residential
- High Density Residential
- Rural/Agriculture
- Rural Employment Center
- Rural Community Employment Center

*Future Land Use Distribution in Unincorporated Area
by Acreage and Percentage*

LAND USE TYPE	ACREAGE	PERCENTAGE
Commercial	2,089 acres	16.17%
Industrial	2,939 acres	8.5%
Residential	8,542 acres	1.7%
Recreational/Open Space	1,633 acres	0.4%
Utility	4 acres	0.0%
Residential Total	32,282 acres	6.5%
<i>Freestone County (31,112 acres)</i>	<i>3,166 acres</i>	<i>1.1%</i>
Residential, High (14 + 24 = 38 acres)	3,089 acres	0.9%
Residential, Medium (1 + 24 = 25 acres)	2,186 acres	0.6%
Residential, Medium-Low (3 + 24 = 34 acres)	406 acres	0.1%
Residential, Low-Medium (1 + 24 = 25 acres)	1,467 acres	0.4%
Residential, Low (7 + 40 = 47 acres)	25,799 acres	4.1%
Residential, Very Low (1 + 24 = 25 acres)	1,467 acres	0.4%
Preservation	88,774 acres	14.2%
Pesticidal/Agriculture	371,763 acres	76.0%

1.0 Square Mile Equivalent

Capillary tube (Hudson)



Prepared by:
Alachua County Government
Department of Growth Management
10 SW 2nd Avenue
Gainesville, FL 32601
(352) 374-5240
<http://growthmanagement.alachua.fl.us>

Data Sources

Activities Centers
Commercial Bookends
Culinary Land Use
Golf Course
Marine Coastal
Open Water
Pavilion

River/Guests
Water Treatment Center
Special Area Study
Missile Support Line
Missile Research
Missile Development

Landscape: 1980 to Present, Clay, Columbia, Chatham, Long, Marion
Palmetto and University Area

DOCUMENTATION
EDUCATIONAL/RESEARCH/STUDY/ANALYSIS/RECORDS/STUDY

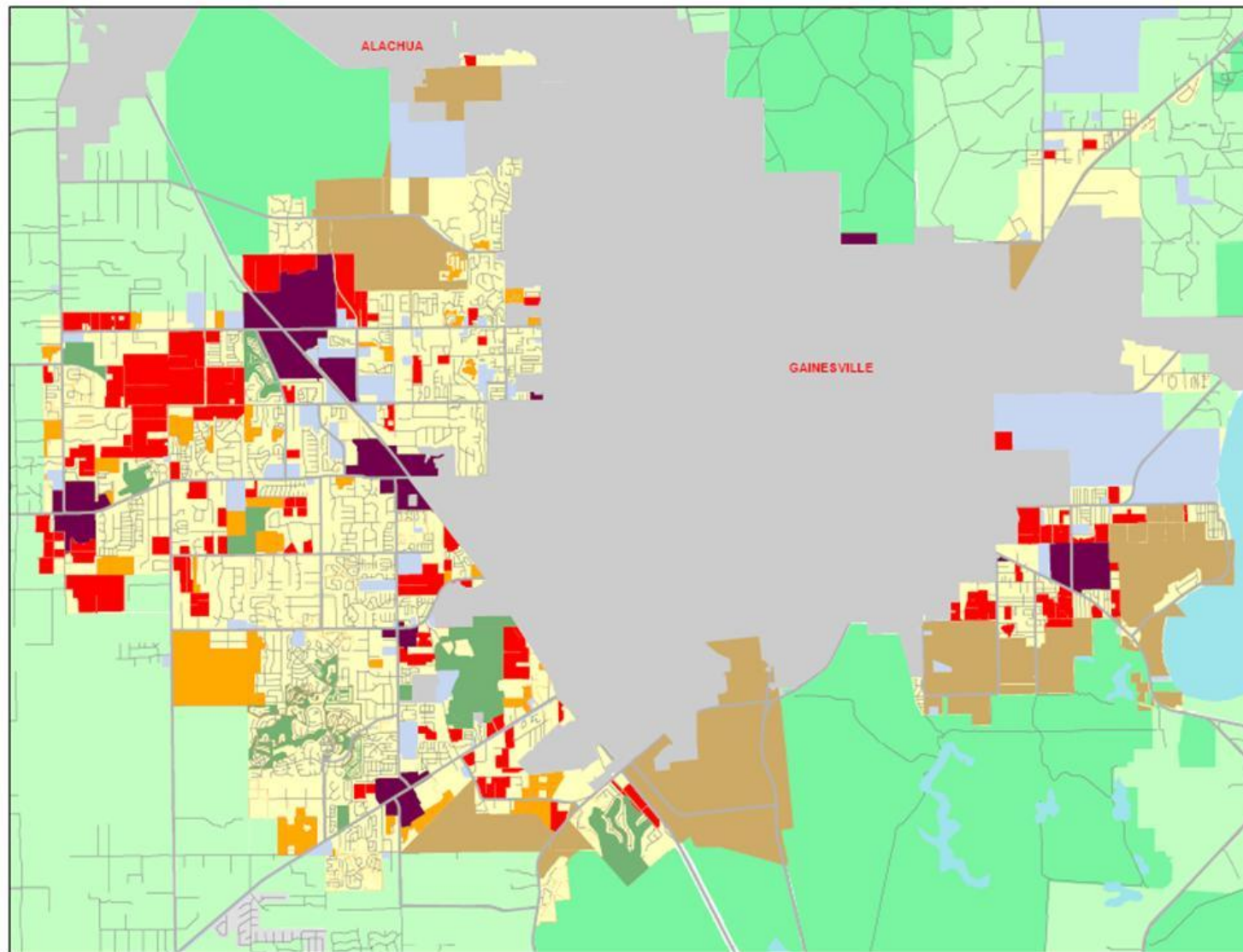
Accepted

Qrs: 03.35 (6/29/93); Qrs: 04.08 (5/5/94); Qrs: 04.11 (7/13/94)
Qrs: 04.17, 15, 10, 20 (9/24/94); Qrs: 04.24 (10/25/94)
Qrs: 04.32 (3/4/95); Qrs: 04.04, 07 (3/28/95)
Qrs: 04.10, 10, 20 (10/30/95); Qrs: 04.26, 26 (1/18/96)
Qrs: 04.30, 30, 40, 41, 42, 42, 43, 44, 45, 46, 47 (12/12/96)

Effective Date: none

Notes:

The Future Land Use categories shown on this map are defined in the policies in the Alachua County Comprehensive Plan and are to be implemented in conjunction with the Goals, Objectives and Policies. This map is part of the Future Land Use Map.



Detailed Existing Development Patterns in the Alachua County Urban Cluster (CPA 01-09)

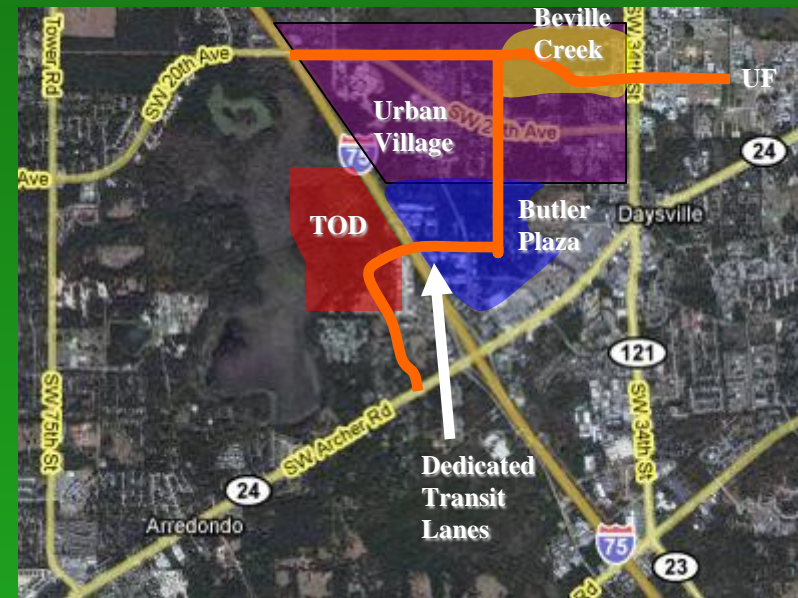


0 0.5 1 2 Miles

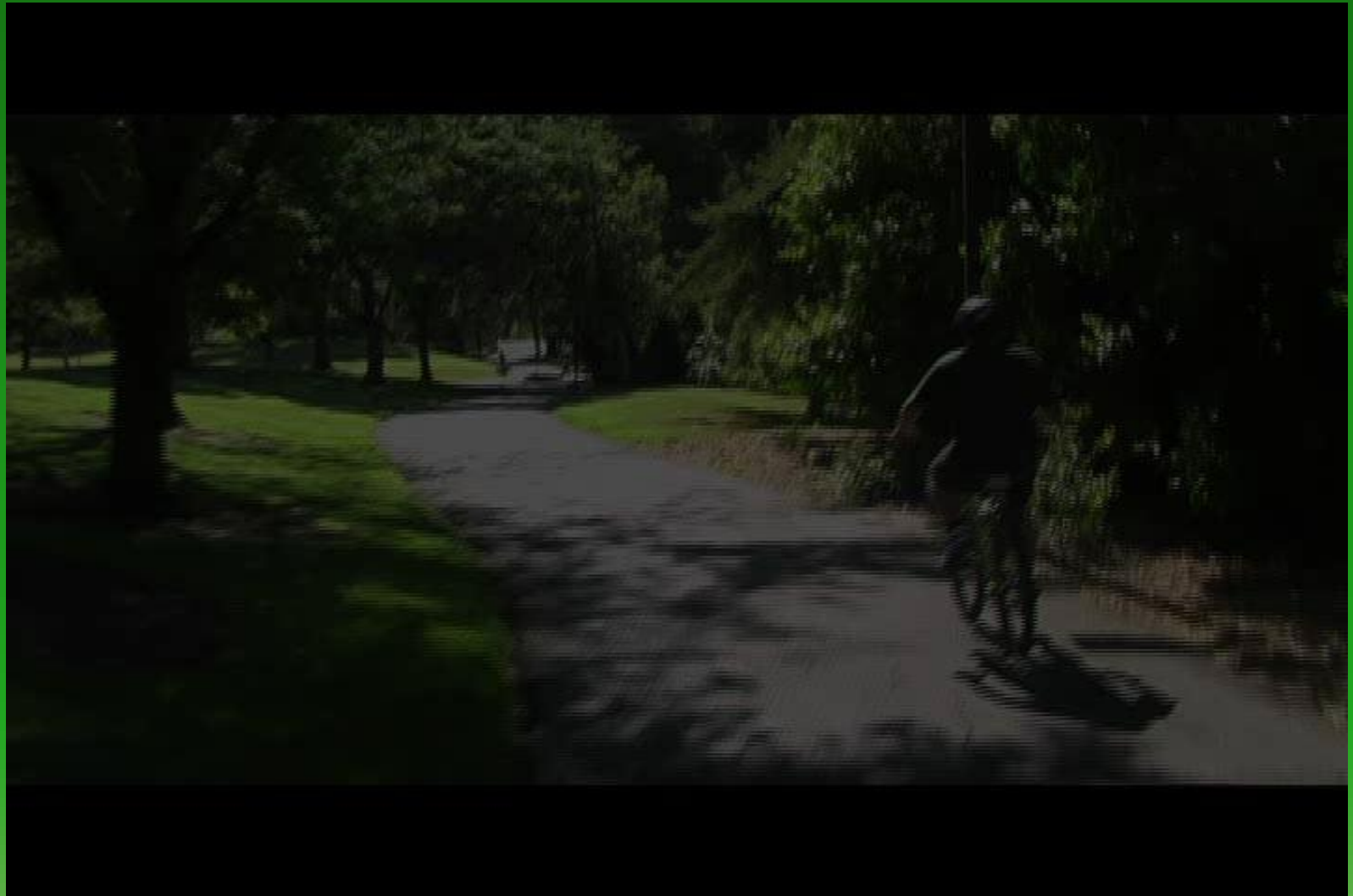




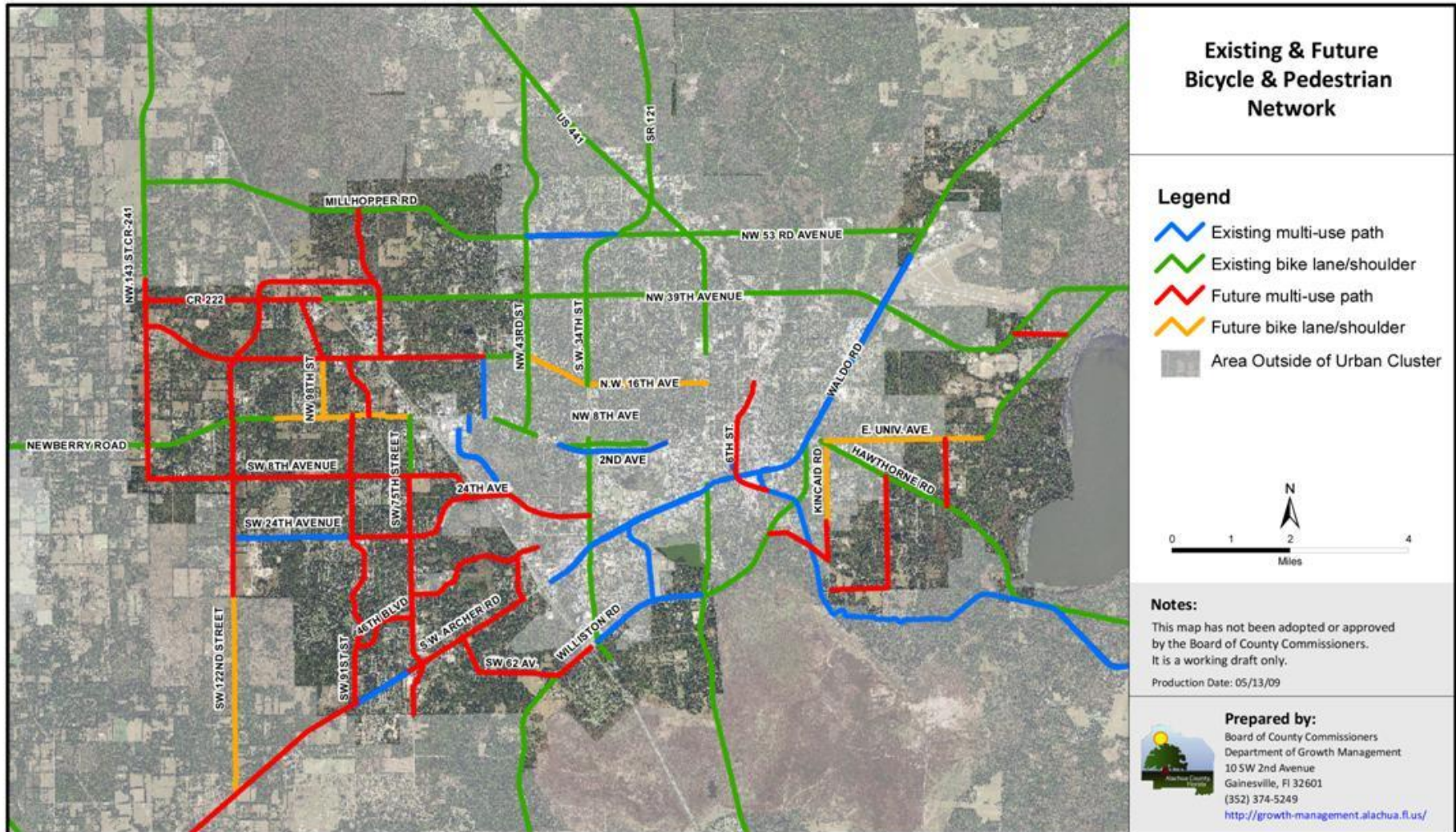
PUBLIC / PRIVATE PARTNERSHIP



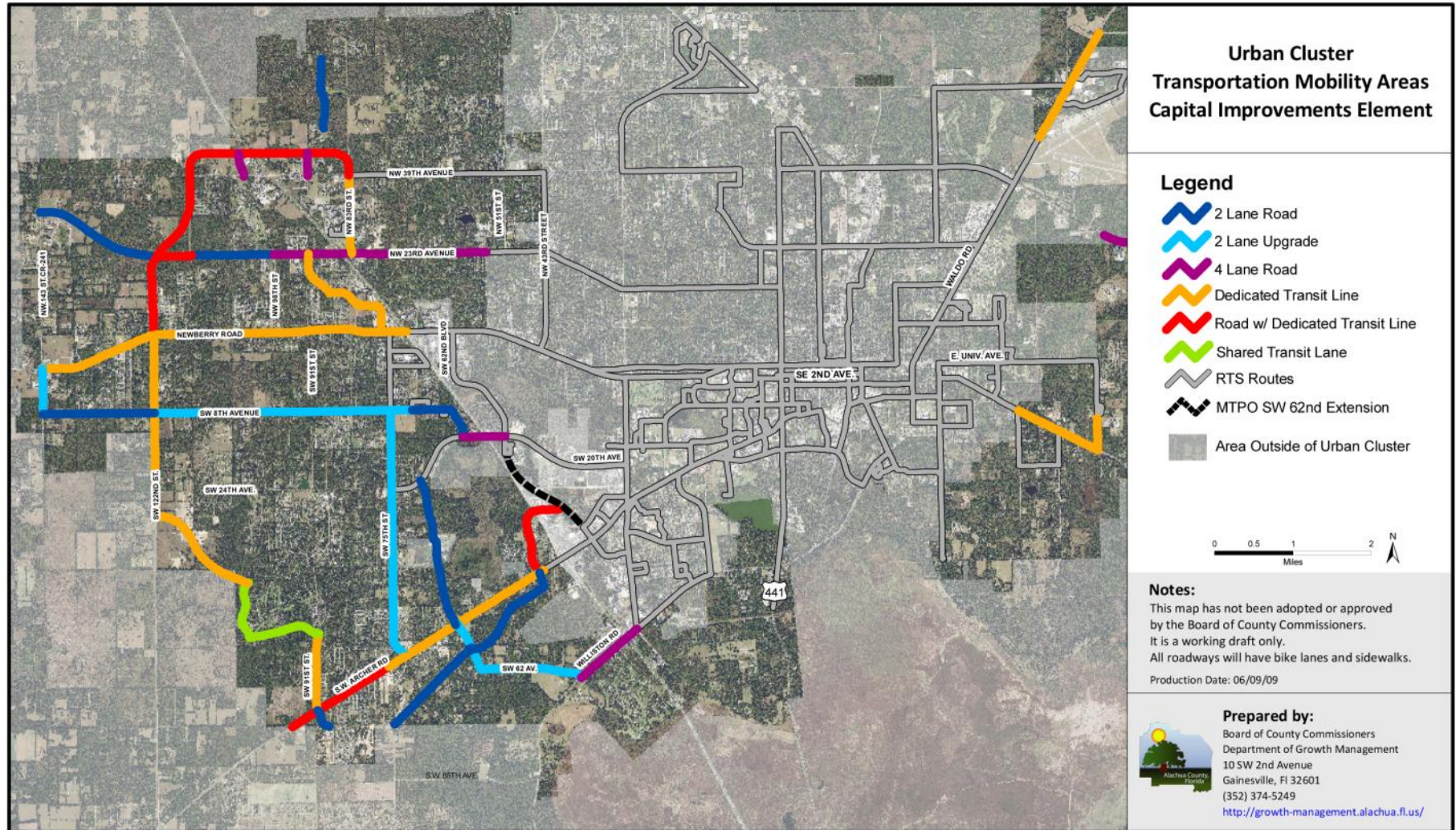
**PROACTIVE
VS
REACTIVE**



BICYCLE / PEDESTRIAN FACILITIES



CONNECTIVITY & MOBILITY



LRT – LIKE RAIL TRANSIT

FOCUS RESOURCES ON BRT CORRIDORS

DEDICATED LANES START IN 2020

TOD & TND BUILD LANES ON SITE

SENSE OF PERMANENCY

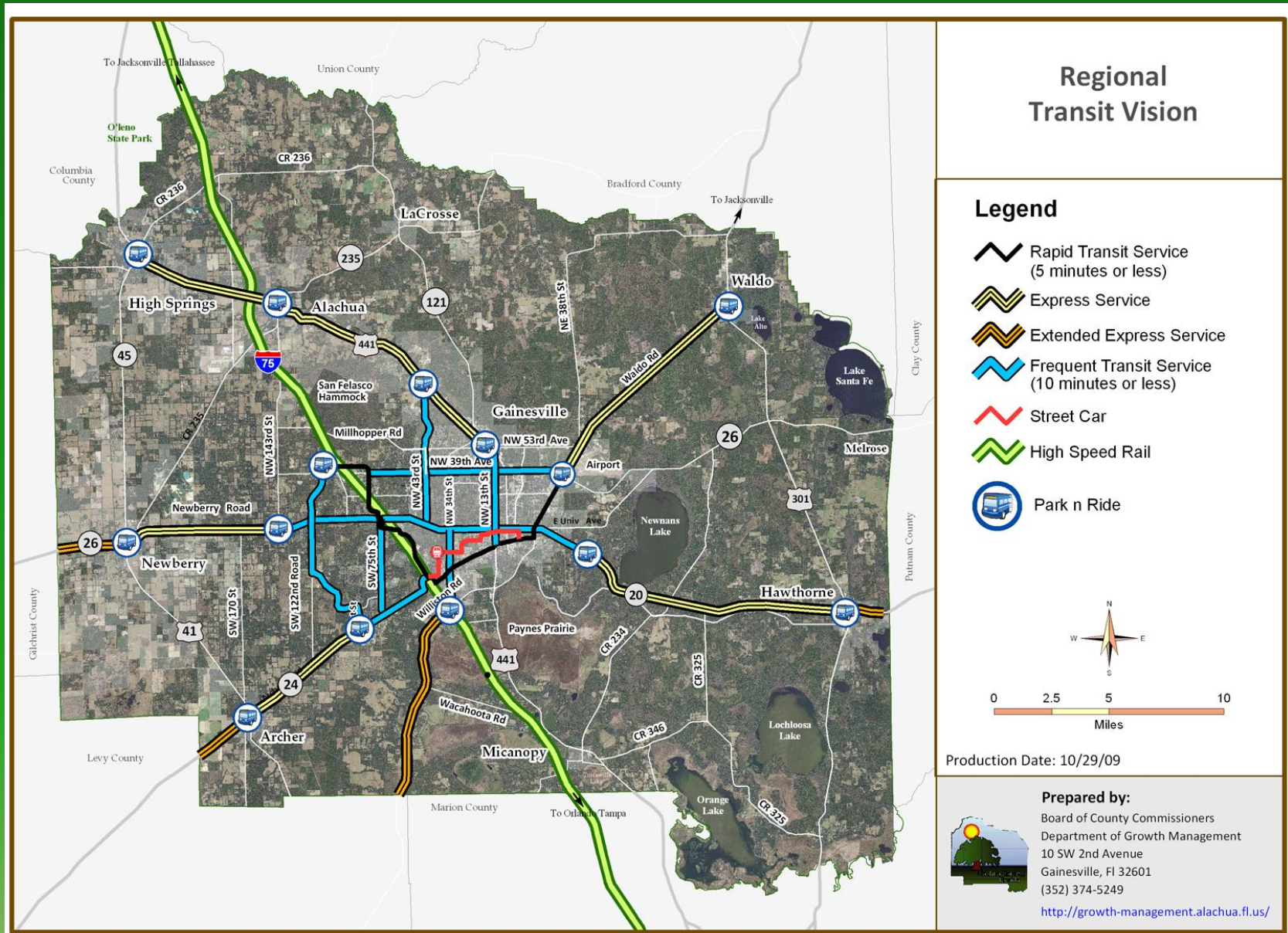
LAND USE  TRANSPORTATION

150 Units  ON LANES MUST BE TOD / TND






PUTTING REGIONAL BACK IN RTS



MULTIMODAL TRANSPORTATION FEE

- **USE EXISTING IMPACT FEE FORMAT**
- **VMT & CONSUMPTION BASED**
- **SIMPLE LOOK UP TABLE**
- **INFRASTRUCTURE – MOBILITY PLAN**
- **TOD & TND  IC & MODE SHARE  FEE**
- **TOD FUNDS TRANSIT SERVICE**

INFRASTRUCTURE SALES TAX

- **1 CENT = \$38 MILLION/YEAR**
COUNTY'S SHARE = \$18 MILLION/YEAR
- **1/2 CENT = \$19 MILLION/YEAR**
COUNTY'S SHARE = \$9 MILLION/YEAR
- **1/4 CENT = \$9.5 MILLION/YEAR**
COUNTY'S SHARE = \$4.25 MILLION/YEAR
- **LEVERAGE STATE/FEDERAL FUNDING**

CHARTER COUNTY TRANSPORTATION SALES TAX

**ALACHUA COUNTY AUTHORIZED TO LEVY
UP TO 1 CENT SALES TAX FOR TRANSIT
CAPITAL AND OPERATIONS BEYOND CAP**

- **COUNTYWIDE REFERENDUM**
- **1X MOBILITY FEE NOT RELIABLE**
- **NEED RECURRING REVENUE SOURCE**

ADDITIONAL FUNDING SOURCES

- **BACKLOG AUTHORITY**
- **REGIONAL TRANSPORTATION AUTHORITY**
- **REGIONAL TRANSIT ASSESSMENT**
- **UF/SANTA FE COLLEGE FUNDING**
- **STATE/FEDERAL**
- **PUBLIC/PRIVATE PARTNERSHIPS**
- **FUTURE VMT & CARBON TAX**

QUESTIONS COMMENTS

<http://growth-management.alachuacounty.us>

CPA 01-09 Mobility