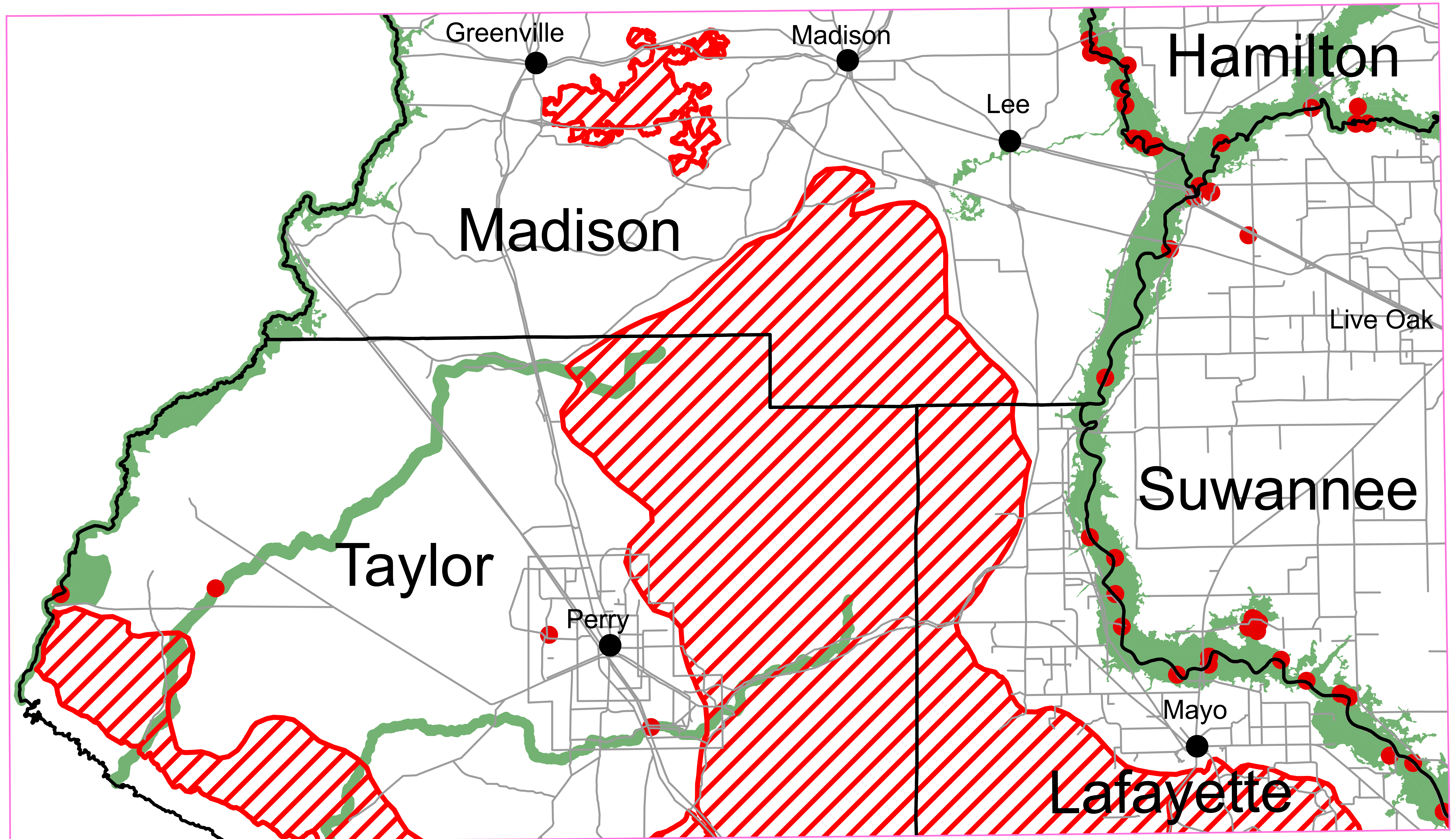




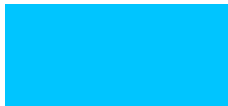


REGIONALLY SIGNIFICANT NATURAL RESOURCES
SURFACE WATER RESOURCES
NORTH CENTRAL FLORIDA REGIONAL PLANNING DISTRICT

Perry



-  County Boundaries
-  Springs
-  Fresh Water Wetlands
-  River Corridors
-  Lakes

For planning purposes only. The map has been prepared as part of a strategic regional planning program and should be used only in conjunction with the text of the NORTH CENTRAL FLORIDA STRATEGIC REGIONAL POLICY PLAN. It is inappropriate to use this map for the review of development proposals or permits. The information does not, nor should it be interpreted to, represent the jurisdictional limits of any federal, state, or local regulatory program. The delineation of resources on this map is not intended to establish the future geographical scope of such programs.

SOURCE:
Fresh Water Wetlands - National Wetlands Inventory, 2012.
River Corridors - Suwannee River Water Management District, 2001.
Federal Emergency Management Agency Flood Insurance Rate Maps, 2006-2013.
Springs - Florida Department of Environmental Protection, 2015.



**North
Central
Florida
Regional
Planning
Council**
August 23, 2018

