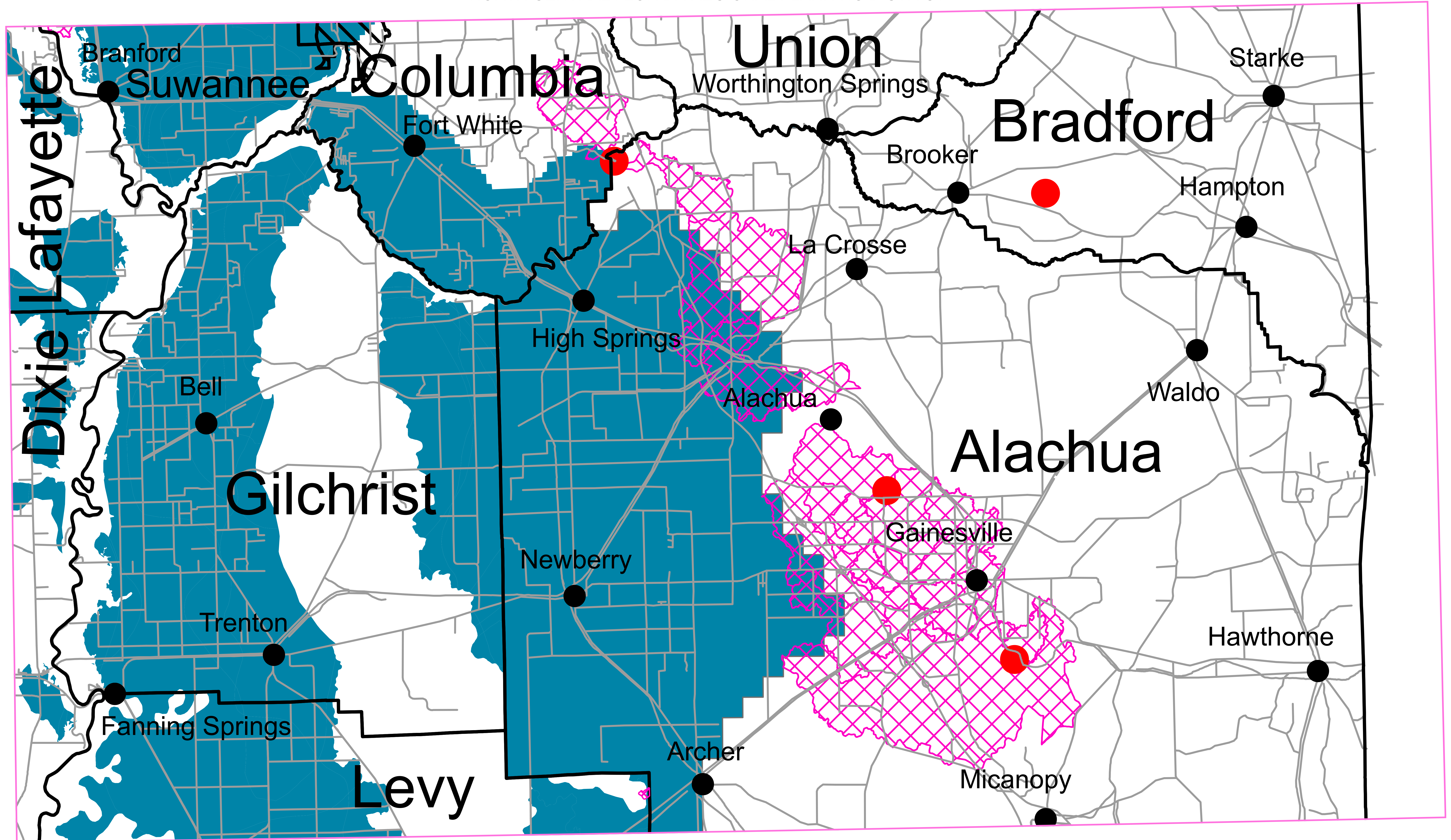


REGIONALLY SIGNIFICANT NATURAL RESOURCES

GROUND WATER RESOURCES

NORTH CENTRAL FLORIDA REGIONAL PLANNING DISTRICT

Gainesville



- County Boundaries
- Sinks
- Stream-to-Sink Watershed
- Ichetucknee Trace
- Areas of High Recharge Potential to the Floridan Aquifer

For planning purposes only. The map has been prepared as part of a strategic regional planning program and should be used only in conjunction with the text of the NORTH CENTRAL FLORIDA STRATEGIC REGIONAL POLICY PLAN. It is inappropriate to use this map for the review of development proposals or permits. The information does not, nor should it be interpreted to, represent the jurisdictional limits of any federal, state, or local regulatory program. The delineation of resources on this map is not intended to establish the future geographical scope of such programs.

SOURCE:
Sinks - Florida Department of Environmental Protection, 2015.
Ichetucknee Trace - Columbia County Comprehensive Plan, 1999.
Stream-to-Sink Watersheds - Alachua county, 2009, Suwannee River Water Management District, 2001, Florida Department of Environmental Protection, 2008.
Areas of High Recharge Potential to the Florida Aquifer - Alachua County, 2009, Columbia County, 2009, Suwannee River Water Management District, 2001, St. John's River Water Management District, 2015, Southwest Florida Water Management District, 2002.



**North
Central
Florida
Regional
Planning
Council**
August 23, 2018

