

# North Central Florida Strategic Regional Policy Plan Summary

Regional Goals and Policies  
Regionally Significant Facilities and Resources  
Maps of Natural Resources of Regional Significance

August 2018



North Central Florida  
Regional Planning Council





# North Central Florida Strategic Regional Policy Plan Summary

Regional Goals and Policies

Regionally Significant Facilities and Resources

Maps of Natural Resources of Regional Significance

August 2018

North Central Florida Regional Planning Council  
2009 NW 67th Place  
Gainesville, Florida 32653-1603  
352.955.2200

Adopted May 23, 1996

Amended August 28, 1997, February 27, 2003, October 27, 2011 and August 23, 2018







# Table of Contents

**Chapter**

I      Affordable Housing..... I-1

II     Economic Development ..... II-1

III    Emergency Preparedness ..... III-1

IV    Natural Resources of Regional Significance ..... IV-1

V     Regional Transportation ..... V-1

VI    Regionally Significant Facilities And Resources ..... VI-1

VII   Coordination Outline ..... VII-1

**Appendix**

C.     Maps of Natural Resources of Regional Significance ..... C-1



THIS PAGE LEFT BLANK INTENTIONALLY



# Chapter I

## Affordable Housing

Adopted May 23, 1996. Amended August 28, 1997, February 27, 2003, October 27, 2011 and August 23, 2018



THIS PAGE LEFT BLANK INTENTIONALLY



## B. Problems, Needs and Opportunities

The Council identifies the following affordable housing problems, needs, and opportunities:

1. A need exists to reduce the percentage of the region's very low-, low-, and moderate-income households who spend more than 30 percent of their annual household income on housing.

## C. Regional Goals and Policies

**REGIONAL GOAL 1.1.** Reduce the percentage of the region's very low-, low-, and moderate-income households spending 30.0 percent or more of their annual household income on housing.

### Regional Indicators

1. 92.6 percent of north central Florida year 2015 renter households with 2014 annual incomes of less than \$20,000 per year spent 30.0 percent or more of their 2014 annual income on gross rent.
2. 71.0 percent of north central Florida year 2015 renter households with 2014 annual incomes between \$20,000 and 34,999 per year spent 30.0 percent or more of their 2014 annual income on gross rent.
3. 59.0 percent of north central Florida year 2015 homeowner households with 2014 annual incomes of less than \$20,000 per year spent 30.0 percent or more of their 2014 annual income on housing.
4. 24.3 percent of north central Florida year 2015 homeowner households with 2014 annual incomes between \$20,000 and \$34,999 per year spent 30.0 percent or more of their 1999 annual income on housing.

**Policy 1.1.1.** Encourage the development of policies within local government comprehensive plans which provide incentives or otherwise provide for the construction of affordable housing units in a manner which results in a dispersal of affordable housing units throughout the urban areas of the local government's jurisdiction.

**Policy 1.1.2.** Provide incentives, such as density bonuses, to private builders of residential dwelling units who construct 10.0 percent or more of their units for very low-, low-, and moderate-income households within urban areas.

**Policy 1.1.3.** Provide technical assistance to local governments for the revision of Housing Elements contained in local government comprehensive plans.

**Policy 1.1.4.** Provide assistance to local governments in the development of Community Development Block Grant housing applications.







# Chapter II

## Economic Development

Adopted May 23, 1996, Amended August 28, 1997, February 27, 2003, October 27, 2011 and August 23, 2018



THIS PAGE LEFT BLANK INTENTIONALLY

## C. Goals and Objectives

The Economic Development Element establishes the goals and policies necessary to solve the economic problems and capitalize on the resources of the region. The goals and policies are organized using the Florida Chamber Foundation's Six Pillars of Florida's Future Economy.

### 1. Talent Supply and Education

**REGIONAL GOAL 2.1.** Connect and align education and workforce development programs to develop the region's current and future talent supply chain and meet employer needs.

**Regional Indicator**

For the 2014- 2015 school year, the high school graduation rate of the region was 74.3 percent.

**Policy 2.1.1.** Expand options for high school students to become industry certified while still in high school, as an alternative to college path.

**Policy 2.1.2.** Integrate education, training and workforce development to develop a strong supply chain.

**Policy 2.1.3.** Support efforts by Florida Gateway College, North Florida Community College, Santa Fe College, CareerSource Crown, CareerSource North Florida and CareerSource North Central Florida to expand education programs in healthcare related fields and create a marketing strategy to promote enrollment in health professions programs.

**Policy 2.1.4.** Support the creation of electronic medical records education and training programs utilizing a regional community-adaptive health information technology model.

**REGIONAL GOAL 2.2** Expand access to education and training programs for talent in distressed markets (e.g., rural, urban core) throughout the region.

**Policy 2.2.1.** Support the creation of online and distance learning programs for students that lack other means of attaining necessary training.

**Policy 2.2.2.** Support the development of educational programs to increase the labor force in the healthcare and life sciences industry.



## 2. Innovation and Economic Development

**REGIONAL GOAL 2.3.** Grow, sustain and integrate efforts related to research and development, technology commercialization, and seed capital, to create, nurture and expand regional innovation businesses.

### Regional Indicator

In 2015, there were 12,056 jobs in the region in the Professional, Scientific, and Technical Enterprises industry.

**Policy 2.3.1.** Support development of the Innovation Square research and development park in Gainesville, the integration of the University of Florida's research enterprise and commercialization programs into the fabric of the Innovation Square project through the Florida Innovation Hub at the University of Florida and Progress Park in Alachua.

**Policy 2.3.2.** Support the development of existing and new business incubators and accelerators throughout the region such as the Gainesville Technology Entrepreneurship Center, the Santa Fe Center for Innovation and Economic Development in Gainesville and the Sid Martin Biotechnology Incubator in Alachua.

**Policy 2.3.3.** Support the development of existing and new industrial parks throughout the region such as Cornerstone in Gainesville..

**REGIONAL GOAL 2.4.** Increase the number of regional businesses engaged in selling goods and services internationally and the diversification of the markets they serve.

### Regional Indicators

In 2015, the region experienced a net trade export deficit of goods and services of \$294 million.

**Policy 2.4.1.** Provide educational opportunities to regional businesses interested in international trade on the advantages of exporting their goods and services.

**REGIONAL GOAL 2.5.** Brand and market the north central Florida region as the best location for business.

### Regional Indicator

As of January 2016, the North Central Florida Regional Planning Council was a member of the North Florida Economic Development Partnership.

**Policy 2.5.1.** Support the North Florida Economic Development Partnership asset mapping and geographic information system projects in the region.





**Policy 2.5.5.** Support the development of the Enterprise Florida/Rural Economic Development Initiative Catalyst Sites located in Columbia County and Suwannee County by pursuing funding sources for the infrastructure necessary to develop the catalyst sites to shovel ready status.

**REGIONAL GOAL 2.6.** Promote the continued viability of military installations in close proximity to the region.

**Regional Indicator**

As of January 2016 the North Central Florida Regional Planning Council continues to review local government comprehensive plans, plan amendments, and other items for adverse impacts to military installations either within or in close proximity to the region.

**Policy 2.6.1.** Improve collaboration between local government and military leaders to utilize best management practices that ensure successful economic partnerships.

**Policy 2.6.2.** Support the development of the catalyst sites for the North Central Florida Rural Area of Opportunity.

**Policy 2.6.3.** Support the development and expansion of regional business incubators and research parks.

### 3. Infrastructure and Growth Leadership

**REGIONAL GOAL 2.7.** Modernize the transportation, telecommunications, energy, water and wastewater systems of the region to meet future demand and respond to changing business needs.

**Regional Indicator**

As of 2015, the nonresidential actual capital stock of the region was valued at \$19.6 billion.

**Policy 2.7.1.** Support the development of diverse, reliable and cost effective energy sources and systems to meet the region's economic and environmental goals.

**Policy 2.7.2.** Ensure the future supply and quality of water to meet the region's economic and quality of life goals by encouraging the use of the groundwater resources of the region in a sustainable manner and by strengthening local control of area surface and groundwater systems and supplies.

**Policy 2.7.3.** Develop and maintain a cutting-edge telecommunications infrastructure by supporting initiatives to bring high-speed internet service to the rural areas of the region.

**Policy 2.7.4.** Develop and maintain multimodal, interconnected trade, logistics and transportation systems to enhance freight mobility in support of a prosperous, competitive economy.

**Policy 2.7.5.** Support the continued development of the Gainesville Regional Airport as part of the State's Strategic Intermodal System and promote the designation of the Lake City Municipal Airport as part of the State's Strategic Intermodal System.

**REGIONAL GOAL 2.8.** Improve coordination of economic development, land use, infrastructure, water, energy, natural resources, workforce and community development decision-making and investments at the regional level.

**Regional Indicator**

As of January 2016, the North Central Florida Regional Planning Council continues to review local government comprehensive plans, applications for federal funds and direct federal actions for adverse impacts to Natural Resources of Regional Significance, regional facilities, and affected local governments.

**Policy 2.8.1.** Improve collaboration and alignment between regional and local agencies and business leaders through a regional vision.

**Policy 2.8.2.** Support continuing improvements to multi-modal infrastructure, including highway interchanges along interstate corridors, railway corridors, airport facilities and broadband infrastructure.

**Policy 2.8.3.** Identify economic development projects that may qualify for federal and state funding opportunities and provide grant writing and administrative services where needed.

**Policy 2.8.4.** Provide technical assistance in the form of economic impacts analysis, research and best practices to local economic development organizations and government agencies.

**Policy 2.8.5.** Facilitate coordination between regional economic development strategies and the state five-year economic development plan.

## 4. Business Climate and Competitiveness

**REGIONAL GOAL 2.9.** Streamline permitting, development and other regulatory processes at the local level to meet changing business needs and provide a predictable legal and regulatory environment in the region.

**Regional Indicator**

As of January 2016, the North Central Florida Strategic Regional Policy Plan contains goals and policies encouraging the streamlining of permitting and regulatory processes.

**Policy 2.9.1.** Reduce barriers to small business and entrepreneurial growth.

**Policy 2.9.2.** Develop a government revenue structure that encourages business growth and development.



**Regional Goal 2.10.** Ensure local government agencies provide collaborative, seamless, consistent and timely customer service to regional businesses.

**Regional Indicator**

As of January 2016, the North Central Florida Strategic Regional Policy Plan contains goals and policies encouraging the streamlining of permitting and regulatory processes.

**Policy 2.10. 1.** Work with water management districts in the region to simplify permitting process for new and expanding businesses.

**REGIONAL GOAL 2.11.** Expand opportunities for access to capital for businesses throughout their life cycle.

**Regional Indicator**

As of January 2016, the Council reviews applications for federal grants and loans.

**Policy 2.11.1.** Create a database of capital sources available to regional businesses.

**REGIONAL GOAL 2.12.** To enhance the resilience of the north central Florida economy in the face of natural disasters and changes to the national and state economies through increased awareness and preparation by businesses for environmental risks.

**Regional Indicator**

As of January 2016, all north central Florida local governments are signatories to the Statewide Mutual Aid Agreement for Catastrophic Disaster Response and Recovery.

**Policy 2.12.1.** Educate government and businesses on continuity and recovery plans in the event of natural or man-made disasters to address workforce retention and ensure access to loan and other assistance programs.

## 5. Civic and Governance Systems

**REGIONAL GOAL 2.13.** Support and sustain regional partnerships to accomplish the region's economic and quality of life goals.

**Regional Indicators**

1. As of January 2016, the North Central Florida Regional Planning Council is a member of the North Florida Economic Development Partnership as well as the Florida Economic Council.
2. As of January 2016, the North Central Florida Regional Planning Council serves as staff to the Metropolitan Transportation Planning Organization for the Gainesville Urbanized Area, the North Central Florida Comprehensive Economic Development Strategy Committee and The Original Florida Tourism Task Force.

Adopted May 23, 1996, Amended August 28, 1997, February 27, 2003, October 27, 2011 and August 23, 2018



**Policy 2.13.1.** Utilize the North Florida Economic Development Partnership's Economic Development Academy as a vehicle to provide a functional understanding of economic development concepts to local elected officials.

**Policy 2.13.2.** Work with the Florida Association of Counties and the Florida League of Cities to add economic development information to their curriculums for newly elected officials.

**Policy 2.13.3.** Invest in strategic regional economic development priorities.

**Policy 2.13.4.** Support programs to educate local government officials in the fundamentals of economic development

**Policy 2.13.5.** Conduct regular meetings of the Comprehensive Economic Development Strategy Committee to monitor the status of regional projects and Comprehensive Economic Development Strategy implementation. District staff will actively participate in economic development activities in the region and provide technical assistance when needed.

**Policy 2.13.6.** Support the North Florida Economic Development Partnership and the development of the North Central Florida Rural Area of Opportunity Catalyst Sites in Columbia and Suwannee Counties by serving on the Partnership's Board of Directors and providing technical assistance when necessary.

## 6. Quality of Life and Quality Places

**REGIONAL GOAL 2.14.** Ensure future growth and development decisions maintain a balance between sustaining the region's environment and enhancing the region's economy and quality of life.

### Regional Indicator

As of January 2016, the North Central Florida Regional Planning Council continues to review local government comprehensive plans, applications for federal funds and direct federal actions for adverse impacts to Natural Resources of Regional Significance, regional facilities, and affected local governments.

**Policy 2.14.1.** Create and sustain vibrant, healthy communities that attract workers, businesses, residents and visitors to the region.

**Policy 2.14.2.** Promote and incentivize local government in the development of vibrant city centers.

**REGIONAL GOAL 2.15.** Promote, develop, and leverage the region's natural and cultural assets in a sustainable manner.

### Regional Indicator

As of January 2016, the North Central Florida Regional Planning Council provides staff services to The Original Florida Tourism Task Force.

Adopted May 23, 1996, Amended August 28, 1997, February 27, 2003, October 27, 2011 and August 23, 2018



**Policy 2.15.1.** Support the efforts of the Original Florida Tourism Task Force and other regional tourism marketing organizations to develop sustainable tourism-based economic development programs and increase the entrepreneurial capacity of the hospitality industry.

**Policy 2.15.2.** Improve the branding and awareness of the region as a tourism destination by leveraging regional resources with VISIT FLORIDA, the State's official tourism marketing organization.

**Policy 2.15.3.** Promote and support the state parks within the region and improve branding and awareness of the parks as a tourist destination.

**Policy 2.15.4.** Promote sustainable economic development through regional tourism promotion, while encouraging the preservation of resources that bring visitors to the area. The North Central Florida Economic Development District will provide professional staffing services to the Original Florida Tourism Task Force to implement their regional marketing strategies.





# Chapter III

## Emergency Preparedness

Adopted May 23, 1996, Amended August 28, 1997, February 27, 2003, October 27, 2011 and August 23, 2018



THIS PAGE LEFT BLANK INTENTIONALLY



## C. Regional Goals and Policies

**REGIONAL GOAL 3.1.** Improve emergency preparedness for coastal storms in the region.

### Regional Indicators

1. As of 2015, one Coastal-Marine Automated Network coastal weather station is located in Keaton Beach, no weather buoys are located in the Gulf of Mexico between 10 and 50 miles of Steinhatchee, three weather buoys are located between 51 and 100 miles of Steinhatchee, two weather buoys are located between 101 and 150 miles of Steinhatchee, and four weather buoys are located in the Gulf of Mexico between 151 to 175 miles of Steinhatchee.
2. As of 2015, National Oceanic and Atmospheric Administration weather radio transmissions covered approximately 97 percent of the region.
3. As of 2015, eight National Oceanic and Atmospheric Administration weather radio stations serve north central Florida.
4. As of 2015, three north central Florida coastal communities (Dekle Beach, Keaton Beach and Steinhatchee) had emergency warning sirens.
5. As of 2015, Dixie County had a Level E In-county clearance time of 13.0 hours.
6. As of 2015, Taylor County had a Level E In-county clearance time of 14.5 hours.
7. As of 2015 Levy County had a Level E In-county clearance time of 13.0 hours.
8. As of 2015, the American Red Cross 4496-Compliant Risk Public Shelter Capacity for the region was 44,958.

**Policy 3.1.1.** Install weather monitoring buoys or other meteorological instruments at 100, 50, and 10 mile locations in the Gulf of Mexico spaced approximately 50 miles apart along the west Florida coastline from Pinellas to Franklin counties.

**Policy 3.1.2.** Establish National Oceanic and Atmospheric Administration weather radio station radio coverage for all of north central Florida.

**Policy 3.1.3.** Establish emergency warning sirens for north central Florida coastal communities.

**Policy 3.1.4.** Maintain up-to-date hurricane evacuation and inland hurricane shelter plans for north central Florida.

**Policy 3.1.5.** With the exception of enhancements necessary for the health, safety, and welfare of its residents, avoid the expenditure of state funds that subsidize development in Coastal High Hazard Areas.

**Policy 3.1.6.** Complete public shelter surveys to determine their compliance status with American Red Cross Publication 4496 guidelines in order to determine the public shelter Risk Capacity for the region.

Adopted May 23, 1996, Amended August 28, 1997, February 27, 2003, October 27, 2011 and August 23, 2018



**Policy 3.1.7.** Determine the public shelter Risk Capacity net surplus/deficit for all north central Florida counties.

**Policy 3.1.8.** Encourage local governments to include in their comprehensive plans to require an analysis of public shelter capacity and evacuation times of new development locating within the Coastal High Hazard Area and within coastal storm evacuation areas to ensure that such development is adequately notified of an approaching storm, evacuated in a timely fashion and does not adversely impact public shelter capacity.

**REGIONAL GOAL 3.2.** Participation by all north central Florida local governments in the National Flood Insurance Program.

#### **Regional Indicators**

1. As of 2015, 56 of the 58 local governments in the region with mapped flood hazard areas within their jurisdictions participated in the National Flood Insurance Program.
2. As of 2015, National Flood Insurance Rate Maps are available for all north central Florida local governments.
3. As of 2015, two north central Florida local governments do not contain mapped flood hazard areas within their jurisdictions.

**Policy 3.2.1.** Maintain local government eligibility for the Federal Emergency Management Agency Flood Insurance program.

**Policy 3.2.2.** Assist non-participating north central Florida local governments whose jurisdictions contain floodable area to become eligible and apply for the National Flood Insurance Program.

**Policy 3.2.3.** Request the Federal Emergency Management Agency to prepare National Flood Insurance Rate Maps for north central Florida municipalities for which such maps have not been prepared.

**REGIONAL GOAL 3.3.** Reduce response times of regional hazardous materials response teams to 60 minutes for hazardous materials emergencies in Perry and Greenville.

#### **Regional Indicators**

1. As of 2015, a hazardous materials commodity flow study was completed to determine the types and amounts of hazardous materials moving via highways in the region.
2. As of 2015, North Central Florida Regional Hazardous Materials Response Team had four active hazardous materials response units located in the Cities of Cross City, Gainesville, Lake City, and Live Oak.

**Policy 3.3.1.** Establish a regional hazardous materials response team in or near the City of Perry.

**Policy 3.3.2.** Provide state funding for regional hazardous materials emergency response teams.





**Policy 3.3.3.** Promote coordination among Valdosta, Georgia, Dothan, Alabama, Tallahassee, Florida and north central Florida local governments to provide hazardous materials emergency response services with response times of 60 minutes or less to Madison County.

**REGIONAL GOAL 3.4.** Improve the ability of emergency response teams to respond to hazardous materials emergencies.

**Regional Indicators**

1. As of 2015, two hazardous materials commodity flow studies were completed to determine the types and amounts of hazardous materials moving via highways in the region.
2. As of 2015, no commodity flow studies have been undertaken to determine the types and amounts of hazardous materials moving via railroads in the region.

**Policy 3.4.1.** Conduct a commodity flow study to determine the types and amounts of hazardous materials moving via railroads located in the region.

**Policy 3.4.2.** Continue to provide technical assistance to local governments in the preparation of their hazardous materials response plans.

**Policy 3.4.3.** Continue to serve as staff to the North Central Florida Local Emergency Planning Committee.

**Policy 3.4.4.** Provide local emergency dispatch operators with a summary of hazards analysis information so as to inform responders as to what types of hazardous materials at the scene of the emergency.

**Policy 3.4.5.** Provide training to local emergency personnel for dealing with hazardous materials emergencies.

**Policy 3.4.6.** Keep the general public informed of potential hazardous materials dangers facing their communities by promoting annual hazardous materials spill prevention week programs.

**REGIONAL GOAL 3.5.** All north central Florida local governments are signatories to the Statewide Mutual Aid Agreement for Catastrophic Disaster Response and Recovery.

**Regional Indicator**

As of January 2015, 58 north central Florida local governments have adopted the Statewide Mutual Aid Agreement for Catastrophic Disaster Response and Recovery.

**Policy 3.5.1.** Actively promote north central Florida local governments to adopt the statewide mutual aid agreement for catastrophic disaster response and recovery.





# Chapter IV

## Natural Resources of Regional Significance

Adopted May 23, 1996, Amended August 28, 1997, February 27, 2003, October 27, 2011 and August 23, 2018



THIS PAGE LEFT BLANK INTENTIONALLY



Maps of Natural Resources of Regional Significance included in the regional plan vary widely in terms of accuracy. Some coverages, such as the Suwannee River Corridor, were imported directly into the Council's computerized geographic information system from the Suwannee River Water Management District. Coverages (maps) which are directly imported from one geographic information system to another represent the most accurate coverages contained in the regional plan. While reasonably accurate for purposes of presentation in the regional plan, they should not be used as a substitute for the source maps from which they were derived.

**TABLE 4.1**

**NATURAL RESOURCES OF REGIONAL SIGNIFICANCE**

Map Layer	Classification	Name	Acreage
<b>Coastal and Marine Resources</b>	Big Bend Salt Marsh	Big Bend Salt Marsh	72,641.34
<b>Coastal and Marine Resources</b>	Big Bend Seagrass Beds	Big Bend Seagrass Beds	902,381.62
<b>Coastal and Marine Resources</b>	Florida Middle Ground	Florida Middle Ground	132,000.00
<b>Groundwater Resources</b>	Areas of High Recharge Potential to the Floridan Aquifer	Areas of High Recharge Potential to the Floridan Aquifer	1,180,502.52
<b>Groundwater Resources</b>	Floridan Aquifer	Floridan Aquifer	5,154,958.96
<b>Groundwater Resources</b>	Ichetucknee Trace	Ichetucknee Trace	10,767.00
<b>Groundwater Resources</b>	Sinks	Alachua Sink	1.00
<b>Groundwater Resources</b>	Sinks	Aucilla River Sinks	2,000.00
<b>Groundwater Resources</b>	Sinks	Brooks Sink	1.00
<b>Groundwater Resources</b>	Sinks	Clay Sink	1.00
<b>Groundwater Resources</b>	Sinks	Devil's Millhopper	1.00
<b>Groundwater Resources</b>	Sinks	O'lono Sink	1.00
<b>Groundwater Resources</b>	Sinks	Rose Sink	1.00
<b>Groundwater Resources</b>	Sinks	Saylor Sink	1.00
<b>Groundwater Resources</b>	Stream-to-Sink Watershed	Sinking Branch	1,596.00
<b>Groundwater Resources</b>	Stream-to-Sink Watershed	Cannon Creek/Columbia Rose Creek/ Clay Hole Creek	34,303.00
<b>Groundwater Resources</b>	Stream-to-Sink Watershed	Indian Mound Swamp/ South Falling Creek/ Turkey Prairie	30,759.00
<b>Groundwater Resources</b>	Stream-to-Sink Watershed	Little River	35,639.00

Adopted May 23, 1996, Amended August 28, 1997, February 27, 2003, October 27, 2011 and August 23, 2018



TABLE 4.1 (Continued)

NATURAL RESOURCES OF REGIONAL SIGNIFICANCE

Map Layer	Classification	Name	Acreage
Groundwater Resources	Stream-to-Sink Watershed	Norton Creek	9,337.00
Groundwater Resources	Stream-to-Sink Watershed	Alachua Slough/Blues Creek/Burnett Lake/Mill Creek Sink/Hammock Branch/North Alachua/Pareners Branch/Turkey Creek	41,954.00
Groundwater Resources	Stream-to-Sink Watershed	Unnamed basin on Marion-Levy border	56,193.24
Groundwater Resources	Stream-to-Sink Watershed	Priest Prairie Drain	43,132.61
Natural Systems	State Ecological Greenways Network	Regional Ecological Greenways Network	1,861,136
Planning & Resource Management Areas	Private Lands	n/a	5,861.31
Planning & Resource Management Areas	Public Lands	Aucilla River Sinks	1,097.00
Planning & Resource Management Areas	Public Lands	Austin Cary Memorial Forest	2,076. 30
Planning & Resource Management Areas	Public Lands	Big Bend Wildlife Management Area	90,662.59
Planning & Resource Management Areas	Public Lands	Big Gum Swamp National Wilderness Area	3,374.00
Planning & Resource Management Areas	Public Lands	Big Shoals State Forest	1,636.04
Planning & Resource Management Areas	Public Lands	Lafayette Blue Springs State-Park	713.74
Planning & Resource Management Areas	Public Lands	Cedar Key National Wildlife Refuge	624.49
Planning & Resource Management Areas	Public Lands	Cedar Key Scrub State Reserve	4,531.04
Planning & Resource Management Areas	Public Lands	Other Local Government Conservation Areas	22,830.32
Planning & Resource Management Areas	Public Lands	Devil's Millhopper Geologic State Park	6724
Planning & Resource Management Areas	Public Lands	Econfina River State Park	4,375.73
Planning & Resource Management Areas	Public Lands	Goethe State Park	52,957.81
Planning & Resource Management Areas	Public Lands	Gum Root Park	371.80
Planning & Resource Management Areas	Public Lands	Ichetucknee Springs State Park	2,531.97

Adopted May 23, 1996, Amended August 28, 1997, February 27, 2003, October 27, 2011 and August 23, 2018



TABLE 4.1 (Continued)

NATURAL RESOURCES OF REGIONAL SIGNIFICANCE

Map Layer	Classification	Name	Acreage
Planning & Resource Management Areas	Public Lands	Lake Alto Preserve	672.00
Planning & Resource Management Areas	Public Lands	Lochloosa Wildlife Conservation Area	10,659.68
Planning & Resource Management Areas	Public Lands	Lower Suwannee River National Wildlife Refuge	53,333.83
Planning & Resource Management Areas	Public Lands	Newnans Lake State Forest	1,004
Planning & Resource Management Areas	Public Lands	Okefenokee National Wildlife Refuge	0.00
Planning & Resource Management Areas	Public Lands	O'leno State Park	2,372.41
Planning & Resource Management Areas	Public Lands	Osceola National Forest	114,199.13
Planning & Resource Management Areas	Public Lands	Paynes Prairie Preserve State Park	21,561.72
Planning & Resource Management Areas	Public Lands	Peacock Springs Conservation Area	1,115. 19
Planning & Resource Management Areas	Public Lands	River Rise State Preserve	3,827.20
Planning & Resource Management Areas	Public Lands	St. Marks National Wildlife Refuge	1,293.06
Planning & Resource Management Areas	Public Lands	San Felasco Hammock State Preserve	7,358.48
Planning & Resource Management Areas	Public Lands	Santa Fe Swamp Conservation Area	7,368.47
Planning & Resource Management Areas	Public Lands	Stephen Foster State Folk Cultural Center	903.90
Planning & Resource Management Areas	Public Lands	Suwannee River State Park	1,929.71
Planning & Resource Management Areas	Public Lands	Upper Alapaha Conservation Area	2,036.82
Planning & Resource Management Areas	Public Lands	Waccasassa Bay Preserve State Park	4,531.04
Planning & Resource Management Areas	Public Lands	Water Management District Easements	136,643.35

Adopted May 23, 1996, Amended August 28, 1997, February 27, 2003, October 27, 2011 and August 23, 2018



**TABLE 4.1 (Continued)**  
**NATURAL RESOURCES OF REGIONAL SIGNIFICANCE**

<b>Planning &amp; Resource Management Areas</b>	Public Lands	Other Water Management District Lands	149,474.39
<b>Planning &amp; Resource Management Areas</b>	Public Lands	Other State Lands	50,483.20
<b>Planning &amp; Resource Management Areas</b>	Public Lands	Other Federal Lands	682.44
<b>Planning &amp; Resource Management Areas</b>	Surface Water Improvement Management Waterbodies	Newnans Lake	6,019.00
<b>Planning &amp; Resource Management Areas</b>	Surface Water Improvement Management Waterbodies	Waccasassa River	200.00
<b>Planning &amp; Resource Management Areas</b>	Surface Water Improvement Management Waterbodies	Withlacoochee River - Citrus/Levy	347.30
<b>Planning &amp; Resource Management Areas</b>	Surface Water Improvement Management Waterbodies	Withlacoochee River - Hamilton/Madison	14,004.24
<b>Surface Water Systems</b>	Fresh Water Wetlands	Bee Haven Bay	7,125.00
<b>Surface Water Systems</b>	Fresh Water Wetlands	California Swamp	21,786.00
<b>Surface Water Systems</b>	Fresh Water Wetlands	Dixie County Coastal Fresh Water Wetlands	155,642.00
<b>Surface Water Systems</b>	Fresh Water Wetlands	Gum Root Swamp	1,448.00
<b>Surface Water Systems</b>	Fresh Water Wetlands	Hixtown Swamp	10,289.00
<b>Surface Water Systems</b>	Fresh Water Wetlands	Lake Alto Swamp	1,405.00
<b>Surface Water Systems</b>	Fresh Water Wetlands	Lochloosa Forest	28,451.00
<b>Surface Water Systems</b>	Fresh Water Wetlands	Mallory Swamp	210,399.00
<b>Surface Water Systems</b>	Fresh Water Wetlands	Osceola National Forest/Pinhook Swamp	184,350.00
<b>Surface Water Systems</b>	Fresh Water Wetlands	Paynes Prairie	21,657.00
<b>Surface Water Systems</b>	Fresh Water Wetlands	San Pedro Bay	305,375.00
<b>Surface Water Systems</b>	Fresh Water Wetlands	Santa Fe Swamp	7,403.00
<b>Surface Water Systems</b>	Fresh Water Wetlands	Spring Warrior Swamp	16,039.00
<b>Surface Water Systems</b>	Fresh Water Wetlands	Taylor County Coastal Fresh Water Wetlands	51,731.00
<b>Surface Water Systems</b>	Fresh Water Wetlands	Tide Swamp	15,236.00
<b>Surface Water Systems</b>	Fresh Water Wetlands	Waccasassa Flats	61,653.00
<b>Surface Water Systems</b>	Fresh Water Wetlands	Waccasassa/Gulf Hammock/Goethe	263,772.27
<b>Surface Water Systems</b>	Lakes	Alligator Lake	968.00

Adopted May 23, 1996, Amended August 28, 1997, February 27, 2003, October 27, 2011 and August 23, 2018





**TABLE 4.1 (Continued)**

**NATURAL RESOURCES OF REGIONAL SIGNIFICANCE**

<b>Map Layer</b>	<b>Classification</b>	<b>Name</b>	<b>Acreage</b>
<b>Surface Water Systems</b>	Lakes	Chunky Pond	647.13
<b>Surface Water Systems</b>	Lakes	Lake Butler	436.00
<b>Surface Water Systems</b>	Lakes	Lake Crosby	534.00
<b>Surface Water Systems</b>	Lakes	Lake Geneva	57.76
<b>Surface Water Systems</b>	Lakes	Lake Rowell	357.00
<b>Surface Water Systems</b>	Lakes	Lake Sampson	2,013.00
<b>Surface Water Systems</b>	Lakes	Lake Santa Fe	4,211.00
<b>Surface Water Systems</b>	Lakes	Little Santa Fe Lake	1,096.00
<b>Surface Water Systems</b>	Lakes	Lochloosa Lake	5,629.00
<b>Surface Water Systems</b>	Lakes	Newnans Lake	6,019.00
<b>Surface Water Systems</b>	Lakes	Orange Lake	9,533.00
<b>Surface Water Systems</b>	Lakes	Watermelon Pond	989.00
<b>Surface Water Systems</b>	River Corridors	Alapaha River	9,069.00
<b>Surface Water Systems</b>	River Corridors	Aucilla River	4,059.00
<b>Surface Water Systems</b>	River Corridors	Cross Creek	530.00
<b>Surface Water Systems</b>	River Corridors	Econfina River	11,743.00
<b>Surface Water Systems</b>	River Corridors	Fenholloway River	28,258.85
<b>Surface Water Systems</b>	River Corridors	Ichetucknee River	451.00
<b>Surface Water Systems</b>	River Corridors	Prairie Creek	873.00
<b>Surface Water Systems</b>	River Corridors	River Styx	1,772.00
<b>Surface Water Systems</b>	River Corridors	Santa Fe River	17,868.00
<b>Surface Water Systems</b>	River Corridors	Steinhatchee River	8,983.00
<b>Surface Water Systems</b>	River Corridors	Suwannee River	139,931.12
<b>Surface Water Systems</b>	River Corridors	Waccasassa River	15,037.96
<b>Surface Water Systems</b>	River Corridors	Withlacoochee River - Citrus/Levy	14,389.24
<b>Surface Water Systems</b>	River Corridors	Withlacoochee River - Hamilton/Madison	14,004.24
<b>Surface Water Systems</b>	Springs	ALA112971	1.00

Adopted May 23, 1996, Amended August 28, 1997, February 27, 2003, October 27, 2011 and August 23, 2018



**TABLE 4.1 (Continued)**

**NATURAL RESOURCES OF REGIONAL SIGNIFICANCE**

<b>Map Layer</b>	<b>Classification</b>	<b>Name</b>	<b>Acreage</b>
Surface Water Systems	Springs	ALA930971	1.00
Surface Water Systems	Springs	ALA930972	1.00
Surface Water Systems	Springs	Alapaha Rise	1.00
Surface Water Systems	Springs	Allen Mill Pond	1.00
Surface Water Systems	Springs	Anderson Spring	1.00
Surface Water Systems	Springs	Bathtub	1.00
Surface Water Systems	Springs	Blue Hole	1.00
Surface Water Systems	Springs	Blue Sink	1.00
Surface Water Systems	Springs	Blue Spring Near Mayo	1.00
Surface Water Systems	Springs	Bonnet	1.00
Surface Water Systems	Springs	Branford Spring	1.00
Surface Water Systems	Springs	Cedar Head	1.00
Surface Water Systems	Springs	Charles Spring	1.00
Surface Water Systems	Springs	COL61981	1.00
Surface Water Systems	Springs	COL928972	1.00
Surface Water Systems	Springs	COL930971	1.00
Surface Water Systems	Springs	COL1012971	1.00
Surface Water Systems	Springs	COL101974	1.00
Surface Water Systems	Springs	Columbia Spring	1.00
Surface Water Systems	Springs	Copper Spring	1.00
Surface Water Systems	Springs	Darby	1.00
Surface Water Systems	Springs	Devil's Ear	1.00
Surface Water Systems	Springs	Devil's Eye Spring	1.00
Surface Water Systems	Springs	DIX625993	1.00
Surface Water Systems	Springs	Dogwood	1.00
Surface Water Systems	Springs	Ellaville Spring	1.00
Surface Water Systems	Springs	Falmouth Spring	1.00
Surface Water Systems	Springs	Fanning Springs	1.00
Surface Water Systems	Springs	GIL84971	1.00

Adopted May 23, 1996, Amended August 28, 1997, February 27, 2003, October 27, 2011 and August 23, 2018



**TABLE 4.1 (Continued)**

**NATURAL RESOURCES OF REGIONAL SIGNIFICANCE**

<b>Map Layer</b>	<b>Classification</b>	<b>Name</b>	<b>Acreage</b>
Surface Water Systems	Springs	GIL94972	1.00
Surface Water Systems	Springs	GIL107971	1.00
Surface Water Systems	Springs	GIL107972	1.00
Surface Water Systems	Springs	GIL729971	1.00
Surface Water Systems	Springs	GIL1012971	1.00
Surface Water Systems	Springs	GIL1012973	1.00
Surface Water Systems	Springs	Ginnie Spring	1.00
Surface Water Systems	Springs	Grassy Hole	1.00
Surface Water Systems	Springs	Guaranto Spring	1.00
Surface Water Systems	Springs	HAM610981	1.00
Surface Water Systems	Springs	HAM610982	1.00
Surface Water Systems	Springs	HAM610983	1.00
Surface Water Systems	Springs	HAM610984	1.00
Surface Water Systems	Springs	HAM612981	1.00
Surface Water Systems	Springs	HAM1023971	1.00
Surface Water Systems	Springs	HAM1023974	1.00
Surface Water Systems	Springs	Hart Spring	1.00
Surface Water Systems	Springs	Holton Spring	1.00
Surface Water Systems	Springs	Hornsby Spring	1.00
Surface Water Systems	Springs	ICH001C1	1.00
Surface Water Systems	Springs	ICH001C2	1.00
Surface Water Systems	Springs	ICH001C3	1.00
Surface Water Systems	Springs	ICH001C4	1.00
Surface Water Systems	Springs	ICH001C5	1.00
Surface Water Systems	Springs	ICH001C6	1.00
Surface Water Systems	Springs	ICH001C7	1.00
Surface Water Systems	Springs	ICH001C8	1.00
Surface Water Systems	Springs	Ichetucknee Spring	1.00
Surface Water Systems	Springs	July Spring	1.00

Adopted May 23, 1996, Amended August 28, 1997, February 27, 2003, October 27, 2011 and August 23, 2018



**TABLE 4.1 (Continued)**

**NATURAL RESOURCES OF REGIONAL SIGNIFICANCE**

<b>Map Layer</b>	<b>Classification</b>	<b>Name</b>	<b>Acreage</b>
Surface Water Systems	Springs	LAF718971	1.00
Surface Water Systems	Springs	LAF718972	1.00
Surface Water Systems	Springs	LAF924971	1.00
Surface Water Systems	Springs	LAF929973	1.00
Surface Water Systems	Springs	Lev719991 (Levy)	1.00
Surface Water Systems	Springs	Lilly Spring	1.00
Surface Water Systems	Springs	Lime	1.00
Surface Water Systems	Springs	Lime Run Sink	1.00
Surface Water Systems	Springs	Little Fanning Spring	1.00
Surface Water Systems	Springs	Little River Spring	1.00
Surface Water Systems	Springs	MAD610982	1.00
Surface Water Systems	Springs	MAD612981	1.00
Surface Water Systems	Springs	MAD612982	1.00
Surface Water Systems	Springs	MAD922977	1.00
Surface Water Systems	Springs	Manatee Spring	1.00
Surface Water Systems	Springs	Mearson Spring	1.00
Surface Water Systems	Springs	Mill Pond	1.00
Surface Water Systems	Springs	Mission	1.00
Surface Water Systems	Springs	Morgan's Spring	1.00
Surface Water Systems	Springs	Nutall Rise	1.00
Surface Water Systems	Springs	Orange Grove	1.00
Surface Water Systems	Springs	Otter Spring	1.00
Surface Water Systems	Springs	Owens Spring	1.00
Surface Water Systems	Springs	Peacock Springs	1.00
Surface Water Systems	Springs	Perry	1.00
Surface Water Systems	Springs	Pickard	1.00
Surface Water Systems	Springs	Poe Spring	1.00
Surface Water Systems	Springs	Pot	1.00
Surface Water Systems	Springs	Pothole	1.00

Adopted May 23, 1996, Amended August 28, 1997, February 27, 2003, October 27, 2011 and August 23, 2018



**TABLE 4.1 (Continued)**  
**NATURAL RESOURCES OF REGIONAL SIGNIFICANCE**

Map Layer	Classification	Name	Acreage
Surface Water Systems	Springs	Rock Bluff Spring	1.00
Surface Water Systems	Springs	Rock Sink	1.00
Surface Water Systems	Springs	Rum Island	1.00
Surface Water Systems	Springs	Running Spring	1.00
Surface Water Systems	Springs	Ruth Spring	1.00
Surface Water Systems	Springs	Santa Fe Blue Spring	1.00
Surface Water Systems	Springs	Santa Fe Rise	1.00
Surface Water Systems	Springs	Shingle	1.00
Surface Water Systems	Springs	Steinhatchee Rise	1.00
Surface Water Systems	Springs	Sunbeam	1.00
Surface Water Systems	Springs	SUW107971	1.00
Surface Water Systems	Springs	SUW923973	1.00
Surface Water Systems	Springs	SUW925971	1.00
Surface Water Systems	Springs	SUW1017972	1.00
Surface Water Systems	Springs	Suwanacoochee Spring	1.00
Surface Water Systems	Springs	Suwannee Spring	1.00
Surface Water Systems	Springs	Suwannee Blue Spring	1.00
Surface Water Systems	Springs	TAY625992	1.00
Surface Water Systems	Springs	TAY730991	1.00
Surface Water Systems	Springs	Telford Spring	1.00
Surface Water Systems	Springs	Trail Spring	1.00
Surface Water Systems	Springs	Troy Spring	1.00
Surface Water Systems	Springs	Turtle Spring	1.00
Surface Water Systems	Springs	Twin	1.00
Surface Water Systems	Springs	Wekiva Springs (Levy)	1.00
Surface Water Systems	Springs	White Spring	1.00
Surface Water Systems	Springs	Wilson	1.00
Surface Water Systems	Springs	Withlacoochee Blue Spring	1.00

n/a = Not Applicable. An identification name or number is not provided as the natural resource is either located beyond the jurisdiction of the region, covers the entire region, or is adequately identified on the associated map without the need of a map identification name/number. Source: North Central Florida Regional Planning Council, 2016.

Adopted May 23, 1996, Amended August 28, 1997, February 27, 2003, October 27, 2011 and August 23, 2018



13. A need exists to encourage growth of biomass within the region in light of increasing demand for biomass electrical power generation.
14. As our region contains very sizeable quantities of biomass material for renewable energy production, there is an opportunity to increase the acreage of forested lands, improve the ecological quality of forested lands and provide for renewable energy supplies.
15. There is a need to encourage the sustainability of our forests.

## C. Regional Goals and Policies

### 1. All Natural Resources of Regional Significance

**REGIONAL GOAL 4.1.** Use the natural resources of the region in a sustainable manner.

#### Regional Indicators

1. As of 2015, the number of north central Florida local government comprehensive plans which encourage the use of silvicultural best management practices is unknown.
2. As of 2015, the number of north central Florida local government comprehensive plans Impact which encourage the use of low impact development practices is unknown.
3. As of 2015, the number of north central Florida local government comprehensive plans which encourage the use of energy conservation design principles is unknown.
4. As of 2015, the number of north central Florida local government comprehensive plans which encourage the use of water conservation and reuse strategies is unknown.
5. As of 2015, with the exception of intracounty groundwater transfer by Gainesville Regional Utilities, no interbasin transfer of water occurs in the region.
6. As of 2015, north central Florida has 102.5 megawatts of electrical generation capacity using biomass as the primary fuel source.

**Policy 4.1.1.** Ensure that local government comprehensive plans include provisions which encourage the use of silvicultural best management practices for silviculture uses within Natural Resources of Regional Significance.

**Policy 4.1.2.** Ensure that local government comprehensive plans include provisions which encourage the use of low impact development practices within Natural Resources of Regional Significance.

**Policy 4.1.3.** Ensure that local government comprehensive plans include provisions which encourage the use of energy conservation design principles in order to minimize demand on regional electric power generation facilities.



**Policy 4.1.4.** Ensure that local government comprehensive plans include provisions which encourage the inclusion of water conservation and reuse strategies in order to minimize demand for surface water and groundwater Natural Resources of Regional Significance.

**Policy 4.1.5.** Discourage the transfer of water across water management district boundaries until the receiving jurisdiction has implemented all practicable water supply alternatives and conservation measures, unless it is within a county which is located within two water management districts.

**Policy 4.1.6.** Discourage the transfer of groundwater and surface water across water management district boundaries, as provided for in Policy 4.1.5, where the current and projected water needs of the area from where the water is taken cannot be met, unless it is within a county which is located within two water management districts.

**Policy 4.1.7.** Encourage cooperative efforts to develop local and regional water supplies within water management districts, instead of the transport of water across water management district boundaries, and use water from sources nearest the area of use whenever practicable.

**Policy 4.1.8.** Encourage water management districts to take into account and to not violate the minimum flows and levels of waterbodies located within adjacent water management districts when preparing water supply plans and when issuing consumptive use permits.

**Policy 4.1.9.** Ensure that local government comprehensive plans do not include provisions relying upon Regional Plan Policies 4.1.5 and 4.1.6 contained herein as encouragement or justification to require the issuance of a local government permit for the consumptive use of water or the exercise of any other local government regulatory action preempting or having the effect of preempting the exclusive authority of water management districts over the consumptive use of water as authorized by Chapter 373, Florida Statutes.

## **2. Coastal and Marine Resources**

### **a. Big Bend Salt Marsh, Big Bend Seagrass Beds and Florida Middle Ground**

**REGIONAL GOAL 4.2.** Preserve Big Bend coastal and marine resources identified as Natural Resources of Regional Significance for future generations of residents in recognition of their economic and ecological importance to the region.

#### **Regional Indicators**

1. As of May, 2016, the Big Bend Salt Marsh (Dixie, Levy, and Taylor County) coastline comprised 72,641.34 acres.



2. In 2001, that portion of the Big Bend Seagrass Beds extending 6 nautical miles seaward of the Dixie County and Taylor County coastline was comprised of 102,530.5 acres of bays and estuaries, 63,992.3 acres of open water, 7,638.6 acres of tidal flats, 11,515.0 acres of patchy seagrass, 192,556.6 acres of continuous seagrass, and 108,423.7 acres which were unclassified.<sup>60</sup>
3. In 1996, the Florida Middle Ground comprised 132,000 acres.
4. As of May 2016, the Fenholloway River is in violation of U.S. Environmental Protection Agency water quality standards for dissolved oxygen, biochemical oxygen demand, and un-ionized ammonia.
5. As of January 2007, there were 60 National Pollutant Discharge Elimination System permits in the Region.
6. As of January 2015, no offshore oil or natural gas wells are located within 100 miles of the Dixie and Taylor counties coastline.
7. As of January 2015, no offshore oil or natural gas wells are located within the Florida Middle Ground.

**Policy 4.2.1.** Use non-structural water management controls as the preferred water management approach for the coastal areas of the region.

**Policy 4.2.2.** Provide technical assistance to local governments in ensuring the preservation of the region's coastal and marine resources through their local planning processes.

**Policy 4.2.3.** Minimize the need for excavating and/or filling of the region's coastal wetlands and ensure impacts are mitigated where such activity occurs.

**Policy 4.2.4.** Minimize the impacts of development activities which occur within and/or adjacent to the coastal wetlands.

**Policy 4.2.5.** Remove either the Big Bend Seagrass Beds or an area 35 miles seaward of the coastline of Dixie and Taylor Counties, whichever is of the greater seaward extent, from areas available for oil, gas and mineral leasing in the eastern Gulf of Mexico.

**Policy 4.2.6.** Remove the Florida Middle Ground from areas available for oil, gas and mineral leasing in the eastern Gulf of Mexico.

**Policy 4.2.7.** Minimize the need for establishing new channels and maintenance dredging of existing channels within the seagrass beds and mitigate impacts where such activity occurs.

**Policy 4.2.8.** Coordinate land use and water resources planning for coastal and marine resources designated as Natural Resources of Regional Significance among the Council, local governments, and the water management districts through regional review responsibilities, participation in committees and study groups, and ongoing communication.

---

<sup>60</sup>North Central Florida Regional Planning Council, March 2007. Derived from Seagrass Habitat and Monitoring in Florida's Big Bend, Florida Fish and Wildlife Research Institute and Suwannee River Water Management District, 2006.





**Policy 4.2.9.** Assist in environmental education efforts to increase public awareness of the region's coastal and marine resources through the North Central Florida Tourism Task Force.

**Policy 4.2.10.** Use incentives to encourage future development located within the service area of the unincorporated Town of Suwannee's wastewater treatment plant to hook up to the plant.

**Policy 4.2.11.** Monitor the entire Big Bend Seagrass Beds for a distance of six nautical miles seaward of the coastline and the Florida Middle Ground on a regular basis using a consistent methodology which provides meaningful trend analysis of their health and areal extent.

**Policy 4.2.12.** Ensure that local government comprehensive plans and requests for federal and state funds for development activities reviewed by the Council include adequate provisions for the protection of the Big Bend Salt Marsh and the Big Bend Seagrass Beds.

### 3. Groundwater Resources

#### a. Floridan Aquifer, Areas of High Recharge Potential to the Floridan Aquifer, Ichetucknee Trace, Stream-to-Sink Watersheds and Sinks

**REGIONAL GOAL 4.3.** Maintain an adequate supply of high-quality groundwater to meet the needs of north central Florida residents, in recognition of its importance to the continued growth and development of the region.

#### Regional Indicators

1. As of January 2015, the quantity of potable water contained in the Floridan Aquifer underlying the north central Florida region, its average daily recharge and discharge, were unknown.
2. In 2012, an estimated 332.9 million gallons per day of water were withdrawn from north central Florida groundwater sources.
3. As of May 2016, north central Florida contained 18 first-magnitude springs, 120 second-magnitude springs, and 82 third-magnitude springs.
4. As of June 2016, the known Nitrate Nitrogen readings for north central Florida first magnitude springs, and their date of measure, were as follows (see Table 4.5):

**Policy 4.3.1.** Water management districts should monitor at regular intervals the water quality and flows of springs identified as Natural Resources of Regional Significance.

**Policy 4.3.2.** Continue to increase the region's knowledge of the relationship between ground and surface waters, the surface water needs of native species and natural systems, including minimum flows necessary to the survival of native species and natural systems.

**Policy 4.3.3.** Provide technical assistance to local governments in developing strategies in their local planning and land development regulations processes which can be used in addressing known water quantity, quality or recharge problem areas within their jurisdictions.



**Policy 4.3.4.** Coordinate land use and water resources planning for groundwater resources designated as Natural Resources of Regional Significance among the Council, local governments, and the water management districts through regional review responsibilities, participation in committees and study groups, and ongoing communication.

**Policy 4.3.5.** Assist in environmental education efforts to increase public awareness of the region's ground water resources through The Original Florida Tourism Task Force.

**Policy 4.3.6.** Identify and map the capture zones of all public water supply wellfields.

**Policy 4.3.7.** Provide technical assistance to local governments in implementing wellfield protection programs based upon capture zones delineated by either the Florida Department of Environmental Protection or the local water management districts when such information becomes available.

**Policy 4.3.8.** Ensure that local government comprehensive plans and requests for federal and state funds for development activities reviewed by the Council include adequate provisions for the protection of the Floridan aquifer, Areas of High Recharge Potential to the Floridan aquifer, the Ichetucknee Trace, as well as Stream-to-Sink Watersheds and Sinks which have been identified and mapped in the regional plan as Natural Resources of Regional Significance.

**Policy 4.3.9.** Encourage local and regional development of alternative water supplies within south Georgia, the Suwannee River Water Management District and the St. Johns River Water Management District, including desalination, conservation, reuse of nonpotable reclaimed water and stormwater, as well as aquifer storage and recovery.

**REGIONAL GOAL 4.4.** Protect all sources of recharge to the Floridan aquifer from all activities which would impair these functions or cause a degradation in the quality of the water being recharged in recognition of the importance of maintaining adequate supplies of high-quality groundwater for the region.

### Regional Indicators

1. As of May 2016, the Southwest Florida Water Management District, the St. Johns River Water Management District, the Suwannee River Water Management District, Alachua County, and Columbia County had identified and mapped 1,180,502.52 acres of areas of high recharge potential to the Floridan Aquifer within north central Florida.
2. In Fiscal Year 2010-2011, there were 204,586 visitors to Ichetucknee Springs State Park.<sup>61</sup>
3. In 2015, eight sinks were delineated as Natural Resources of Regional Significance in the North Central Florida Strategic Regional Policy Plan.

**Policy 4.4.1.** Coordinate the mapping of high recharge areas in order to assure consistency in identification of such areas near district boundaries.

**Policy 4.4.2.** Update the regional map series delineating Areas of High Recharge Potential to the Floridan Aquifer with a map series depicting High Recharge Areas of the Floridan Aquifer when the latter information becomes available.

---

<sup>61</sup>2013 Florida Statistical Abstract, Table 19.52.



**Policy 4.4.3.** Assist state and local agencies in developing and implementing strategies for the protection of the Ichetucknee Trace so that activities occurring within the Trace do not adversely impact the water quality and flow of surface waters within Ichetucknee Springs State Park.

**Policy 4.4.4.** Provide technical assistance to local governments in the development and implementation of appropriate local government comprehensive plan policies and land development regulations necessary to maintaining the quantity and quality of ground water recharge in Areas of High Recharge Potential to the Floridan Aquifer, Stream-to-Sink Watersheds, and Sinks.

**Policy 4.4.5.** Ensure that local government comprehensive plans and requests for federal and state funds for development activities reviewed by the Council include adequate provisions for stormwater management and aquifer recharge protection in order to protect the quality and quantity of water contained in the Floridan Aquifer.

**Policy 4.4.6.** Work with the water management districts to develop and apply coordinated review procedures and criteria for reviewing groundwater issues related to federally-assisted projects, local plan amendments and revisions, local comprehensive plan evaluation and appraisal reports, and local comprehensive plan intergovernmental coordination elements.

**Policy 4.4.7.** Minimize the effect of mining activities on water quality and quantity of the Floridan Aquifer.

## 4. Natural Systems

### a. Regional Ecological Greenways Network

**REGIONAL GOAL 4.5.** Protect all listed species within the Regional Ecological Greenways Network.<sup>62</sup>

#### Regional Indicators

1. As of May 2016 the Regional Ecological Greenways Network comprised 1,861,136 acres in north Central Florida.

**Policy 4.5.1.** Allow development and economic activity within and near the Regional Ecological Greenway to the extent that such development and economic activity does not significantly and adversely affect the functions of the resource as an ecological greenway.

**Policy 4.5.2.** Work with local governments and the Florida Fish and Wildlife Conservation Commission to ensure the survival of all listed species and their habitats found in the Regional Ecological Greenways Network.<sup>63</sup>

---

<sup>62</sup>Listed species means an animal species designated as Endangered, Threatened, or Species of Special Concern in Chapter 68A-27.003-68A-27.005, Florida Administrative Code; a plant species designated as Endangered, Threatened, or Commercially Exploited as designated in Chapter 5B-40, Florida Administrative Code, or an animal or plant species designated as Endangered or Threatened in Title 50, Code of Federal Regulations, Part 17.

<sup>63</sup>Ibid.



**Policy 4.5.3.** Increase citizen awareness on the effects of human activities on listed species and their habitats in the Regional Ecological Greenways Network.<sup>64</sup>

**Policy 4.5.4.** Coordinate planning efforts to protect listed species and their habitats found within the Regional Ecological Greenways Network.<sup>65</sup>

**Policy 4.5.5** Endangered and threatened species and their habitats within the Regional Ecological Greenways Network shall be protected.<sup>66</sup>

**Policy 4.5.6.** When a land use designation change is proposed or an increase in allowable land use density or intensity is proposed, listed species and their habitat known to exist within the Regional Ecological Greenways Network shall be protected. Protection should include, but not necessarily be limited to, the following:

- a) conservation easements;
- b) on and offsite mitigation/conservation banks;
- c) tax breaks;
- d) transferable densities;
- e) management agreements; and,
- f) agriculture and silviculture best management practices.<sup>67</sup>

**Policy 4.5.7.** Working with private property owners, encourage voluntary protection of listed species and their habitat located on private property within the Regional Ecological Greenways Network through the use of best management practices and public education programs.<sup>68</sup>

**Policy 4.5.8** Provide technical assistance to local governments in the development of appropriate local government comprehensive plan policies and land development regulations necessary to maintain the identified attributes of listed species and their habitat within the Regional Ecological Greenways Network.<sup>69</sup>

**Policy 4.5.9.** Support agricultural and silvicultural practices that maintain the function and value of natural systems through the use of best management practices.

---

<sup>64</sup>Loc. cit.

<sup>65</sup>Loc. cit.

<sup>66</sup>Listed species means an animal species designated as Endangered, Threatened, or Species of Special Concern in Chapter 68A-27.003-68A-27.005, Florida Administrative Code; a plant species designated as Endangered, Threatened, or Commercially Exploited as designated in Chapter 5B-40, Florida Administrative Code, or an animal or plant species designated as Endangered or Threatened in Title 50, Code of Federal Regulations, Part 17.

<sup>67</sup>Ibid.

<sup>68</sup>Loc. cit.

<sup>69</sup>Loc. cit.



**Policy 4.5.10.** Ensure that requests for federal and state funds, federal and state permits, and direct federal and state actions for development activities reviewed by the Council include adequate provisions for the protection of listed species and their habitat within the Regional Ecological Greenways Network.<sup>70</sup>

**Policy 4.5.11.** Ensure that local government comprehensive plans include policies which, for developments within the Regional Ecological Greenways Network require an evaluation to determine the presence of listed species and their habitat and, if such species are found, require the development of a management plan, including modifications to the proposed development as necessary, to ensure the protection of listed species and their habitat.<sup>71</sup>

**Policy 4.5.12.** Ensure that local government comprehensive plans include policies which protect native vegetation and provides for the use of native vegetation, thereby promoting the regeneration of natural habitats within the Regional Ecological Greenways Network.

## 5. Planning and Resource Management Areas

### a. Private Conservation Lands and Public Conservation Lands

**REGIONAL GOAL 4.6.** Protect Natural Resources of Regional Significance identified in this plan as “Planning and Resource Management Areas.”

#### Regional Indicators

1. As of May 2016, north central Florida contained 5,861.31 acres of private conservation lands.
2. As of May 2016, north central Florida contained approximately 170,132.95 acres of federally-owned conservation lands.
3. As of May 2016, north central Florida contained 277,268.15 acres of state-owned conservation and recreation lands.
4. As of May 2016, north central Florida contained approximately 308,011.64 acres of water management District-owned conservation lands (including less than fee simple ownership).

**Policy 4.6.1.** Provide technical assistance to local governments in the development of appropriate local government comprehensive plan policies and land development regulations necessary to maintaining areas and water bodies identified as Natural Resources of Regional Significance classified in this plan as “Planning and Resource Management Areas”.

---

<sup>70</sup>Listed species means an animal species designated as Endangered, Threatened, or Species of Special Concern in Chapter 68A-27.003-68A-27.005, Florida Administrative Code; a plant species designated as Endangered, Threatened, or Commercially Exploited as designated in Chapter 5B-40, Florida Administrative Code, or an animal or plant species designated as Endangered or Threatened in Title 50, Code of Federal Regulations, Part 17.

<sup>71</sup>Ibid.



**Policy 4.6.2.** Seek the input of local governments and the regional planning council in the preparation of management plans for public conservation lands and private conservation lands identified as Natural Resources of Regional Significance.

**Policy 4.6.3.** Continue to provide input to state and local agencies in reviewing existing or proposed designations of areas or water bodies as one of the categories identified as Natural Resources of Regional significance classified in this plan as "Planning and Resource Management Areas".

**Policy 4.6.4.** Ensure that local government comprehensive plans and requests for federal and state funds for development activities reviewed by the Council include adequate provisions for the protection of Planning and Resource Management Areas identified and mapped in the regional plan as Natural Resources of Regional Significance.

## 6. Surface Water Systems

### a. Fresh Water Wetlands, Lakes, River Corridors and Springs

**REGIONAL GOAL 4.7.** Maintain the quantity and quality of the region's surface water systems in recognition of their importance to the continued growth and development of the region.

#### Regional Indicators

1. As of May 2016, the water management districts had identified 1,363,761.27 acres of fresh water wetlands within the region.
2. As of May 2016, 13 north central Florida lakes were identified as Natural Resources of Regional Significance in the North Central Florida Strategic Regional Policy Plan.
3. As of May 2016, 14 river corridors were designated as Natural Resources of Regional Significance in the North Central Florida Strategic Regional Policy Plan.
4. As of May 2016, 139,918.29 acres of river corridor were designated as Natural Resources of Regional Significance in the North Central Florida Strategic Regional Policy Plan.
5. As of May 2016, 138 North central Florida springs were listed as Natural Resources of Regional Significance in the North Central Florida Strategic Regional Policy Plan.
6. In 2016, 17 north central Florida Natural Resources of Regional Significance were under a consumption advisory for Large-mouth bass.
7. In 2016, 13 north central Florida Natural Resources of Regional Significance were under a consumption advisory for Redbreast Sunfish and Redear Sunfish.
8. In 2016, seven north central Florida Natural Resources of Regional Significance were under a consumption advisory for Brown Bullhead.
9. In 2016, eight north central Florida Natural Resources of Regional Significance were under a consumption advisory for Black Crappie.

Adopted May 23, 1996, Amended August 28, 1997, February 27, 2003, October 27, 2011 and August 23, 2018



10. In 2016, fourteen north central Florida Natural Resources of Regional Significance were under a consumption advisory for Bluegill.
11. In 2016, 6 north central Florida Natural Resources of Regional Significance were under a consumption advisory for Channel Catfish.
12. In 2016, 7 north central Florida Natural Resources of Regional Significance were under a consumption advisory for White Catfish.
13. In 2016, 15 north central Florida Natural Resources of Regional Significance were under a consumption advisory for Spotted Sunfish.
14. In 2016, one north central Florida Natural Resource of Regional Significance was under a consumption advisory for Chain Pickerel.
15. In 2016, one north central Florida Natural Resource of Regional Significance was under a consumption advisory for Striped Bass.
16. In 2016, five north central Florida Natural Resources of Regional Significance were under a consumption advisory for Warmouth.
17. In 2016, four north central Florida Natural Resources of Regional Significance were under a consumption advisory for Spotted Bullhead Catfish.
18. As of June 2007, minimum flows and levels have been established for the lower Suwannee River, Madison County Blue Spring, and Fanning Spring.

**Policy 4.7.1.** Provide technical assistance to local governments in the development and implementation of appropriate local government comprehensive plan policies and land development regulations necessary to maintaining the quantity and high quality of the region's surface water systems.

**Policy 4.7.2.** Continue the mapping of river floodplains.

**Policy 4.7.3.** Update the regional map series delineating river floodplains as this information becomes available.

**Policy 4.7.4.** Work with north central Florida local governments to standardize on a common source for wetland maps contained in local government comprehensive plans.

**Policy 4.7.5.** Use non-structural water management controls as the preferred water management approach for rivers, lakes, springs, and fresh water wetlands identified as Natural Resources of Regional Significance.

**Policy 4.7.6.** Support the coordination of land use and water resources planning for surface water resources designated as Natural Resources of Regional Significance among the Council, local governments, and the water management districts through regional review responsibilities, participation in committees and study groups, and ongoing communication.

**Policy 4.7.7.** Assist in environmental education efforts to increase public awareness of the region's surface water systems through the North Central Florida Tourism Task Force.

Adopted May 23, 1996, Amended August 28, 1997, February 27, 2003, October 27, 2011 and August 23, 2018





**Policy 4.7.8.** Establish and enforce consistent boating safety zones along the Suwannee and Santa Fe rivers.

**Policy 4.7.9.** Assist local governments in establishing consistent regulations for development projects within river corridors identified as Natural Resources of Regional Significance.

**Policy 4.7.10.** Identify and map the capture zones of all springs identified as Natural Resources of Regional Significance. Once delineated, provide technical assistance to local governments in implementing spring protection programs based upon capture zones.

**Policy 4.7.11.** Provide technical assistance to local governments in obtaining grants to establish centralized sewer systems in identified septic tank problem areas.

**Policy 4.7.12.** Ensure that local government comprehensive plans and requests for federal and state funds for development activities reviewed by the Council include adequate provisions for stormwater management, including retrofit programs for known surface water runoff problem areas, and aquifer recharge protection in order to protect the quality and quantity of water contained in the Floridan Aquifer and surface water systems identified as Natural Resources of Regional Significance.

**Policy 4.7.13.** Work with local governments, state and federal agencies, and the local water management districts in the review of local government comprehensive plans as they affect wetlands identified as Natural Resources of Regional Significance to ensure that any potential adverse impacts created by the proposed activities on wetlands are minimized to the greatest extent possible.

**Policy 4.7.14.** Minimize the effect of mining on the surface water quality and seasonal flows of surface waters identified as Natural Resources of Regional Significance.

**Policy 4.7.15.** Encourage water management districts to monitor at regular intervals the quality and quantity of surface waters identified as Natural Resources of Regional Significance.

**Policy 4.7.16.** Assist water quality working groups formed to meet the water quality standards of waterbodies included in the State of Florida 303(d) list.



# Chapter V

## Regional Transportation



THIS PAGE LEFT BLANK INTENTIONALLY

### 3. Regionally Significant Transportation Facilities

Regionally significant transportation facilities are those facilities used to provide transportation between cities located both within and outside the region and other specially designated facilities. They include one airport, two interstate highways, 10 U.S. highways, 28 state roads, and six public transit service providers.<sup>5</sup>

**TABLE 5.7**

**REGIONALLY SIGNIFICANT TRANSPORTATION FACILITIES**

Type	Name	Description	Length (miles)
<b>Airport</b>	Gainesville Regional Airport	Gainesville	n/a
<b>Public Transit Service Provider</b>	MV Transportation, Inc.	Designated coordinated community transportation provider for Alachua County	n/a
<b>Public Transit Service Provider</b>	Big Bend Transit, Inc.	Designated coordinated community transportation provider for Madison and Taylor Counties	n/a
<b>Public Transit Service Provider</b>	Gainesville Regional Transit System	Fixed-route public transit service provider for Gainesville and nearby urbanized, unincorporated Alachua County	n/a
<b>Public Transit Service Provider</b>	Levy County Transit	Designated coordinated community transportation provider for Levy County	n/a
<b>Public Transit Service Provider</b>	Suwannee Valley Transit Authority	Designated coordinated community transportation provider for Columbia, Hamilton and Suwannee Counties	n/a
<b>Public Transit Service Provider</b>	Suwannee River Economic Council, Inc.	Designated coordinated community transportation provider for Bradford, Dixie, Gilchrist, Lafayette and Union Counties	n/a
<b>Regional Road Network - Interstate Highways</b>	I-75	From Hamilton County line at the Georgia border to the Alachua County/ Marion County line (Strategic Intermodal System)	96
<b>Regional Road Network - Interstate Highways</b>	I-10	From the Madison County/Jefferson County line to the Columbia County/Baker County line (Strategic Intermodal System)	80.5
<b>Regional Road Network - State Road</b>	SR 2	From Columbia County. - Georgia border to Columbia County - Baker County line	1.0

<sup>5</sup> North central Florida regionally significant facilities and resources, as defined in Rule 27E.005, Florida Administrative Code, consist of Regionally Significant Emergency Preparedness Facilities identified in Table 3.2, Natural Resources of Regional Significance identified in Table 4.1, Regionally Significant Transportation Facilities identified in Table 5.7, and Regionally Significant Facilities and Resources, identified in Section VI.



**TABLE 5.7(Continued)**

**REGIONALLY SIGNIFICANT TRANSPORTATION FACILITIES**

Type	Name	Description	Length (miles)
Regional Road Network - State Road	SR 6	From I-10 to U.S. 41	1.5
Regional Road Network - State Road	SR 10A	From US 90 to US 90	4.0
Regional Road Network - State Road	SR 14	From I-10 to SR 53	5.5
Regional Road Network - State Road	SR 18	From SR 121 to SR 231	4.5
Regional Road Network - State Road	SR 20	From SR 26 to Alachua County - Putnam County line (Strategic Intermodal System)	18.0
Regional Road Network - State Road	SR 21	From Putnam County Line to Clay County line	3.6
Regional Road Network - State Road	SR 24	U.S. 301 to Cedar Key	72.2
Regional Road Network - State Road	SR 26	From US 19/98 to Alachua County - Putnam County line (Strategic Intermodal System)	56.5
Regional Road Network - State Road	SR 26A	From SR 26 to SR 26	2.0
Regional Road Network - State Road	SR 47	From US 441 to US 129	41.0
Regional Road Network - State Road	SR 51	From US 129 to terminus in unincorporated community of Steinhatchee	53.0
Regional Road Network - State Road	SR 53	From Madison County - Georgia border to I-10	19.0
Regional Road Network - State Road	SR 100	From US 90 to Bradford County - Clay County line (Strategic Intermodal System)	46.1
Regional Road Network - State Road	SR 120	From US 441 to SR 23	2.5
Regional Road Network - State Road	SR 121	From Union Co. - Baker Co. line to US 19/98	85.5
Regional Road Network - State Road	SR 145	From Madison Co. - Georgia border to SR 53	16.0

Adopted May 23, 1996, Amended August 28, 1997, February 27, 2003, October 27, 2011 and August 23, 2018



**TABLE 5.7(Continued)**

**REGIONALLY SIGNIFICANT TRANSPORTATION FACILITIES**

Type	Name	Description	Length (miles)
<b>Regional Road Network - State Road</b>	SR 222	From I-75 to entrance to SR 26 (Strategic Intermodal System)	14.3
<b>Regional Road Network - State Road</b>	SR 226	From SR 24 to SR 331	2.3
<b>Regional Road Network - State Road</b>	SR 231	From Florida Department of Corrections Lake Butler Receiving and Medical Center to SR 121	3.0
<b>Regional Road Network - State Road</b>	SR 235	From US 441 to SR 121	21.2
<b>Regional Road Network - State Road</b>	SR 238	From US 441 to SR 100	15.0
<b>Regional Road Network - State Road</b>	SR 247	From US 129 to US 90	15.5
<b>Regional Road Network - State Road</b>	SR 320	From Manatee Springs State Park to US 19/Alt 27/98	5.8
<b>Regional Road Network - State Road</b>	SR 329	From SR 20 to SR 331	4.0
<b>Regional Road Network - State Road</b>	SR 331	From I-75 to SR 20 (Strategic Intermodal System)	6.0
<b>Regional Road Network - State Road</b>	SR 345	From NW 70th Avenue to US Alt 27	7.6
<b>Regional Road Network - State Road</b>	SR 349	From US 27 to US 19/98	24.5
<b>Regional Road Network - U.S. Highway</b>	US 19	From Madison County - Jefferson County line to Levy County - Citrus County line (Strategic Intermodal System)	125.2
<b>Regional Road Network - U.S. Highway</b>	US 27	From Madison County. - Jefferson County. line to Levy County - Marion County. line	128.3
<b>Regional Road Network U.S. Highway</b>	Alt US 27	From Gilchrist County - Levy County line to U.S. 27 (Strategic Intermodal System)	35.0
<b>Regional Road Network - U.S. Highway</b>	US 41	From Hamilton County - Georgia border to I-10	37.0
<b>Regional Road Network - U.S. Highways</b>	US 41	From I-10 to U.S. 90 (Strategic Intermodal System)	4.5
<b>Regional Road Network - U.S. Highways</b>	US 41	From U.S. 90 to Levy County - Marion County line	74.4

Adopted May 23, 1996, Amended August 28, 1997, February 27, 2003, October 27, 2011 and August 23, 2018



**TABLE 5.7(Continued)**

**REGIONALLY SIGNIFICANT TRANSPORTATION FACILITIES**

Type	Name	Description	Length (miles)
<b>Regional Road Network - U.S. Highway</b>	US 90	From Jefferson County - Madison County line to U.S. 41	80.0
<b>Regional Road Network - U.S. Highway</b>	US 90	From U.S. 41 to SR 100 (Strategic Intermodal System)	2.1
<b>Regional Road Network - U.S. Highway</b>	US 90	From SR 100 to Columbia County - Baker County line	8.9
<b>Regional Road Network - U.S. Highway</b>	US 98	From Taylor County - Jefferson County line to Levy County - Citrus County Line	127.8
<b>Regional Road Network - U.S. Highway</b>	US 129	From Hamilton County - Georgia border to U.S. 19/Alt 27/98	87.9
<b>Regional Road Network - U.S. Highway</b>	US 221	From Madison County - Jefferson County line to Perry	32.7
<b>Regional Road Network - U.S. Highway</b>	US 301	From Bradford County - Clay County line to Alachua County - Marion County. line (Strategic Intermodal System)	50.5
<b>Regional Road Network - U.S. Highway</b>	US 441	From Columbia County - Georgia border to Alachua County - Marion County line	69.5
<b>Regional Rail Line</b>	CSX Transportation	From Jefferson County - Madison County line to the Columbia County - Baker County line	85.1
<b>Regional Rail Line</b>	CSX Transportation	From Bradford County - Alachua County line to the Alachua County - Marion County line	33.4
<b>Regional Rail Line</b>	CSX Transportation	From Bradford County - Alachua County line to the City of Newberry	24.2
<b>Regional Rail Line</b>	CSX Transportation	From the City of Hawthorne to the Alachua County - Putnam County line	2.1
<b>Regional Rail Line</b>	CSX Transportation	From Alachua County - Bradford County line to the Bradford County - Clay County line	19.5
<b>Regional Rail Line</b>	CSX Transportation	From Alachua County - Bradford County line to the Bradford County - Clay County line	20.4
<b>Regional Rail Line</b>	CSX Transportation	From the City of Gainesville to the Bradford County - Alachua County line in the City of Newberry	12.4
<b>Regional Rail Line</b>	Florida Northern Railroad	From western Alachua County terminus to the Levy County-Marion County line	35.5

Adopted May 23, 1996, Amended August 28, 1997, February 27, 2003, October 27, 2011 and August 23, 2018



**TABLE 5.7(Continued)**

**REGIONALLY SIGNIFICANT TRANSPORTATION FACILITIES**

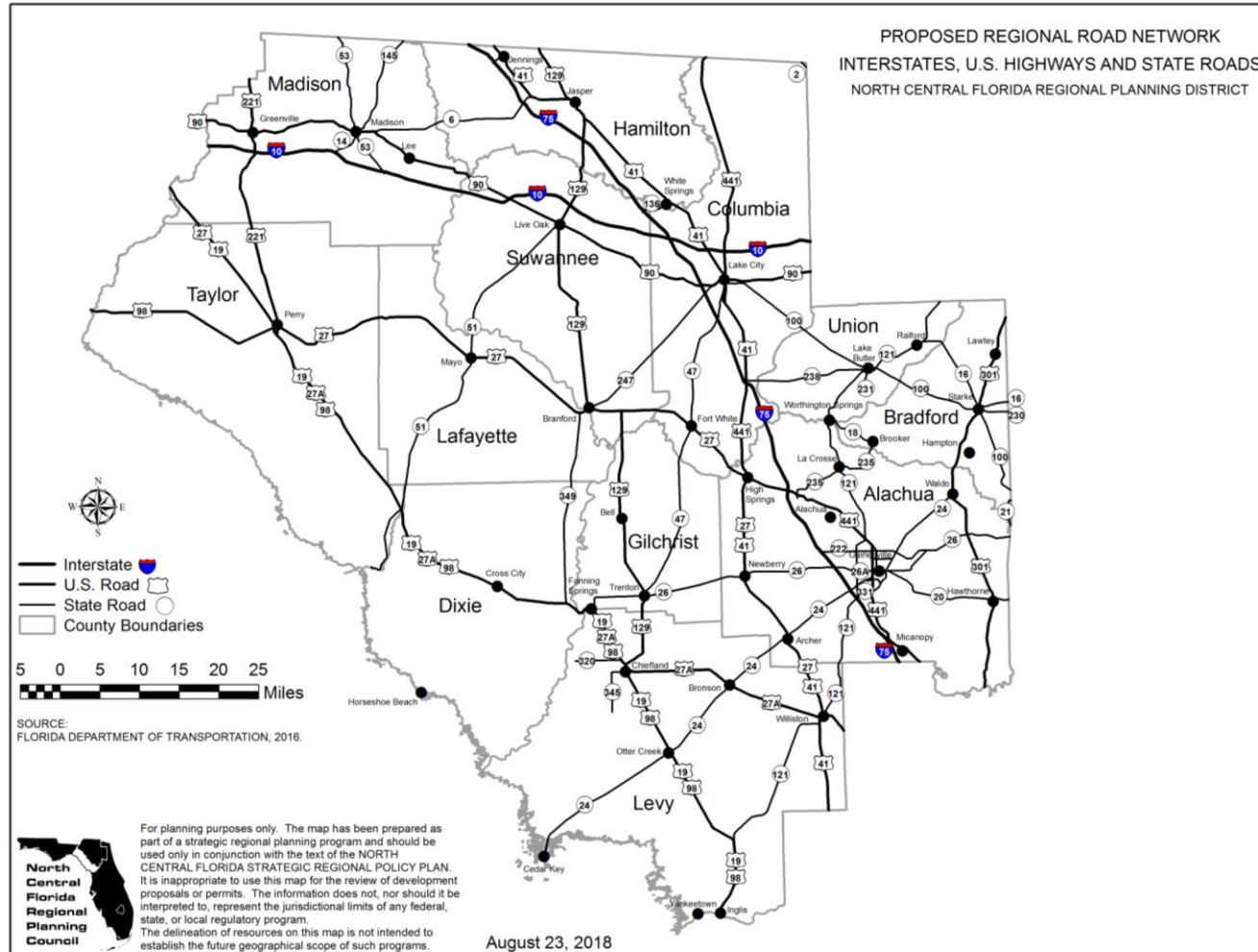
Type	Name	Description	Length (miles)
<b>Regional Rail Line</b>	Georgia and Florida Railnet	From Georgia State line - Madison County line to the City of Perry	48.2
<b>Regional Rail Line</b>	Norfolk Southern	From Georgia State line - Columbia County line to the City of Lake City	47.8

n/a = Not Applicable

Source: North Central Florida Regional Planning Council, July 2016.

## ILLUSTRATION 5.1

### NORTH CENTRAL FLORIDA REGIONAL ROAD NETWORK



Adopted May 23, 1996, Amended August 28, 1997, February 27, 2003, October 27, 2011 and August 23, 2018



## C. Regional Goals and Policies

### 1. Regional Road Network

**REGIONAL GOAL 5.1.** Mitigate the impacts of development to the Regional Road Network as well as adverse extrajurisdictional impacts while encouraging development within urban areas.

#### Regional Indicators

1. In 2016, the Regional Road Network consisted of 216.8 miles of Interstate highways, 993.4 miles of U.S. Highways and 678.9 miles of State roads.

#### a. Local Government Comprehensive Plans

Table 5.8 below summarizes Regional Policies 5.1.1 through 5.1.4.

**TABLE 5.8**

**SUMMARY OF REGIONAL PLAN POLICIES 5.1.1 THROUGH 5.1.4  
LOCAL GOVERNMENT COMPREHENSIVE PLANS**

Area	Local Government Comprehensive Plans Containing Transportation Planning Best Practices	Regional Plan Determination of Impacts
Municipalities, Urban Service Areas, Urban Development Areas	Yes	Adequately Mitigated
Municipalities, Urban Service Areas, Urban Development Areas	No	Florida Department of Transportation Level of Service E
Rural Areas	Yes	Florida Department of Transportation Level of Service E
Rural Areas	No	Florida Department of Transportation Level of Service D

Source: North Central Florida Regional Planning Council, 2011.

**Policy 5.1.1.** Within municipalities, urban service areas, or urban development areas where local government comprehensive plans include goals and policies which implement Transportation Planning Best Practices, adverse impacts to the Regional Road Network are adequately. Such local government comprehensive plans and plan amendments within municipalities, urban service areas, or urban development areas shall not be subject to a regional planning council determination of Regional Road Network or extrajurisdictional impacts.

**Policy 5.1.2.** Within municipalities, urban service areas, and urban development areas where local government comprehensive plans do not include goals and policies implementing Transportation Planning Best Practices, local government comprehensive plans and plan amendments shall be subject to a regional planning council determination of Regional Road Network and extrajurisdictional impacts based on the minimum level of service standard of E as determined by the Florida Department of Transportation Quality/Level of Service Handbook.

Adopted May 23, 1996, Amended August 28, 1997, February 27, 2003, October 27, 2011 and August 23, 2018



**Policy 5.1.3.** Outside municipalities, urban service areas, and urban development areas where local government comprehensive plans include goals and policies implementing Transportation Planning Best Practices, local government comprehensive plans and plan amendments shall be subject to a regional planning council determination of Regional Road Network and extrajurisdictional impacts based on the minimum level of service standard of E as determined by the Florida Department of Transportation Quality/Level of Service Handbook.

**Policy 5.1.4.** Outside municipalities, urban service areas, and urban development areas where local government comprehensive plans do not include goals and policies implementing Transportation Planning Best Practices, local government comprehensive plans and plan amendments shall be subject to a regional planning council determination of Regional Road Network and extrajurisdictional impacts based on the minimum level of service standard of D as determined by the Florida Department of Transportation Quality/Level of Service Handbook.

## 2. Coordination and Assistance

**REGIONAL GOAL 5.2.** Coordinate with and assist state agencies, transportation planning organizations and local governments to implement an energy-efficient, interagency coordinated transportation system.

### Regional Indicator:

As of January 2016, the Council provides staff services to the Metropolitan Transportation Planning Organization for the Gainesville Urbanized Area.

**Policy 5.2.1.** Provide technical assistance to local governments in preparing and updating Traffic Circulation Elements in local government comprehensive plans to implement an energy-efficient, interagency coordinated transportation system.

**Policy 5.2.2.** Coordinate with the Florida Department of Transportation regarding proposed modifications to the Regional Road Network to assure consistency with local government comprehensive plans which implement an energy-efficient, interagency coordinated transportation system.

**Policy 5.2.3.** Review proposals for road widening and new transportation corridors for impacts upon natural resources of regional significance and adjacent local governments.

**Policy 5.2.4.** Provide technical assistance to local governments seeking funds for transportation modifications which implement an energy-efficient, interagency coordinated transportation system.

### a. University of Florida

**REGIONAL GOAL 5.3.** Mitigate adverse impacts to regional transportation facilities associated with enrollment growth at the University of Florida.

### Regional Indicators

1. During the fall 2016 semester, the University of Florida had no off-campus park-and-ride lots.

**Policy 5.3.1.** Construct off-campus parking lots and garages which serve the University of Florida and operate a series of University-sponsored shuttle buses between the parking lots and the campus instead of constructing additional parking spaces on the campus.

Adopted May 23, 1996, Amended August 28, 1997, February 27, 2003, October 27, 2011 and August 23, 2018



**Policy 5.3.2.** Maintain the percentage of students living on-campus at 22.0 percent.

**Policy 5.3.3.** Provide an evening division of classes in order to reduce off-campus impacts on the regional road network during peak hour traffic periods.

**Policy 5.3.4.** Adopt transportation demand management strategies such as carpools, vanpools, public transit, bicycling, incorporating public transit costs in University of Florida student activity fees, and walking to encourage use of the multi-modal corridors for modes of travel other than single-occupant automobiles.

**Policy 5.3.5.** Adopt measures such as prohibiting freshmen from purchasing parking decals to park on campus in order to reduce the demand for parking facilities and encouraging freshmen to use public transit, bicycles, and walking while traveling to and from the University area.

## b. Gainesville Regional Airport

**REGIONAL GOAL 5.4.** Maximize the use of the Gainesville Regional Airport before developing a new regional airport.

### Regional Indicator

1. For the 12 months ending in September 2014, Gainesville Regional Airport had a total of 33,814 enplanements and deplanements.<sup>8</sup>

**Policy 5.4.1.** Coordinate development plans of the Gainesville Regional Airport with the City of Gainesville and Alachua County comprehensive plans to avoid unnecessary conflicts, to ensure the safety of airport operations, and to allow for future increases in the operational capacity of the airport.

## c. Rail Lines

**REGIONAL GOAL 5.5.** Include rail lines and railroads as part of an integrated regional transportation system consisting of the Regional Road Network, regional airports and transit service providers.

### Regional Indicator

As of 2016, north central Florida has 394.7 miles of rail lines.

**Policy 5.5.1.** Coordinate rail line expansion plans with the Florida Department of Transportation and with local governments to ensure consistency with local government comprehensive plans, to ensure public safety, and to allow for future increases in the operational capacity of rail lines.

**Policy 5.5.2.** Review proposals for new rail lines for impact upon natural resources of regional significance and adjacent local governments.

---

<sup>8</sup> Air Traffic Volume and Fuel Flowage for the 12 Months Ending September 30, 2014, Gainesville Regional Airport. Adopted May 23, 1996, Amended August 28, 1997, February 27, 2003, October 27, 2011 and August 23, 2018



## d. Paratransit Services and the Transportation Disadvantaged

**REGIONAL GOAL 5.6.** Reduce the unmet General Trip demand of the north central Florida Transportation Disadvantaged population.

### Regional Indicators

1. In fiscal year 2014-15, 414,276 paratransit trips occurred in the region by north central Florida paratransit service providers.
2. In Fiscal Year 2014-15, north central Florida paratransit service providers reported annual operating revenues of \$14,084,883.

**Policy 5.6.1.** Improve mobility options for low-income, elderly and disabled citizens.

**Policy 5.6.2.** Increase funding for coordinated transportation systems for the transportation disabled.

**Policy 5.6.3.** The Council and/or the Metropolitan Transportation Organization for the Gainesville Urbanized Area should provide technical assistance to designated north central Florida local transportation coordinating boards and community transportation coordinators.

## e. Public Transit and Livable Community Reinvestment Plan

**REGIONAL GOAL 5.7.** Increase the percentage of north central Florida residents using public transportation as a primary means of transportation.

### Regional Indicators

1. For the 12 months ending in September 2015, Gainesville Regional Transit System fixed route ridership was 10,293,434.<sup>9</sup>

**Policy 5.7.1.** Coordinate with the Gainesville Regional Transit System, the Metropolitan Transportation Planning Agency for the Gainesville Urbanized area, the University of Florida, the City of Gainesville, and Alachua County to provide opportunities through their respective plans and programs for a greater likelihood of increased public transit ridership.

**Policy 5.7.2.** Coordinate with Community Transportation Coordinators and north central Florida local governments to provide opportunities through their respective plans and programs for a greater likelihood of increased public transit ridership.

**Policy 5.7.3.** Assist the Metropolitan Transportation Planning Organization for the Gainesville Urbanized Area in implementing the vision statement contained in its Gainesville Metropolitan Area Year 2035 Transportation Plan entitled, The Livable Community Reinvestment Plan.

<sup>9</sup>Fiscal Year 2015 Gainesville Regional Transit System Ridership Report.  
Adopted May 23, 1996, Amended August 28, 1997, February 27, 2003, October 27, 2011 and August 23, 2018



# Chapter VI

## Regionally Significant Facilities and Resources

Adopted May 23, 1996, Amended August 28, 1997, February 27, 2003, October 27, 2011 and August 23, 2018



THIS PAGE LEFT BLANK INTENTIONALLY



## Chapter VI: Regionally Significant Facilities and Resources

Regionally Significant Facilities and Resources are those facilities and resources identified by the Council as being of regional importance and meets one or more of the following criteria: (1) its uniqueness, function, benefit, service delivery area, or importance is identified as being of regional concern; (2) a facility or resource that requires the participation or involvement of two or more governmental entities to ensure proper and efficient management; or (3) a facility or resource that meets either criteria in 1 or 2 above and is defined to be of state or regional concern or importance in state or federal laws or rules of state or regional agencies adopted pursuant to Chapter 120, Florida Statutes.<sup>1</sup>

Facilities recognized by the North Central Florida Strategic Regional Policy Plan as regionally significant facilities and resources not addressed elsewhere are comprised of cultural facilities, educational institutions, electric power generation stations, hospitals, landfills, military facilities, and state prisons.

Cultural Facilities recognized as regional facilities are those which are either owned or funded (at least in part) by the state or provide cultural opportunities to residents of multiple local jurisdictions.

Educational institutions recognized as regional facilities are those which provide either two or four year college degrees or technical training to residents of multiple local jurisdictions.

Electrical power facilities recognized as regional facilities are those facilities which provide electrical power to multiple local government jurisdictions.

Florida Greenways recognized as regional facilities are those greenways which have been formally recognized as such by the Florida Greenways Commission.

Hospitals recognized as regional facilities are those facilities which provide medical services to residents of multiple local government jurisdictions.

Landfills recognized as regional facilities are those facilities which provide solid waste disposal services to multiple local government jurisdictions.

State prisons are recognized as regional facilities as they hold prisoners whose place of residence is from outside the region. They also represent a significant source of employment for north central Florida residents. Since the majority of prisoners housed in north central Florida prisons are from outside the region, state prisons are considered to be a basic industry for north central Florida.

---

<sup>1</sup>North central Florida regionally significant facilities and resources, as defined in Rule 27E.005, Florida Administrative Code, consist of Regionally Significant Emergency Preparedness Facilities identified in Table 3.2, Natural Resources of Regional Significance identified in Table 4.1, Regionally Significant Transportation Facilities identified in Table 5.9, and Regionally Significant Facilities and Resources, identified in Section VI.



## **A. Cultural Facilities**

Cedar Key Museum State Park  
Center for Performing Arts  
Florida State Museum  
Florida Trail  
Forest Capital Museum  
Hippodrome State Theater  
Marjorie Kinnan Rawlings State Historical Site  
Samuel P. Harn Art Museum  
Stephen Foster State Folk Culture Center

## **B. Educational Institutions**

Big Bend Technical College  
Bradford-Union County Vocational Technical Center  
Central Florida College  
Florida Gateway College  
North Florida Community College  
Santa Fe College  
Suwannee-Hamilton Vocational Technical Center  
University of Florida

## **C. Electric Power Facilities**

Electric Power Generating Stations  
Electric Transmission Lines of 500 KVA  
Electric Transmission Lines of Lesser Voltage That Serve Multi-County Jurisdictions  
Electric Substations to Support Above-Referenced Transmission Line Facilities

## **D. Florida Greenways**

Alapaha River Trail (Hamilton County)  
Alapahoochee River Paddling Trail (Hamilton County)  
Archer Braid Corridor (Alachua County)  
Archer Road Corridor (Alachua County)  
Aucilla River (Madison and Taylor Counties)  
Big Bend Saltwater Paddling Trail (Dixie, Levy and Taylor Counties)  
Crooked Creek Paddling Trail (Taylor County)  
Cross Florida Greenway Corridor (Levy County)  
Dudley Farm Historic State Park (Alachua County)  
Econfina River Paddling Trail Corridor (Taylor County)  
Fanning Springs State Park (Gilchrist and Levy Counties)  
Florida National Scenic Trail (Bradford, Columbia, Hamilton, Madison, Suwannee, Taylor and Union Counties)  
FL Circumnavigational Saltwater Paddling Trail (Levy, Dixie and Taylor Counties)  
Four Freedoms Trail Corridor (Madison County)  
Gainesville to Branford Corridor (Alachua, Columbia and Suwannee Counties)  
Gainesville to Hawthorne Corridor (Alachua County)  
Gainesville to Newberry Trail Corridor (Alachua County)

Adopted May 23, 1996, Amended August 28, 1997, February 27, 2003, October 27, 2011 and August 23, 2018





Ichetucknee River Trail  
Lake Santa Fe Corridor (Alachua and Bradford Counties)  
Manatee Springs State Park (Levy County)  
Nature Coast Trail Corridor (Alachua, Dixie, Gilchrist and Levy Counties)  
Nature Coast Trail State Park (Gilchrist and Dixie Counties)  
Palatka to Hawthorne Corridor (Alachua County)  
Palatka to Lake City Corridor (Bradford, Columbia and Union Counties)  
Patono State Paddling Trail (Alachua County)  
Santa Fe River State Paddling Trail (Alachua, Columbia, Gilchrist, Lafayette and Suwannee Counties)  
State Road 121 Rail Trail Corridor (Alachua and Union Counties)  
State Road 320 Trail Corridor (Levy County)  
Steinhatchee River Trail (Dixie and Taylor Counties)  
Suwannee River Wilderness State Paddling Trail (Columbia, Dixie, Gilchrist, Hamilton, Lafayette, Levy, Madison and Suwannee Counties)  
Suwannee/Cedar Key Refuge Paddling Trails (Dixie and Levy Counties)  
Troy Springs State Park (Suwannee County)  
Waccasassa River Paddling Trail (Levy County)  
Waldo Road Corridor (Alachua and Bradford Counties)  
Wekiva River Paddling Trail (Levy County)  
Withlacoochee Gulf Preserve Paddling Trail (Levy County)  
Withlacoochee River (North) (Hamilton and Madison Counties)  
Withlacoochee South State Paddling Trail (Levy County)

## **E. Historical Facilities**

All districts, buildings, and sites listed in the National Register of Historic Places  
All pre-historic sites listed in the Florida Master Site File

## **F. Hospitals**

North Florida Regional Medical Center, Gainesville  
Shands Hospitals in Alachua County  
Veterans Administration Hospital, Gainesville  
Veterans Administration Hospital, Lake City

## **G. Landfills**

New River Solid Waste Management Association (Baker, Bradford, & Union counties)  
Suwannee Valley Solid Waste Management Association (Dixie, Jefferson, Madison, & Taylor counties)

## **H. Natural Gas Transmission Lines**

Natural Gas Transmission Lines

## **I. Military Facilities**

Camp Blanding



## J. State Prisons

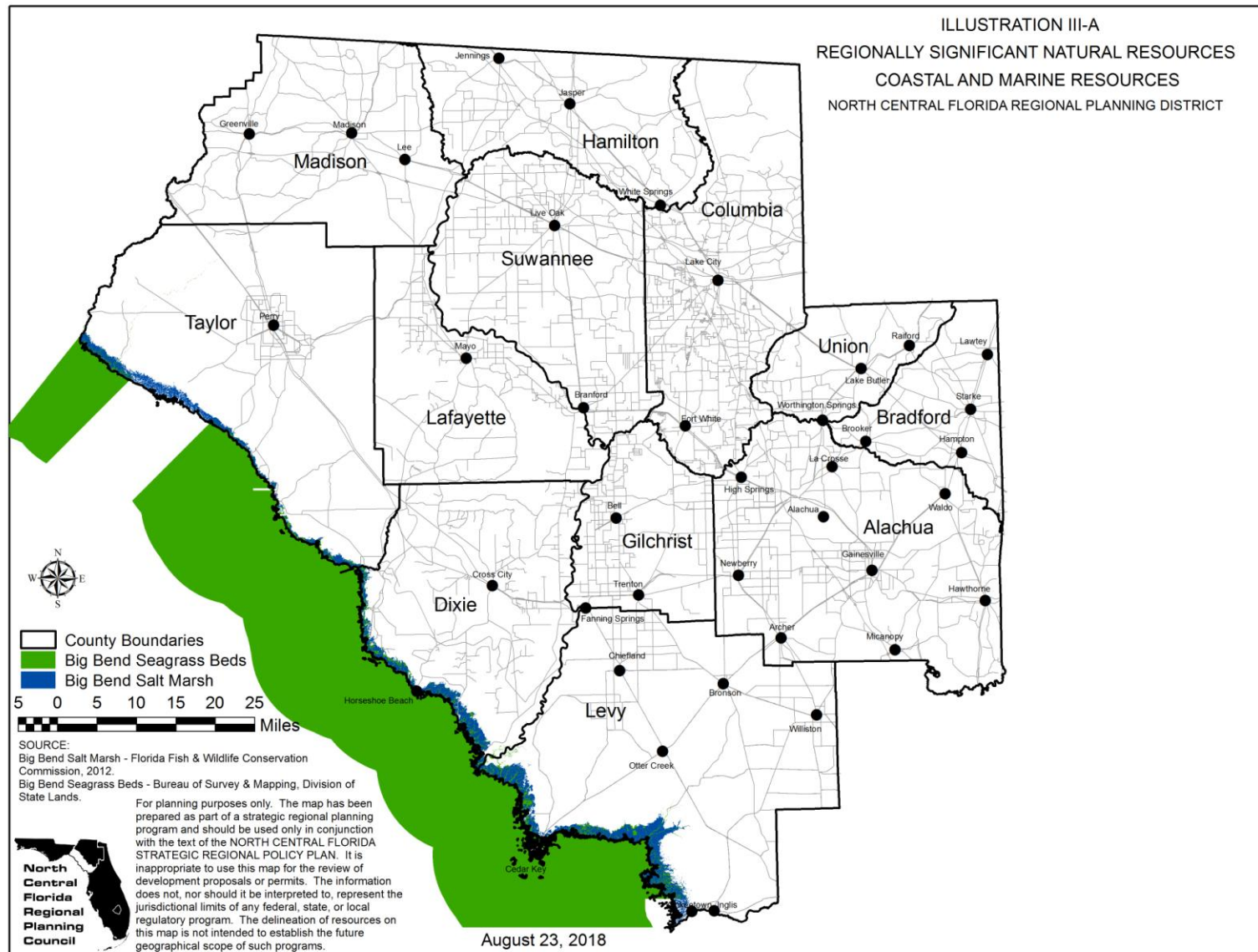
Columbia Correctional Institution, Columbia County  
Columbia Correction Institution Annex, Columbia County  
Cross City Correctional Institution, Dixie County  
Florida State Prison, Bradford County  
Florida State Prison, West Unit, Bradford County  
Gainesville Community Correctional Center, Alachua County  
Hamilton Correctional Institution, Hamilton County  
Hamilton Correctional Institution Annex, Hamilton County  
Lake Butler Reception and Medical Center, Union County  
Lake City Community Correctional Facility, Columbia County  
Lancaster Correctional Institution, Gilchrist County  
Lawtey Correctional Institute, Bradford County  
Madison Correctional Institution, Madison County  
Mayo Correctional Institution, Lafayette County  
New River Correctional Institution, Bradford County  
New River "O" Unit, Bradford County  
Reception and Medical Center, Main Unit, Union County  
Reception and Medical Center, West Unit, Union County  
Suwannee Correction Institution, Suwannee County  
Taylor Correction Institution, Taylor County  
Taylor Correction Institution Annex, Taylor County  
Union Correctional Institution, Union County

# Appendix C

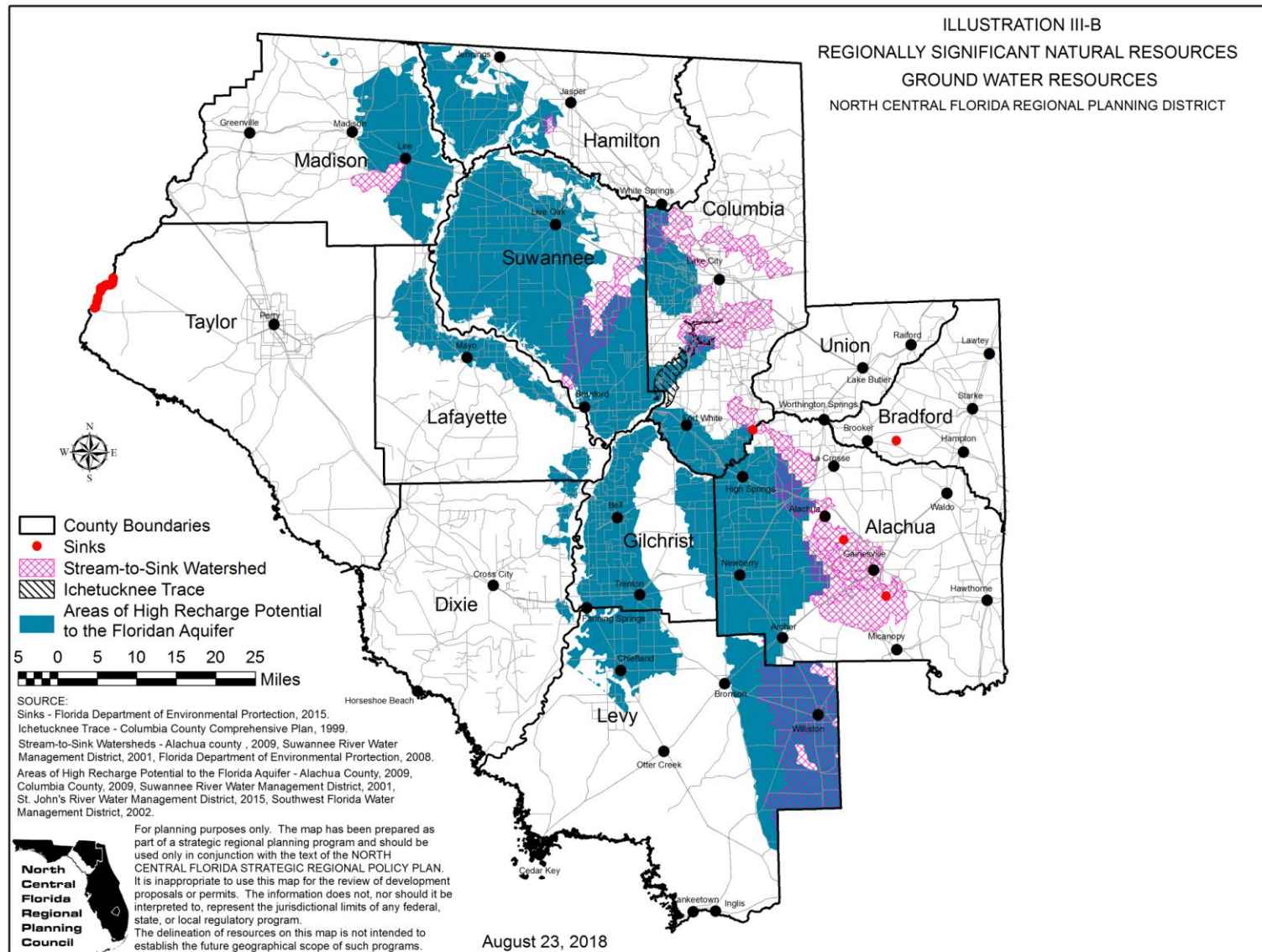
## Maps of Natural Resources of Regional Significance

Adopted May 23, 1996, Amended August 28, 1997, February 27, 2003, October 27, 2011 and August 23, 2018

THIS PAGE LEFT BLANK INTENTIONALLY

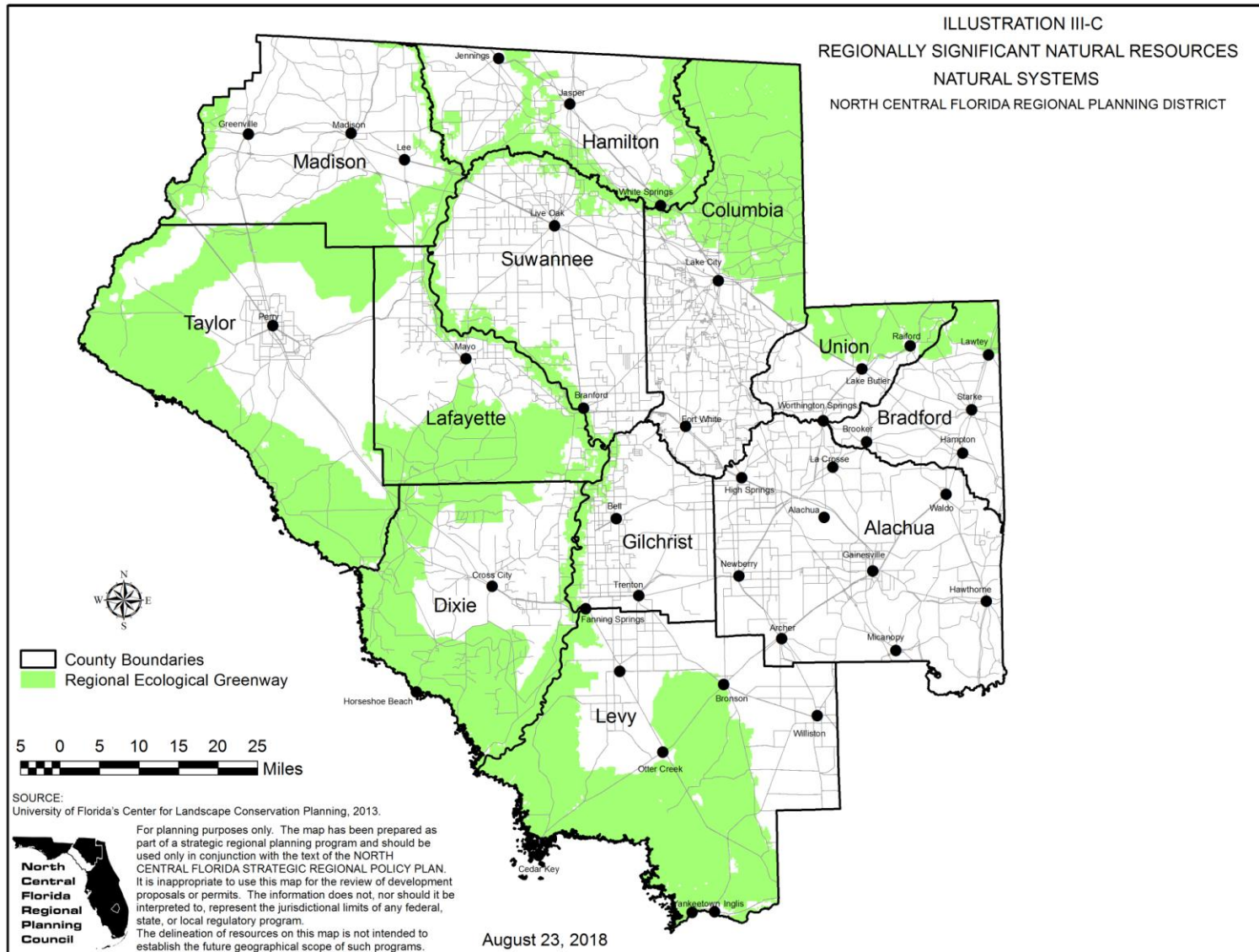


Adopted May 23, 1996, Amended August 28, 1997, February 27, 2003, October 27, 2011 and August 23, 2018

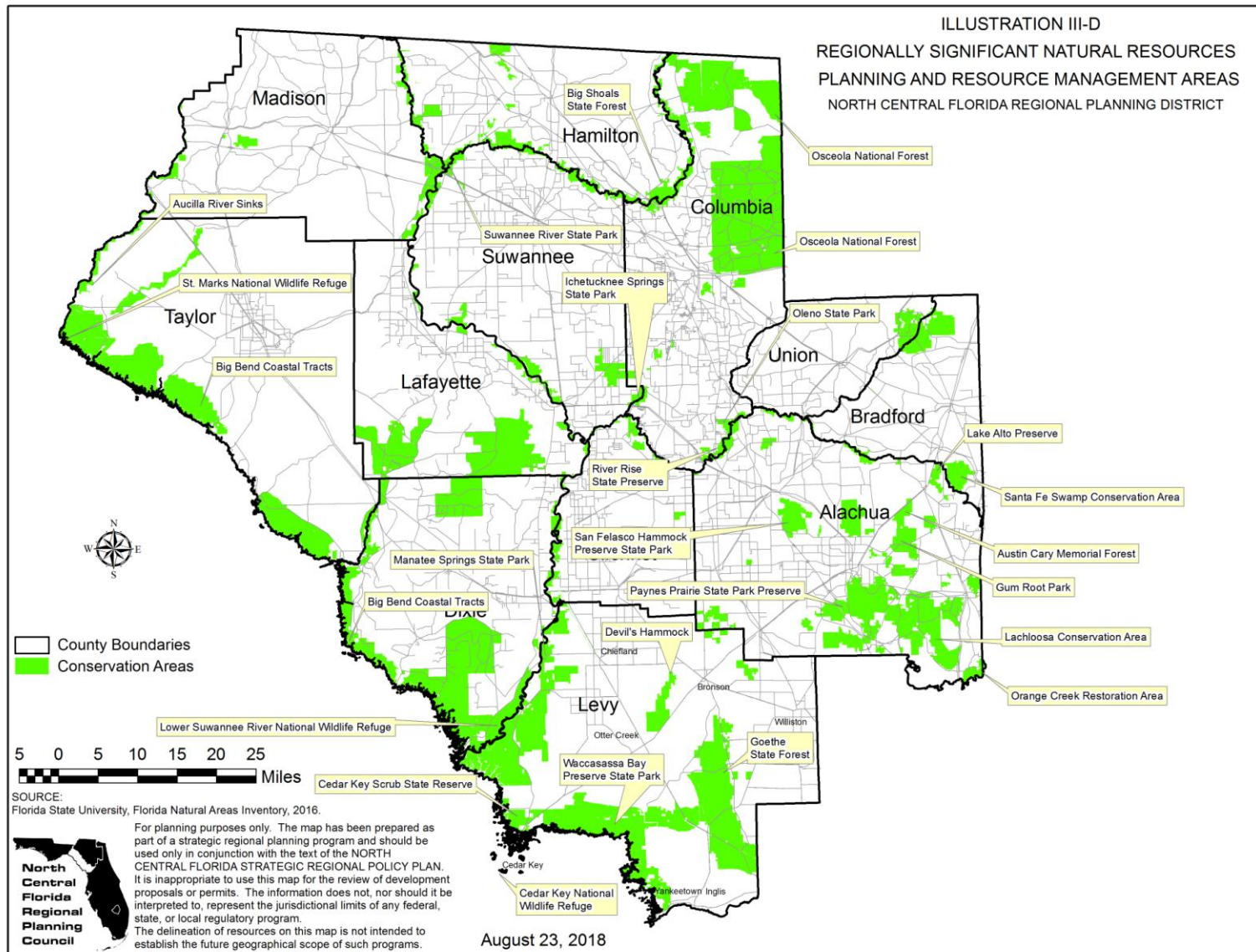


Adopted May 23, 1996, Amended August 28, 1997, February 27, 2003, October 27, 2011 and August 23, 2018



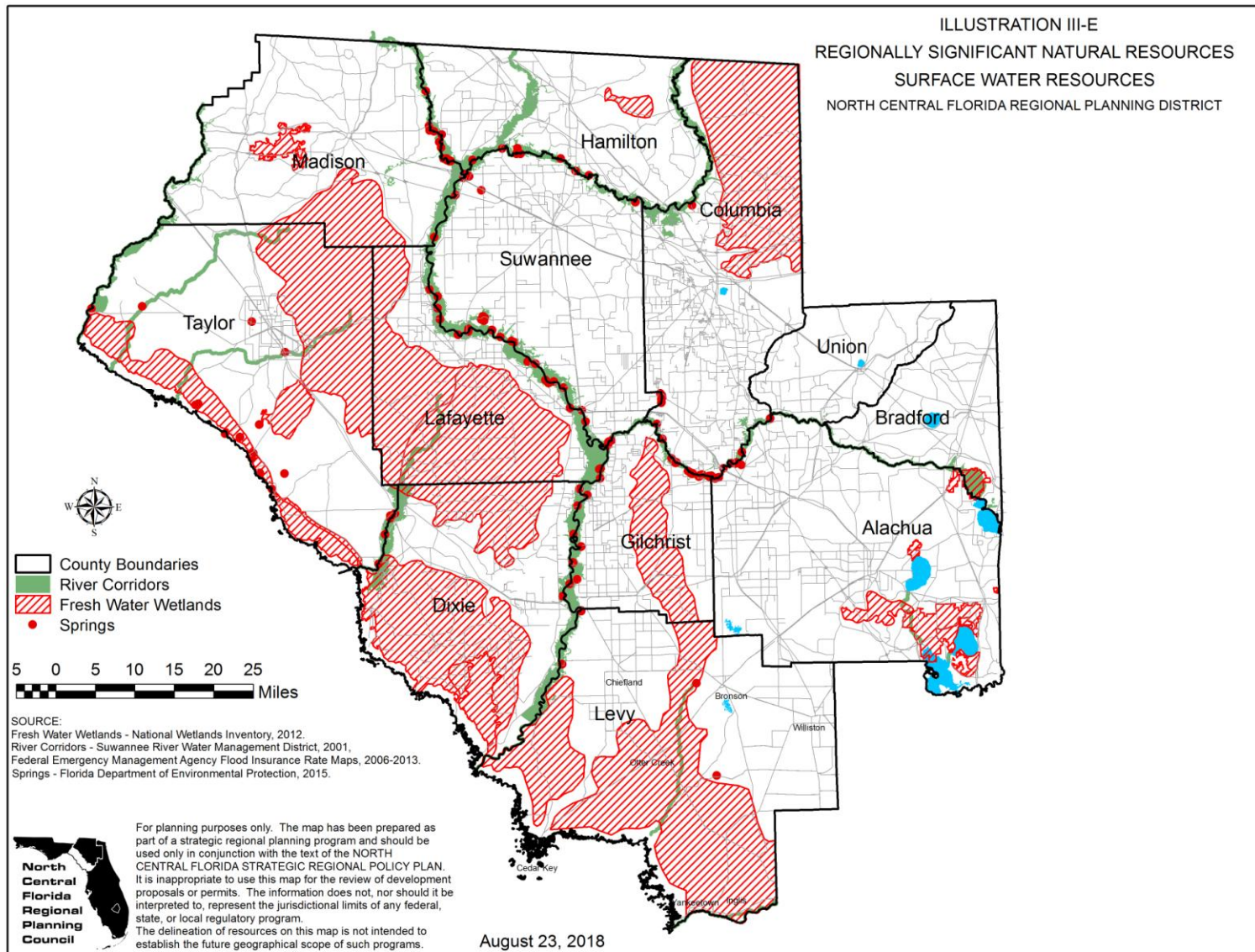


Adopted May 23, 1996, Amended August 28, 1997, February 27, 2003, October 27, 2011 and August 23, 2018



Adopted May 23, 1996, Amended August 28, 1997, February 27, 2003, October 27, 2011 and August 23, 2018





Adopted May 23, 1996, Amended August 28, 1997, February 27, 2003, October 27, 2011 and August 23, 2018



---

# North Central Florida Regional Planning Council

## *Strategic Regional Policy Plan Team*

Scott R. Koons, AICP, Executive Director

\* Steven C. Dopp, Senior Planner

\*\* Lauren Yeatter, AICP, Senior Planner, Geographic Information Systems

\*\* Jean Strong, Executive Assistant to the Executive Director

\* Primary Responsibility  
\*\* Secondary Responsibility

# North Central Florida Regional Planning Council

2009 NW 67th Place, Gainesville, FL 32653-1603



[www.ncfrpc.org](http://www.ncfrpc.org)