



50 *Years*

1969 - 2019

North Central Florida
Regional Planning Council



North Central Florida Regional Planning Council

Celebrating Our First Fifty Years
1969 - 2019

North Central Florida
Regional Planning Council





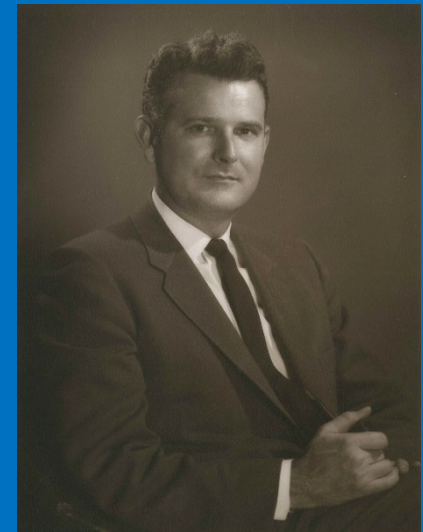
Clayton Curtis, Chair
City of Gainesville
1969-1970



Clayton Curtis, Chair
City of Gainesville
1970-1971



E. G. Cann, Chair
City of High Springs
1971-1972

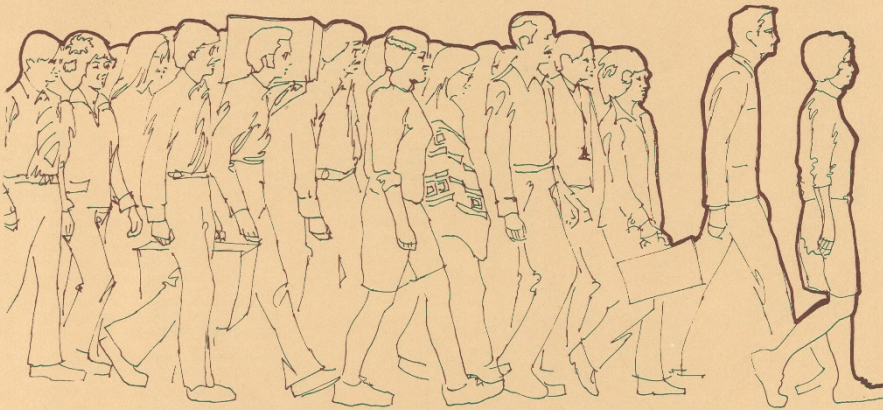


Jack Durrance, Chair
Alachua County
1972-1973



Clayton Curtis, Chair
City of Gainesville
1973-1974

Report '74



North Central Florida Regional Planning Council

Robert Spence, Chair
City of Hawthorne
1974-1975

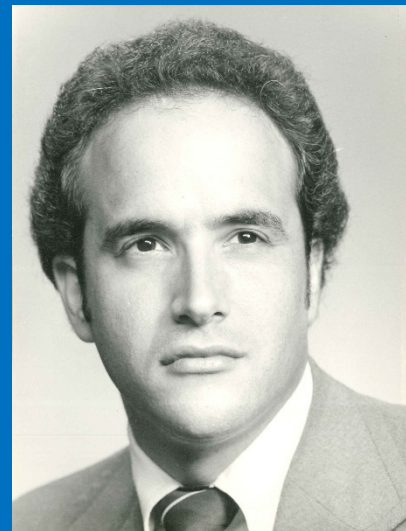


Samuel Holloway, Chair
City of Gainesville
1975-1976

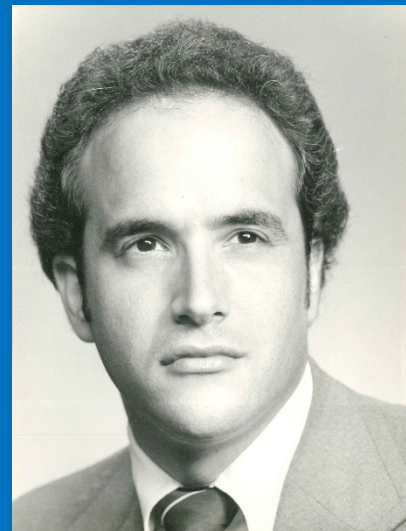
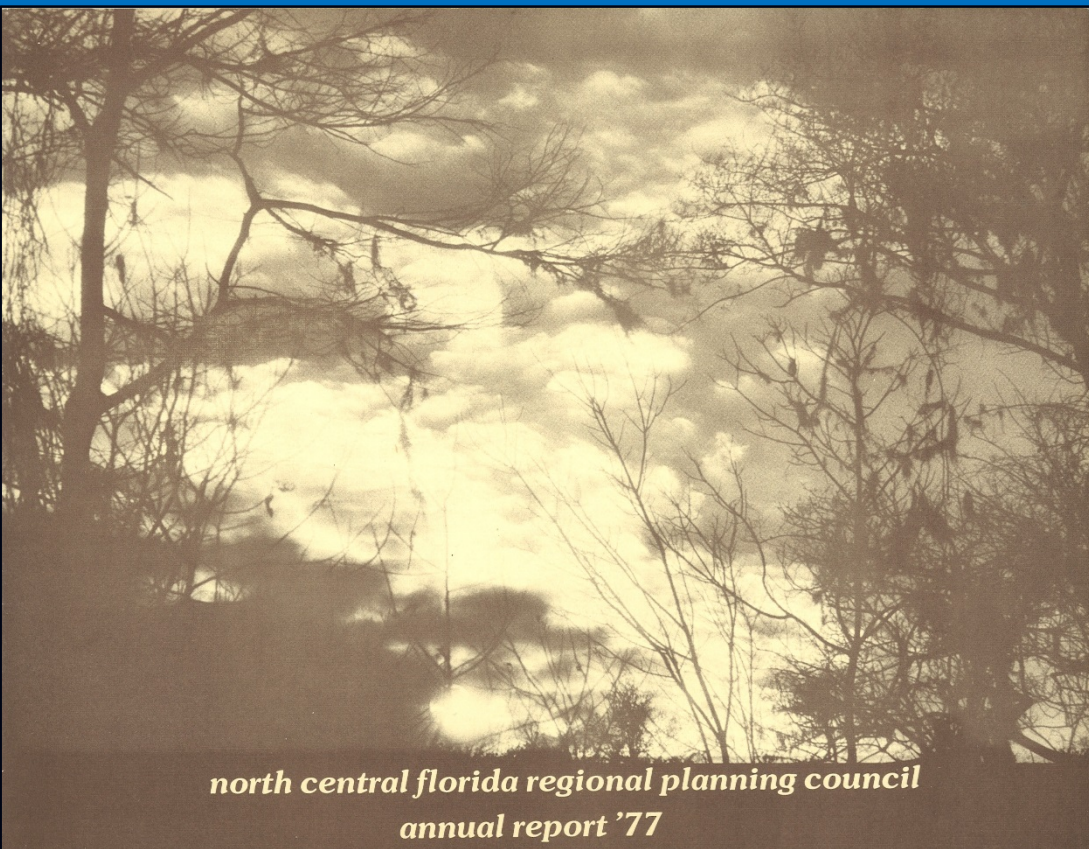
ANNUAL REPORT

NORTH CENT
RAL FLORIDA
REGIONAL
PLANNING
COUNCIL

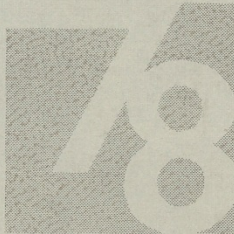
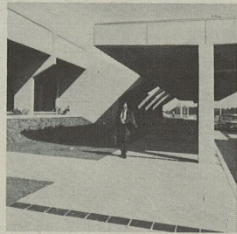
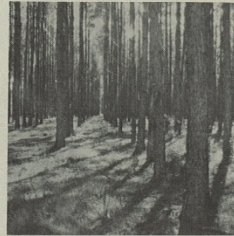
1976



Jonathan Wershow, Chair
Alachua County
1976-1977



Jonathan Wershow, Chair
Alachua County
1977-1978



north central florida regional planning council
annual report



Paul Riherd, Chair
Union County
1978-1979



**north central florida regional planning council
annual report
1979**

REGION • COUNCIL • CALENDAR

CHAIRMAN'S MESSAGE • COUNCIL MEMBERS

REGIONAL PLANNING • ENVIRONMENT

ENERGY

ECONOMIC DEVELOPMENT

LOCAL ASSISTANCE

CRIMINAL JUSTICE • TRANSPORTATION

COUNCIL REVIEW PROGRAMS

CITIZEN PARTICIPATION

COMMUNICATIONS • SPECIAL PROJECTS

TOMORROW • FINANCIAL REPORT



**Jerry Scarborough, Chair
Suwannee County
1979-1980**

1980

NORTH CENTRAL FLORIDA REGIONAL PLANNING COUNCIL



Roberta Lisle, Chair
City of Gainesville
1980-1981

1981
ANNUAL
REPORT

NORTH CENTRAL FLORIDA REGIONAL PLANNING COUNCIL



E. W. Hodges, Chair
Bradford County
1981-1982

**1982
ANNUAL
REPORT**

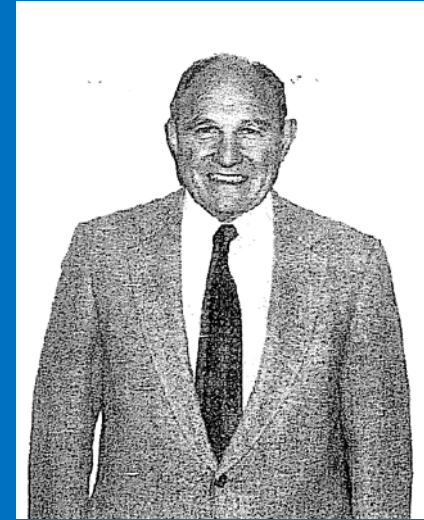
NORTH CENTRAL FLORIDA REGIONAL PLANNING COUNCIL



Thomas Coward, Chair
Alachua County
1982-1983

NORTH • CENTRAL • FLORIDA • REGIONAL • PLANNING • COUNCIL

1983
ANNUAL
REPORT



James Montgomery, Chair
Columbia County
1983-1984

North

Central

Florida

Regional

Planning

Council

Annual Report 1984



Jackie Barron, Chair
Gilchrist County
1984-1985

ANNUAL REPORT



1

9

8

5

*North
Central
Florida
Regional
Planning
Council*



Robert Milner, Chair
City of Starke
1985-1986

ANNUAL

REPORT



North
Central
Florida
Regional
Planning
Council



Jane Walker, Chair
Alachua County
1986-1987

1987



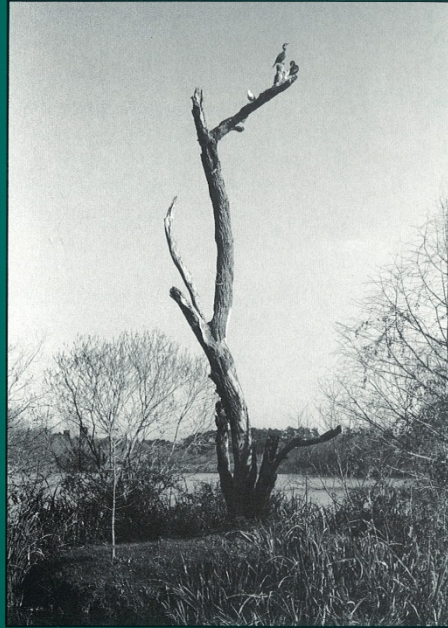
ANNUAL

North
Central
Florida
Regional
Planning
Council

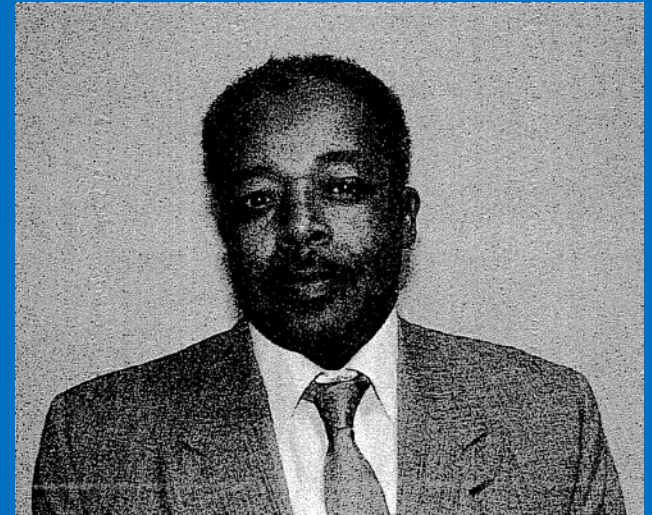


Beverly Hill, Chair
City of Gainesville
1987-1988

REPORT

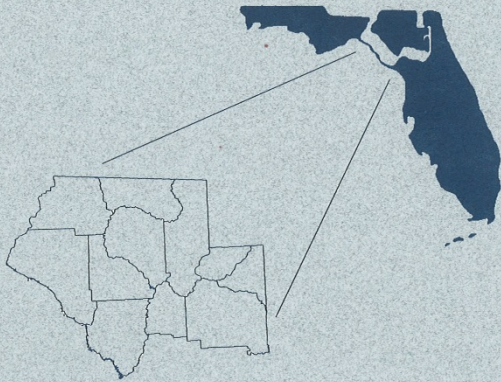


*North
Central
Florida
Regional
Planning
Council*



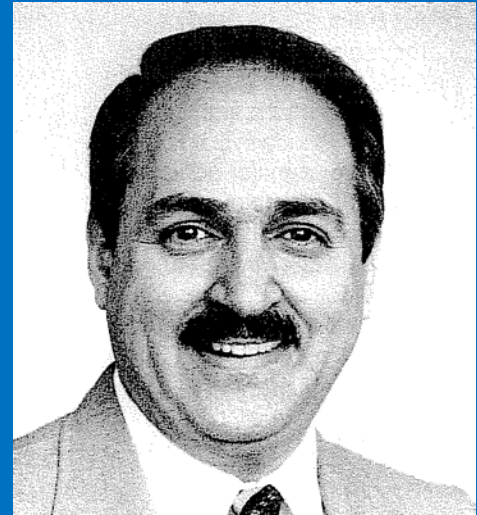
Thomas Demps, Chair
City of Perry
1988-1989

ANNUAL REPORT



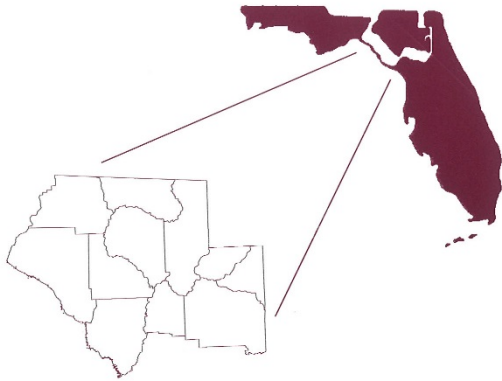
*North
Central
Florida
Regional
Planning
Council*

1 9 8 9



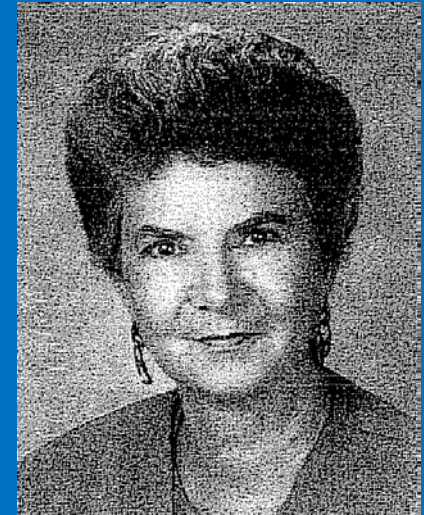
William Howard, Chair
Suwannee County
1989-1990

ANNUAL REPORT



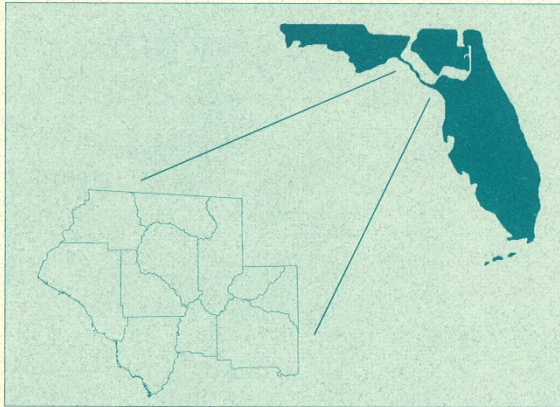
***North
Central
Florida
Regional
Planning
Council***

1 9 9 0



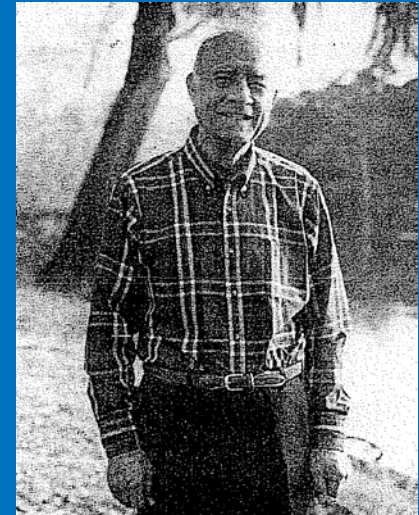
Leveda Brown, Chair
Alachua County
1990-1991

ANNUAL REPORT



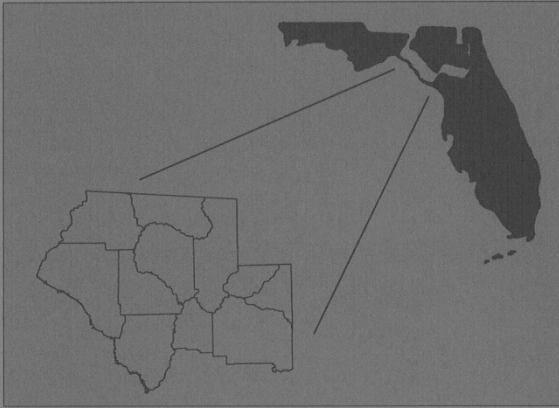
*North
Central
Florida
Regional
Planning
Council*

1 9 9 1



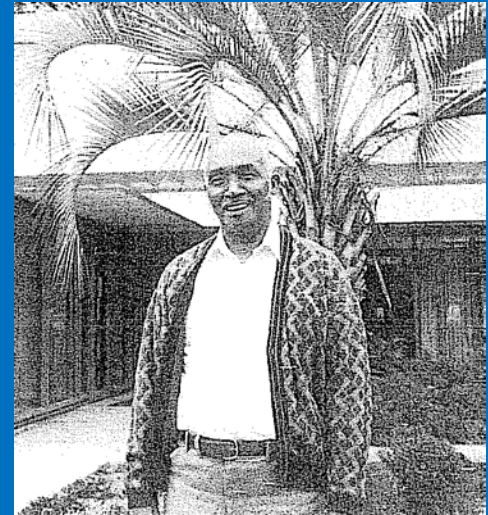
T. Gerald Witt, Chair
City of Lake City
1991-1992

ANNUAL REPORT



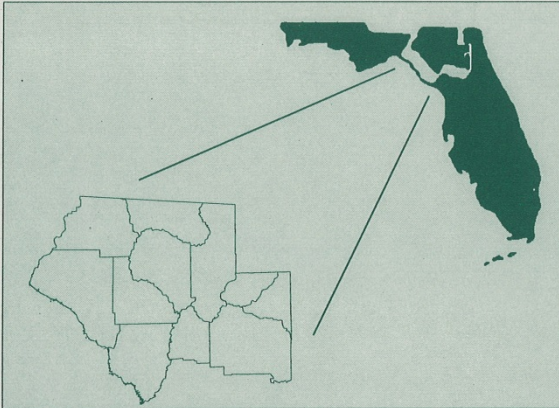
*North
Central
Florida
Regional
Planning
Council*

1 9 9 2



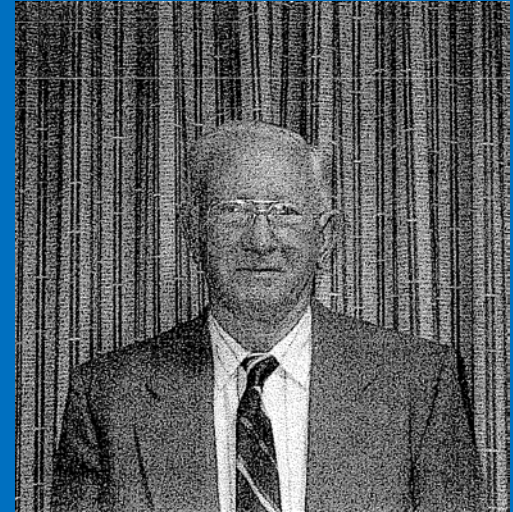
Eddie Martin, Chair
City of Hawthorne
1992-1993

ANNUAL REPORT



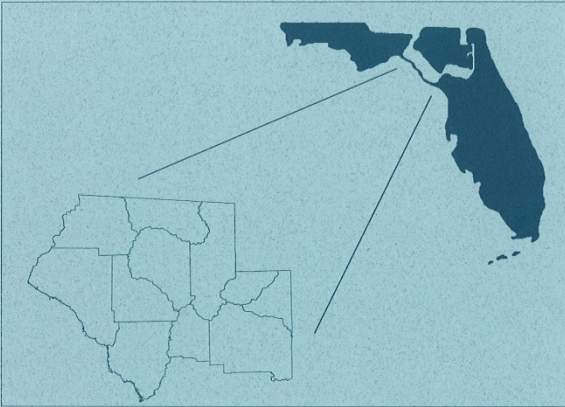
*North
Central
Florida
Regional
Planning
Council*

1 9 9 3



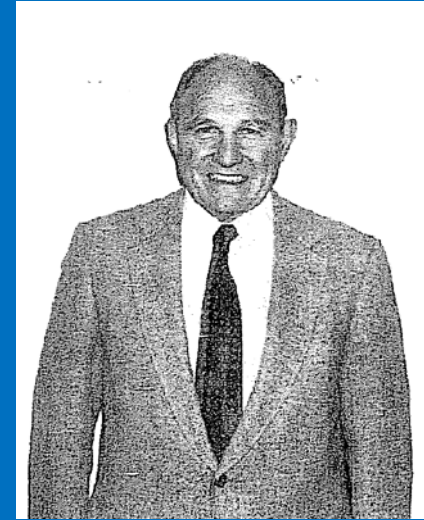
M. N. Sullivan, Chair
Lafayette County
1993-1994

ANNUAL REPORT



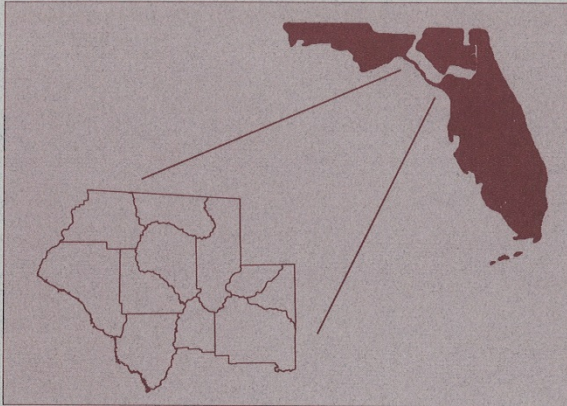
*North
Central
Florida
Regional
Planning
Council*

1 9 9 4



James Montgomery, Chair
Columbia County
1994-1995

ANNUAL REPORT



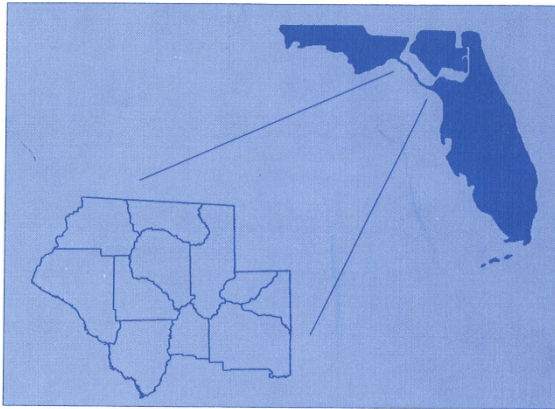
*North
Central
Florida
Regional
Planning
Council*

1 9 9 5



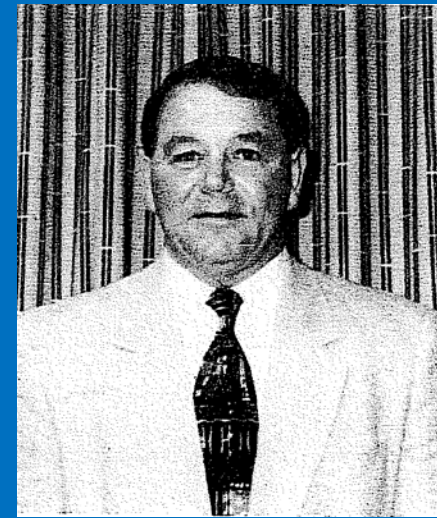
Joseph Riddick, Chair
Bradford County
1995-1996

ANNUAL REPORT



*North
Central
Florida
Regional
Planning
Council*

1 9 9 6

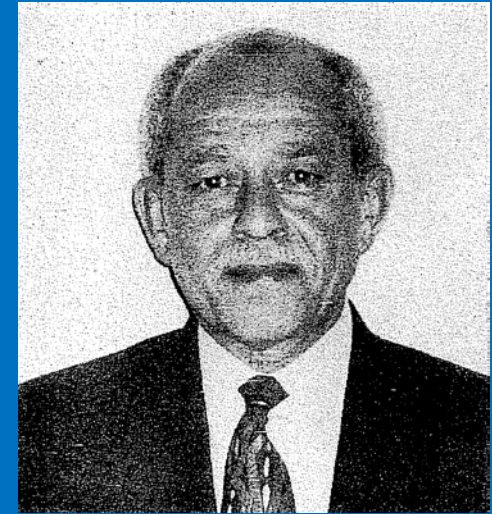


Garth Nobles, Jr., Chair
City of Live Oak
1996-1997

**NORTH CENTRAL FLORIDA
REGIONAL PLANNING COUNCIL**



1997 ANNUAL REPORT



Charles Chestnut, III, Chair
Alachua County
1997-1998

**NORTH CENTRAL FLORIDA
REGIONAL PLANNING COUNCIL**



1998 ANNUAL REPORT

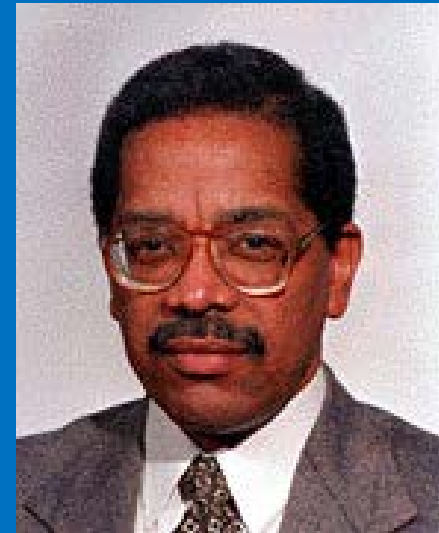


Thomas Sawyer, Chair
Columbia County
1998-1999

**NORTH CENTRAL FLORIDA
REGIONAL PLANNING COUNCIL**



1999 ANNUAL REPORT



Dale McPherson, Chair
City of Gainesville
1999-2000

**NORTH CENTRAL FLORIDA
REGIONAL PLANNING COUNCIL**



2000 ANNUAL REPORT

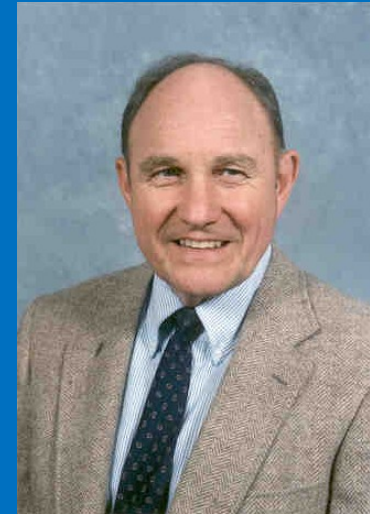


Ray Kirkland, Chair
City of Lake City
2000-2001

**NORTH CENTRAL FLORIDA
REGIONAL PLANNING COUNCIL**



2001 ANNUAL REPORT

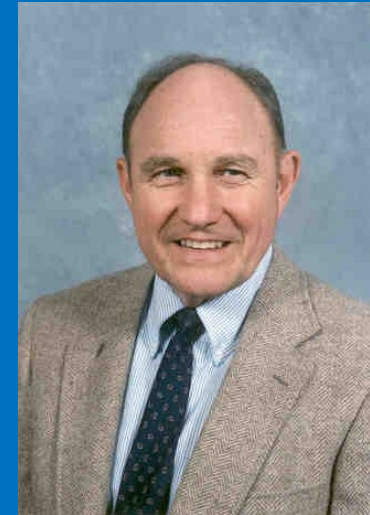


James Montgomery, Chair
Columbia County
2001-2002

NORTH CENTRAL FLORIDA REGIONAL PLANNING COUNCIL



2002 ANNUAL REPORT



James Montgomery, Chair
Columbia County
2002-2003

NORTH CENTRAL FLORIDA REGIONAL PLANNING COUNCIL



2003 ANNUAL REPORT



Louie Davis, Chair
City of Waldo
2003-2004

NORTH CENTRAL FLORIDA REGIONAL PLANNING COUNCIL

SERVING



2004 ANNUAL REPORT

Edd Sadler, Chair
Taylor County
2004

**NORTH CENTRAL FLORIDA
REGIONAL PLANNING COUNCIL**

SERVING



2005 ANNUAL REPORT



Eddie Martin, Chair
City of Hawthorne
2005

**NORTH CENTRAL FLORIDA
REGIONAL PLANNING COUNCIL**

SERVING



2005 ANNUAL REPORT



Charles Maultsby, Chair
Taylor County
2005-2006

**NORTH CENTRAL FLORIDA
REGIONAL PLANNING COUNCIL**

SERVING



2006 ANNUAL REPORT



Lorene J. Thomas, Chair
Dixie County
2006-2007



**North
Central
Florida
Regional
Planning
Council**

2007 ANNUAL REPORT



**Roy Ellis, Chair
Madison County
2007-2008**



2008 ANNUAL REPORT



Randy Hatch, Chair
Suwannee County
2008



2009 ANNUAL REPORT



Myra Valentine, Chair
City of Madison
2009



2009 ANNUAL REPORT



Myra Valentine, Chair
City of Madison
2009-2010

2010 ANNUAL REPORT



Louie Davis, Chair
City of Waldo
2010-2011



Roy Ellis, Chair
Madison County
2011-2012

2011 Annual Report

North Central Florida
Regional Planning Council



2012 Annual Report



North Central Florida
Regional Planning Council



Lorene J. Thomas, Chair
Dixie County
2012-2013

2013 Annual Report



North Central Florida
Regional Planning Council



Garth Nobles, Jr., Chair
City of Live Oak
2013-2014

2014 Annual Report



North Central Florida
Regional Planning Council



Carolyn B. Spooner, Chair
City of Starke
2014-2015

2015 Annual Report



Daniel Riddick, Chair
Bradford County
2015-2016

North Central Florida
Regional Planning Council



2016 Annual Report



North Central Florida
Regional Planning Council



Rick Davis, Chair
Madison County
2016-2017

2017 Annual Report



North Central Florida
Regional Planning Council



Lorene J. Thomas, Chair
Dixie County
2017-2018



Louie Davis, Chair
City of Waldo
2018-2019



North Central Florida Regional Planning Council

2009 NW 67th Place
Gainesville, FL 32653-1603
352.955.2200
www.ncfrpc.org

