



# North Central Florida Regional Planning Council



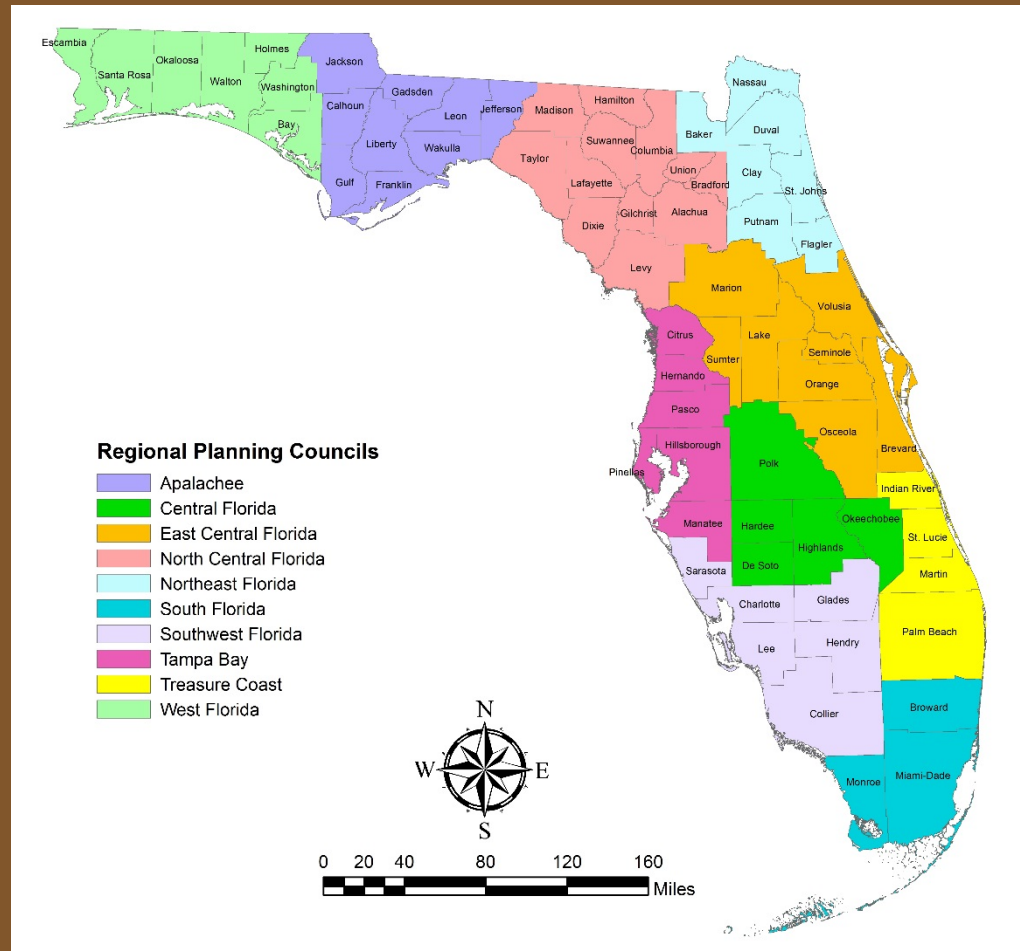
# Overview

- ❑ Who We Are
- ❑ What We Do
- ❑ Summary





# Regional Planning Councils



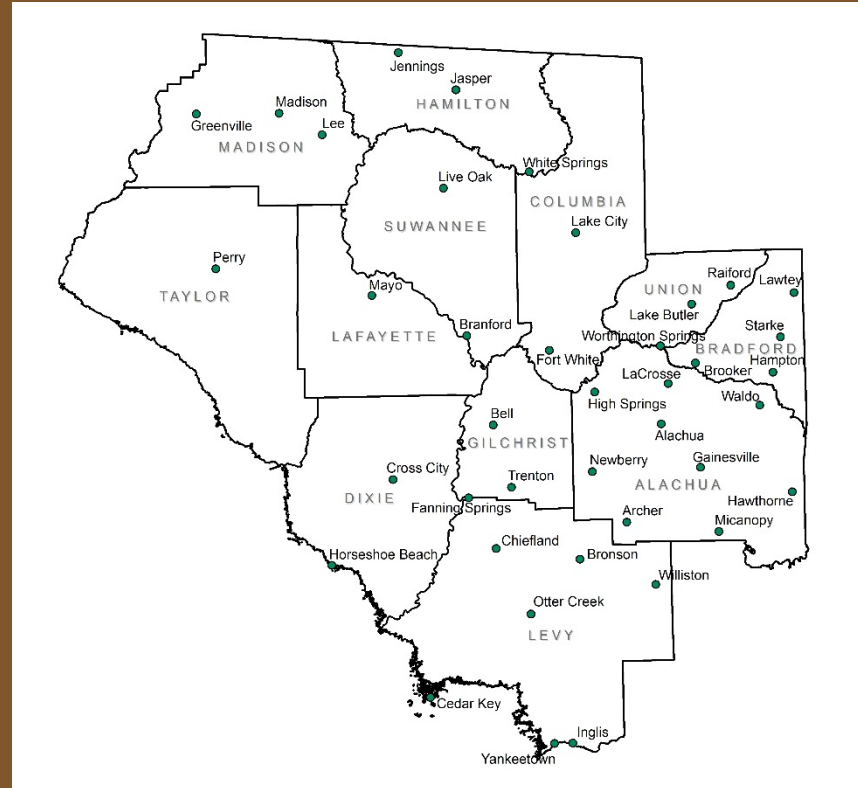
# Mission Statement

*To improve the quality of life  
of the Region's citizens,  
by coordinating growth management,  
protecting regional resources,  
promoting economic development and  
providing technical services to local governments.*



# The Region

- ❑ 12 counties and 40 municipalities (13 member cities)
- ❑ 8,000 square miles
- ❑ 500,000 population



# The Council

- ❑ 2/3 Local Elected Officials and 1/3 Gubernatorial Appointees
- ❑ Counties Mandatory and Cities Voluntary





# The Council

## ❑ Member Counties

- ❑ Alachua County
- ❑ Bradford County
- ❑ Columbia County
- ❑ Dixie County
- ❑ Gilchrist County
- ❑ Hamilton County
- ❑ Lafayette County
- ❑ Levy County
- ❑ Madison County
- ❑ Suwannee County
- ❑ Taylor County
- ❑ Union County



# The Council

## ❑ Member Cities

- ❑ Alachua
- ❑ Archer
- ❑ Gainesville
- ❑ Hawthorne
- ❑ High Springs
- ❑ Jasper
- ❑ Lake City
- ❑ Live Oak
- ❑ Madison
- ❑ Newberry
- ❑ Perry
- ❑ Starke
- ❑ Waldo





# The Council

## ❑ Executive Committee Members

- ❑ Louie Davis, Chair
- ❑ Robert Wilford, Vice-Chair
- ❑ Larry Sessions, Secretary-Treasurer
- ❑ Charles Chestnut IV, Executive Committee Member
- ❑ Lorene Thomas, Immediate Past Chair



# The Council

## ❑ Ex-Officio Members

- ❑ Florida Department of Economic Opportunity
- ❑ Florida Department of Environmental Protection
- ❑ Florida Department of Transportation
- ❑ Southwest Florida  
Water Management District
- ❑ St. Johns River  
Water Management District
- ❑ Suwannee River  
Water Management District



# Regional Planning Council Programs

## □ Regional

- North Central Florida Strategic Regional Policy Plan contains goals and policies to assist in the preservation of the regional water supply
  - Affordable Housing
  - Economic Development
  - Emergency Preparedness
  - Natural Resources of Regional Significance
  - Regional Transportation





# Regional Planning Council Programs

- ❑ Regional Review Activities
  - ❑ Council designated as areawide clearinghouse review agency
    - ❑ Federally funded projects
    - ❑ Other review activities



# Regional Planning Council Programs

## □ Regional Review Activities

### □ 100 projects

- Applications for federal assistance totaling \$13.2 million
- 58 local government comprehensive plan amendments
- 19 U.S. Department of Housing and Urban Development Community Development Block Grant applications



# Regional Planning Council Programs

## □ Regional Review Activities

### □ 100 projects (Continued)

- 18 Federal Transit Administration grant applications
- 4 U.S. Department of Agriculture grant/loan applications
- 1 other review item





# Regional Planning Council Programs

- ❑ Public Safety and Regulatory Compliance
  - ❑ Local Emergency Planning Committee
    - ❑ Updated Regional Emergency Response Plan



# Regional Planning Council Programs

- ❑ Public Safety and Regulatory Compliance
  - ❑ Regional Hazardous Materials Response Team
    - ❑ Alachua County
    - ❑ Bradford County
    - ❑ Columbia County
    - ❑ Dixie County
    - ❑ Gilchrist County
    - ❑ Lafayette County
    - ❑ Suwannee County
    - ❑ Union County
    - ❑ Gainesville
    - ❑ Lake City
    - ❑ Starke



# Regional Planning Council Programs

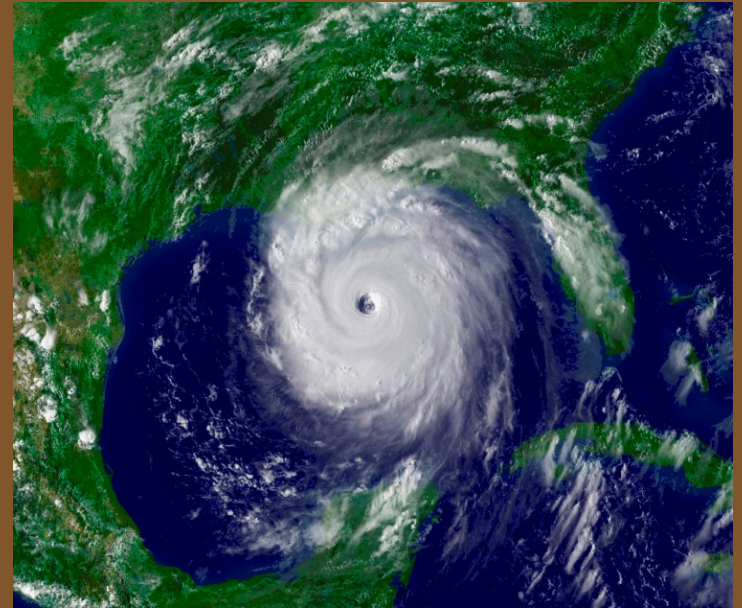
- ❑ Public Safety and Regulatory Compliance
  - ❑ Regional Hazardous Materials Response Team
    - ❑ Completed two tabletop exercises for first responders





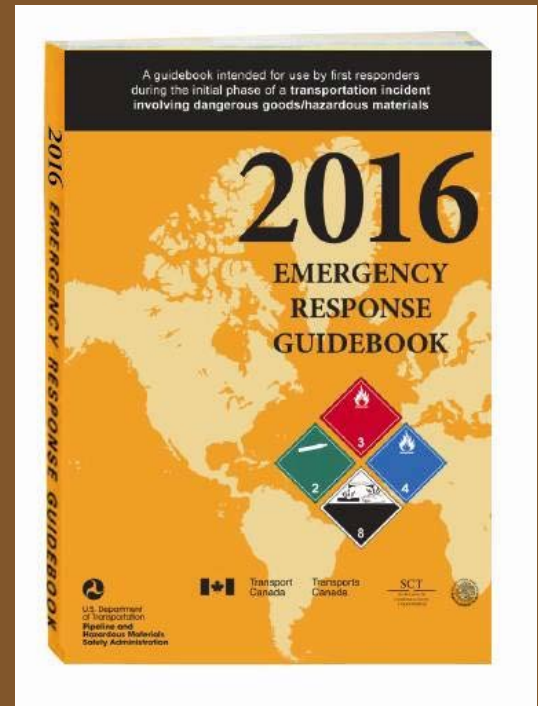
# Regional Planning Council Programs

- ❑ Public Safety and Regulatory Compliance
  - ❑ Emergency Management
    - ❑ Maintained Regional Evacuation Study



# Regional Planning Council Programs

- ❑ Public Safety and Regulatory Compliance
  - ❑ First Responder Training
    - ❑ Coordinated 29 hazardous materials emergency response training classes
      - ❑ Over 395 emergency responders completed over 6,100 hours of training
  - ❑ Distributed copies of Emergency Response Guidebook to first responders



# Regional Planning Council Programs

## ❑ Public Safety and Regulatory Compliance

### ❑ Hazardous Waste

#### ❑ Conducted hazardous waste compliance site visits for ten counties

- ❑ Bradford County
- ❑ Columbia County
- ❑ Dixie County
- ❑ Gilchrist County
- ❑ Hamilton County
- ❑ Lafayette County
- ❑ Levy County
- ❑ Madison County
- ❑ Suwannee County
- ❑ Union County





# Regional Planning Council Programs

## □ Economic Development

### □ Economic Development Planning

- Council designated an Economic Development District in 1978 by U.S. Department of Commerce, Economic Development Administration
- Council serves as primary regional economic development planning organization for region

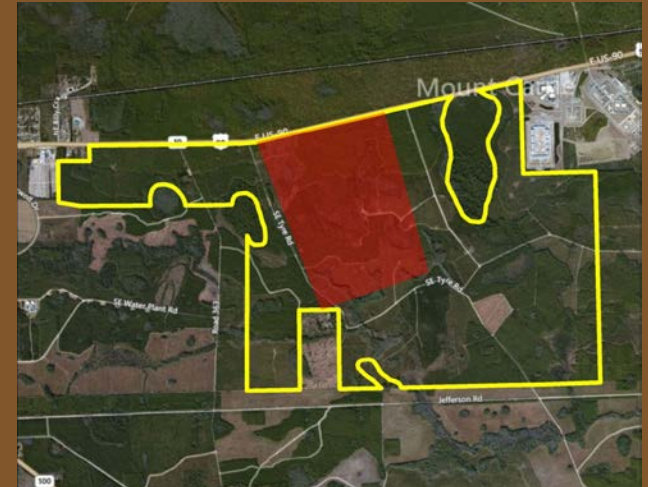


# Regional Planning Council Programs

## ❑ Economic Development

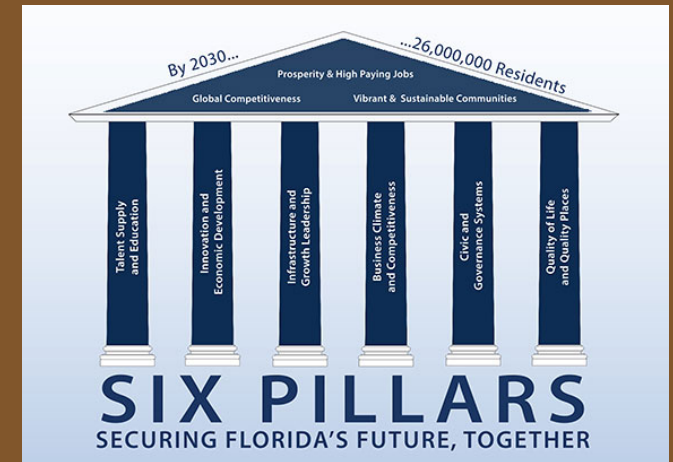
### ❑ Economic Development Planning

- ❑ Provided technical assistance to local governments and economic development organizations to promote economic growth of the region
- ❑ Completed two economic development project impact analysis reports



# Regional Planning Council Programs

- ❑ Economic Development
  - ❑ Comprehensive Economic Development Strategy
    - ❑ Uses Florida Chamber Foundation Six Pillars to Secure Florida's Future
  - ❑ Coordinates with other regional planning councils
  - ❑ Aligns with State Economic Development Plan and private business





# Regional Planning Council Programs

- ❑ Economic Development
  - ❑ Comprehensive Economic Development Strategy
    - ❑ Promotes initiatives that support regional Comprehensive Economic Development Strategy
    - ❑ Reported over 300 jobs created and over \$35 million private investment leveraged

North Central Florida  
Comprehensive Economic  
Development Strategy  
2018-2022

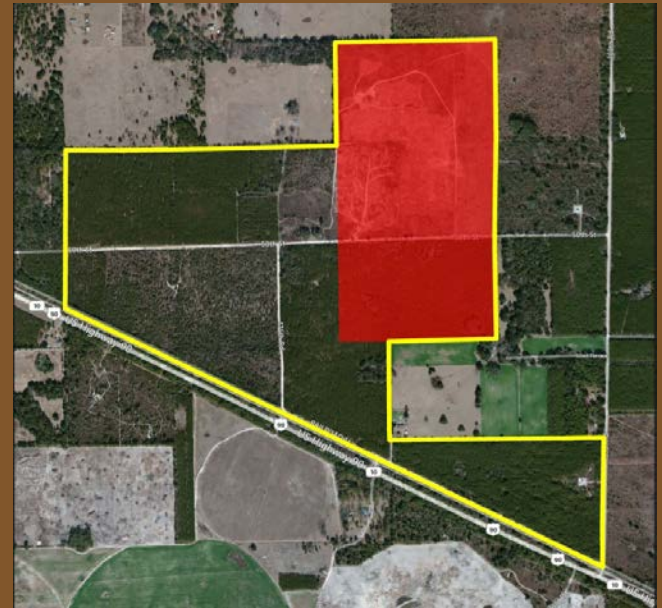


North Central Florida  
Regional Planning Council  
September 2017



# Regional Planning Council Programs

- ❑ Economic Development
  - ❑ Regional Comprehensive Economic Development Strategies
    - ❑ Support two rural economic development catalyst sites
    - ❑ Promote regional tourism
    - ❑ Create strategies to increase labor force in healthcare and life sciences industries



# Regional Planning Council Programs

- ❑ Economic Development
  - ❑ Regional Comprehensive Economic Development Strategies
    - ❑ Seek opportunities to improve multi-modal infrastructure
    - ❑ Expand and support regional business incubators and research parks





# Regional Planning Council Programs

## ❑ Economic Development

### ❑ The Original Florida Tourism Task Force

- ❑ Created by Council in 1992
- ❑ Promotes the development of nature, culture and heritage-based tourism
- ❑ Council provides staff services to Task Force



# Regional Planning Council Programs

## ❑ Economic Development

### ❑ The Original Florida Tourism Task Force

- ❑ Alachua County
- ❑ Bradford County
- ❑ Columbia County
- ❑ Dixie County
- ❑ Gilchrist County
- ❑ Hamilton County
- ❑ Jefferson County
- ❑ Lafayette County
- ❑ Levy County
- ❑ Madison County
- ❑ Suwannee County
- ❑ Taylor County
- ❑ Union County
- ❑ Wakulla County



# Regional Planning Council Programs

## ❑ Economic Development

### ❑ The Original Florida Tourism Task Force

- ❑ Updated and maintained website  
VisitNaturalNorthFlorida.com
- ❑ Coordinated travel  
show participation
- ❑ Distributed collateral  
materials to meet goals  
of Task Force
- ❑ Innovation Award for  
Experience North Florida  
By Bike Project





# Regional Planning Council Programs

## ❑ Local Government Assistance

### ❑ Comprehensive Planning

- ❑ Assisted counties and cities in complying with Community Planning Act



# Regional Planning Council Programs

## ❑ Local Government Assistance

### ❑ Comprehensive Planning

❑ Provided comprehensive planning assistance to six counties

- ❑ Bradford County
- ❑ Columbia County
- ❑ Dixie County
- ❑ Lafayette County
- ❑ Taylor County
- ❑ Union County



# Regional Planning Council Programs

## ❑ Local Government Assistance

### ❑ Comprehensive Planning

#### ❑ Provided comprehensive planning assistance to 12 municipalities

- ❑ Archer
- ❑ Cedar Key
- ❑ Chiefland
- ❑ Fanning Springs
- ❑ High Springs
- ❑ Inglis
- ❑ Lake Butler
- ❑ Madison
- ❑ Mayo
- ❑ Micanopy
- ❑ Perry
- ❑ Starke





# Regional Planning Council Programs

## ❑ Local Government Assistance

### ❑ Comprehensive Planning

- ❑ 130 development applications
  - ❑ 50 comprehensive plan map and text amendments
  - ❑ 61 land development regulation map and text amendments
  - ❑ 13 special exceptions and special permits
  - ❑ 6 other items



# Regional Planning Council Programs

- ❑ Local Government Assistance
  - ❑ Comprehensive Planning
    - ❑ Prepared concurrency assessments for roads, water, sanitary sewer, solid waste, storm water drainage and recreation facilities



# Regional Planning Council Programs

## ❑ Local Government Assistance

### ❑ Community Development Block Grants

#### ❑ Purpose

- ❑ Reduce and reverse community decline and restore community vitality

#### ❑ Grants in four categories

- ❑ Housing
- ❑ Neighborhood Revitalization
- ❑ Commercial Revitalization
- ❑ Economic Development

- ❑ Secured \$56.6 million for 110 projects over 41 years





# Regional Planning Council Programs

- ❑ Local Government Assistance
  - ❑ Community Development Block Grants
    - ❑ Applications for Housing, Commercial Revitalization and Neighborhood Revitalization



# Regional Planning Council Programs

## ❑ Local Government Assistance

### ❑ Community Development Block Grants

#### ❑ Provided administrative assistance

- ❑ Town of Mayo  
Housing - \$650,000



# Regional Planning Council Programs

## □ Transportation

### □ Metropolitan Transportation Planning

#### □ 2040 Long Range Transportation Plan

- Addresses highway, transit, bicycle and pedestrian transportation needs

#### □ Transportation Improvement Plan

- Includes \$53.9 million of transportation projects for Fiscal Year 2017-18





# Regional Planning Council Programs

## □ Transportation

### □ Metropolitan Transportation Planning

- State Road 24 (Archer Road)  
Four-Lane Project Planning  
Development and Environment  
Study
- State Road 121 (NW 34th Street)  
Left Turn Lanes Project
- State Roads 26 & 26A/State Road 121  
(West University Avenue/SW 34th Street)  
Safety Project Study



# Regional Planning Council Programs

## ❑ Transportation

### ❑ Transportation Disadvantaged

- ❑ Provided access to employment, healthcare, education and other life-sustaining activities for elderly, disabled or low-income residents
- ❑ Coordinated over 239,000 trips in the region
- ❑ Majority of trips were provided for medical purposes



# Regional Planning Council Programs

## ❑ Transportation

### ❑ Transportation Disadvantaged

#### ❑ Council is official planning agency for

- ❑ Bradford County
- ❑ Columbia County
- ❑ Dixie County
- ❑ Gilchrist County
- ❑ Hamilton County
- ❑ Lafayette County
- ❑ Levy County
- ❑ Madison County
- ❑ Suwannee County
- ❑ Union County





# Regional Planning Council Programs

## ❑ Transportation

### ❑ Transportation Disadvantaged

- ❑ Metropolitan Transportation Planning Organization for the Gainesville Urbanized Area is the official planning agency for Alachua County



# Regional Planning Council Team

## Team Leaders

**Scott R. Koons, AICP**  
Executive Director

**Andre M. Davis**  
Finance Director

**Dwayne L. Mundy**  
Public Safety and Regulatory Compliance  
Program Director

**Kevin D. Parrish**  
Information Technology and  
Property Management Director



# Regional Planning Council Team

## Team Members

**Steven Dopp**, Senior Planner

**Michael Escalante**, AICP, Senior Planner

**Carmelita Franco**, Planning Administrative Assistant

**Lynn Franson-Godfrey**, AICP, Senior Planner

**Sandra Joseph**, Senior Planner

**Jean Strong**, Executive Assistant to the  
Executive Director

**Tara Tucker**, Secretary II

**Lauren Yeatter**, AICP, Senior Planner





# Summary

- ❑ 10 Regional Planning Councils
- ❑ 2/3 Local Elected Officials and 1/3 Gubernatorial Appointees
- ❑ Planning and Coordinating Role
- ❑ Programs
  - ❑ Regional
  - ❑ Public Safety
  - ❑ Economic Development
  - ❑ Local Government Assistance
  - ❑ Transportation





## North Central Florida Regional Planning Council

2009 NW 67th Place  
Gainesville, FL 32653-1603  
352.955.2200  
[www.ncfrpc.org](http://www.ncfrpc.org)

