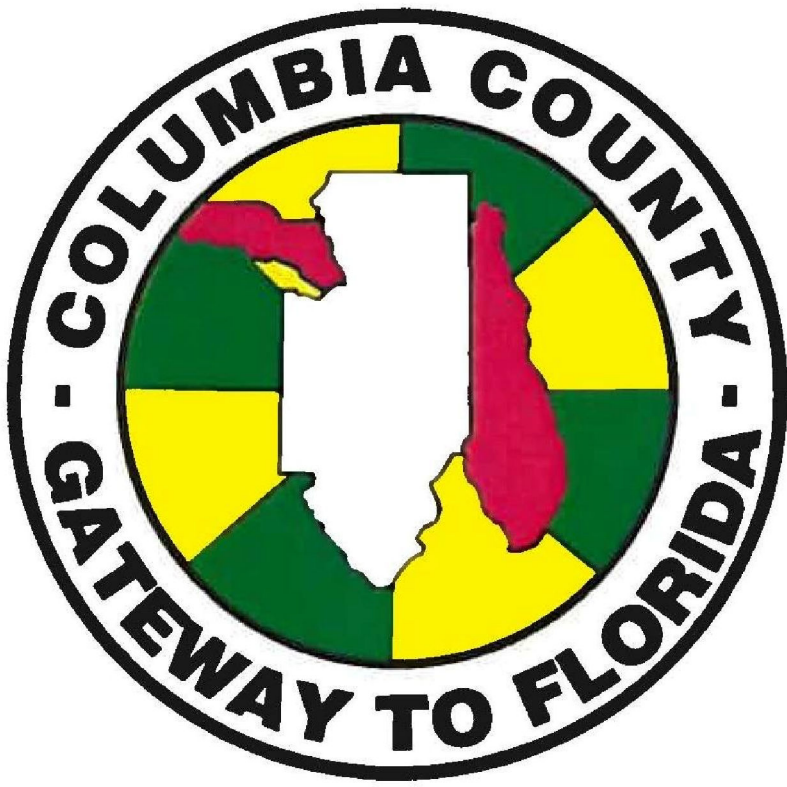
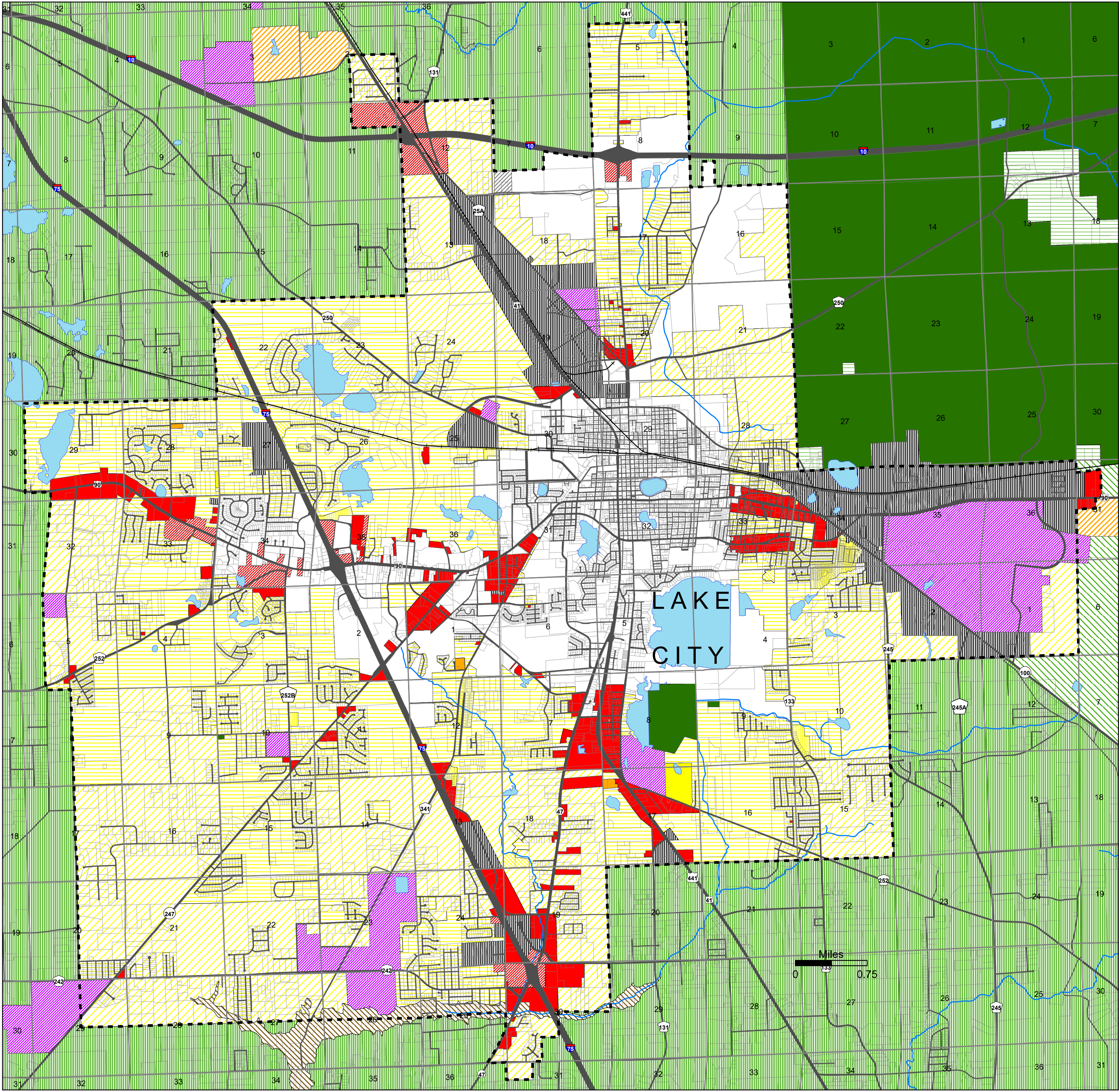


# Columbia County

Future Land Use Plan Map 2040



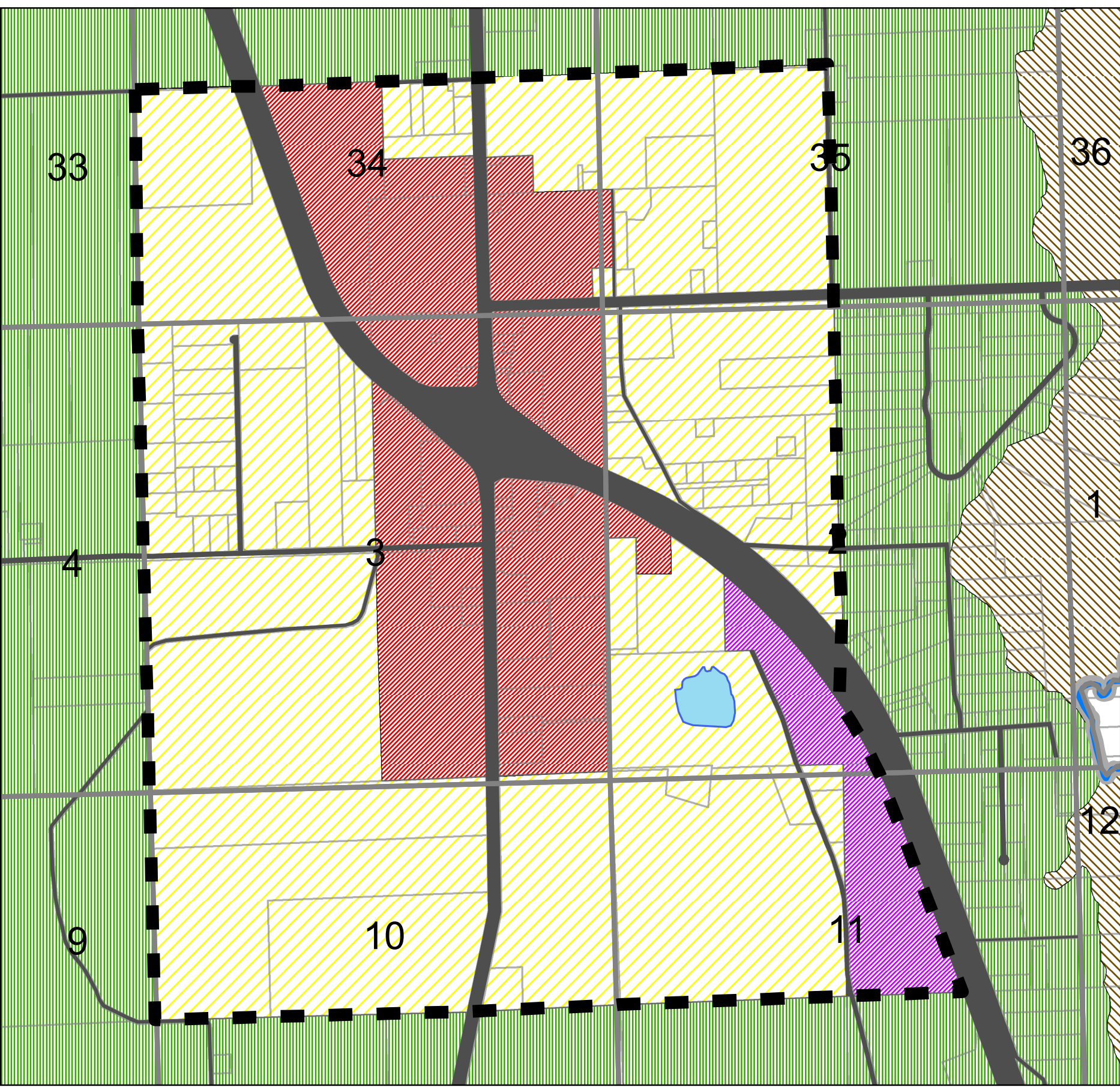
Inset Map "A"



ADOPTED ON JUNE 13, 1991 BY ORDINANCE NO. 91-6  
AMENDED ON DECEMBER 16, 1993 BY ORDINANCE NO. 93-9  
AMENDED ON SEPTEMBER 7, 1995 BY ORDINANCE NOS. 95-18  
AMENDED ON SEPTEMBER 21, 1995 BY ORDINANCE NOS. 95-22 THROUGH 95-24  
AMENDED ON OCTOBER 17, 1995 BY ORDINANCE NO. 95-28  
AMENDED ON NOVEMBER 16, 1995 BY ORDINANCE NOS. 95-34 THROUGH 95-37  
AMENDED ON JANUARY 18, 1996 BY ORDINANCE NOS. 96-4 THROUGH 96-7  
AMENDED ON APRIL 4, 1996 BY ORDINANCE NO. 96-15  
AMENDED ON APRIL 18, 1996 BY ORDINANCE NO. 96-16  
AMENDED ON JUNE 20, 1996 BY ORDINANCE NOS. 96-19 AND 96-20  
AMENDED ON JULY 16, 1996 BY ORDINANCE NOS. 96-22 THROUGH 96-24  
AMENDED ON OCTOBER 17, 1996 BY ORDINANCE NO. 96-30  
AMENDED ON FEBRUARY 6, 1997 BY ORDINANCE NO. 97-3  
AMENDED ON MAY 1, 1997 BY ORDINANCE NOS. 97-10 AND 97-11  
AMENDED ON JUNE 5, 1997 BY ORDINANCE NOS. 97-14 THROUGH 97-21  
AMENDED ON JULY 17, 1997 BY ORDINANCE NO. 97-27  
AMENDED ON SEPTEMBER 18, 1997 BY ORDINANCE NO. 97-33  
AMENDED ON OCTOBER 30, 1997 BY ORDINANCE NOS. 97-17 AND 97-22  
AMENDED ON APRIL 2, 1998 BY ORDINANCE NO. 98-2  
AMENDED ON MAY 21, 1998 BY ORDINANCE NOS. 98-9 THROUGH 98-19  
AMENDED ON DECEMBER 17, 1998 BY ORDINANCE NO. 98-32  
AMENDED ON JULY 1, 1999 BY ORDINANCE NOS. 99-14 THROUGH 99-21  
AMENDED ON AUGUST 19, 1999 BY ORDINANCE NOS. 99-23  
AMENDED ON OCTOBER 7, 1999 BY ORDINANCE NO. 99-31  
AMENDED ON NOVEMBER 18, 1999 BY ORDINANCE NO. 99-32  
AMENDED ON DECEMBER 16, 1999 BY ORDINANCE NO. 99-35  
AMENDED ON JULY 6, 2000 BY ORDINANCE NOS. 2000-10 THROUGH 2000-12  
AMENDED ON DECEMBER 7, 2000 BY ORDINANCE NOS. 2000-20 THROUGH 2000-26  
AMENDED ON JULY 19, 2001 BY ORDINANCE NOS. 2001-10 AND 2001-11  
AMENDED ON DECEMBER 20, 2001 BY ORDINANCE NOS. 2001-17 THROUGH 2001-19  
AMENDED ON JANUARY 17, 2002 BY ORDINANCE NOS. 2001-16 AND 2002-01  
AMENDED ON MARCH 21, 2002 BY ORDINANCE NOS. 2002-6 THROUGH 2002-10 AND 2002-12  
AMENDED ON APRIL 4, 2002 BY ORDINANCE NO. 2002-11  
AMENDED ON AUGUST 15, 2002 BY ORDINANCE NOS. 2002-21 THROUGH 2002-23  
AMENDED ON JANUARY 16, 2003 BY ORDINANCE NOS. 2003-2 THROUGH 2003-4  
AMENDED ON MARCH 6, 2003 BY ORDINANCE NOS. 2003-7 THROUGH 2003-12  
AMENDED ON MARCH 20, 2003 BY ORDINANCE NO. 2003-13  
AMENDED ON OCTOBER 16, 2003 BY ORDINANCE NOS. 2003-24 THROUGH 2003-27  
AMENDED ON JANUARY 15, 2004 BY ORDINANCE NOS. 2004-1 THROUGH 2004-6  
AMENDED ON AUGUST 5, 2004 BY ORDINANCE NOS. 2004-20 THROUGH 2004-23  
AMENDED ON APRIL 21, 2005 BY ORDINANCE NOS. 2005-01 THROUGH 2005-04  
AMENDED ON AUGUST 18, 2005 BY ORDINANCE NO. 2005-15  
AMENDED ON SEPTEMBER 15, 2005 BY ORDINANCE NO. 2005-17  
AMENDED ON OCTOBER 6, 2005 BY ORDINANCE NO. 2005-18  
AMENDED ON DECEMBER 2, 2005 BY ORDINANCE NO. 2005-21  
AMENDED ON FEBRUARY 16, 2006 BY ORDINANCE NOS. 2006-02 AND 2006-03  
AMENDED ON APRIL 20, 2006 BY ORDINANCE NO. 2006-06  
AMENDED ON MAY 18, 2006 BY ORDINANCE NOS. 2006-10 THROUGH 2006-14  
AMENDED ON JULY 20, 2006 BY ORDINANCE NOS. 2006-29 THROUGH 2006-33

AMENDED ON MARCH 1, 2007 BY ORDINANCE NOS. 2007-55 THROUGH 2007-58  
AMENDED ON MARCH 15, 2007 BY ORDINANCE NOS. 2007-1 THROUGH 2007-3  
AMENDED ON APRIL 19, 2007 BY ORDINANCE NOS. 2007-6, 2007-7 AND 2007-9 THROUGH 2007-11  
AMENDED ON MAY 17, 2007 BY ORDINANCE NO. 2007-21  
AMENDED ON DECEMBER 26, 2007 BY ORDINANCE NOS. 2007-47 THROUGH 2007-49  
AMENDED ON MARCH 20, 2008 BY ORDINANCE NOS. 2008-6, 2008-7 AND 2008-9 THROUGH 2008-15  
AMENDED ON APRIL 17, 2008 BY ORDINANCE NOS. 2008-19 AND 2008-20  
AMENDED ON JULY 17, 2008 BY ORDINANCE NOS. 2008-32, 2008-33 AND 2008-35  
AMENDED ON SEPTEMBER 3, 2009 BY ORDINANCE NO. 2009-10  
AMENDED ON OCTOBER 15, 2009 BY ORDINANCE NOS. 2009-19 AND 2009-11  
AMENDED ON MARCH 18, 2010 BY ORDINANCE NO. 2010-5  
AMENDED ON JUNE 3, 2010 BY ORDINANCE NOS. 2010-17, 2007-20 AND 2008-39  
AMENDED ON AUGUST 18, 2011 BY ORDINANCE NOS. 2011-18 AND 2011-19  
AMENDED ON OCTOBER 20, 2011 BY ORDINANCE NOS. 2011-10 AND 2011-11  
AMENDED ON MARCH 1, 2012 BY ORDINANCE NO. 2011-12  
AMENDED ON AUGUST 16, 2012 BY ORDINANCE NO. 2012-9-A  
AMENDED ON OCTOBER 18, 2012 BY ORDINANCE NO. 2012-12  
AMENDED ON JUNE 5, 2014 BY ORDINANCE NO. 2013-11  
AMENDED ON FEBRUARY 20, 2014 BY ORDINANCE NO. 2014-1  
AMENDED ON AUGUST 7, 2014 BY ORDINANCE NO. 2014-6  
AMENDED ON MARCH 5, 2015 BY ORDINANCE NOS. 2014-9 AND 2014-10  
AMENDED ON JUNE 22, 2015 BY ORDINANCE NOS. 2015-3, 2015-4 AND 2015-14  
AMENDED ON SEPTEMBER 17, 2015 BY ORDINANCE NO. 2015-16  
AMENDED ON JULY 21, 2016 BY ORDINANCE NO. 2016-21  
AMENDED ON AUGUST 18, 2016 BY ORDINANCE NO. 2016-18  
AMENDED ON NOVEMBER 17, 2016 BY ORDINANCE NO. 2016-27  
AMENDED ON DECEMBER 15, 2016 BY ORDINANCE NO. 2016-29  
AMENDED ON APRIL 20, 2017 BY ORDINANCE NO. 2017-14  
AMENDED ON JULY 20, 2017 BY ORDINANCE NO. 2017-13  
AMENDED ON AUGUST 17, 2017 BY ORDINANCE NO. 2017-11  
AMENDED ON FEBRUARY 15, 2018 BY ORDINANCE NO. 2017-20 (DUDA EXPANSION)  
AMENDED ON APRIL 19, 2018 BY ORDINANCE NO. 2018-04  
AMENDED ON FEBRUARY 21, 2019 BY ORDINANCE NO. 2019-01 AND 2019-03  
AMENDED ON AUGUST 1, 2019 BY ORDINANCE NO. 2019-08  
AMENDED ON JANUARY 18, 2020 BY ORDINANCE NO. 2019-13  
AMENDED ON MAY 21, 2020 BY ORDINANCE NO. 2019-15  
AMENDED ON JUNE 18, 2020 BY ORDINANCE NO. 2020-05  
AMENDED ON AUGUST 20, 2020 BY ORDINANCE NO. 2020-10  
AMENDED ON NOVEMBER 19, 2020 BY ORDINANCE NO. 2020-21

Inset Map "B"



## FUTURE LAND USE PLAN MAP CLASSIFICATIONS

- Conservation
- Recreation
- Public
- Environmentally Sensitive Areas ( $\leq 1$  d.u. per 10 acres)
- Agriculture - 1 ( $\leq 1$  d.u. per 20 acres)
- Agriculture - 2 ( $\leq 1$  d.u. per 10 acres)
- Agriculture - 3 ( $\leq 1$  d.u. per 5 acres)
- Residential Very Low Density ( $\leq 1$  d.u. per acre)
- Residential Low Density ( $\leq 2$  d.u. per acre)
- Residential Moderate Density ( $\leq 4$  d.u. per acre)
- Residential Medium Density ( $\leq 8$  d.u. per acre)
- Residential Medium/High Density ( $\leq 14$  d.u. per acre)
- Residential High Density ( $\leq 20$  d.u. per acre)
- Commercial
- Highway Interchange
- Industrial
- Light Industrial
- Mixed Use Development

## OTHER MAP FEATURES

- County Boundary Line
- Designated Urban Development Area
- Lake
- River or Stream
- Railroad
- Interstate Highway
- U.S. Highway
- State Highway
- County Road

R 15 E

R 16 E

R 17 E

R 18 E

R 19 E

GEORGIA

HAMILTON COUNTY

Suwannee River

BAKER COUNTY

SUWANNEE COUNTY

Okeefe Creek

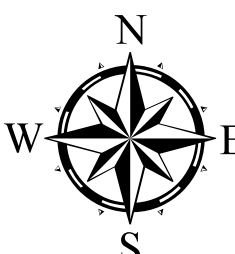
ALACHUA COUNTY

Santa Fe River

GILCHRIST COUNTY

The Future Land Use Plan Map Classification for the Rogers/Feagle property, Application No. CPA 0168, once the property is served by central sewer service at the County's adopted level of service standards, the maximum development potential for the entire amendment site shall be 20,000 square feet of building area if a septic tank for that amount of development can be permitted by the Florida Department of Health.

Note: Please refer to amendment ordinances for legal description of properties 10 acres or less in size and the corresponding land use classifications for these properties.



Miles  
1.5 1.0 0.5 0 1.5 3