



Serving
Alachua • Bradford
Columbia • Dixie • Gilchrist
Hamilton • Lafayette • Levy • Madison
Marion • Suwannee • Taylor • Union Counties

2009 NW 67th Place, Gainesville, FL 32653-1603 • 352.955.2200

MEETING NOTICE

REGIONAL PLANNING COMMITTEE

There will be a meeting of the Regional Planning Committee of the North Central Florida Regional Planning Council on **April 28, 2016**. The meeting will be held at the **Holiday Inn Hotel & Suites, 213 SW Commerce Boulevard, Lake City**, beginning at **6:30 p.m.**

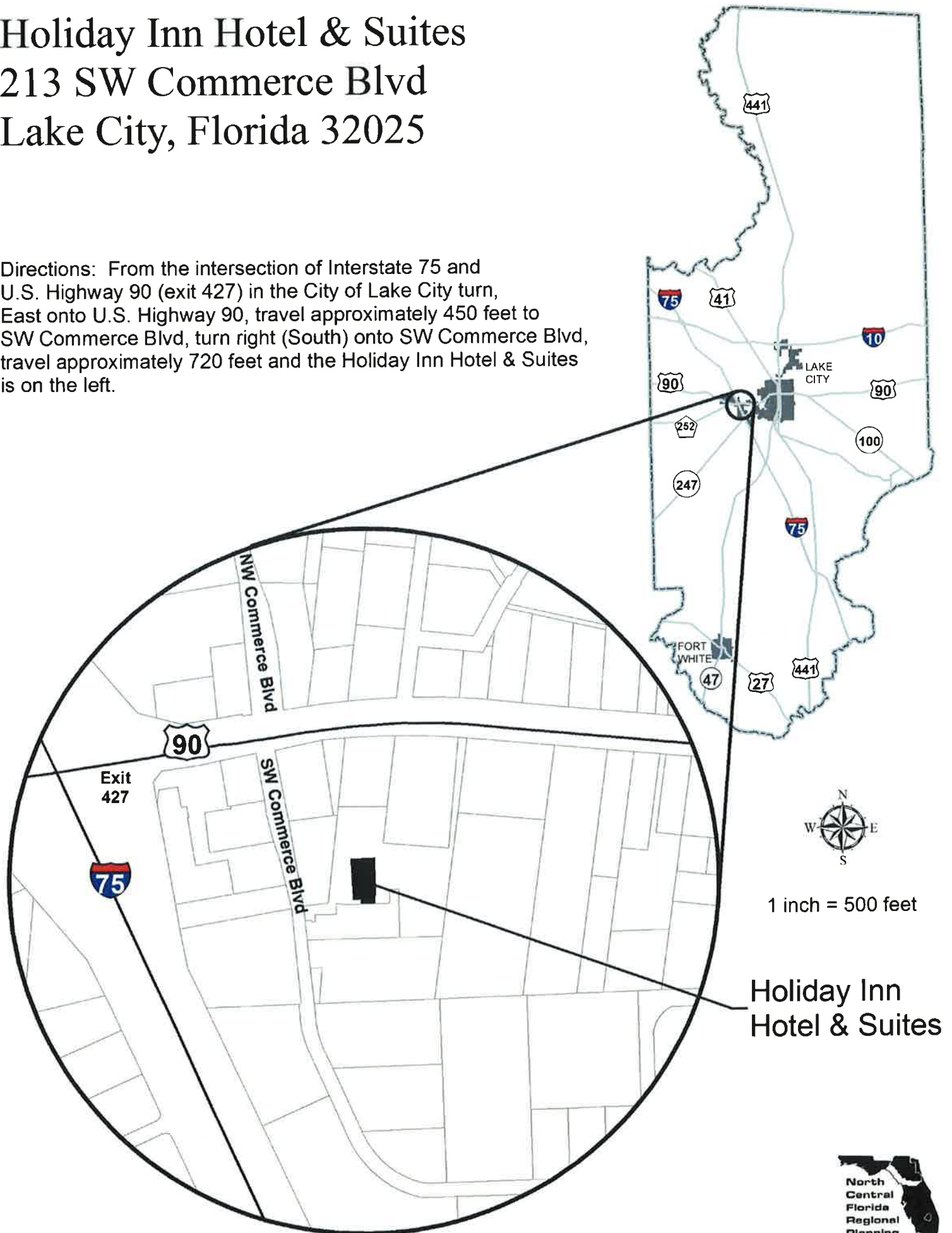
(Location Map on Back)

Holiday Inn Hotel & Suites

213 SW Commerce Blvd

Lake City, Florida 32025

Directions: From the intersection of Interstate 75 and U.S. Highway 90 (exit 427) in the City of Lake City turn East onto U.S. Highway 90, travel approximately 450 feet to SW Commerce Blvd, turn right (South) onto SW Commerce Blvd, travel approximately 720 feet and the Holiday Inn Hotel & Suites is on the left.





Serving
Alachua • Bradford
Columbia • Dixie • Gilchrist
Hamilton • Lafayette • Levy • Madison
Marion • Suwannee • Taylor • Union Counties

2009 NW 67th Place, Gainesville, FL 32653-1603 • 352.955.2200

AGENDA

REGIONAL PLANNING COMMITTEE

Holiday Inn Hotel & Suites
Lake City, Florida

April 28, 2016
6:30 p.m.

	<u>PAGE NO.</u>
I. APPROVAL OF THE MARCH 24, 2016 MEETING MINUTES	5
II. REVIEW OF PROPOSED AMENDMENTS TO THE NATURAL RESOURCES OF REGIONAL SIGNIFICANCE ELEMENT OF THE NORTH CENTRAL FLORIDA STRATEGIC REGIONAL POLICY PLAN	7

NORTH CENTRAL FLORIDA REGIONAL PLANNING COUNCIL

REGIONAL PLANNING COMMITTEE

MINUTES

Holiday Inn Hotel & Suites
Lake City, Florida

March 24, 2016
6:30 p.m.

MEMBERS PRESENT

Beth Burnam, Chair
Charles Chestnut, IV
William Hunter
James Montgomery
Deloris Roberts
Robert Wilford

MEMBERS ABSENT

Scarlet Frisina
Mike Williams
Stephen Witt

STAFF PRESENT

Steven Dopp
Dwayne Mundy

The meeting was called to order by Chair Burnam at 6:35 p.m.

I. APPROVAL OF THE FEBRUARY 25, 2016 MEETING MINUTES

ACTION: It was moved by Mr. Montgomery and seconded by Commissioner Roberts to approve the February 25, 2016 Committee minutes as circulated. The motion carried unanimously.

II. EMERGENCY PREPAREDNESS ELEMENT

Dwayne Mundy, Public Safety and Regulatory Compliance Programs Director for the Council, presented proposed amendments to the Emergency Preparedness Element of the North Central Florida Strategic Regional Policy Plan. The Committee reviewed and discussed the proposed amendments.

The meeting adjourned at 7:05 p.m.

Beth Burnam, Chair

4/28/16
Date

NATURAL RESOURCES OF REGIONAL SIGNIFICANCE MAPS

ILLUSTRATION III-A
 REGIONALLY SIGNIFICANT NATURAL RESOURCES
 COASTAL AND MARINE RESOURCES
 NORTH CENTRAL FLORIDA REGIONAL PLANNING DISTRICT

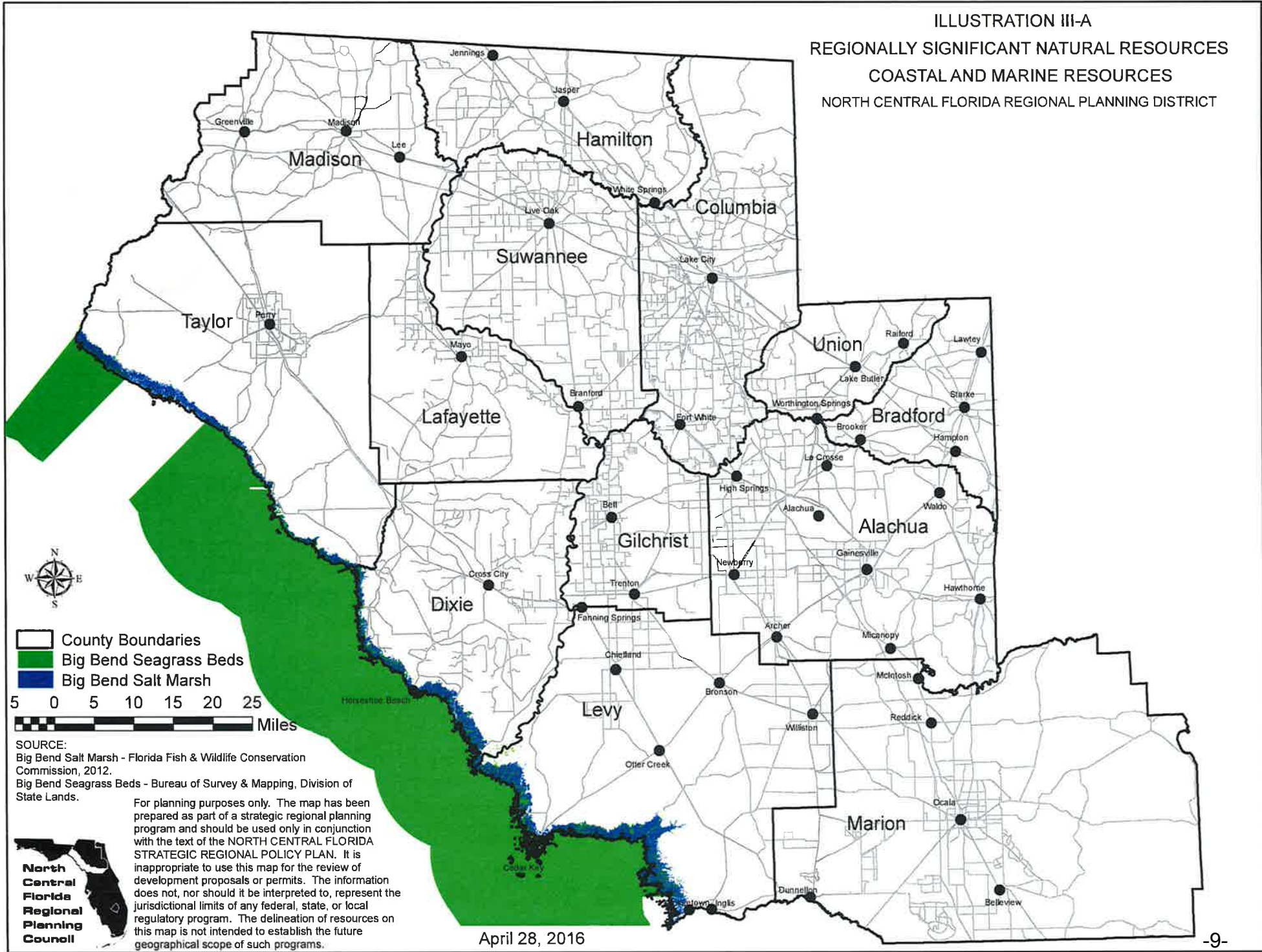
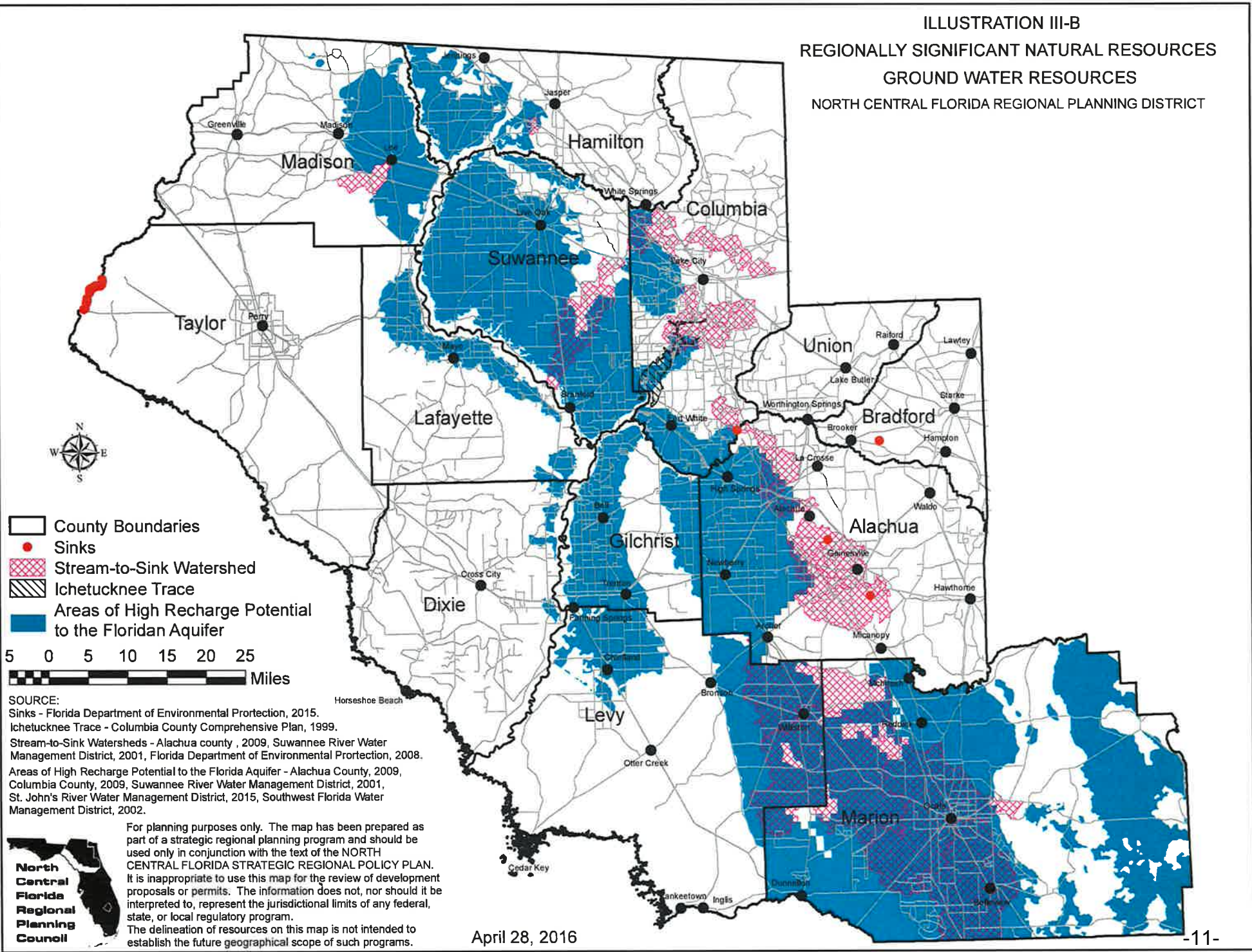


ILLUSTRATION III-B
 REGIONALLY SIGNIFICANT NATURAL RESOURCES
 GROUND WATER RESOURCES
 NORTH CENTRAL FLORIDA REGIONAL PLANNING DISTRICT

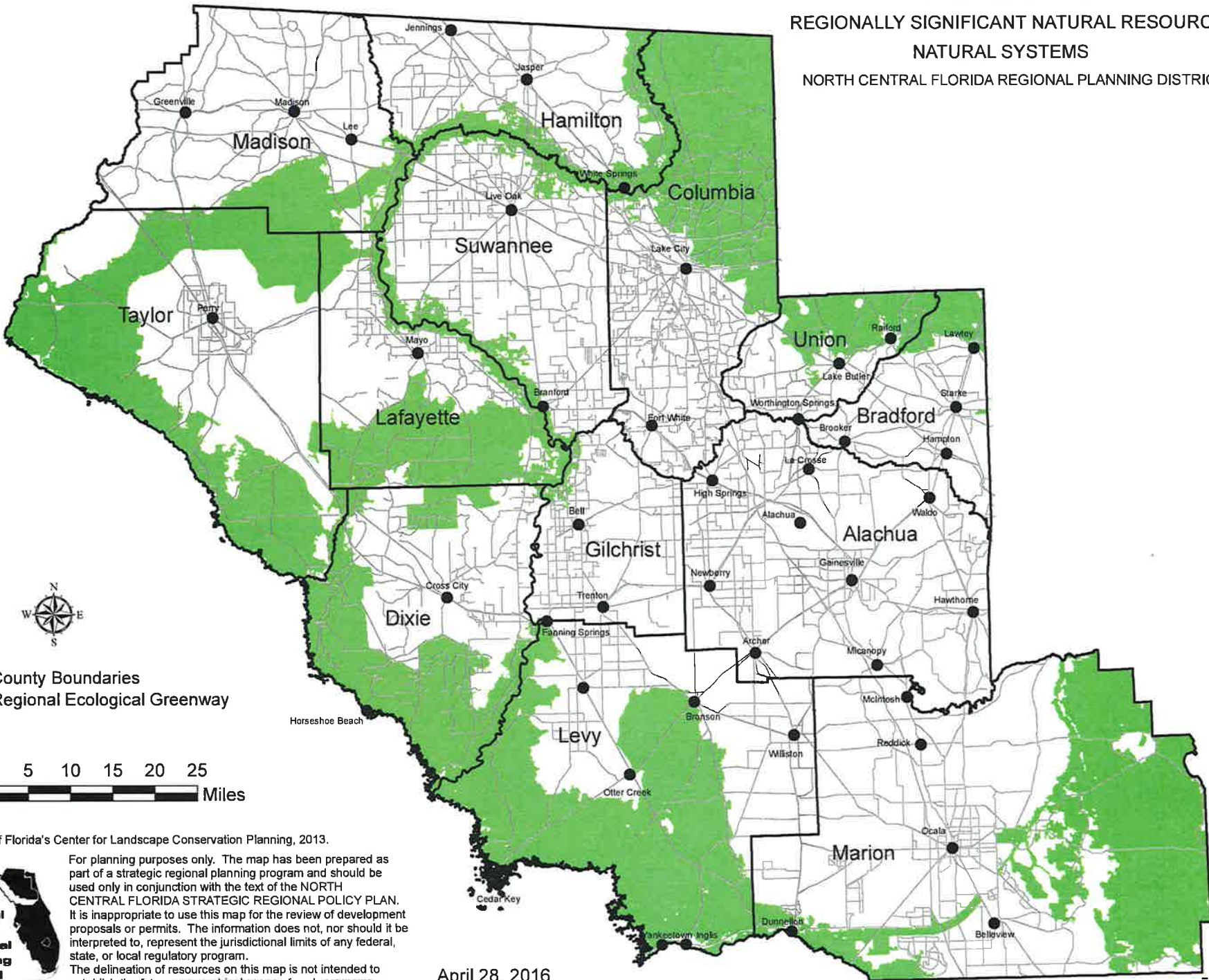


For planning purposes only. The map has been prepared as part of a strategic regional planning program and should be used only in conjunction with the text of the NORTH CENTRAL FLORIDA STRATEGIC REGIONAL POLICY PLAN. It is inappropriate to use this map for the review of development proposals or permits. The information does not, nor should it be interpreted to, represent the jurisdictional limits of any federal, state, or local regulatory program. The delineation of resources on this map is not intended to establish the future geographical scope of such programs.

April 28, 2016



ILLUSTRATION III-C
 REGIONALLY SIGNIFICANT NATURAL RESOURCES
 NATURAL SYSTEMS
 NORTH CENTRAL FLORIDA REGIONAL PLANNING DISTRICT



County Boundaries
 Regional Ecological Greenway



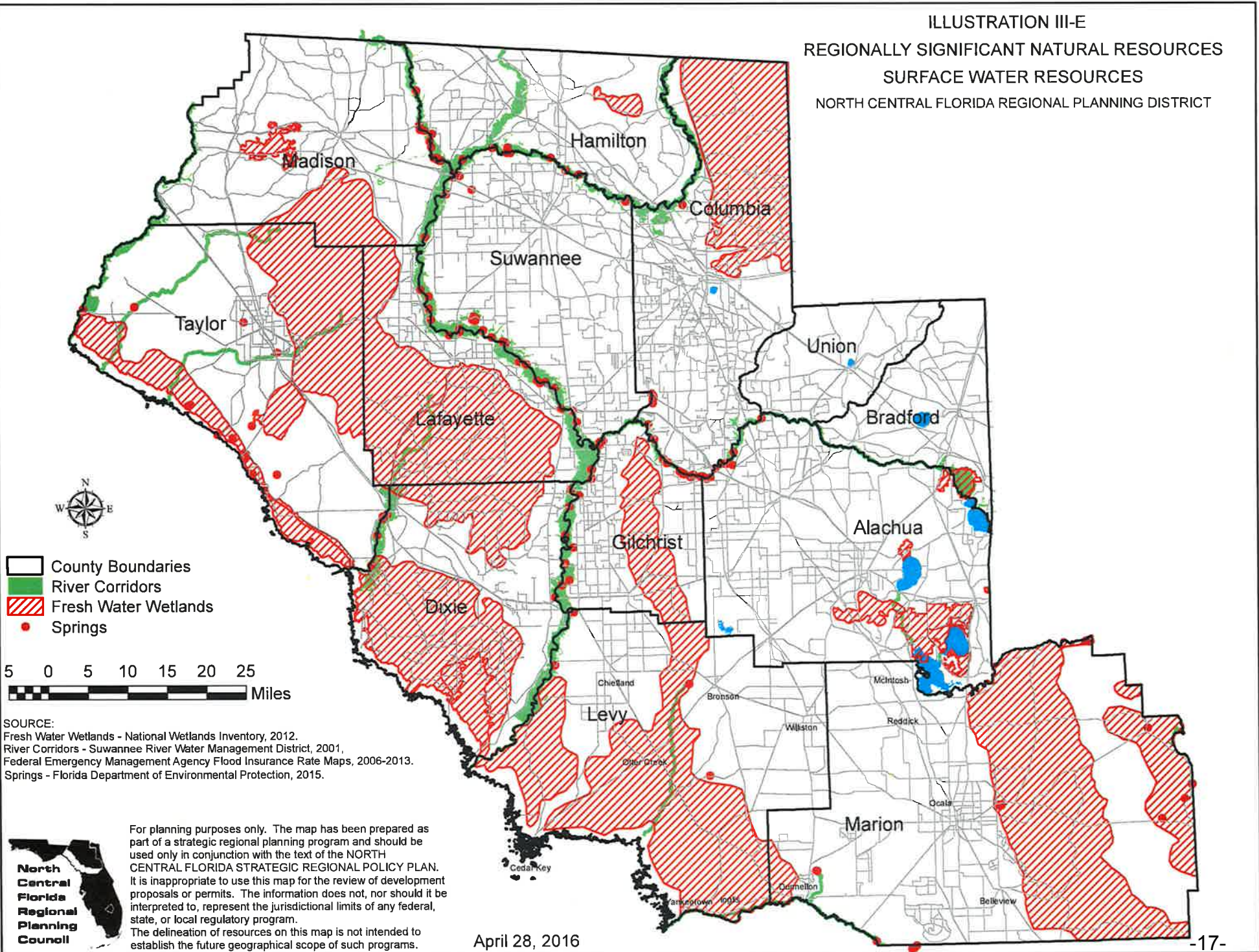
SOURCE:
 University of Florida's Center for Landscape Conservation Planning, 2013.



For planning purposes only. The map has been prepared as part of a strategic regional planning program and should be used only in conjunction with the text of the NORTH CENTRAL FLORIDA STRATEGIC REGIONAL POLICY PLAN. It is inappropriate to use this map for the review of development proposals or permits. The information does not, nor should it be interpreted to, represent the jurisdictional limits of any federal, state, or local regulatory program. The delineation of resources on this map is not intended to establish the future geographical scope of such programs.

April 28, 2016

ILLUSTRATION III-E
 REGIONALLY SIGNIFICANT NATURAL RESOURCES
 SURFACE WATER RESOURCES
 NORTH CENTRAL FLORIDA REGIONAL PLANNING DISTRICT



- County Boundaries
- River Corridors
- Fresh Water Wetlands
- Springs



SOURCE:
 Fresh Water Wetlands - National Wetlands Inventory, 2012.
 River Corridors - Suwannee River Water Management District, 2001,
 Federal Emergency Management Agency Flood Insurance Rate Maps, 2006-2013.
 Springs - Florida Department of Environmental Protection, 2015.



For planning purposes only. The map has been prepared as part of a strategic regional planning program and should be used only in conjunction with the text of the NORTH CENTRAL FLORIDA STRATEGIC REGIONAL POLICY PLAN. It is inappropriate to use this map for the review of development proposals or permits. The information does not, nor should it be interpreted to, represent the jurisdictional limits of any federal, state, or local regulatory program. The delineation of resources on this map is not intended to establish the future geographical scope of such programs.

April 28, 2016

REGIONALLY SIGNIFICANT NATURAL RESOURCES
 PLANNING AND RESOURCE MANAGEMENT AREAS 2
 NORTH CENTRAL FLORIDA REGIONAL PLANNING DISTRICT

