

# Union County

Official Zoning Atlas

R17E

R18E

R19E

R20E

R21E

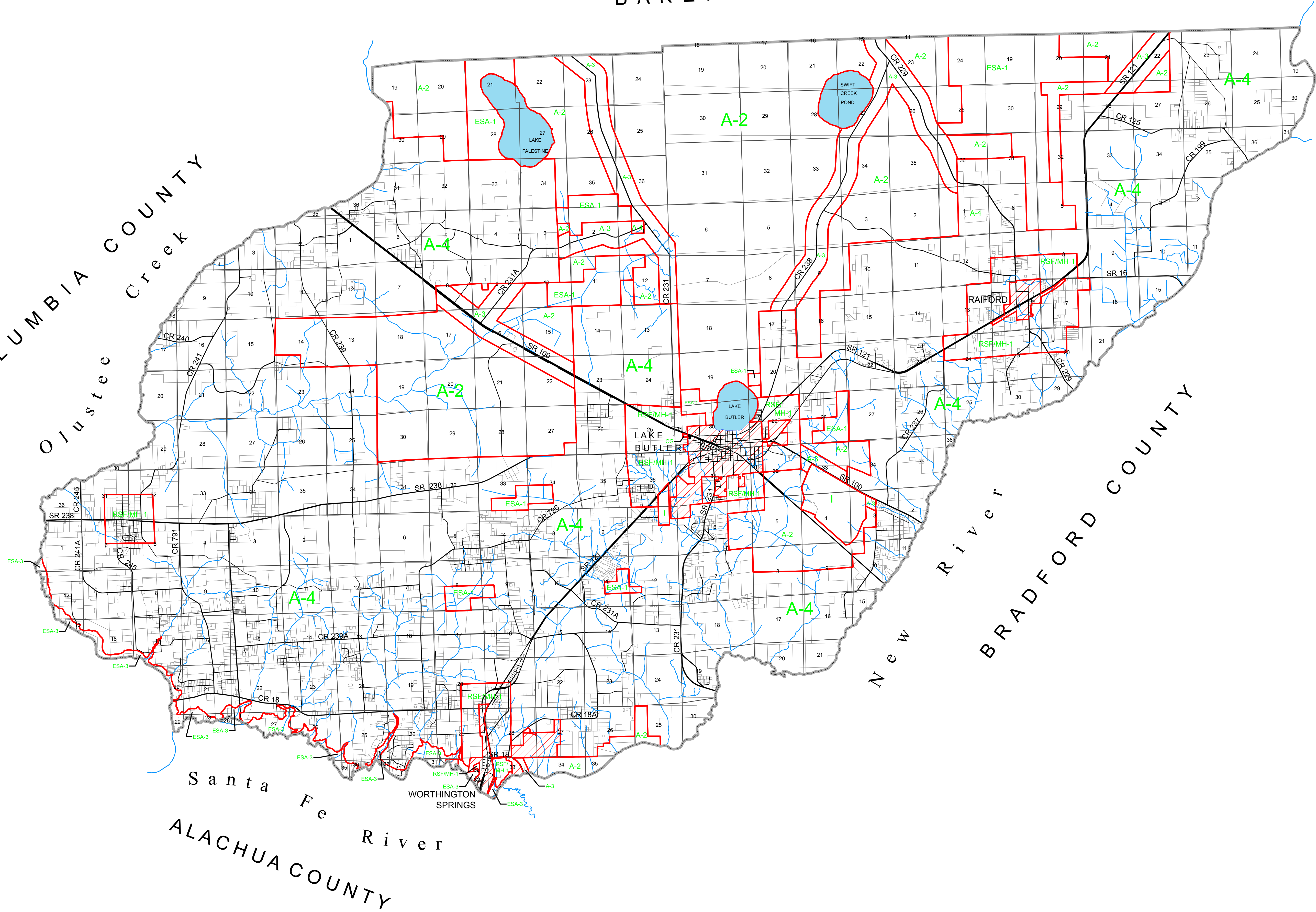
T4S

T5S

T6S

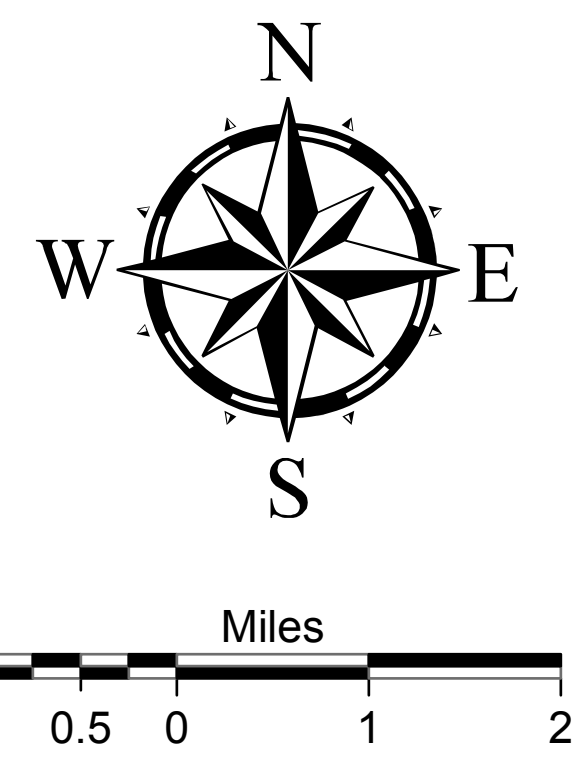
BAKER COUNTY

COLUMBIA COUNTY  
Olustea Creek



Santa Fe River  
ALACHUA COUNTY  
WORTHINGTON SPRINGS

New River  
BRADFORD COUNTY



ZONING DISTRICTS

CSV	CONSERVATION
ESA-1,2,3	ENVIRONMENTALLY SENSITIVE AREAS
A-1,2,3,4	AGRICULTURAL
RR	RURAL RESIDENTIAL
RSF-1,2,3	RESIDENTIAL, (CONVENTIONAL) SINGLE FAMILY
RSF/MH-1,2,3	RESIDENTIAL, (MIXED) SINGLE FAMILY/MOBILE HOME
RMH-1,2,3	RESIDENTIAL, MOBILE HOME
RMH-P	RESIDENTIAL, MOBILE HOME PARK
RMF-1,2	RESIDENTIAL, MULTIPLE FAMILY
CN	COMMERCIAL, NEIGHBORHOOD
CG	COMMERCIAL, GENERAL
CI	COMMERCIAL, INTENSIVE
ILW	INDUSTRIAL, LIGHT AND WAREHOUSING
I	INDUSTRIAL
PRD	PLANNED RESIDENTIAL DEVELOPMENT
PRRD	PLANNED RURAL RESIDENTIAL DEVELOPMENT

NOTE: Zoning districts of 10 acres or less in size are not shown on the Official Zoning Atlas due to the scale of the atlas. Please refer to Appendix "B" of the County's Land Development Regulations for legal descriptions of properties and corresponding zoning district designations for zoning districts of 10 acres or less in size.

ADOPTED BY ORDINANCE NO. 95-04 ON JULY 31, 1995  
 AMENDED BY ORDINANCE NO. 95-05 ON JANUARY 22, 1996  
 AMENDED BY ORDINANCE NO. 96-03 ON MARCH 22, 1996  
 AMENDED BY ORDINANCE NO. 96-08 ON MAY 16, 1996  
 AMENDED BY ORDINANCE NO. 96-14 ON AUGUST 19, 1996  
 AMENDED BY ORDINANCE NO. 97-02 ON MARCH 3, 1997  
 AMENDED BY ORDINANCE NO. 97-05 ON MARCH 19, 1997  
 AMENDED BY ORDINANCE NO. 09-04 ON AUGUST 17, 2009  
 AMENDED BY ORDINANCE NO. 14-003 ON JUNE 26, 2014

- Legend**
- Zoning Boundary
  - County Boundary Line
  - Incorporated Area
  - Lake
  - River or Stream

