

R11E

R12E

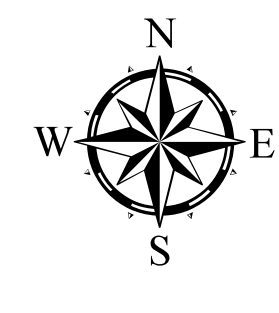
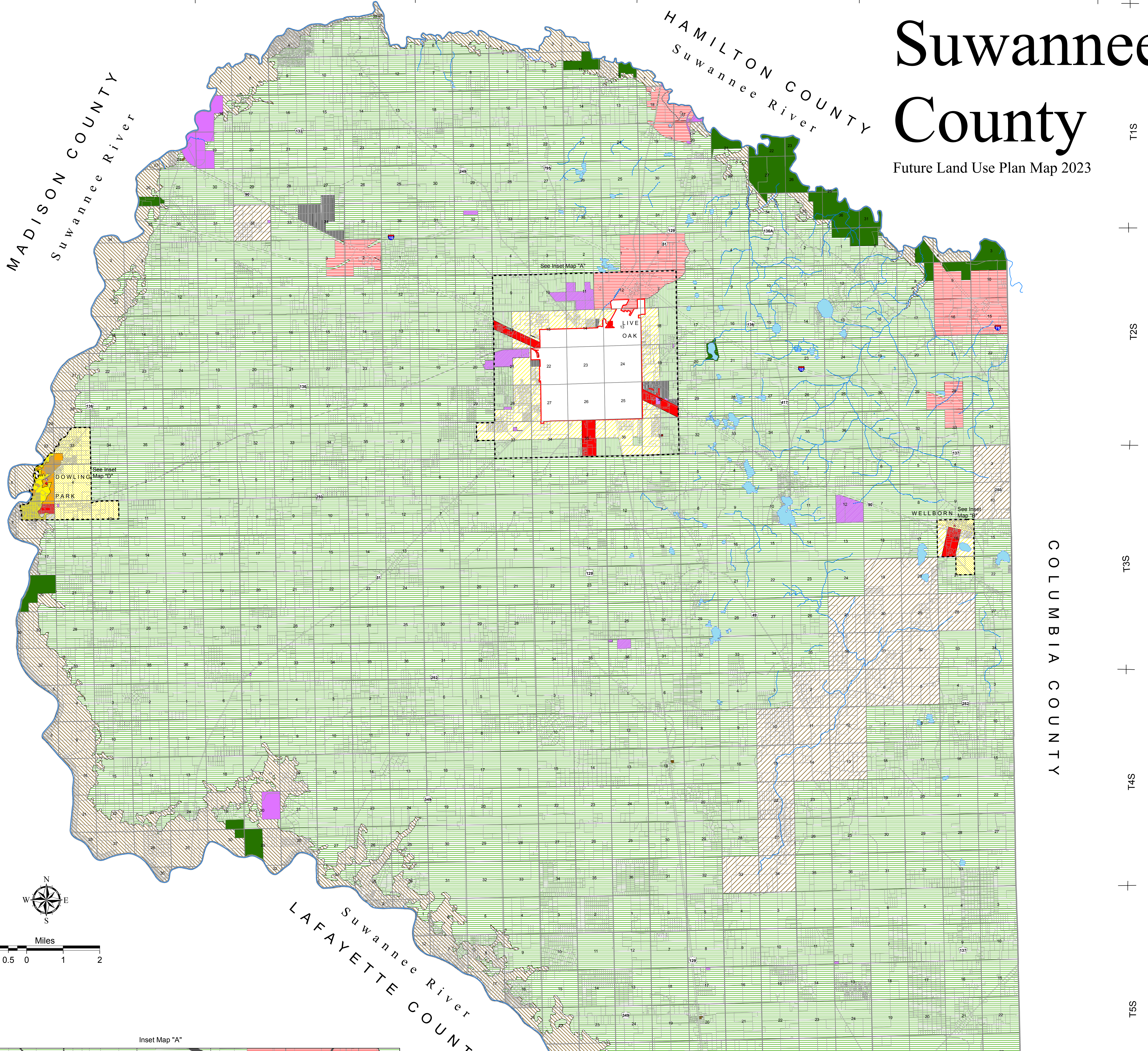
R13E

R14E

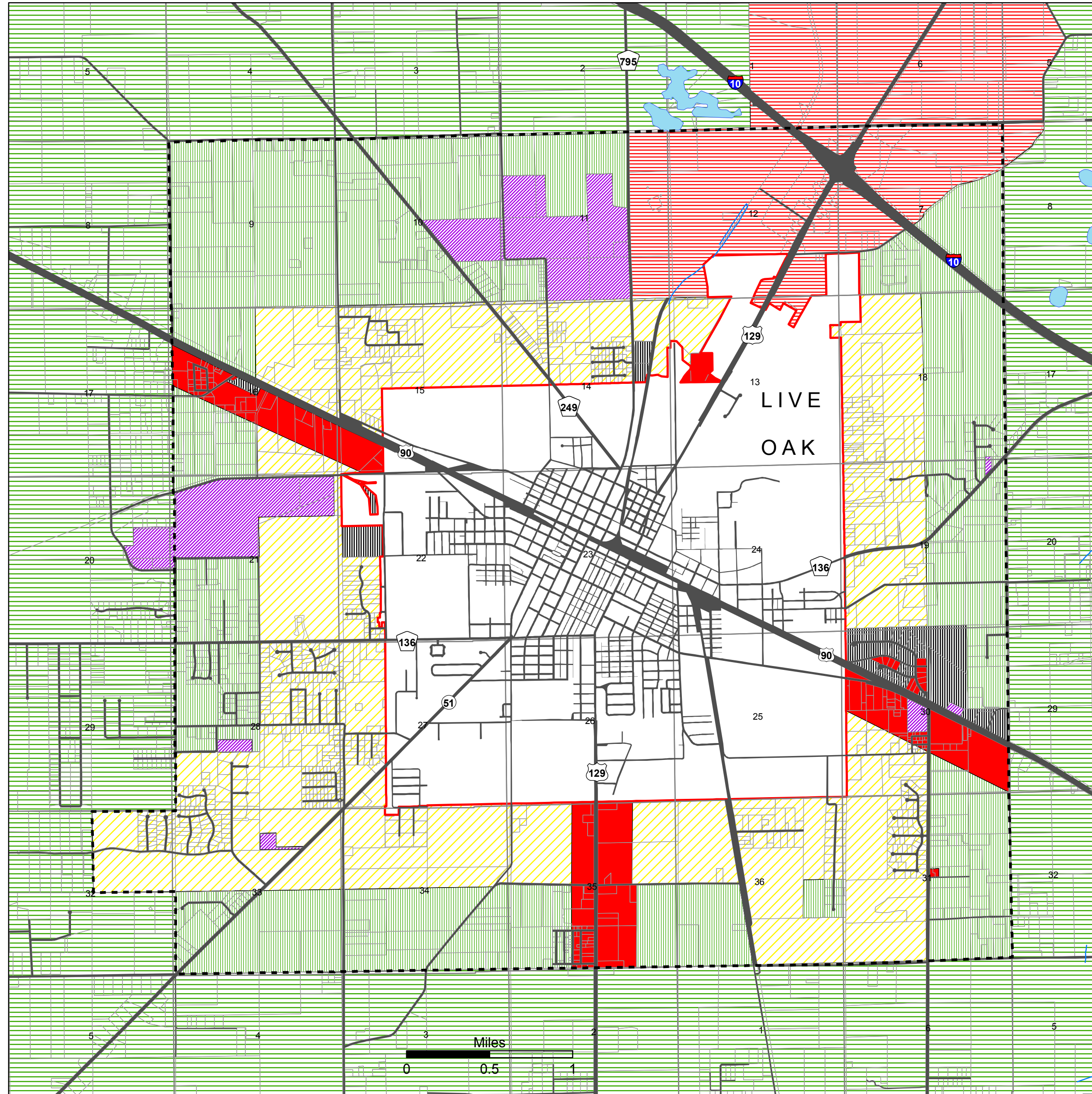
R15E

Suwannee County

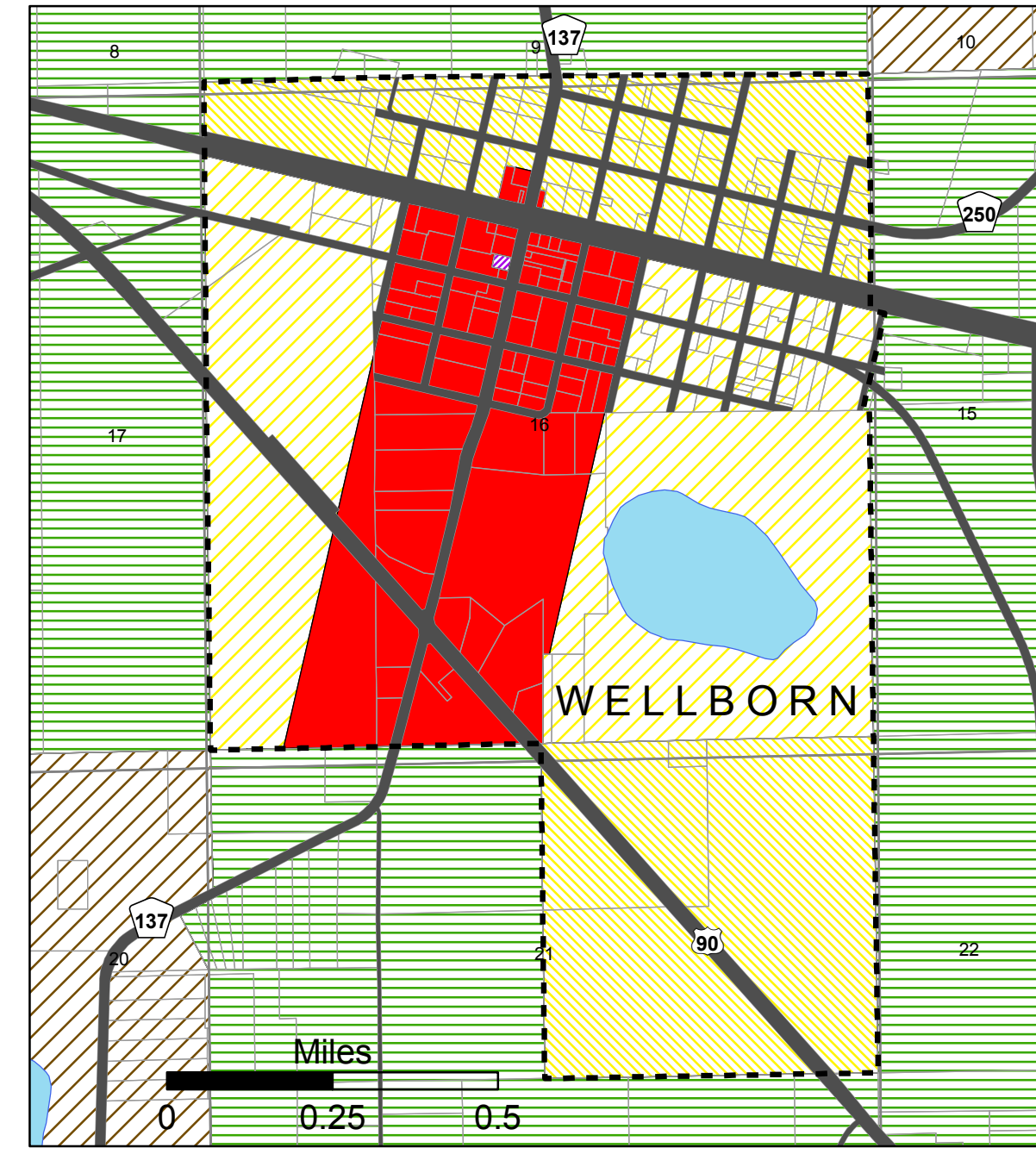
Future Land Use Plan Map 2023



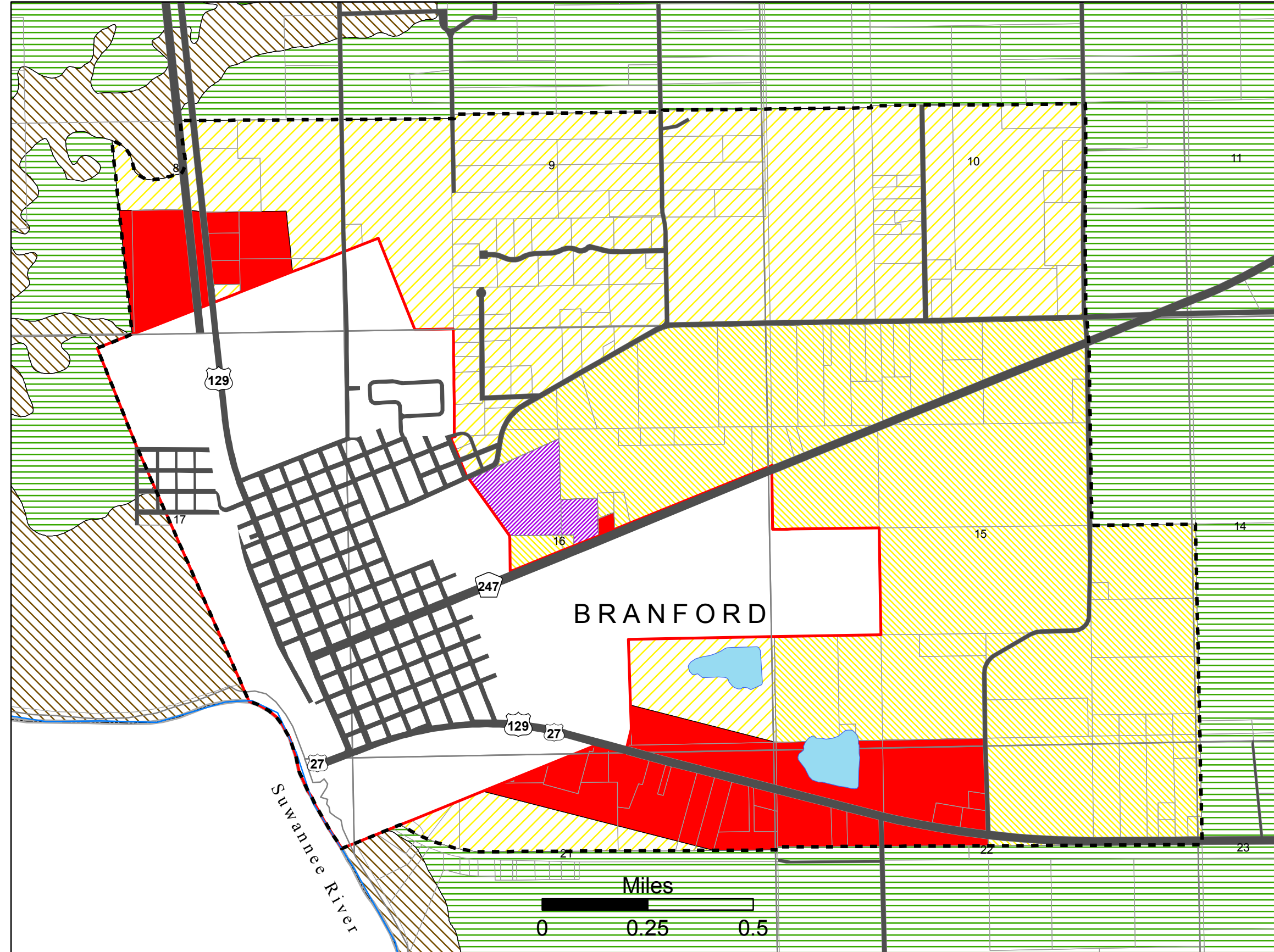
Inset Map "A"



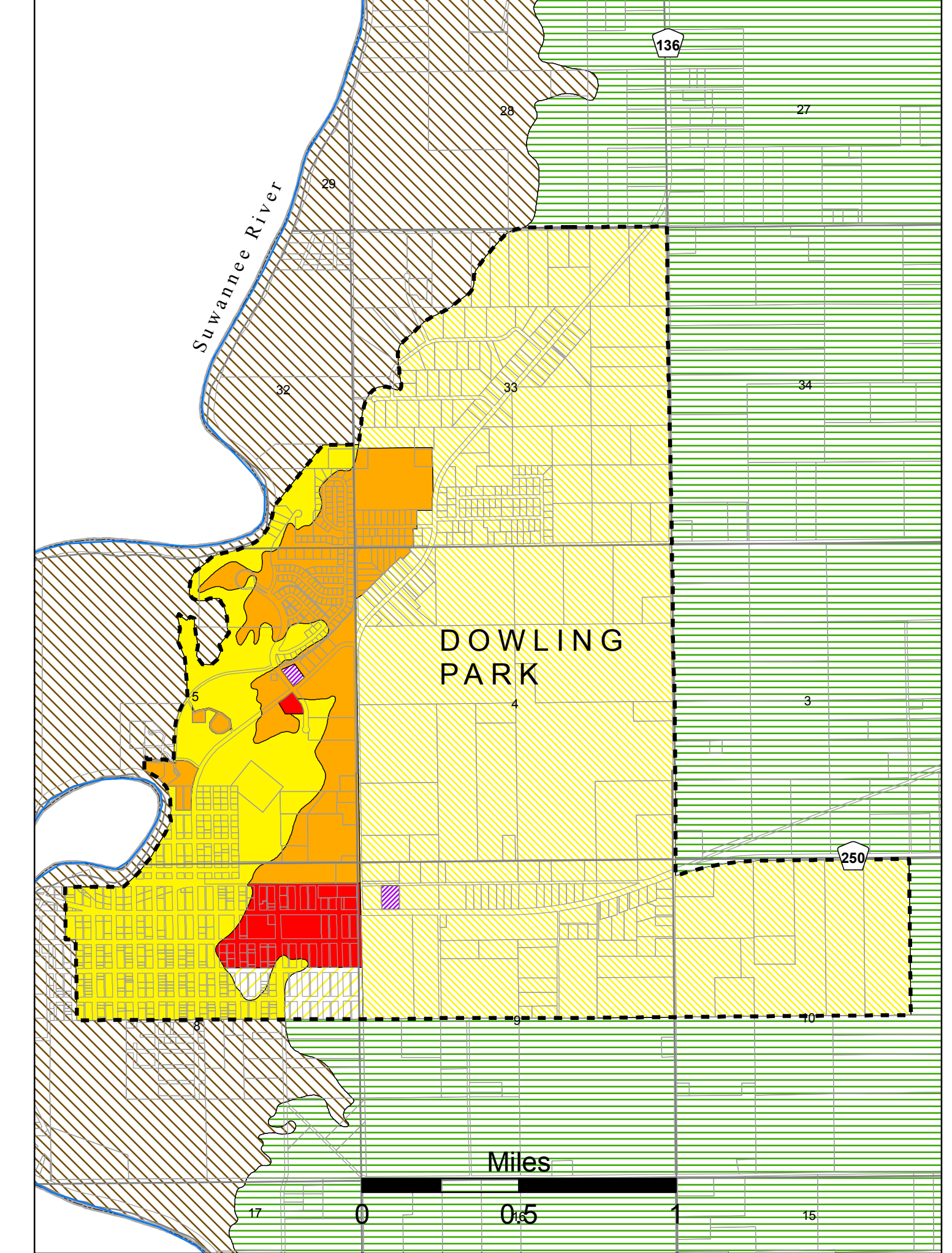
Inset Map "B"



Inset Map "C"



Inset Map "D"



FUTURE LAND USE PLAN MAP CLASSIFICATIONS

- Conservation
- Recreation
- Public
- Environmentally Sensitive Areas - 1 (≤ 1 d.u. per 20 acres)
- Environmentally Sensitive Areas - 2 (≤ 1 d.u. per 10 acres)
- Agriculture - 1 (≤ 1 d.u. per 5 acres)
- Agriculture - 2 (≤ 1 d.u. per 2 acres)
- Residential - 1 (≤ 1 d.u. per acre)
- Residential - 2 (≤ 2 d.u. per acre)
- Residential - 3 (≤ 4 d.u. per acre) none
- Residential - 4 (≤ 8 d.u. per acre)
- Residential - 5 (≤ 20 d.u. per acre)
- Commercial
- Highway Interchange
- Employment Center
- Industrial
- Rural Activity Center

OTHER MAP FEATURES

- County Boundary Line
- Incorporated Area
- Designated Urban Development Area
- Lake
- River or Stream
- Interstate Highway
- U.S. Highway
- State Highway
- County Road

ADOPTED ON SEPTEMBER 9, 1991 BY ORDINANCE NO. 91-15
 AMENDED ON JUNE 9, 1994 BY ORDINANCE NO. 94-02
 AMENDED ON SEPTEMBER 6, 1994 BY ORDINANCE NO. 94-05
 AMENDED ON SEPTEMBER 6, 1994 BY ORDINANCE NO. 94-06
 AMENDED ON SEPTEMBER 6, 1994 BY ORDINANCE NO. 94-07
 AMENDED ON SEPTEMBER 6, 1994 BY ORDINANCE NO. 94-09
 AMENDED ON SEPTEMBER 6, 1994 BY ORDINANCE NO. 94-10
 AMENDED ON SEPTEMBER 6, 1994 BY ORDINANCE NO. 94-11
 AMENDED ON SEPTEMBER 6, 1994 BY ORDINANCE NO. 94-12
 AMENDED ON SEPTEMBER 6, 1994 BY ORDINANCE NO. 94-13
 AMENDED ON JULY 18, 1995 BY ORDINANCE NO. 95-07
 AMENDED ON JULY 18, 1995 BY ORDINANCE NO. 95-08
 AMENDED ON JULY 18, 1995 BY ORDINANCE NO. 95-09
 AMENDED ON DECEMBER 5, 1995 BY ORDINANCE NO. 95-14
 AMENDED ON MAY 7, 1996 BY ORDINANCE NO. 96-05
 AMENDED ON JUNE 4, 1996 BY ORDINANCE NO. 96-08
 AMENDED ON NOVEMBER 5, 1996 BY ORDINANCE NO. 97-02
 AMENDED ON FEBRUARY 4, 1997 BY ORDINANCE NOS. 97-09 AND 97-11
 AMENDED ON DECEMBER 16, 1997 BY ORDINANCE NO. 98-02
 AMENDED ON APRIL 21, 1998 BY ORDINANCE NO. 98-07
 AMENDED ON MAY 7, 1998 BY ORDINANCE NO. 98-09
 AMENDED ON AUGUST 18, 1998 BY ORDINANCE NO. 98-14
 AMENDED ON JULY 20, 1999 BY ORDINANCE NO. 99-09
 AMENDED ON AUGUST 17, 1999 BY ORDINANCE NOS. 99-12 AND 99-13
 AMENDED ON NOVEMBER 14, 2000 BY ORDINANCE NO. 01-03
 AMENDED ON MARCH 13, 2001 BY ORDINANCE NO. 01-05
 AMENDED ON APRIL 10, 2001 BY ORDINANCE NO. 01-07
 AMENDED ON JULY 10, 2001 BY ORDINANCE NO. 01-10
 AMENDED ON JUNE 18, 2002 BY ORDINANCE NO. 02-16
 AMENDED ON NOVEMBER 21, 2008 BY ORDINANCE NO. 07-13
 AMENDED ON DECEMBER 18, 2007 BY ORDINANCE NO. 08-04
 AMENDED ON MARCH 18, 2008 BY ORDINANCE NO. 08-08
 AMENDED ON AUGUST 18, 2008 BY ORDINANCE NO. 12-01
 AMENDED ON OCTOBER 21, 2008 BY ORDINANCE NO. 09-01
 AMENDED ON APRIL 21, 2009 BY ORDINANCE NO. 09-05
 AMENDED ON DECEMBER 1, 2009 BY ORDINANCE NO. 10-04
 AMENDED ON MAY 18, 2010 BY ORDINANCE NO. 10-08
 AMENDED ON JANUARY 3, 2012 BY ORDINANCE NO. 12-05
 AMENDED ON JULY 3, 2012 BY ORDINANCE NO. 12-11
 AMENDED ON MARCH 19, 2013 BY ORDINANCE NOS. 13-05
 AMENDED ON OCTOBER 15, 2013 BY ORDINANCE NO. 14-01
 AMENDED ON JULY 1, 2014 BY ORDINANCE NO. 14-04
 AMENDED ON AUGUST 19, 2015 BY ORDINANCE NOS. 2015-03, 2015-04, 2015-05 AND 2015-06
 AMENDED ON OCTOBER 6, 2015 BY ORDINANCE NOS. 2016-02, 2016-03, 2016-04 AND 2016-07
 AMENDED ON MARCH 1, 2016 BY ORDINANCE NOS. 2016-08 AND 2016-09

Note: Please refer to amendment ordinances for legal description of properties 10 acres or less in size and the corresponding land use classifications for these properties.

