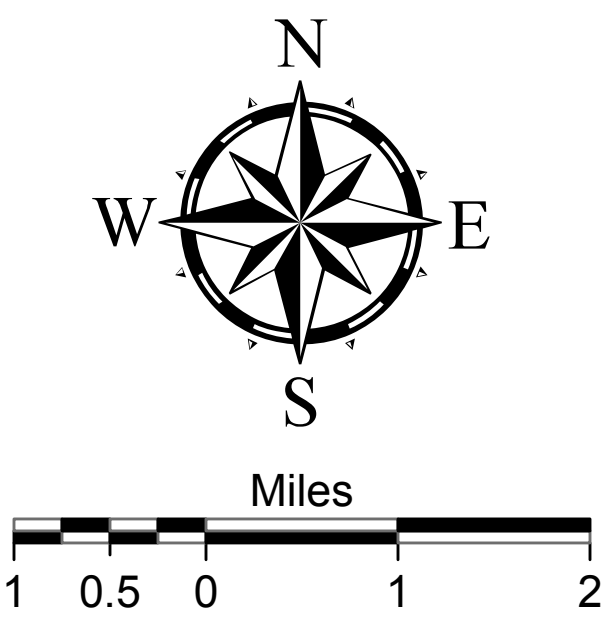


Dixie County

Official Zoning Atlas



Taylor County
Steinhatchee River

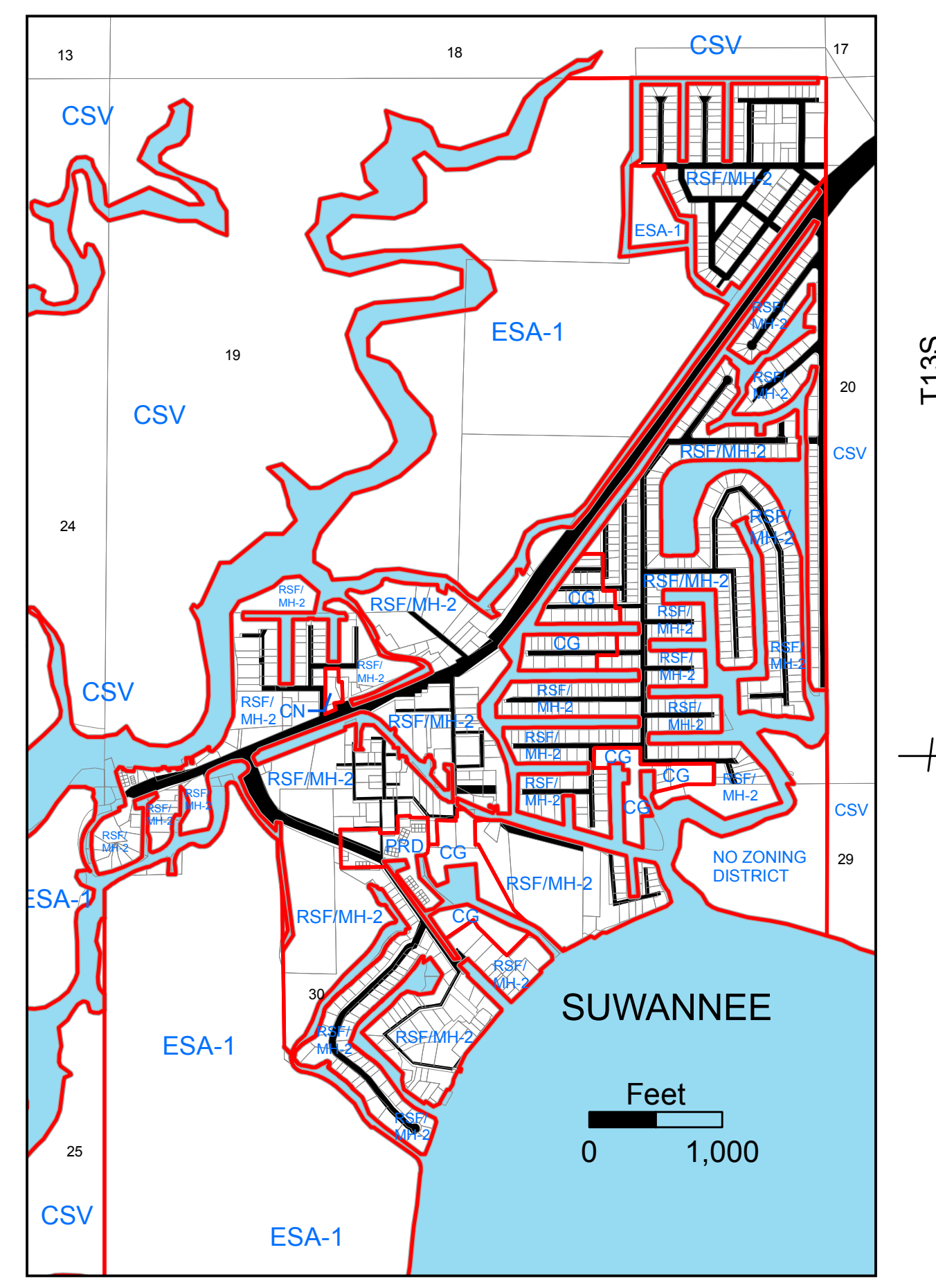
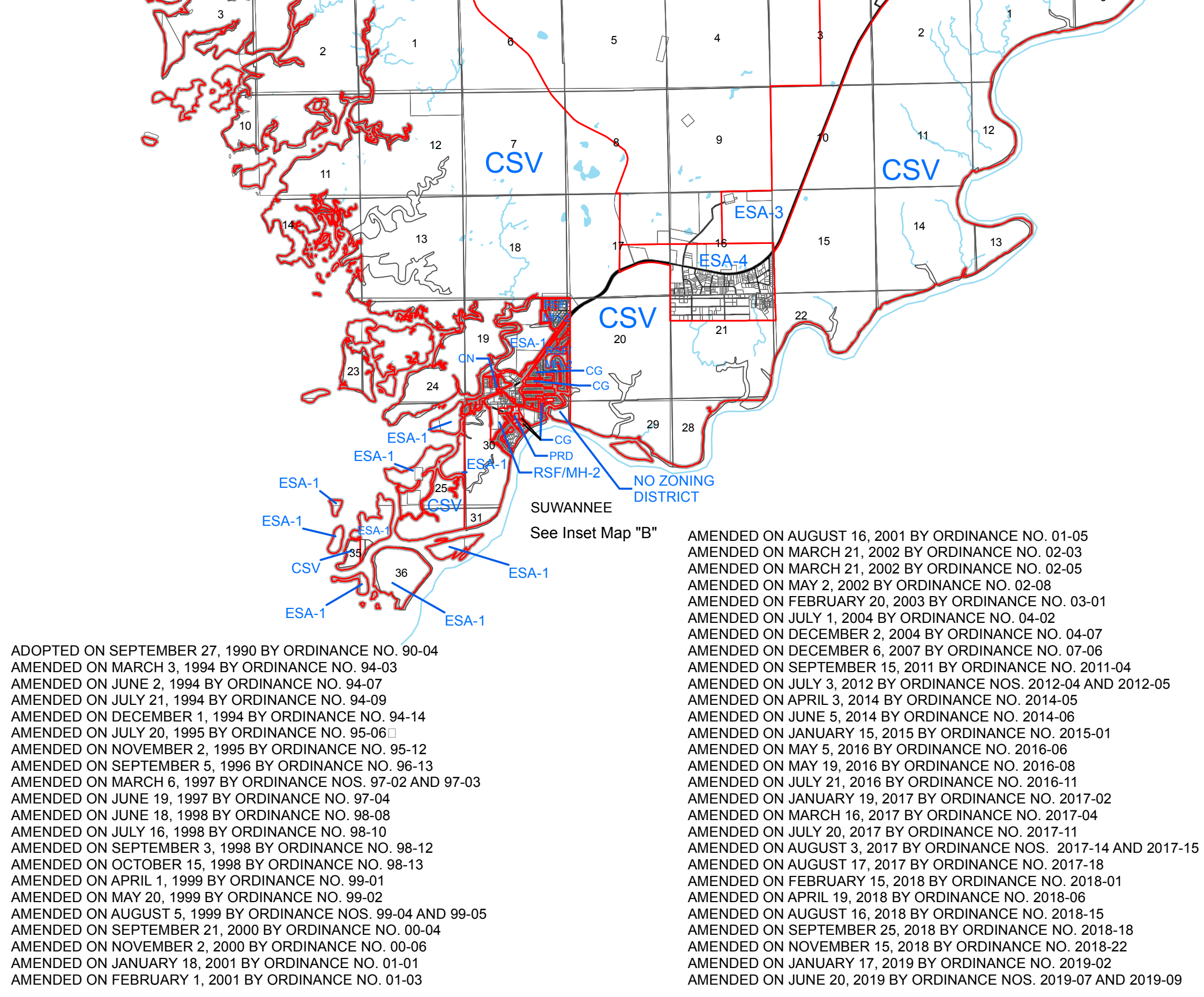
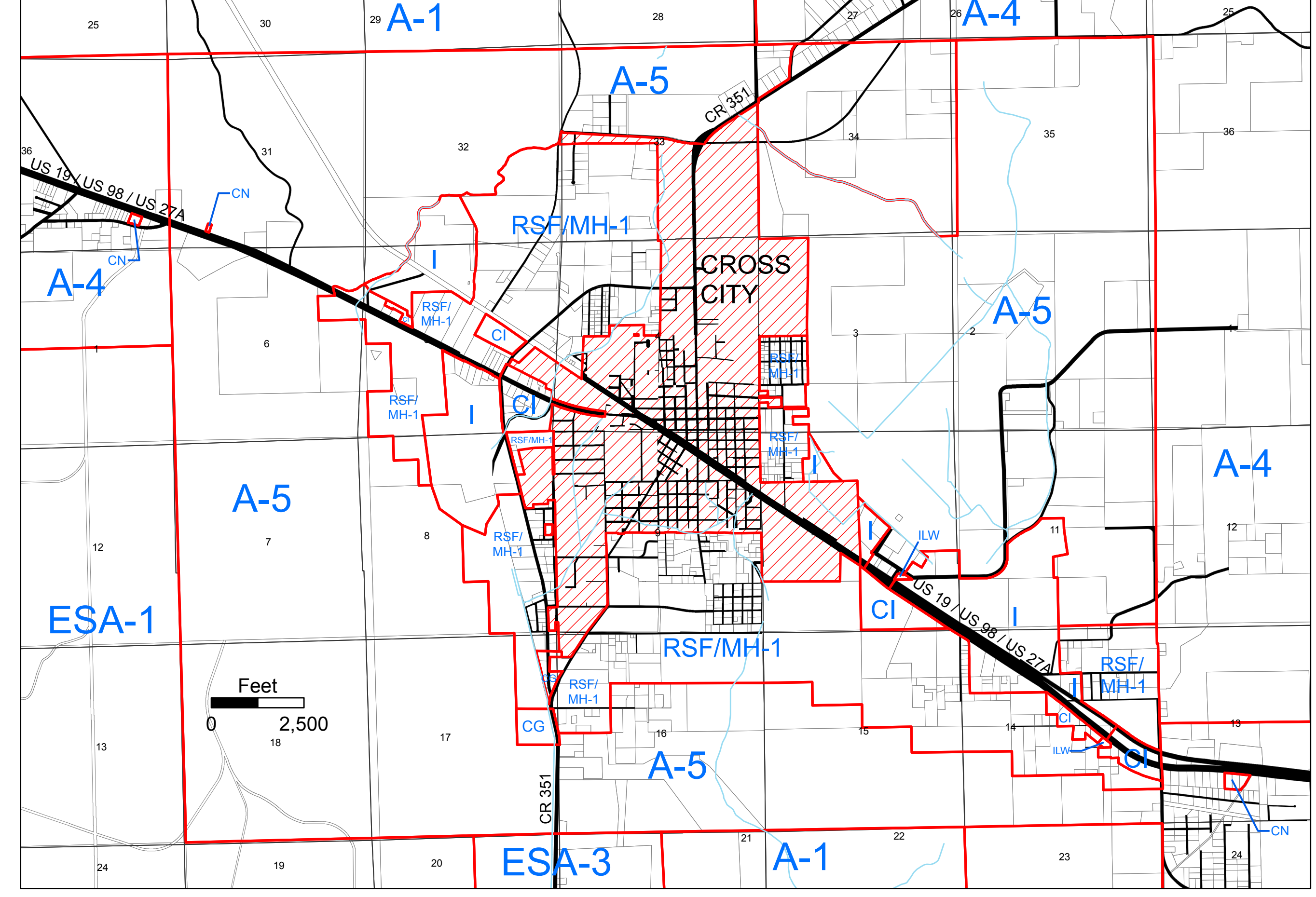
Gilchrist County

Levy County
Suwannee River

- Legend**
- Zoning Boundary
 - County Boundary Line
 - Incorporated Area
 - Lake
 - River or Stream
 - Coastal Management Area Boundary

- ZONING DISTRICTS**
- CSV CONSERVATION
 - ESA-1,2,3,4 ENVIRONMENTALLY SENSITIVE AREAS
 - A-1,2,3,4,5 AGRICULTURE
 - RR RURAL RESIDENTIAL
 - RSF-1,2,3 RESIDENTIAL, (CONVENTIONAL) SINGLE FAMILY
 - RSF/MH-1,2,3 RESIDENTIAL, (MIXED) SINGLE FAMILY/MOBILE HOME
 - RMH-1,2,3 RESIDENTIAL, MOBILE HOME
 - RMH-P RESIDENTIAL, MOBILE HOME PARK
 - RMF-1,2 RESIDENTIAL MULTIPLE FAMILY
 - O OFFICE
 - CN COMMERCIAL, NEIGHBORHOOD
 - CG COMMERCIAL, GENERAL
 - CI COMMERCIAL, INTENSIVE
 - ILW INDUSTRIAL, LIGHT AND WAREHOUSING
 - I INDUSTRIAL
 - PRD PLANNED RESIDENTIAL DEVELOPMENT

Source: County Property Appraiser, 2019.
W:\FLUM_ZNDixie\DIZN13.mxd



ADOPTED ON SEPTEMBER 27, 1990 BY ORDINANCE NO. 90-04
 AMENDED ON MARCH 3, 1994 BY ORDINANCE NO. 94-03
 AMENDED ON JUNE 2, 1994 BY ORDINANCE NO. 94-07
 AMENDED ON JULY 21, 1994 BY ORDINANCE NO. 94-09
 AMENDED ON DECEMBER 1, 1994 BY ORDINANCE NO. 94-14
 AMENDED ON JULY 20, 1995 BY ORDINANCE NO. 95-05
 AMENDED ON NOVEMBER 2, 1995 BY ORDINANCE NO. 95-12
 AMENDED ON SEPTEMBER 5, 1996 BY ORDINANCE NO. 96-13
 AMENDED ON MARCH 6, 1997 BY ORDINANCE NOS. 97-02 AND 97-03
 AMENDED ON JUNE 19, 1997 BY ORDINANCE NO. 97-04
 AMENDED ON JUNE 18, 1998 BY ORDINANCE NO. 98-08
 AMENDED ON JULY 16, 1998 BY ORDINANCE NO. 98-10
 AMENDED ON SEPTEMBER 3, 1998 BY ORDINANCE NOS. 98-12
 AMENDED ON OCTOBER 15, 1998 BY ORDINANCE NO. 98-13
 AMENDED ON APRIL 1, 1999 BY ORDINANCE NO. 99-01
 AMENDED ON MAY 20, 1999 BY ORDINANCE NO. 99-02
 AMENDED ON AUGUST 5, 1999 BY ORDINANCE NOS. 99-04 AND 99-05
 AMENDED ON SEPTEMBER 21, 2000 BY ORDINANCE NO. 00-04
 AMENDED ON NOVEMBER 2, 2000 BY ORDINANCE NO. 00-06
 AMENDED ON JANUARY 18, 2001 BY ORDINANCE NO. 01-01
 AMENDED ON FEBRUARY 1, 2001 BY ORDINANCE NO. 01-03

ADOPTED ON AUGUST 16, 2001 BY ORDINANCE NO. 01-05
 AMENDED ON MARCH 21, 2002 BY ORDINANCE NO. 02-03
 AMENDED ON SEPTEMBER 15, 2001 BY ORDINANCE NO. 2011-04
 AMENDED ON MAY 2, 2002 BY ORDINANCE NO. 02-05
 AMENDED ON FEBRUARY 20, 2003 BY ORDINANCE NO. 03-01
 AMENDED ON JULY 7, 2004 BY ORDINANCE NO. 04-02
 AMENDED ON DECEMBER 2, 2004 BY ORDINANCE NO. 04-07
 AMENDED ON DECEMBER 6, 2007 BY ORDINANCE NO. 07-06
 AMENDED ON FEBRUARY 15, 2011 BY ORDINANCE NO. 2011-04
 AMENDED ON APRIL 3, 2014 BY ORDINANCE NO. 2014-05
 AMENDED ON JUNE 5, 2014 BY ORDINANCE NO. 2014-06
 AMENDED ON JANUARY 15, 2015 BY ORDINANCE NO. 2015-01
 AMENDED ON MAY 5, 2016 BY ORDINANCE NO. 2016-06
 AMENDED ON JULY 7, 2004 BY ORDINANCE NO. 04-02
 AMENDED ON MAY 19, 2016 BY ORDINANCE NO. 2016-11
 AMENDED ON JANUARY 19, 2017 BY ORDINANCE NO. 2017-02
 AMENDED ON MARCH 16, 2017 BY ORDINANCE NO. 2017-04
 AMENDED ON JULY 20, 2017 BY ORDINANCE NO. 2017-11
 AMENDED ON AUGUST 3, 2017 BY ORDINANCE NOS. 2017-14 AND 2017-15
 AMENDED ON APRIL 19, 2018 BY ORDINANCE NO. 2018-06
 AMENDED ON FEBRUARY 15, 2018 BY ORDINANCE NO. 2018-01
 AMENDED ON APRIL 19, 2018 BY ORDINANCE NO. 2018-06
 AMENDED ON AUGUST 16, 2018 BY ORDINANCE NO. 2018-15
 AMENDED ON SEPTEMBER 25, 2018 BY ORDINANCE NO. 2018-18
 AMENDED ON NOVEMBER 15, 2018 BY ORDINANCE NO. 2018-22
 AMENDED ON JANUARY 17, 2019 BY ORDINANCE NO. 2019-02
 AMENDED ON JUNE 20, 2019 BY ORDINANCE NOS. 2019-07 AND 2019-09

Note: Please refer to amendment ordinances for legal description of properties 10 acres or less in size and the corresponding zoning district for these properties.



T8S
T9S
T10S
T11S
T12S
T13S